

10	25/03/24	POST TYPE CHANGE	H.B
09	20/06/23	SOCKET SIZE CHANGED	A.D
08	21/07/22	SOCKET SIZE CHANGED	A.D
07	19/01/22	HOLE REMOVED & STIFFENER ADDED TO S.M.P	A.D
06	23/09/21	DETAILS REVISED	M.T
05	12/02/19	DETAILS REVISED	M.T
04	12/02/19	REVISED TITLEBLOCK AND ADDED DETAIL	H.B
03	26.11.18	BASEPLATE DETAIL REVISED	H.B
02	17/10/18	DETAILS CORRECTED	M.T
01	20/04/17	BEAM TYPE REVISED	M.T
00	14/03/17	DRAWING CREATED	M.T
REVn	DATE	DETAILS	INITIAL

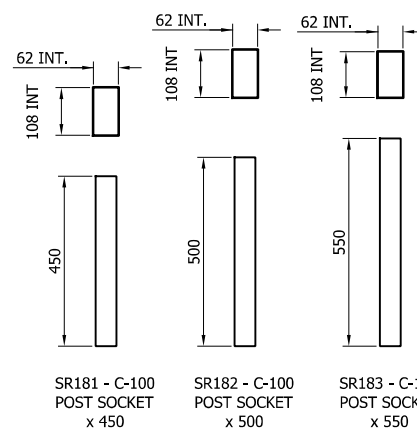
MegaRail ex H1W2 VI 4

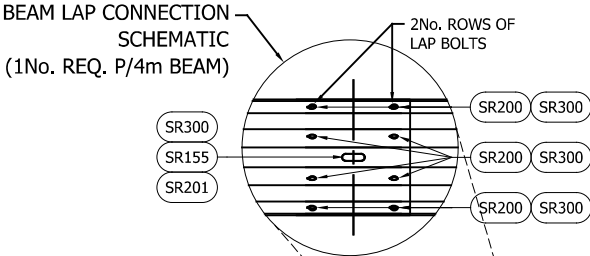
H1W2 VEHICLE RESTRAINT SYSTEM
COMPONENTS SCHEMATIC



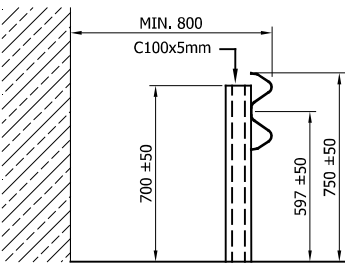
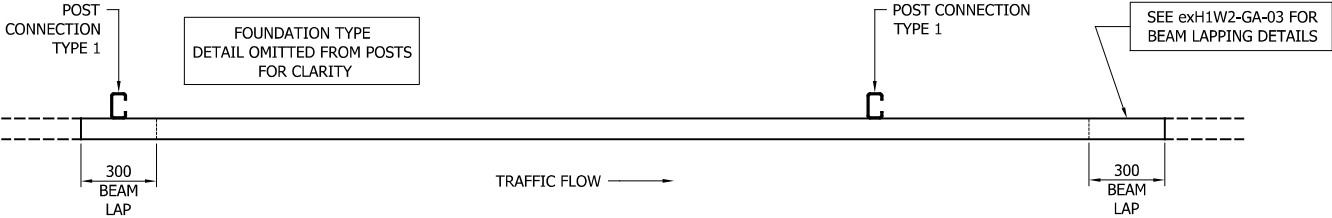
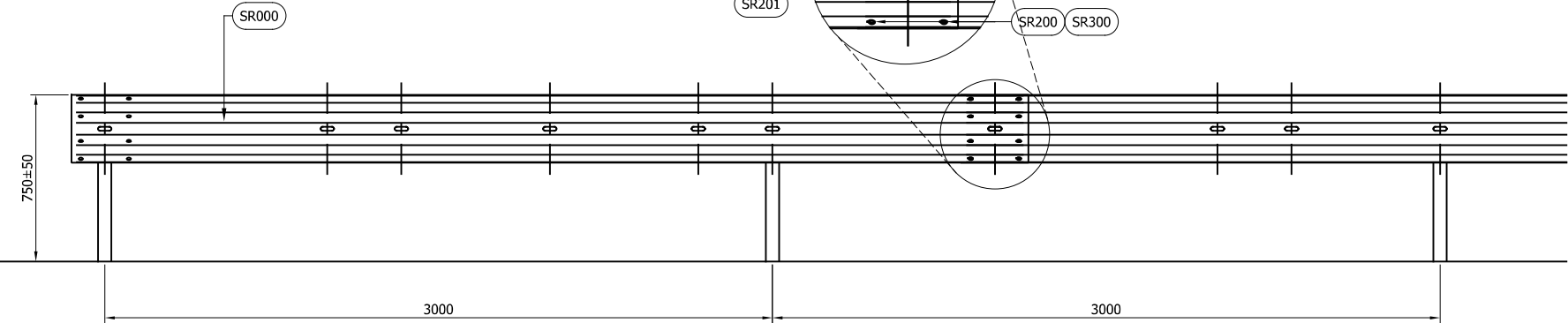
CONCORD HOUSE,
BESSEMER WAY, SCUNTHORPE,
NORTH LINCOLNSHIRE, DN15 8XE
t: 01724 289119
FOR TECHNICAL ASSISTANCE CONTACT
john.cudlipp@saferoad.co.uk

DRAWING NUMBER:	REVn:
exH1W2-GA-00	10





- GENERAL NOTES:
- 1. P.S.B. = POINT FROM WHERE SET-BACK IS MEASURED.
 - 2. POSTS ARE TO BE INSTALLED WITH THE CLOSED FACE OF THE CHANNEL TOWARDS THE ON-COMING TRAFFIC.
 - 3. FOR OPTIONS ON POST FOUNDATIONS REFER TO DRAWING NUMBER MR-GA-020
 - 4. FOR DEVIATIONS IN SYSTEM POST PITCH REFER TO DRAWING exH1W2-GA-40
 - 5. WHEN TYING INTO ADJACENT VRS ONLY ONE WORKING WIDTH DIFFERENCE IS PERMITTED.
 - 6. WHERE A KERB IS PRESENT THE MAXIMUM KERB HEIGHT IS 100mm. SHOULD THE KERB BE HIGHER THAN 100mm AND THE FENCE IS SETBACK LESS THAN 250mm FROM FACE OF KERB THE SYSTEM HEIGHT IS MEASURED FROM THE CARRIAGEWAY. IF THE SETBACK IS MORE THAN 250mm FROM THE FACE OF KERB THE SYSTEM HEIGHT IS MEASURED FROM THE TOP OF THE KERB. SEE MR-GA-002.
 - 7. FOR MINIMUM LENGTH OF FULL HEIGHT VRS REFER TO SAFEROAD MEGARAIL MANUAL.



06	25/03/24	POST TYPE CHANGE	H.B
05	18/03/22	TABLE 'A' REVISED	A,D
04	08/10/21	GENERAL NOTE 6 REVISED	A,D
03	01/04/19	SECTION VIEW REVISED	M,T
02	12/02/19	TITLEBLOCK REVISED	H,B
01	20/04/17	BEAM TYPE REVISED	M,T
00	14/03/17	DRAWING CREATED	M,T
REVn	DATE	DETAILS	INITIAL

MegaRail ex
H1W2 VI 4

SYSTEM ASSEMBLY AND SETTING
OUT ARRANGEMENT SCHEMATIC

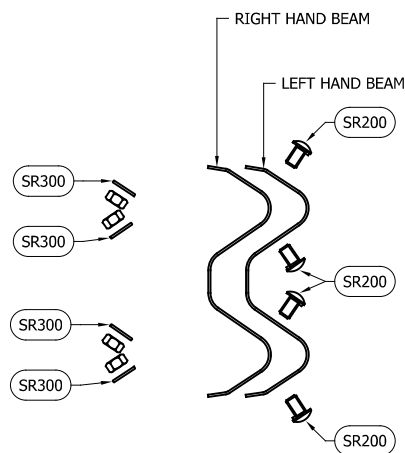


CONCORD HOUSE,
BESSEMER WAY, SCUNTHORPE,
NORTH LINCOLNSHIRE, DN15 8XE
t: 01724 289119
FOR TECHNICAL ASSISTANCE CONTACT
john.cudlipp@saferoad.co.uk

TOTAL COMPONENTS PER 4M BEAM		
SAFEROAD PART NUMBER	DESCRIPTION	QUANTITY
SR000	BEAM "A" PROFILE 4.3m x 2.5mm	1
SEE TABLE 'B'	POST C100 (5mm THICK)	2
FOR SCHEDULE OF BOLTED CONNECTIONS REFER TO DRAWING NUMBER exH1W2-GA-02		

TABLE 'B' - SCHEDULE OF POST REFERENCE NUMBERS AND LENGTHS	
SAFEROAD PART NUMBER	POST LENGTH
SR537	1100
SR538	1800
SR539	2000
SR540	2400

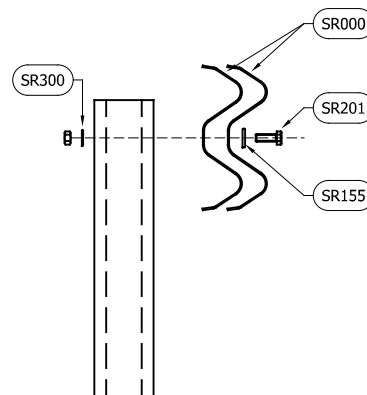
DRAWING NUMBER:	REVn:
exH1W2-GA-01	06



BEAM LAP FIXING SCHEMATIC
(x2 LOCATIONS / BEAM END)

** BEAM REFERENCES i.e. LEFT / RIGHT HAND ARE FOR VERGE INSTALLATIONS; FOR CENTRAL RESERVATION INSTALLATIONS THE REFERENCES ARE REVERSED

TOTAL QUANTITIES PER BEAM		
SAFEROAD PART NUMBER	DESCRIPTION	BEAM LAP CONNECTION
SR200	SETSCREW 4,6 LIP M16x27 c/w NUT	8 (+8)
SR300	WASHER M16 18Ø HOLE	8 (+8)



BEAM TO POST FIXING
SCHEMATIC
(CONNECTION TYPE 1)

TOTAL QUANTITIES PER POST		
SAFEROAD PART NUMBER	DESCRIPTION	BEAM TO POST CONNECTION
SR201	SETSCREW 8,8 M16 x 45 c/w NUT	1
SR155	WASHER PLATE 85 x 35 x 4 DIA. 18	1
SR300	WASHER M16 18Ø HOLE	1

GENERAL NOTES:

- NUMBERS IN THE SCHEDULES SUFFIXED (+) DENOTES THE ADDITIONAL QUANTITY OF COMPONENTS REQUIRED FOR EXTREME ENDS OF INDIVIDUAL RUNS OF BARRIER.

03	25/03/24	POST TYPE CHANGE	H.B
02	12/02/19	TITLEBLOCK REVISED	H.B
01	20/04/17	BEAM TYPE REVISED	M.T
00	14/03/17	DRAWING CREATED	M.T
REVn	DATE	DETAILS	INITIAL

MegaRail ex H1W2 VI 4

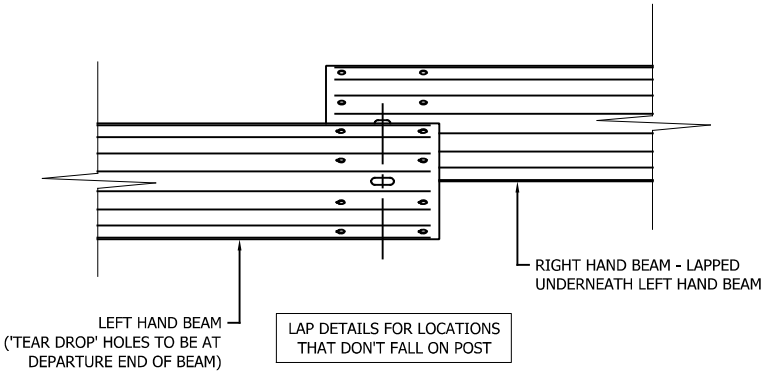
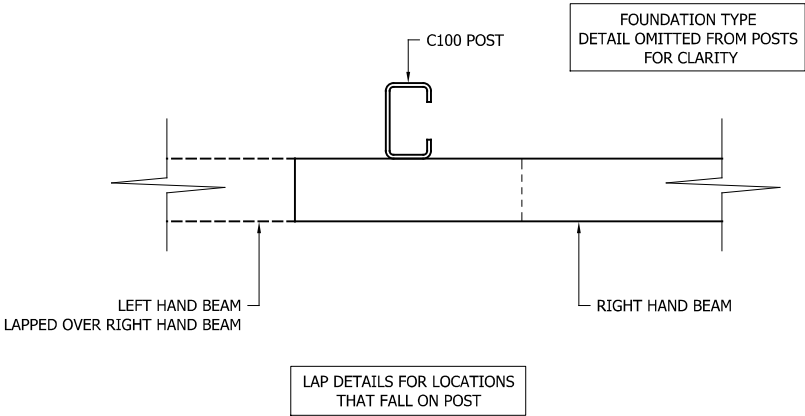
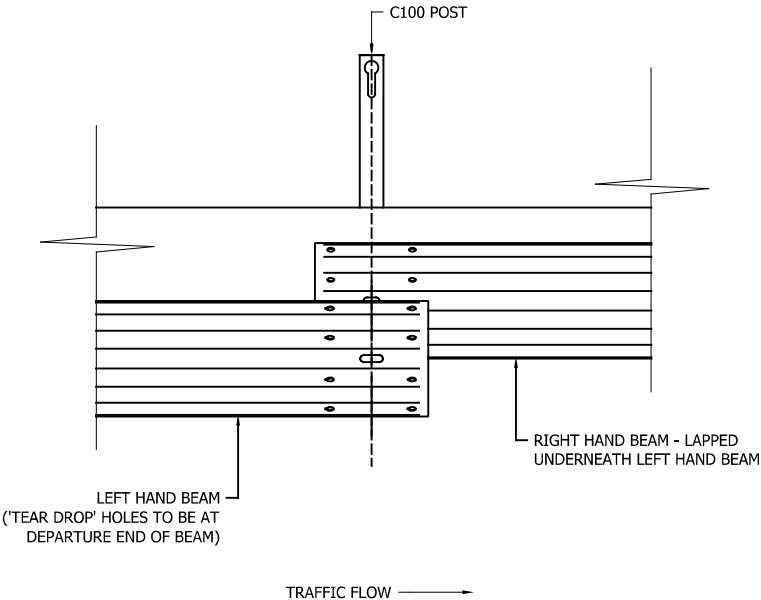
FIXING & INSTALLATION SCHEMATIC



CONCORD HOUSE,
BESSEMER WAY, SCUNTHORPE,
NORTH LINCOLNSHIRE, DN15 8XE
t: 01724 289119
FOR TECHNICAL ASSISTANCE CONTACT
john.cudlipp@saferoad.co.uk

DRAWING NUMBER:	REVn:
exH1W2-GA-02	03

- GENERAL NOTES:
1. POSTS ARE TO BE INSTALLED WITH THE CLOSED FACE OF THE CHANNEL TOWARDS THE ON-COMING TRAFFIC.



02	25/03/24	DRAWING UPDATED	H.B
01	12/02/19	TITLEBLOCK REVISED	H.B
00	14/03/17	DRAWING CREATED	M.T
REVn	DATE	DETAILS	INITIAL

MegaRail ex H1W2 VI 4

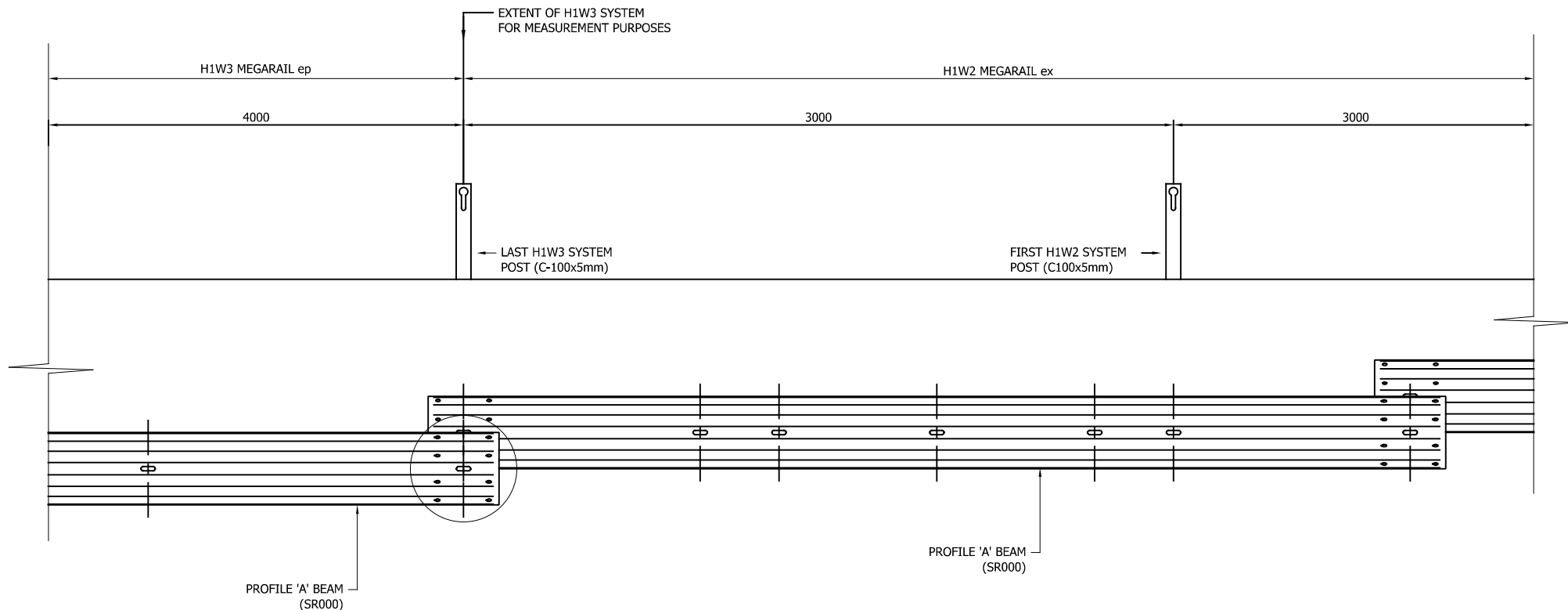
BEAM LAPPING DETAILS



CONCORD HOUSE,
BESSEMER WAY, SCUNTHORPE,
NORTH LINCOLNSHIRE, DN15 8XE
t: 01724 289119
FOR TECHNICAL ASSISTANCE CONTACT
john.cudlipp@saferoad.co.uk

DRAWING NUMBER:	REVn:
exH1W2-GA-03	02

** BEAM REFERENCES i.e. LEFT / RIGHT HAND ARE FOR VERGE INSTALLATIONS; FOR CENTRAL RESERVATION INSTALLATIONS THE REFERENCES ARE REVERSED



MegaRail ex H1W2 VI 4

SYSTEM PROGRESSION DETAILS



CONCORD HOUSE,
BESSEMER WAY, SCUNTHORPE,
NORTH LINCOLNSHIRE, DN15 8XE
t: 01724 289119

FOR TECHNICAL ASSISTANCE CONTACT
john.cudlipp@saferoad.co.uk

GENERAL NOTES:

1. POSTS ARE TO BE INSTALLED WITH THE CLOSED FACE OF THE CHANNEL TOWARDS THE ON-COMING TRAFFIC.

** BEAM REFERENCES i.e. LEFT / RIGHT HAND ARE FOR VERGE INSTALLATIONS; FOR CENTRAL RESERVATION INSTALLATIONS THE REFERENCES ARE REVERSED

NOTE: BEAM ORIENTATION CIRCULAR HOLES TO BEAM APPROACH END

02	25/03/24	DRAWING UPDATED	H.B
01	12/02/19	TITLEBLOCK REVISED	H.B
00	14/03/17	DRAWING CREATED	M.T
REVn	DATE	DETAILS	INITIAL

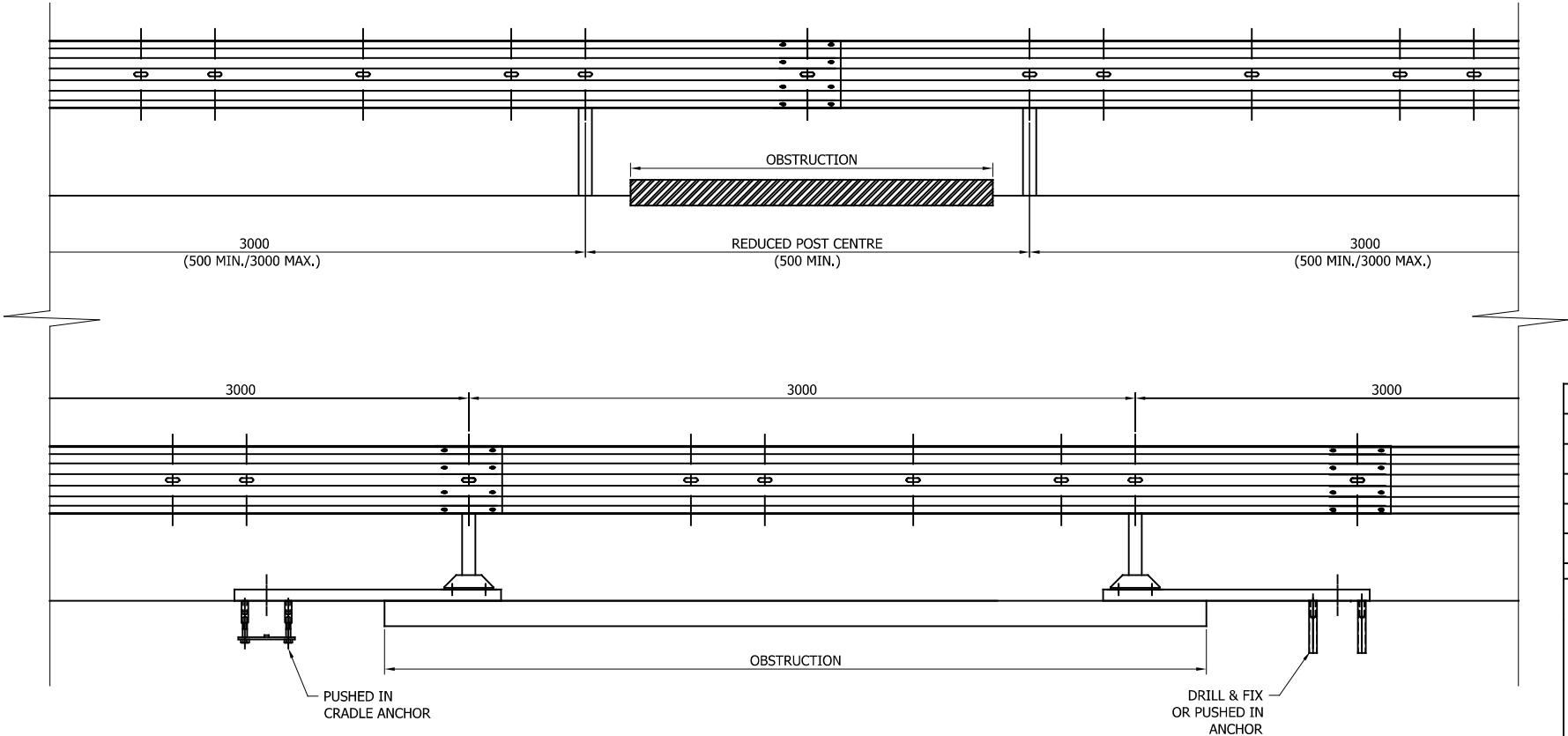
DRAWING NUMBER:

exH1W2-GA-20

REVn:

02

- GENERAL NOTES:
- 1. IN PRINCIPLE, THE DISTANCE BETWEEN THE POSTS ARE NOT EXCEEDED. IF THE SITE CONDITIONS DO NOT ALLOW A REGULAR DISTANCE, THE POST SPACING MUST BE REDUCED WITH AN ADDITIONAL POST.
 - 2. OFFSET POSTS SHOWN ON DRAWING exH1W2-GA-00 CAN BE USED.



05	25/03/24	DRAWING UPDATED	H.B
04	23/07/21	SURFACE MOUNTED POST DETAIL ADDED	A,D
03	12/02/19	TITLEBLOCK REVISED	H.B
02	17/10/18	DETAILS CORRECTED	M.T
01	28/03/17	DETAILS REVISED	M.T
00	14/03/17	DRAWING CREATED	M.T
REVn	DATE	DETAILS	INITIAL

MegaRail ex H1W2 VI 4

DETAILS OF PERMISSABLE
DEVIATIONS FOR POST POSITIONS



CONCORD HOUSE,
BESSEMER WAY, SCUNTHORPE,
NORTH LINCOLNSHIRE, DN15 8XE
t: 01724 289119
FOR TECHNICAL ASSISTANCE CONTACT
john.cudlipp@saferoad.co.uk

DRAWING NUMBER:	REVn:
exH1W2-GA-40	05