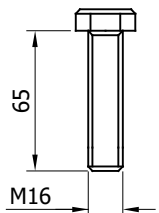
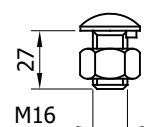


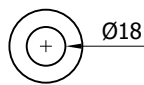
SR151 - WASHER PLATE
115 x 40 x 6 DIA. 18



GF216 - SETSCREW 8.8
M16x65



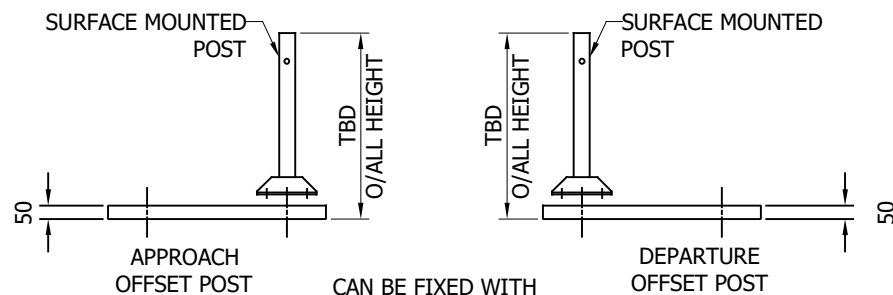
SR200 - SETSCREW 4.6
LIP M16x27 c/w NUT



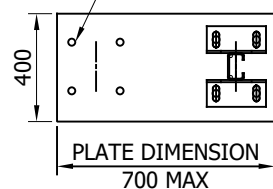
SR300 - WASHER
18Ø



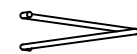
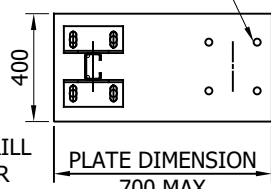
GF170 - M16 NUT



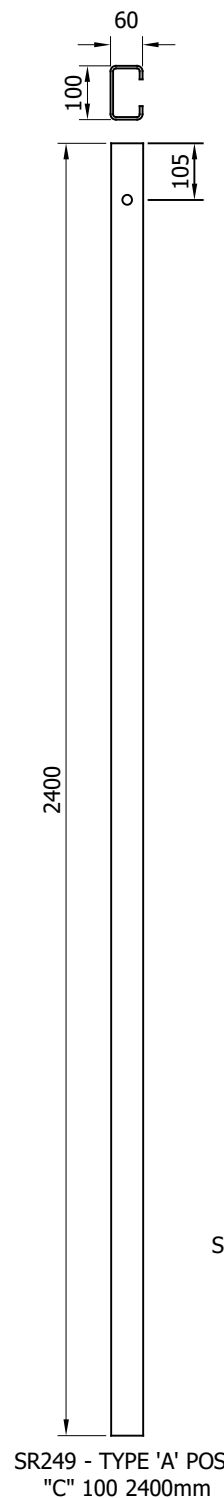
CAN BE FIXED WITH
CAST IN ANCHORS, DRILL
AND FIX ANCHORS OR
PUSHED IN ANCHORS
AT 180x180 CENTERS



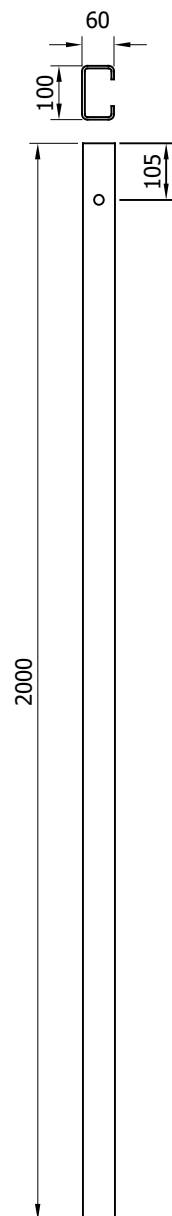
*BASEPLATE DRILL
& TAPPED FOR
LIFTING EYE



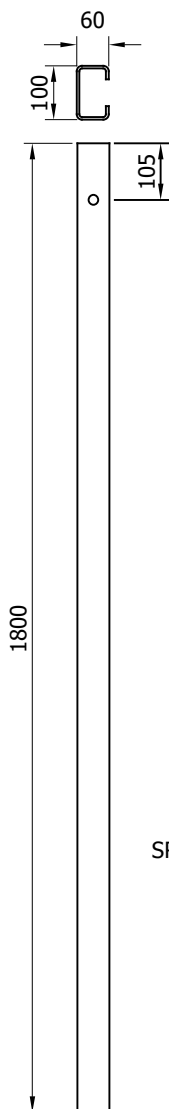
SR100 - A21
REINFORCING
RING



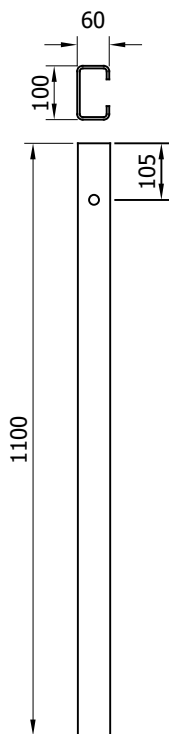
SR249 - TYPE 'A' POST
"C" 100 2400mm



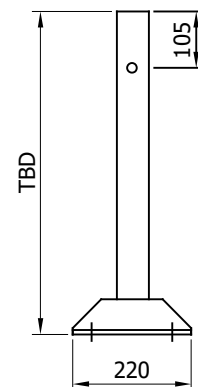
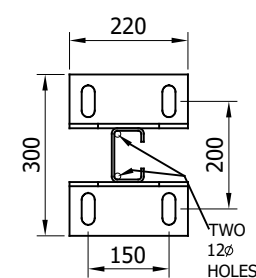
SR248 - TYPE 'A' POST
"C" 100 2000mm



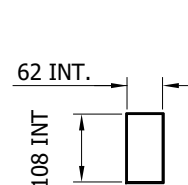
SR247 - TYPE 'A' POST
"C" 100 1800mm



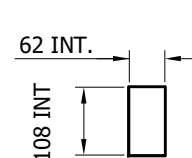
SR246 - TYPE 'A' POST
"C" 100 1100mm



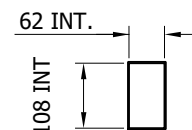
SURFACE MOUNTED -
TYPE 'A' C-100 POST



SR181 - C-100
POST SOCKET
x 450



SR182 - C-100
POST SOCKET
x 500



SR183 - C-100
POST SOCKET
x 550

07	20/06/23	SOCKET SIZES CHANGED	A.D
06	21/07/22	SOCKET SIZES CHANGED	A.D
05	08/07/22	DETAILS REVISED	A.D
04	13/05/22	SURFACE MOUNTED POST BASE CHANGED	A.D
03	16/08/21	REINFORCING RING ADDED	A.D
02	23/07/21	SURFACE MOUNTED POST HOLE REVISED	A.D
01	27/05/21	DETAILS REVISED	M.T
00	16/03/20	DRAWING CREATED	H.B
REVn	DATE	DETAILS	INITIAL

MegaRail ea N2W1

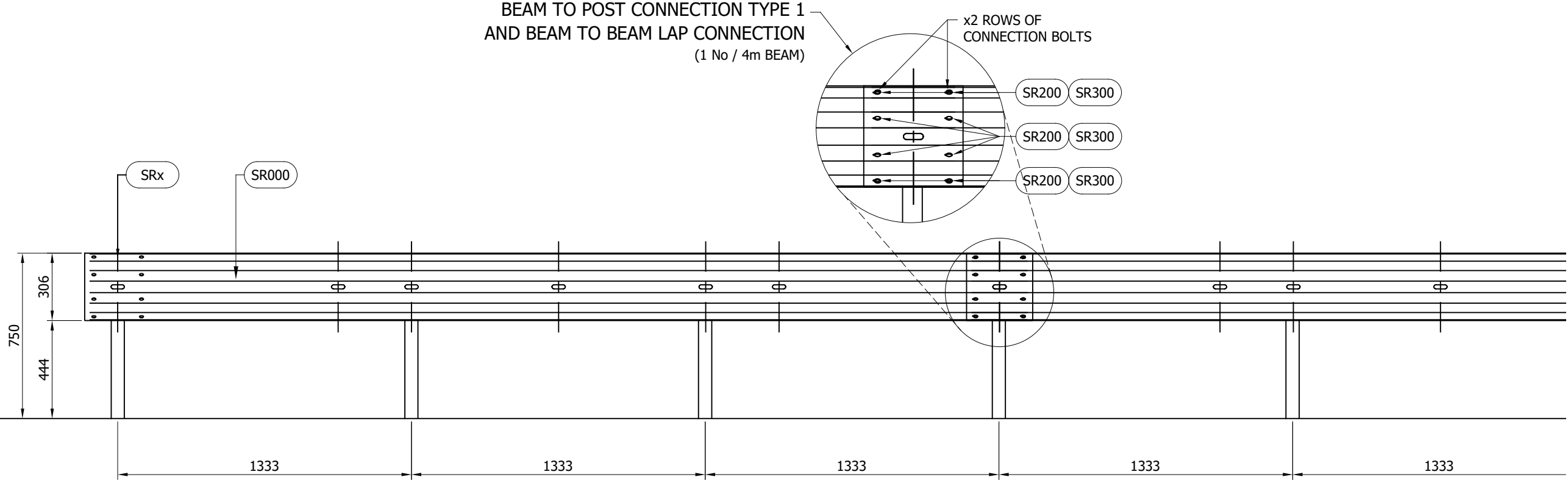
N2W1 VEHICLE RESTRAINT SYSTEM
COMPONENTS SCHEMATIC

SAFEROAD®

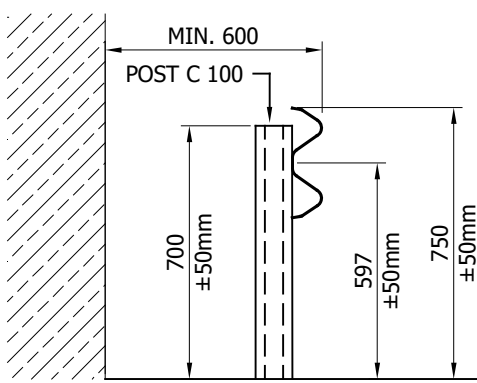
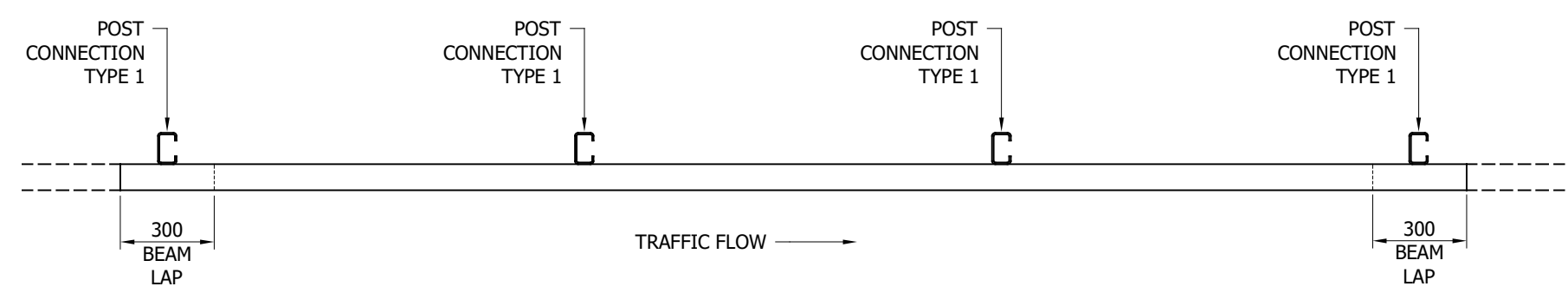
CONCORD HOUSE,
BESSEMER WAY, SCUNTHORPE,
NORTH LINCOLNSHIRE, DN15 8XE
t: 01724 289119
FOR TECHNICAL ASSISTANCE CONTACT
john.cudlipp@saferoad.co.uk

DRAWING NUMBER:	REVn:
eaN2W1-GA-00	07

BEAM TO POST CONNECTION TYPE 1
AND BEAM TO BEAM LAP CONNECTION
(1 No / 4m BEAM)



- GENERAL NOTES:
1. P.S.B. = POINT FROM WHERE SET-BACK IS MEASURED.
 2. POSTS ARE TO BE INSTALLED WITH THE CLOSED FACE OF THE CHANNEL TOWARDS THE ON-COMING TRAFFIC.
 3. FOR OPTIONS ON POST FOUNDATIONS REFER TO DRAWING NUMBER MR-GA-020
 4. FOR DEVIATIONS IN SYSTEM POST PITCH REFER TO DRAWING N2W1-GA-40
 5. WHEN TYING INTO ADJACENT VRS ONLY ONE WORKING WIDTH DIFFERENCE IS PERMITTED.
 6. WHERE A KERB IS PRESENT THE MAXIMUM KERB HEIGHT IS 100mm. SHOULD THE KERB BE HIGHER THAN 100mm AND THE FENCE IS SETBACK LESS THAN 250mm FROM FACE OF KERB THE SYSTEM HEIGHT IS MEASURED FROM THE CARRIAGEWAY. IF THE SETBACK IS MORE THAN 250mm FROM THE FACE OF KERB THE SYSTEM HEIGHT IS MEASURED FROM THE TOP OF THE KERB. SEE MR-GA-002.
 7. FOR MINIMUM LENGTH OF FULL HEIGHT VRS REFER TO SAFEROAD MEGARAIL MANUAL.



REVn	DATE	DETAILS	INITIAL
03	18/03/22	TABLE 'A' REVISED	A.D
02	12/01/22	TOLERANCES ADDED	A.D
01	26/05/21	NOTES REVISED	M.T
00	16/03/20	DRAWING CREATED	H.B

MegaRail ea
N2W1

N2W1 VEHICLE RESTRAINT SYSTEM
ASSEMBLY AND SETTING OUT
ARRANGEMENT

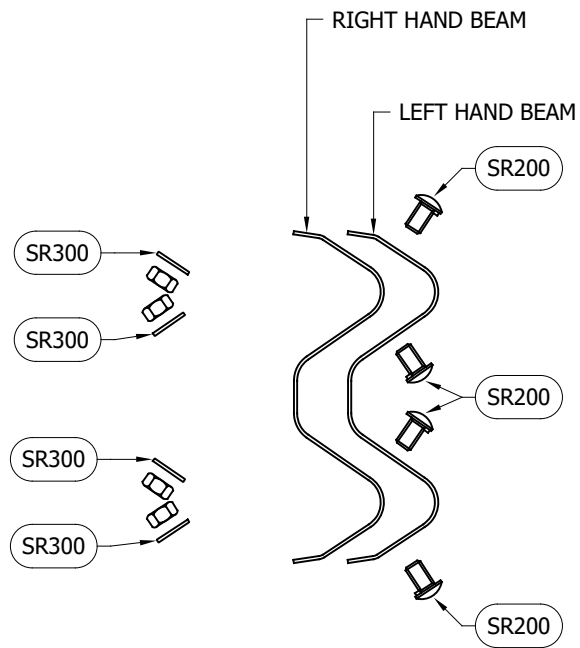
TABLE 'A' - SYSTEM COMPONENT SCHEDULE - QUANTITIES / 4m BEAM		
SAFEROAD UK PART NUMBER	DESCRIPTION	QUANTITY
SR000	BEAM "A" PROFILE 4.3mtr x 2.5mm	1
SEE TABLE 'B'	POST "C" 100	2
FOR SCHEDULE OF BOLTED CONNECTIONS REFER TO DRAWING NUMBER epN2W2-GA-02		

TABLE 'B' - SCHEDULE OF POST REFERENCE NUMBERS AND LENGTHS	
SAFEROAD UK PART NUMBER	POST LENGTH
SR246	1100
SR247	1800
SR248	2000
SR249	2400

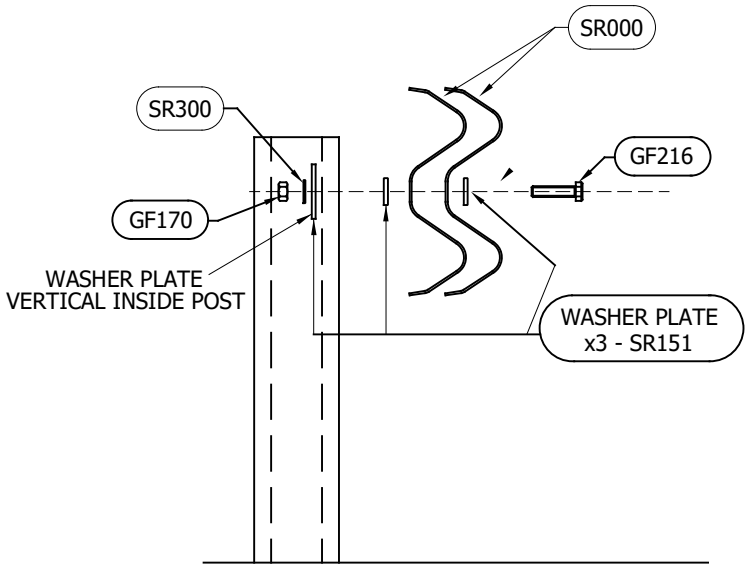
SAFEROAD®

CONCORD HOUSE,
BESSEMER WAY, SCUNTHORPE,
NORTH LINCOLNSHIRE, DN15 8XE
t: 01724 289119
FOR TECHNICAL ASSISTANCE CONTACT
john.cudlipp@saferoad.co.uk

DRAWING NUMBER:	REVn:
eaN2W1-GA-01	03



BEAM TO BEAM CONNECTION
ARRANGEMENT
(x2 LOCATIONS / BEAM END)



BEAM TO POST
CONNECTION TYPE 1

** BEAM REFERENCES i.e. LEFT / RIGHT HAND ARE FOR VERGE INSTALLATIONS; FOR CENTRAL RESERVATION INSTALLATIONS THE REFERENCES ARE REVERSED

BOLTING COMPONENT SCHEDULE - QUANTITIES / BEAM		
SAFEROAD UK PART NUMBER	DESCRIPTION	BEAM TO BEAM CONNECTION
SR200	SETSCREW 4.6 LIP M16x27 c/w NUT	8 (+8)
SR300	WASHER M16 18ø HOLE	8 (+8)

BOLTING COMPONENT SCHEDULE - QUANTITIES / POST		
SAFEROAD UK PART NUMBER	DESCRIPTION	TYPE 1 CONNECTION
GF216	SETSCREW 8.8 M16 x 65	1
GF170	M16 NUT	1
SR151	WASHER PLATE 115 x 40 x 6 DIA. 18	3
SR300	WASHER M16 18ø HOLE	1

- GENERAL NOTES:
- NUMBERS IN THE SCHEDULES SUFFIXED (+) DENOTES THE ADDITIONAL QUANTITY OF COMPONENTS REQUIRED FOR EXTREME ENDS OF INDIVIDUAL RUNS OF BARRIER.

03	08/07/22	DETAILS REVISED	A.D
02	11/06/21	DETAILS REVISED	M.T
01	26/05/21	DETAILS REVISED	M.T
00	16/03/20	DRAWING CREATED	H.B
REVn	DATE	DETAILS	INITIAL

MegaRail ea
N2W1

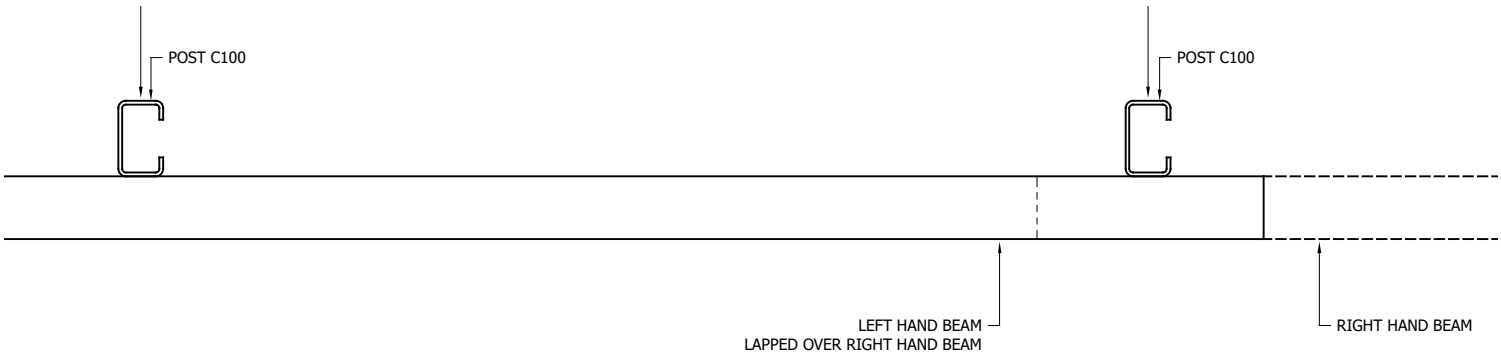
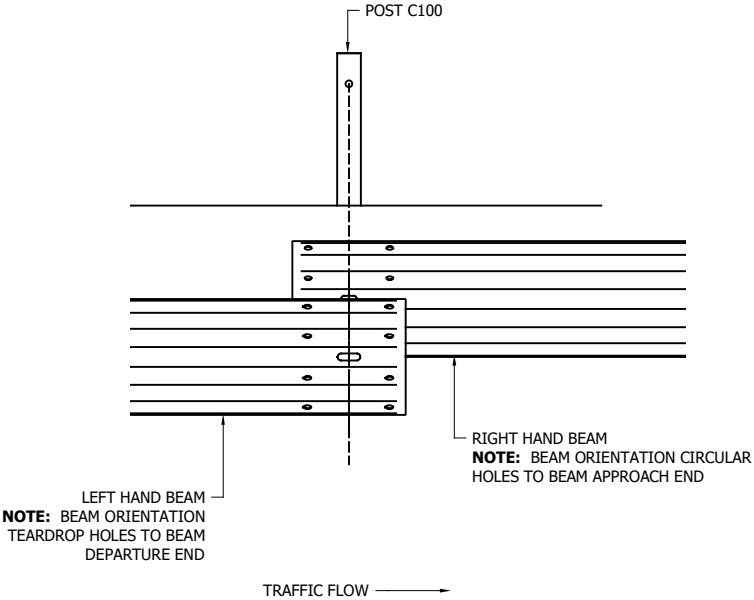
N2W1 VEHICLE RESTRAINT SYSTEM
BOLTING ARRANGEMENTS

SAFEROAD®

CONCORD HOUSE,
BESSEMER WAY, SCUNTHORPE,
NORTH LINCOLNSHIRE, DN15 8XE
t: 01724 289119
FOR TECHNICAL ASSISTANCE CONTACT
john.cudlipp@saferoad.co.uk

DRAWING NUMBER:	REVn:
eaN2W1-GA-02	03

- GENERAL NOTES:
1. POSTS ARE TO BE INSTALLED WITH THE CLOSED FACE OF THE CHANNEL TOWARDS THE ON-COMING TRAFFIC.



** BEAM REFERENCES i.e. LEFT / RIGHT HAND ARE FOR VERGE INSTALLATIONS; FOR CENTRAL RESERVATION INSTALLATIONS THE REFERENCES ARE REVERSED

00	16/03/20	DRAWING CREATED	H.B
REVn	DATE	DETAILS	INITIAL

MegaRail ea N2W1

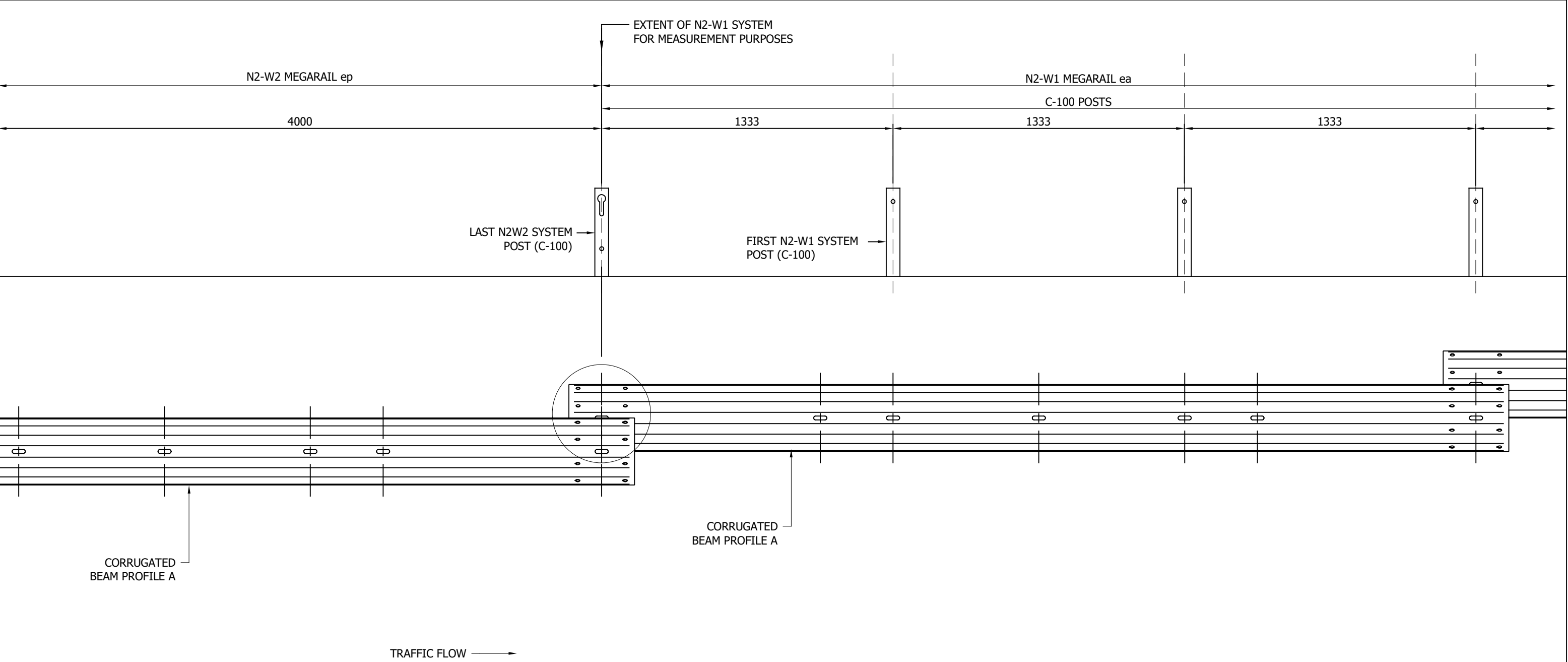
N2W1 VEHICLE RESTRAINT SYSTEM.
BEAM LAPPING DETAIL FOR
MEGARAIL SYSTEM

SAFEROAD®

CONCORD HOUSE,
BESSEMER WAY, SCUNTHORPE,
NORTH LINCOLNSHIRE, DN15 8XE
t: 01724 289119

FOR TECHNICAL ASSISTANCE CONTACT
john.cudlipp@saferoad.co.uk

DRAWING NUMBER:	REVn:
eaN2W1-GA-03	00



MegaRail ea N2W1

N2W1 VEHICLE RESTRAINT SYSTEM.
PROGRESSION CONNECTION DETAIL

SAFEROAD®

CONCORD HOUSE,
BESSEMER WAY, SCUNTHORPE,
NORTH LINCOLNSHIRE, DN15 8XE
t: 01724 289119
FOR TECHNICAL ASSISTANCE CONTACT
john.cudlipp@saferoad.co.uk

- GENERAL NOTES:
- 1. POSTS ARE TO BE INSTALLED WITH THE CLOSED FACE OF THE CHANNEL TOWARDS THE ON-COMING TRAFFIC.

NOTE: BEAM ORIENTATION CIRCULAR HOLES TO BEAM APPROACH END

** BEAM REFERENCES i.e. LEFT / RIGHT HAND ARE FOR VERGE INSTALLATIONS; FOR CENTRAL RESERVATION INSTALLATIONS THE REFERENCES ARE REVERSED

01	15/02/23	SLOT ADDED IN L/H BEAM	A.D
00	16/03/20	DRAWING CREATED	H.B
REVn	DATE	DETAILS	INITIAL

DRAWING NUMBER:	REVn:
eaN2W1-GA-20	01



PLEASE REFER TO MEGARAIL EA N2-W1 MANUAL
FOR DETAILS ON DRILLING ADDITIONAL HOLES

- GENERAL NOTES:
1. IF THE SITE CONDITIONS DO NOT ALLOW A POST TO BE INSTALLED ON THE SYSTEM PITCH DEVIATIONS CAN BE APPLIED. THE OBSTRUCTED POST CAN BE LEFT OUT AND EXTRA POSTS INSTALLED TO SPAN THE OBSTRUCTION. THE NEW POST SPACING MUST NOT EXCEED 3000mm AND MUST NOT BE LESS THAN 500mm. ALTHOUGH IT WOULD BE BENEFICIAL TO USE THE HOLES ALREADY IN THE BEAM IT IS ACCEPTABLE TO DRILL NEW HOLES IN THE DESIRED POSITIONS AND TREAT WITH ZINC RICH PAINT.
 2. OFFSET POSTS SHOWN ON DRAWING eaN2W1-GA-00 CAN BE USED. INSERT THE ORIGINAL POST SPACING INSTEAD OF 3000mm
 3. PLEASE REFER TO MEGARAIL EA N2W1 MANUAL FOR INFORMATION ON DRILLING ADDITIONAL HOLES

01	26/05/21	NOTES REVISED	M.T
00	16/03/20	DRAWING CREATED	H.B
REVn	DATE	DETAILS	INITIAL

**MegaRail ea
N2W1**

N2W1 VEHICLE RESTRAINT SYSTEM
DEVIATION SETTING OUT
ARRANGEMENT

SAFEROAD®

CONCORD HOUSE,
BESSEMER WAY, SCUNTHORPE,
NORTH LINCOLNSHIRE, DN15 8XE
t: 01724 289119
FOR TECHNICAL ASSISTANCE CONTACT
john.cudlipp@saferoad.co.uk

DRAWING NUMBER:	REVn:
eaN2W1-GA-40	01