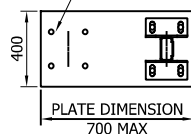
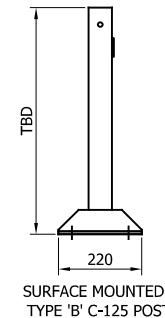
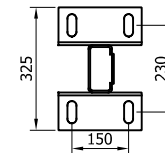
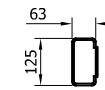
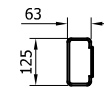
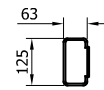
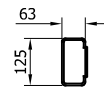
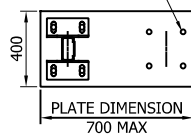


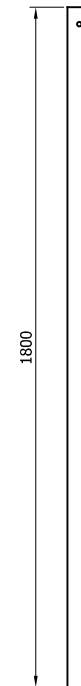
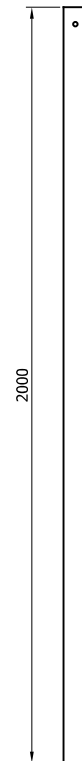
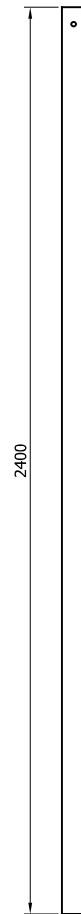
CAN BE FIXED WITH  
CAST IN ANCHORS, DRILL  
AND FIX ANCHORS OR  
PUSHED IN ANCHORS  
AT 180x180 CENTERS



BASEPLATE DRILL &  
TAPPED FOR LIFTING EYE



SR049 - TYPE 'B' POST "C"  
125  
1100mm x 5



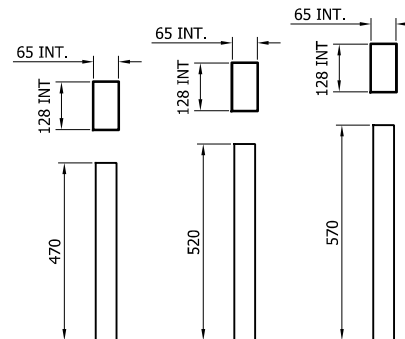
SR047 - TYPE 'B' POST  
"C" 125 1800mm x 5

SR048 - TYPE 'B' POST  
"C" 125 2000mm x 5

SR037 - TYPE 'B' POST  
"C" 125 2400mm x 5



NP001 - A21  
REINFORCING  
RING



SR080 - C-125  
POST SOCKET  
x 470

SR081 - C-125  
POST SOCKET  
x 520

SR083 - C-125  
POST SOCKET  
x 570

REVn	DATE	DETAILS	INITIAL
08	12/01/23	M10 x 45 BOLT AMENDMENTS	H.B
07	13/05/22	SURFACE MOUNTED POST BASE CHANGED	A.D
06	27/05/21	DETAILS REVISED	M.T
05	19/11/19	BEAM DETAILS ADDED	M.T
04	12/02/19	TITLEBLOCK REVISED	M.T
03	10/03/17	OFFSET POST REVISED	L.L
02	01/02/17	DETAILS REVISED	L.L
1.3	20/05/15	DETAILS REVISED	M.T

## MegaRail ec3.3 H1 W3 (VI4)

H1.W3 VEHICLE RESTRAINT SYSTEM  
COMPONENTS SCHEMATIC

**SAFEROAD®**

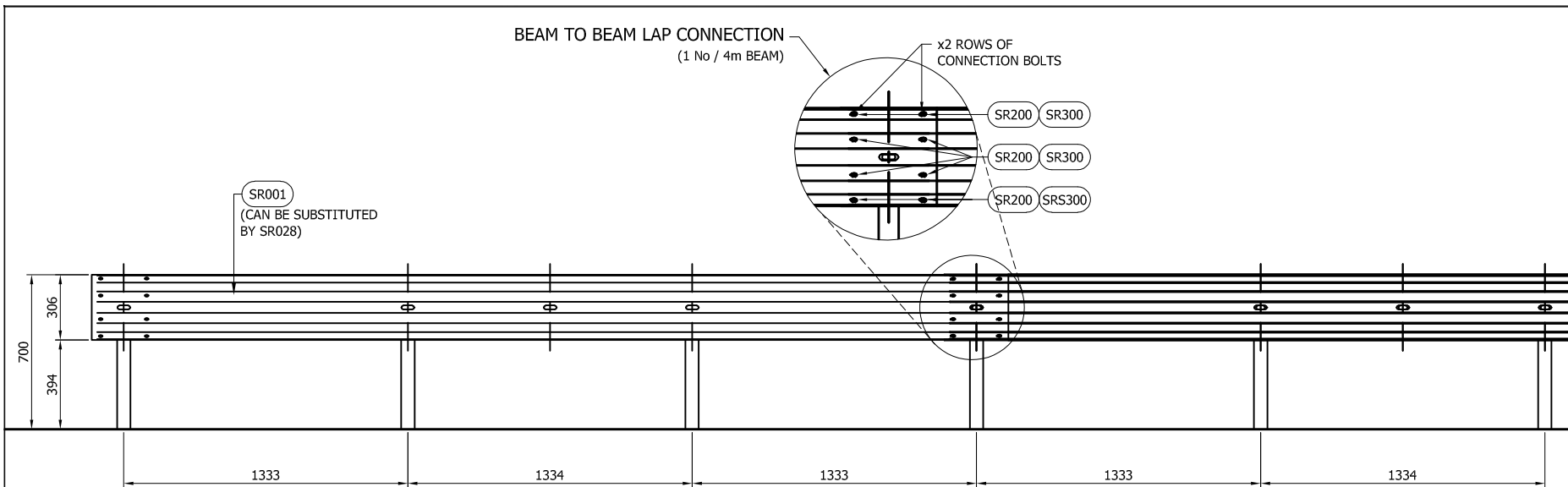
CONCORD HOUSE,  
BESSEMER WAY, SCUNTHORPE,  
NORTH LINCOLNSHIRE, DN15 8XE  
t: 01724 289119  
e: john.cudlipp@saferoad.co.uk

DRAWING NUMBER:

H1W3-GA-00

REVn:

08



#### GENERAL NOTES:

1. POSTS ARE TO BE INSTALLED WITH THE CLOSED FACE OF THE CHANNEL TOWARDS THE ON-COMING TRAFFIC.
2. FOR OPTIONS ON POST FOUNDATIONS REFER TO DRAWING NUMBER MR-GA-020
3. WHEN TYING INTO ADJACENT VRS ONLY ONE WORKING WIDTH DIFFERENCE IS PERMITTED.
5. WHERE A KERB IS PRESENT THE MAXIMUM KERB HEIGHT IS 100mm. SHOULD THE KERB BE HIGHER THAN 100mm AND THE FENCE IS SETBACK LESS THAN 250mm FROM THE FACE OF THE KERB, THE SYSTEM HEIGHT IS MEASURE FROM THE CARRIAGEWAY. IF THE SETBACK IS MORE THAN 250mm FROM THE FACE OF KERB THE SYSTEM HEIGHT IS MEASURED FROM THE TOP OF THE KERB.
6. FOR MINIMUM LENGTH OF FULL HEIGHT VRS REFER TO SAFEROAD MEGARAIL MANUAL.
7. FOR DEVIATIONS IN SYSTEM POST PITCH REFER TO DRAWING H1W4-GA-40.

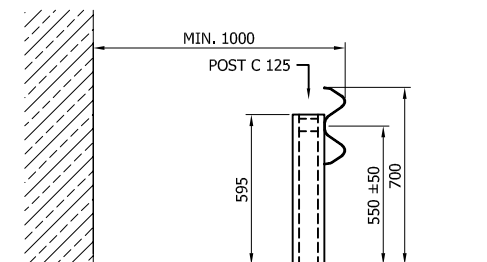
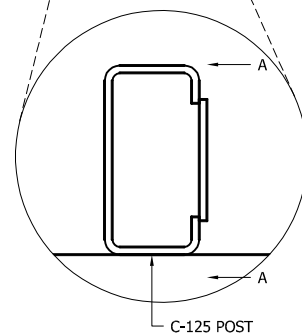
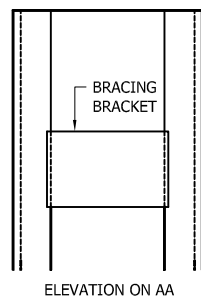
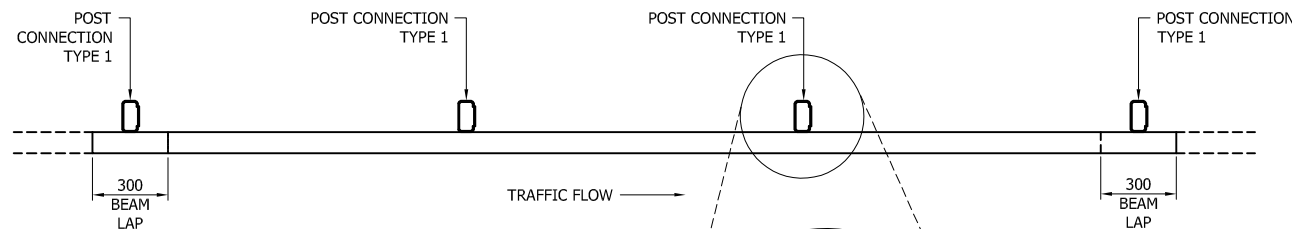


TABLE 'A' - SYSTEM COMPONENT SCHEDULE - QUANTITIES / 4m BEAM		
SAFEROAD UK PART NUMBER	DESCRIPTION	QUANTITY
SR001	BEAM "A" PROFILE (CAN BE SUBSTITUTED BY SR028)	1
SEE TABLE 'B'	POST "C" 125 c/w BRACKET	3
FOR SCHEDULE OF BOLTED CONNECTIONS REFER TO DRAWING NUMBER H1W3-GA-02		

TABLE 'B' - SCHEDULE OF POST REFERENCE NUMBERS AND LENGTHS	
SAFEROAD UK PART NUMBER	POST LENGTH
SR049	1100
SR047	1800
SR048	2000
SR037	2400

REV	DATE	DETAILS	INITIAL
04	19/11/19	BEAM DETAILS ADDED	M.T
03	12/02/19	TITLEBLOCK REVISED	M.T
02	01/02/17	DETAILS REVISED	L.L
1.3	20/05/15	DETAILS REVISED	M.T

## MegaRail ec3.3 H1 W3 (VI4)

H1.W3 VEHICLE RESTRAINT SYSTEM  
ASSEMBLY & SETTING OUT  
ARRANGEMENT

**SAFEROAD®**

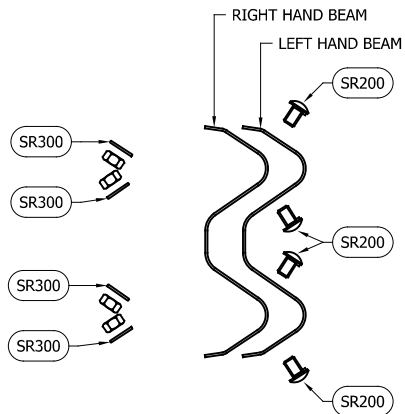
CONCORD HOUSE,  
BESSEMER WAY, SCUNTHORPE,  
NORTH LINCOLNSHIRE, DN15 8XE  
t: 01724 289119  
e: john.cudlipp@saferoad.co.uk

DRAWING NUMBER:

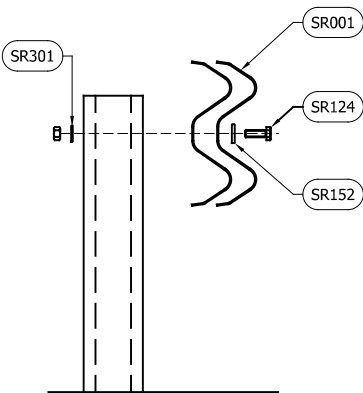
H1W3-GA-01

REV:

04



BEAM TO BEAM CONNECTION  
ARRANGEMENT  
(x2 LOCATIONS / BEAM END)



BEAM TO POST  
CONNECTION TYPE 1

BOLTING COMPONENT SCHEDULE - QUANTITIES / BEAM		
SAFEROAD UK PART NUMBER	DESCRIPTION	BEAM TO BEAM CONNECTION
SR200	SETSCREW 4.6 LIP M16x27 c/w NUT	8 (+8)
SR300	WASHER M16 18Ø HOLE	8 (+8)

BOLTING COMPONENT SCHEDULE - QUANTITIES / POST		
SAFEROAD UK PART NUMBER	DESCRIPTION	TYPE 1 CONNECTION
SR124	SETSCREW 8.8 M10 x 45 c/w NUT	1
SR152	WASHER PLATE 115 x 40 x 5 DIA. 12	1
SR301	M10 WASHER 11Ø HOLE	1
QUANTITY OF CONNECTION TYPES / 4m BEAM		
		3 (+1)

\*\* BEAM REFERENCES i.e. LEFT / RIGHT HAND ARE FOR VERGE INSTALLATIONS; FOR CENTRAL RESERVATION INSTALLATIONS THE REFERENCES ARE REVERSED

GENERAL NOTES:  
1. NUMBERS IN THE SCHEDULES SUFFIXED (+) DENOTES THE ADDITIONAL QUANTITY OF COMPONENTS REQUIRED FOR EXTREME ENDS OF INDIVIDUAL RUNS OF BARRIER.

05	12/01/23	M10 x 45 BOLT AMENDMENTS	H,B
04	26/05/21	NOTES REVISED	M,T
03	12/02/19	DETAILS REVISED	M,T
02	01/02/17	DETAILS REVISED	L,L
1.3	20/05/15	NOTES REVISED	M,T
REVn	DATE	DETAILS	INITIAL

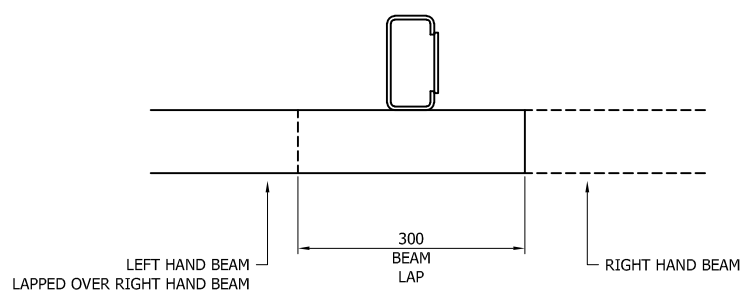
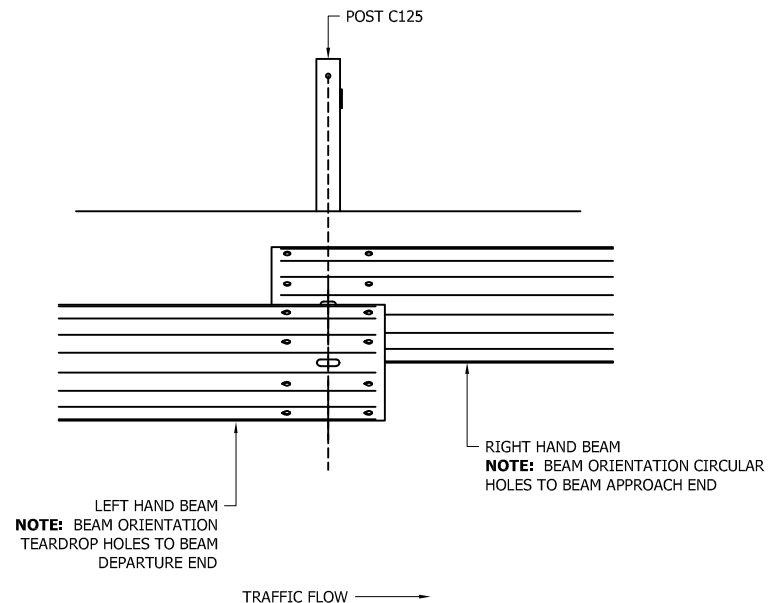
MegaRail ec3.3  
H1 W3 (VI4)  
H1.W3 VEHICLE RESTRAINT SYSTEM  
BOLTING ARRANGEMENTS

SAFEROAD®  
CONCORD HOUSE,  
BESSEMER WAY, SCUNTHORPE,  
NORTH LINCOLNSHIRE, DN15 8XE  
t: 01724 289119  
e: john.cudlipp@saferoad.co.uk

DRAWING NUMBER:	REVn:
H1W3-GA-02	05

GENERAL NOTES:

1. POSTS ARE TO BE INSTALLED WITH THE CLOSED FACE OF THE CHANNEL TOWARDS THE ON-COMING TRAFFIC.



\*\* BEAM REFERENCES i.e. LEFT / RIGHT HAND ARE FOR VERGE INSTALLATIONS; FOR CENTRAL RESERVATION INSTALLATIONS THE REFERENCES ARE REVERSED

REVn	DATE	DETAILS	INITIAL
03	12/02/19	TITLEBLOCK REVISED	M.T
02	01/02/17	DETAILS REVISED	L.L
1.3	20/05/15	REVn BOX ADDED	M.T

## MegaRail ec3.3 H1 W3 (VI4)

H1.W3 VEHICLE RESTRAINT SYSTEM  
BEAM LAPPING DETAIL FOR H1 A W3  
MEGARAIL SYSTEM

# SAFEROAD®

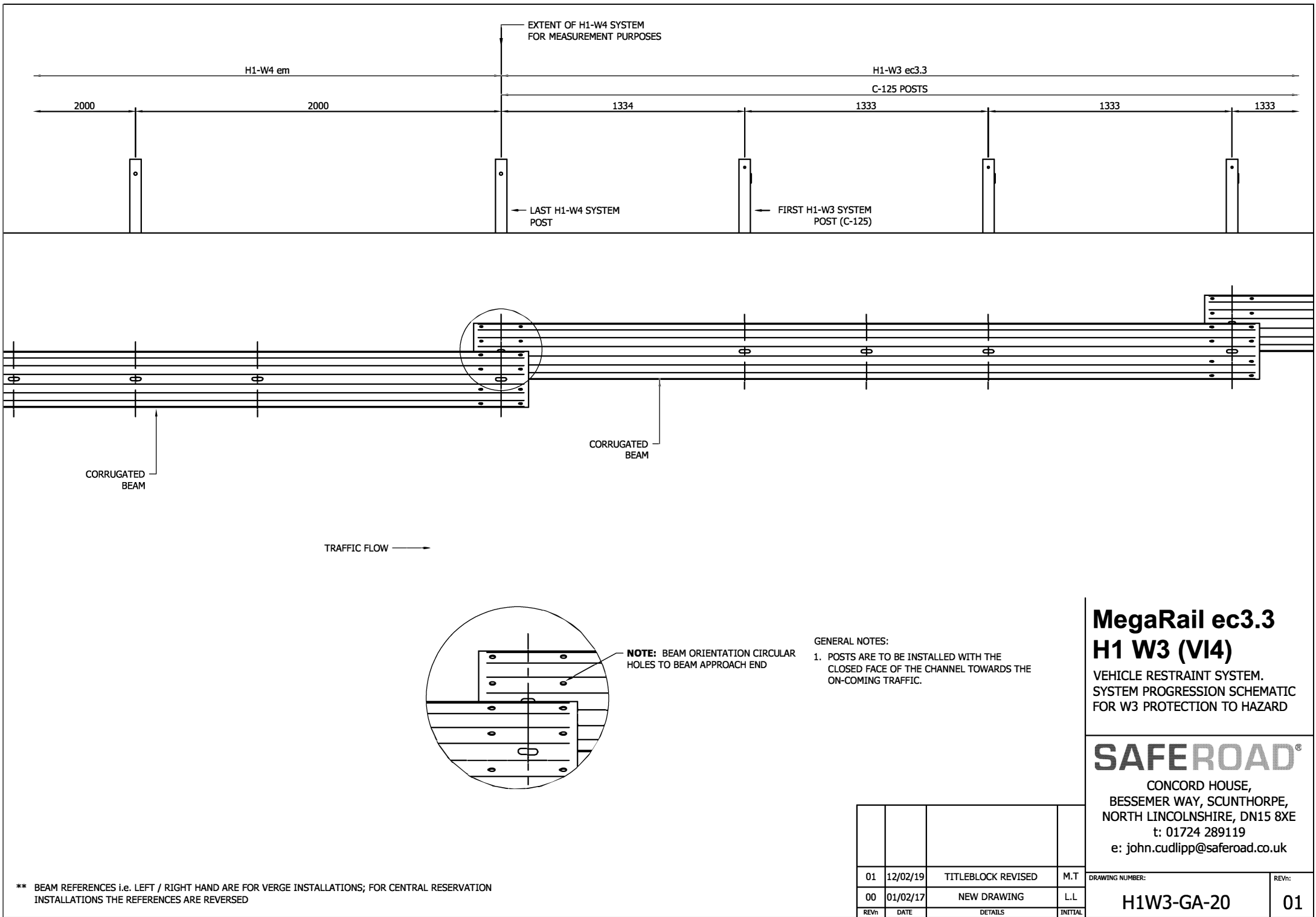
CONCORD HOUSE,  
BESSEMER WAY, SCUNTHORPE,  
NORTH LINCOLNSHIRE, DN15 8XE  
t: 01724 289119  
e: john.cudlipp@saferoad.co.uk

DRAWING NUMBER:

H1W3-GA-03

REVn:

03



- GENERAL NOTES:
1. IF THE SITE CONDITIONS DO NOT ALLOW A POST TO BE INSTALLED ON THE SYSTEM PITCH DEVIATIONS CAN BE APPLIED. THE OBSTRUCTED POST CAN BE LEFT OUT AND EXTRA POSTS INSTALLED TO SPAN THE OBSTRUCTION. THE NEW POST SPACING MUST NOT EXCEED 3000mm AND MUST NOT BE LESS THAN 500mm. ALTHOUGH IT WOULD BE BENEFICIAL TO USE THE HOLES ALREADY IN THE BEAM IT IS ACCEPTABLE TO DRILL NEW HOLES IN THE DESIRED POSITIONS AND TREAT WITH ZINC RICH PAINT.
  2. OFFSET POSTS SHOWN ON DRAWING H1W3-GA-00 CAN BE USED.

06	13/05/22	SURFACE MOUNTED POST BASE CHANGED	A.D
05	23/07/21	SURFACE MOUNTED POST DETAIL ADDED	A.D
04	25/05/21	NOTES REVISED	M.T
03	12/02/19	TITLEBLOCK REVISED	M.T
02	17/10/18	DETAILS REVISED	M.T
01	10/03/17	NOTES REVISED	L.L
00	01/02/17	NEW DRAWING	L.L
REVn	DATE	DETAILS	INITIAL

# MegaRail ec3.3 H1 W3 (VI4)

H1.W3 VEHICLE RESTRAINT SYSTEM  
DEVIATION SETTING OUT  
ARRANGEMENT

SAFEROAD®

CONCORD HOUSE,  
BESSEMER WAY, SCUNTHORPE,  
NORTH LINCOLNSHIRE, DN15 8XE  
t: 01724 289119  
e: john.cudlipp@saferoad.co.uk

DRAWING NUMBER:	REVn:
H1W3-GA-40	06