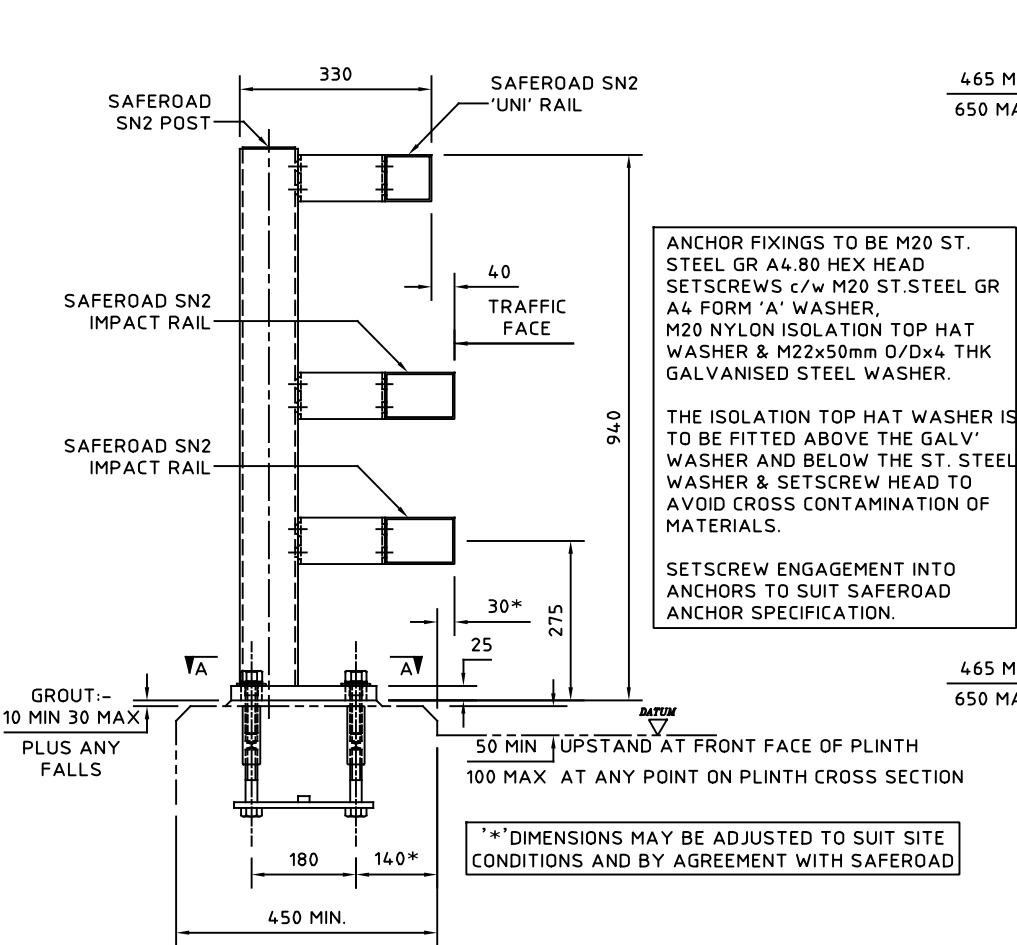


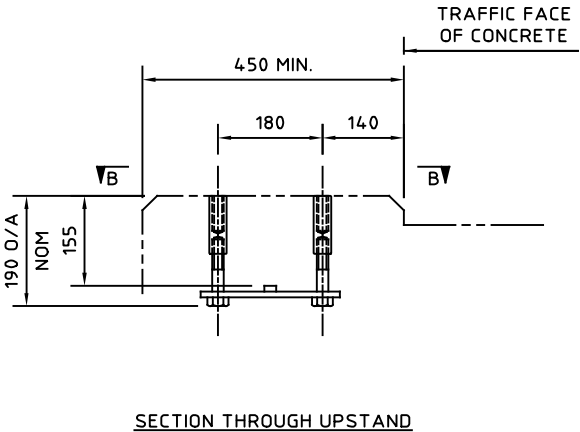
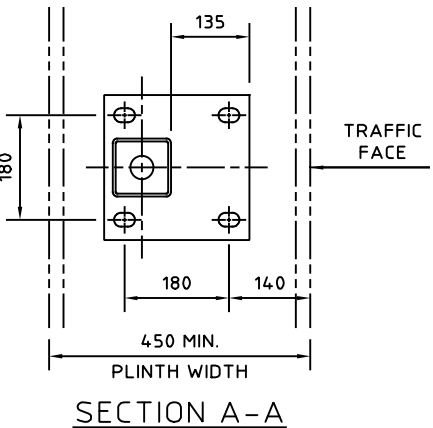
IF IN DOUBT ASK.

DRAWING NOT TO BE SCALED.



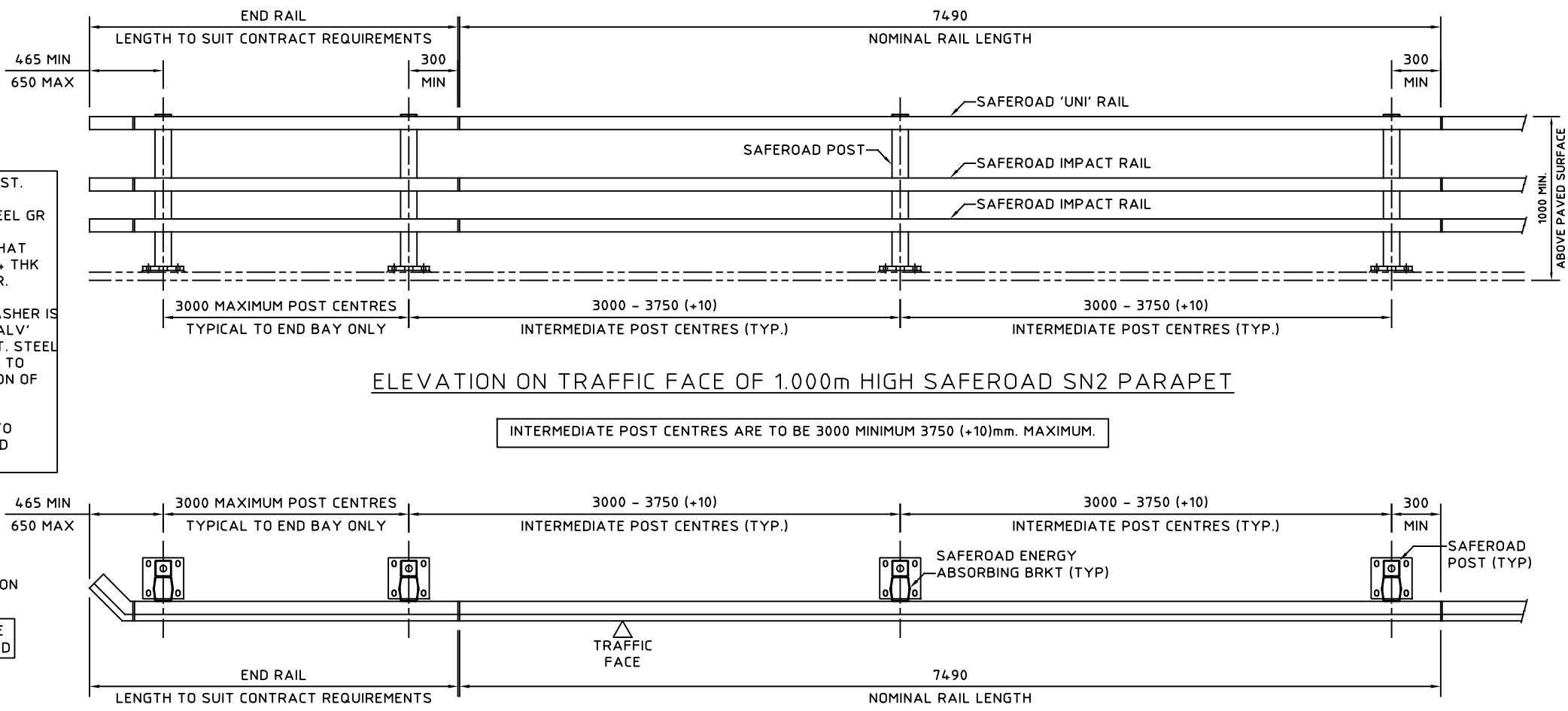
SECTION THROUGH PARAPET

ULTIMATE PLASTIC MOMENT OF RESISTANCE:- 23.6kNm.
CO-EXISTANT SHEAR:- 41.65kN.



ANCHOR CRADLE DETAIL

CAST-IN ANCHOR CRADLE MAY BE REPLACED WITH SAFEROAD DRILLPUT CHEMICAL ANCHORS OF REQUIRED SIZE & LOAD CAPACITY DETERMINED BY SITE CONDITIONS. EXISTING ANCHORS - IF PRESENT - ARE TO BE TESTED PRIOR FITTING OF PARAPET POSTS AND REPLACED IF UNSUITABLE.



- GENERAL NOTES/SPECIFICATIONS:
- ALL STEEL SECTIONS TO BE IN ACCORDANCE WITH BS.EN. 10025-2, BS.EN.10219-1 AND BS.EN.10219-2.
 - ALL MATERIAL TO BE GALVANISED TO BS.EN.ISO 1461:2009
 - HOLDING DOWN SETSCREWS TO BE TO BS.3692 AND BE ST. STEEL TO BS.EN.ISO 3506-1 GRADE A4 CLASS 80. ALL OTHER BOLTS/SETSCREWS TO BE GALVANISED STEEL TO CONFORM TO BS.3692 & BS.EN.ISO 4014 GRADE 8.8.
 - ALL NUTS TO BE GALVANISED STEEL TO CONFORM TO BS.3692 AND BS.EN.ISO 4032 GRADE 8.
 - GALVANISED PLAIN WASHERS TO CONFORM TO BS.4320.
 - SPRING WASHERS TO CONFORM TO BS.4464.
 - STAINLESS STEEL WASHERS TO BE GRADE A4.
 - PARAPET PERFORMANCE IS TO BS.EN.1317-1 & BS.EN.1317-2. IMPACT TEST CRITERIA:- TB11 & TB32. CONTAINMENT LEVEL:- N2. WORKING WIDTH:- W4 (1.3m). IMPACT SEVERITY LEVEL:- B
 - POSTS TO BE VERTICAL TO WITHIN ±15mm OVER 1000mm.
 - RAILS TO BE SET IN A FLOWING LINE AT A MINIMUM HEIGHT OF 1000mm ABOVE THE ADJOINING ROAD/PATH SURFACE.
 - FOR MATERIAL WEIGHTS REFER TO COMPONENT DRAWINGS.

06	20.10.17	POST CENTRES REVISED TO LATEST TEST DETAILS	M.T
05	15.01.13	CHANGED TO SAFEROAD UK & CE LOGO ADDED	JA
04	12.08.10	NOTES REVISED	P.S
03	21.04.10	MINOR REVISIONS	P.S
02	23.03.10	MINOR REVISIONS	P.S
01	19.03.10	FLARE ADDED, MIN' HEIGHT ADDED, NOTES REVISED.	P.S
REVN.	DATE	REMARKS	SIG.

SAFEROAD
VRS LTD
Concord House,
Bessemer Way,
Scunthorpe,
North Lincolnshire, DN15 8XE
Tel: 01724 289119 Fax: 01724 281478

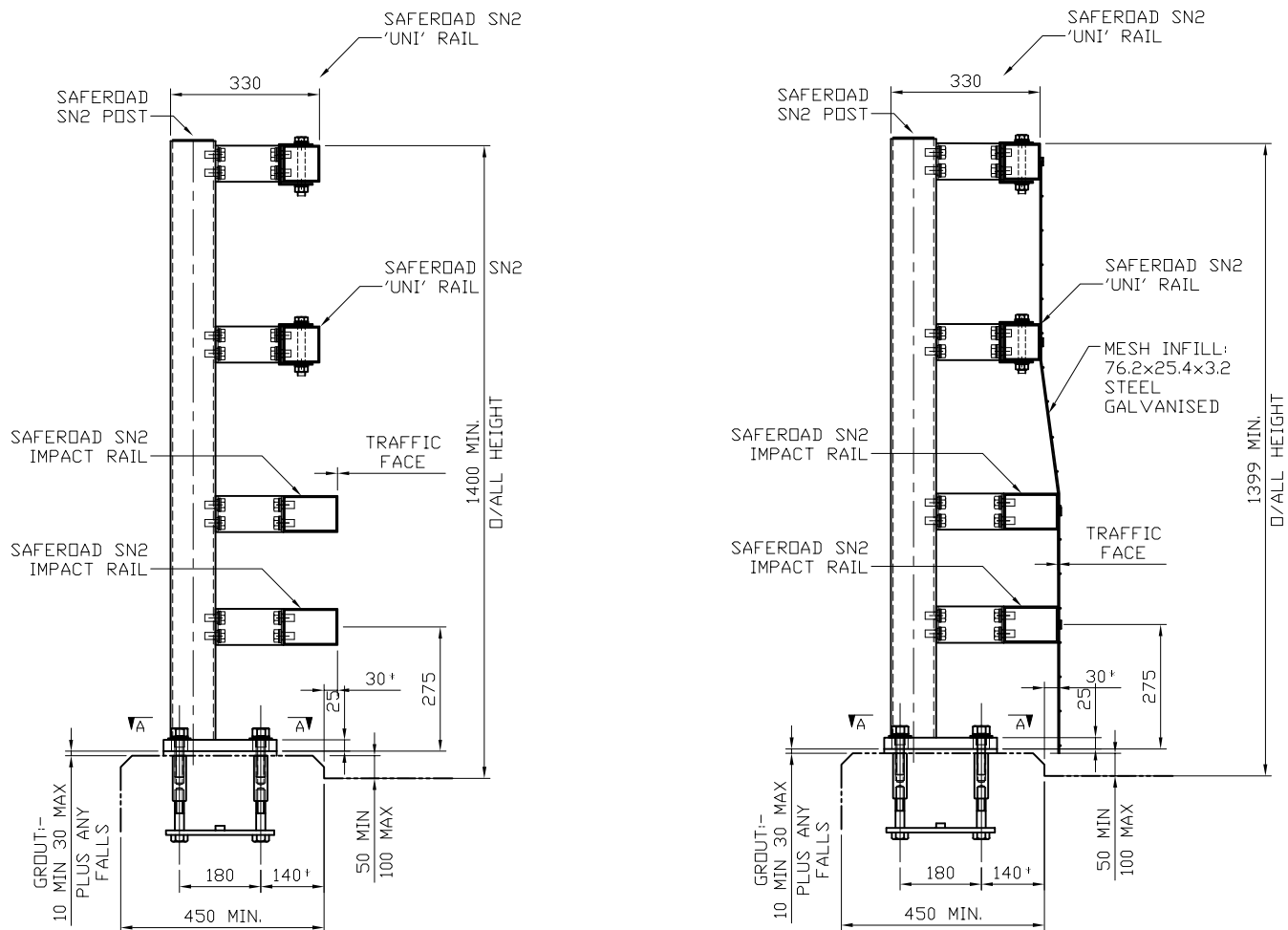
TITLE:- GENERAL ARRANGEMENT OF SAFEROAD SN2 - N2 VEHICLE PARAPET
(110km/h TRAFFIC SPEED) TO BS.EN.1317-1 & 2.
3 RAIL SYSTEM - 1.000m NOMINAL HEIGHT



ORDER No:-	MATL:-	DRAWN:-	CHECKED:-	CHECKED QA:-
-	-	P.S	GRD	-
ISSUE DATE:-	PROJECTION:-	DATE:-	SCALE:-	APPROVED:-
-	First Angle	16.02.10	N.T.S	-
DRG NO:- SN2/GA-001				REV:- 06

IF IN DOUBT ASK.

DRAWING NOT TO BE SCALED.

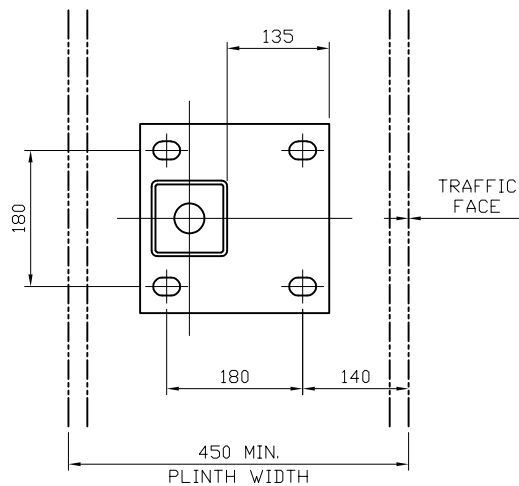


SECTION THROUGH PARAPET

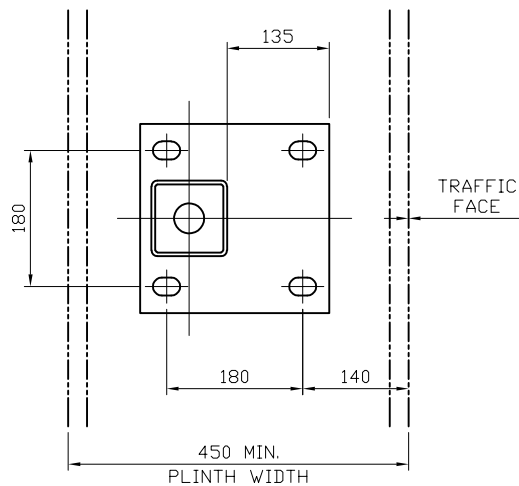
SN2/140/O
SCALE 1:16

¹ DIMENSIONS MAY BE ADJUSTED TO SUIT SITE CONDITIONS AND BY AGREEMENT WITH SAFEROAD

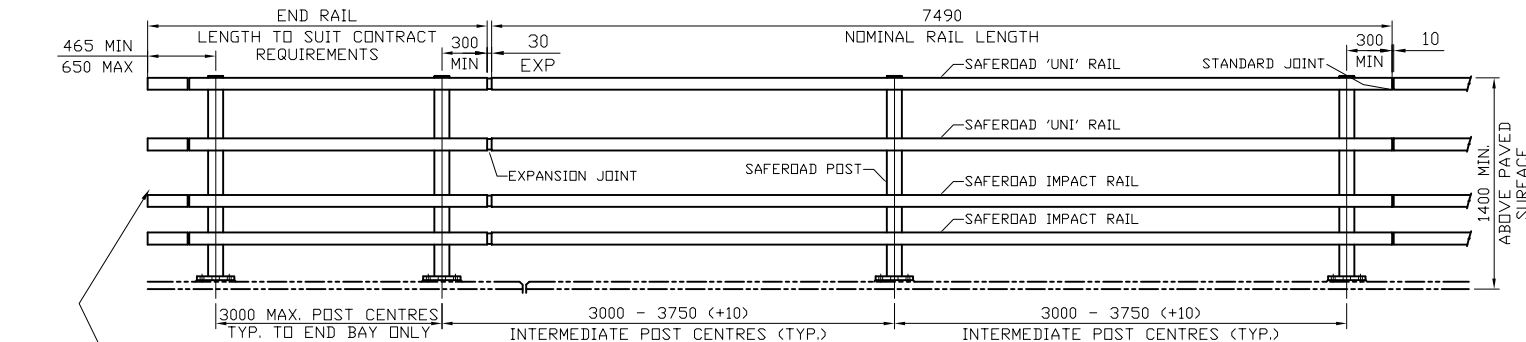
SECTION THROUGH PARAPET WITH MESH INFILL - SN2/140/M
SCALE 1:16



SECTION A-A
BASEPLATE DETAIL
SCALE 1:10

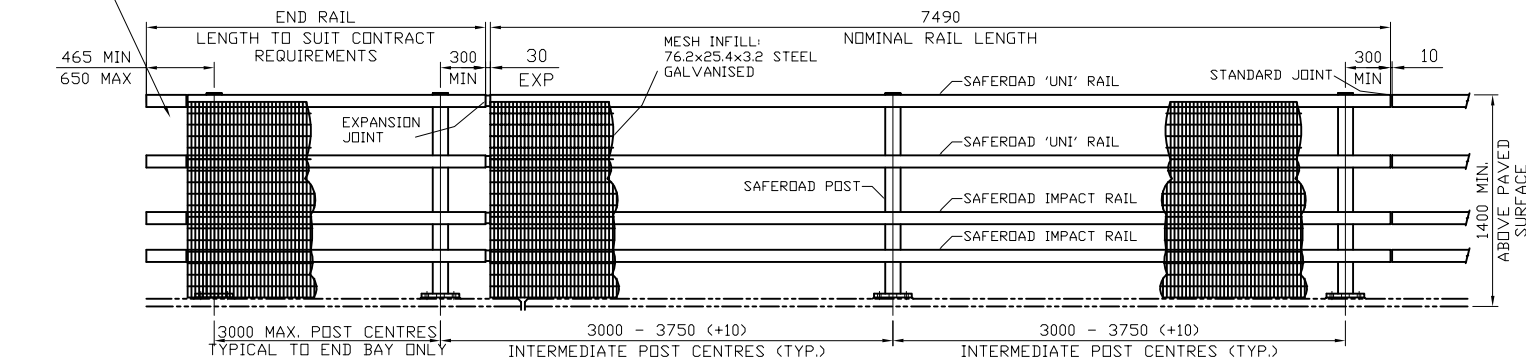


SECTION B-B
BASEPLATE DETAIL
SCALE 1:10

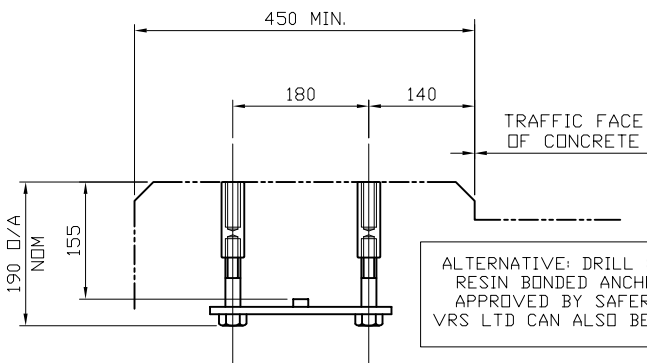


ELEVATION AND GENERAL ARRANGEMENT OF PARAPET
SCALE 1:50

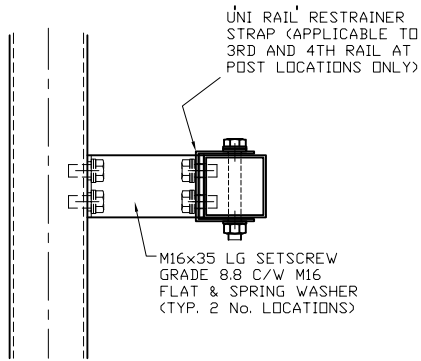
RAIL ENDS SHOWN FLARED BACK AT 45° FOR DETAILS OF PARAPET TO MEGAFLEX TRANSITION SEE DRG. No. PA 17962 & PA 17963



ELEVATION AND GENERAL ARRANGEMENT OF PARAPET WITH MESH INFILL
SCALE 1:50



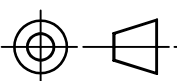
CAST IN CRADLE DETAIL
SCALE 1:10



RAIL TO POST FIXING DETAIL
SCALE 1:5

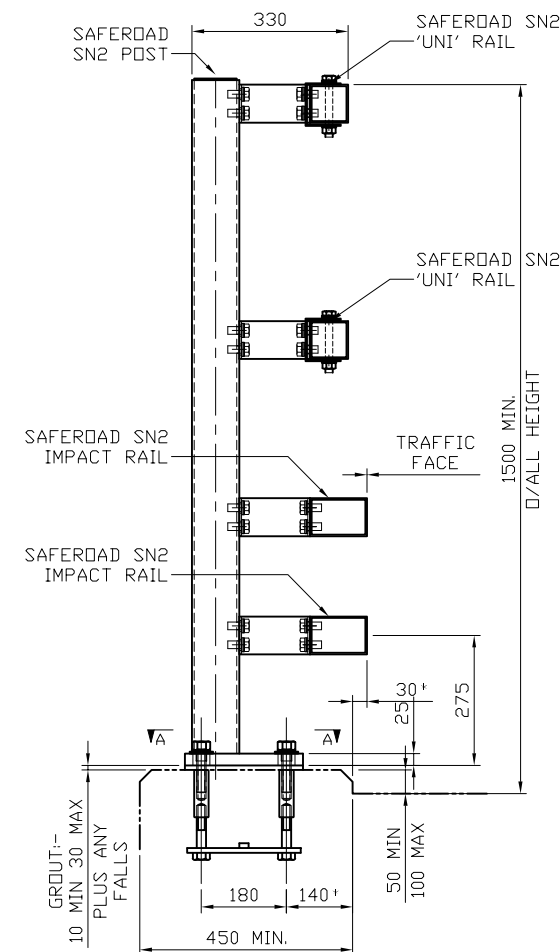
UNFACTORED POST BASE LOADS		PARAPET PERFORMANCE	
ULTIMATE PLASTIC MOMENT OF RESISTANCE OF POST	23.6 kNm	IMPACT TEST CRITERIA	TB11 & TB32
		CONTAINMENT LEVEL	N2
		WORKING WIDTH	W4 (1.3m)
		IMPACT SEVERITY LEVEL	B
CO-EXISTANT SHEAR	41.65 kN	DYNAMIC DEFLECTION	0.7m

- GENERAL NOTES
- ALL STEEL SECTIONS TO BE IN ACCORDANCE WITH BS.EN. 10025-2, BS.EN.10219-1 AND BS.EN.10219-2.
 - ALL MATERIAL TO BE GALVANISED TO BS.EN.ISO 1461:2009
 - HOLDING DOWN SETSCREWS TO BE TO BS.3692 AND BE ST. STEEL TO BS.EN.ISO 3506-1 GRADE A4 CLASS 80. ALL OTHER BOLTS/SETSCREWS TO BE GALVANISED STEEL TO CONFORM TO BS.3692 & BS.EN.ISO 4014 GRADE 8.8.
 - ALL NUTS TO BE GALVANISED STEEL TO CONFORM TO BS.3692 AND BS.EN.ISO 4032 GRADE 8.
 - GALVANISED PLAIN WASHERS TO CONFORM TO BS.4320.
 - SPRING WASHERS TO CONFORM TO BS.4464.
 - STAINLESS STEEL WASHERS TO BE GRADE A4.
 - PARAPET PERFORMANCE IS TO BS.EN.1317-1 & BS.EN.1317-2.
 - POSTS TO BE VERTICAL TO WITHIN ± 15 mm OVER 1000mm.
 - RAILS TO BE SET IN A FLOWING LINE AT A MINIMUM HEIGHT OF 1000mm ABOVE THE ADJOINING ROAD/PATH SURFACE.
 - FOR MATERIAL WEIGHTS REFER TO COMPONENT DRAWINGS.



IF IN DOUBT ASK.

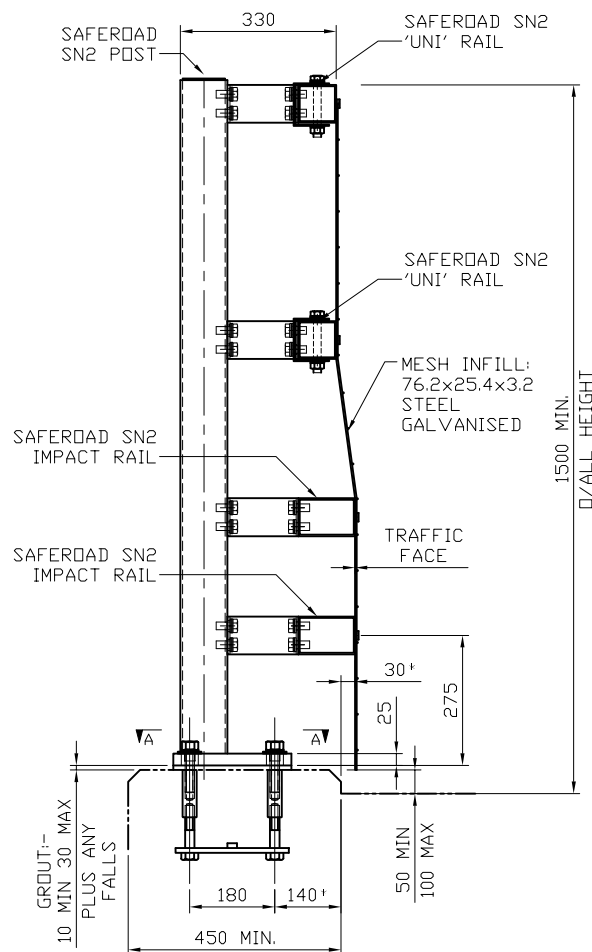
DRAWING NOT TO BE SCALED.



SECTION THROUGH PARAPET

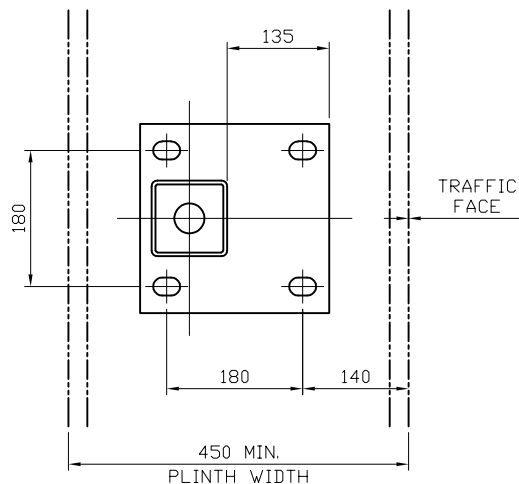
SN2/150/O
SCALE 1:6

¹ DIMENSIONS MAY BE ADJUSTED TO SUIT SITE CONDITIONS AND BY AGREEMENT WITH SAFEROAD

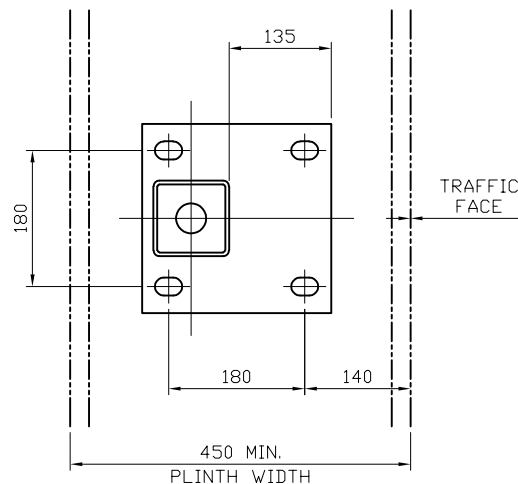


SECTION THROUGH PARAPET WITH MESH INFILL - SN2/150/M

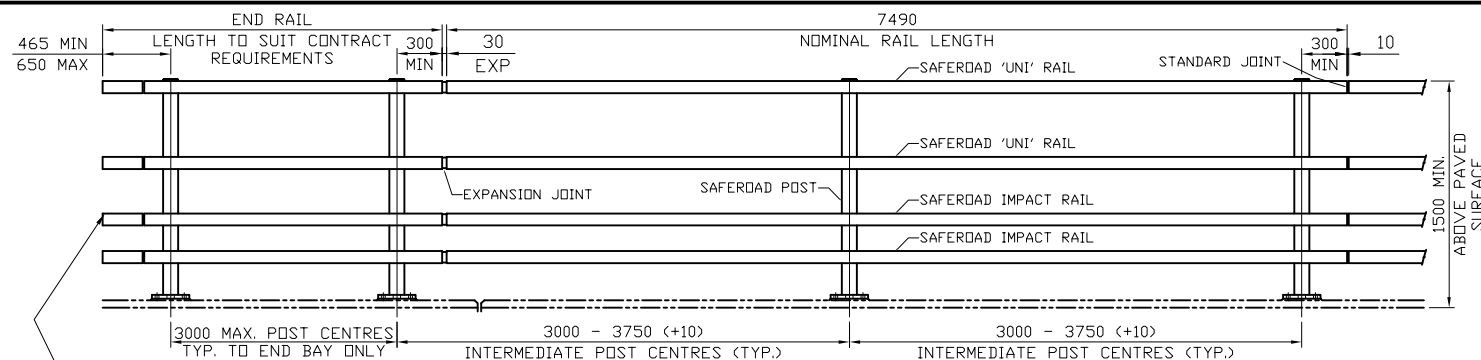
SCALE 1:6



SECTION A-A
BASEPLATE DETAIL
SCALE 1:10

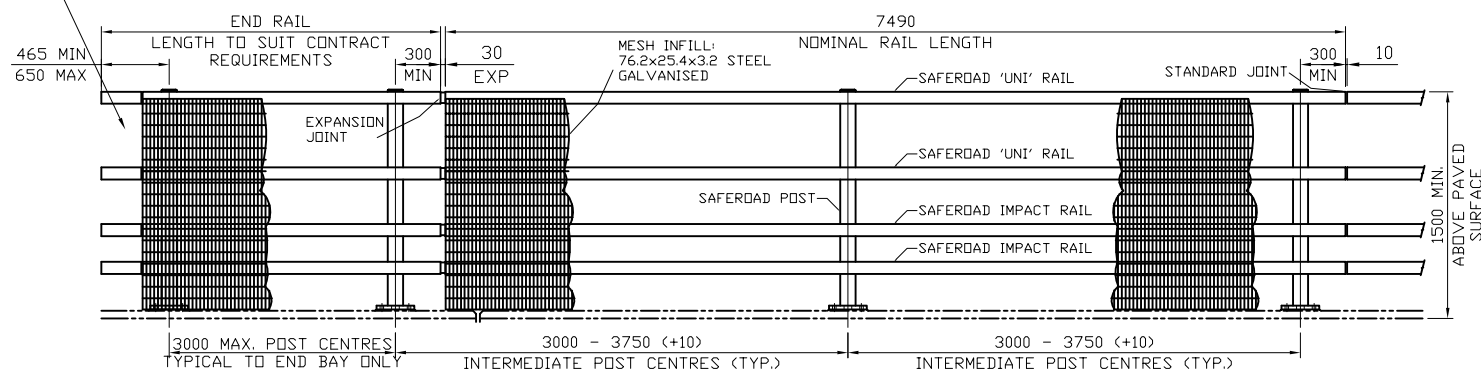


SECTION B-B
BASEPLATE DETAIL
SCALE 1:10



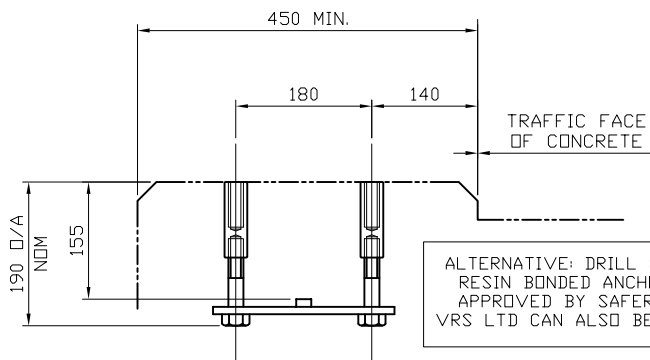
ELEVATION AND GENERAL ARRANGEMENT OF PARAPET

SCALE 1:50



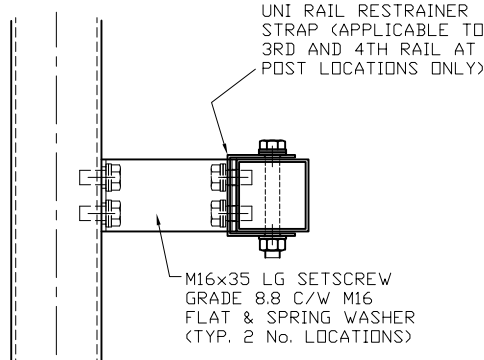
ELEVATION AND GENERAL ARRANGEMENT OF PARAPET WITH MESH INFILL

SCALE 1:50



CAST IN CRADLE DETAIL

SCALE 1:10



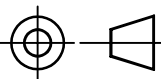
RAIL TO POST FIXING DETAIL

SCALE 1:5

PARAPET PERFORMANCE			
UNFACTORED POST BASE LOADS		IMPACT TEST CRITERIA	TB11 & TB32
ULTIMATE PLASTIC MOMENT OF RESISTANCE OF POST		CONTAINMENT LEVEL	N2
CO-EXISTANT SHEAR		WORKING WIDTH	W4 (1.3m)
		IMPACT SEVERITY LEVEL	B
		DYNAMIC DEFLECTION	0.7m

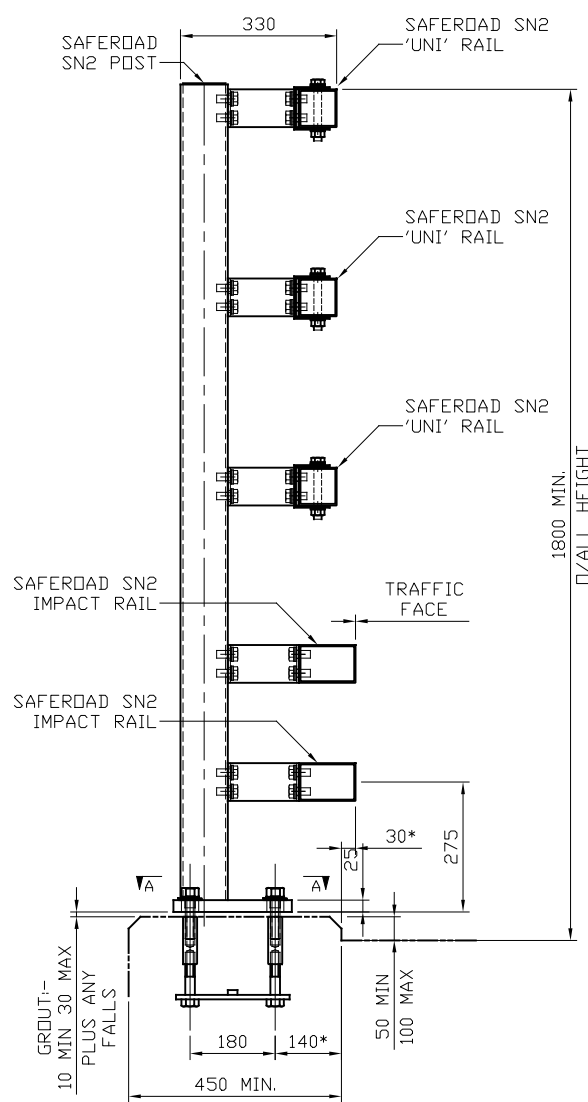
GENERAL NOTES

- ALL STEEL SECTIONS TO BE IN ACCORDANCE WITH BS.EN. 10025-2, BS.EN.10219-1 AND BS.EN.10219-2.
- ALL MATERIAL TO BE GALVANISED TO BS.EN.ISO 1461:2009
- HOLDING DOWN SETSCREWS TO BE TO BS.3692 AND BE ST. STEEL TO BS.EN.ISO 3506-1 GRADE A4 CLASS 80. ALL OTHER BOLTS/SETSCREWS TO BE GALVANISED STEEL TO CONFORM TO BS.3692 & BS.EN.ISO 4014 GRADE 8.8.
- ALL NUTS TO BE GALVANISED STEEL TO CONFORM TO BS.3692 AND BS.EN.ISO 4032 GRADE 8.
- GALVANISED PLAIN WASHERS TO CONFORM TO BS.4320.
- SPRING WASHERS TO CONFORM TO BS.4464.
- STAINLESS STEEL WASHERS TO BE GRADE A4.
- PARAPET PERFORMANCE IS TO BS.EN.1317-1 & BS.EN.1317-2.
- POSTS TO BE VERTICAL TO WITHIN $\pm 15\text{mm}$ OVER 1000mm.
- RAILS TO BE SET IN A FLOWING LINE AT A MINIMUM HEIGHT OF 1000mm ABOVE THE ADJOINING ROAD/PATH SURFACE.
- FOR MATERIAL WEIGHTS REFER TO COMPONENT DRAWINGS.

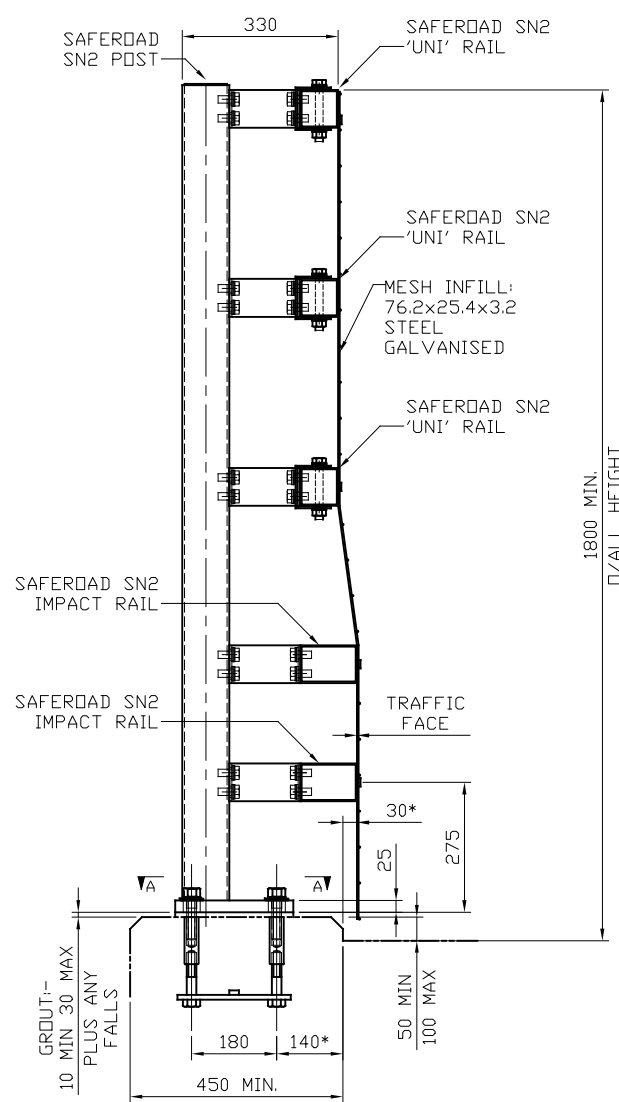


IF IN DOUBT ASK.

DRAWING NOT TO BE SCALED.

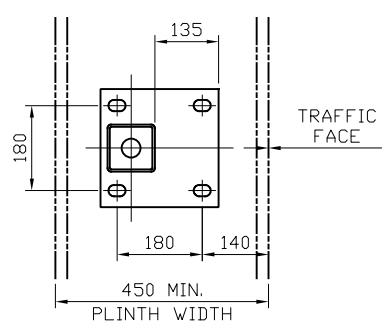


SECTION THROUGH PARAPET
SN2/1.80
SCALE 1:16

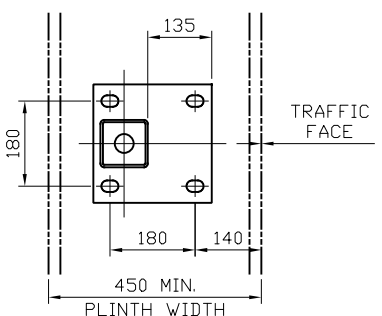


SECTION THROUGH PARAPET
WITH MESH INFILL - SN2/1.80/M
SCALE 1:16

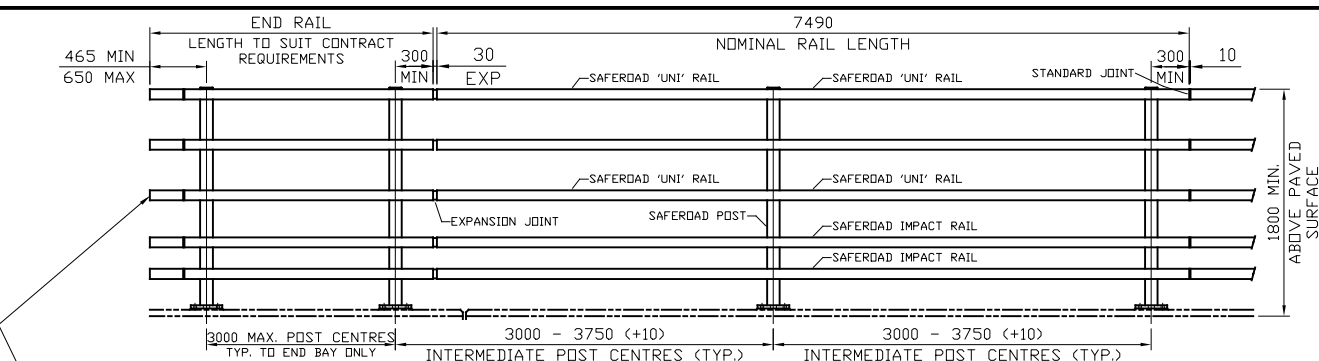
*DIMENSIONS MAY BE ADJUSTED TO SUIT SITE
CONDITIONS AND BY AGREEMENT WITH SAFEROAD



SECTION A-A
BASEPLATE DETAIL
SCALE: 1:10

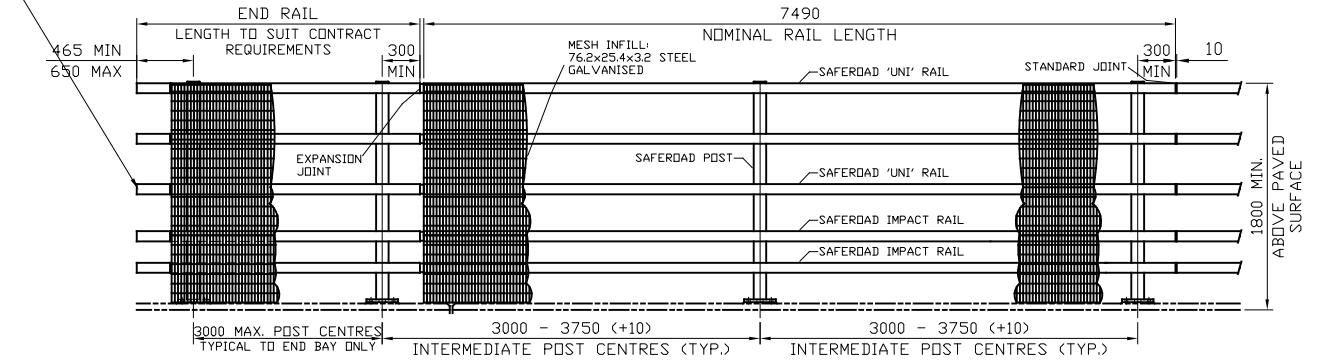


SECTION B-B
BASEPLATE DETAIL
SCALE: 1:10

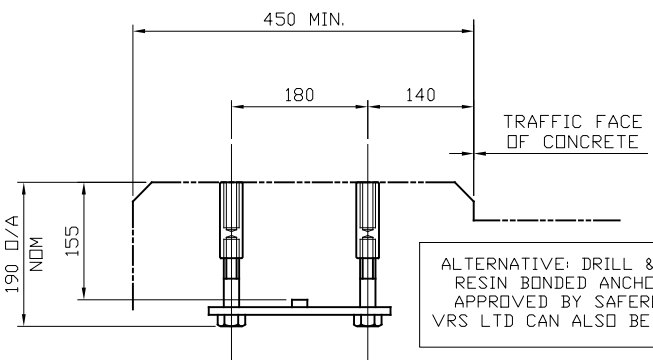


ELEVATION AND GENERAL ARRANGMENT OF PARAPET
SCALE: 1:60

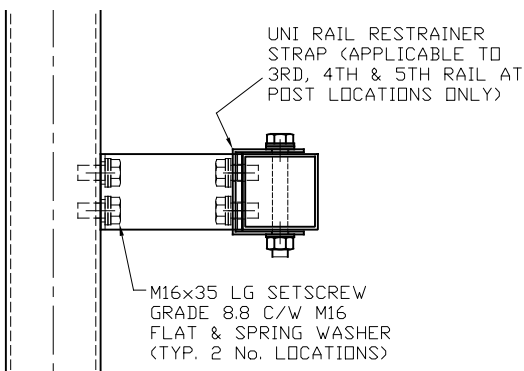
RAIL ENDS SHOWN FLARED BACK
AT 45° FOR DETAILS OF PARAPET
TO MEGAFLEX TRANSITION SEE
DRG. No. PA 17962 & PA 17963



ELEVATION AND GENERAL ARRANGMENT OF PARAPET WITH MESH INFILL
SCALE: 1:60



CAST IN CRADLE DETAIL
SCALE: 1:10



RAIL TO POST FIXING DETAIL
SCALE: 1:8

PARAPET PERFORMANCE			
IMPACT TEST CRITERIA		TB11 & TB32	
CONTAINMENT LEVEL		N2	
WORKING WIDTH		W4 (1.3m)	
IMPACT SEVERITY LEVEL		B	
CO-EXISTANT SHEAR		0.7m	

- GENERAL NOTES
- ALL STEEL SECTIONS TO BE IN ACCORDANCE WITH BS.EN. 10025-2, BS.EN.10219-1 AND BS.EN.10219-2.
 - ALL MATERIAL TO BE GALVANISED TO BS.EN.ISO 1461:2009
 - HOLDING DOWN SETSCREWS TO BE TO BS.3692 AND BE ST. STEEL TO BS.EN.ISO 3506-1 GRADE A4 CLASS 80. ALL OTHER BOLTS/SETSCREWS TO BE GALVANISED STEEL TO CONFORM TO BS.3692 & BS.EN.ISO 4014 GRADE 8.8.
 - ALL NUTS TO BE GALVANISED STEEL TO CONFORM TO BS.3692 AND BS.EN.ISO 4032 GRADE 8.
 - GALVANISED PLAIN WASHERS TO CONFORM TO BS.4320.
 - SPRING WASHERS TO CONFORM TO BS.4464.
 - STAINLESS STEEL WASHERS TO BE GRADE A4.
 - PARAPET PERFORMANCE IS TO BS.EN.1317-1 & BS.EN.1317-2.
 - POSTS TO BE VERTICAL TO WITHIN ± 15 mm OVER 1000mm.
 - RAILS TO BE SET IN A FLOWING LINE AT A MINIMUM HEIGHT OF 1000mm ABOVE THE ADJOINING ROAD/PATH SURFACE.
 - FOR MATERIAL WEIGHTS REFER TO COMPONENT DRAWINGS.