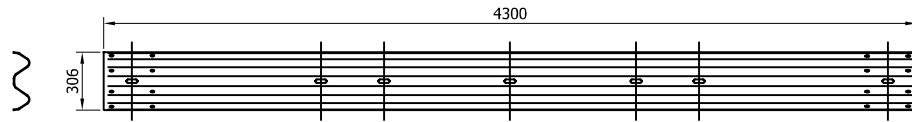
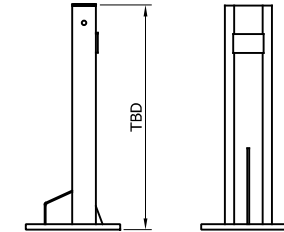
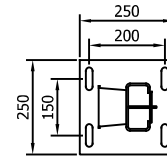


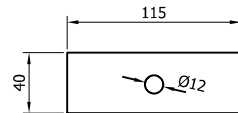
SR001 - STANDARD 3MM BEAM
(CAN BE SUBSTITUTED BY BEAM SR028)



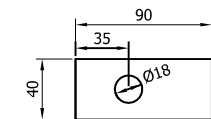
SR028 - A PROFILE 3MM BEAM



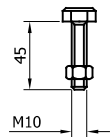
SR063 - C125 BS
VERTICAL POST



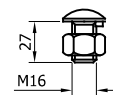
SR152 - WASHER PLATE
115 x 40 x 5 DIA. 12



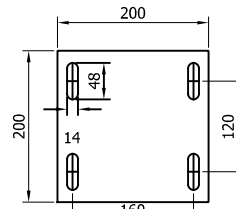
SR154 - WASHER PLATE
90 x 40 x 5 DIA. 18
NOTE -WASHER IS FOR USE
WITH THE HOLDING DOWN
FIXINGS



SR204 - SETSCREW
4.6 M10x45 c/w NUT



SR200 - SETSCREW 4.6
LIP M16x27 c/w NUT



SR115 - GASKET
(NEOPRENE)



SR301 - M10
WASHER 11Ø HOLE



SR300 - M16
WASHER 18Ø HOLE

GENERAL NOTES:

1. CONCRETE TRENCH ONLY - MINIMUM LENGTH 4M
2. FOR DEVIATIONS SEE H1W2-GA-40
3. CAN CONNECT TO HYBRID GA72 OR GA120/GA140 ONLY UNDER SPECIAL DETAIL APPROVED BY SAFEROAD
4. SYSTEM HAS A V.I. RATING OF VI3
5. WHERE A KERB IS PRESENT THE MAXIMUM HEIGHT IS 100mm. SHOULD THE KERB BE HIGHER THAN 100mm AND THE BARRIER SETBACK LESS THAN 250mm FROM FACE OF KERB, THE SYSTEM HEIGHT IS MEASURED FROM THE CARRIAGEWAY. IF THE SETBACK IS GREATER THAN 250mm FROM THE FACE OF KERB, THE SYSTEM HEIGHT IS MEASURED FROM THE TOP OF THE KERB OR ADJACENT GROUND LEVEL.

08	18/10/22	DETAILS UPDATED	H.B
07	22/09/22	NOTE 6 ADDED	A.D
06	08/07/22	DETAILS CHANGED	A.D
05	19/11/19	BEAM DETAILS ADDED	M.T
04	01/04/19	BEAM DETAILS REVISED	M.T
03	12/02/19	TITLEBLOCK REVISED	H.B
02	31/01/17	STOCK & CODES REVISED	L.L
1.3	20/05/15	DETAILS REVISED	M.T
REVn	DATE	DETAILS	INITIAL

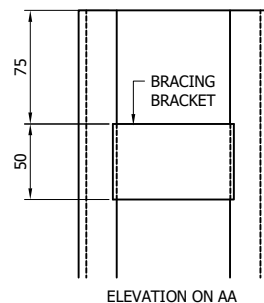
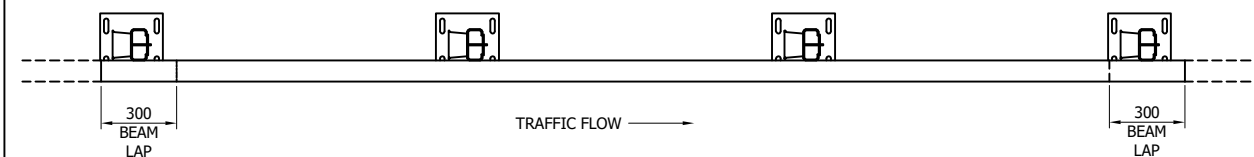
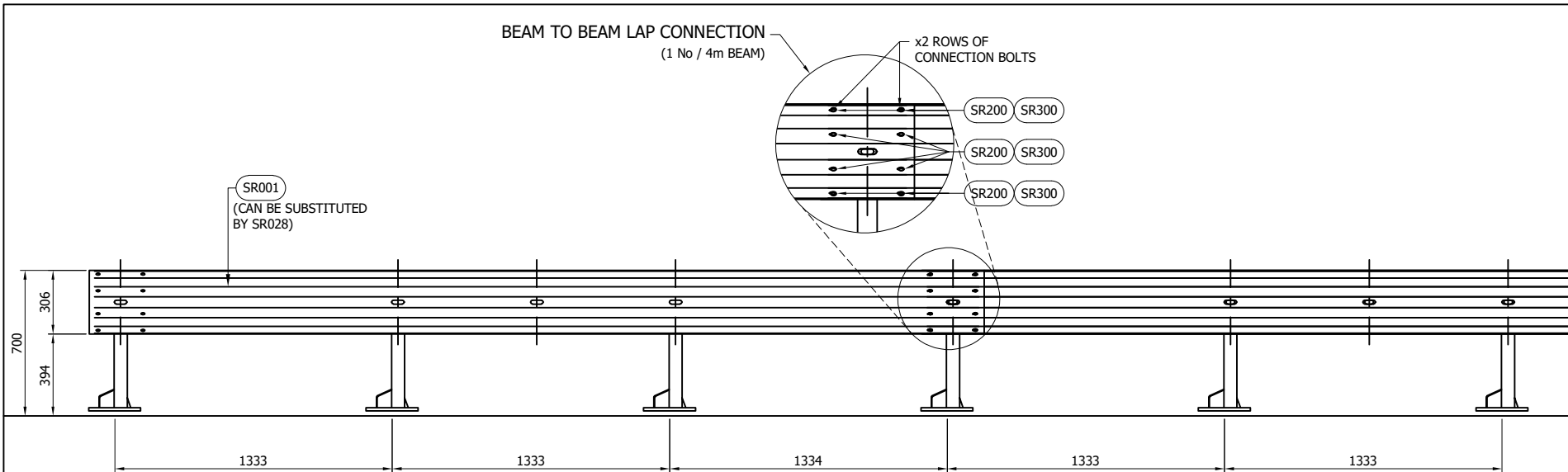
MegaRail bs H1 W2 (VI 3)

H1.W2 VEHICLE RESTRAINT SYSTEM
COMPONENTS SCHEMATIC

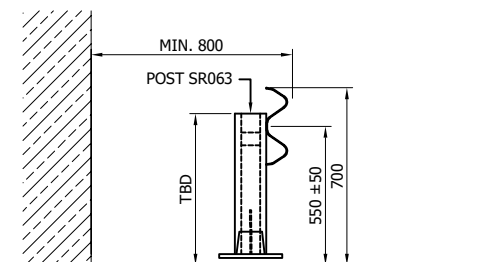
SAFEROAD®

CONCORD HOUSE,
BESSEMER WAY, SCUNTHORPE,
NORTH LINCOLNSHIRE, DN15 8XE
t: 01724 289119
e: john.cudlipp@saferoad.co.uk

DRAWING NUMBER:	REVn:
H1W2-GA-00	08



ELEVATION ON AA



GENERAL NOTES:

1. POSTS ARE TO BE INSTALLED WITH THE CLOSED FACE OF THE CHANNEL TOWARDS THE ON-COMING TRAFFIC.
2. USE AN M16 FIXING ABLE TO RESIST A TENSILE LOAD OF 50kN
3. WHEN TYING INTO ADJACENT VRS ONLY ONE WORKING WIDTH DIFFERENCE IS PERMITTED.
4. SEE MR-GA-001 & MR-GA-003 FOR SYSTEM HEIGHT WITH REFERENCE TO SETBACK & KERB HEIGHT
5. FOR MINIMUM LENGTH OF FULL HEIGHT VRS REFER TO SAFEROAD MEGARAIL MANUAL.

05	18/10/22	DETAILS UPDATED	H.B
04	19/11/19	BEAM DETAILS ADDED	H.B
03	12/02/19	MINOR CHANGES AND TITLEBLOCK REVISED	H.B
02	31/01/17	DETAILS & CODES REVISED	L.L
1.4	20/05/15	DETAILS REVISED	M.T
REVn	DATE	DETAILS	INITIAL

MegaRail bs H1 W2 (VI 3)

H1.W2 VEHICLE RESTRAINT SYSTEM
ASSEMBLY AND SETTING OUT
ARRANGEMENT

CONCORD HOUSE,
BESSEMER WAY, SCUNTHORPE,
NORTH LINCOLNSHIRE, DN15 8XE
t: 01724 289119
e: john.cudlipp@saferoad.co.uk

DRAWING NUMBER:

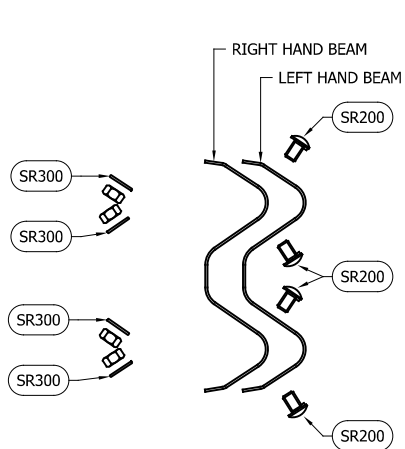
H1W2-GA-01

REVn:

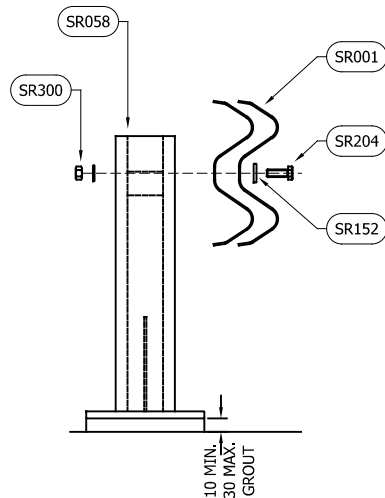
05

TABLE 'A' - SYSTEM COMPONENT SCHEDULE - QUANTITIES / 4m BEAM

SAFEROAD UK PART NUMBER	DESCRIPTION	QUANTITY
SR001	3mm BEAM (CAN BE SUBSTITUTED BY SR028)	1
SR063	C125 BS VERTICAL POST	3
SR115	GASKET (NEOPRENE)	3
FOR SCHEDULE OF BOLTED CONNECTIONS REFER TO DRAWING NUMBER H1W2-GA-02		



BEAM TO BEAM CONNECTION
ARRANGEMENT
(x2 LOCATIONS / BEAM END)



BEAM TO POST
CONNECTION

BOLTING COMPONENT SCHEDULE - QUANTITIES / BEAM		
SAFEROAD UK PART NUMBER	DESCRIPTION	BEAM TO BEAM CONNECTION
SR200	SETSCREW 4.6 LIP M16x27 c/w NUT	8 (+8)
SR300	WASHER M16 18Ø HOLE	8 (+8)

** BEAM REFERENCES i.e. LEFT / RIGHT HAND ARE FOR VERGE INSTALLATIONS; FOR CENTRAL RESERVATION INSTALLATIONS THE REFERENCES ARE REVERSED

BOLTING COMPONENT SCHEDULE - QUANTITIES / POST		
SAFEROAD UK PART NUMBER	DESCRIPTION	TYPE 1 CONNECTION
SR204	SETSCREW 4.6 M10 x 45 c/w NUT	1
SR152	WASHER PLATE 115 x 40 x 5 DIA. 12	1
SR301	M10 WASHER 11Ø HOLE	1
QUANTITY OF CONNECTION TYPES / 4m BEAM		

GENERAL NOTES:
1. NUMBERS IN THE SCHEDULES SUFFIXED (+) DENOTES THE ADDITIONAL QUANTITY OF COMPONENTS REQUIRED FOR EXTREME ENDS OF INDIVIDUAL RUNS OF BARRIER.

REVn	DATE	DETAILS	INITIAL
04	18/10/22	DETAILS UPDATED	H.B
03	12/02/19	CODE CHANGES AND TITLEBLOCK REVISED	H.B
02	31/01/17	DETAILS REVISED	L.L
1.2	20/05/15	DETAILS REVISED	M.T

MegaRail bs H1 W2 (VI 3)

H1.W2 VEHICLE RESTRAINT SYSTEM
BOLTING ARRANGEMENTS

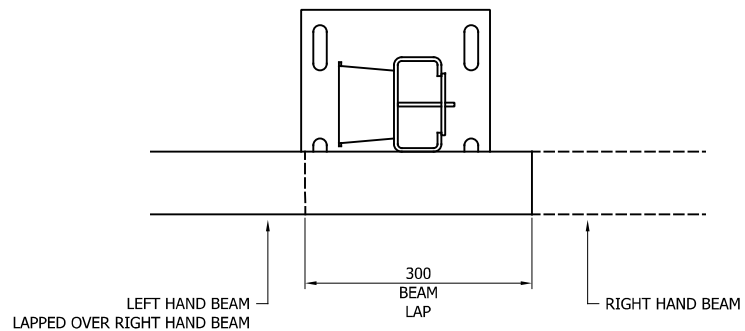
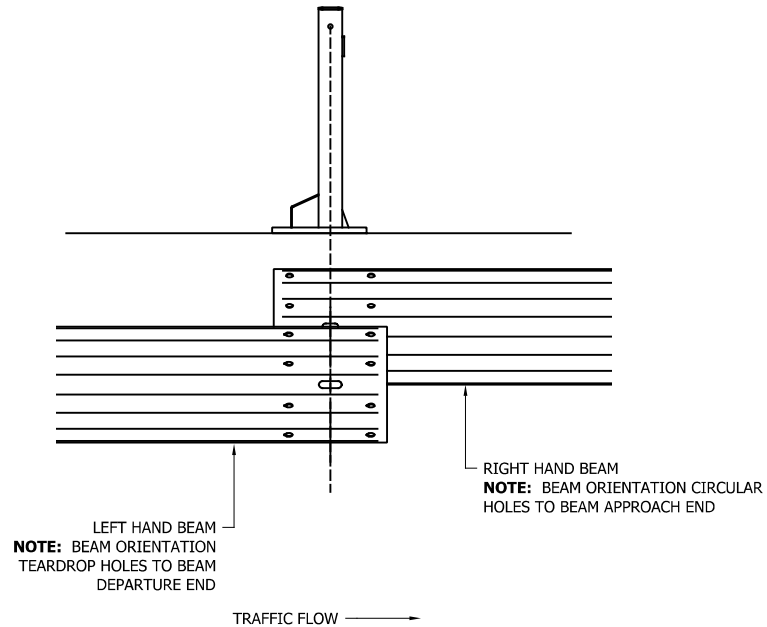
SAFEROAD®

CONCORD HOUSE,
BESSEMER WAY, SCUNTHORPE,
NORTH LINCOLNSHIRE, DN15 8XE
t: 01724 289119
e: john.cudlipp@saferoad.co.uk

DRAWING NUMBER:	REVn:
H1W2-GA-02	04

GENERAL NOTES:

1. POSTS ARE TO BE INSTALLED WITH THE CLOSED FACE OF THE CHANNEL TOWARDS THE ON-COMING TRAFFIC.



** BEAM REFERENCES i.e. LEFT / RIGHT HAND ARE FOR VERGE INSTALLATIONS; FOR CENTRAL RESERVATION INSTALLATIONS THE REFERENCES ARE REVERSED

REVn	DATE	DETAILS	INITIAL
04	18/10/22	DETAILS UPDATED	H.B
03	12/02/19	TITLEBLOCK REVISED	H.B
02	31/01/17	DETAILS REVISED	L.L
1.1	20/05/15	DETAILS REVISED	M.T

MegaRail bs H1 W2 (VI 3)

H1.W2 VEHICLE RESTRAINT SYSTEM.
BEAM LAPPING DETAIL FOR H1 A W2
SYSTEM.

SAFEROAD®

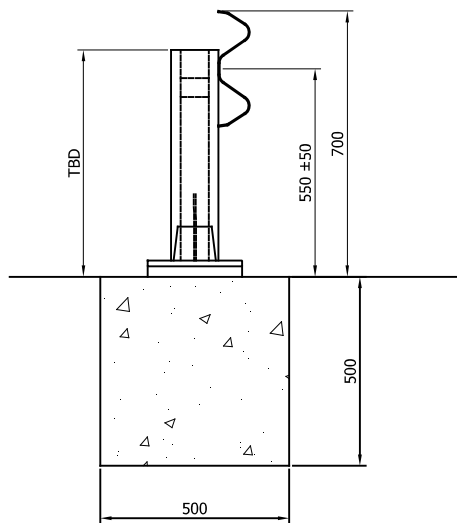
CONCORD HOUSE,
BESSEMER WAY, SCUNTHORPE,
NORTH LINCOLNSHIRE, DN15 8XE
t: 01724 289119
e: john.cudlipp@saferoad.co.uk

DRAWING NUMBER:

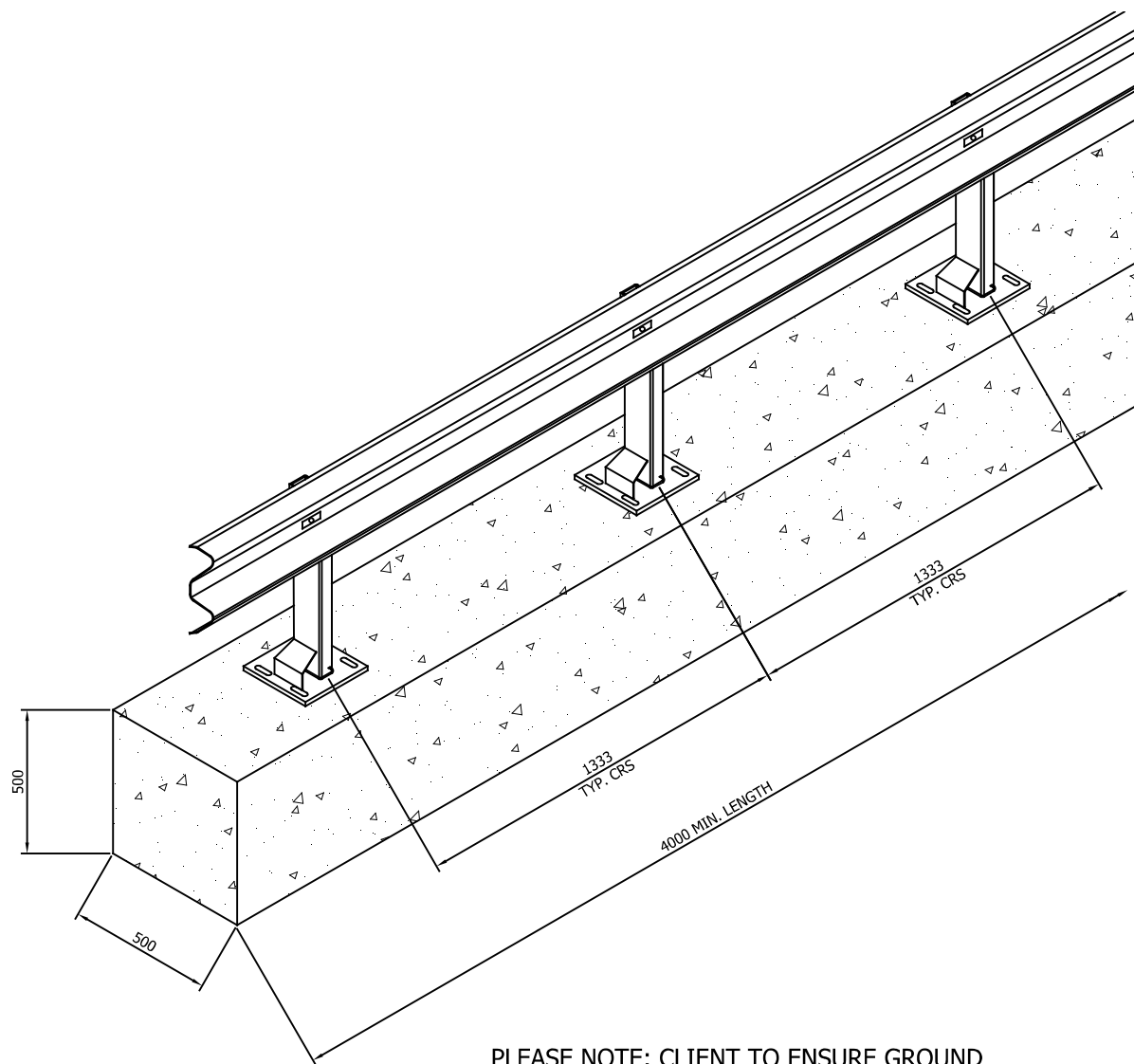
H1W2-GA-03

REVn:

04



TYPICAL SECTION THROUGH



PLEASE NOTE: CLIENT TO ENSURE GROUND
CONDITIONS ARE SUITABLE PRIOR TO INSTALLATION.
IF UNSURE PLEASE SEEK ADVICE

MINIMUM CONCRETE GRADE RC20/25 -
ST5 IS AN ACCEPTED ALTERNATIVE PRESCRIBED
CONCRETE

REVn	DATE	DETAILS	INITIAL
03	28/09/22	CONCRETE NOTE REVISED	A.D
02	31/01/17	DETAILS REVISED	L.L
1.4	20/05/15	DETAILS REVISED	M.T

**MegaRail bs
H1 W2 (VI 3)**

SAFEROAD®

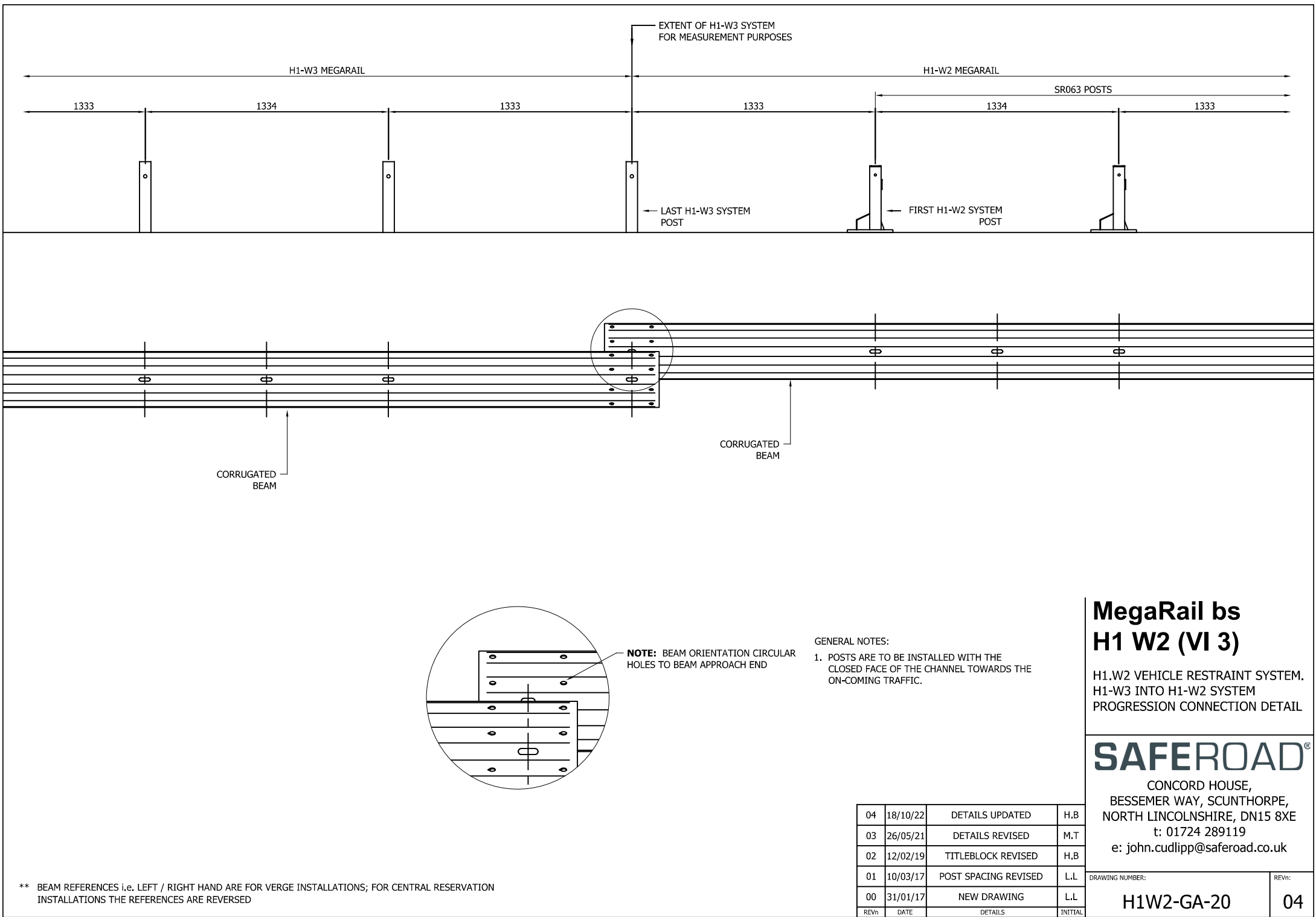
CONCORD HOUSE,
BESSEMER WAY, SCUNTHORPE,
NORTH LINCOLNSHIRE, DN15 8XE
t: 01724 289119
e: john.cudlipp@saferoad.co.uk

DRAWING NUMBER:

H1W2-GA-04

REVn:

03



** BEAM REFERENCES i.e. LEFT / RIGHT HAND ARE FOR VERGE INSTALLATIONS; FOR CENTRAL RESERVATION INSTALLATIONS THE REFERENCES ARE REVERSED

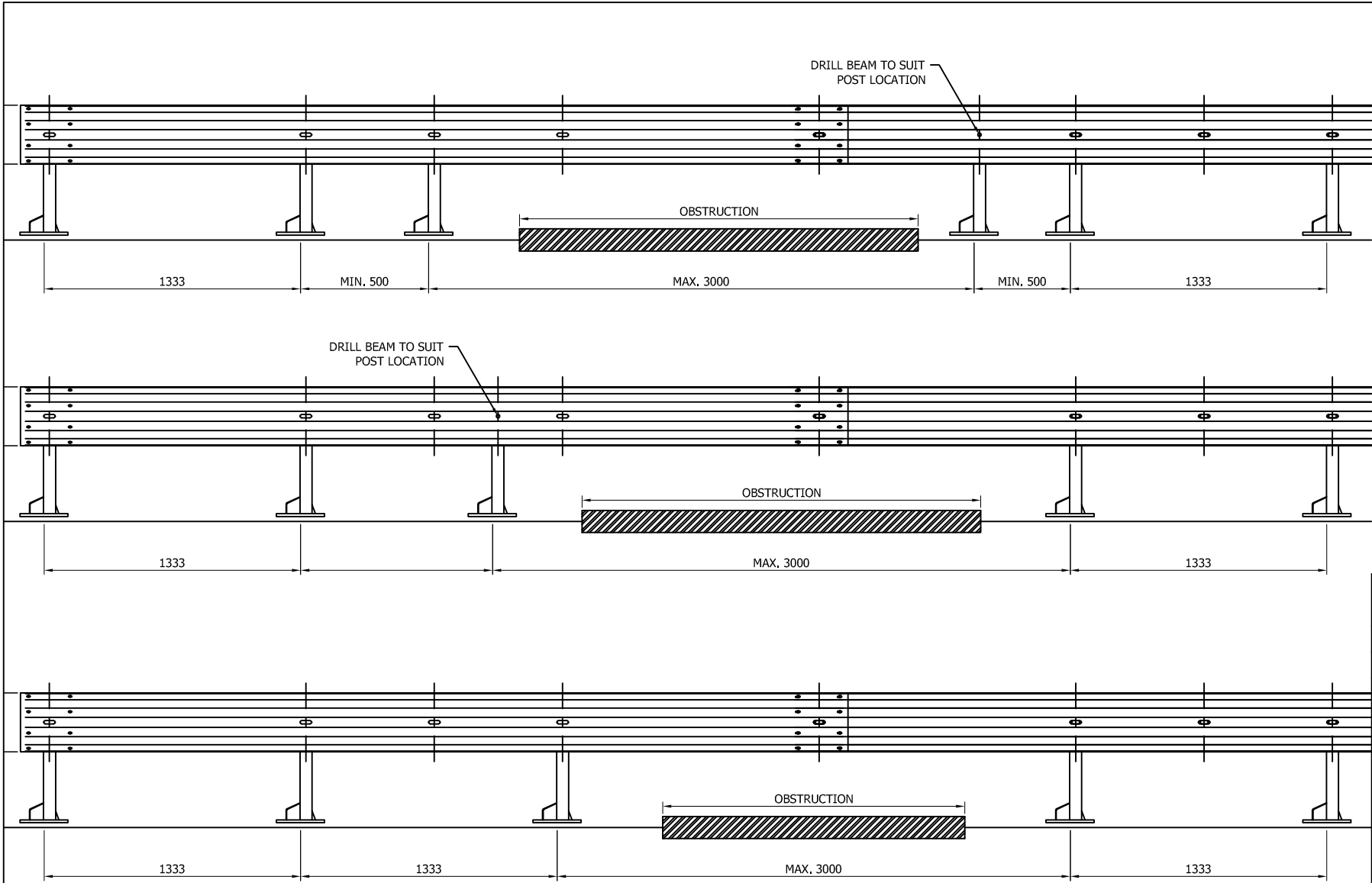
MegaRail bs H1 W2 (VI 3)

H1.W2 VEHICLE RESTRAINT SYSTEM.
H1-W3 INTO H1-W2 SYSTEM
PROGRESSION CONNECTION DETAIL

SAFEROAD®

CONCORD HOUSE,
BESSEMER WAY, SCUNTHORPE,
NORTH LINCOLNSHIRE, DN15 8XE
t: 01724 289119
e: john.cudlipp@saferoad.co.uk

DRAWING NUMBER:	REVn:
H1W2-GA-20	04



- GENERAL NOTES:
1. IF THE SITE CONDITIONS DO NOT ALLOW A POST TO BE INSTALLED ON THE SYSTEM PITCH DEVIATIONS CAN BE APPLIED. THE OBSTRUCTED POST CAN BE LEFT OUT AND EXTRA POSTS INSTALLED TO SPAN THE OBSTRUCTION. THE NEW POST SPACING MUST NOT EXCEED 3000mm AND MUST NOT BE LESS THAN 500mm. ALTHOUGH IT WOULD BE BENEFICIAL TO USE THE HOLES ALREADY IN THE BEAM IT IS ACCEPTABLE TO DRILL NEW HOLES IN THE DESIRED POSITIONS AND TREAT WITH ZINC RICH PAINT.

02	12/02/19	MINOR CHANGES AND TITLEBLOCK REVISED	H.B
01	10/03/17	NOTES REVISED	L.L
00	31/01/17	NEW DRAWING	L.L
REVn	DATE	DETAILS	INITIAL

MegaRail bs
H1 W2 (VI 3)

H1.W2 VEHICLE RESTRAINT SYSTEM
DEVIATION SETTING OUT
ARRANGEMENT

SAFEROAD®

CONCORD HOUSE,
BESSEMER WAY, SCUNTHORPE,
NORTH LINCOLNSHIRE, DN15 8XE
t: 01724 289119
e: john.cudlipp@saferoad.co.uk

DRAWING NUMBER:	REVn:
H1W2-GA-40	02