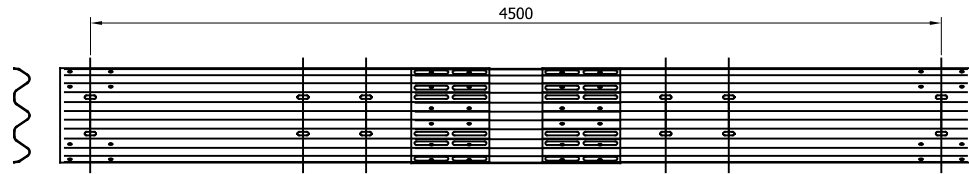
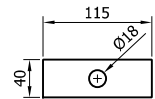


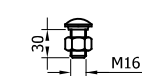
SR016 - TRIWAVE BEAM 2,4MM



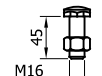
SR239 - TRI-WAVE EXPANSION ASSEMBLY 2,4MM



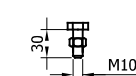
SR151 - WASHER  
PLATE 115 x 40 x  
6 DIA.18



M16x30 SETSCREW  
HRK SHOULDER c/w  
NUT - SR207



M16x45 SETSCREW  
c/w NUT - SR201



M10x30 SETSCREW  
c/w NUT - SR206



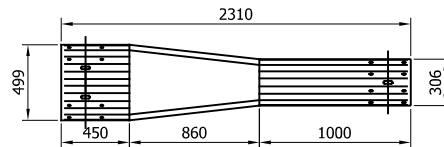
WASHER 18 $\phi$  HOLE x 38  
- SR209



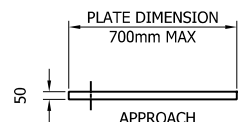
WASHER 18 $\phi$  HOLE  
- SR300



WASHER 11 $\phi$  HOLE  
- SR301

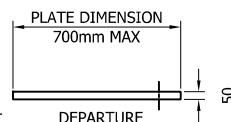


SR218 - TRI-WAVE TO A PROFILE  
CONNECTION  
(APPLICABLE TO APPROACH & DEPARTURE)



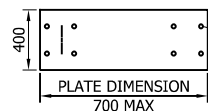
APPROACH  
OFFSET  
POST

CAN BE FIXED WITH  
CAST IN ANCHORS, DRILL  
AND FIX ANCHORS OR  
PUSHED IN ANCHORS  
AT 180x180 CENTERS



DEPARTURE  
OFFSET  
POST

\*BASEPLATE DRILL & TAPPED FOR  
LIFTING EYE



4 No. THREADED  
M20 HOLES

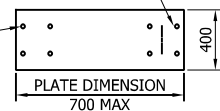
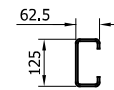
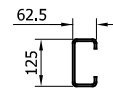


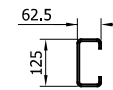
PLATE DIMENSION  
700 MAX



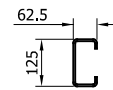
SR241 - C125 X  
2400mm



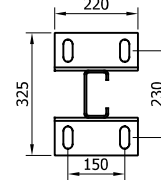
SR214 - C125 X  
1600mm



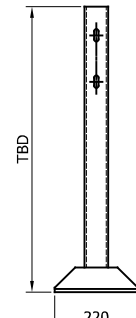
SR240 - C125 X  
1250mm



SR225 - C125 X  
2000mm

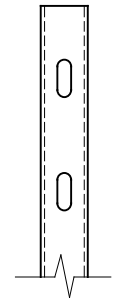
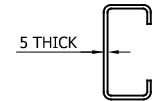


SR485 - SURFACE  
MOUNTED - C125  
POST



SR240 - C125 X  
1250mm

## POST TYPE IDENTIFICATION



REVn	DATE	DETAILS	INITIAL
02	15/07/24	DRAWING UPDATED	H.B
01	04/04/23	COMPONENT DETAILS UPDATED	H.B
00	18/03/21	DRAWING CREATED	M.T

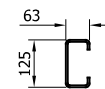
# MEGARAIL SAFESTAR 241 H2 W4 VI 4

SAFESTAR 241 COMPONENTS  
SCHEMATIC



CONCORD HOUSE,  
BESSEMER WAY, SCUNTHORPE,  
NORTH LINCOLNSHIRE, DN15 8XE  
t: 01724 289119  
FOR TECHNICAL ASSISTANCE CONTACT  
john.cudlipp@saferoad.co.uk

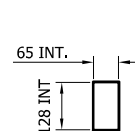
DRAWING NUMBER: MR-H2W4-GA-00 REVn: 02



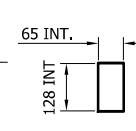
SR212 - C125  
SPACER  
X 275



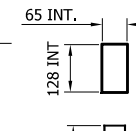
SR100 - A21  
REINFORCING  
RING



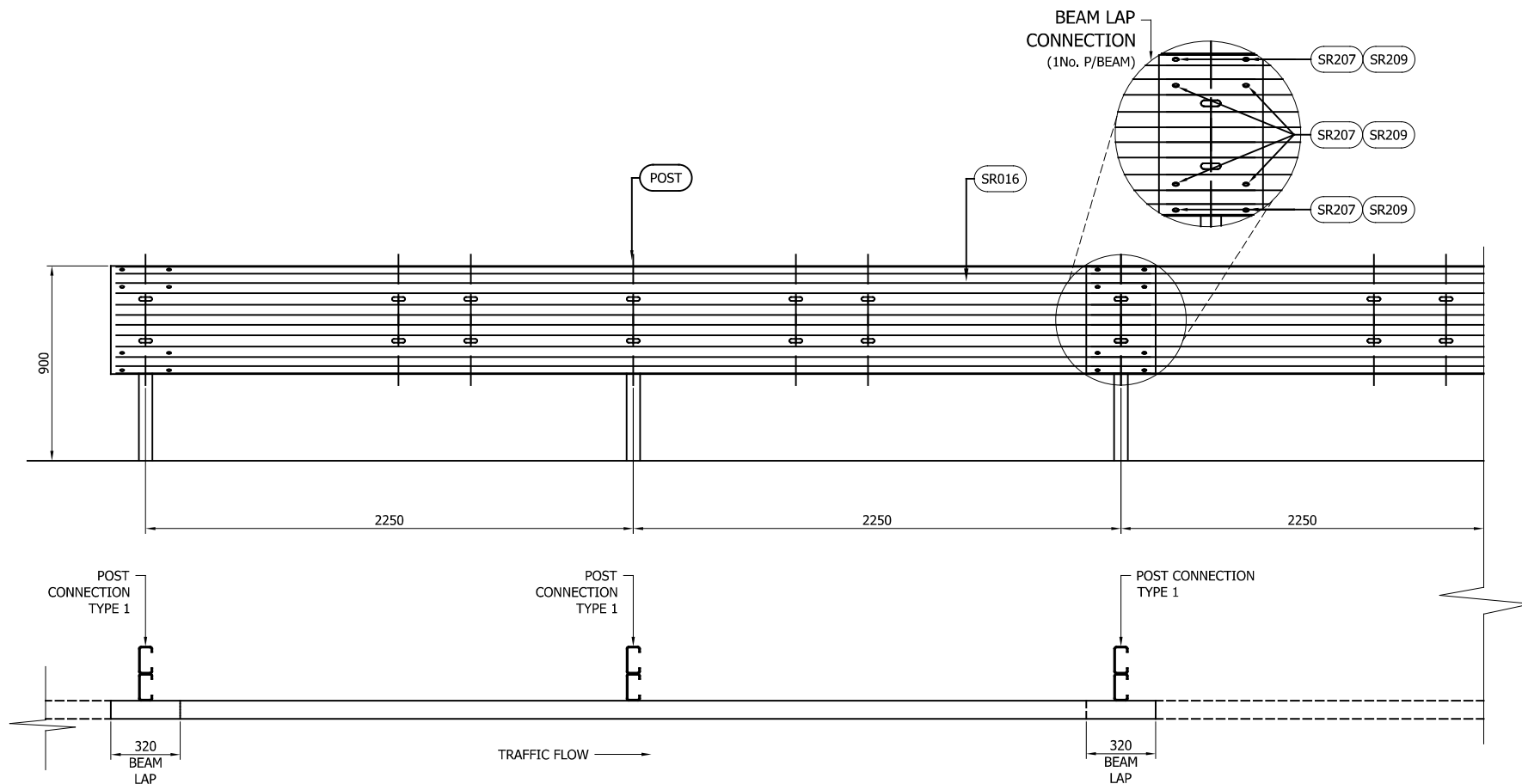
SR080 - C125  
POST SOCKET  
x 470



SR081 - C125  
POST SOCKET  
x 520



SR082 - C125  
POST SOCKET  
x 570



#### GENERAL NOTES:

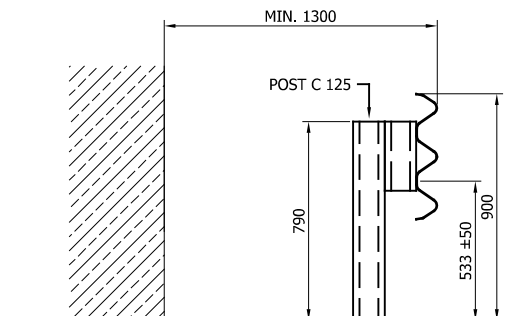
1. POSTS ARE TO BE INSTALLED WITH THE CLOSED FACE OF THE CHANNEL TOWARDS THE ON-COMING TRAFFIC.
2. FOR OPTIONS ON POST FOUNDATIONS REFER TO DRAWING NUMBER MR-GA-020
3. FOR DEVIATIONS IN SYSTEM POST PITCH REFER TO DRAWING MR-H2W4-GA-40.
4. WHEN TYING INTO ADJACENT VRS ONLY ONE WORKING WIDTH DIFFERENCE IS PERMITTED, SEE SYSTEM PROGRESSION DETAILS.
5. WHERE A KERB IS PRESENT THE MAXIMUM KERB HEIGHT IS 100mm. SHOULD THE KERB BE HIGHER THAN 100mm AND THE FENCE IS SETBACK LESS THAN 250mm FROM THE FACE OF THE KERB. THE SYSTEM HEIGHT IS MEASURED FROM THE CARRIAGEWAY. IF THE SETBACK IS MORE THAN 250mm FROM THE FACE OF KERB THE SYSTEM HEIGHT IS MEASURED FROM THE TOP OF THE KERB.
6. FOR MINIMUM LENGTH OF FULL HEIGHT VRS REFER TO SAFEROAD MEGARAIL MANUAL.

TABLE 'B' - SCHEDULE OF POST REFERENCE NUMBERS AND LENGTHS

SAFEROAD UK PART NUMBER	POST LENGTH
SR240	1250
SR214	1600
SR225	2000
SR241	2400

TABLE 'A' - SYSTEM COMPONENT SCHEDULE - QUANTITIES / 4m BEAM

SAFEROAD UK PART NUMBER	DESCRIPTION	QUANTITY
SR016	TRI-WAVE BEAM 2.4MM	1
SEE TABLE 'B'	C125 POST X 5MM THICK	2
FOR SCHEDULE OF BOLTED CONNECTIONS REFER TO DRAWING NUMBER MR-H2W4-GA-02		



## MEGARAIL SAFESTAR 241 H2 W4 VI 4

SAFESTAR 241 GENERAL  
ARRANGEMENT AND SETTING OUT  
DETAILS

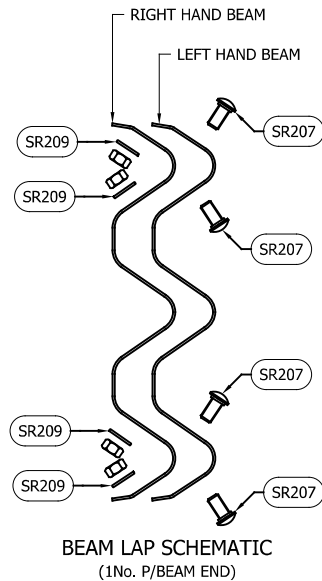


CONCORD HOUSE,  
BESSEMER WAY, SCUNTHORPE,  
NORTH LINCOLNSHIRE, DN15 8XE  
t: 01724 289119  
FOR TECHNICAL ASSISTANCE CONTACT  
john.cudlipp@saferoad.co.uk

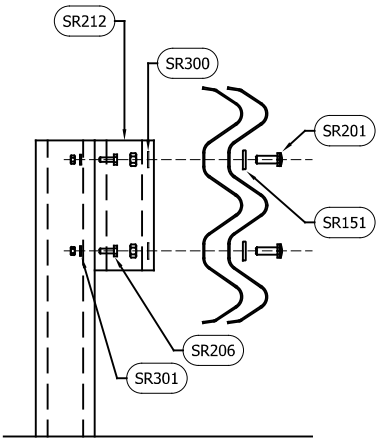
REVn	DATE	DETAILS	INITIAL
02	15/07/24	DRAWING UPDATED	H.B
01	04/04/23	MINOR DETAIL UPDATES	H.B
00	18/03/21	DRAWING CREATED	M.T

DRAWING NUMBER:	REVn:
MR-H2W4-GA-01	02

- GENERAL NOTES:
1. NUMBERS IN THE SCHEDULES SUFFIXED (+) DENOTES THE ADDITIONAL QUANTITY OF COMPONENTS REQUIRED FOR EXTREME ENDS OF INDIVIDUAL RUNS OF BARRIER.



BOLTING COMPONENT SCHEDULE - QUANTITIES P/B EAM		
SAFEROAD UK PART NUMBER	DESCRIPTION	BEAM TO BEAM CONNECTION
SR207	M16x30 SETSCREW HRK SHOULDER c/w NUT	8 (+8)
SR209	M16 WASHER 18φ HOLE x 38	8 (+8)



BOLTING COMPONENT SCHEDULE - QUANTITIES / POST		
SAFEROAD UK PART NUMBER	DESCRIPTION	TYPE 1 CONNECTION
SR201	M16x45 SETSCREW c/w NUT	2
SR151	WASHER PLATE 115 x 40 x 6 DIA. 18	2
SR300	M16 WASHER 18φ HOLE	2
SR206	M10x30 SETSCREW c/w NUT	2
SR301	M10 WASHER 11φ HOLE	2

**MEGARAIL**  
**SAFESTAR 241**  
**H2 W4 VI 4**  
SAFESTAR 241 FIXING & INSTALLATION SCHEMATIC

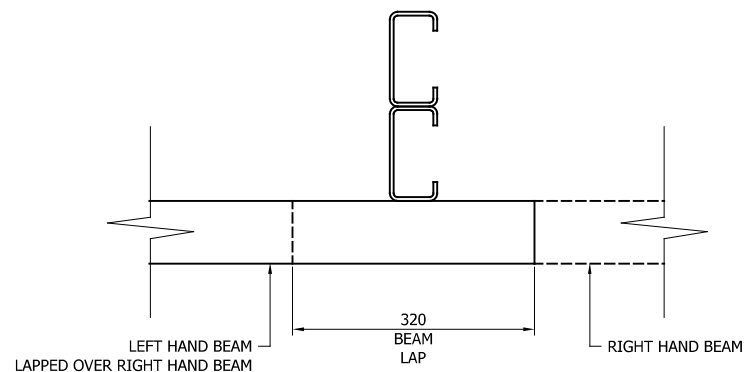
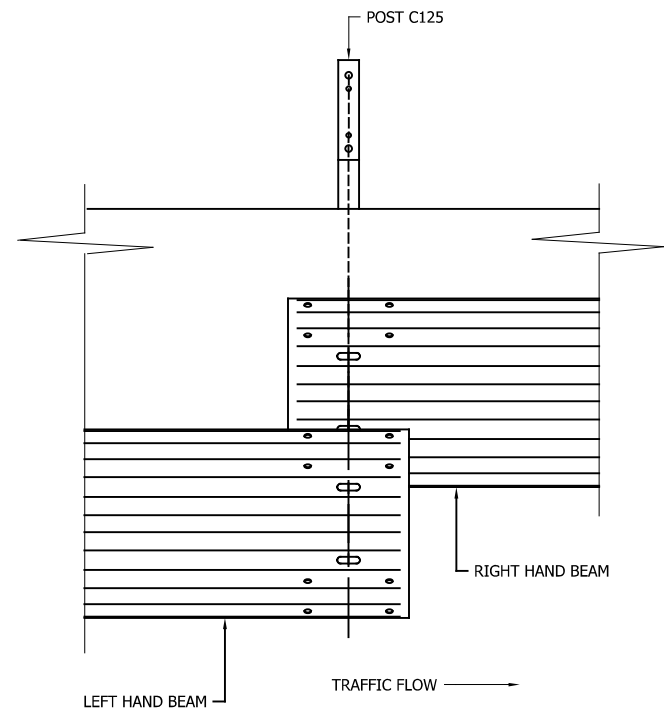


CONCORD HOUSE,  
BESSEMER WAY, SCUNTHORPE,  
NORTH LINCOLNSHIRE, DN15 8XE  
t: 01724 289119  
FOR TECHNICAL ASSISTANCE CONTACT  
john.cudlipp@saferoad.co.uk

DRAWING NUMBER:	REVn:
MR-H2W4-GA-02	02

\*\* BEAM REFERENCES i.e. LEFT / RIGHT HAND ARE FOR VERGE INSTALLATIONS; FOR CENTRAL RESERVATION INSTALLATIONS THE REFERENCES ARE REVERSED

- GENERAL NOTES:
1. POSTS ARE TO BE INSTALLED WITH THE CLOSED FACE OF THE CHANNEL TOWARDS THE ON-COMING TRAFFIC.



\*\* BEAM REFERENCES i.e. LEFT / RIGHT HAND ARE FOR VERGE INSTALLATIONS; FOR CENTRAL RESERVATION INSTALLATIONS THE REFERENCES ARE REVERSED

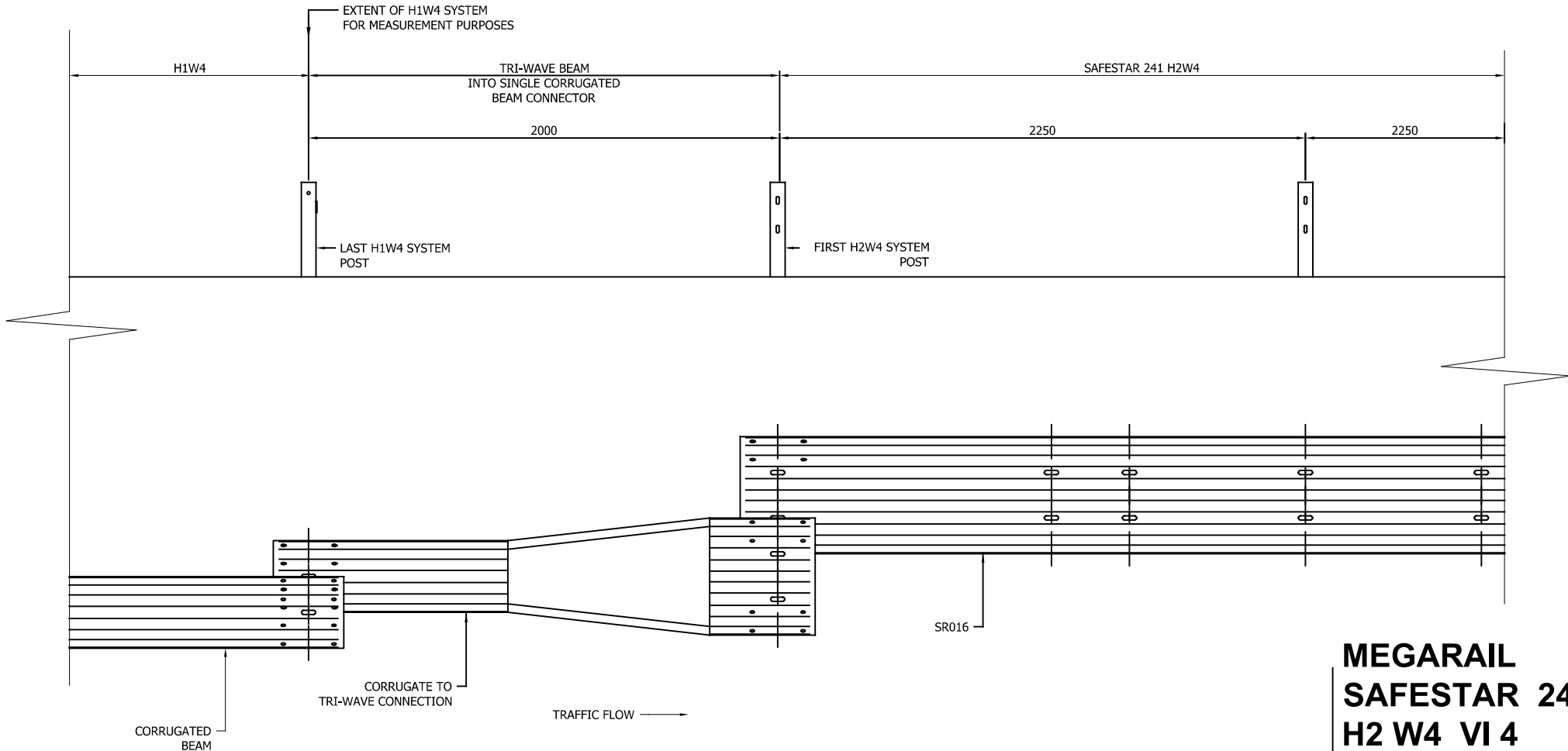
REVn	DATE	DETAILS	INITIAL
02	15/07/24	DRAWING UPDATED	H.B
01	04/04/23	MINOR DETAIL UPDATES	H.B
00	18/03/21	DRAWING CREATED	M.T

**MEGARAIL**  
**SAFESTAR 241**  
**H2 W4 VI 4**  
SAFESTAR 241 BEAM LAPPING  
DETAILS



CONCORD HOUSE,  
BESSEMER WAY, SCUNTHORPE,  
NORTH LINCOLNSHIRE, DN15 8XE  
t: 01724 289119  
FOR TECHNICAL ASSISTANCE CONTACT  
john.cudlipp@saferoad.co.uk

DRAWING NUMBER:	REVn:
MR-H2W4-GA-03	02



# MEGARAIL SAFESTAR 241 H2 W4 VI 4

SAFESTAR 241 SYSTEM  
PROGRESSION TO SINGLE  
CORRUGATED BEAM SYSTEM



CONCORD HOUSE,  
BESSEMER WAY, SCUNTHORPE,  
NORTH LINCOLNSHIRE, DN15 8XE  
t: 01724 289119  
FOR TECHNICAL ASSISTANCE CONTACT  
john.cudlipp@saferoad.co.uk

## GENERAL NOTES:

1. POSTS ARE TO BE INSTALLED WITH THE CLOSED FACE OF THE CHANNEL TOWARDS THE ON-COMING TRAFFIC.

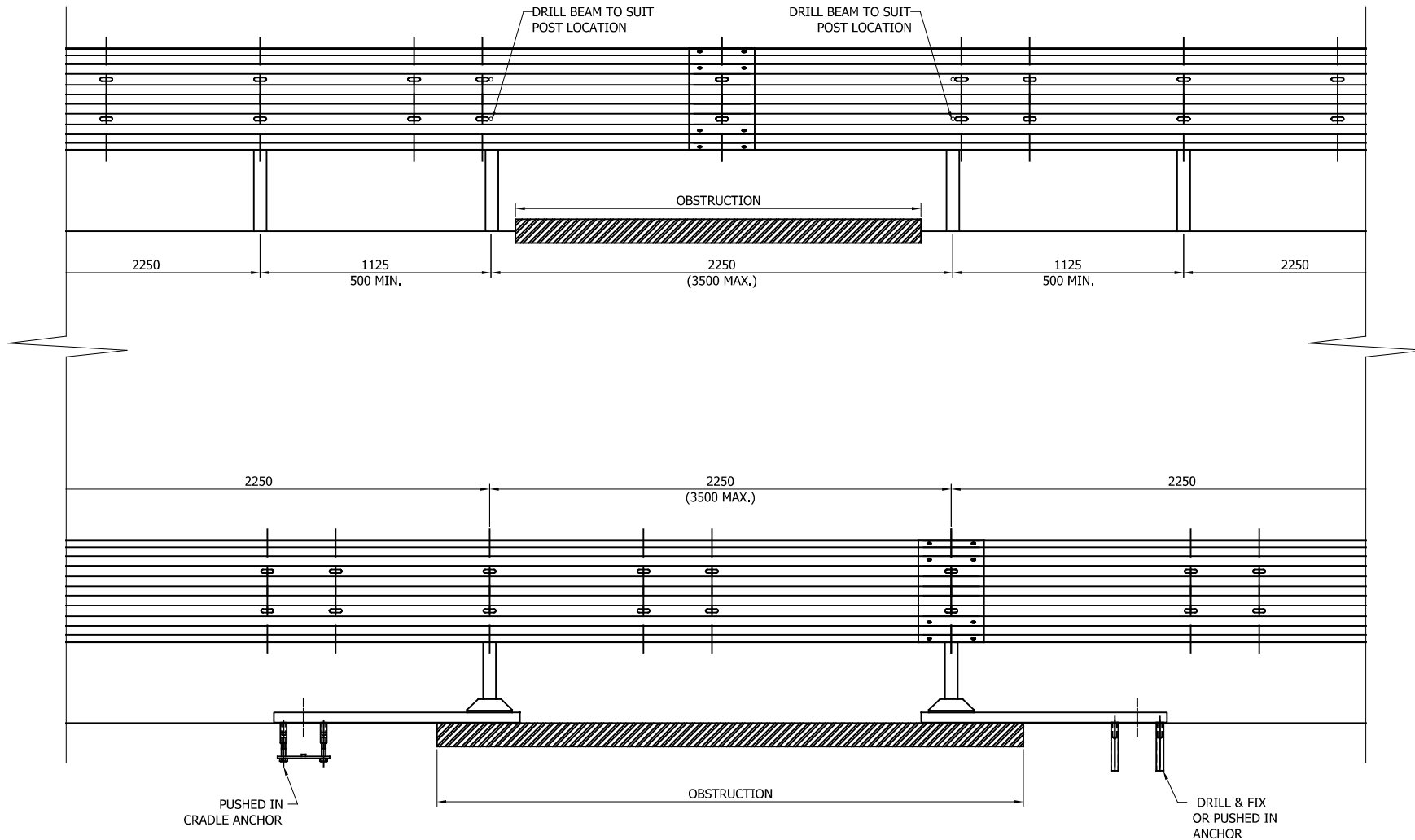
\*\* BEAM REFERENCES i.e. LEFT / RIGHT HAND ARE FOR VERGE INSTALLATIONS; FOR CENTRAL RESERVATION INSTALLATIONS THE REFERENCES ARE REVERSED

02	15/07/24	DRAWING UPDATED	H.B
01	04/04/23	POST CENTRES CORRECTED	H.B
00	18/03/21	DRAWING CREATED	M.T
REVn	DATE	DETAILS	INITIAL

DRAWING NUMBER:	REVn:
MR-H2W4-GA-20	02

GENERAL NOTES:

1. IF THE SITE CONDITIONS DO NOT ALLOW A POST TO BE INSTALLED ON THE SYSTEM PITCH DEVIATIONS CAN BE APPLIED. THE OBSTRUCTED POST CAN BE LEFT OUT AND EXTRA POSTS INSTALLED TO SPAN THE OBSTRUCTION AS PER THIS DRAWING. ALTHOUGH IT WOULD BE BENEFICIAL TO USE THE HOLES ALREADY IN THE BEAM IT IS ACCEPTABLE TO DRILL NEW HOLES IN THE DESIRED POSITIONS AND TREAT WITH ZINC RICH PAINT.
2. OFFSET POSTS SHOWN ON DRAWING MR-H2W4-GA-00 CAN BE USED.



REVn	DATE	DETAILS	INITIAL
02	15/07/24	DRAWING UPDATED	H,B
01	04/04/23	POST CENTRES CORRECTED	H,B
00	18/03/21	DRAWING CREATED	M,T

## MEGARAIL SAFESTAR 241 H2 W4 VI 4

SAFESTAR 241 PERMISSIBLE  
DEVIATION SETTING OUT DETAILS



CONCORD HOUSE,  
BESSEMER WAY, SCUNTHORPE,  
NORTH LINCOLNSHIRE, DN15 8XE  
t: 01724 289119  
FOR TECHNICAL ASSISTANCE CONTACT  
john.cudlipp@saferoad.co.uk

DRAWING NUMBER:	REVn:
MR-H2W4-GA-40	02