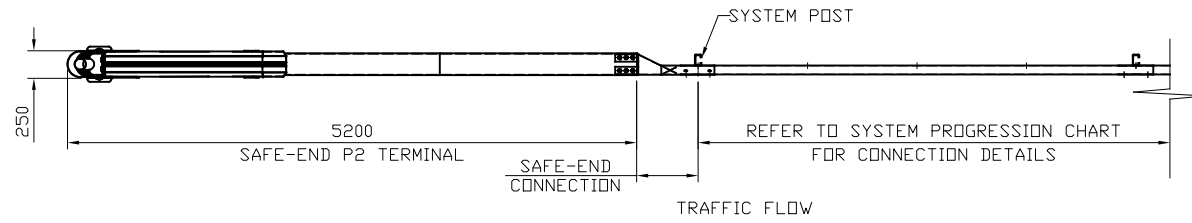
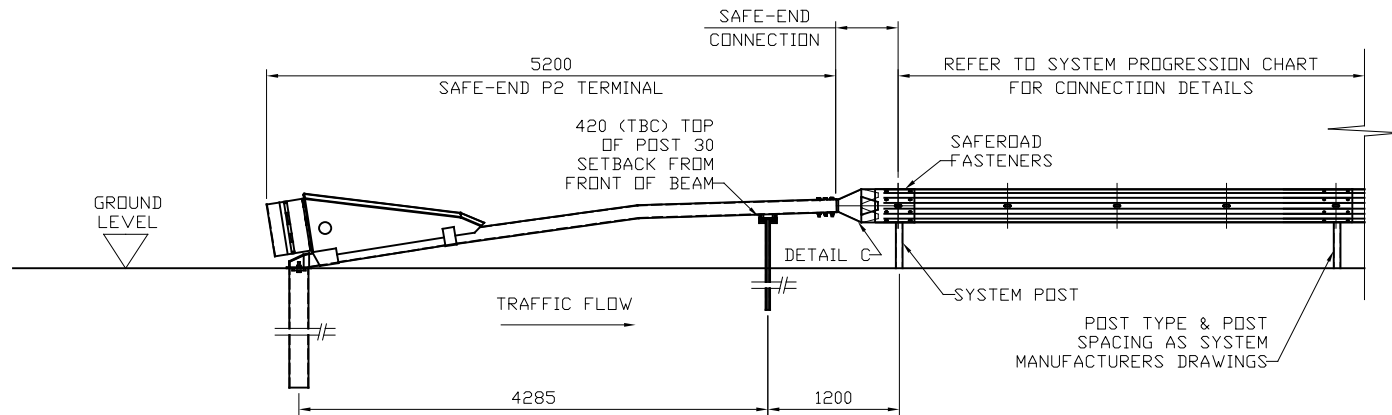


# GENERAL NOTES:

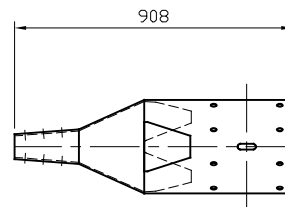
1. ALL DIMENSIONS IN MILLIMETRES  
UNLESS NOTED OTHERWISE.
2. FOR INSTALLATION PROCEDURES  
REFER TO SAFEROAD MANUAL.



**PLAN VIEW**



**ELEVATION ON TRAFFIC  
CONNECTION TO N2 VRS SYSTEM**



**DETAIL 'C'  
SAFE-END CONNECTOR**

REVn	DATE	DETAILS	INITIAL
03	10.10.24	SUPPORT POST POSITION CHANGE	H.B
02	13.03.23	GENERAL DRAWING UPDATE	H.B
01	23.09.21	DETAIL B REMOVED AND NOTE ADDED	A.D
00	12.04.21	DRAWING CREATED	M.T

## Safe-End P2

TO EN 1317 TESTED VRS  
SYSTEMS  
GENERAL ARRANGMENT &  
DETAIL

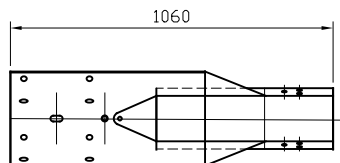
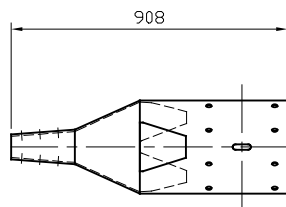
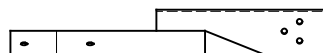
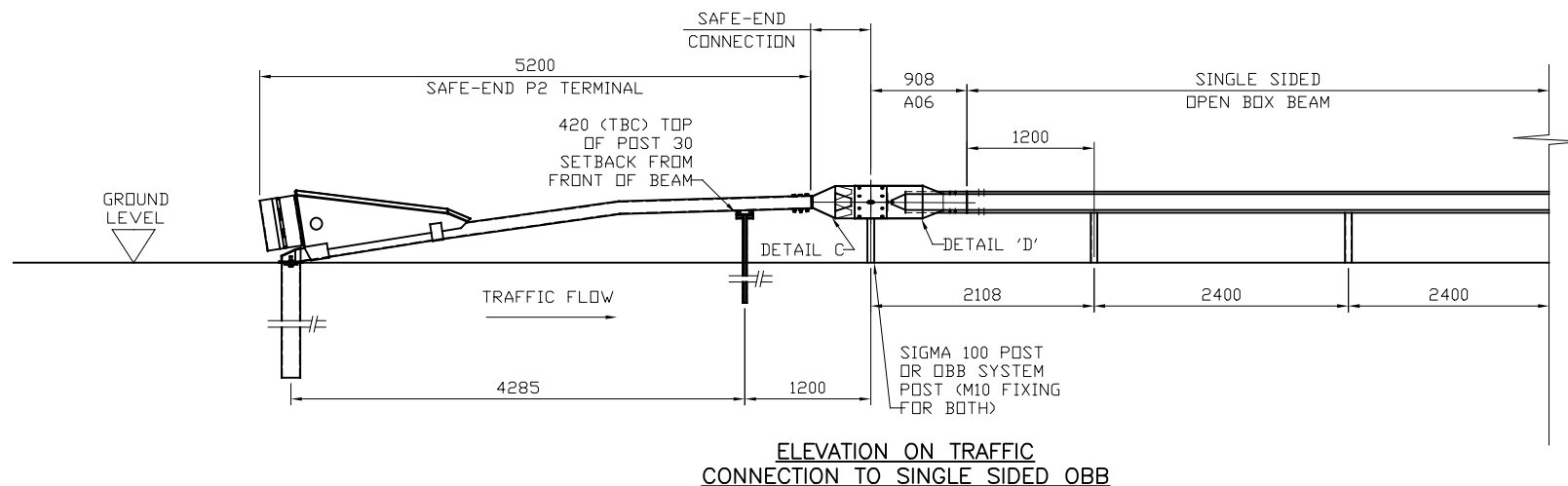
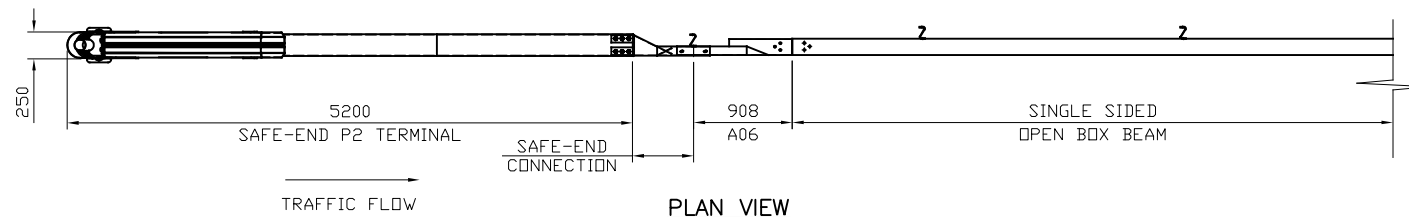


CONCORD HOUSE,  
BESSEMER WAY, SCUNTHORPE,  
NORTH LINCOLNSHIRE, DN15 8XE  
t: 01724 289119  
FOR TECHNICAL ASSISTANCE CONTACT  
e: john.cudlipp@saferoad.co.uk

DRAWING NUMBER:	REVn
P2-GA-01	03

GENERAL NOTES:

1. ALL DIMENSIONS IN MILLIMETRES UNLESS NOTED OTHERWISE.
2. FOR INSTALLATION PROCEDURES REFER TO SAFEROAD MANUAL.



DETAIL 'C'  
SAFE-END CONNECTOR

DETAIL 'D'  
ITEM A06 DETAIL

01	10.10.24	SUPPORT POST POSITION CHANGE	H.B
00	30.03.23	DRAWING CREATED	H.B
REVn	DATE	DETAILS	INITIAL

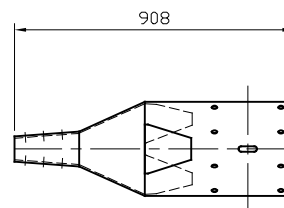
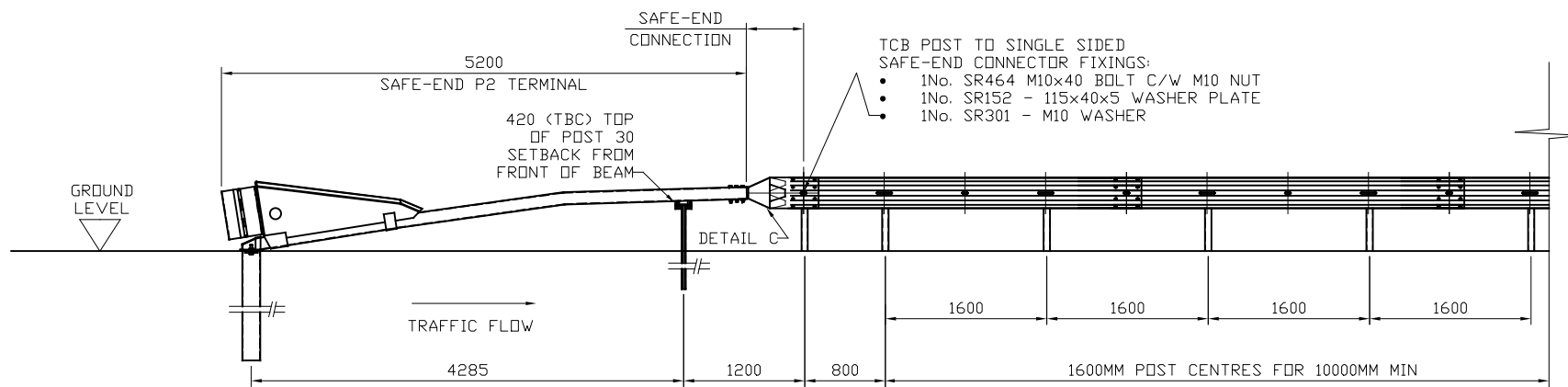
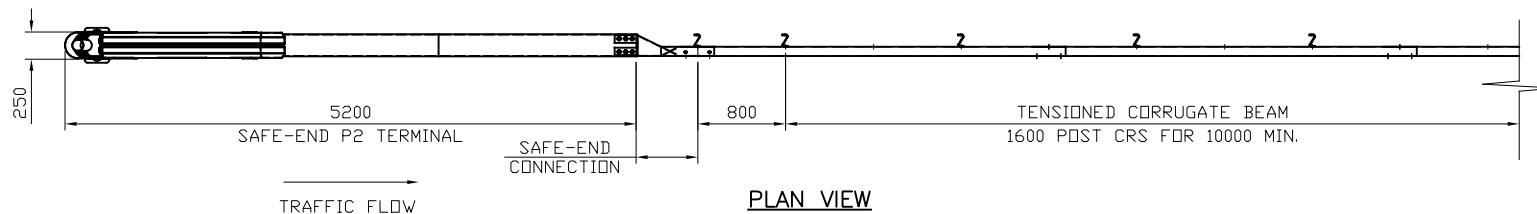
## Safe-End P2

TO SINGLE SIDED OPEN BOX  
BEAM (OBB)  
GENERAL ARRANGEMENT  
& DETAIL



CONCORD HOUSE,  
BESSEMER WAY, SCUNTHORPE,  
NORTH LINCOLNSHIRE, DN15 8XE  
t: 01724 289119  
FOR TECHNICAL ASSISTANCE CONTACT  
e: john.cudlipp@saferoad.co.uk

DRAWING NUMBER:	REVn
P2-GA-02	01



SEE DETAIL 'C'  
SAFE-END CONNECTOR

**GENERAL NOTES:**

1. ALL DIMENSIONS IN MILLIMETRES UNLESS NOTED OTHERWISE.
2. FOR INSTALLATION PROCEDURES REFER TO SAFEROAD MANUAL.

REVn	DATE	DETAILS	INITIAL
03	28.05.25	DRAWING UPDATED	H.B
02	10.10.24	SUPPORT POST POSITION CHANGE	H.B
01	30.01.24	DETAILS REVISED	H.B
00	30.03.23	DRAWING CREATED	H.B

## Safe-End P2

TO SINGLE SIDED TENSIONED CORRUGATE BEAM (TCB)  
GENERAL ARRANGEMENT  
& DETAIL

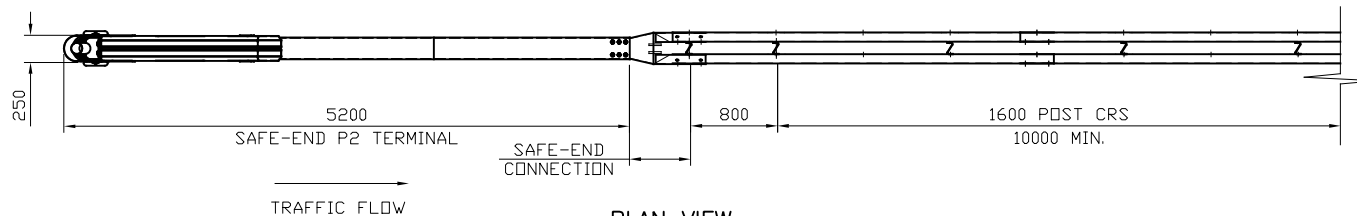


CONCORD HOUSE,  
BESSEMER WAY, SCUNTHORPE,  
NORTH LINCOLNSHIRE, DN15 8XE  
t: 01724 289119  
FOR TECHNICAL ASSISTANCE CONTACT  
e: john.cudlipp@saferoad.co.uk

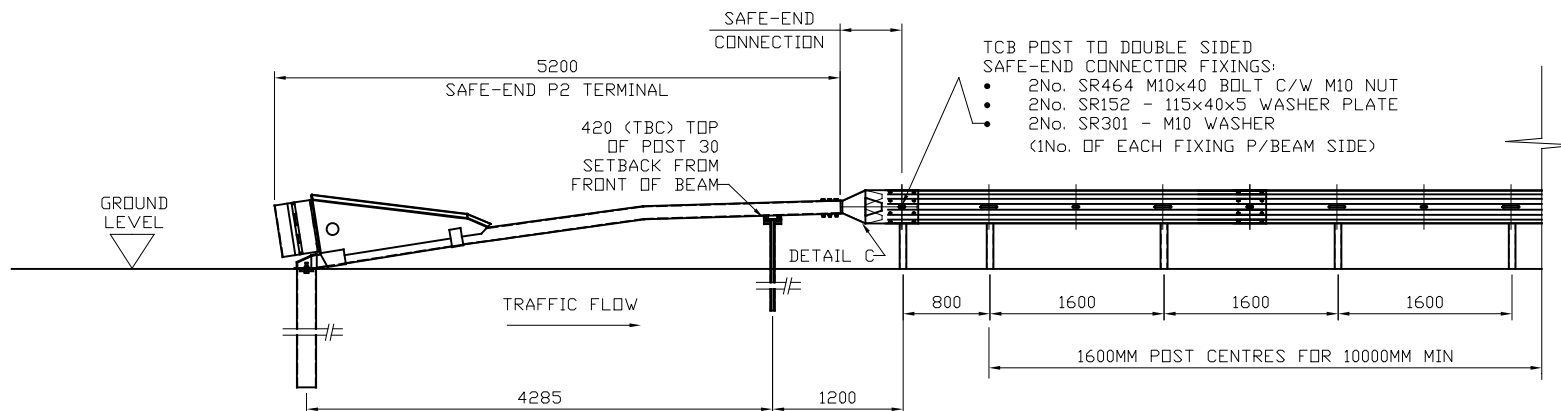
DRAWING NUMBER:	REVn
P2-GA-04	03

# GENERAL NOTES:

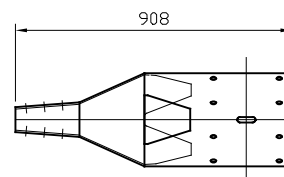
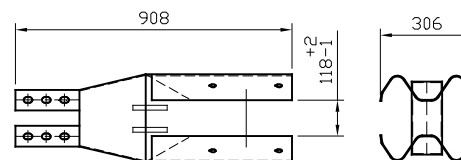
1. ALL DIMENSIONS IN MILLIMETRES UNLESS NOTED OTHERWISE.
2. FOR INSTALLATION PROCEDURES REFER TO SAFEROAD MANUAL.



PLAN VIEW



ELEVATION ON TRAFFIC  
CONNECTION TO DOUBLE SIDED TCB



DOUBLE SIDED TCB  
CONNECTION PIECE DETAIL

04	28.05.25	DRAWING UPDATED	H.B
03	19.02.25	CONNECTOR UPDATED	H.B
02	10.10.24	SUPPORT POST POSITION CHANGE	H.B
01	30.01.24	DETAILS REVISED	H.B
00	30.03.23	DRAWING CREATED	H.B
REVn	DATE	DETAILS	INITIAL

## Safe-End P2

TO DOUBLE SIDED TENSIONED  
CORRUGATE BEAM (TCB)  
GENERAL ARRANGEMENT  
& DETAIL

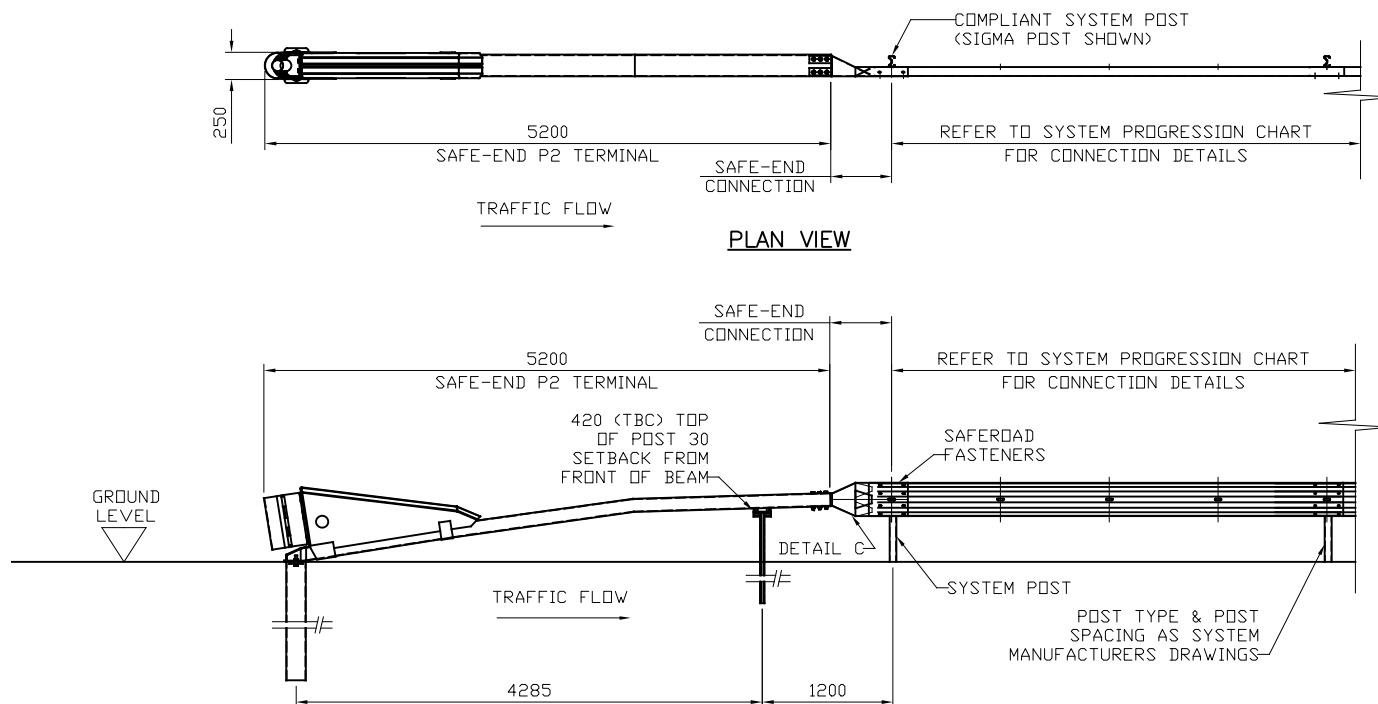


CONCORD HOUSE,  
BESSEMER WAY, SCUNTHORPE,  
NORTH LINCOLNSHIRE, DN15 8XE  
t: 01724 289119  
FOR TECHNICAL ASSISTANCE CONTACT  
e: john.cudlipp@saferoad.co.uk

DRAWING NUMBER:	REVn:
P2-GA-05	04

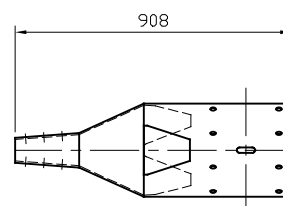
# GENERAL NOTES:

1. ALL DIMENSIONS IN MILLIMETRES UNLESS NOTED OTHERWISE.
2. FOR INSTALLATION PROCEDURES REFER TO SAFEROAD MANUAL.
3. SEE SYSTEM PROGRESSION CHART FOR CONNECTION DETAILS.



ELEVATION ON TRAFFIC  
CONNECTION TO MEGARAIL

**WHERE CHEVRON DECAL AFFIXED,  
CHEVRONS SHOULD BE POINTED  
DOWNWARDS TOWARDS THE ROAD**



DETAIL 'C'  
SAFE-END CONNECTOR

REVn	DATE	DETAILS	INITIAL
01	10.10.24	SUPPORT POST POSITION CHANGE	H.B
00	30.03.23	DRAWING CREATED	H.B

## Safe-End P2

TO MEGARAIL  
GENERAL ARRANGEMENT  
& DETAIL



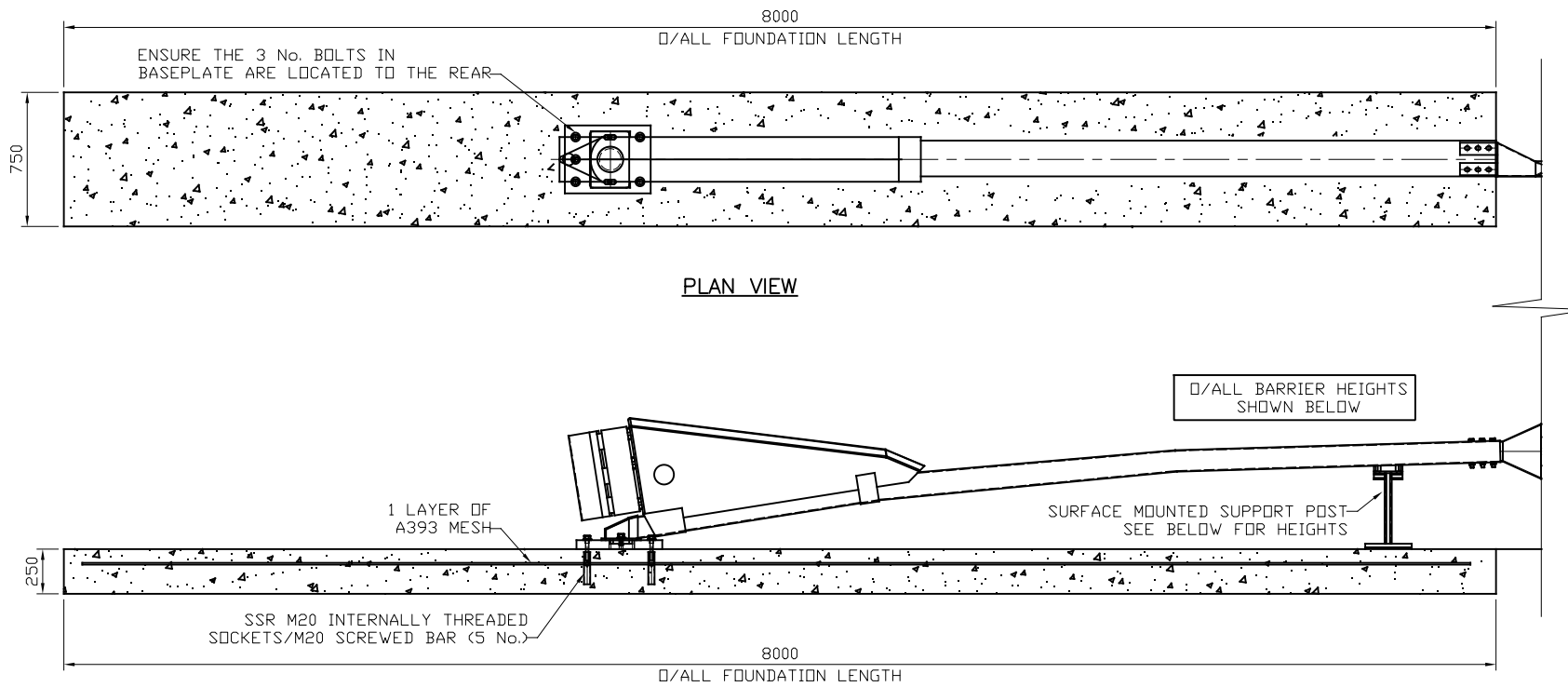
CONCORD HOUSE,  
BESSEMER WAY, SCUNTHORPE,  
NORTH LINCOLNSHIRE, DN15 8XE  
t: 01724 289119  
FOR TECHNICAL ASSISTANCE CONTACT  
e: john.cudlipp@saferoad.co.uk

DRAWING NUMBER:

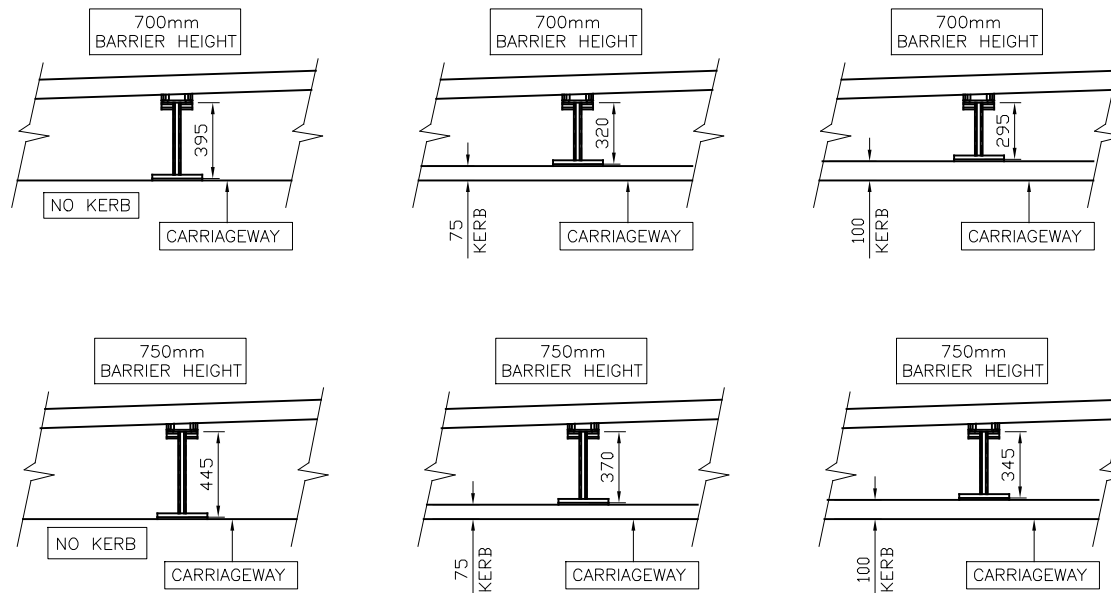
P2-GA-06

REVn

01



**ELEVATION ON SURFACE MOUNTED SAFE-END P2  
FOUNDATION DETAIL**



ALL POSTS TO BE GROUTED  
BETWEEN 10-30MM. POST HEIGHTS  
BELOW SHOWN WITH 10MM  
GROUT BED

**SURFACE MOUNTED SUPPORT POST  
HEIGHTS BASED ON CONNECTING TO  
700mm BARRIER HEIGHT**

**TEST LOAD FOR  
GROUND ANCHORAGES:-80kN**

**SURFACE MOUNTED SUPPORT POST  
HEIGHTS BASED ON CONNECTING TO  
750mm BARRIER HEIGHT**

**GENERAL NOTES:**

1. ALL DIMENSIONS IN MILLIMETRES UNLESS NOTED OTHERWISE.
2. FOR INSTALLATION PROCEDURES REFER TO SAFEROAD MANUAL.
3. THIS FOUNDATION DETAIL IS APPLICABLE TO THE SURFACE MOUNTED ARRANGEMENT OF SAFE-END P2.
4. FOUNDATION SIZE: 750mm WIDE x 250mm DEEP x 8000mm LONG.
5. WHEN POSITIONING THE SURFACE MOUNTED BASEPLATE ENSURE THE 3No. ANCHOR BOLT HOLES ARE POSITIONED TO THE REAR OF THE SAFE-END AS SHOWN.

REVn	DATE	DETAILS	INITIAL
03	16.05.25	DRAWING UPDATED	H.B
02	30.10.24	DRAWING UPDATED	H.B
01	14.11.23	NOTE ADDED	H.B
00	30.03.23	DRAWING CREATED	H.B

## Safe-End P2

FOUNDATION DETAIL FOR  
SURFACE MOUNTED SAFE-  
END P2



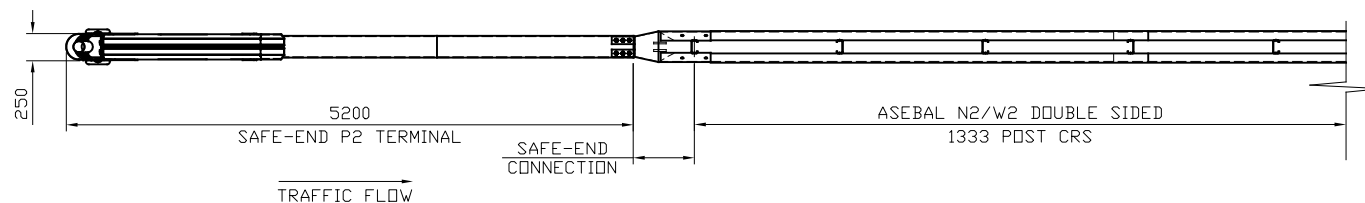
CONCORD HOUSE,  
BESSEMER WAY, SCUNTHORPE,  
NORTH LINCOLNSHIRE, DN15 8XE  
t: 01724 289119  
FOR TECHNICAL ASSISTANCE CONTACT  
e: john.cudlipp@saferoad.co.uk

DRAWING NUMBER:	REVn
P2-GA-07	03

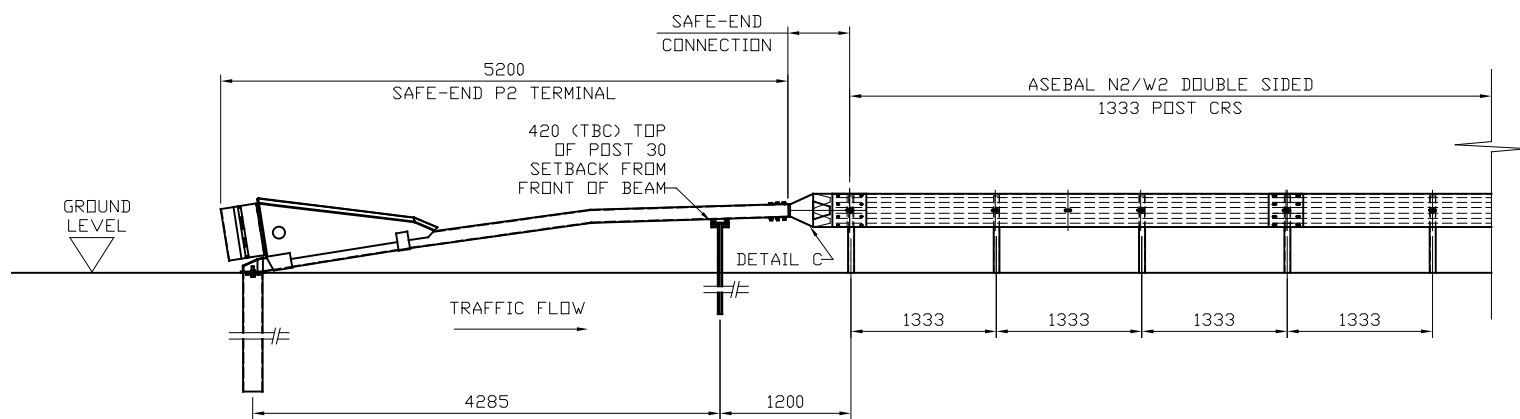
GENERAL NOTES:

1. ALL DIMENSIONS IN MILLIMETRES UNLESS NOTED OTHERWISE.

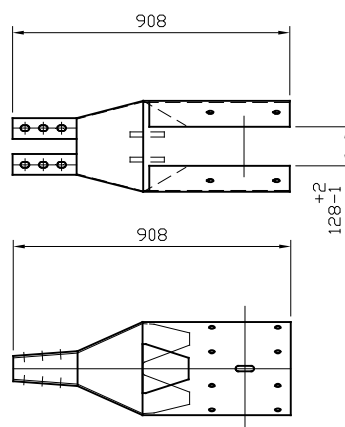
2. FOR INSTALLATION PROCEDURES REFER TO SAFEROAD MANUAL.



PLAN VIEW



ELEVATION ON TRAFFIC  
CONNECTION TO ASEBAL N2/W2 DOUBLE SIDED SYSTEM



DETAIL 'C'  
DOUBLE SIDED ASEBAL CONNECTOR

REVn	DATE	DETAILS	INITIAL
02	19.02.25	CONNECTOR UPDATED	H.B
01	10.10.24	SUPPORT POST POSITION CHANGE	H.B
00	30.03.23	DRAWING CREATED	H.B

## Safe-End P2

TO ASEBAL N2/W2 DOUBLE  
SIDED  
GENERAL ARRANGEMENT  
& DETAIL



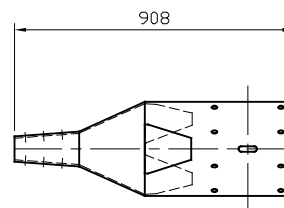
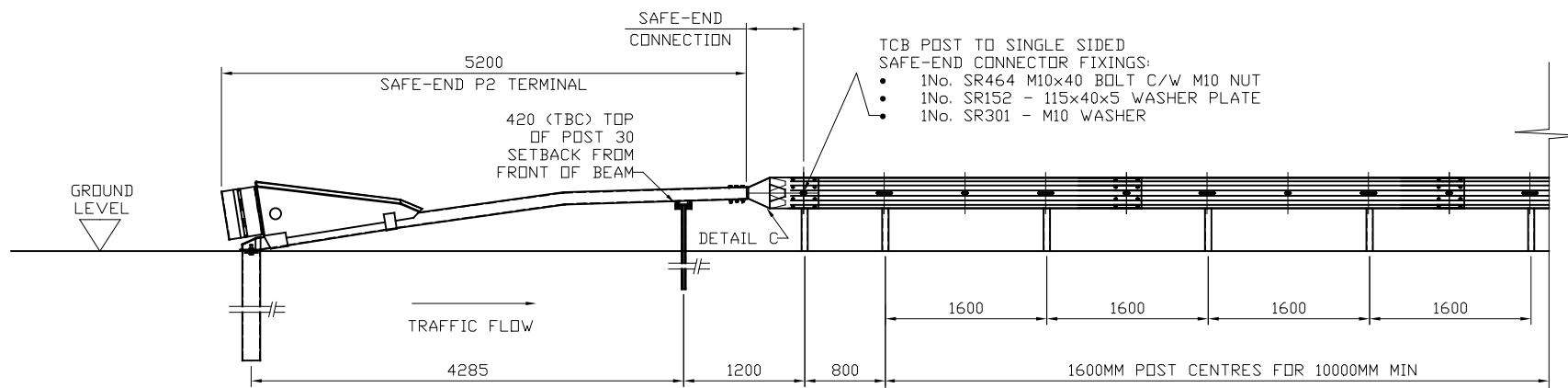
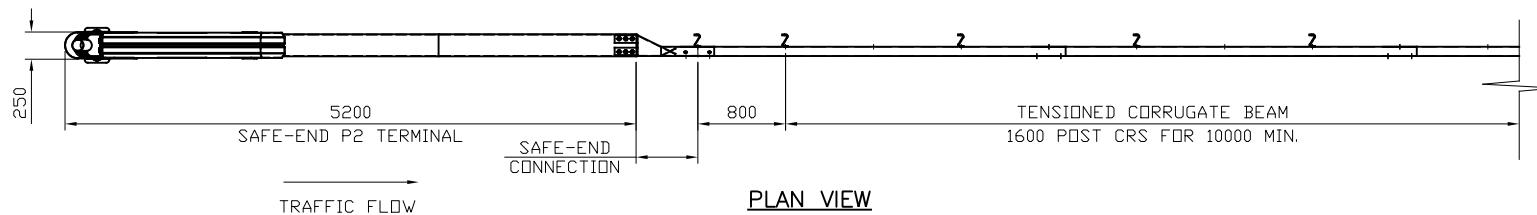
CONCORD HOUSE,  
BESSEMER WAY, SCUNTHORPE,  
NORTH LINCOLNSHIRE, DN15 8XE  
t: 01724 289119  
FOR TECHNICAL ASSISTANCE CONTACT  
e: john.cudlipp@saferoad.co.uk

DRAWING NUMBER:

P2-GA-08

REVn

02



SEE DETAIL 'C'  
SAFE-END CONNECTOR

**GENERAL NOTES:**

1. ALL DIMENSIONS IN MILLIMETRES UNLESS NOTED OTHERWISE.
2. FOR INSTALLATION PROCEDURES REFER TO SAFEROAD MANUAL.

REVn	DATE	DETAILS	INITIAL
03	28.05.25	DRAWING UPDATED	H.B
02	10.10.24	SUPPORT POST POSITION CHANGE	H.B
01	30.01.24	DETAILS REVISED	H.B
00	30.03.23	DRAWING CREATED	H.B

## Safe-End P2

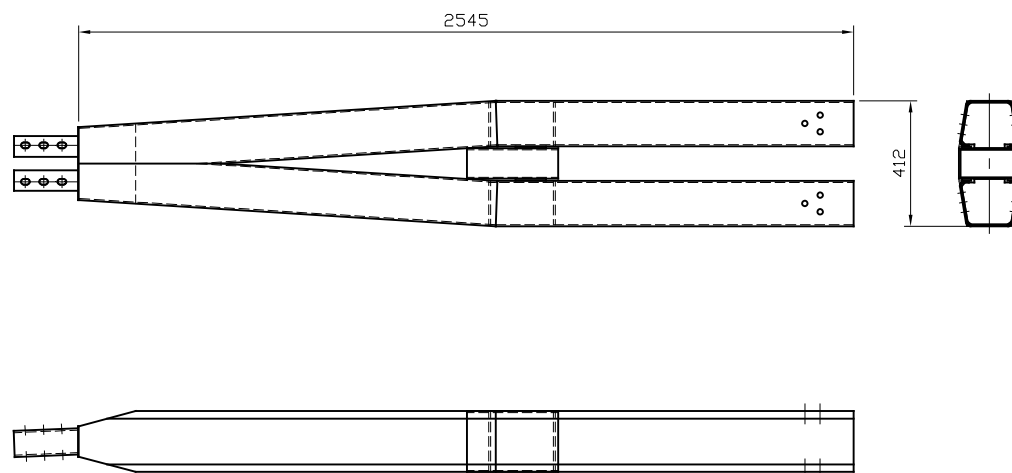
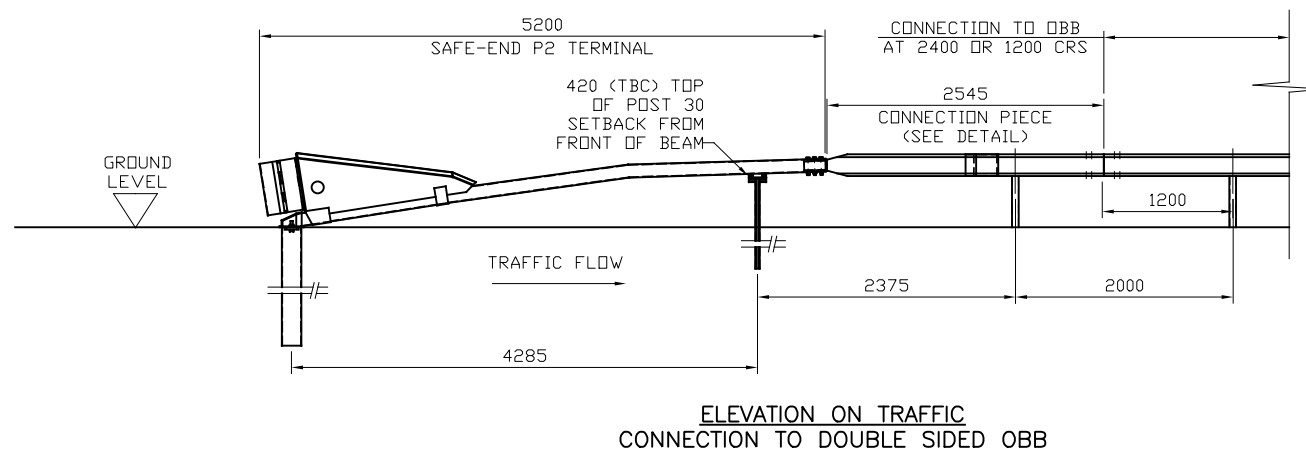
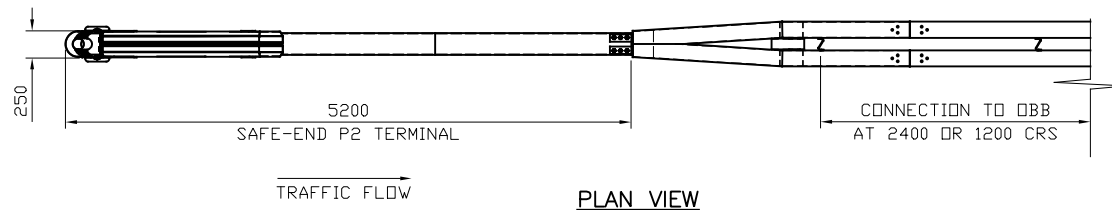
TO SINGLE SIDED TENSIONED CORRUGATE BEAM (TCB)  
GENERAL ARRANGEMENT  
& DETAIL



CONCORD HOUSE,  
BESSEMER WAY, SCUNTHORPE,  
NORTH LINCOLNSHIRE, DN15 8XE  
t: 01724 289119  
FOR TECHNICAL ASSISTANCE CONTACT  
e: john.cudlipp@saferoad.co.uk

DRAWING NUMBER:	REVn
P2-GA-04	03





- GENERAL NOTES:**
1. ALL DIMENSIONS IN MILLIMETRES UNLESS NOTED OTHERWISE.
  2. FOR INSTALLATION PROCEDURES REFER TO SAFEROAD MANUAL.

REVn	DATE	DETAILS	INITIAL
02	19.02.25	DIMENSION UPDATED	H.B
01	10.10.24	SUPPORT POST POSITION CHANGE	H.B
00	31.03.23	DRAWING CREATED	H.B

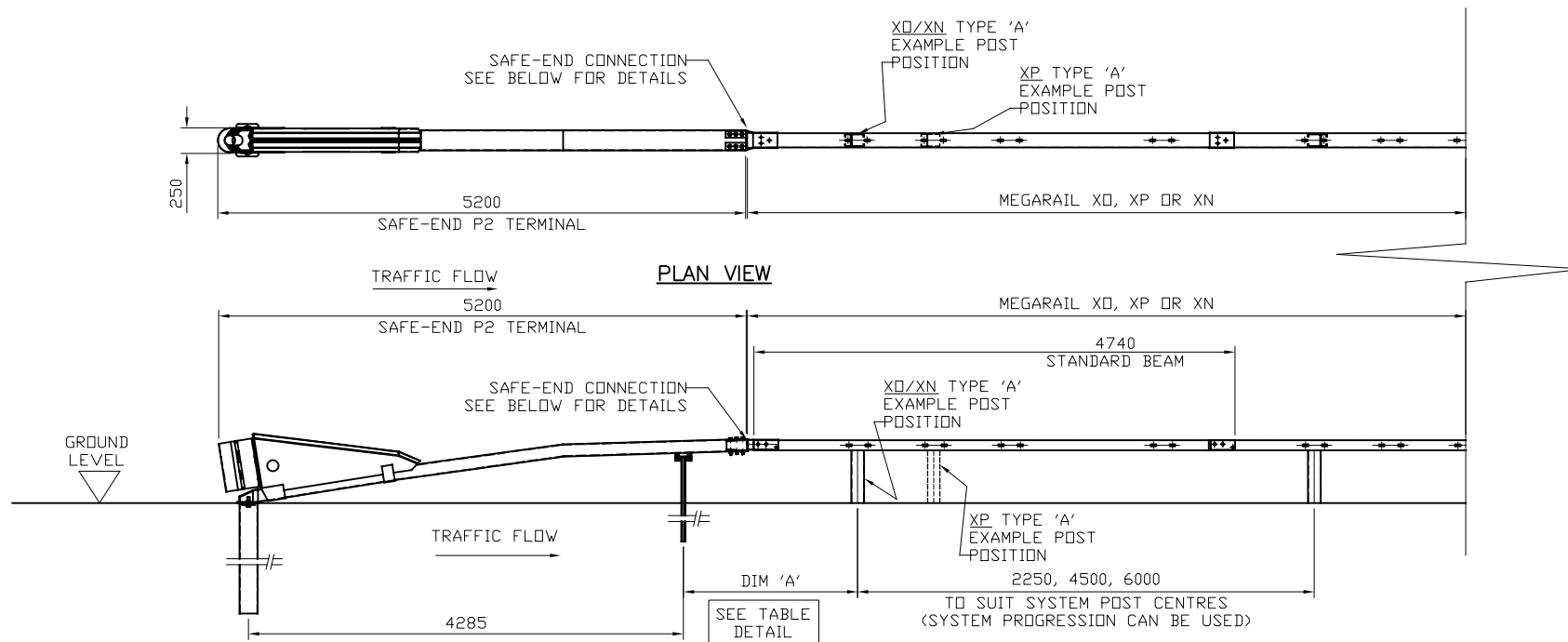
## Safe-End P2

TO DOUBLE SIDED OPEN BOX  
BEAM (OBB)  
GENERAL ARRANGEMENT  
& DETAIL



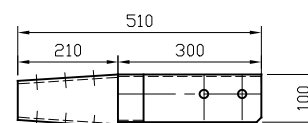
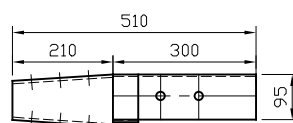
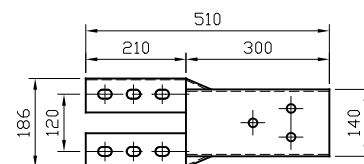
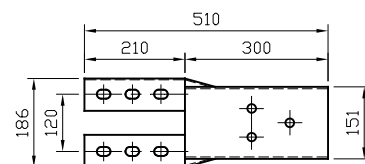
CONCORD HOUSE,  
BESSEMER WAY, SCUNTHORPE,  
NORTH LINCOLNSHIRE, DN15 8XE  
t: 01724 289119  
e: john.cudlipp@saferoad.co.uk

DRAWING NUMBER:	REVn:
P2-GA-09	02



MEGARAIL XO & XN ONLY	
CONNECTOR TYPE	DIM 'A'
TYPE 'A'	1720
TYPE 'B'	1400

MEGARAIL XP ONLY	
CONNECTOR TYPE	DIM 'A'
TYPE 'A'	2470
TYPE 'B'	1400



**TYPE 'A' CONNECTION DETAIL**

**TYPE 'B' CONNECTION DETAIL**

**GENERAL NOTES:**

1. ALL DIMENSIONS IN MILLIMETRES UNLESS NOTED OTHERWISE.
2. FOR INSTALLATION PROCEDURES REFER TO SAFEROAD MANUAL
3. FOR DETAILS OF MEGARAIL XO, XP & XN, SEE RELEVANT GA DRAWINGS WITHIN MEGARAIL MANUAL
4. DIMENSION BETWEEN P2 SUPPORT POST & FIRST 'X' SYSTEM POST VARIES DEPEDANT ON CONNECTOR TYPE (DUE TO RAIL ORIENTATION). SEE TABLE FOR FURTHER DETAILS

03	16.05.25	DRAWING UPDATED	H.B
02	10.10.24	DRAWING UPDATED	H.B
01	20.05.24	DRAWING UPDATED	H.B
00	28.03.24	DRAWING CREATED	H.B
REVn	DATE	DETAILS	INITIAL

## Safe-End P2

TO MEGARAIL XO, XP OR XN  
GENERAL ARRANGEMENT &  
DETAIL



CONCORD HOUSE,  
BESSEMER WAY, SCUNTHORPE,  
NORTH LINCOLNSHIRE, DN15 8XE  
t: 01724 289119  
FOR TECHNICAL ASSISTANCE CONTACT  
e: john.cudlipp@saferoad.co.uk

DRAWING NUMBER:	REVn:
P2-GA-10	03