

Installation and Maintenance Manual for Steel Step Corridor and Steel Step Barrier Gate

The Steel Step Corridor or Steel Step Barrier system was developed by SAFEROAD in Holland and has been used in the UK for many years. It is a high containment safety barrier compatible with Concrete Step Barrier (CSB) and can be used where a light weight solution is required, for example over a structure or to provide a maintenance or emergency access point within the length of a CSB. The Steel Step Barrier works independently of the CSB, but provides a smooth continuation of the H2 W2 containment. It can be connected to CSB without the need for complex transitions as it is the same profile containment level and working width. It can also be used independently as a standalone VRS.

The SSB is marketed in the UK by SAFEROAD UK Ltd as part of the Mega Rail family of products.



Contents

1 Safety

2 Tools

3 Components

4 Installation

5 Maintenance

6 Operating the SSB gate

7 Company contact details

1. Safety

- 1.1 A comprehensive site specific risk assessment must be produced for all locations where SSB is to be installed.
- 1.2 All lifting operations should be assessed by an appropriately qualified person and a lifting plan produced bespoke to the equipment being used.
- 1.3 All personnel to be trained in accordance with the tasks they are performing.

2. Tools

- 24mm impact socket
- Socket bar and impact wrench
- Torque wrench
- 6mm allen key
- 24mm spanners
- Podgers
- Chalk line
- Tape measure
- Large crow bar
- Crane or side loading fork lift
- Drilling equipment suitable for concrete
- Drill bits for M24 fixings use 40mm diameter.

3. Components

Note: special length closing sections can be manufactured to suit a bespoke length.



Fixed Hinge Section



Hinge Pin



Wheel Fork



One Wheeled Barrier Section with Hinge Joint



Wheel Unit



Two Wheeled Barrier Section with Hinge Joint



Wheel Units



Transition to Concrete



Female Socket



Bolt for Female Socket



Chemical Anchor Capsule



M16 Nut, Bolt & Washer



Ground Fixing Point



Upper Coupling Plate



Middle Coupling Plate



Lower Coupling Plate



Standard 5.450m Unit



Lower Anchor Plate
-Type 1



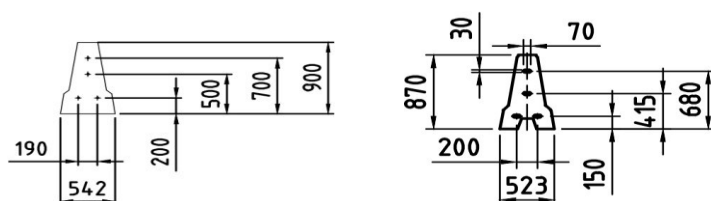
Upper Anchor Plate – Type 1

4. Installation

Setting out:

Ensure all units are orientated the same way to allow the correct assembly.

When attaching to CSB if a cradle anchorage is present attach the connection bracket directly to the CSB. If no cradle has been installed then the connection bracket can be fixed using resin anchors. To mark the hole positions place the connection bracket against the end of the CSB at the correct height. It is recommended that the center line of the CSB is marked to assist with this. Drill to the correct diameter. Install resin anchors in accordance with the manufactures instructions.



For subsequent units mark the center line of the SSB, mark 2 more lines 150mm either side of the center line at each ground fixing point. Put down another line 270mm from the center line which can be used to ensure the straight alignment of the SSB during assembly. Now position units and mark out drilling positions for each ground plate.

Move units, drill holes and fix anchors. Anchors should be allowed to cure and then tested to 40kN movement not to exceed 1mm.

Replace units and assemble, tighten all fasteners.

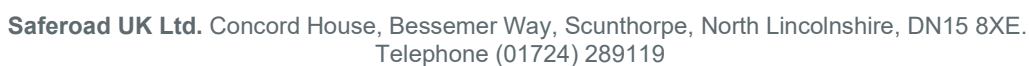
M16 70 – 140 Nm

M24 150 – 170Nm

5 Maintenance

SSB will be maintenance free for its service life.

Moving parts should be lubricates annually and the installation checked for damage.



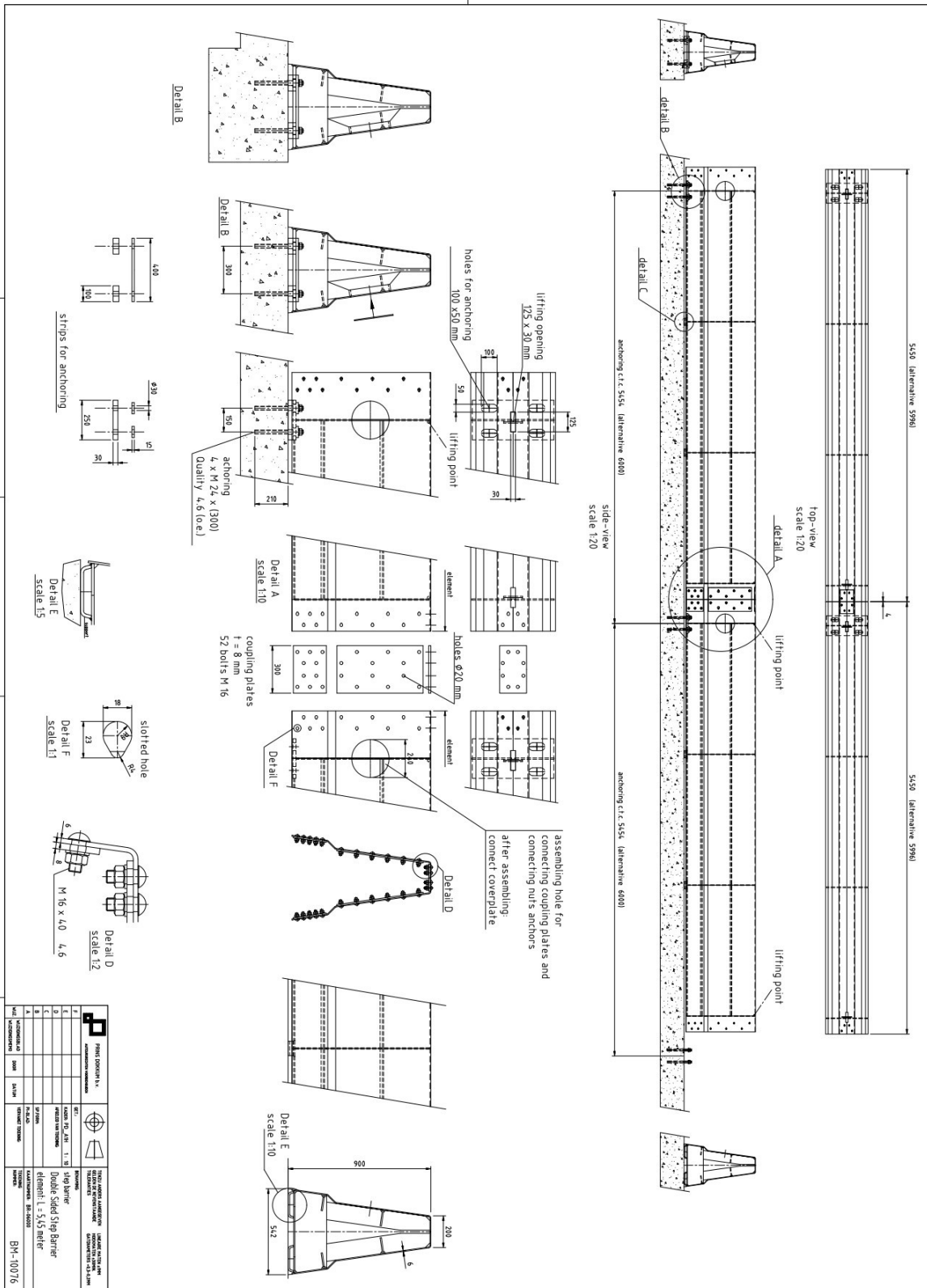
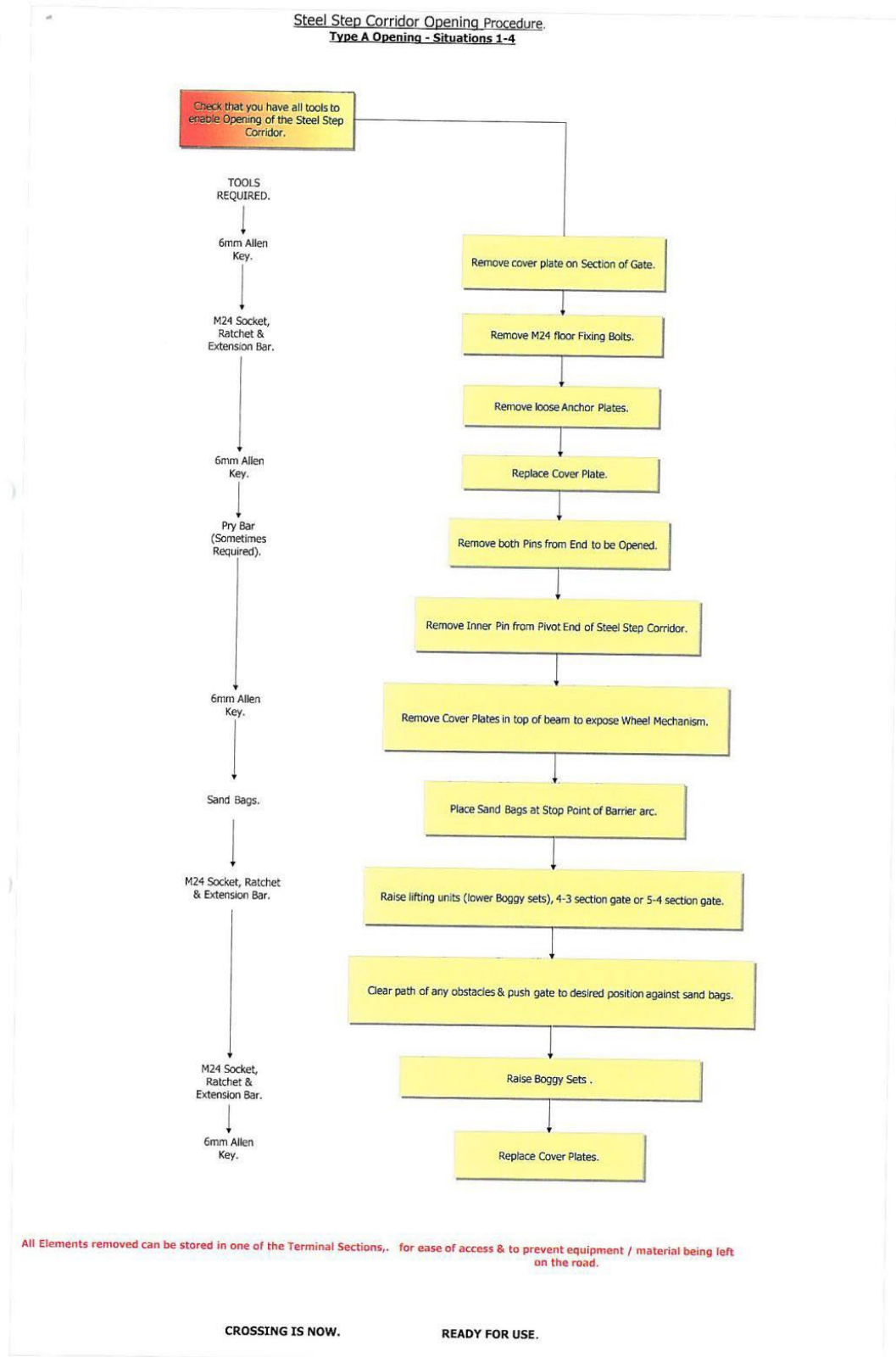
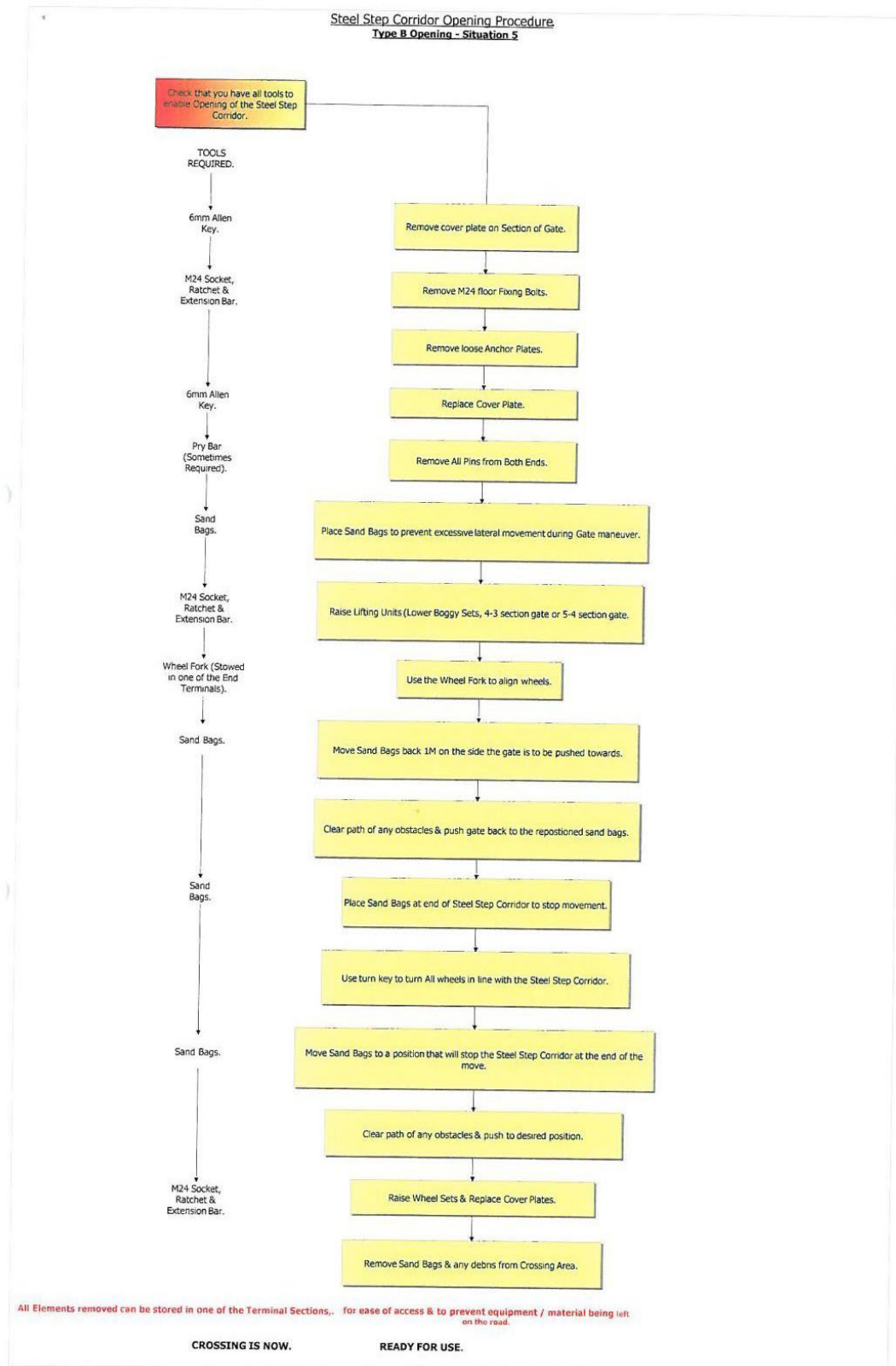
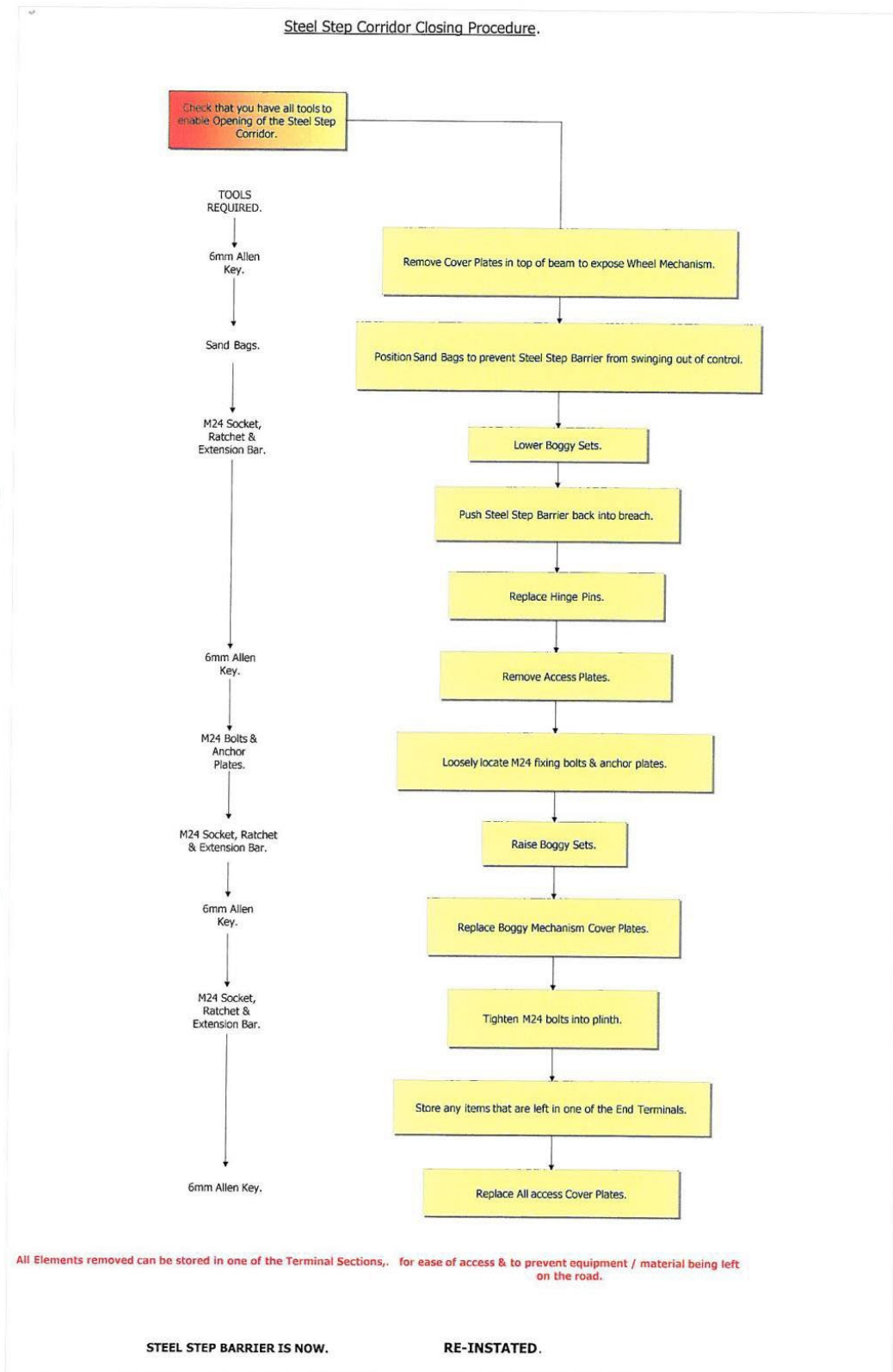


FIGURE	FIGURE DESCRIPTION	FIGURE REFERENCE	FIGURE REFERENCE
1	SAFEROAD	SAFEROAD	SAFEROAD
2	SAFEROAD	SAFEROAD	SAFEROAD
3	SAFEROAD	SAFEROAD	SAFEROAD
4	SAFEROAD	SAFEROAD	SAFEROAD
5	SAFEROAD	SAFEROAD	SAFEROAD
6	SAFEROAD	SAFEROAD	SAFEROAD
7	SAFEROAD	SAFEROAD	SAFEROAD
8	SAFEROAD	SAFEROAD	SAFEROAD
9	SAFEROAD	SAFEROAD	SAFEROAD
10	SAFEROAD	SAFEROAD	SAFEROAD
11	SAFEROAD	SAFEROAD	SAFEROAD
12	SAFEROAD	SAFEROAD	SAFEROAD
13	SAFEROAD	SAFEROAD	SAFEROAD
14	SAFEROAD	SAFEROAD	SAFEROAD
15	SAFEROAD	SAFEROAD	SAFEROAD
16	SAFEROAD	SAFEROAD	SAFEROAD
17	SAFEROAD	SAFEROAD	SAFEROAD
18	SAFEROAD	SAFEROAD	SAFEROAD
19	SAFEROAD	SAFEROAD	SAFEROAD
20	SAFEROAD	SAFEROAD	SAFEROAD
21	SAFEROAD	SAFEROAD	SAFEROAD
22	SAFEROAD	SAFEROAD	SAFEROAD
23	SAFEROAD	SAFEROAD	SAFEROAD
24	SAFEROAD	SAFEROAD	SAFEROAD
25	SAFEROAD	SAFEROAD	SAFEROAD
26	SAFEROAD	SAFEROAD	SAFEROAD
27	SAFEROAD	SAFEROAD	SAFEROAD
28	SAFEROAD	SAFEROAD	SAFEROAD
29	SAFEROAD	SAFEROAD	SAFEROAD
30	SAFEROAD	SAFEROAD	SAFEROAD
31	SAFEROAD	SAFEROAD	SAFEROAD
32	SAFEROAD	SAFEROAD	SAFEROAD
33	SAFEROAD	SAFEROAD	SAFEROAD
34	SAFEROAD	SAFEROAD	SAFEROAD
35	SAFEROAD	SAFEROAD	SAFEROAD
36	SAFEROAD	SAFEROAD	SAFEROAD
37	SAFEROAD	SAFEROAD	SAFEROAD
38	SAFEROAD	SAFEROAD	SAFEROAD
39	SAFEROAD	SAFEROAD	SAFEROAD
40	SAFEROAD	SAFEROAD	SAFEROAD
41	SAFEROAD	SAFEROAD	SAFEROAD
42	SAFEROAD	SAFEROAD	SAFEROAD
43	SAFEROAD	SAFEROAD	SAFEROAD
44	SAFEROAD	SAFEROAD	SAFEROAD
45	SAFEROAD	SAFEROAD	SAFEROAD
46	SAFEROAD	SAFEROAD	SAFEROAD
47	SAFEROAD	SAFEROAD	SAFEROAD
48	SAFEROAD	SAFEROAD	SAFEROAD
49	SAFEROAD	SAFEROAD	SAFEROAD
50	SAFEROAD	SAFEROAD	SAFEROAD
51	SAFEROAD	SAFEROAD	SAFEROAD
52	SAFEROAD	SAFEROAD	SAFEROAD
53	SAFEROAD	SAFEROAD	SAFEROAD
54	SAFEROAD	SAFEROAD	SAFEROAD
55	SAFEROAD	SAFEROAD	SAFEROAD
56	SAFEROAD	SAFEROAD	SAFEROAD
57	SAFEROAD	SAFEROAD	SAFEROAD
58	SAFEROAD	SAFEROAD	SAFEROAD
59	SAFEROAD	SAFEROAD	SAFEROAD
60	SAFEROAD	SAFEROAD	SAFEROAD
61	SAFEROAD	SAFEROAD	SAFEROAD
62	SAFEROAD	SAFEROAD	SAFEROAD
63	SAFEROAD	SAFEROAD	SAFEROAD
64	SAFEROAD	SAFEROAD	SAFEROAD
65	SAFEROAD	SAFEROAD	SAFEROAD
66	SAFEROAD	SAFEROAD	SAFEROAD
67	SAFEROAD	SAFEROAD	SAFEROAD
68	SAFEROAD	SAFEROAD	SAFEROAD
69	SAFEROAD	SAFEROAD	SAFEROAD
70	SAFEROAD	SAFEROAD	SAFEROAD
71	SAFEROAD	SAFEROAD	SAFEROAD
72	SAFEROAD	SAFEROAD	SAFEROAD
73	SAFEROAD	SAFEROAD	SAFEROAD
74	SAFEROAD	SAFEROAD	SAFEROAD
75	SAFEROAD	SAFEROAD	SAFEROAD
76	SAFEROAD	SAFEROAD	SAFEROAD
77	SAFEROAD	SAFEROAD	SAFEROAD
78	SAFEROAD	SAFEROAD	SAFEROAD
79	SAFEROAD	SAFEROAD	SAFEROAD
80	SAFEROAD	SAFEROAD	SAFEROAD
81	SAFEROAD	SAFEROAD	SAFEROAD
82	SAFEROAD	SAFEROAD	SAFEROAD
83	SAFEROAD	SAFEROAD	SAFEROAD
84	SAFEROAD	SAFEROAD	SAFEROAD
85	SAFEROAD	SAFEROAD	SAFEROAD
86	SAFEROAD	SAFEROAD	SAFEROAD
87	SAFEROAD	SAFEROAD	SAFEROAD
88	SAFEROAD	SAFEROAD	SAFEROAD
89	SAFEROAD	SAFEROAD	SAFEROAD
90	SAFEROAD	SAFEROAD	SAFEROAD
91	SAFEROAD	SAFEROAD	SAFEROAD
92	SAFEROAD	SAFEROAD	SAFEROAD
93	SAFEROAD	SAFEROAD	SAFEROAD
94	SAFEROAD	SAFEROAD	SAFEROAD
95	SAFEROAD	SAFEROAD	SAFEROAD
96	SAFEROAD	SAFEROAD	SAFEROAD
97	SAFEROAD	SAFEROAD	SAFEROAD
98	SAFEROAD	SAFEROAD	SAFEROAD
99	SAFEROAD	SAFEROAD	SAFEROAD
100	SAFEROAD	SAFEROAD	SAFEROAD

6 Operating the SSB Gate







7 Company contact details:-

SAFEROAD UK Ltd
Concord House
Bessemer Way
Scunthorpe
North Lincolnshire
DN15 8XE
Tel: 01724 289119

For Material Supply Information

Email – sales@saferoad.co.uk

For Technical Information

Email – john.cudlipp@saferoad.co.uk

For Training Requirements

Email – training@saferoad.co.uk