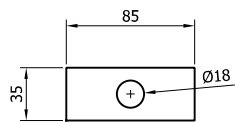
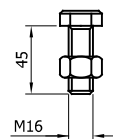


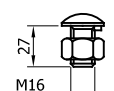
SR000 - "A" PROFILE BEAM 4.3m x 2.5mm THK



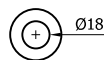
SR155 - WASHER PLATE
85 x 35 x 4 DIA. 18



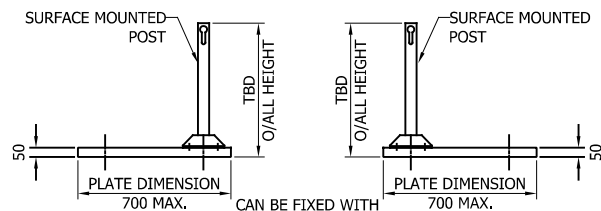
SR201 - SETSCREW 8.8
M16x45 c/w NUT



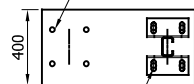
SR200 - SETSCREW 4.6
LIP M16x27 c/w NUT



SR300 - WASHER
18ø

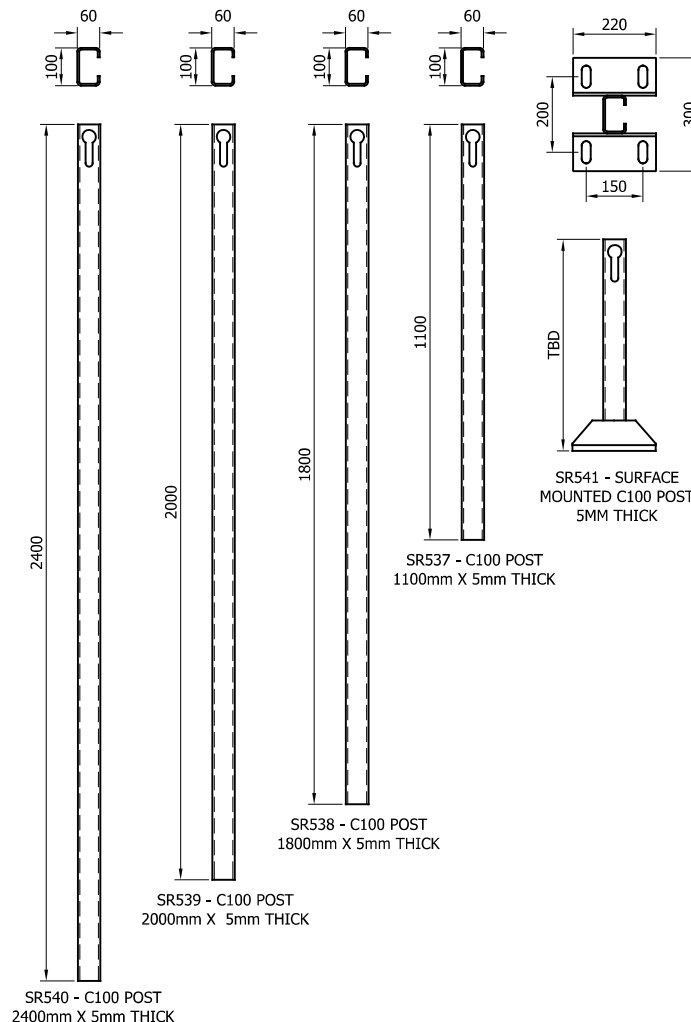
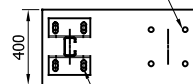


CAN BE FIXED WITH
CAST IN ANCHORS, DRILL
AND FIX ANCHORS OR
PUSHED IN ANCHORS
AT 180x180 CENTERS



*BASEPLATE DRILL
& TAPPED FOR
LIFTING EYE

4x M20 THREADED HOLES

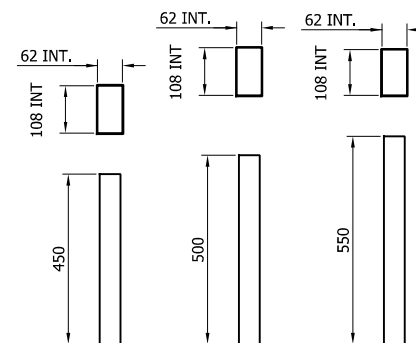


SR540 - C100 POST
2400mm X 5mm THICK

SR538 - C100 POST
1800mm X 5mm THICK

SR539 - C100 POST
2000mm X 5mm THICK

SR537 - C100 POST
1100mm X 5mm THICK



SR181 - C-100
POST SOCKET
x 450

SR182 - C-100
POST SOCKET
x 500

SR183 - C-100
POST SOCKET
x 550



SR100 - A21
REINFORCING
RING

| | | | |
|------|----------|--|---------|
| 11 | 21/03/24 | POST TYPE CHANGE | H.B |
| 10 | 20/06/23 | SOCKET SIZE CHANGED | A.D |
| 09 | 21/07/22 | SOCKET SIZE CHANGED | A.D |
| 08 | 27/06/22 | SURFACE MOUNTED POST HEIGHT CHANGED | A.D |
| 07 | 13/05/22 | SURFACE MOUNTED POST BASE CHANGED | A.D |
| 06 | 19/01/22 | STIFFENER ADDED SMP | A.D |
| 05 | 27/05/21 | DETAILS REVISED | M.T |
| 04 | 12/02/19 | TITLEBLOCK REVISED | H.B |
| 03 | 26.11.18 | BASEPLATE DETAIL REVISED | H.B |
| 02 | 06/06/18 | BEAM TYPE ADDED | H.B |
| 01 | 20/04/17 | BEAM TYPE REVISED | M.T |
| 00 | 13/02/17 | DRAWING CREATED | L.L |
| REVn | DATE | DETAILS | INITIAL |

MegaRail ep N2W2/H1W3 VI 5

N2W2/H1W3 VEHICLE RESTRAINT
SYSTEM
COMPONENTS SCHEMATIC



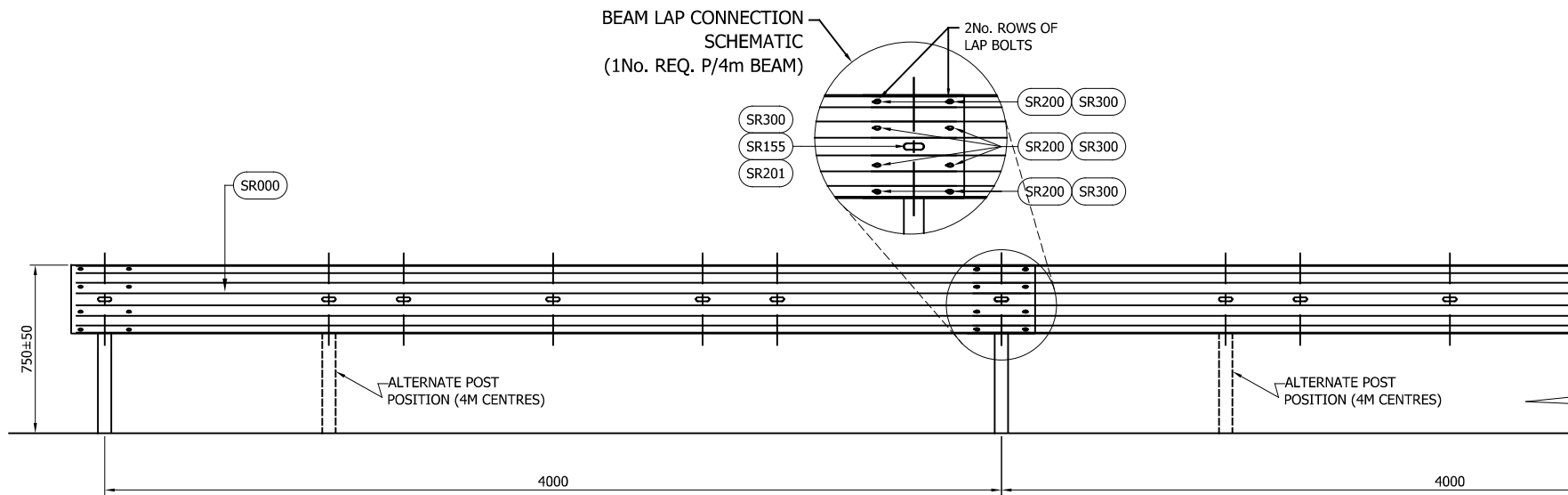
CONCORD HOUSE,
BESSEMER WAY, SCUNTHORPE,
NORTH LINCOLNSHIRE, DN15 8XE
t: 01724 289119
FOR TECHNICAL ASSISTANCE CONTACT
john.cudlipp@saferoad.co.uk

DRAWING NUMBER:

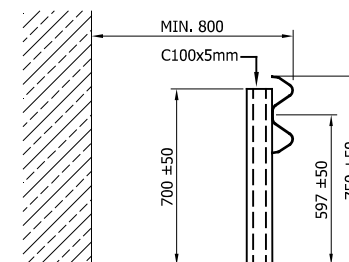
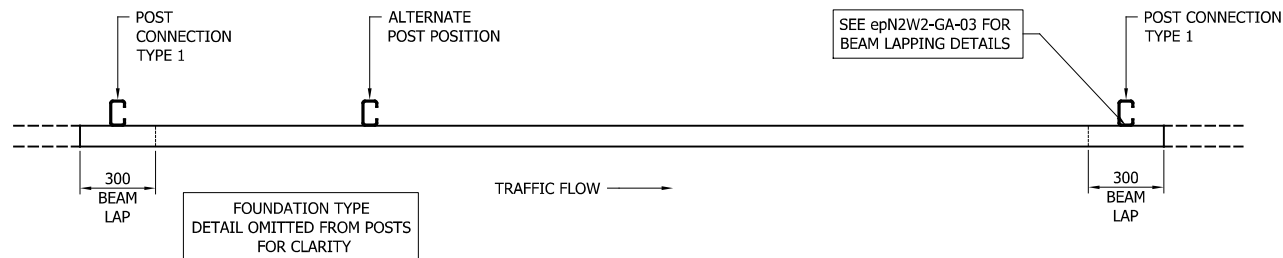
epN2W2-GA-00

REVn:

11



- GENERAL NOTES:
1. P.S.B. = POINT FROM WHERE SET-BACK IS MEASURED.
 2. POSTS ARE TO BE INSTALLED WITH THE CLOSED FACE OF THE CHANNEL TOWARDS THE ON-COMING TRAFFIC.
 3. FOR OPTIONS ON POST FOUNDATIONS REFER TO DRAWING NUMBER MR-GA-020
 4. FOR DEVIATIONS IN SYSTEM POST PITCH REFER TO DRAWING epN2W2-GA-40
 5. WHEN TYING INTO ADJACENT VRS ONLY ONE WORKING WIDTH DIFFERENCE IS PERMITTED.
 6. WHERE A KERB IS PRESENT THE MAXIMUM KERB HEIGHT IS 100mm. SHOULD THE KERB BE HIGHER THAN 100mm AND THE FENCE IS SETBACK LESS THAN 250mm FROM FACE OF KERB THE SYSTEM HEIGHT IS MEASURED FROM THE CARRIAGEWAY. IF THE SETBACK IS MORE THAN 250mm FROM THE FACE OF KERB THE SYSTEM HEIGHT IS MEASURED FROM THE TOP OF THE KERB. SEE MR-GA-002.
 7. FOR MINIMUM LENGTH OF FULL HEIGHT VRS REFER TO SAFEROAD MEGARAIL MANUAL.



| | | | |
|------|----------|------------------------------------|---------|
| 06 | 21/03/24 | POST TYPE CHANGE & DETAILS UPDATED | H.B |
| 05 | 18/03/22 | TABLE 'A' REVISED | A.D |
| 04 | 08/10/21 | TOLERANCES ADDED | A.D |
| 03 | 26/05/21 | NOTES REVISED | M.T |
| 02 | 12/02/19 | TITLEBLOCK REVISED | H.B |
| 01 | 20/04/17 | BEAM TYPE REVISED | M.T |
| 00 | 13/02/17 | DRAWING CREATED | L.L |
| REVn | DATE | DETAILS | INITIAL |

MegaRail ep N2W2/H1W3 VI 5

SYSTEM ASSEMBLY AND SETTING
OUT ARRANGEMENT SCHEMATIC

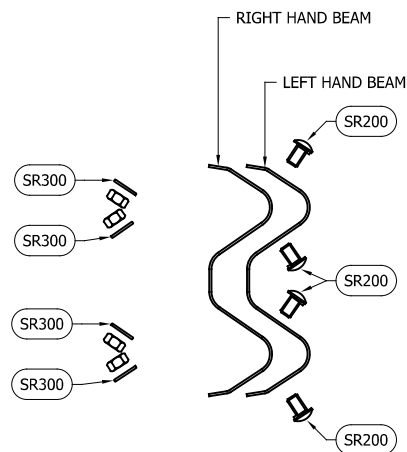


CONCORD HOUSE,
BESSEMER WAY, SCUNTHORPE,
NORTH LINCOLNSHIRE, DN15 8XE
t: 01724 289119
FOR TECHNICAL ASSISTANCE CONTACT
john.cudlipp@saferoad.co.uk

| | |
|-----------------|-------|
| DRAWING NUMBER: | REVn: |
| epN2W2-GA-01 | 06 |

| TOTAL COMPONENTS PER 4M BEAM | | |
|---|-------------------------------|----------|
| SAFEROAD PART NUMBER | DESCRIPTION | QUANTITY |
| SR000 | BEAM "A" PROFILE 4.3m x 2.5mm | 1 |
| SEE TABLE 'B' | POST C100 (5mm THICK) | 1 |
| FOR SCHEDULE OF BOLTED CONNECTIONS REFER TO DRAWING NUMBER epN2W2-GA-02 | | |

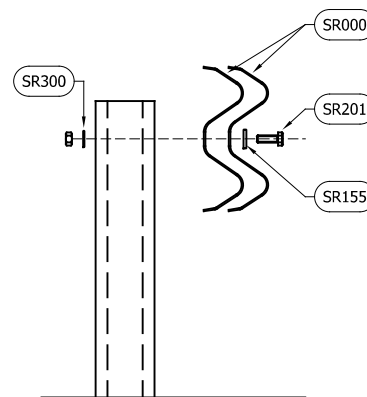
| TABLE 'B' - SCHEDULE OF POST REFERENCE NUMBERS AND LENGTHS | |
|---|-------------|
| SAFEROAD PART NUMBER | POST LENGTH |
| SR537 | 1100 |
| SR538 | 1800 |
| SR539 | 2000 |
| SR540 | 2400 |



BEAM LAP FIXING SCHEMATIC
(x2 LOCATIONS / BEAM END)

** BEAM REFERENCES i.e. LEFT / RIGHT HAND ARE FOR VERGE INSTALLATIONS; FOR CENTRAL RESERVATION INSTALLATIONS THE REFERENCES ARE REVERSED

| TOTAL QUANTITIES PER BEAM | | |
|---------------------------|---------------------------------|---------------------|
| SAFEROAD PART NUMBER | DESCRIPTION | BEAM LAP CONNECTION |
| SR200 | SETSCREW 4.6 LIP M16x27 c/w NUT | 8 (+8) |
| SR300 | WASHER M16 18Ø HOLE | 8 (+8) |



BEAM TO POST FIXING
SCHEMATIC
(CONNECTION TYPE 1)

| TOTAL QUANTITIES PER POST | | |
|---------------------------|----------------------------------|-------------------------|
| SAFEROAD PART NUMBER | DESCRIPTION | BEAM TO POST CONNECTION |
| SR201 | SETSCREW 8.8 M16 x 45 c/w NUT | 1 |
| SR155 | WASHER PLATE 85 x 35 x 4 DIA. 18 | 1 |
| SR300 | WASHER M16 18Ø HOLE | 1 |

GENERAL NOTES:

- NUMBERS IN THE SCHEDULES SUFFIXED (+) DENOTES THE ADDITIONAL QUANTITY OF COMPONENTS REQUIRED FOR EXTREME ENDS OF INDIVIDUAL RUNS OF BARRIER.

| | | | |
|------|----------|--------------------|---------|
| 04 | 21/03/24 | POST TYPE CHANGE | H.B |
| 03 | 27/07/21 | DETAILS REVISED | M.T |
| 02 | 12/02/19 | TITLEBLOCK REVISED | H.B |
| 01 | 20/04/17 | BEAM TYPE REVISED | M.T |
| 00 | 13/02/17 | DRAWING CREATED | L.L |
| REVn | DATE | DETAILS | INITIAL |

MegaRail ep N2W2/H1W3 VI 5

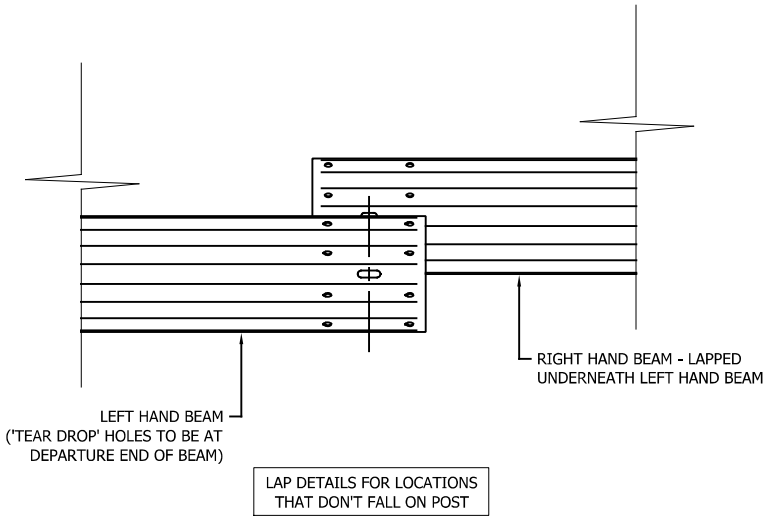
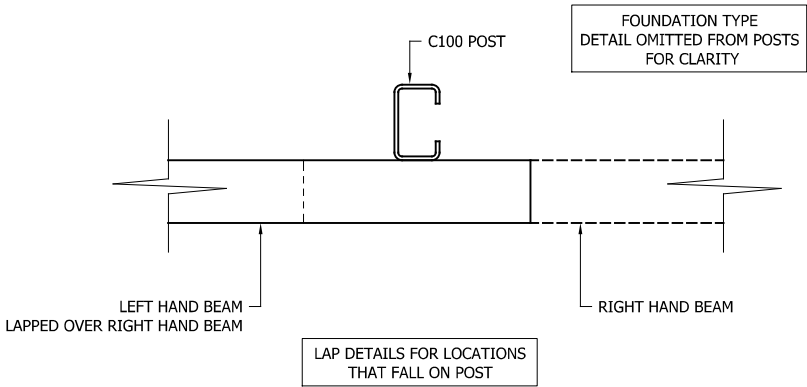
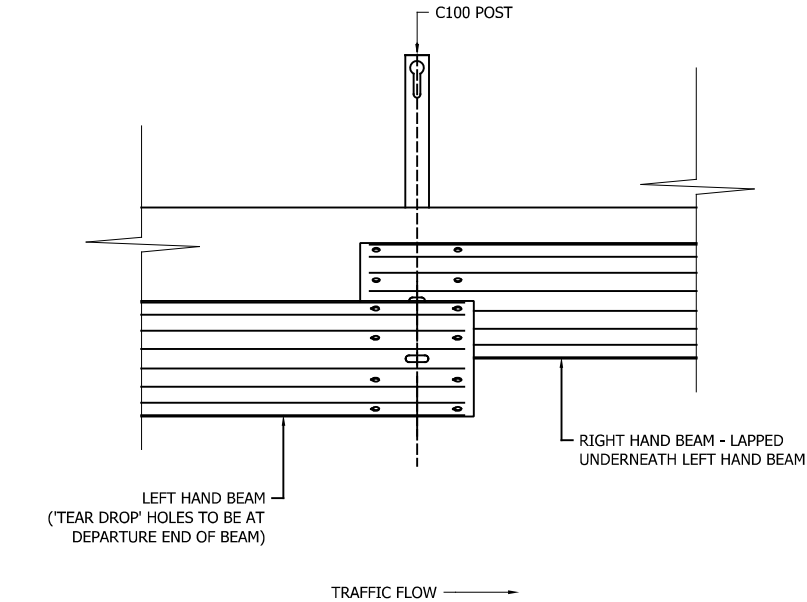
FIXING & INSTALLATION SCHEMATIC



CONCORD HOUSE,
BESSEMER WAY, SCUNTHORPE,
NORTH LINCOLNSHIRE, DN15 8XE
t: 01724 289119
FOR TECHNICAL ASSISTANCE CONTACT
john.cudlipp@saferoad.co.uk

| | |
|-----------------|-------|
| DRAWING NUMBER: | REVn: |
| epN2W2-GA-02 | 04 |

- GENERAL NOTES:
1. POSTS ARE TO BE INSTALLED WITH THE CLOSED FACE OF THE CHANNEL TOWARDS THE ON-COMING TRAFFIC.



| | | | |
|------|----------|--------------------|---------|
| 02 | 21/03/24 | DRAWING UPDATED | H.B |
| 01 | 12/02/19 | TITLEBLOCK REVISED | H.B |
| 00 | 13/02/17 | DRAWING CREATED | L.L |
| REVn | DATE | DETAILS | INITIAL |

MegaRail ep N2W2/H1W3 VI 5

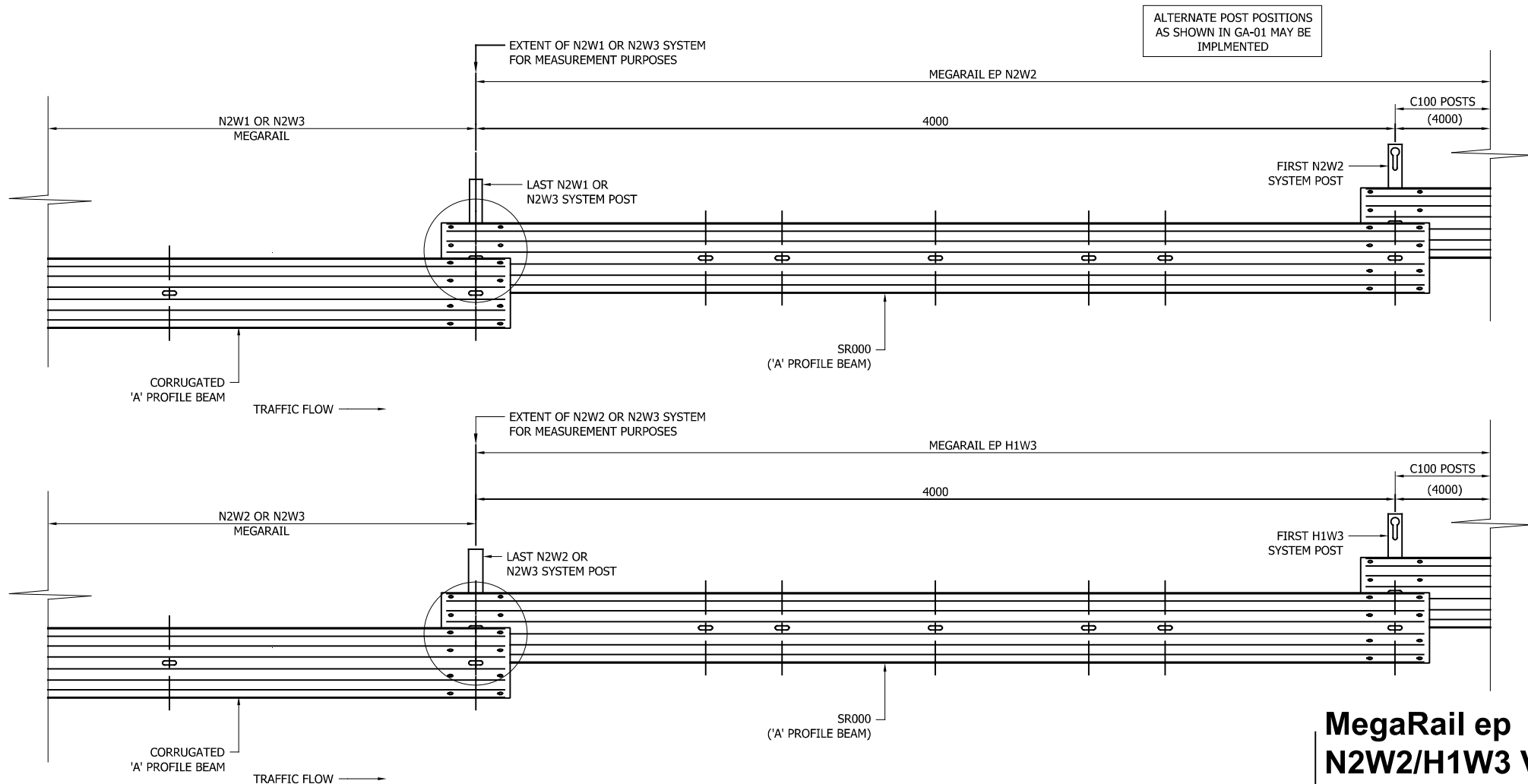
BEAM LAPPING DETAILS



CONCORD HOUSE,
BESSEMER WAY, SCUNTHORPE,
NORTH LINCOLNSHIRE, DN15 8XE
t: 01724 289119
FOR TECHNICAL ASSISTANCE CONTACT
john.cudlipp@saferoad.co.uk

| | |
|-----------------|-------|
| DRAWING NUMBER: | REVn: |
| epN2W2-GA-03 | 02 |

** BEAM REFERENCES i.e. LEFT / RIGHT HAND ARE FOR VERGE INSTALLATIONS; FOR CENTRAL RESERVATION INSTALLATIONS THE REFERENCES ARE REVERSED



MegaRail ep N2W2/H1W3 VI 5

SYSTEM PROGRESSION DETAILS



CONCORD HOUSE,
BESSEMER WAY, SCUNTHORPE,
NORTH LINCOLNSHIRE, DN15 8XE
t: 01724 289119
FOR TECHNICAL ASSISTANCE CONTACT
john.cudlipp@saferoad.co.uk

DRAWING NUMBER:

REVn:

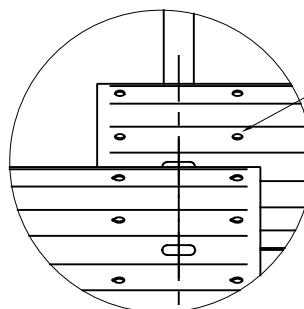
epN2W2-GA-20

04

GENERAL NOTES:

1. POSTS ARE TO BE INSTALLED WITH THE CLOSED FACE OF THE CHANNEL TOWARDS THE ON-COMING TRAFFIC.

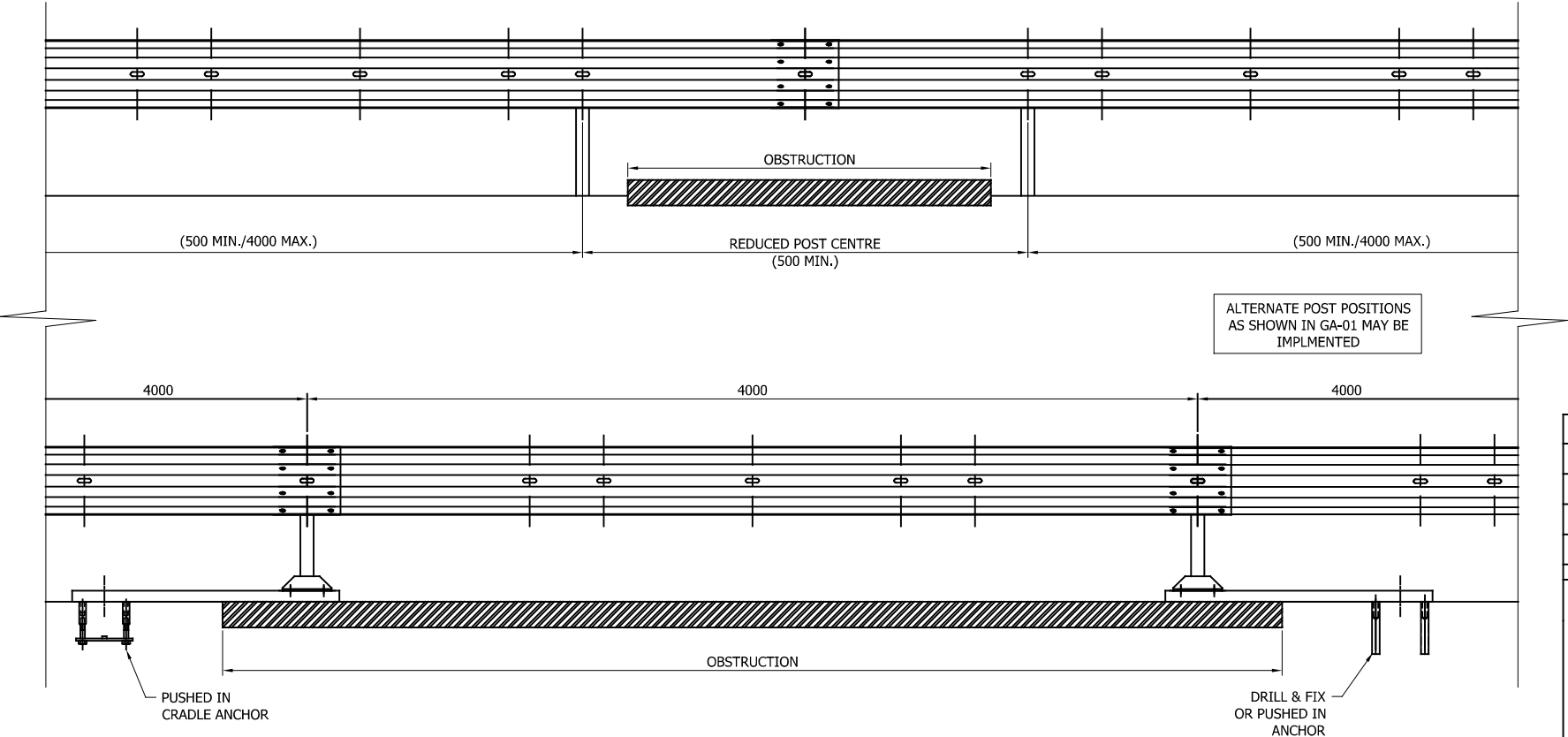
** BEAM REFERENCES i.e. LEFT / RIGHT HAND ARE FOR VERGE INSTALLATIONS; FOR CENTRAL RESERVATION INSTALLATIONS THE REFERENCES ARE REVERSED



NOTE: BEAM ORIENTATION CIRCULAR HOLES TO BEAM APPROACH END

| | | | |
|------|----------|----------------------|---------|
| 04 | 21/03/24 | DRAWING UPDATED | H.B |
| 03 | 26.05.21 | DETAILS REVISED | M.T |
| 02 | 20/06/19 | LOWER DETAIL REVISED | M.T |
| 01 | 12/02/19 | TITLEBLOCK REVISED | H.B |
| 00 | 13/02/17 | DRAWING CREATED | L.L |
| REVn | DATE | DETAILS | INITIAL |

- GENERAL NOTES:
1. IN PRINCIPLE, THE DISTANCE BETWEEN THE POSTS ARE NOT EXCEEDED. IF THE SITE CONDITIONS DO NOT ALLOW A REGULAR DISTANCE, THE POST SPACING MUST BE REDUCED WITH AN ADDITIONAL POST.
 2. OFFSET POSTS SHOWN ON DRAWING epN2W2-GA-00 CAN BE USED.



| | | | |
|------|----------|-----------------------------------|---------|
| 04 | 21/03/24 | DRAWING UPDATED | H.B |
| 03 | 13/05/22 | SURFACE MOUNTED POST BASE CHANGED | A,D |
| 02 | 23/07/21 | SURFACE MOUNTED POST DETAIL ADDED | A,D |
| 01 | 12/02/19 | TITLEBLOCK REVISED | H,B |
| 00 | 13/02/17 | DRAWING CREATED | L,L |
| REVn | DATE | DETAILS | INITIAL |

MegaRail ep
N2W2/H1W3 VI 5

DETAILS OF PERMISSABLE
DEVIATIONS FOR POST POSITIONS



CONCORD HOUSE,
BESSEMER WAY, SCUNTHORPE,
NORTH LINCOLNSHIRE, DN15 8XE
t: 01724 289119
FOR TECHNICAL ASSISTANCE CONTACT
john.cudlipp@saferoad.co.uk

| | |
|-----------------|-------|
| DRAWING NUMBER: | REVn: |
| epN2W2-GA-40 | 04 |