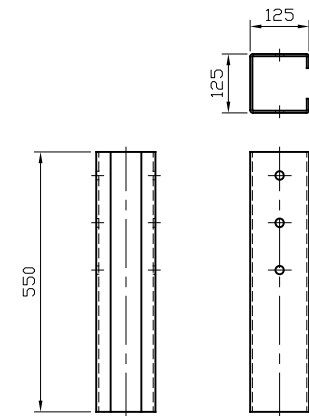
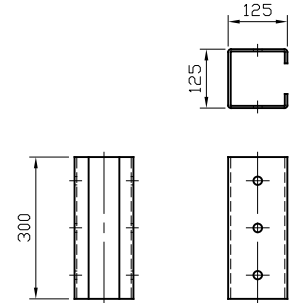


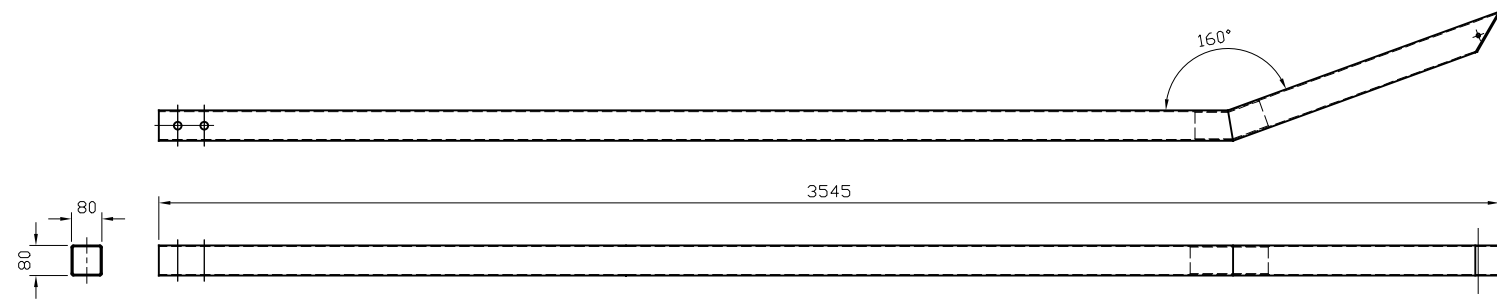
SR028 - 'A' PROFILE CORRUGATE BEAM (3MM)
2No. REQ. PER TRANSITION



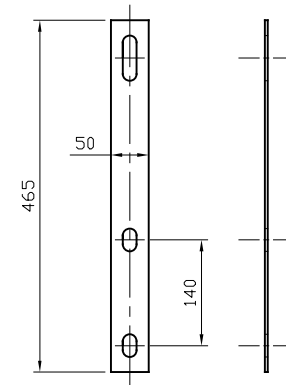
SR782 - SAFEFLEX TRANSITION
LONG CRUSH BRACKET
4No. REQ. PER TRANSITION



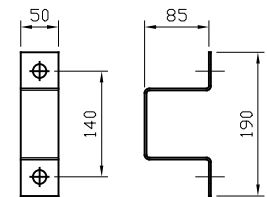
SR783 - SAFEFLEX TRANSITION
SHORT CRUSH BRACKET
3No. REQ. PER TRANSITION



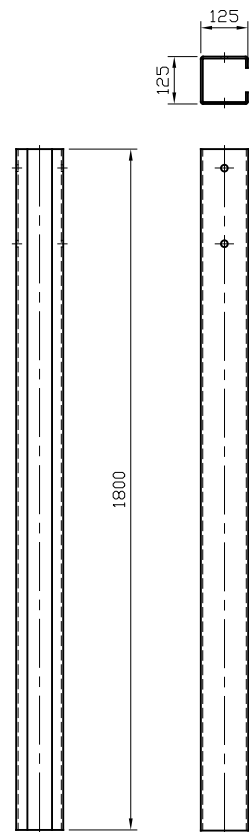
SR786 - SAFEFLEX TRANSITION
FLARED RUBBING RAIL
1No. REQ. PER TRANSITION



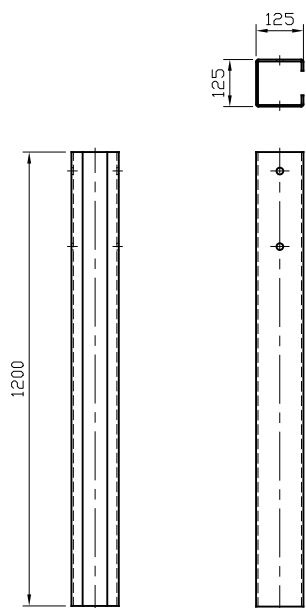
SR784 - SAFEFLEX TRANSITION
RUBBING RAIL HANGING BRACKET
2No. REQ. PER TRANSITION



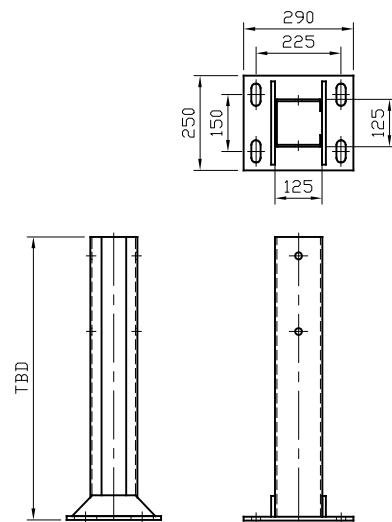
SR785 - SAFEFLEX TRANSITION
RUBBING RAIL TOP HAT BRACKET
2No. REQ. PER TRANSITION



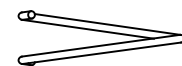
SR788 - SAFEFLEX TRANSITION
C125x125 DRIVEN POST



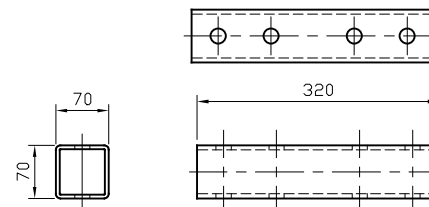
SR789 - SAFEFLEX TRANSITION
C125x125 SOCKETED POST



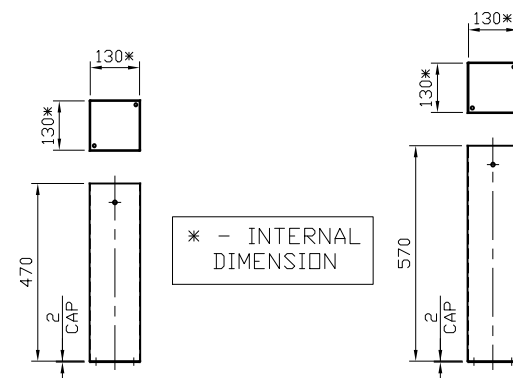
SAFEFLEX TRANSITION C125x125
SURFACE MOUNTED POST



SR100 - REINFORCING RING
1No. REQ. PER SOCKETED POST,
EXCLUDING INSTANCES THAT HAVE
CORED FOUNDATIONS




SR787 - SAFEFLEX TRANSITION
RUBBING RAIL CONNECTION JOINT
1No. REQ. PER TRANSITION

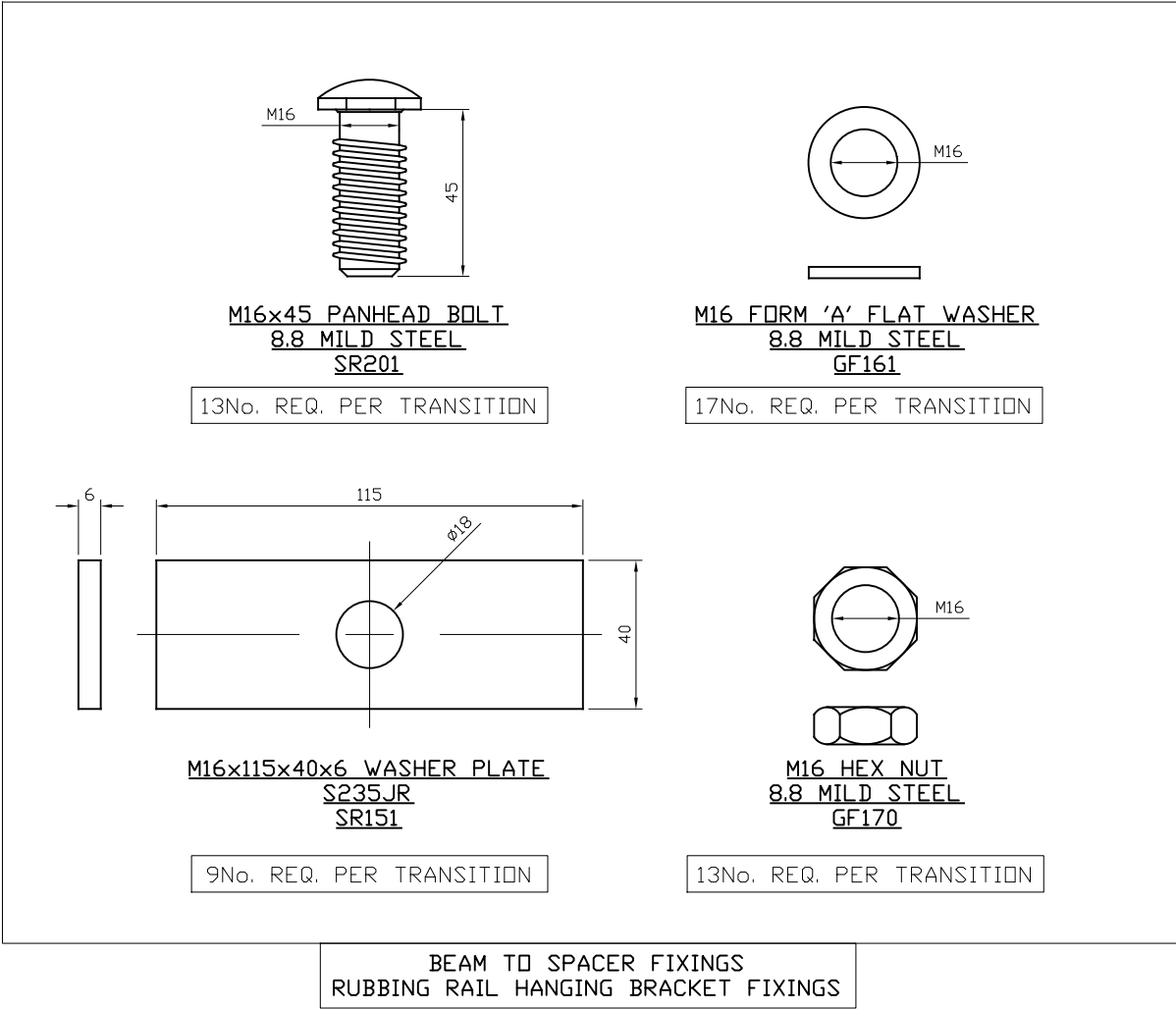


SR184 - C125x125
POST SOCKET 470MM

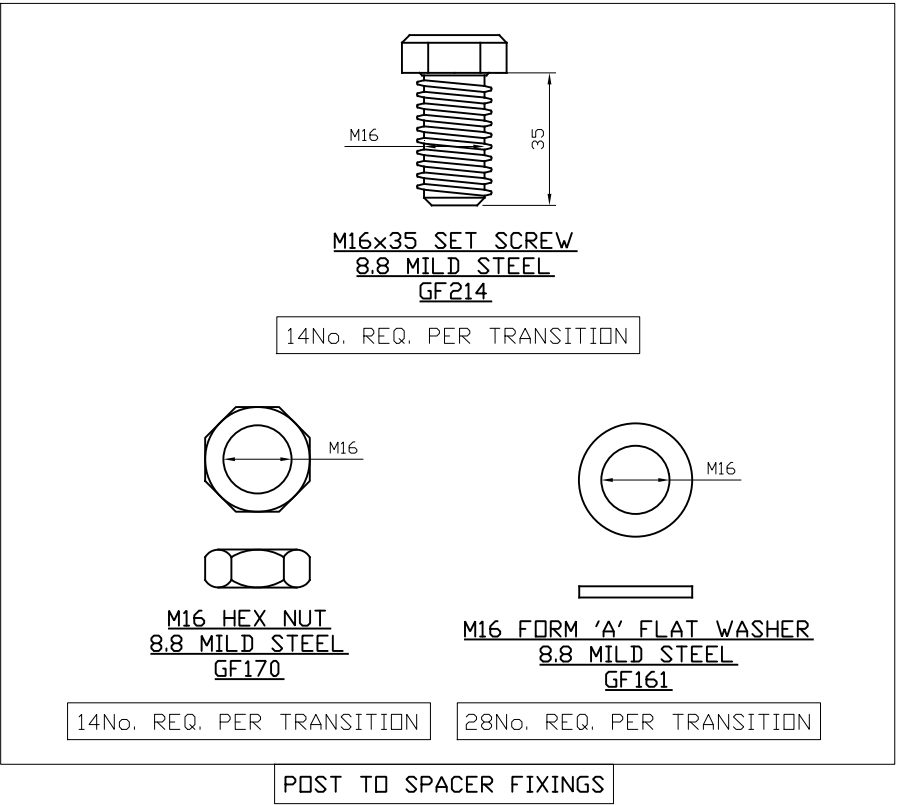
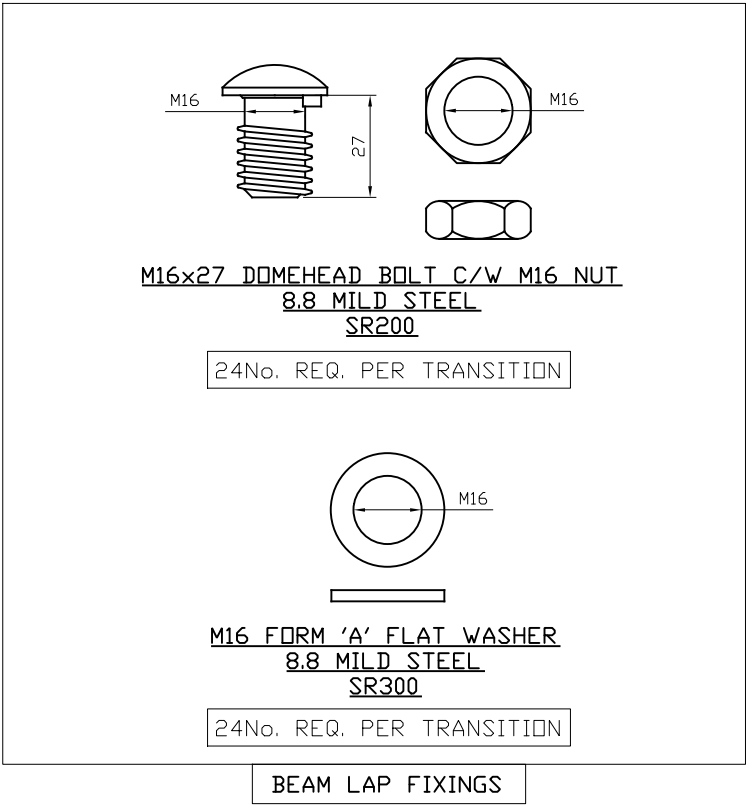
SR185 - C125x125
POST SOCKET 570MM

CONNECTING SYSTEM SPECIFIC COMPONENTS
SUCH AS; SAFETY FENCE CONNECTORS,
CONNECTION JOINTS ETC. ARE DETAILED WITHIN
SYSTEM INSTALLATION SCHEMATICS

00	29/04/24	DRAWING CREATED	H.B
REVn	DATE	DETAILS	INITIAL
SAFEFLEX TRANSITION			
COMPONENTS SCHEMATIC			
			
CONCORD HOUSE, BESSEMER WAY, SCUNTHORPE, NORTH LINCOLNSHIRE, DN15 8XE T: 01724 289119 FOR TECHNICAL ASSISTANCE CONTACT john.cudlipp@saferoad.co.uk			
DRAWING NUMBER:			REVn:
SF-GA-00			00

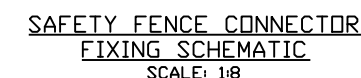


CONNECTING SYSTEM SPECIFIC FIXINGS, SUCH AS; SAFETY FENCE CONNECTORS FIXINGS, CONNECTION JOINT FIXINGS ETC. ARE DETAILED WITHIN SYSTEM INSTALLATION SCHEMATICS



00	29/04/24	DRAWING CREATED	H.B
REVn	DATE	DETAILS	INITIAL
SAFEFLEX TRANSITION			
FIXINGS SHEET			
<div><div></div><div>SAFEROAD</div></div>			
CONCORD HOUSE, BESSEMER WAY, SCUNTHORPE, NORTH LINCOLNSHIRE, DN15 8XE T: 01724 289119 FOR TECHNICAL ASSISTANCE CONTACT john.cudlipp@saferoad.co.uk			
DRAWING NUMBER:			REVn:
SF-GA-01			00

[illegible]



MACHINING NOTES

MACHINE WHERE MARKED BY REMOVE SHARP EDGES TOLERANCES UNLESS STATED OTHERWISE DIMENSIONAL ± 0.015(0.4mm)

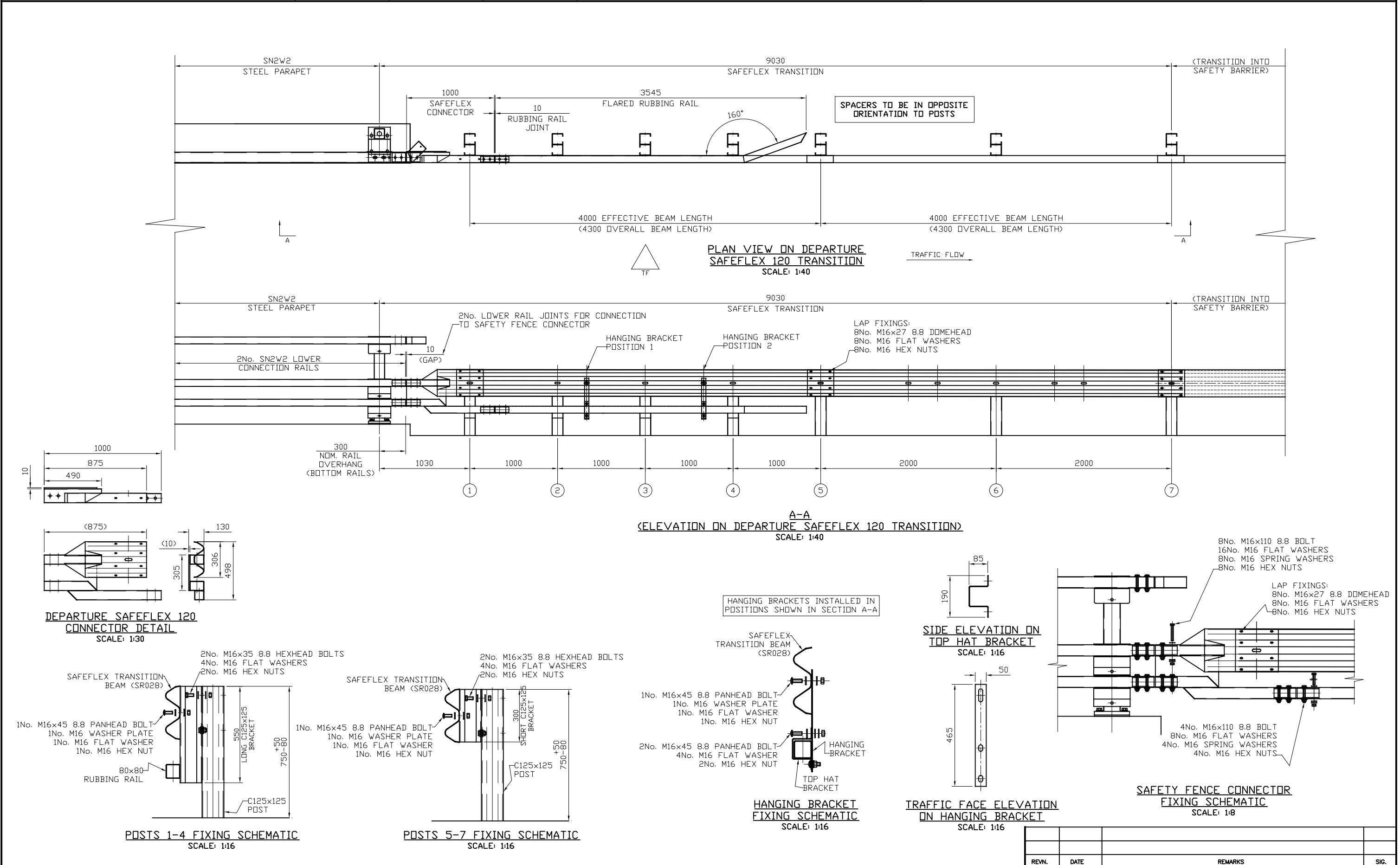
FABRICATION NOTES

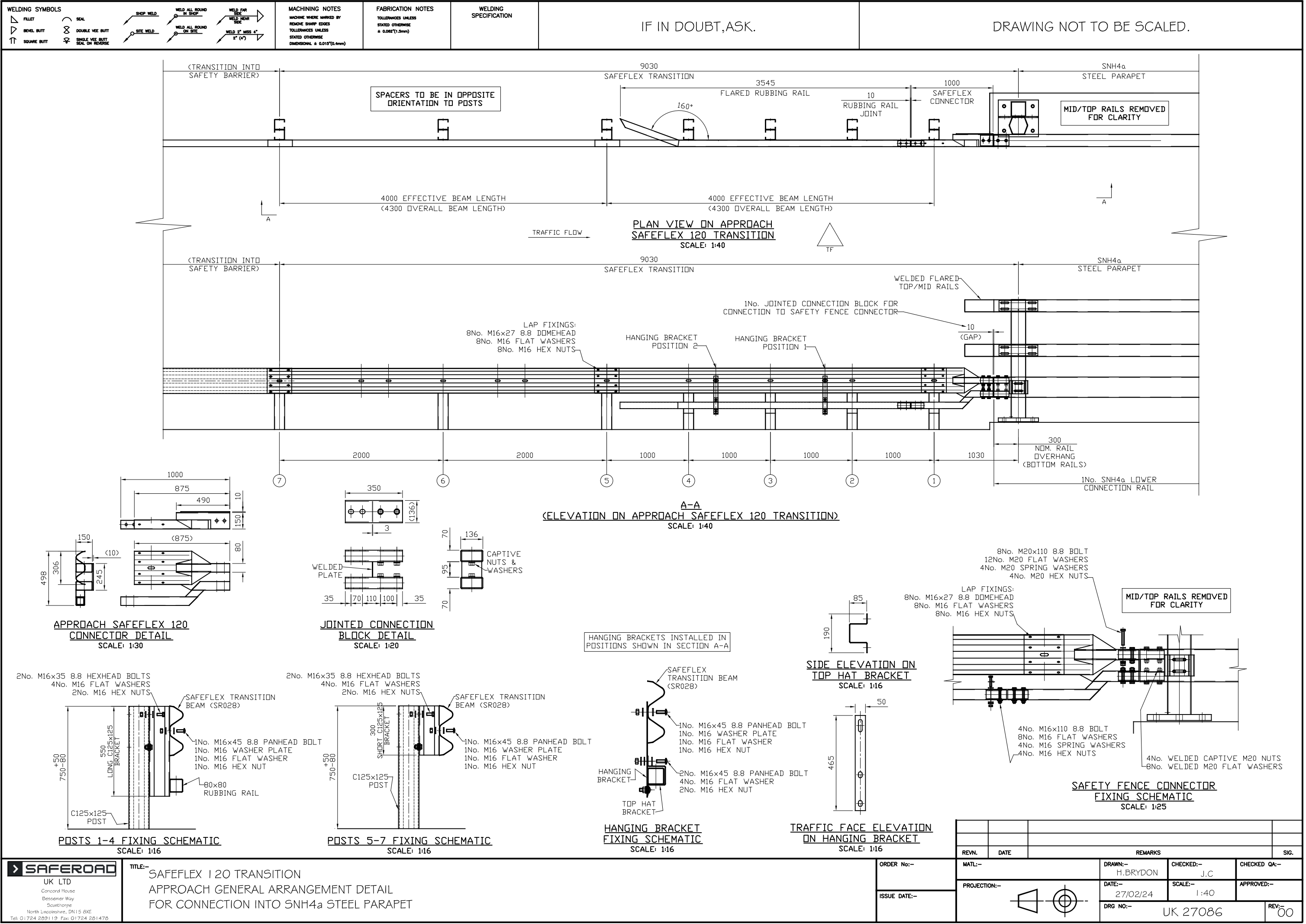
TOLERANCES UNLESS STATED OTHERWISE ± 0.062(1.5mm)







WELDING SPECIFICATION

IF IN DOUBT,ASK.

DRAWING NOT TO BE SCALED.





	FILLET		SEAL
	BEVEL BUTT		DOUBLE VEE BUTT
	SQUARE BUTT		SINGLE VEE BUTT SEAL ON REVERSE

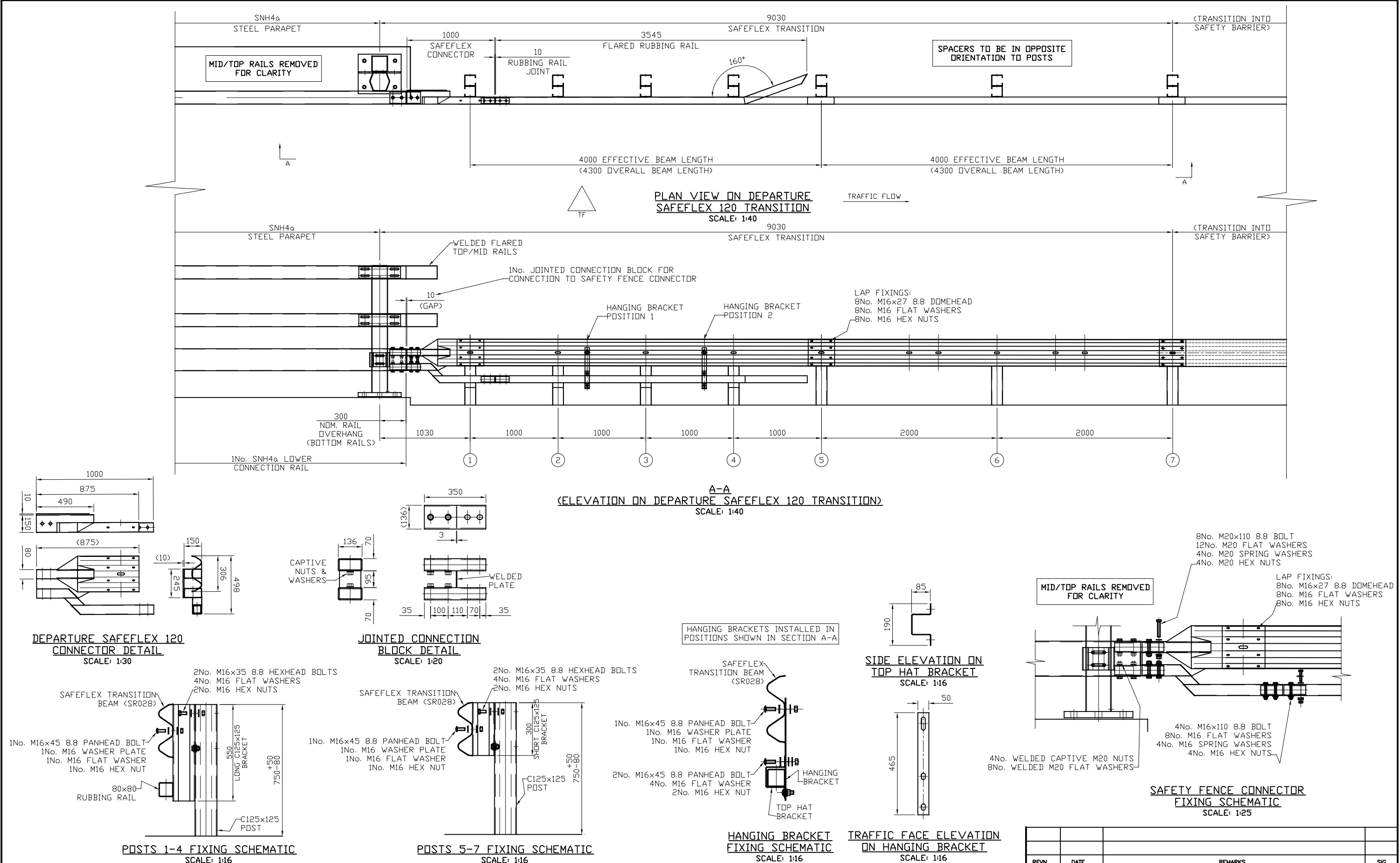
MACHINE WHERE MARKED BY
REMOVE SHARP EDGES
TOLLERANCES UNLESS
STATED OTHERWISE
DIMENSIONAL $\pm 0.015"$ (0.4mm)

TOLLERANCES UNLESS
STATED OTHERWISE
 $\pm 0.062"$ (1.5mm)

WELDING SPECIFICATION

IF IN DOUBT, ASK.

DRAWING NOT TO BE SCALED.



TITLE:- SAFEFLEX 120 TRANSITION
DEPARTURE GENERAL ARRANGEMENT DETAIL
FOR CONNECTION INTO SNH4a STEEL PARAPET

ORDER No:-

ISSUE DATE:—

MATL:-

PROJECTION:—

DRAWN:-

H. BRYDON

DATE:—

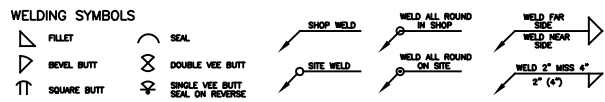
27/02/24

CHECKED QA:—

APPROVED:—

DRG NO:- UK 27087

REV:-
00



MACHINING NOTES

MACHINE WHERE MARKED BY
REMOVE SHARP EDGES
TOLERANCES UNLESS
STATED OTHERWISE
DIMENSIONAL ± 0.015 (0.4mm)

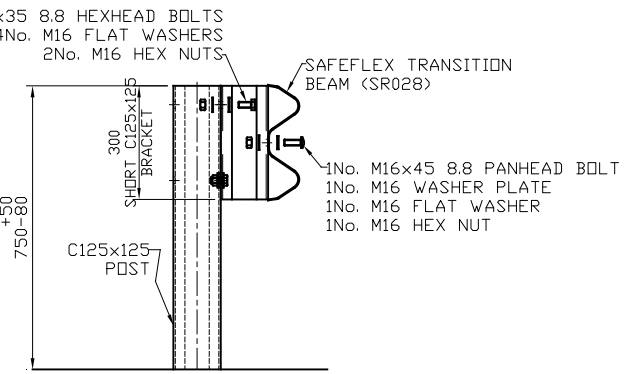
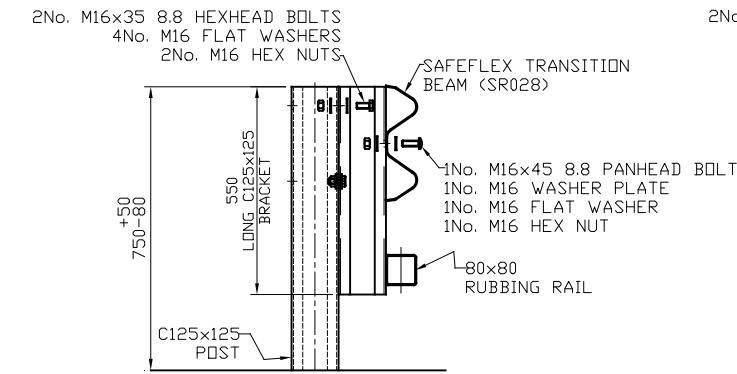
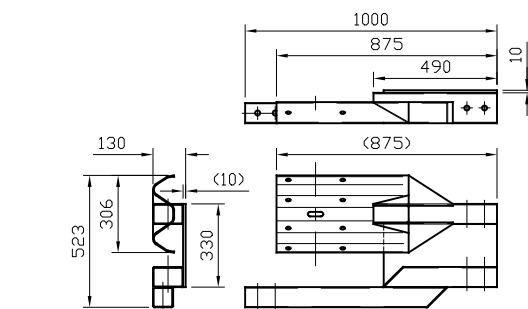
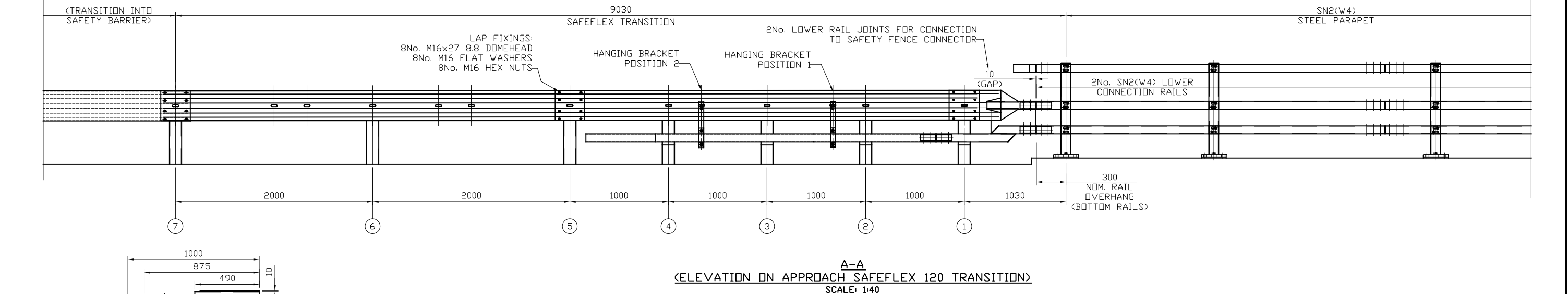
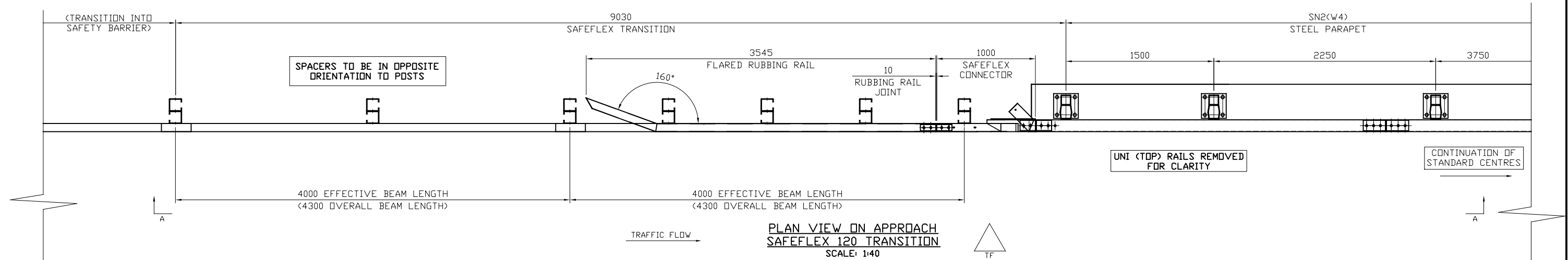
FABRICATION NOTES

TOLERANCES UNLESS
STATED OTHERWISE
 ± 0.062 (1.5mm)

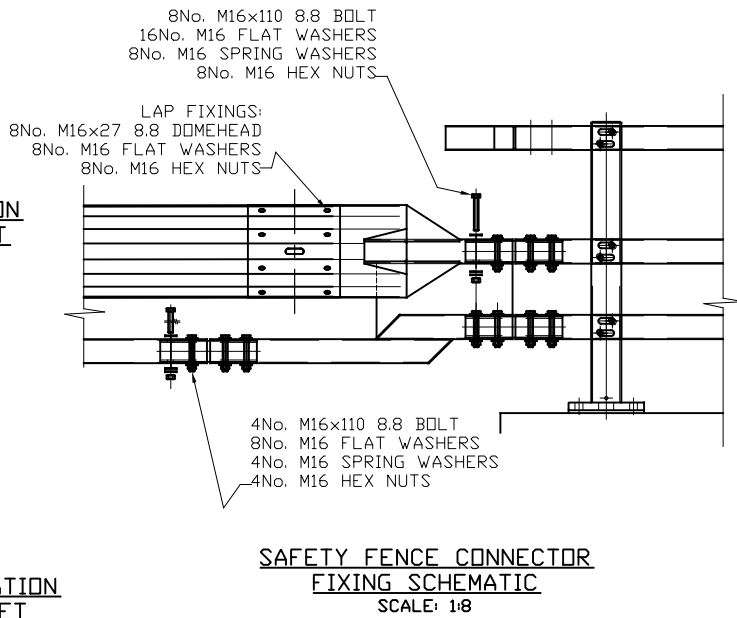
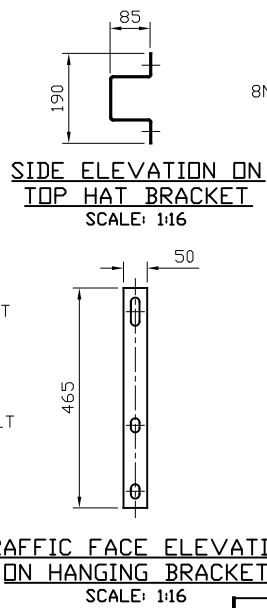
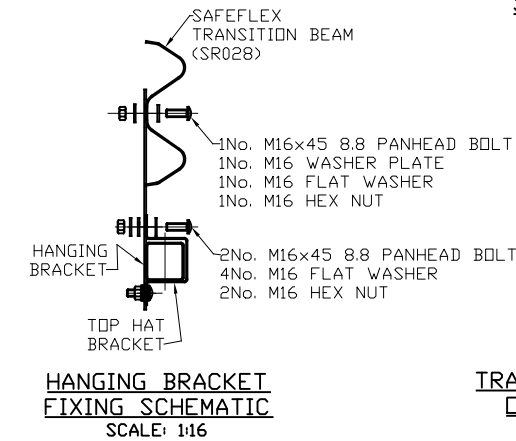
WELDING
SPECIFICATION

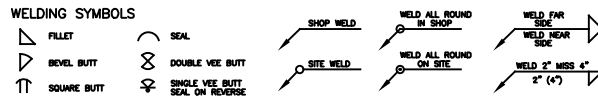
IF IN DOUBT, ASK.

DRAWING NOT TO BE SCALED.



HANGING BRACKETS INSTALLED IN POSITIONS SHOWN IN SECTION A-A





MACHINING NOTES

MACHINE WHERE MARKED BY
REMOVE SHARP EDGES
TOLERANCES UNLESS
STATED OTHERWISE
DIMENSIONAL $\pm 0.015(0.4\text{mm})$

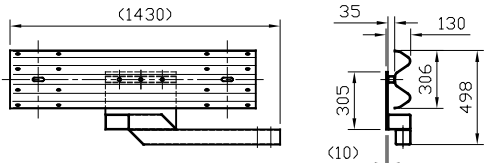
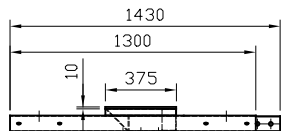
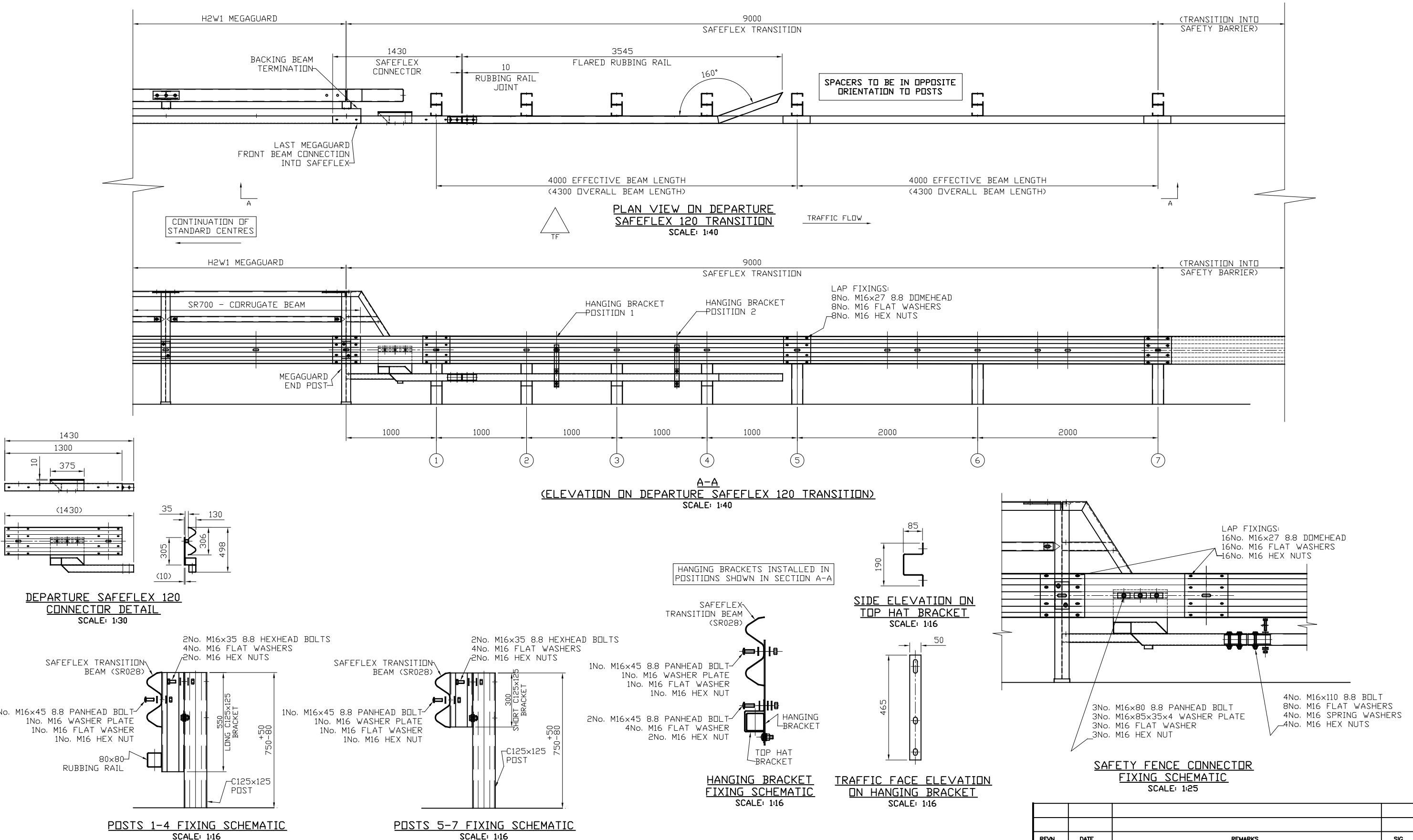
FABRICATION NOTES

TOLERANCES UNLESS
STATED OTHERWISE
 $\pm 0.062(1.5\text{mm})$

WELDING SPECIFICATION

IF IN DOUBT,ASK.

DRAWING NOT TO BE SCALED.



DEPARTURE SAFEFLEX 120
CONNECTOR DETAIL
SCALE: 1:30

