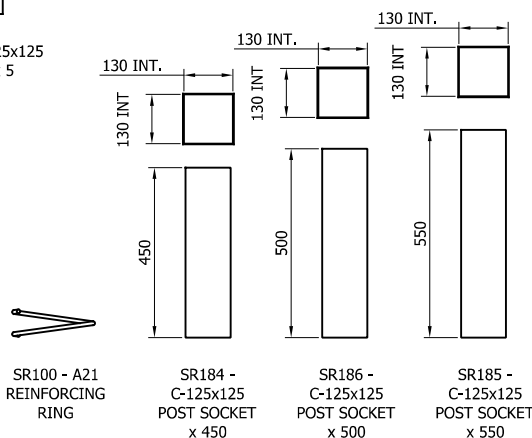


SR348 - "C" 125x125
2400mm x 5



04	08/12/23	PART NUMBERS UPDATED	H.B
03	11/09/23	WASHER PLATE CODE CHANGE	H.B
02	10/02/23	SMP DETAIL UPDATE	H.B
01	06/02/23	M12 BOLT DETAIL CHANGE	H.B
00	30/08/22	DRAWING CREATED	H.B
REVn	DATE	DETAILS	INITIAL

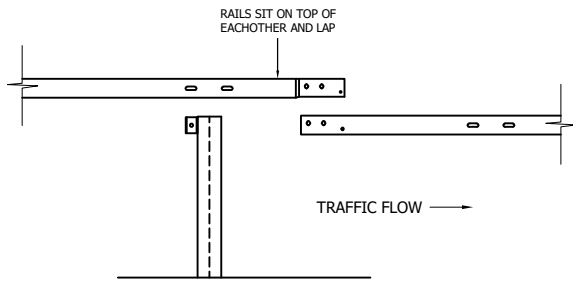
MEGARAIL xn N2W4

MEGARAIL xn VEHICLE RESTRAINT
SYSTEM COMPONENTS SCHEMATIC



CONCORD HOUSE,
BESSEMER WAY, SCUNTHORPE,
NORTH LINCOLNSHIRE, DN15 8XE
t: 01724 289119
FOR TECHNICAL ASSISTANCE CONTACT
john.cudlipp@saferoad.co.uk

DRAWING NUMBER:	REVn:
MR-xn-GA-00	04



EXPANSION ASSEMBLY TO BE INSTALLED EVERY 90M.
FIRST EXPANSION ASSEMBLY TO BE INSTALLED 45M
FROM ADJOINING SYSTEM OR TERMINAL

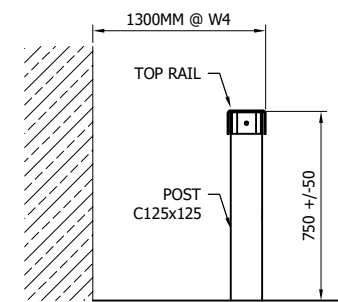
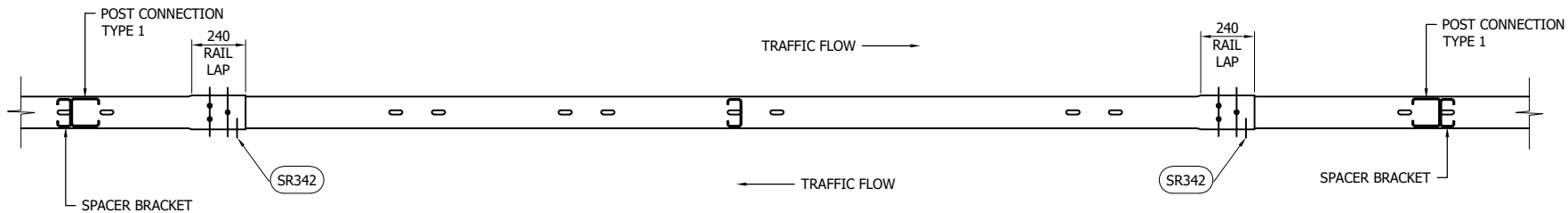
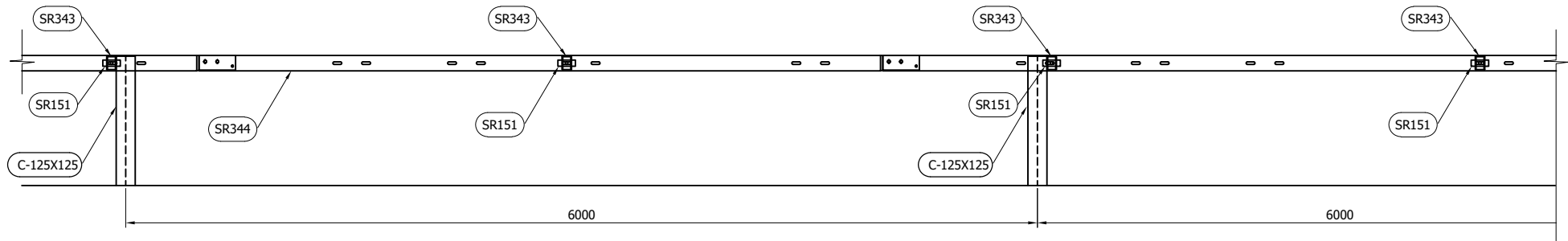


TABLE 'A' - SYSTEM COMPONENT SCHEDULE - QTY'S / 4.74m RAIL		
SAFEROAD PART NUMBER	DESCRIPTION	QUANTITY
SR344	TOP RAIL	1
SR343	C125x125 SPACER	2
SEE TABLE 'B'	POST "C" 125x125	1
SR151	M16x115x40x6 WASHER PLATE	2
FOR SCHEDULE OF BOLTED CONNECTIONS REFER TO DRAWING NUMBER MR-xn-GA-02		

TABLE 'B' - SCHEDULE OF POST REFERENCES	
SAFEROAD PART NUMBER	POST LENGTH
SR349	1200
SR345	1800
SR347	2000
SR348	2400

- GENERAL NOTES:
1. POST ORIENTATION TO BE FLIPPED EVERY 6M
 2. WHEN TYING INTO ADJACENT VRS ONLY ONE WORKING WIDTH DIFFERENCE IS PERMITTED.
 3. SEE MR-GA-001 & MR-GA-003 FOR DETAILS OF SYSTEM HEIGHTS WITH REFERENCE TO SETBACK & KERB HEIGHT.
 4. FOR MINIMUM LENGTH OF FULL HEIGHT VRS REFER TO SAFEROAD MEGARAIL MANUAL.
 5. SR342 TO BE PREDOMINANTLY INSTALLED IN ORIENTATION SHOWN ABOVE. SEE MR-xn-GA-02 FOR FURTHER DETAILS
 6. ON VERGE LOCATIONS, SR342 TO BE INSTALLED AT TRAFFIC FACE

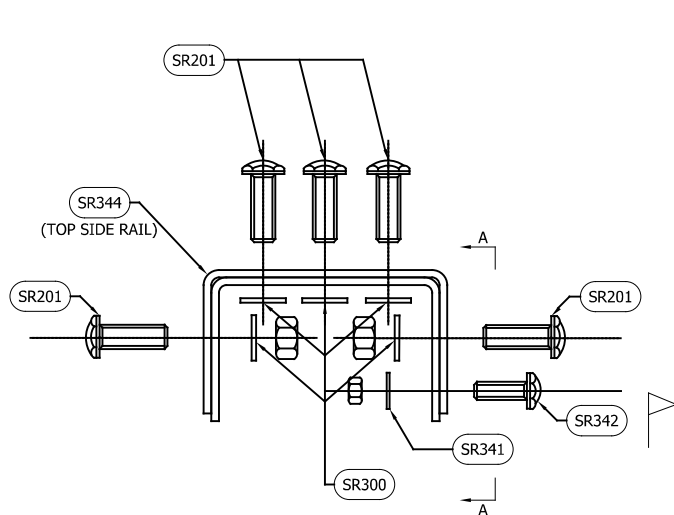
05	16/04/25	EXPANSION NOTE UPDATED	H.B
04	12/12/24	EXPANSION NOTE ADDED	H.B
03	08/12/23	PART NUMBERS UPDATED	H.B
02	11/09/23	WASHER PLATE CODE CHANGE	H.B
01	06/02/23	POST ORIENTATION DETAILS UPDATED	H.B
00	30/08/22	DRAWING CREATED	H.B
REVn	DATE	DETAILS	INITIAL

**MEGARAIL xn
N2W4**
MEGARAIL xn VEHICLE RESTRAINT
SYSTEM ASSEMBLY & SETTING OUT
ARRANGEMENT

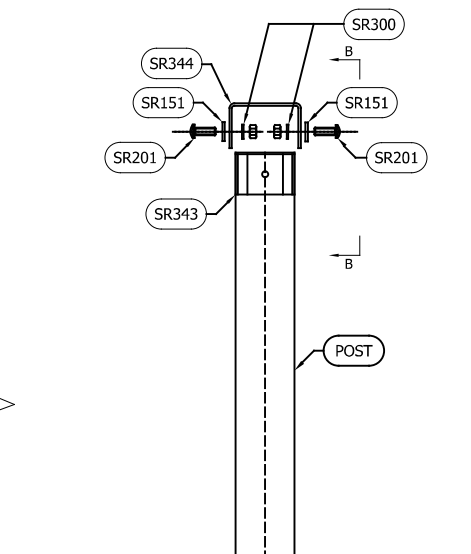


CONCORD HOUSE,
BESSEMER WAY, SCUNTHORPE,
NORTH LINCOLNSHIRE, DN15 8XE
t: 01724 289119
FOR TECHNICAL ASSISTANCE CONTACT
john.cudlipp@saferoad.co.uk

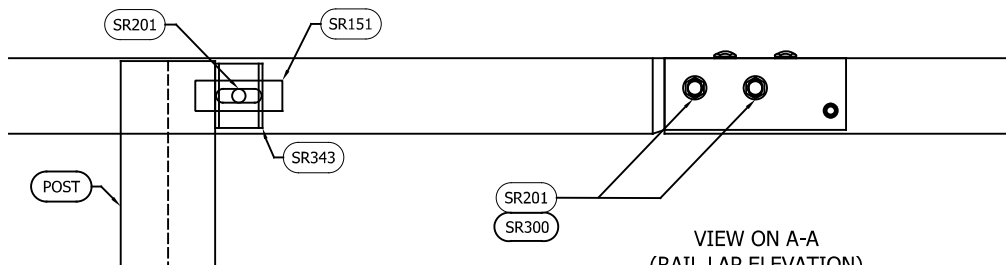
DRAWING NUMBER:	REVn:
MR-xn-GA-01	05



RAIL TO RAIL CONNECTION
ARRANGEMENT
CONNECTION TYPE 1



TOP RAIL TO POST
(THROUGH SPACER)
CONNECTION TYPE 2



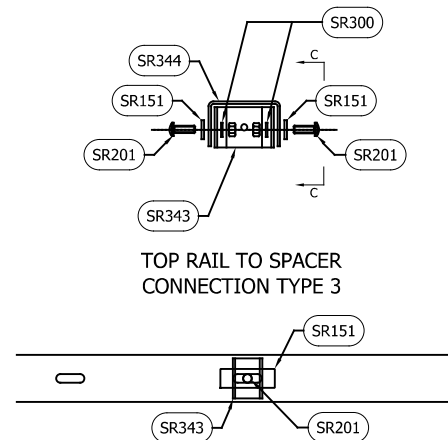
VIEW ON B-B
(TOP RAIL TO POST ELEVATION)
CONNECTION TYPE 2

VIEW ON A-A
(RAIL LAP ELEVATION)
CONNECTION TYPE 1

GENERAL NOTES:

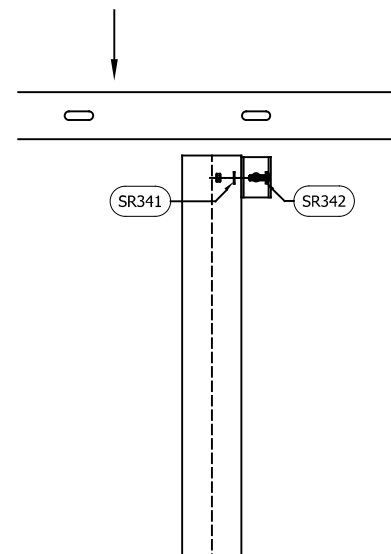
- NUMBERS IN THE SCHEDULES SUFFIXED (+) DENOTES THE ADDITIONAL QUANTITY OF COMPONENTS REQUIRED FOR EXTREME ENDS OF INDIVIDUAL RUNS OF BARRIER OR FOR NOTED PURPOSE.
- M12 BOLT INSTALLED ON SIDE WHERE RAIL LAP HAS TRAFFIC FLOWING TOWARDS UN-COVERED EXTREME EDGE OF TOP SIDE RAIL.
- ON VERGE LOCATIONS, SR342 TO BE INSTALLED AT TRAFFIC FACE.

BOLTING COMPONENT SCHEDULE - QTY'S / RAIL TO RAIL CONNECTION - CONNECTION TYPE 1 (1No. P/RAIL)		
SAFEROAD PART NUMBER	DESCRIPTION	RAIL TO RAIL CONNECTION
SR201	SETSCREW 8.8 M16 x 45 c/w NUT	7
SR300	M16 WASHER 18Ø HOLE	7
SR342	SETSCREW 8.8 M12 x 35 c/w NUT	1 (+1)
SR341	M12 WASHER 13.5Ø HOLE	1 (+1)



TOP RAIL TO SPACER
CONNECTION TYPE 3

VIEW ON C-C
(ELEVATION ON MID-RAIL
SPACER)



POST SPACER TO POST
(VIEW AT TRAFFIC FACE)
CONNECTION TYPE 4

BOLTING COMPONENT SCHEDULE - QTY'S / RAIL TO POST CONNECTION - CONNECTION TYPE 2		
SAFEROAD PART NUMBER	DESCRIPTION	RAIL TO POST CONNECTION
SR201	SETSCREW 8.8 M16 x 45 c/w NUT	2
SR151	WASHER PLATE 115 x 40 x 6 DIA. 18	2
SR300	M16 WASHER 18Ø HOLE	2

BOLTING COMPONENT SCHEDULE - QTY'S / RAIL TO SPACER (MID RAIL) - CONNECTION TYPE 3		
SAFEROAD PART NUMBER	DESCRIPTION	RAIL TO POST CONNECTION
SR201	SETSCREW 8.8 M16 x 45 c/w NUT	2
SR151	WASHER PLATE 115 x 40 x 6 DIA. 18	2
SR300	M16 WASHER 18Ø HOLE	2

BOLTING COMPONENT SCHEDULE - QTY'S / POST SPACER TO POST - CONNECTION TYPE 4 (1No. P/POST)		
SAFEROAD PART NUMBER	DESCRIPTION	RAIL JOINT CONNECTION
SR342	SETSCREW 8.8 M12 x 35 c/w NUT	1
SR341	M12 WASHER 13.5Ø HOLE	1

04	08/12/23	PART NUMBERS UPDATED	H.B
03	11/09/23	WASHER PLATE CODE CHANGE	H.B
02	19/05/23	NOTE REMOVED	H.B
01	06/02/23	FIXING DETAILS UPDATED	H.B
00	30/08/22	DRAWING CREATED	H.B
REVn	DATE	DETAILS	INITIAL

MEGARAIL xn N2W4

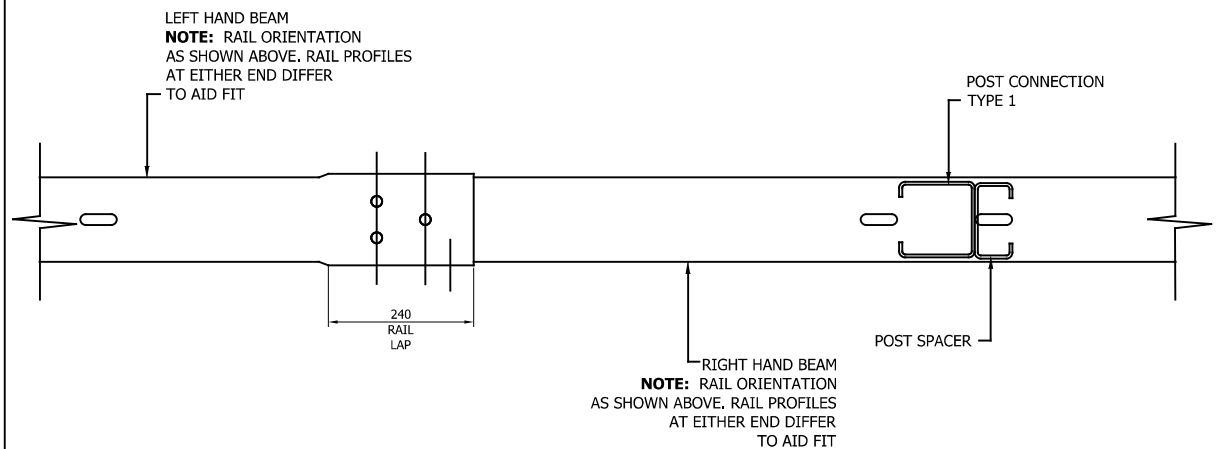
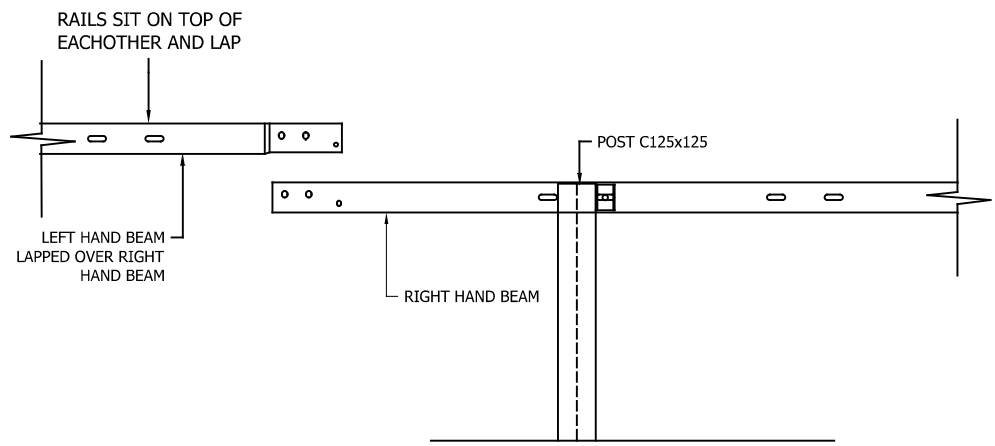
MEGARAIL xn VEHICLE RESTRAINT
SYSTEM BOLTING ARRANGEMENTS



CONCORD HOUSE,
BESSEMER WAY, SCUNTHORPE,
NORTH LINCOLNSHIRE, DN15 8XE
t: 01724 289119
FOR TECHNICAL ASSISTANCE CONTACT
john.cudlipp@saferoad.co.uk

DRAWING NUMBER:	REVn:
MR-xn-GA-02	04

- GENERAL NOTES:
1. POST ORIENTATION TO BE FLIPPED EVERY 6M



REVn	DATE	DETAILS	INITIAL
02	08/12/23	LOGO UPDATED	H.B
01	06/02/23	HIDDEN DETAIL REMOVED	H.B
00	30/08/22	DRAWING CREATED	H.B

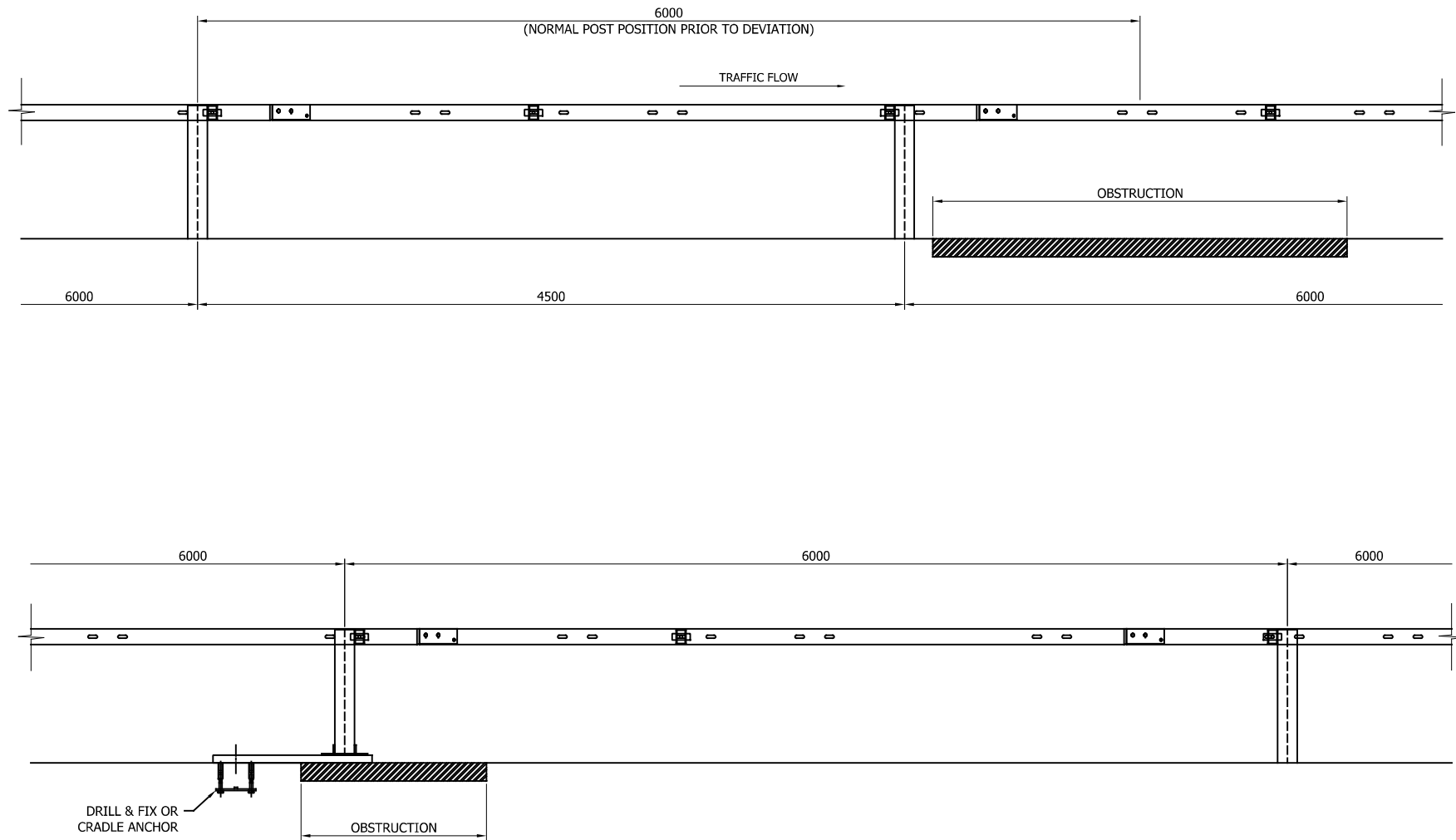
MEGARAIL xn N2W4

MEGARAIL xn VEHICLE RESTRAINT
SYSTEM RAIL LAPPING DETAIL FOR
N2 MEGARAIL SYSTEM



CONCORD HOUSE,
BESSEMER WAY, SCUNTHORPE,
NORTH LINCOLNSHIRE, DN15 8XE
t: 01724 289119
FOR TECHNICAL ASSISTANCE CONTACT
john.cudlipp@saferoad.co.uk

DRAWING NUMBER:	REVn:
MR-xn-GA-03	02



GENERAL NOTES:

1. IF THE SITE CONDITIONS DO NOT ALLOW A POST TO BE INSTALLED ON THE SYSTEM PITCH DEVIATIONS CAN BE APPLIED. THE OBSTRUCTED POST CAN BE LEFT OUT AND EXTRA POSTS INSTALLED TO SPAN THE OBSTRUCTION. THE NEW POST SPACING MUST NOT EXCEED 6000mm. ALTHOUGH IT WOULD BE BENEFICIAL TO USE THE HOLES ALREADY IN THE BEAM IT IS ACCEPTABLE TO DRILL NEW HOLES IN THE DESIRED POSITIONS AND TREAT WITH ZINC RICH PAINT.
2. OFFSET POSTS SHOWN ON DRAWING MR-xn-GA-00 CAN BE USED.

REVn	DATE	DETAILS	INITIAL
03	08/12/23	LOGO UPDATED	H.B
02	05/07/23	DETAILS UPDATED	H.B
01	10/02/23	SMP DETAIL UPDATE	H.B
00	30/08/22	DRAWING CREATED	H.B

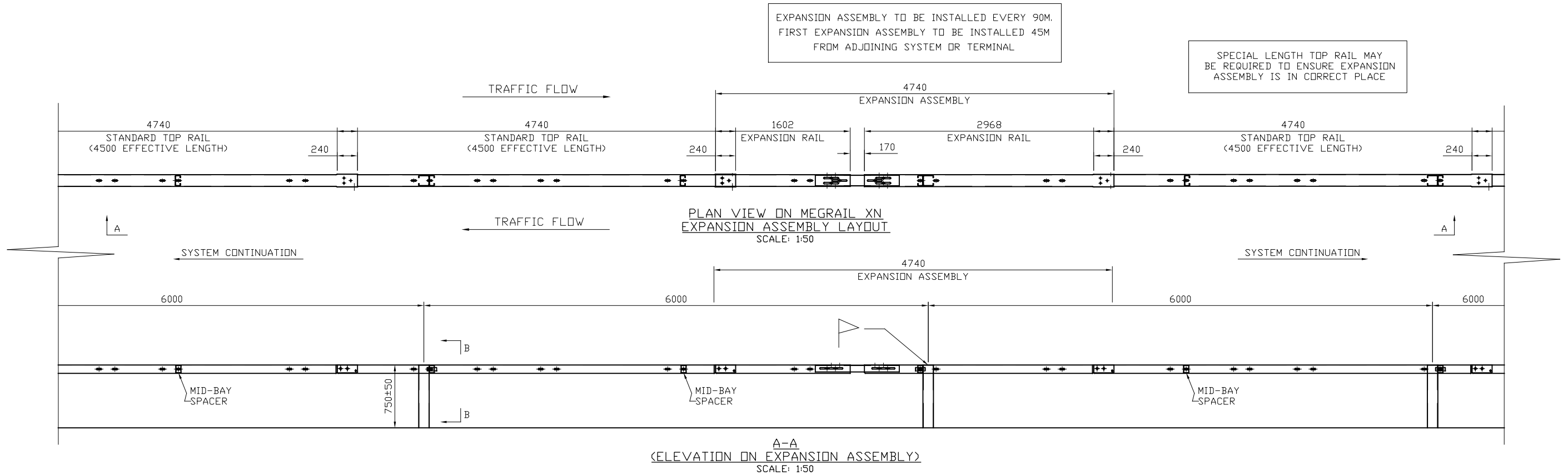
MEGARAIL xn N2W4

MEGARAIL xn VEHICLE RESTRAINT
SYSTEM
DEVIATION SETTING OUT
ARRANGEMENT



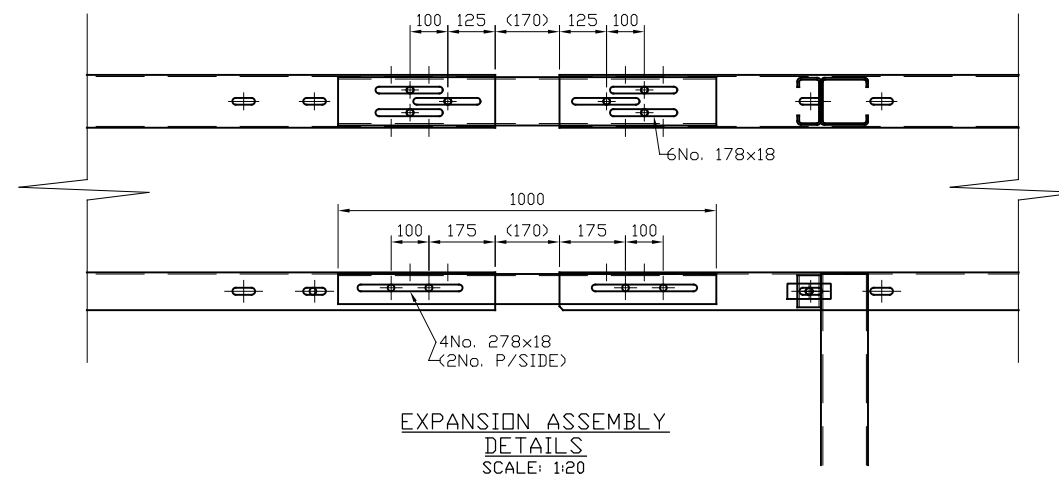
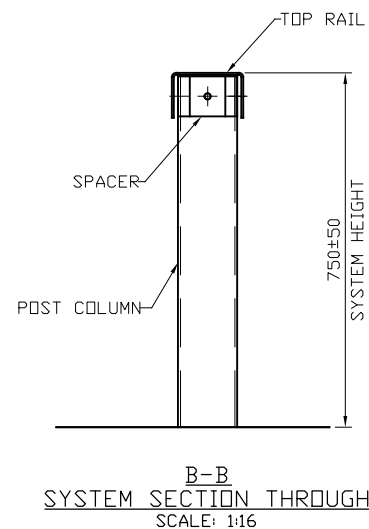
CONCORD HOUSE,
BESSEMER WAY, SCUNTHORPE,
NORTH LINCOLNSHIRE, DN15 8XE
t: 01724 289119
FOR TECHNICAL ASSISTANCE CONTACT
john.cudlipp@saferoad.co.uk

DRAWING NUMBER:	REVn:
MR-xn-GA-40	03



GENERAL NOTES:

- ALL DIMENSIONS IN MILLIMETRES UNLESS NOTED OTHERWISE.
- FOR GENERAL DETAILS REGARDING MEGARAIL XN, SEE SYSTEM MANUAL DRAWINGS
- FOR MINIMUM LENGTH OF FULL HEIGHT VRS, REFER TO SAFEROAD MEGARAIL MANUAL
- SPECIAL LENGTH TOP RAIL MAY BE REQUIRED TO ENSURE EXPANSION ASSEMBLY IS INSTALLED IN THE CORRECT PLACE.
- EXPANSION ASSEMBLY TO BE INSTALLED EVERY 90M. FIRST EXPANSION ASSEMBLY 45M FROM ADJOINING SYSTEM OR TERMINAL
- POST ORIENTATION REVERSED ON EVERY OTHER POST



MEGARAIL XN N2W4

GENERAL ARRANGEMENT DETAILS
FOR EXPANSION ASSEMBLY



CONCORD HOUSE,
BESSEMER WAY, SCUNTHORPE,
NORTH LINCOLNSHIRE, DN15 8XE
T: 01724 289119
FOR TECHNICAL ASSISTANCE CONTACT
john.cudlipp@saferoad.co.uk

DRAWING NUMBER: MR-XN-GA-41
REVn: 02

REVn	DATE	DETAILS	INITIAL
02	16/04/25	EXPANSION NOTE UPDATED	H.B
01	17/11/23	LOGO UPDATED	H.B
00	22.03.23	DRAWING CREATED	H.B

EXPANSION ASSEMBLY MUST FALL ON 1No. POST
POSITION