

09	17/11/23	PART NUMBERS UPDATED	H,B
08	11/09/23	WASHER PLATE CODE CHANGE	H,B
07	18/05/23	VI RATING ADDED TO TITLE	H,B
06	10/02/23	SMP DETAIL UPDATED	H,B
05	06/02/23	M12 BOLT DETAIL CHANGE	H,B
04	05/09/22	REBRANDED TO MEGARAIL	H,B
03	21/07/22	POST HEIGHT UPDATE	H,B
02	20/01/22	DETAILS UPDATED	H,B
01	16/12/21	DETAILS UPDATED	H,B
00	17/09/20	DRAWING CREATED	H,B
REVn	DATE	DETAILS	INITIAL

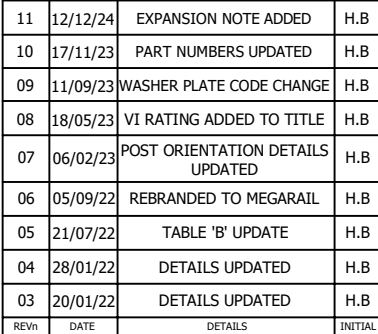
## MEGARAIL xo L1/H1W4 & N2W3 VI5

MEGARAIL xo VEHICLE RESTRAINT  
SYSTEM COMPONENTS SCHEMATIC

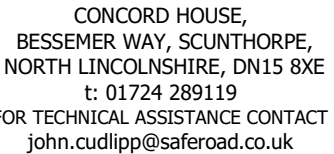


CONCORD HOUSE,  
BESSEMER WAY, SCUNTHORPE,  
NORTH LINCOLNSHIRE, DN15 8XE  
t: 01724 289119  
FOR TECHNICAL ASSISTANCE CONTACT  
john.cudlipp@saferoad.co.uk

DRAWING NUMBER:	REVn:
MR-xo-GA-00	09



## MEGARAIL xo VEHICLE RESTRAINT SYSTEM ASSEMBLY & SETTING OUT ARRANGEMENT

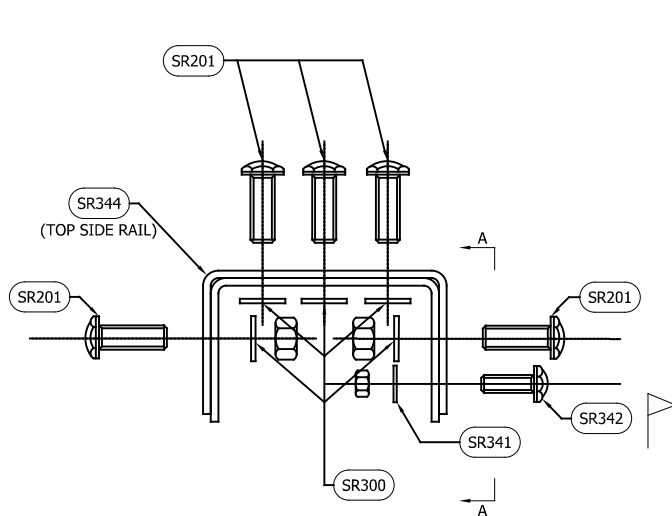


MR-xo-GA-01	11
-------------	----

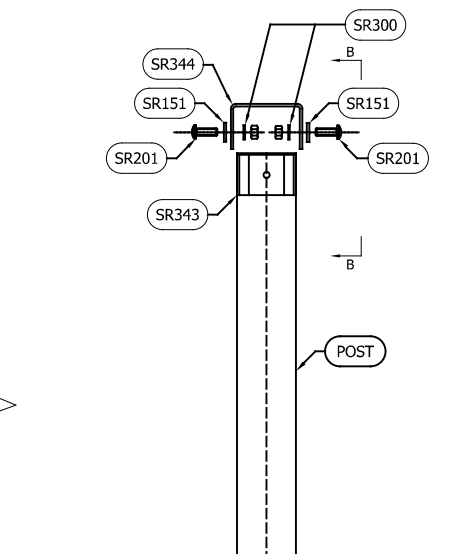
SAFEROAD PART NUMBER	DESCRIPTION	QUANTITY
SR344	TOP RAIL	1
SR343	C125x125 SPACER	2
SEE TABLE 'B'	POST "C" 125x125	1
SR151	M16x115x40x6 WASHER PLATE	2
FOR SCHEDULE OF BOLTED CONNECTIONS REFER TO DRAWING NUMBER MR-xo-GA-02		

SAFEROAD PART NUMBER	POST LENGTH
SR349	1200
SR345	1800
SR347	2000
SR348	2400

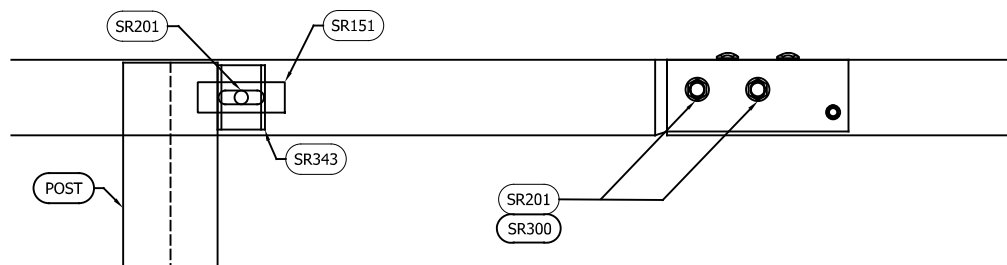
1. POST ORIENTATION TO BE FLIPPED EVERY 4.5M
2. WHEN TYING INTO ADJACENT VRS ONLY ONE WORKING WIDTH DIFFERENCE IS PERMITTED
3. SEE MR-GA-001 & MR-GA-003 FOR DETAILS OF SYSTEM HEIGHT WITH REFERENCE TO SETBACK & KERB HEIGHT
4. FOR MINIMUM LENGTH OF FULL HEIGHT VRS REFER TO SAFEROAD MEGARAIL MANUAL.
5. SR342 TO BE PREDOMINANTLY INSTALLED IN ORIENTATION SHOWN ABOVE. SEE MR-xo-GA-02 FOR FURTHER DETAILS
6. ON VERGE LOCATIONS, SR342 TO BE INSTALLED AT TRAFFIC FACE.



RAIL TO RAIL CONNECTION  
ARRANGEMENT  
CONNECTION TYPE 1



TOP RAIL TO POST  
(THROUGH SPACER)  
CONNECTION TYPE 2



VIEW ON B-B  
(TOP RAIL TO POST ELEVATION)  
CONNECTION TYPE 2



VIEW ON A-A  
(RAIL LAP ELEVATION)  
CONNECTION TYPE 1

#### GENERAL NOTES:

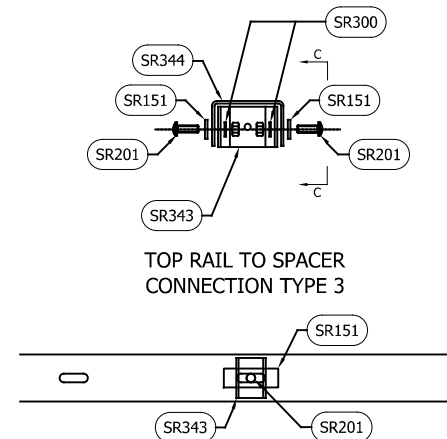
- NUMBERS IN THE SCHEDULES SUFFIXED (+) DENOTES THE ADDITIONAL QUANTITY OF COMPONENTS REQUIRED FOR EXTREME ENDS OF INDIVIDUAL RUNS OF BARRIER OR FOR NOTED PURPOSE.
- M12 BOLT INSTALLED ON SIDE WHERE RAIL LAP HAS TRAFFIC FLOWING TOWARDS UN-COVERED EXTREME EDGE OF TOP SIDE RAIL.
- ON VERGE LOCATIONS, SR342 TO BE INSTALLED AT TRAFFIC FACE.

BOLTING COMPONENT SCHEDULE - QTY'S / RAIL TO RAIL CONNECTION - CONNECTION TYPE 1 (1No. P/RAIL)		
SAFEROAD PART NUMBER	DESCRIPTION	RAIL TO RAIL CONNECTION
SR201	SETSCREW 8.8 M16 x 45 c/w NUT	7
SR300	M16 WASHER 18Ø HOLE	7
SR342	SETSCREW 8.8 M12 x 35 c/w NUT	1 (+1)
SR341	M12 WASHER 13.5Ø HOLE	1 (+1)

BOLTING COMPONENT SCHEDULE - QTY'S / RAIL TO POST CONNECTION - CONNECTION TYPE 2 (1No. P/4.5M)		
SAFEROAD PART NUMBER	DESCRIPTION	RAIL TO POST CONNECTION
SR201	SETSCREW 8.8 M16 x 45 c/w NUT	2
SR151	WASHER PLATE 115 x 40 x 6 DIA. 18	2
SR300	M16 WASHER 18Ø HOLE	2

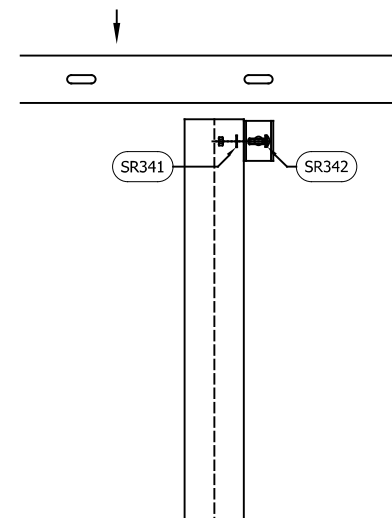
BOLTING COMPONENT SCHEDULE - QTY'S / RAIL TO SPACER (MID RAIL) - CONNECTION TYPE 3 (1No. P/4.5M)		
SAFEROAD PART NUMBER	DESCRIPTION	RAIL TO POST CONNECTION
SR201	SETSCREW 8.8 M16 x 45 c/w NUT	2
SR151	WASHER PLATE 115 x 40 x 6 DIA. 18	2
SR300	M16 WASHER 18Ø HOLE	2

BOLTING COMPONENT SCHEDULE - QTY'S / POST SPACER TO POST - CONNECTION TYPE 4 (1No. P/POST)		
SAFEROAD PART NUMBER	DESCRIPTION	RAIL JOINT CONNECTION
SR342	SETSCREW 8.8 M12 x 35 c/w NUT	1
SR341	M12 WASHER 13.5Ø HOLE	1



TOP RAIL TO SPACER  
CONNECTION TYPE 3

VIEW ON C-C  
(ELEVATION ON MID-RAIL  
SPACER)



POST SPACER TO POST  
(VIEW AT TRAFFIC FACE)  
CONNECTION TYPE 4

REVn	DATE	DETAILS	INITIAL
09	17/11/23	PART NUMBERS UPDATED	H.B
08	11/09/23	WASHER PLATE CODE CHANGE	H.B
07	18/05/23	VI RATING ADDED TO TITLE	H.B
06	06/02/23	FIXING DETAILS UPDATED	H.B
05	05/09/22	REBRANDED TO MEGARAIL	H.B
04	28/01/22	DETAILS UPDATED	H.B
03	20/01/22	DETAILS UPDATED	H.B
02	09/12/21	DETAILS UPDATED	H.B

## MEGARAIL xo L1/H1W4 & N2W3 VI5

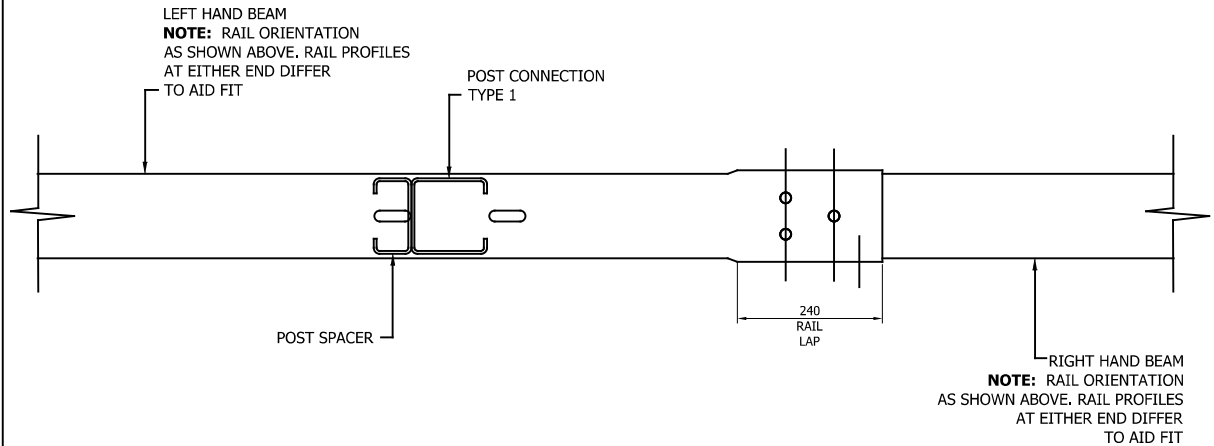
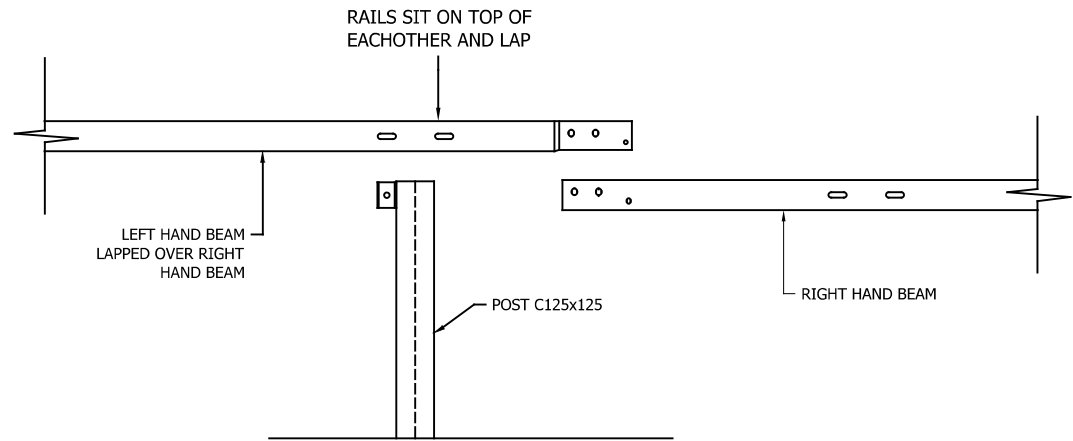
MEGARAIL xo VEHICLE RESTRAINT  
SYSTEM BOLTING ARRANGEMENTS



CONCORD HOUSE,  
BESSEMER WAY, SCUNTHORPE,  
NORTH LINCOLNSHIRE, DN15 8XE  
t: 01724 289119  
FOR TECHNICAL ASSISTANCE CONTACT  
john.cudlipp@saferoad.co.uk

DRAWING NUMBER:	REVn:
MR-xo-GA-02	09

GENERAL NOTES:  
1. POST ORIENTATION TO BE FLIPPED EVERY 4.5M



07	17/11/23	LOGO UPDATED	H.B
06	18/05/23	VI RATING ADDED TO TITLE	H.B
05	06/02/23	HIDDEN DETAIL REMOVED	H.B
04	05/09/22	REBRANDED TO MEGARAIL	H.B
03	28/01/22	DETAILS UPDATED	H.B
02	20/01/22	DETAILS UPDATED	H.B
01	16/12/21	DETAILS UPDATED	H.B
00	17/09/20	DRAWING CREATED	H.B
REVn	DATE	DETAILS	INITIAL

## MEGARAIL xo L1/H1W4 & N2W3 VI5

MEGARAIL xo VEHICLE RESTRAINT  
SYSTEM RAIL LAPPING DETAIL FOR  
H1 & N2 MEGARAIL SYSTEM



CONCORD HOUSE,  
BESSEMER WAY, SCUNTHORPE,  
NORTH LINCOLNSHIRE, DN15 8XE  
t: 01724 289119  
FOR TECHNICAL ASSISTANCE CONTACT  
john.cudlipp@saferoad.co.uk

DRAWING NUMBER:	REVn:
MR-xo-GA-03	07

ENSURE STIFFENER & WASHER  
PLATE CENTRAL TO POST SPACING

ENSURE STIFFENER & WASHER  
PLATE CENTRAL TO POST SPACING

OBSTRUCTION

4500

2250

4500

ENSURE STIFFENER & WASHER  
PLATE CENTRAL TO POST SPACING

DRILL &  
FIX OR  
PUSHED IN  
ANCHOR

4500

OBSTRUCTION

4500

PUSHED IN  
CRADLE  
ANCHOR

4500

#### GENERAL NOTES:

1. IF THE SITE CONDITIONS DO NOT ALLOW A POST TO BE INSTALLED ON THE SYSTEM PITCH DEVIATIONS CAN BE APPLIED. THE OBSTRUCTED POST CAN BE LEFT OUT AND EXTRA POSTS INSTALLED TO SPAN THE OBSTRUCTION. THE NEW POST SPACING MUST NOT EXCEED 4500mm AND MUST NOT BE LESS THAN 2250mm. ALTHOUGH IT WOULD BE BENEFICIAL TO USE THE HOLES ALREADY IN THE BEAM IT IS ACCEPTABLE TO DRILL NEW HOLES IN THE DESIRED POSITIONS AND TREAT WITH ZINC RICH PAINT.
2. OFFSET POSTS SHOWN ON DRAWING MR-xo-GA-00 CAN BE USED.

08	17/11/23	LOGO UPDATED	H.B
07	18/05/23	VI RATING ADDED TO TITLE	H.B
06	10/02/23	SMP DETAIL UPDATE	H.B
05	05/09/22	REBRANDED TO MEGARAIL	H.B
04	28/01/22	DETAILS UPDATED	H.B
03	20/01/22	DETAILS UPDATED	H.B
02	16/12/21	DETAILS UPDATED	H.B
01	05/01/21	DETAILS ADDED	M.T
00	17/09/20	DRAWING CREATED	H.B
REVn	DATE	DETAILS	INITIAL

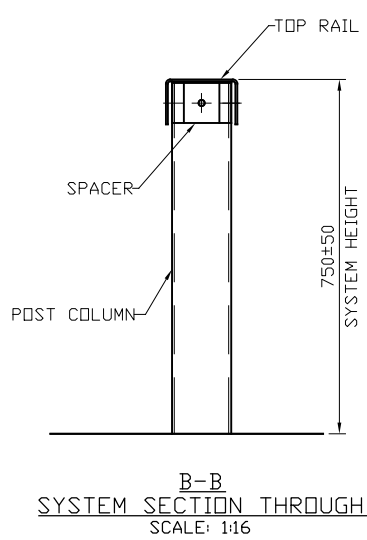
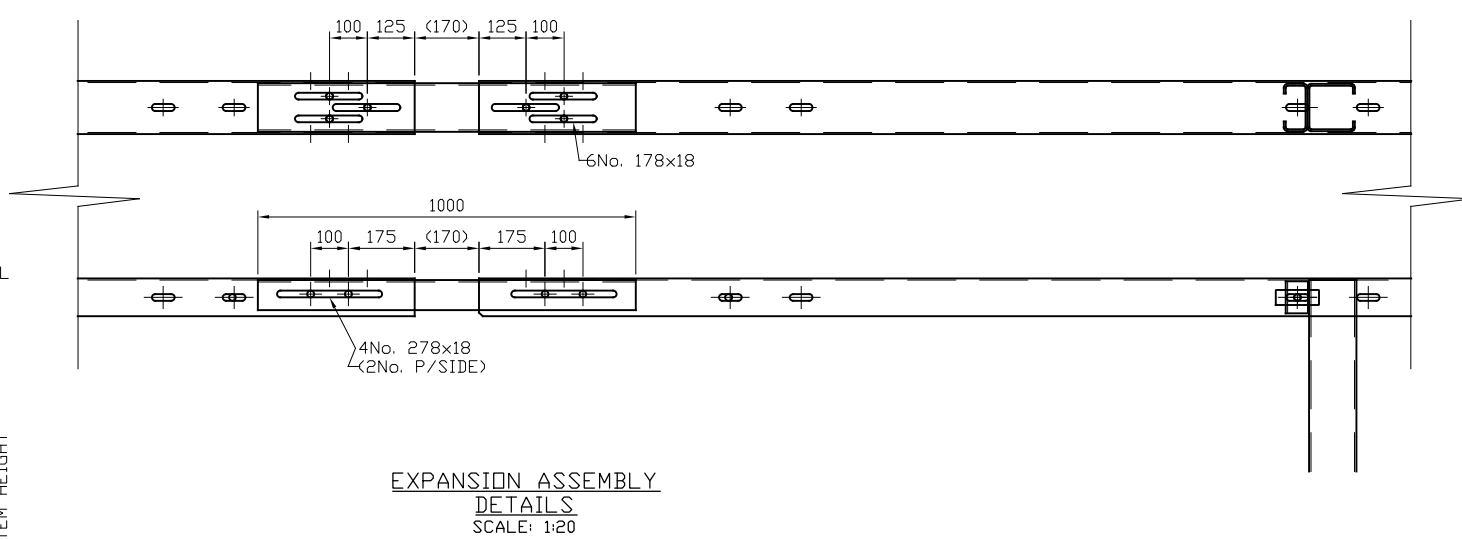
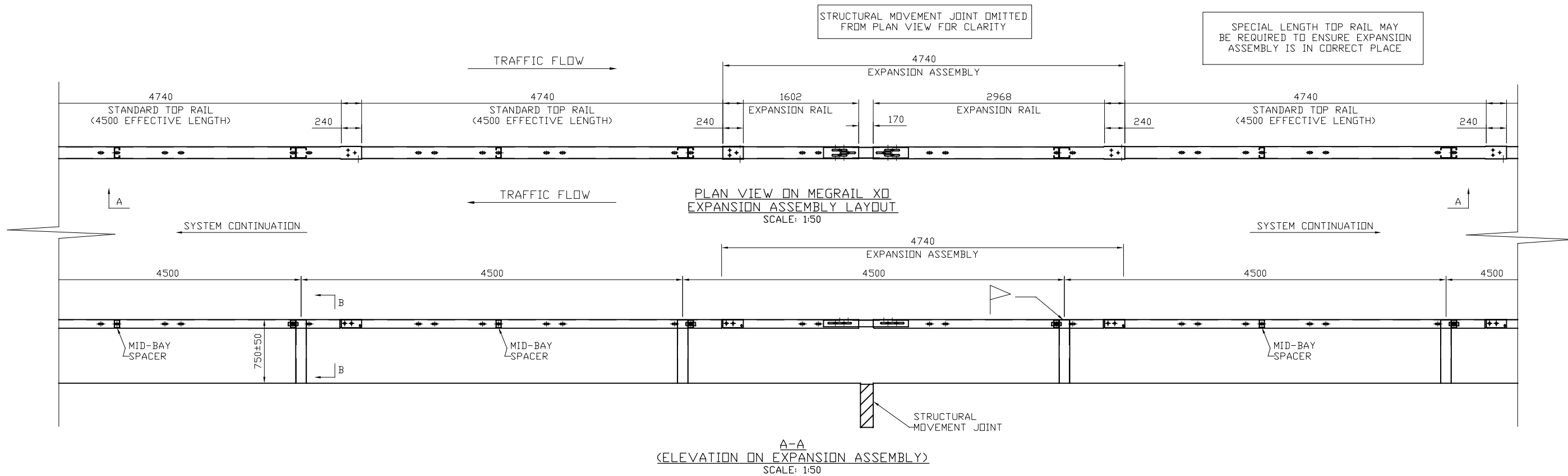
## MEGARAIL xo L1/H1W4 & N2W3 VI5

MEGARAIL xo VEHICLE RESTRAINT  
SYSTEM  
DEVIATION SETTING OUT  
ARRANGEMENT



CONCORD HOUSE,  
BESSEMER WAY, SCUNTHORPE,  
NORTH LINCOLNSHIRE, DN15 8XE  
t: 01724 289119  
FOR TECHNICAL ASSISTANCE CONTACT  
john.cudlipp@saferoad.co.uk

DRAWING NUMBER:	REVn:
MR-xo-GA-40	08



### GENERAL NOTES;

1. ALL DIMENSIONS IN MILLIMETRES UNLESS NOTED OTHERWISE.
2. FOR GENERAL DETAILS REGARDING MEGARAIL XO, SEE SYSTEM MANUAL DRAWINGS
3. FOR MINIMUM LENGTH OF FULL HEIGHT VRS, REFER TO SAFEROAD MEGARAIL MANUAL
4. SPECIAL LENGTH TOP RAIL MAY BE REQUIRED TO ENSURE EXPANSION ASSEMBLY IS INSTALLED IN THE CORRECT PLACE.
5. POST ORIENTATION REVERSED ON EVERY OTHER POST

EXPANSION ASSEMBLY MUST FALL ON 1No. POST POSITION

## MEGARAIL XO L1/H1W4 & N2W3 VI5

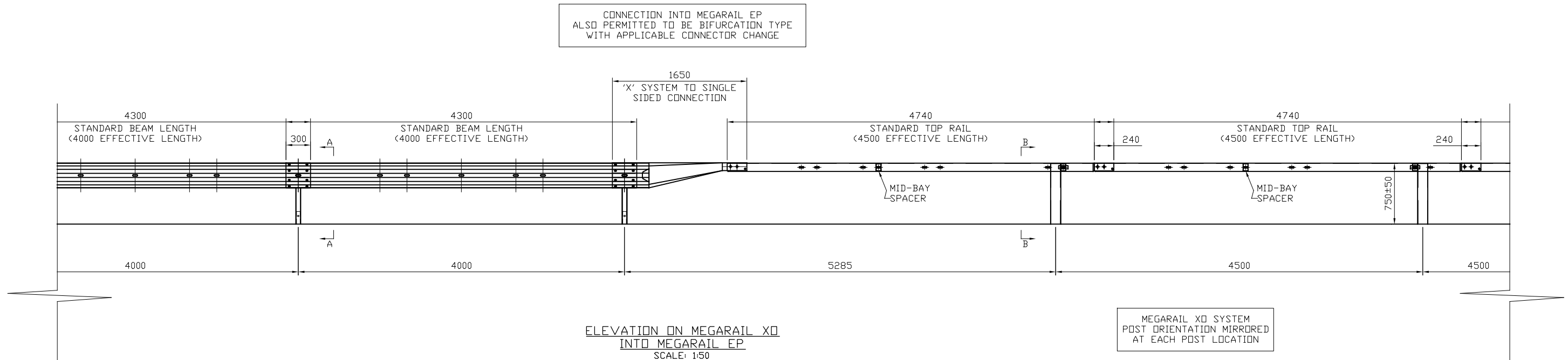
GENERAL ARRANGEMENT DETAILS  
FOR EXPANSION ASSEMBLY



CONCORD HOUSE,  
BESSEMER WAY, SCUNTHORPE,  
NORTH LINCOLNSHIRE, DN15 8XE  
T: 01724 289119  
FOR TECHNICAL ASSISTANCE CONTACT  
john.cudlipp@saferoad.co.uk

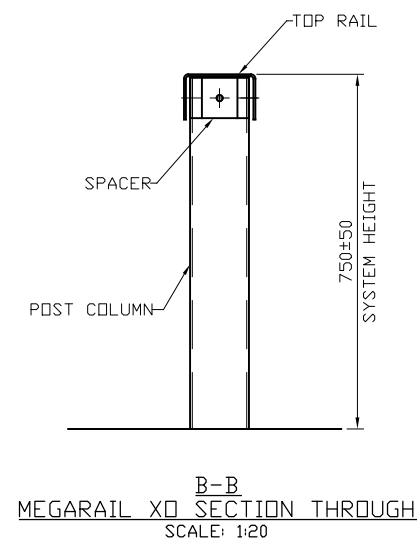
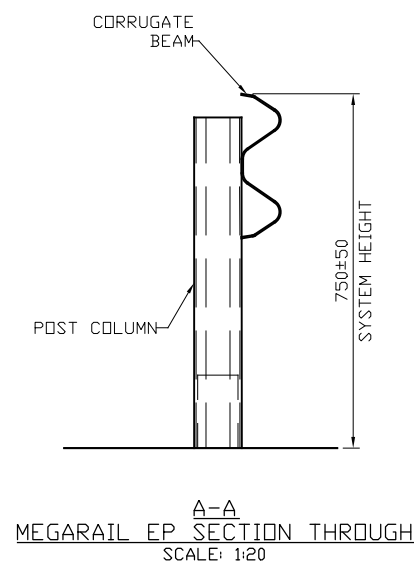
01	17/11/23	LOGO UPDATED	H.B
00	22.03.23	DRAWING CREATED	H.B
REVn	DATE	DETAILS	INITIAL

DRAWING NUMBER:	REVn:
MR-XO-GA-41	01



#### GENERAL NOTES;

1. ALL DIMENSIONS IN MILLIMETRES UNLESS NOTED OTHERWISE.
2. FOR GENERAL DETAILS REGARDING MEGARAIL XO, SEE SYSTEM MANUAL DRAWINGS
3. FOR GENERAL DETAILS REGARDING MEGARAIL EP, SEE SYSTEM MANUAL DRAWINGS
4. FOR MINIMUM LENGTH OF FULL HEIGHT VRS, REFER TO SAFEROAD MEGARAIL MANUAL
5. FOR MEGARAIL 'X' SYSTEMS, POST ORIENTATION MIRRORED AT EACH POST LOCATION



## MEGARAIL XO L1/H1W4 & N2W3 VI5

SINGLE SIDED OR BIFURCATION  
CONNECTION MEGARAIL EP N2W2



CONCORD HOUSE,  
BESSEMER WAY, SCUNTHORPE,  
NORTH LINCOLNSHIRE, DN15 8XE  
T: 01724 289119  
FOR TECHNICAL ASSISTANCE CONTACT  
john.cudlipp@saferoad.co.uk

01	17/11/23	LOGO UPDATED	H.B
00	17.05.23	DRAWING CREATED	H.B
REVn	DATE	DETAILS	INITIAL

DRAWING NUMBER:	REVn:
MR-XO-GA-42	01