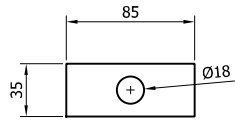
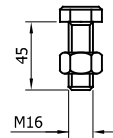


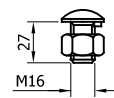
SR000 - "A" PROFILE BEAM 4.3m x 2.5mm THK



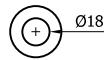
SR155 - WASHER PLATE
85 x 35 x 4 DIA. 18



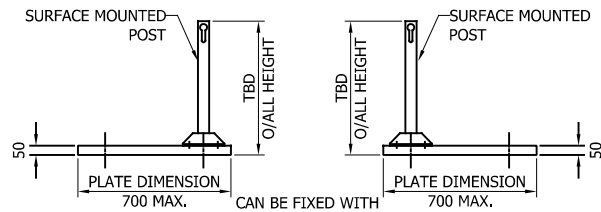
SR201 - SETSCREW 8.8
M16x45 c/w NUT



SR200 - SETSCREW 4.6
LIP M16x27 c/w NUT



SR300 - WASHER
18

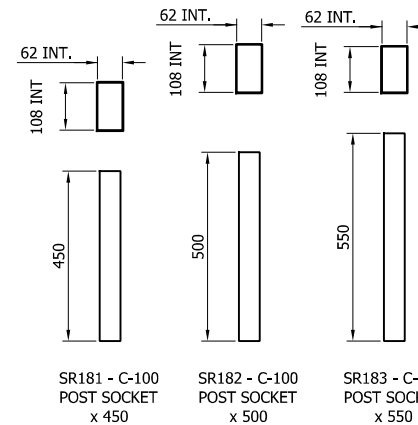
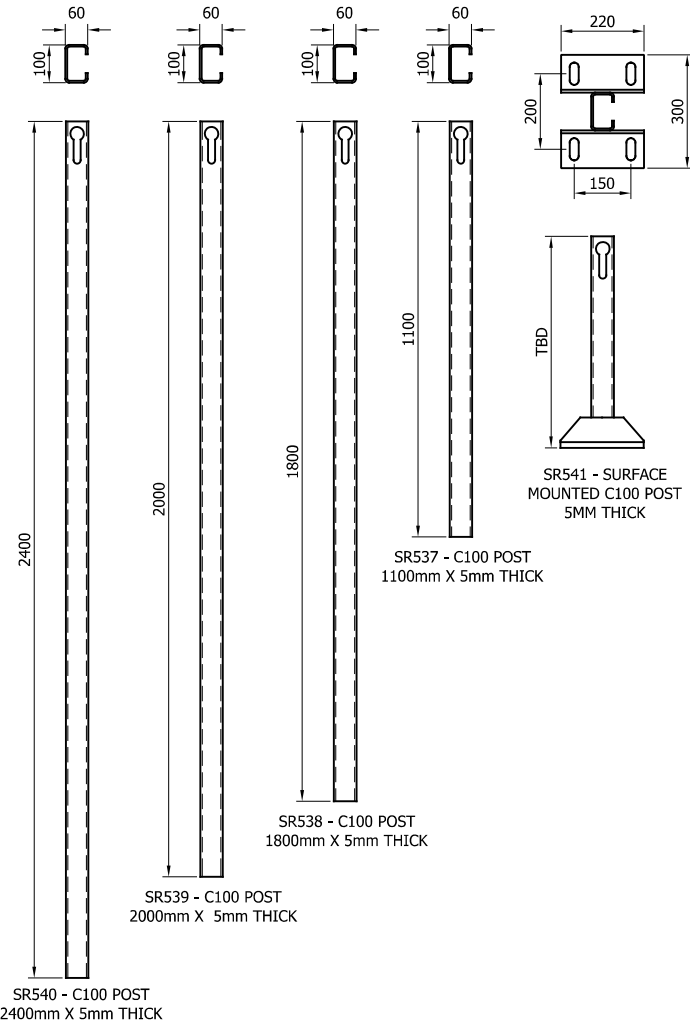


CAN BE FIXED WITH
CAST IN ANCHORS, DRILL
AND FIX ANCHORS OR
PUSHED IN ANCHORS
AT 180x180 CENTERS



*BASEPLATE DRILL
& TAPPED FOR
LIFTING EYE

4x M20 THREADED HOLES



SR100 - A21
REINFORCING
RING

11	21/03/24	POST TYPE CHANGE	H.B
10	20/06/23	SOCKET SIZE CHANGED	A.D
09	21/07/22	SOCKET SIZE CHANGED	A.D
08	27/06/22	SURFACE MOUNTED POST HEIGHT CHANGED	A.D
07	13/05/22	SURFACE MOUNTED POST BASE CHANGED	A.D
06	19/01/22	STIFFENER ADDED SMP	A.D
05	27/05/21	DETAILS REVISED	M.T
04	12/02/19	TITLEBLOCK REVISED	H.B
03	26.11.18	BASEPLATE DETAIL REVISED	H.B
02	06/06/18	BEAM TYPE ADDED	H.B
01	20/04/17	BEAM TYPE REVISED	M.T
00	13/02/17	DRAWING CREATED	L.L
REVn	DATE	DETAILS	INITIAL

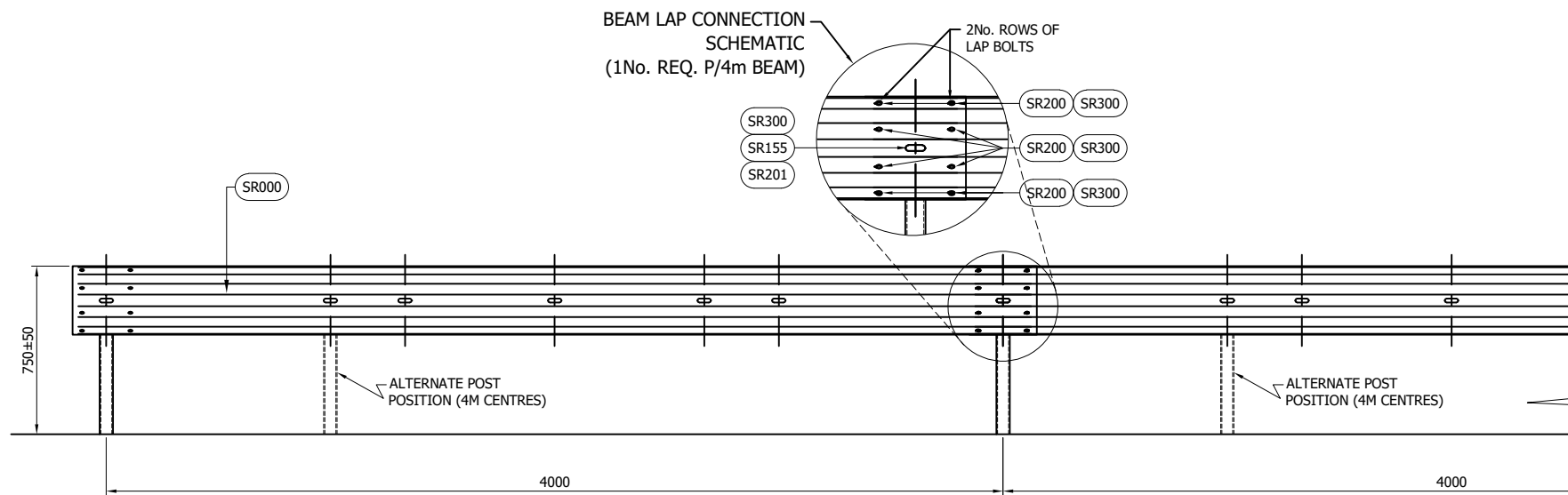
MegaRail ep N2W2/H1W3 VI 5

N2W2/H1W3 VEHICLE RESTRAINT
SYSTEM
COMPONENTS SCHEMATIC

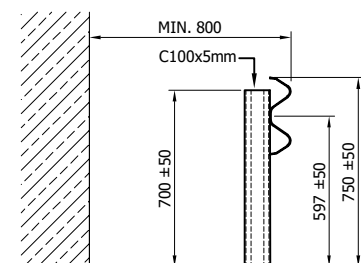
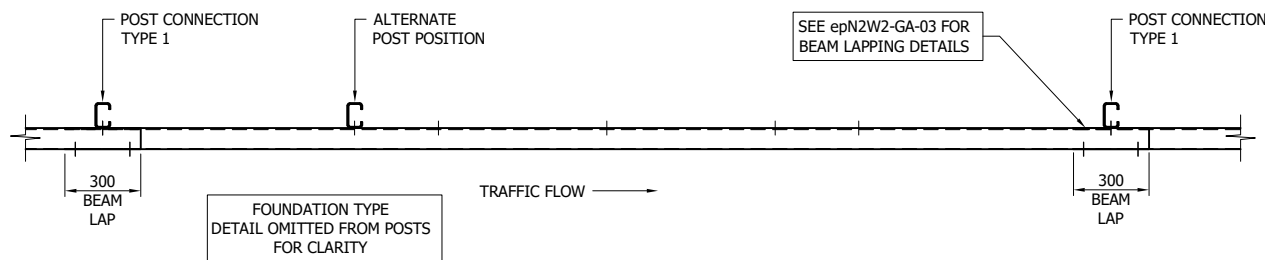


CONCORD HOUSE,
BESSEMER WAY, SCUNTHORPE,
NORTH LINCOLNSHIRE, DN15 8XE
t: 01724 289119
FOR TECHNICAL ASSISTANCE CONTACT
john.cudlipp@saferoad.co.uk

DRAWING NUMBER:	REVn:
epN2W2-GA-00	11



- GENERAL NOTES:
1. P.S.B. = POINT FROM WHERE SET-BACK IS MEASURED.
 2. POSTS ARE TO BE INSTALLED WITH THE CLOSED FACE OF THE CHANNEL TOWARDS THE ON-COMING TRAFFIC.
 3. FOR OPTIONS ON POST FOUNDATIONS REFER TO DRAWING NUMBER MR-GA-020
 4. FOR DEVIATIONS IN SYSTEM POST PITCH REFER TO DRAWING epN2W2-GA-40
 5. WHEN TYING INTO ADJACENT VRS ONLY ONE WORKING WIDTH DIFFERENCE IS PERMITTED.
 6. SEE MR-GA-001 & MR-GA-003 FOR DETAILS OF SYSTEM HEIGHTS WITH REFERENCE TO SETBACK & KERB HEIGHTS
 7. FOR MINIMUM LENGTH OF FULL HEIGHT VRS REFER TO SAFEROAD MEGARAIL MANUAL.



06	21/03/24	POST TYPE CHANGE & DETAILS UPDATED	H.B
05	18/03/22	TABLE 'A' REVISED	A.D
04	08/10/21	TOLERANCES ADDED	A.D
03	26/05/21	NOTES REVISED	M.T
02	12/02/19	TITLEBLOCK REVISED	H.B
01	20/04/17	BEAM TYPE REVISED	M.T
00	13/02/17	DRAWING CREATED	L.L
REVn	DATE	DETAILS	INITIAL

MegaRail ep N2W2/H1W3 VI 5

SYSTEM ASSEMBLY AND SETTING
OUT ARRANGEMENT SCHEMATIC

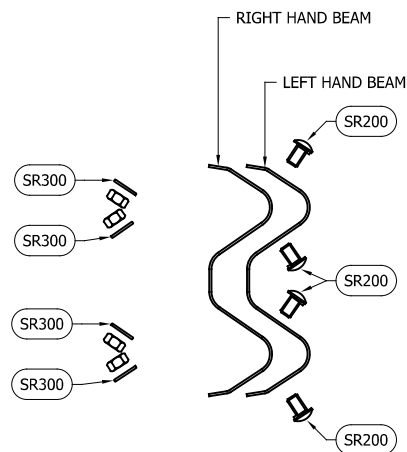


CONCORD HOUSE,
BESSEMER WAY, SCUNTHORPE,
NORTH LINCOLNSHIRE, DN15 8XE
t: 01724 289119
FOR TECHNICAL ASSISTANCE CONTACT
john.cudlipp@saferoad.co.uk

TOTAL COMPONENTS PER 4M BEAM		
SAFEROAD PART NUMBER	DESCRIPTION	QUANTITY
SR000	BEAM "A" PROFILE 4.3m x 2.5mm	1
SEE TABLE 'B'	POST C100 (5mm THICK)	1
FOR SCHEDULE OF BOLTED CONNECTIONS REFER TO DRAWING NUMBER epN2W2-GA-02		

TABLE 'B' - SCHEDULE OF POST REFERENCE NUMBERS AND LENGTHS	
SAFEROAD PART NUMBER	POST LENGTH
SR537	1100
SR538	1800
SR539	2000
SR540	2400

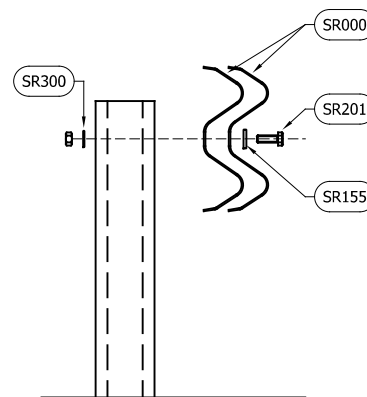
DRAWING NUMBER:	REVn:
epN2W2-GA-01	06



BEAM LAP FIXING SCHEMATIC
(x2 LOCATIONS / BEAM END)

** BEAM REFERENCES i.e. LEFT / RIGHT HAND ARE FOR VERGE INSTALLATIONS; FOR CENTRAL RESERVATION INSTALLATIONS THE REFERENCES ARE REVERSED

TOTAL QUANTITIES PER BEAM		
SAFEROAD PART NUMBER	DESCRIPTION	BEAM LAP CONNECTION
SR200	SETSCREW 4.6 LIP M16x27 c/w NUT	8 (+8)
SR300	WASHER M16 18Ø HOLE	8 (+8)



BEAM TO POST FIXING
SCHEMATIC
(CONNECTION TYPE 1)

TOTAL QUANTITIES PER POST		
SAFEROAD PART NUMBER	DESCRIPTION	BEAM TO POST CONNECTION
SR201	SETSCREW 8.8 M16 x 45 c/w NUT	1
SR155	WASHER PLATE 85 x 35 x 4 DIA. 18	1
SR300	WASHER M16 18Ø HOLE	1

GENERAL NOTES:

- NUMBERS IN THE SCHEDULES SUFFIXED (+) DENOTES THE ADDITIONAL QUANTITY OF COMPONENTS REQUIRED FOR EXTREME ENDS OF INDIVIDUAL RUNS OF BARRIER.

04	21/03/24	POST TYPE CHANGE	H.B
03	27/07/21	DETAILS REVISED	M.T
02	12/02/19	TITLEBLOCK REVISED	H.B
01	20/04/17	BEAM TYPE REVISED	M.T
00	13/02/17	DRAWING CREATED	L.L
REVn	DATE	DETAILS	INITIAL

MegaRail ep N2W2/H1W3 VI 5

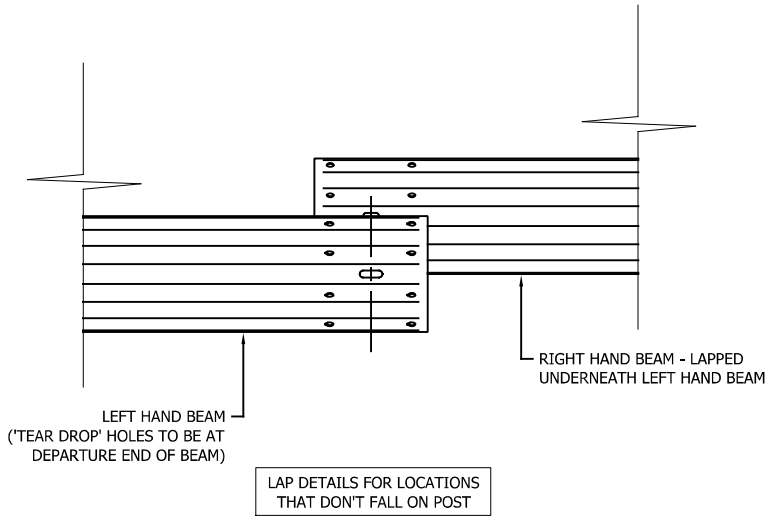
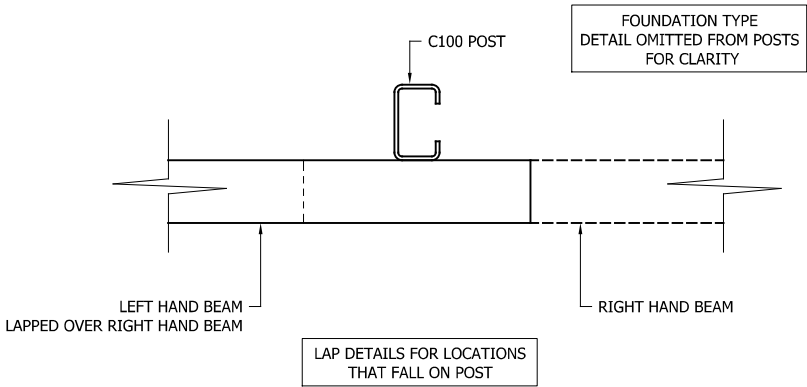
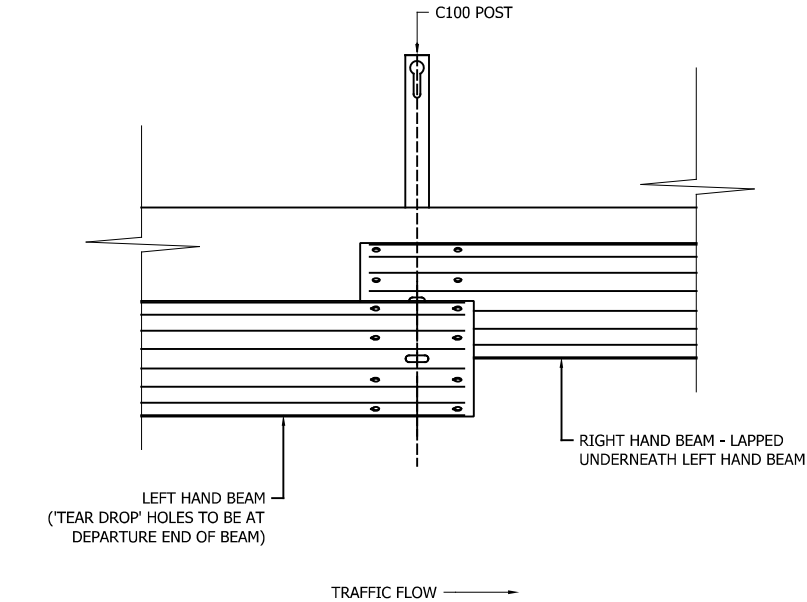
FIXING & INSTALLATION SCHEMATIC



CONCORD HOUSE,
BESSEMER WAY, SCUNTHORPE,
NORTH LINCOLNSHIRE, DN15 8XE
t: 01724 289119
FOR TECHNICAL ASSISTANCE CONTACT
john.cudlipp@saferoad.co.uk

DRAWING NUMBER:	REVn:
epN2W2-GA-02	04

- GENERAL NOTES:
1. POSTS ARE TO BE INSTALLED WITH THE CLOSED FACE OF THE CHANNEL TOWARDS THE ON-COMING TRAFFIC.



02	21/03/24	DRAWING UPDATED	H.B
01	12/02/19	TITLEBLOCK REVISED	H.B
00	13/02/17	DRAWING CREATED	L.L
REVn	DATE	DETAILS	INITIAL

MegaRail ep N2W2/H1W3 VI 5

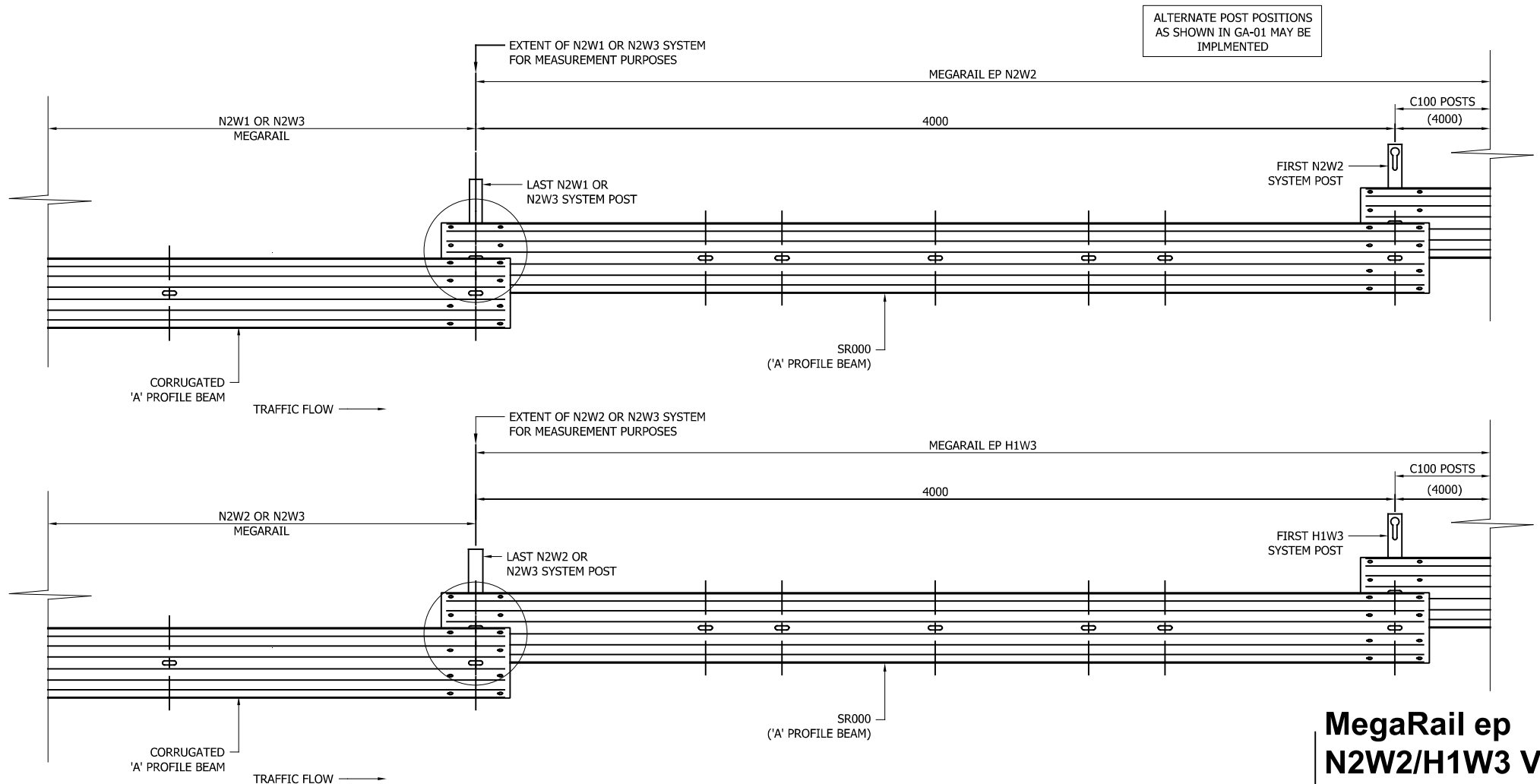
BEAM LAPPING DETAILS



CONCORD HOUSE,
BESSEMER WAY, SCUNTHORPE,
NORTH LINCOLNSHIRE, DN15 8XE
t: 01724 289119
FOR TECHNICAL ASSISTANCE CONTACT
john.cudlipp@saferoad.co.uk

DRAWING NUMBER:	REVn:
epN2W2-GA-03	02

** BEAM REFERENCES i.e. LEFT / RIGHT HAND ARE FOR VERGE INSTALLATIONS; FOR CENTRAL RESERVATION INSTALLATIONS THE REFERENCES ARE REVERSED



MegaRail ep N2W2/H1W3 VI 5

SYSTEM PROGRESSION DETAILS



CONCORD HOUSE,
BESSEMER WAY, SCUNTHORPE,
NORTH LINCOLNSHIRE, DN15 8XE
t: 01724 289119
FOR TECHNICAL ASSISTANCE CONTACT
john.cudlipp@saferoad.co.uk

DRAWING NUMBER:

REVn:

epN2W2-GA-20

04

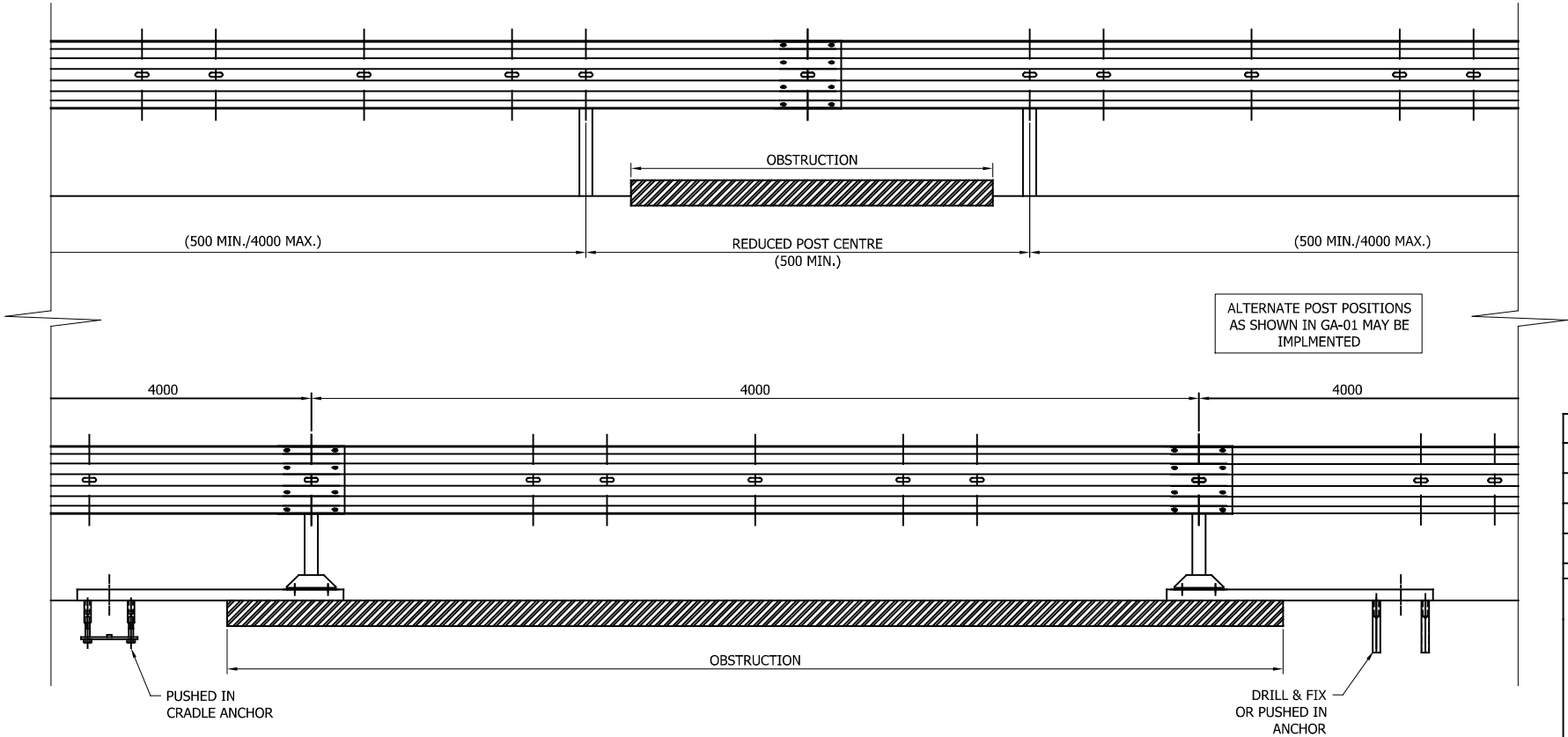
GENERAL NOTES:

1. POSTS ARE TO BE INSTALLED WITH THE CLOSED FACE OF THE CHANNEL TOWARDS THE ON-COMING TRAFFIC.

** BEAM REFERENCES i.e. LEFT / RIGHT HAND ARE FOR VERGE INSTALLATIONS; FOR CENTRAL RESERVATION INSTALLATIONS THE REFERENCES ARE REVERSED

04	21/03/24	DRAWING UPDATED	H.B
03	26.05.21	DETAILS REVISED	M.T
02	20/06/19	LOWER DETAIL REVISED	M.T
01	12/02/19	TITLEBLOCK REVISED	H.B
00	13/02/17	DRAWING CREATED	L.L
REVn	DATE	DETAILS	INITIAL

- GENERAL NOTES:
1. IN PRINCIPLE, THE DISTANCE BETWEEN THE POSTS ARE NOT EXCEEDED. IF THE SITE CONDITIONS DO NOT ALLOW A REGULAR DISTANCE, THE POST SPACING MUST BE REDUCED WITH AN ADDITIONAL POST.
 2. OFFSET POSTS SHOWN ON DRAWING epN2W2-GA-00 CAN BE USED.



04	21/03/24	DRAWING UPDATED	H.B
03	13/05/22	SURFACE MOUNTED POST BASE CHANGED	A,D
02	23/07/21	SURFACE MOUNTED POST DETAIL ADDED	A,D
01	12/02/19	TITLEBLOCK REVISED	H,B
00	13/02/17	DRAWING CREATED	L,L
REVn	DATE	DETAILS	INITIAL

MegaRail ep
N2W2/H1W3 VI 5

DETAILS OF PERMISSABLE
DEVIATIONS FOR POST POSITIONS

 SAFEROAD

CONCORD HOUSE,
BESSEMER WAY, SCUNTHORPE,
NORTH LINCOLNSHIRE, DN15 8XE
t: 01724 289119
FOR TECHNICAL ASSISTANCE CONTACT
john.cudlipp@saferoad.co.uk

DRAWING NUMBER:	REVn:
epN2W2-GA-40	04