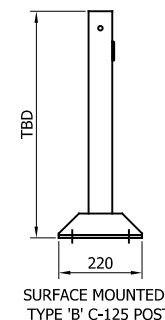
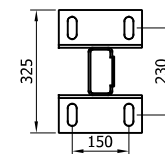
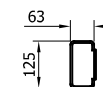
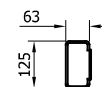
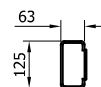
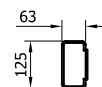


BASEPLATE DRILL &  
TAPPED FOR LIFTING EYE



SR049 - TYPE 'B' POST "C"  
125  
1100mm x 5

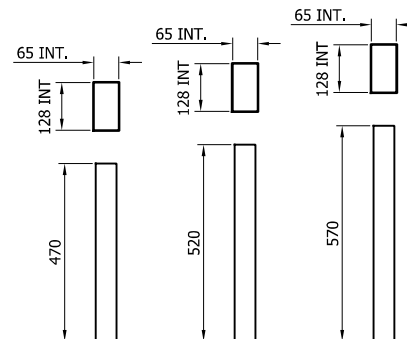
SR047 - TYPE 'B' POST  
"C" 125 1800mm x 5

SR048 - TYPE 'B' POST  
"C" 125 2000mm x 5

SR037 - TYPE 'B' POST  
"C" 125 2400mm x 5



SR100 - A21  
REINFORCING  
RING



SR080 - C-125  
POST SOCKET  
x 470

SR081 - C-125  
POST SOCKET  
x 520

SR083 - C-125  
POST SOCKET  
x 570

|      |          |                 |         |
|------|----------|-----------------|---------|
|      |          |                 |         |
|      |          |                 |         |
|      |          |                 |         |
|      |          |                 |         |
|      |          |                 |         |
|      |          |                 |         |
|      |          |                 |         |
| 00   | 24/07/24 | DRAWING CREATED | H.B     |
| REVn | DATE     | DETAILS         | INITIAL |

## MegaRail ec2.2 N2W2

COMPONENTS SCHEMATIC



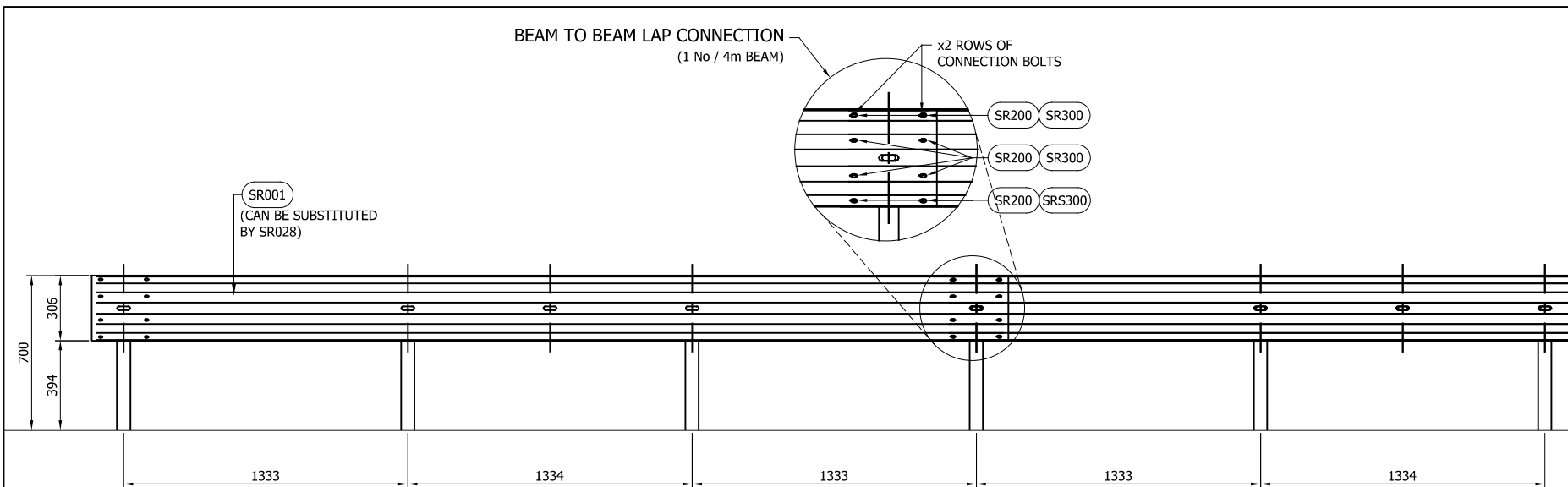
CONCORD HOUSE,  
BESSEMER WAY, SCUNTHORPE,  
NORTH LINCOLNSHIRE, DN15 8XE  
t: 01724 289119  
e: john.cudlipp@saferoad.co.uk

DRAWING NUMBER:

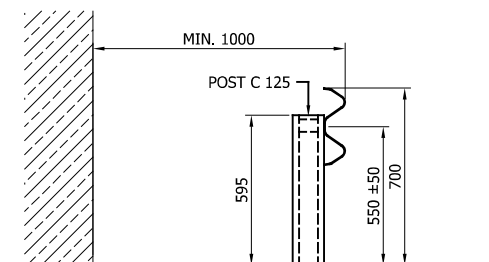
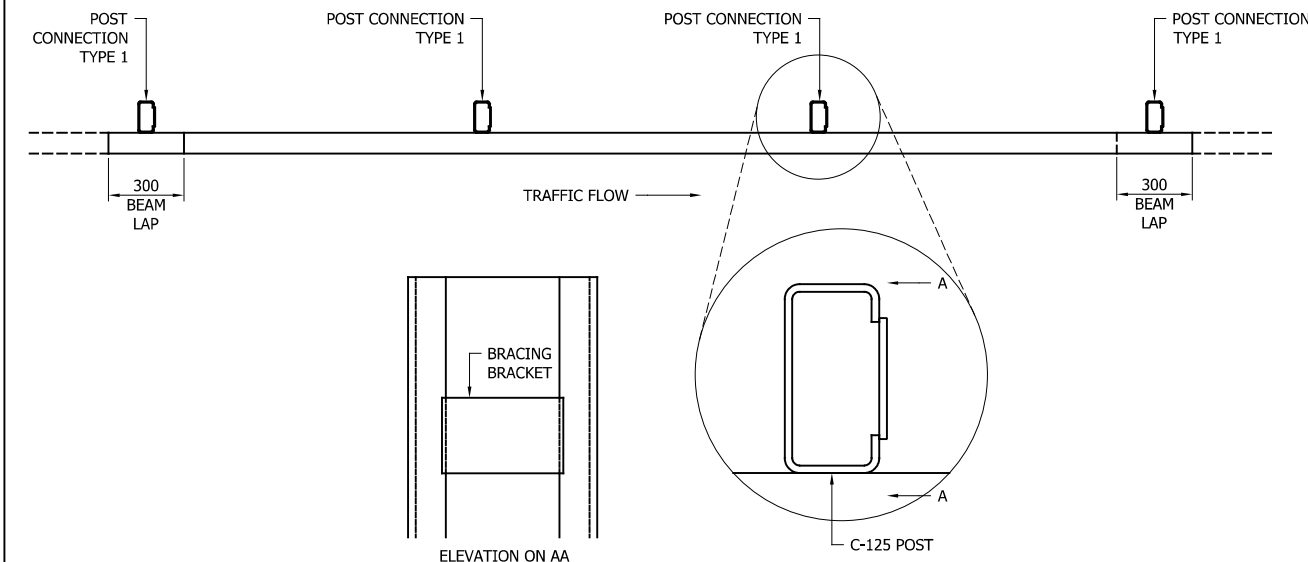
ecN2W2-GA-00

REVn:

00



- GENERAL NOTES:
1. POSTS ARE TO BE INSTALLED WITH THE CLOSED FACE OF THE CHANNEL TOWARDS THE ON-COMING TRAFFIC.
  2. FOR OPTIONS ON POST FOUNDATIONS REFER TO DRAWING NUMBER MR-GA-020
  3. WHEN TYING INTO ADJACENT VRS ONLY ONE WORKING WIDTH DIFFERENCE IS PERMITTED.
  4. WHERE A KERB IS PRESENT THE MAXIMUM KERB HEIGHT IS 100mm. SHOULD THE KERB BE HIGHER THAN 100mm AND THE FENCE IS SETBACK LESS THAN 250mm FROM THE FACE OF THE KERB. THE SYSTEM HEIGHT IS MEASURE FROM THE CARRIAGEWAY. IF THE SETBACK IS MORE THAN 250mm FROM THE FACE OF KERB THE SYSTEM HEIGHT IS MEASURED FROM THE TOP OF THE KERB.
  5. FOR MINIMUM LENGTH OF FULL HEIGHT VRS REFER TO SAFEROAD MEGARAIL MANUAL.
  6. FOR DEVIATIONS IN SYSTEM POST PITCH REFER TO DRAWING ecN2W2-GA-40.



## MegaRail ec2.2 N2W2

GENERAL ARRANGEMENT AND  
SETTING OUT DETAILS



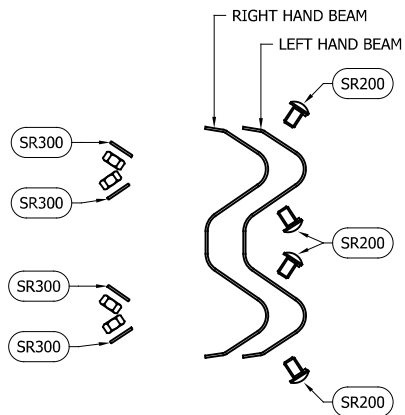
CONCORD HOUSE,  
BESSEMER WAY, SCUNTHORPE,  
NORTH LINCOLNSHIRE, DN15 8XE  
t: 01724 289119  
e: john.cudlipp@saferoad.co.uk

| TABLE 'A' - SYSTEM COMPONENT SCHEDULE - QUANTITIES / 4m BEAM            |  |          |
|---|--|----------|
| SAFEROAD UK PART NUMBER   | DESCRIPTION                                    | QUANTITY |
| SR001   | BEAM "A" PROFILE (CAN BE SUBSTITUTED BY SR028) | 1        |
| SEE TABLE 'B'   | POST "C" 125 c/w BRACKET                       | 3        |
| FOR SCHEDULE OF BOLTED CONNECTIONS REFER TO DRAWING NUMBER ecN2W2-GA-02 |  |          |

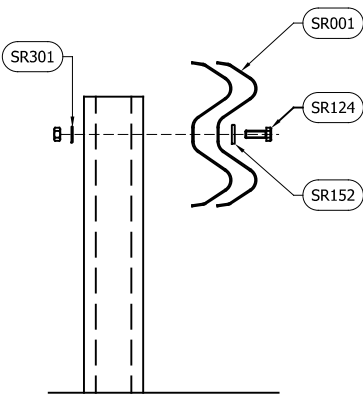
| TABLE 'B' - SCHEDULE OF POST REFERENCE NUMBERS AND LENGTHS |             |
|--|-------------|
| SAFEROAD UK PART NUMBER                                    | POST LENGTH |
| SR049  | 1100        |
| SR047  | 1800        |
| SR048  | 2000        |
| SR037  | 2400        |

|      |          |                 |         |
|------|----------|-----------------|---------|
|      |          |                 |         |
|      |          |                 |         |
|      |          |                 |         |
|      |          |                 |         |
| 00   | 24/07/24 | DRAWING CREATED | H,B     |
| REVn | DATE     | DETAILS         | INITIAL |

|                 |       |
|-----------------|-------|
| DRAWING NUMBER: | REVn: |
| ecN2W2-GA-01    | 00    |



BEAM TO BEAM CONNECTION  
ARRANGEMENT  
(x2 LOCATIONS / BEAM END)



BEAM TO POST  
CONNECTION TYPE 1

| BOLTING COMPONENT SCHEDULE - QUANTITIES / BEAM |                                 |                         |
|--|---------------------------------|-------------------------|
| SAFEROAD UK PART NUMBER                        | DESCRIPTION                     | BEAM TO BEAM CONNECTION |
| SR200  | SETSCREW 4.6 LIP M16x27 c/w NUT | 8 (+8)                  |
| SR300  | WASHER M16 18Ø HOLE             | 8 (+8)                  |

| BOLTING COMPONENT SCHEDULE - QUANTITIES / POST |                                   |                   |
|--|-----------------------------------|-------------------|
| SAFEROAD UK PART NUMBER                        | DESCRIPTION                       | TYPE 1 CONNECTION |
| SR124  | SETSCREW 8.8 M10 x 45 c/w NUT     | 1                 |
| SR152  | WASHER PLATE 115 x 40 x 5 DIA. 12 | 1                 |
| SR301  | M10 WASHER 11Ø HOLE               | 1                 |

\*\* BEAM REFERENCES i.e. LEFT / RIGHT HAND ARE FOR VERGE INSTALLATIONS; FOR CENTRAL RESERVATION INSTALLATIONS THE REFERENCES ARE REVERSED

GENERAL NOTES:  
1. NUMBERS IN THE SCHEDULES SUFFIXED (+) DENOTES THE ADDITIONAL QUANTITY OF COMPONENTS REQUIRED FOR EXTREME ENDS OF INDIVIDUAL RUNS OF BARRIER.

|      |          |                 |         |
|------|----------|-----------------|---------|
|      |          |                 |         |
|      |          |                 |         |
|      |          |                 |         |
|      |          |                 |         |
| 00   | 24/07/24 | DRAWING CREATED | H.B     |
| REVn | DATE     | DETAILS         | INITIAL |

## MegaRail ec2.2 N2W2

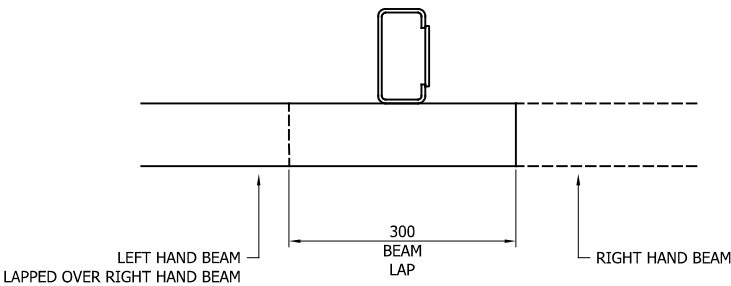
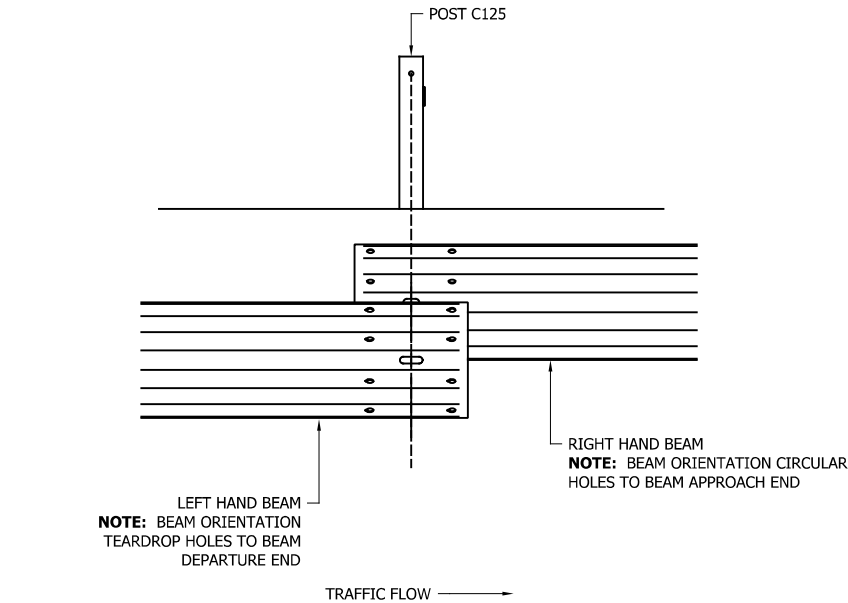
FIXINGS & INSTALLATION  
SCHEMATIC



CONCORD HOUSE,  
BESSEMER WAY, SCUNTHORPE,  
NORTH LINCOLNSHIRE, DN15 8XE  
t: 01724 289119  
e: john.cudlipp@saferoad.co.uk

|                 |       |
|-----------------|-------|
| DRAWING NUMBER: | REVn: |
| ecN2W2-GA-02    | 00    |

- GENERAL NOTES:
1. POSTS ARE TO BE INSTALLED WITH THE CLOSED FACE OF THE CHANNEL TOWARDS THE ON-COMING TRAFFIC.



\*\* BEAM REFERENCES i.e. LEFT / RIGHT HAND ARE FOR VERGE INSTALLATIONS; FOR CENTRAL RESERVATION INSTALLATIONS THE REFERENCES ARE REVERSED

|      |          |                 |         |
|------|----------|-----------------|---------|
|      |          |                 |         |
| 00   | 24/07/24 | DRAWING CREATED | H.B     |
| REVn | DATE     | DETAILS         | INITIAL |

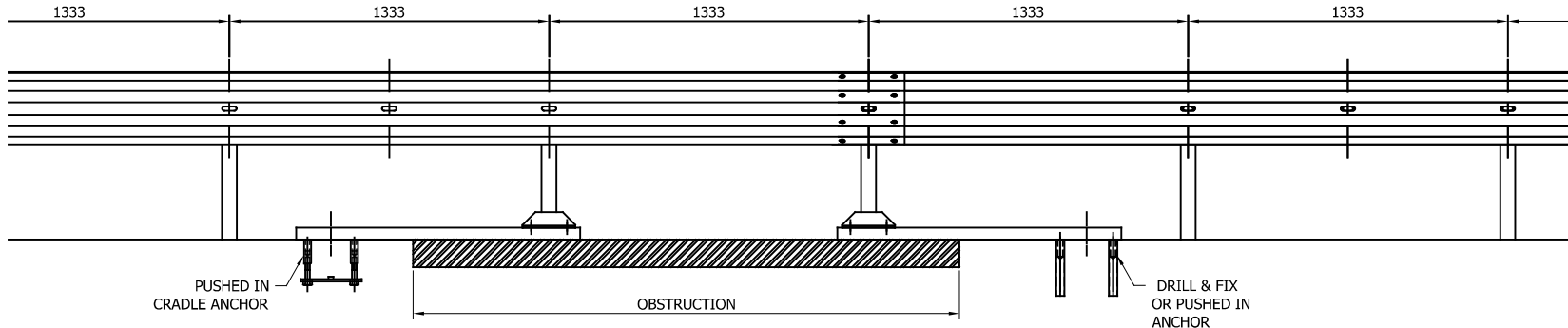
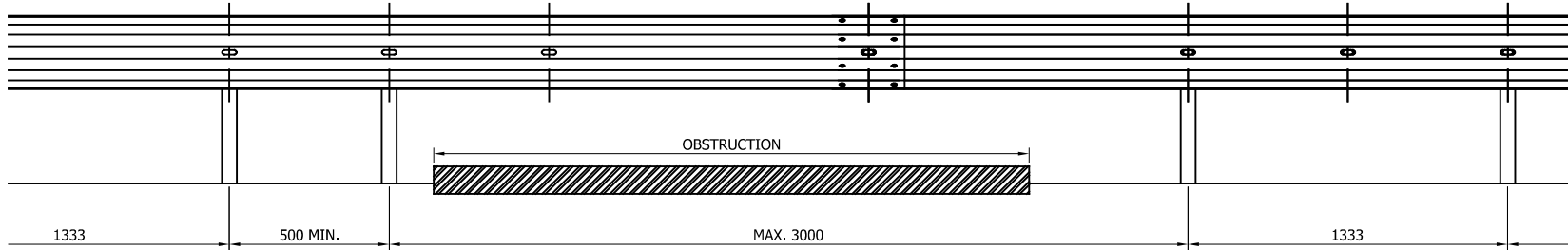
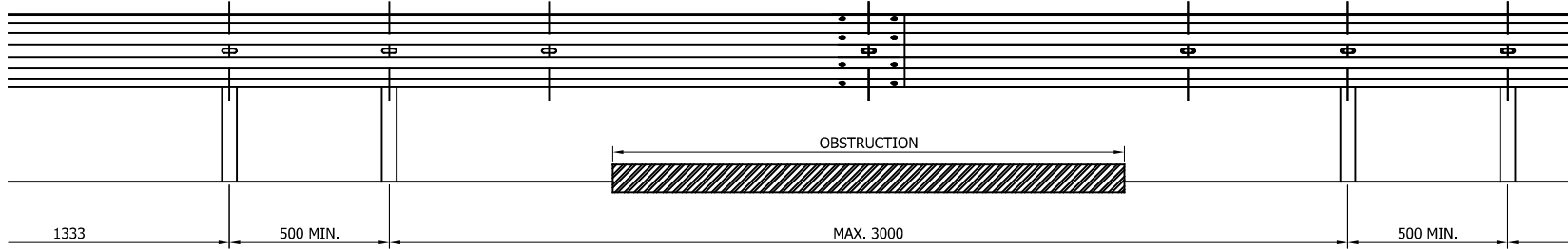
# MegaRail ec2.2 N2W2

BEAM LAPPING DETAILS



CONCORD HOUSE,  
BESSEMER WAY, SCUNTHORPE,  
NORTH LINCOLNSHIRE, DN15 8XE  
t: 01724 289119  
e: john.cudlipp@saferoad.co.uk

|                 |       |
|-----------------|-------|
| DRAWING NUMBER: | REVn: |
| ecN2W2-GA-03    | 00    |



#### GENERAL NOTES:

1. IF THE SITE CONDITIONS DO NOT ALLOW A POST TO BE INSTALLED ON THE SYSTEM PITCH DEVIATIONS CAN BE APPLIED. THE OBSTRUCTED POST CAN BE LEFT OUT AND EXTRA POSTS INSTALLED TO SPAN THE OBSTRUCTION. THE NEW POST SPACING MUST NOT EXCEED 3000mm AND MUST NOT BE LESS THAN 500mm. ALTHOUGH IT WOULD BE BENEFICIAL TO USE THE HOLES ALREADY IN THE BEAM IT IS ACCEPTABLE TO DRILL NEW HOLES IN THE DESIRED POSITIONS AND TREAT WITH ZINC RICH PAINT.
2. OFFSET POSTS SHOWN ON DRAWING ecN2W2-GA-00 CAN BE USED.

|      |          |                 |         |
|------|----------|-----------------|---------|
|      |          |                 |         |
|      |          |                 |         |
|      |          |                 |         |
|      |          |                 |         |
|      |          |                 |         |
|      |          |                 |         |
| 00   | 24/07/24 | DRAWING CREATED | H.B     |
| REVn | DATE     | DETAILS         | INITIAL |

## MegaRail ec2.2 N2W2

PERMISSIBLE DEVIATION SETTING  
OUT DETAILS



CONCORD HOUSE,  
BESSEMER WAY, SCUNTHORPE,  
NORTH LINCOLNSHIRE, DN15 8XE  
t: 01724 289119  
e: john.cudlipp@saferoad.co.uk

DRAWING NUMBER:

ecN2W2-GA-40

REVn:

00