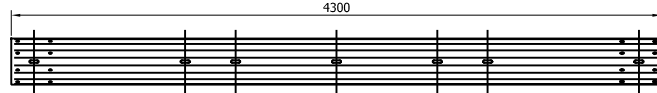
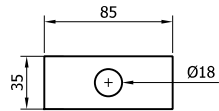


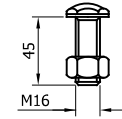
SR542 - PROFILE 'A' BEAM  
5300mm x 2.5mm



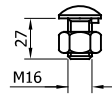
SR000 - "A" PROFILE BEAM 4.3m x 2.5mm THK



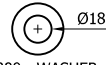
SR155 - WASHER PLATE  
85 x 35 x 4 DIA. 18



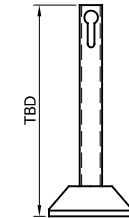
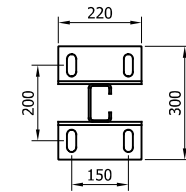
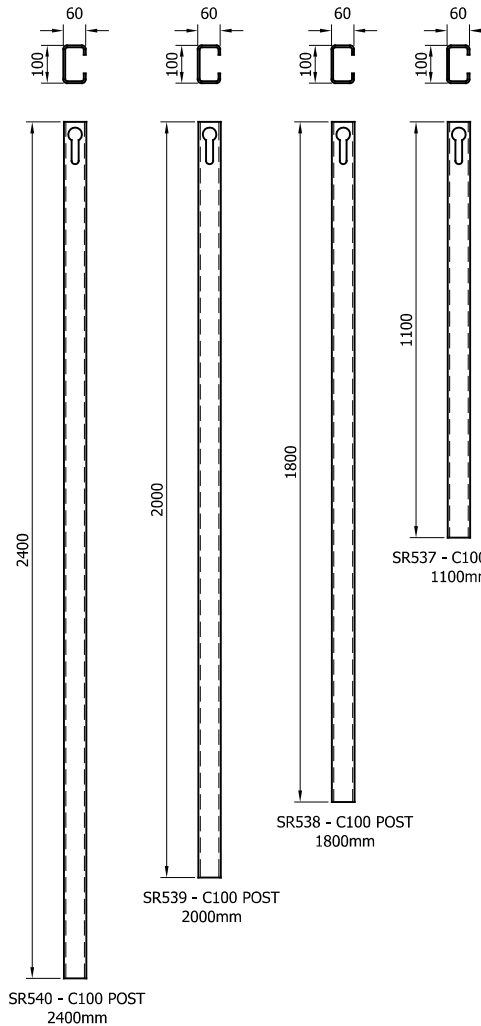
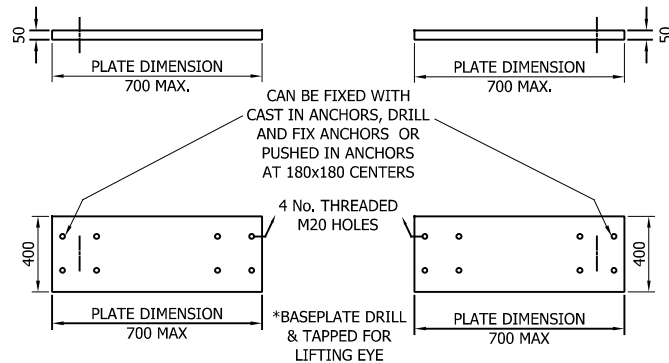
SR201 - PANHEAD 8.8  
M16x45 C/W NUT



SR200 - SETSCREW 4.6 LIP  
M16x27 c/w NUT



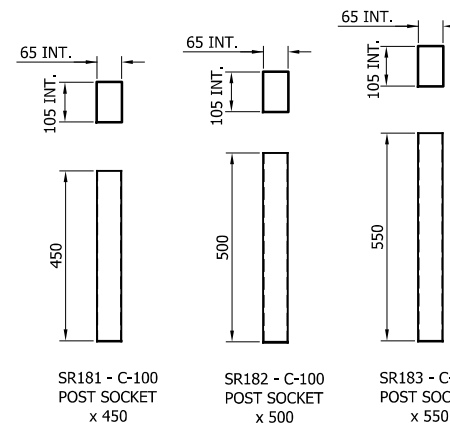
SR300 - WASHER  
M16



SR541 - SURFACE  
MOUNTED C100 POST



SR100 - A21  
REINFORCING  
RING



REVn	DATE	DETAILS	INITIAL
02	27/09/24	SR000 DETAILS ADDED	H.B
01	28/06/24	PRODUCT CODES UPDATED	H.B
00	06/06/23	DRAWING CREATED	H.B

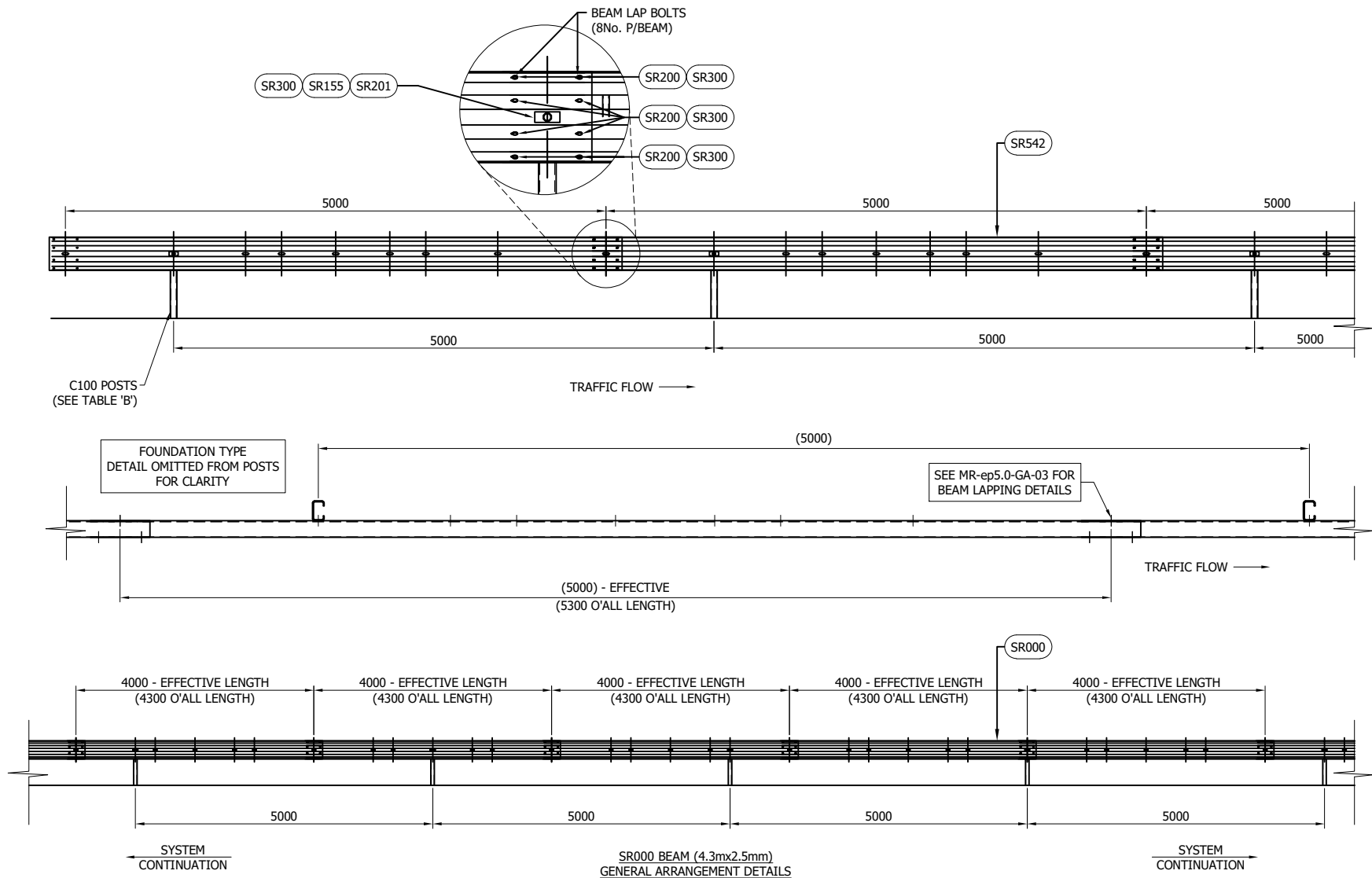
## MEGARAIL EP 5.0 N2 W3

### COMPONENTS SCHEMATIC



CONCORD HOUSE,  
BESSEMER WAY, SCUNTHORPE,  
NORTH LINCOLNSHIRE, DN15 8XE  
t: 01724 289119  
FOR TECHNICAL ASSISTANCE CONTACT  
john.cudlipp@saferoad.co.uk

DRAWING NUMBER:	REVn:
MR-ep5.0-GA-00	02



#### GENERAL NOTES:

1. P.S.B. = POINT FROM WHERE SET-BACK IS MEASURED.
2. POSTS ARE TO BE INSTALLED WITH THE CLOSED FACE OF THE CHANNEL TOWARDS THE ON-COMING TRAFFIC.
3. FOR OPTIONS ON POST FOUNDATIONS REFER TO DRAWING NUMBER MR-GA-020
4. FOR DEVIATIONS IN SYSTEM POST CENTRES, REFER TO DRAWING MR-ep5.0-GA-40
5. WHEN TYING INTO ADJACENT VRS ONLY ONE WORKING WIDTH DIFFERENCE IS PERMITTED.
6. SEE MR-GA-001 & MR-GA-003 FOR DETAILS OF SYSTEM HEIGHTS WITH REFERENCE TO SETBACK & KERB HEIGHTS.
7. FOR MINIMUM LENGTH OF FULL HEIGHT VRS REFER TO SAFEROAD MEGARAIL MANUAL.
8. SR000 BEAM MAY ALSO BE USED AS AN ALTERNATIVE OPTION

REVn	DATE	DETAILS	INITIAL
02	27/09/24	SR000 DETAILS ADDED	H.B
01	28/06/24	PRODUCT CODES UPDATED	H.B
00	06/06/23	DRAWING CREATED	H.B

## MEGARAIL EP 5.0 N2 W3

### GENERAL ARRANGMENT DETAILS



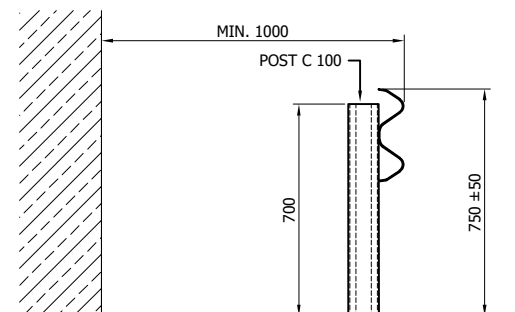
CONCORD HOUSE,  
BESSEMER WAY, SCUNTHORPE,  
NORTH LINCOLNSHIRE, DN15 8XE  
t: 01724 289119  
FOR TECHNICAL ASSISTANCE CONTACT  
john.cudlipp@saferoad.co.uk

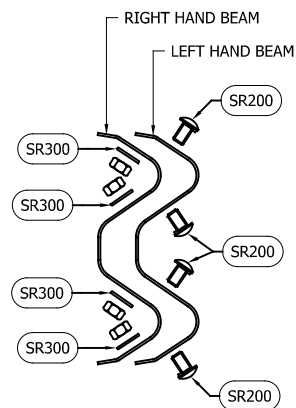
DRAWING NUMBER: MR-ep5.0-GA-01 REVn: 02

SAFEROAD UK PART NUMBER	DESCRIPTION	QUANTITY
SR542/SR000	'A' PROFILE BEAM (SEE GA-00)	1
SEE TABLE 'B'	C100 POSTS	1

FOR FIXING SCHEMATIC DETAILS, PLEASE SEE MR-ep5.0-GA-02

SAFEROAD UK PART NUMBER	POST LENGTH
SR537	1100
SR538	1800
SR539	2000
SR540	2400

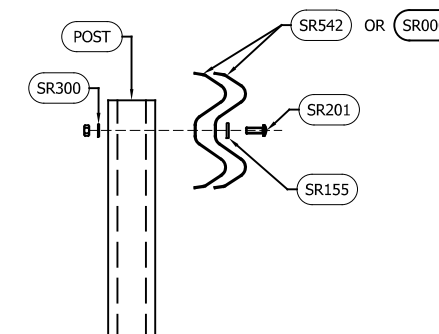




BEAM LAP CONNECTION  
FIXING SCHEMATIC  
(QTY P/1No. BEAM)

\*\* BEAM REFERENCES i.e. LEFT / RIGHT HAND ARE FOR VERGE INSTALLATIONS; FOR CENTRAL RESERVATION INSTALLATIONS THE REFERENCES ARE REVERSED

BEAM LAP CONNECTION		
SAFEROAD UK PART NUMBER	DESCRIPTION	QTY'S P/BEAM
SR200	SETSCREW 4.6 LIP M16x27 c/w NUT	8 (+8)
SR300	WASHER M16 18ø HOLE	8 (+8)



BEAM TO POST  
CONNECTION  
(QTY'S P/POST)

BEAM TO POST CONNECTION		
SAFEROAD UK PART NUMBER	DESCRIPTION	QTY'S P/POST
SR201	PANHEAD 8.8 M16 x 45 C/W NUT	1
SR155	WASHER PLATE 85 x 35 x 4 DIA. 18	1
SR300	WASHER M16 18ø HOLE	1

#### GENERAL NOTES:

- NUMBERS IN THE SCHEDULES SUFFIXED (+) DENOTES THE ADDITIONAL QUANTITY OF COMPONENTS REQUIRED FOR EXTREME ENDS OF INDIVIDUAL RUNS OF BARRIER.

REVn	DATE	DETAILS	INITIAL
02	27/09/24	SR000 DETAILS ADDED	H.B
01	28/06/24	PRODUCT CODES UPDATED	H.B
00	06/06/23	DRAWING CREATED	H.B

## MEGARAIL EP 5.0 N2 W3

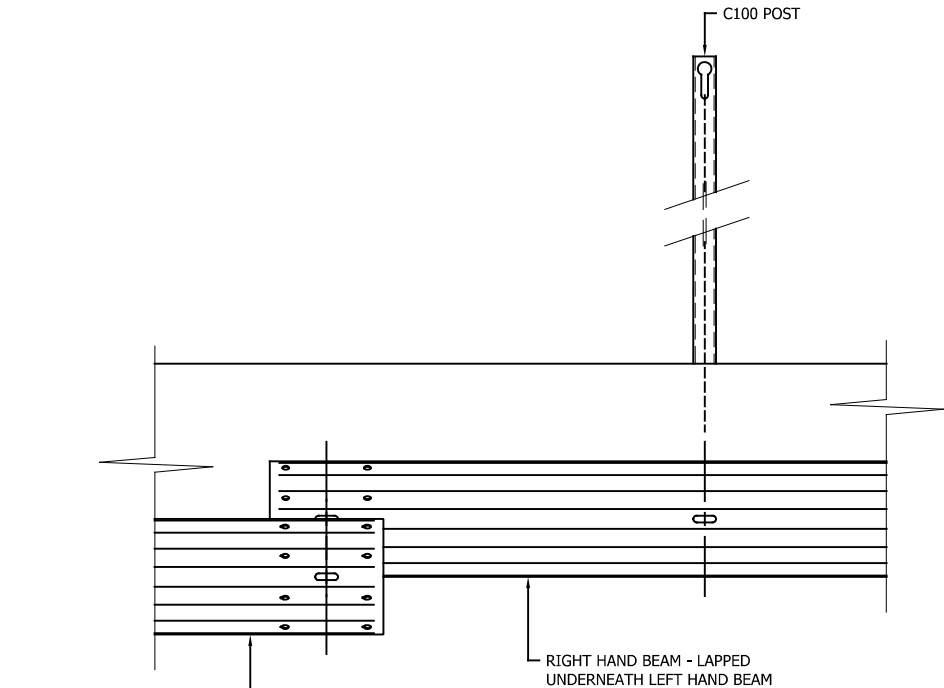
SYSTEM BOLTING ARRANGEMENT



CONCORD HOUSE,  
BESSEMER WAY, SCUNTHORPE,  
NORTH LINCOLNSHIRE, DN15 8XE  
t: 01724 289119  
FOR TECHNICAL ASSISTANCE CONTACT  
john.cudlipp@saferoad.co.uk

DRAWING NUMBER:	REVn:
MR-ep5.0-GA-02	02

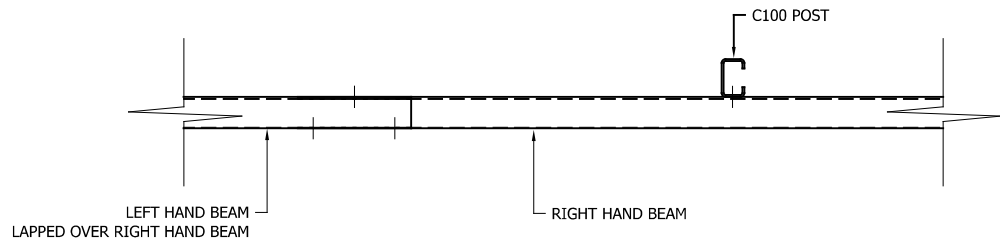
- GENERAL NOTES:
1. POSTS ARE TO BE INSTALLED WITH THE CLOSED FACE OF THE CHANNEL TOWARDS THE ON-COMING TRAFFIC.



LEFT HAND BEAM  
(‘TEAR DROP’ HOLES TO BE AT  
DEPARTURE END OF BEAM)

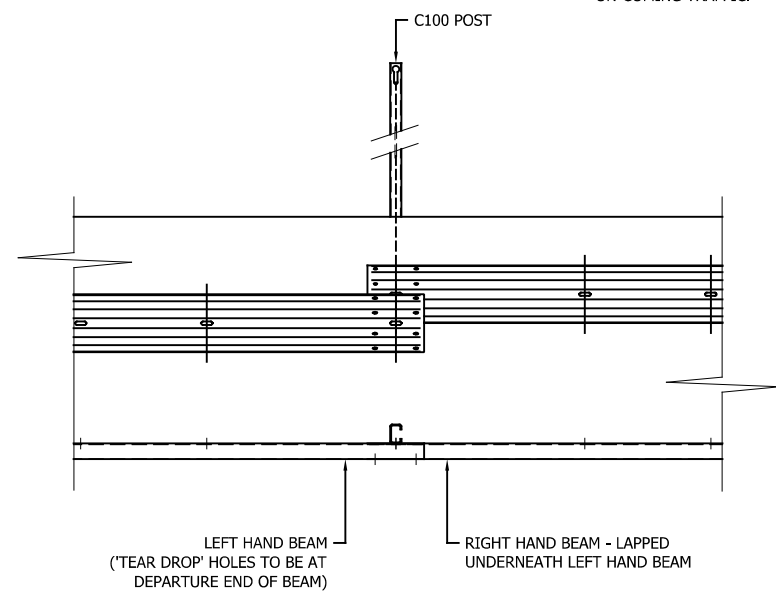
LAP DETAILS FOR LOCATIONS  
THAT DON’T FALL ON POST  
(OCCURS WHEN USING BOTH SR542 & SR000 BEAMS)

FOUNDATION TYPE  
DETAIL OMITTED FROM POSTS  
FOR CLARITY



LEFT HAND BEAM  
LAPPED OVER RIGHT HAND BEAM

LAP DETAILS FOR LOCATIONS  
THAT DON’T FALL ON POST  
(OCCURS WHEN USING BOTH SR542 & SR000 BEAMS)



LAP DETAILS FOR LOCATIONS  
THAT FALL ON POST  
(ONLY OCCURS WHEN USING SR000)

REVn	DATE	DETAILS	INITIAL
01	27/09/24	SR000 DETAILS ADDED	H.B
00	06/06/23	DRAWING CREATED	H.B

## MEGARAIL EP 5.0 N2 W3

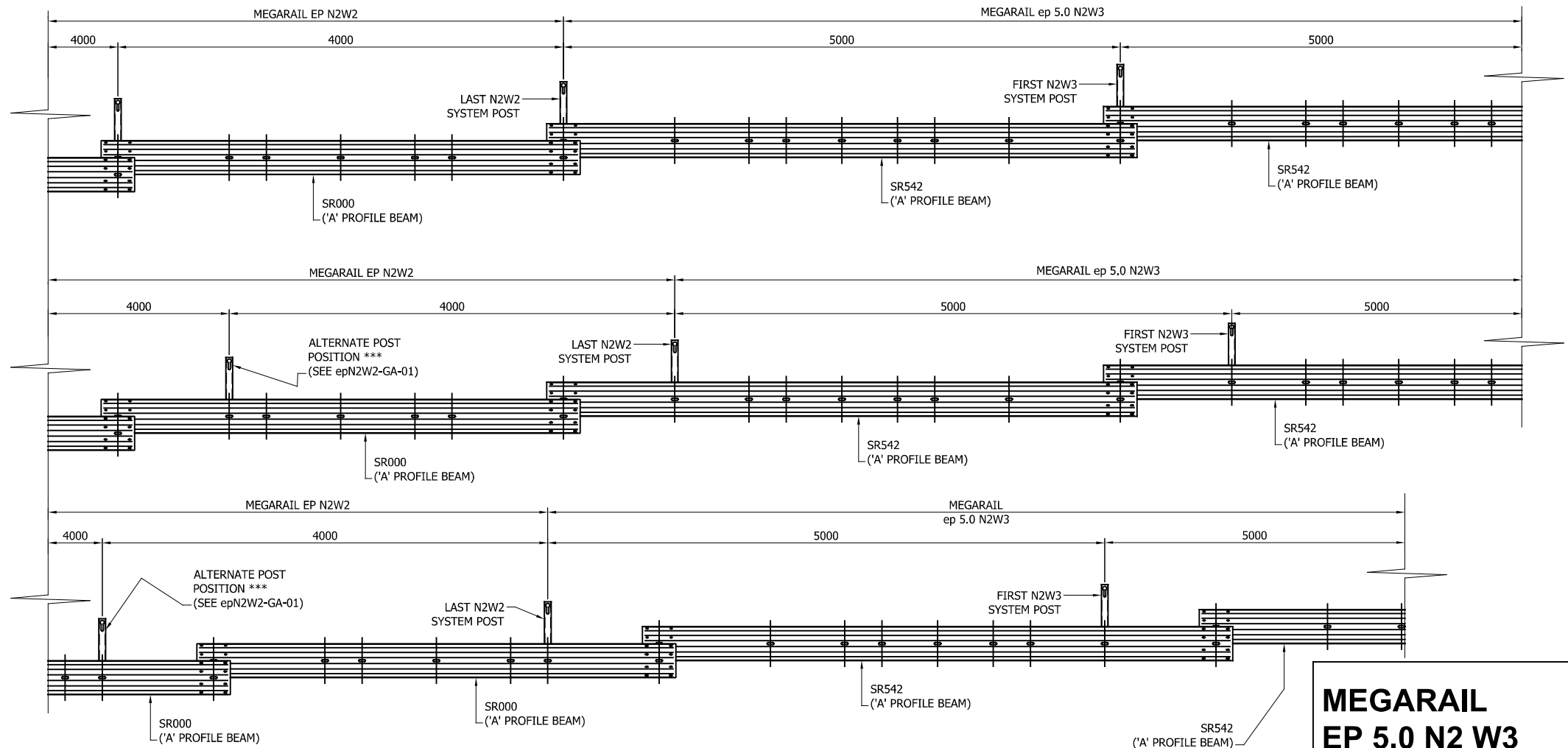
BEAM LAPPING DETAILS



CONCORD HOUSE,  
BESSEMER WAY, SCUNTHORPE,  
NORTH LINCOLNSHIRE, DN15 8XE  
t: 01724 289119  
FOR TECHNICAL ASSISTANCE CONTACT  
john.cudlipp@saferoad.co.uk

DRAWING NUMBER:	REVn:
MR-ep5.0-GA-03	01

\*\* BEAM REFERENCES i.e. LEFT / RIGHT HAND ARE FOR VERGE  
INSTALLATIONS; FOR CENTRAL RESERVATION INSTALLATIONS THE  
REFERENCES ARE REVERSED



## MEGARAIL EP 5.0 N2 W3

SYSTEM PROGRESSION DETAILS  
FOR MEGARAIL EP 5.0 SYSTEM USING  
5M BEAM (SR542)



CONCORD HOUSE,  
BESSEMER WAY, SCUNTHORPE,  
NORTH LINCOLNSHIRE, DN15 8XE  
t: 01724 289119  
FOR TECHNICAL ASSISTANCE CONTACT  
john.cudlipp@saferoad.co.uk

DRAWING NUMBER:

REVn:

MR-ep5.0-GA-20

03

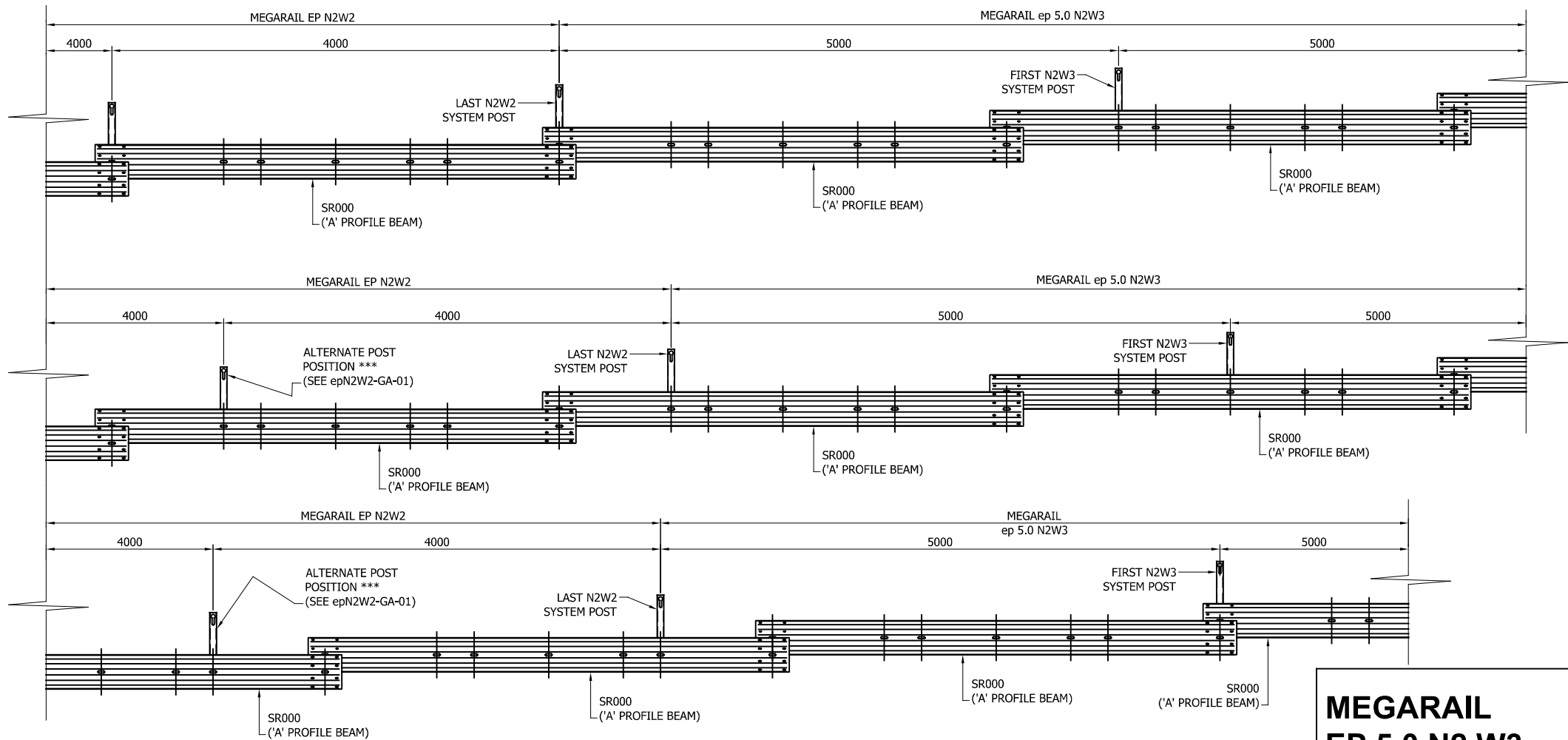
### GENERAL NOTES:

1. POSTS ARE TO BE INSTALLED WITH THE CLOSED FACE OF THE CHANNEL TOWARDS THE ON-COMING TRAFFIC.
2. SR000 BEAM MAY ALSO BE USED AS AN ALTERNATIVE OPTION (SEE MR-ep5.0-GA-21 FOR DETAILS)

\*\* BEAM REFERENCES i.e. LEFT / RIGHT HAND ARE FOR VERGE INSTALLATIONS; FOR CENTRAL RESERVATION INSTALLATIONS THE REFERENCES ARE REVERSED

SEE MR-ep5.0-GA-03 FOR  
BEAM LAP CONNECTION DETAILS

REVn	DATE	DETAILS	INITIAL
03	18/11/24	DRAWING UPDATED	H.B
02	27/09/24	SR000 DETAILS ADDED	H.B
01	28/06/24	PRODUCT CODES UPDATED	H.B
00	06/06/23	DRAWING CREATED	H.B



## MEGARAIL EP 5.0 N2 W3

SYSTEM PROGRESSION DETAILS  
FOR MEGARAIL EP 5.0 SYSTEM USING  
4M BEAM (SR000)



CONCORD HOUSE,  
BESSEMER WAY, SCUNTHORPE,  
NORTH LINCOLNSHIRE, DN15 8XE  
t: 01724 289119  
FOR TECHNICAL ASSISTANCE CONTACT  
john.cudlipp@saferoad.co.uk

DRAWING NUMBER: **MR-ep5.0-GA-21** REVn: **00**

### GENERAL NOTES:

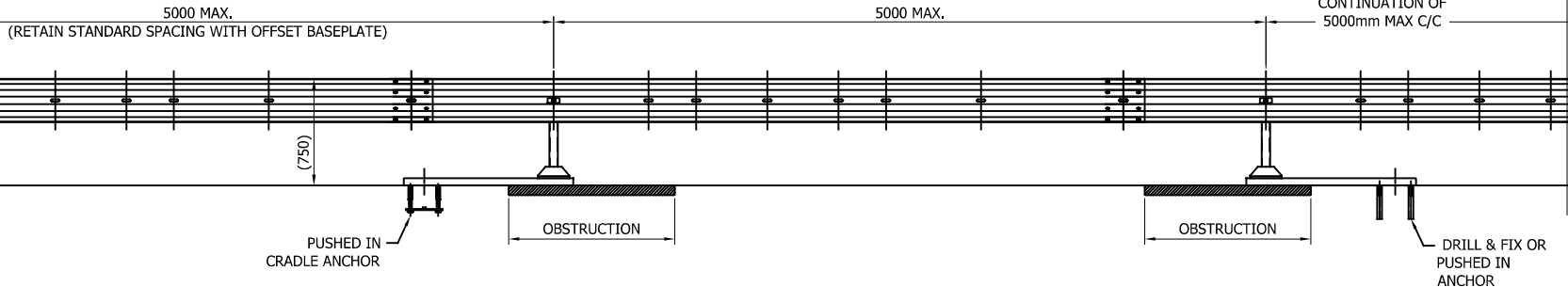
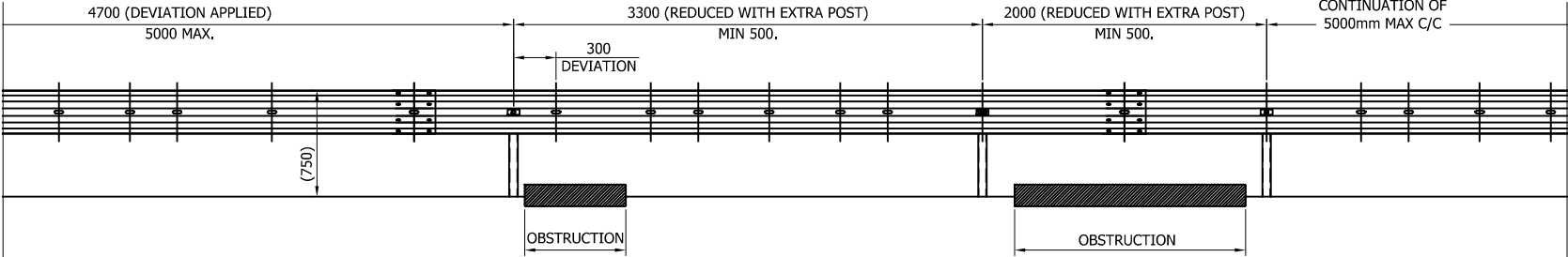
1. POSTS ARE TO BE INSTALLED WITH THE CLOSED FACE OF THE CHANNEL TOWARDS THE ON-COMING TRAFFIC.

\*\* BEAM REFERENCES i.e. LEFT / RIGHT HAND ARE FOR VERGE INSTALLATIONS; FOR CENTRAL RESERVATION INSTALLATIONS THE REFERENCES ARE REVERSED

SEE MR-ep5.0-GA-03 FOR  
BEAM LAP CONNECTION DETAILS

00	18/11/24	DRAWING CREATED	H.B
REVn	DATE	DETAILS	INITIAL

SR000 MAY ALSO BE USED



GENERAL NOTES:

1. DISTANCE BETWEEN POSTS CANNOT EXCEED TESTED PARAMETERS. IF THE SITE CONDITIONS DO NOT ALLOW A REGULAR DISTANCE, THE POST SPACING CAN BE SHIFTED BY 300mm,
2. IF IT IS NOT POSSIBLE TO INSTALL A POST IN THE INTENDED LOCATION & USING THE TOLERANCE OF 300mm, THE POST SPACING MUST BE REDUCED WITH AN ADDITIONAL POST. THE MINIMUM DISTANCE BETWEEN THE POSTS IS STRICTLY 500mm.
3. OFFSET POSTS SHOWN ON DRAWING MR-ep5.0-GA-00 CAN BE USED (USE WITH SR541)
4. IN PRINCIPLE, THE FABRICATED SLOTS IN THE BEAM SHOULD BE USED, HOWEVER WHERE DEVIATIONS ARE REQUIRED IT IS ACCEPTABLE TO DRILL NEW HOLES IN THE DESIRED LOCATIONS, NEW HOLES TO BE TREATED WITH ZINC RICH PAINT.
5. SROO BEAM MAY ALSO BE USED AS AN ALTERNATIVE OPTION.

02	27/09/24	SR000 DETAILS ADDED	H.B
01	28/06/24	PRODUCT CODES UPDATED	H.B
00	06/06/23	DRAWING CREATED	H.B
REVn	DATE	DETAILS	INITIAL

**MEGARAIL**  
**EP 5.0 N2 W3**

## SYSTEM DEVIATION OPTIONS



CONCORD HOUSE,  
BESSEMER WAY, SCUNTHORPE,  
NORTH LINCOLNSHIRE, DN15 8XE  
t: 01724 289119  
FOR TECHNICAL ASSISTANCE CONTACT  
john.cudlipp@saferoad.co.uk

DRAWING NUMBER

REVn:

MR-ep5.0-GA-40

02