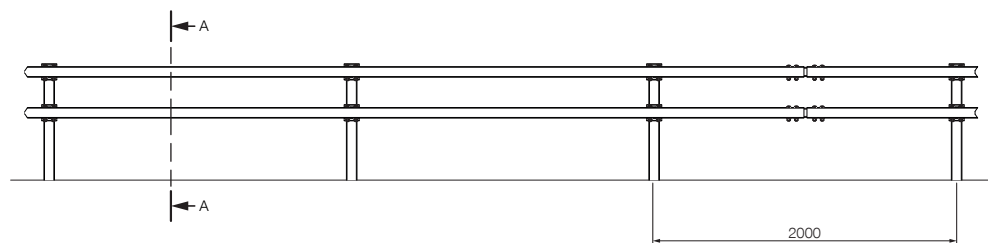
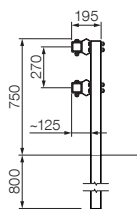


# Eco-railing 111

N1 · W1 · A



CE



## TECHNICAL SPECIFICATIONS

Normalised working width (m)	0.60
Class of normalised working width	W1
Normalised dynamic deflection (m)	0.50
Construction width (m)	0.20
Construction height (m)	0.75
Distance between posts (m)	2.00
Tested system foundation / installation	driven posts
Test length (m)	36.0