

01	16/07/24	DRAWING UPDATED	H,B
00	12/12/23	DRAWING CREATED	H,B
REVn	DATE	DETAILS	INITIAL

**MEGARAIL
SAFESTAR 221
H2W2 A VI 5**

SAFESTAR 221 COMPONENT DETAILS

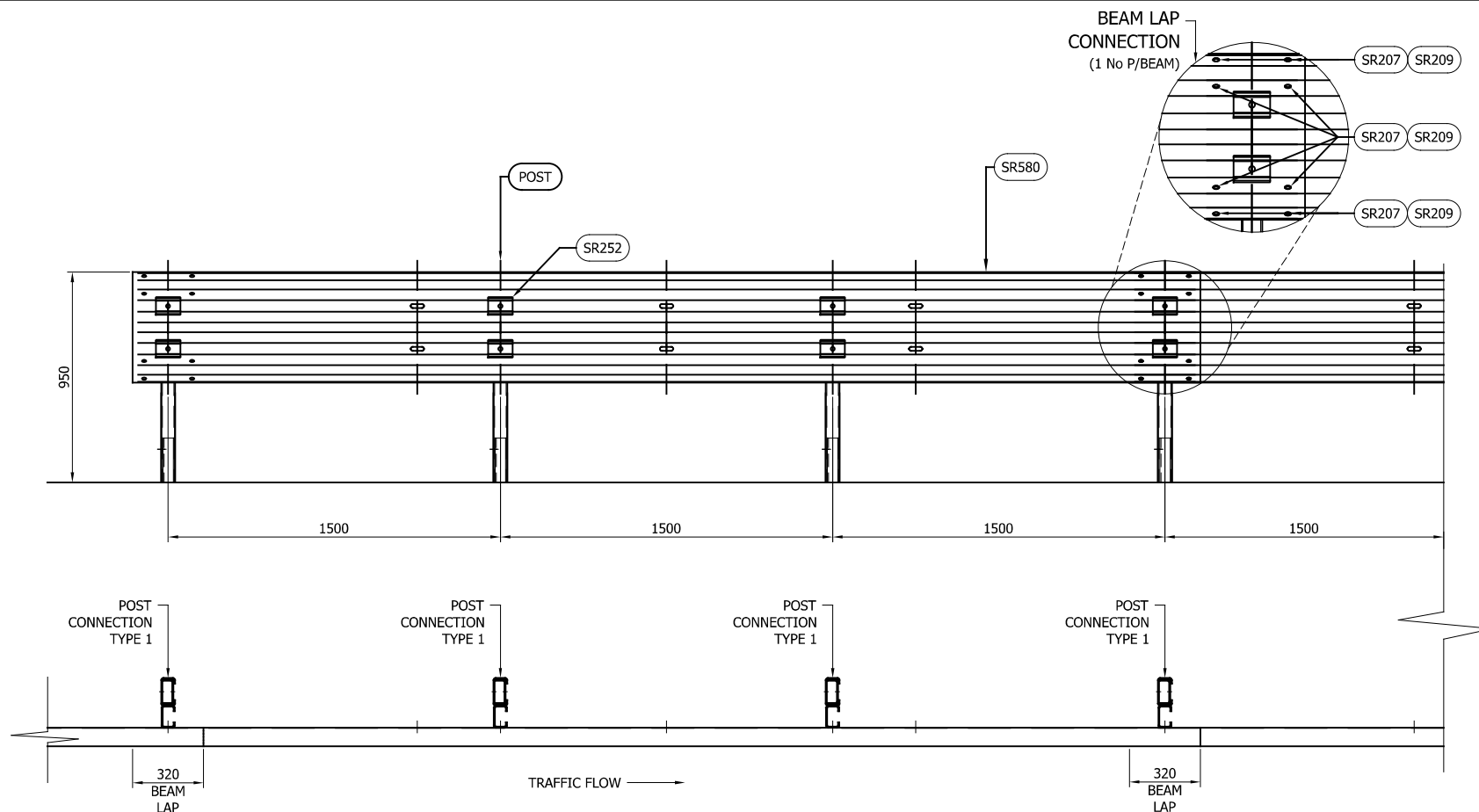


CONCORD HOUSE,
BESSEMER WAY, SCUNTHORPE,
NORTH LINCOLNSHIRE, DN15 8XE
t: 01724 289119
FOR TECHNICAL ASSISTANCE CONTACT
john.cudlipp@saferoad.co.uk

DRAWING NUMBER:	REVn:
-----------------	-------

MR-221-GA-00

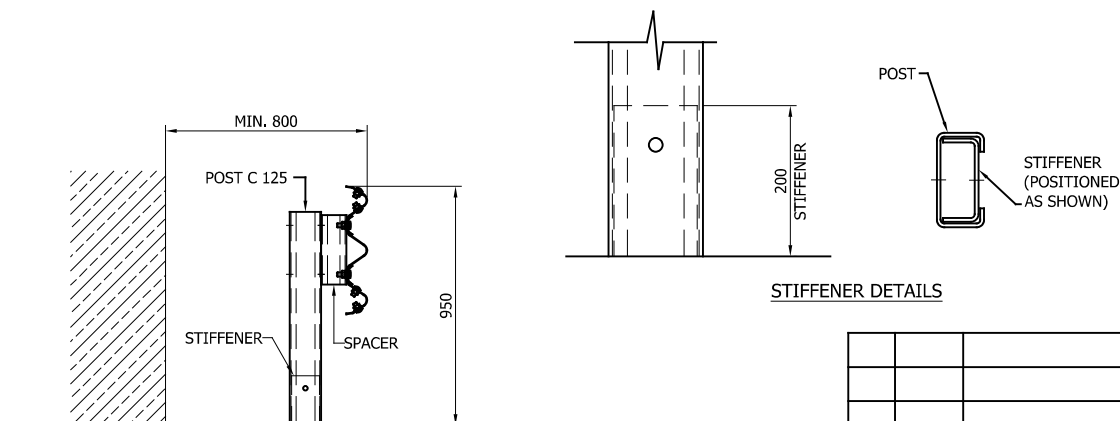
01



- GENERAL NOTES:
1. POSTS ARE TO BE INSTALLED WITH THE CLOSED FACE OF THE CHANNEL TOWARDS THE ON-COMING TRAFFIC.
 2. FOR OPTIONS ON POST FOUNDATIONS REFER TO DRAWING NUMBER MR-GA-020
 3. FOR DEVIATIONS IN SYSTEM POST PITCH REFER TO DRAWING MR-221-GA-40.
 4. WHEN TYING INTO ADJACENT VRS ONLY ONE WORKING WIDTH DIFFERENCE IS PERMITTED, SEE SYSTEM PROGRESSION DETAILS.
 5. WHERE A KERB IS PRESENT THE MAXIMUM KERB HEIGHT IS 100mm. SHOULD THE KERB BE HIGHER THAN 100mm AND THE FENCE IS SETBACK LESS THAN 250mm FROM THE FACE OF THE KERB. THE SYSTEM HEIGHT IS MEASURED FROM THE CARRIAGEWAY. IF THE SETBACK IS MORE THAN 250mm FROM THE FACE OF KERB THE SYSTEM HEIGHT IS MEASURED FROM THE TOP OF THE KERB.
 6. FOR MINIMUM LENGTH OF FULL HEIGHT VRS REFER TO SAFEROAD MEGARAIL MANUAL.

SCHEDULE OF POST COMPONENT NUMBERS AND LENGTHS	
COMPONENT NUMBER	POST LENGTH
SR255	1250
SR254	1650
SR258	2000
SR261	2400
SR267	SURFACE MOUNTED

SYSTEM COMPONENT SCHEDULE - QUANTITIES P/BEAM		
COMPONENT NUMBER	DESCRIPTION	QUANTITY
SR580	TRI-WAVE BEAM 2.5MM	1
SR253	SAFESTAR 221 SPACER BRACKET	3
SEE TABLE 'B'	POST "C" 125	3
FOR SCHEDULE OF BOLTED CONNECTIONS REFER TO DRAWING NUMBER MR-221-GA-02		



STIFFENER DETAILS

REVn	DATE	DETAILS	INITIAL
01	16/07/24	DRAWING UPDATED	H.B
00	12/12/23	DRAWING CREATED	H.B

MEGARAIL SAFESTAR 221 H2W2 A VI 5

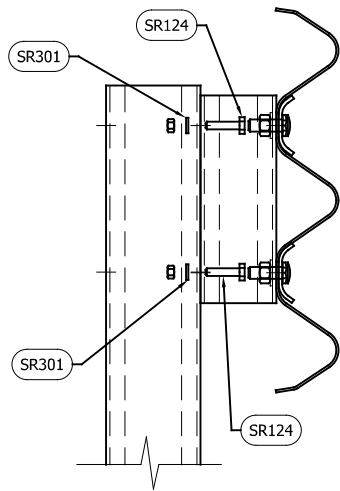
SAFESTAR 221 SYSTEM GENERAL
ARRANGEMENT & SETTING OUT
DETAILS



CONCORD HOUSE,
BESSEMER WAY, SCUNTHORPE,
NORTH LINCOLNSHIRE, DN15 8XE
t: 01724 289119
FOR TECHNICAL ASSISTANCE CONTACT
john.cudlipp@saferoad.co.uk

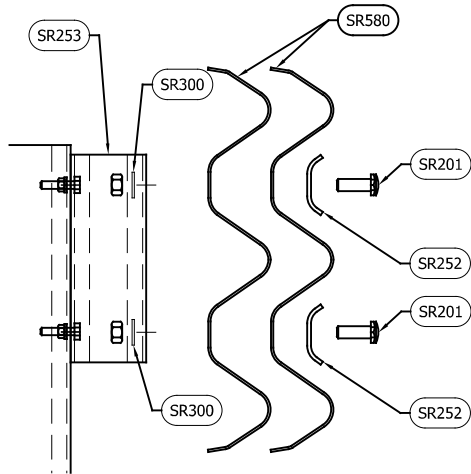
DRAWING NUMBER:	REVn:
MR-221-GA-01	01

- GENERAL NOTES:
1. NUMBERS IN THE SCHEDULES SUFFIXED (+) DENOTES THE ADDITIONAL QUANTITY OF COMPONENTS REQUIRED FOR EXTREME ENDS OF INDIVIDUAL RUNS OF BARRIER.



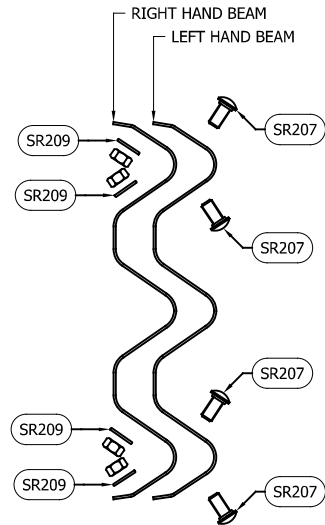
POST TO SPACER
CONNECTION
(1No. PER POST)

POST TO SPACER CONNECTION		
COMPONENT NUMBER	DESCRIPTION	QTY'S P/POST
SR124	M10x45 SETSCREW 8,8 c/w NUT	2
SR301	M10 WASHER 11Ø HOLE	2



BEAM TO SPACER
CONNECTION
(1No. PER POST)

BEAM TO SPACER CONNECTION		
COMPONENT NUMBER	DESCRIPTION	QTY'S P/POST
SR201	M16x45 SETSCREW 8,8 c/w NUT	2
SR252	CURVED WASHER PLATE M16x110x80x5	2
SR300	M16 WASHER 18Ø HOLE	2



BEAM TO BEAM CONNECTION
ARRANGEMENT
(x2 LOCATIONS / BEAM END)

BEAM TO BEAM CONNECTION		
COMPONENT NUMBER	DESCRIPTION	QTY'S P/BEAM
SR207	M16x30 PANHEAD BOLT 8,8 c/w NUT	8 (+8)
SR209	M16 WASHER 18Ø HOLE x 38	8 (+8)

01	16/07/24	DRAWING UPDATED	H.B
00	12/12/23	DRAWING CREATED	H.B
REVn	DATE	DETAILS	INITIAL

MEGARAIL
SAFESTAR 221
H2W2 A VI 5

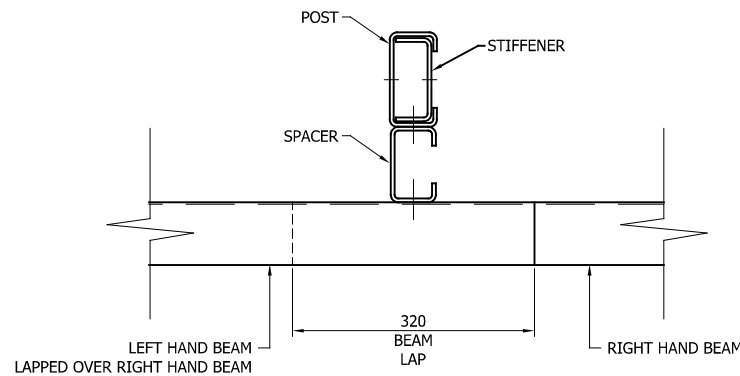
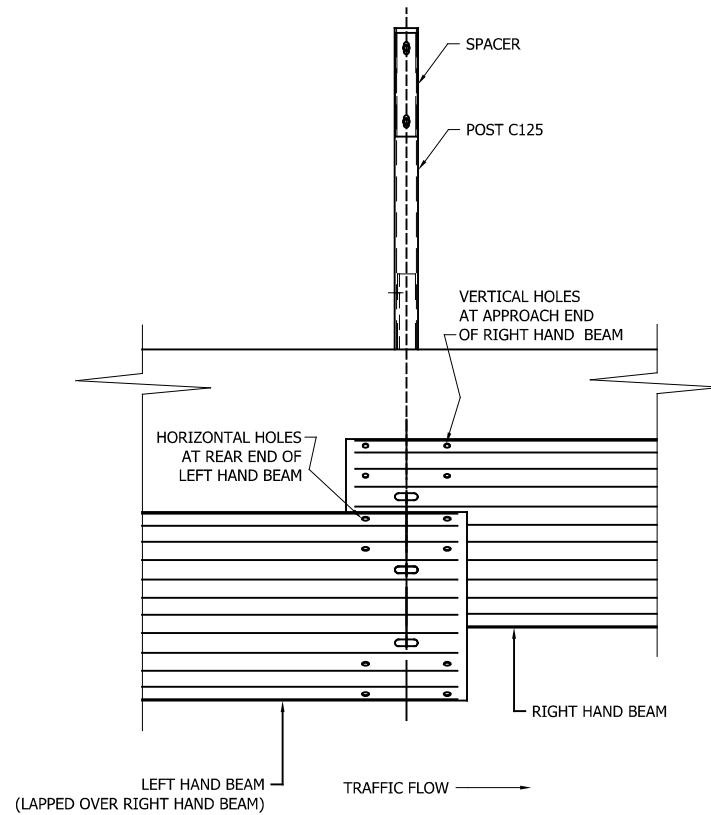
SAFESTAR 221 FIXING SCHEDULE
SCHEMATIC



CONCORD HOUSE,
BESSEMER WAY, SCUNTHORPE,
NORTH LINCOLNSHIRE, DN15 8XE
t: 01724 289119
FOR TECHNICAL ASSISTANCE CONTACT
john.cudlipp@saferoad.co.uk

DRAWING NUMBER:	REVn:
MR-221-GA-02	01

** BEAM REFERENCES i.e. LEFT / RIGHT HAND ARE FOR VERGE INSTALLATIONS; FOR CENTRAL RESERVATION INSTALLATIONS THE REFERENCES ARE REVERSED



** BEAM REFERENCES i.e. LEFT / RIGHT HAND ARE FOR VERGE INSTALLATIONS; FOR CENTRAL RESERVATION INSTALLATIONS THE REFERENCES ARE REVERSED

GENERAL NOTES:

1. POSTS ARE TO BE INSTALLED WITH THE CLOSED FACE OF THE CHANNEL TOWARDS THE ON-COMING TRAFFIC.
2. PLEASE SEE MR-221-GA-01 FOR STIFFENER INSTALLATION DETAILS

01	16/07/24	DRAWING UPDATED	H.B
00	12/12/23	DRAWING CREATED	H.B
REVn	DATE	DETAILS	INITIAL

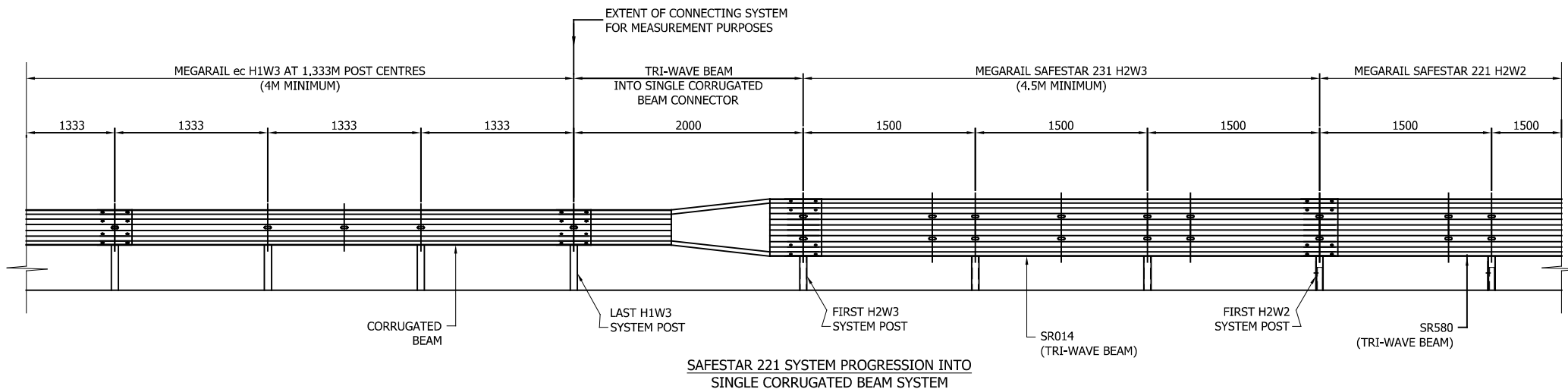
MEGARAIL SAFESTAR 221 H2W2 A VI 5

SAFESTAR 221 BEAM LAPPING
DETAILS



CONCORD HOUSE,
BESSEMER WAY, SCUNTHORPE,
NORTH LINCOLNSHIRE, DN15 8XE
t: 01724 289119
FOR TECHNICAL ASSISTANCE CONTACT
john.cudlipp@saferoad.co.uk

DRAWING NUMBER:	REVn:
MR-221-GA-03	01



TO MAINTAIN SYSTEM PROGRESSION, ONLY ONE CHANGE IN WORKING WIDTH IS PERMISSABLE AT A TIME. MINIMUM LENGTH OF 4M REQUIRED THROUGH SYSTEM PROGRESSION

FOR SYSTEM PROGRESSION INTO OTHER TRI-WAVE BEAM SYSTEMS, NO TRI-WAVE TO CORRUGATE CONNECTOR REQUIRED

MEGARAIL SAFESTAR 221 H2W2 A VI 5

SAFESTAR 221 SYSTEM
PROGRESSION INTO SINGLE
CORRUGATED BEAM SYSTEM



CONCORD HOUSE,
BESSEMER WAY, SCUNTHORPE,
NORTH LINCOLNSHIRE, DN15 8XE
t: 01724 289119
FOR TECHNICAL ASSISTANCE CONTACT
john.cudlipp@saferoad.co.uk

GENERAL NOTES:

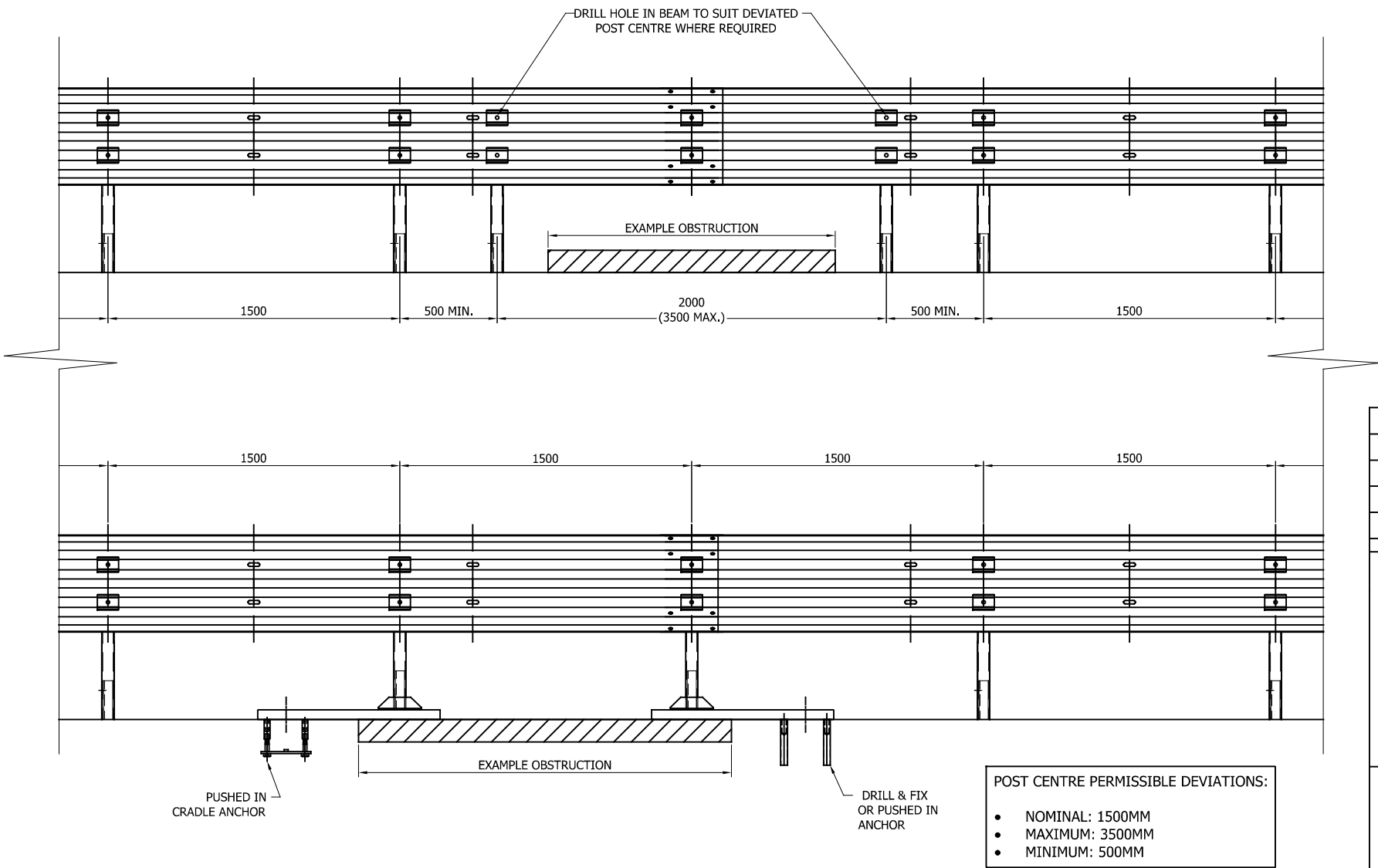
1. POSTS ARE TO BE INSTALLED WITH THE CLOSED FACE OF THE CHANNEL TOWARDS THE ON-COMING TRAFFIC.

** BEAM REFERENCES i.e. LEFT / RIGHT HAND ARE FOR VERGE INSTALLATIONS; FOR CENTRAL RESERVATION INSTALLATIONS THE REFERENCES ARE REVERSED

01	16/07/24	DRAWING UPDATED	H.B
00	12/12/23	DRAWING CREATED	H.B
REVn	DATE	DETAILS	INITIAL

DRAWING NUMBER:	REVn:
MR-221-GA-20	01

- GENERAL NOTES:
1. IF THE SITE CONDITIONS DO NOT ALLOW A POST TO BE INSTALLED ON THE SYSTEM PITCH DEVIATIONS CAN BE APPLIED. THE OBSTRUCTED POST CAN BE LEFT OUT AND EXTRA POSTS INSTALLED TO SPAN THE OBSTRUCTION AS PER THIS DRAWING. ALTHOUGH IT WOULD BE BENEFICIAL TO USE THE HOLES ALREADY IN THE BEAM IT IS ACCEPTABLE TO DRILL NEW HOLES IN THE DESIRED POSITIONS AND TREAT WITH ZINC RICH PAINT.
 2. OFFSET POSTS SHOWN ON DRAWING MR-221-GA-00 CAN BE USED.



- POST CENTRE PERMISSIBLE DEVIATIONS:
- NOMINAL: 1500MM
 - MAXIMUM: 3500MM
 - MINIMUM: 500MM

01	16/07/24	DRAWING UPDATED	H.B
00	12/12/23	DRAWING CREATED	H.B
REVn	DATE	DETAILS	INITIAL

**MEGARAIL
SAFESTAR 221
H2W2 A VI 5**
H2.W2 VEHICLE RESTRAINT SYSTEM
PERMISSIBLE DEVIATION DETAILS

SAFEROAD
CONCORD HOUSE,
BESSEMER WAY, SCUNTHORPE,
NORTH LINCOLNSHIRE, DN15 8XE
t: 01724 289119
FOR TECHNICAL ASSISTANCE CONTACT
john.cudlipp@saferoad.co.uk

DRAWING NUMBER:	REVn:
MR-221-GA-40	01