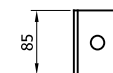
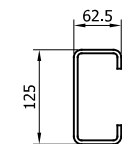
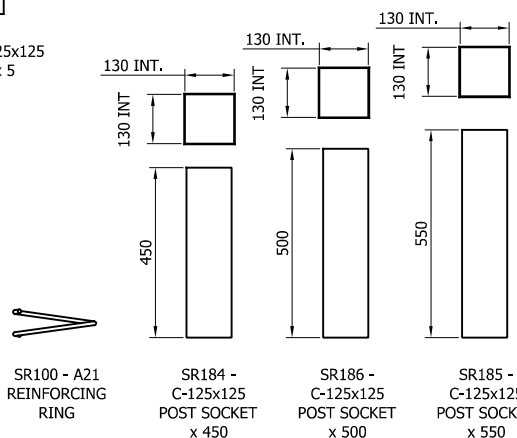


SR348 - "C" 125x125
2400mm x 5



05	08/12/23	PART NUMBERS UPDATED	H.B
04	11/09/23	WASHER PLATE CODE CHANGE	H.B
03	18/05/23	TITLEBLOCK UPDATED	H.B
02	10/02/23	SMP DETAIL UPDATE	H.B
01	06/02/23	M12 BOLT DETAIL CHANGE	H.B
00	30/08/22	DRAWING CREATED	H.B
REVn	DATE	DETAILS	INITIAL

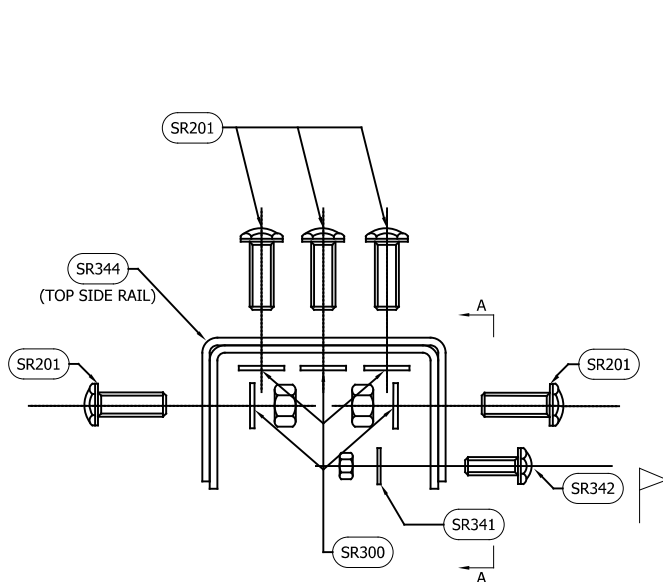
MEGARAIL xp H1W3/N2W2 VI4

MEGARAIL xp VEHICLE RESTRAINT
SYSTEM COMPONENTS SCHEMATIC

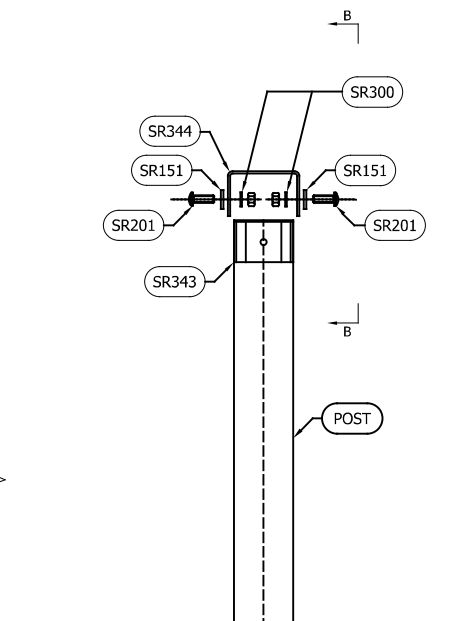


CONCORD HOUSE,
BESSEMER WAY, SCUNTHORPE,
NORTH LINCOLNSHIRE, DN15 8XE
t: 01724 289119
FOR TECHNICAL ASSISTANCE CONTACT
john.cudlipp@saferoad.co.uk

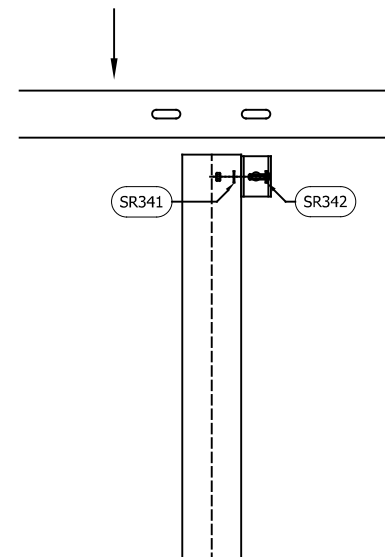
DRAWING NUMBER:	REVn:
MR-xp-GA-00	05



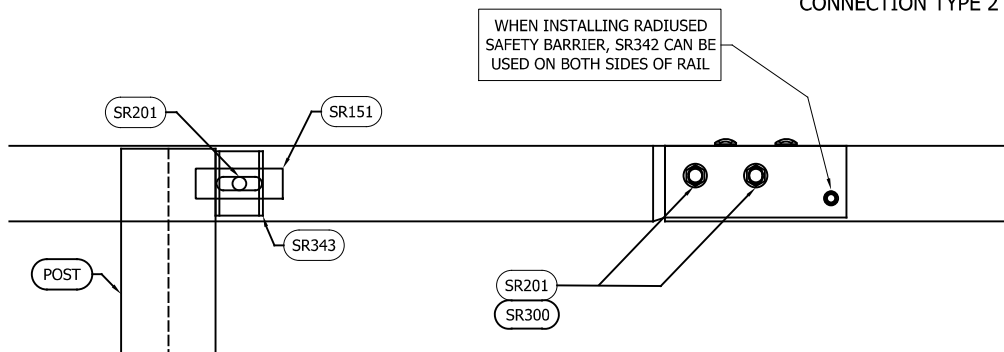
RAIL TO RAIL CONNECTION
ARRANGEMENT
CONNECTION TYPE 1



TOP RAIL TO POST
(THROUGH SPACER)
CONNECTION TYPE 2



POST SPACER TO POST
(VIEW AT TRAFFIC FACE)
CONNECTION TYPE 3



VIEW ON B-B
(TOP RAIL TO POST ELEVATION)
CONNECTION TYPE 2

VIEW ON A-A
(RAIL LAP ELEVATION)
CONNECTION TYPE 1

GENERAL NOTES:

- NUMBERS IN THE SCHEDULES SUFFIXED (+) DENOTES THE ADDITIONAL QUANTITY OF COMPONENTS REQUIRED FOR EXTREME ENDS OF INDIVIDUAL RUNS OF BARRIER OR FOR NOTED PURPOSE.
- M12 BOLT PREDOMINANTLY INSTALLED ON SIDE WHERE RAIL LAP HAS TRAFFIC FLOWING TOWARDS UN-COVERED EXTREME EDGE OF TOP SIDE RAIL.

BOLTING COMPONENT SCHEDULE - QTY'S / RAIL TO RAIL CONNECTION - CONNECTION TYPE 1 (1No. P/RAIL)		
SAFEROAD PART NUMBER	DESCRIPTION	RAIL TO RAIL CONNECTION
SR201	SETSCREW 8.8 M16 x 45 c/w NUT	7
SR300	M16 WASHER 18Ø HOLE	7
SR342	SETSCREW 8.8 M12 x 35 c/w NUT	1 (+1)
SR341	M12 WASHER 13.5Ø HOLE	1 (+1)

BOLTING COMPONENT SCHEDULE - QTY'S PER RAIL TO POST CONNECTION - CONNECTION TYPE 2		
SAFEROAD PART NUMBER	DESCRIPTION	QTY P/RAIL TO POST CONNECTION
SR201	SETSCREW 8.8 M16 x 45 c/w NUT	2
SR151	WASHER PLATE 115 x 40 x 6 DIA. 18	2
SR300	M16 WASHER 18Ø HOLE	2

BOLTING COMPONENT SCHEDULE - QTY'S / POST SPACER TO POST - CONNECTION TYPE 3 (1No. P/POST)		
SAFEROAD PART NUMBER	DESCRIPTION	RAIL JOINT CONNECTION
SR342	SETSCREW 8.8 M12 x 35 c/w NUT	1
SR341	M12 WASHER 13.5Ø HOLE	1

05	08/12/23	PART NUMBERS UPDATED	H.B
04	11/09/23	WASHER PLATE CODE CHANGE	H.B
03	18/05/23	TITLEBLOCK UPDATED	H.B
02	13/02/23	FIXING DETAILS UPDATED	H.B
01	06/02/23	FIXING DETAILS UPDATED	H.B
00	30/08/22	DRAWING CREATED	H.B
REVn	DATE	DETAILS	INITIAL

MEGARAIL xp H1W3/N2W2 VI4

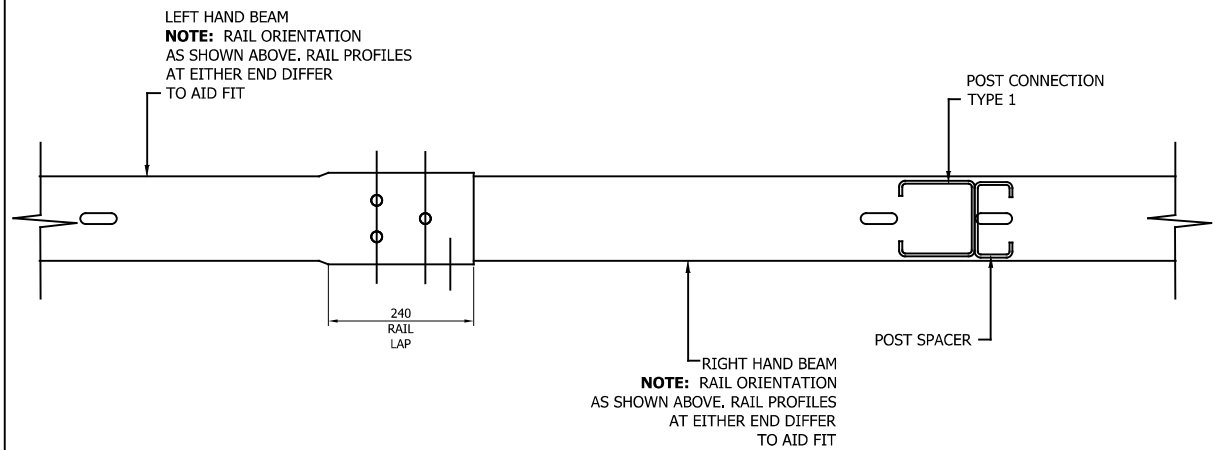
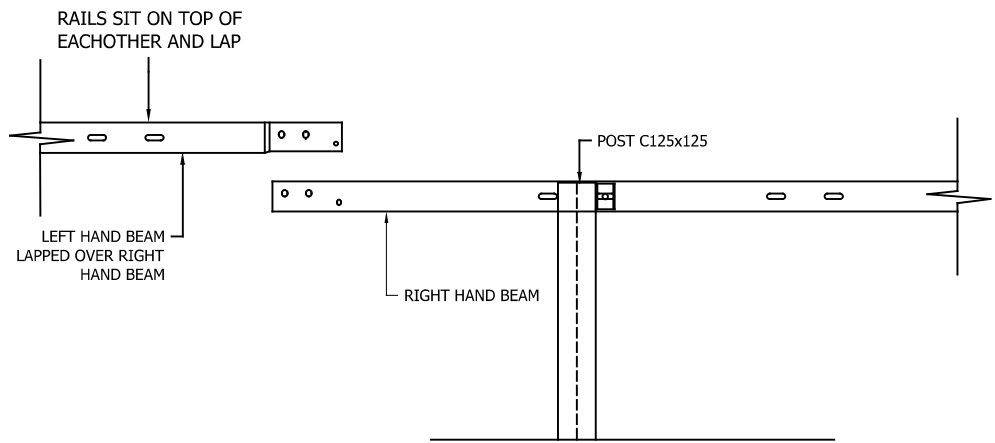
MEGARAIL xp VEHICLE RESTRAINT
SYSTEM BOLTING ARRANGEMENTS



CONCORD HOUSE,
BESSEMER WAY, SCUNTHORPE,
NORTH LINCOLNSHIRE, DN15 8XE
t: 01724 289119
FOR TECHNICAL ASSISTANCE CONTACT
john.cudlipp@saferoad.co.uk

DRAWING NUMBER:	REVn:
MR-xp-GA-02	05

- GENERAL NOTES:
1. POST ORIENTATION TO BE FLIPPED EVERY 2.25M



REVn	DATE	DETAILS	INITIAL
03	08/12/23	LOGO UPDATED	H.B
02	18/05/23	TITLEBLOCK UPDATED	H.B
01	06/02/23	HIDDEN DETAIL REMOVED	H.B
00	30/08/22	DRAWING CREATED	H.B

MEGARAIL xp

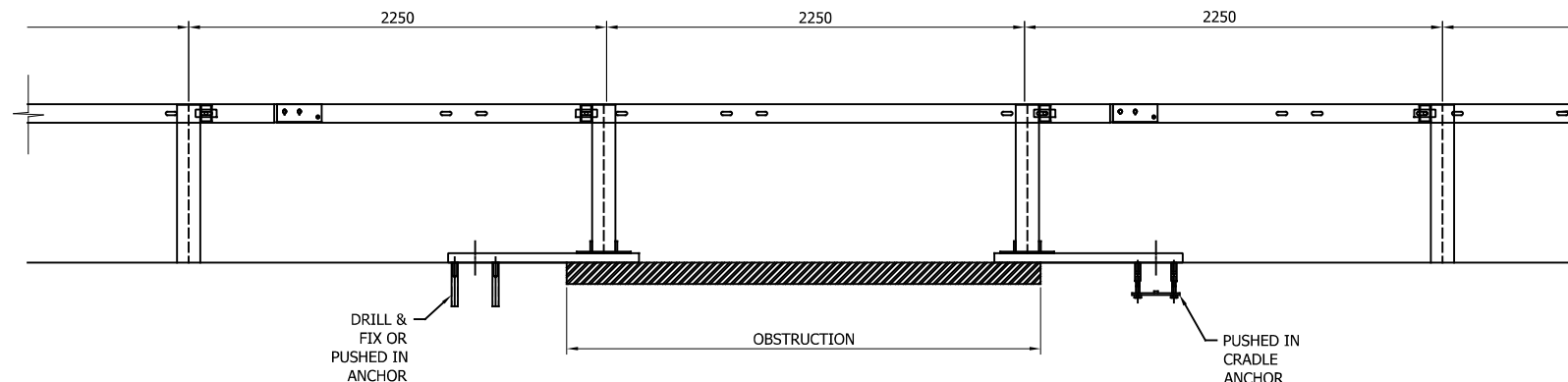
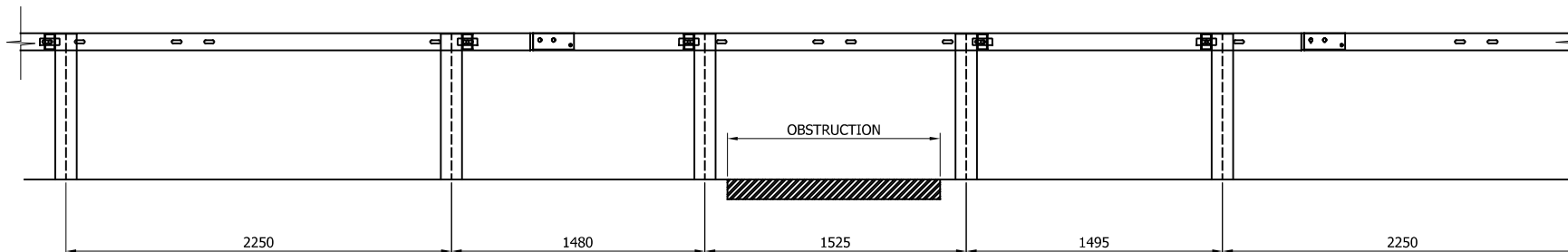
H1W3/N2W2 VI4

MEGARAIL xp VEHICLE RESTRAINT
SYSTEM RAIL LAPPING DETAIL FOR
H1 & N2 MEGARAIL SYSTEM



CONCORD HOUSE,
BESSEMER WAY, SCUNTHORPE,
NORTH LINCOLNSHIRE, DN15 8XE
t: 01724 289119
FOR TECHNICAL ASSISTANCE CONTACT
john.cudlipp@saferoad.co.uk

DRAWING NUMBER:	REVn:
MR-xp-GA-03	03



GENERAL NOTES:

1. IF THE SITE CONDITIONS DO NOT ALLOW A POST TO BE INSTALLED ON THE SYSTEM PITCH DEVIATIONS CAN BE APPLIED. THE OBSTRUCTED POST CAN BE LEFT OUT AND EXTRA POSTS INSTALLED TO SPAN THE OBSTRUCTION. THE NEW POST SPACING MUST NOT EXCEED 2250mm, ALTHOUGH IT WOULD BE BENEFICIAL TO USE THE HOLES ALREADY IN THE BEAM IT IS ACCEPTABLE TO DRILL NEW HOLES IN THE DESIRED POSITIONS AND TREAT WITH ZINC RICH PAINT.
2. OFFSET POSTS SHOWN ON DRAWING MR-xp-GA-00 CAN BE USED.

REVn	DATE	DETAILS	INITIAL
03	08/12/23	LOGO UPDATED	H,B
02	18/05/23	TITLEBLOCK UPDATED	H,B
01	10/02/23	SMP DETAIL UPDATE	H,B
00	30/08/22	DRAWING CREATED	H,B

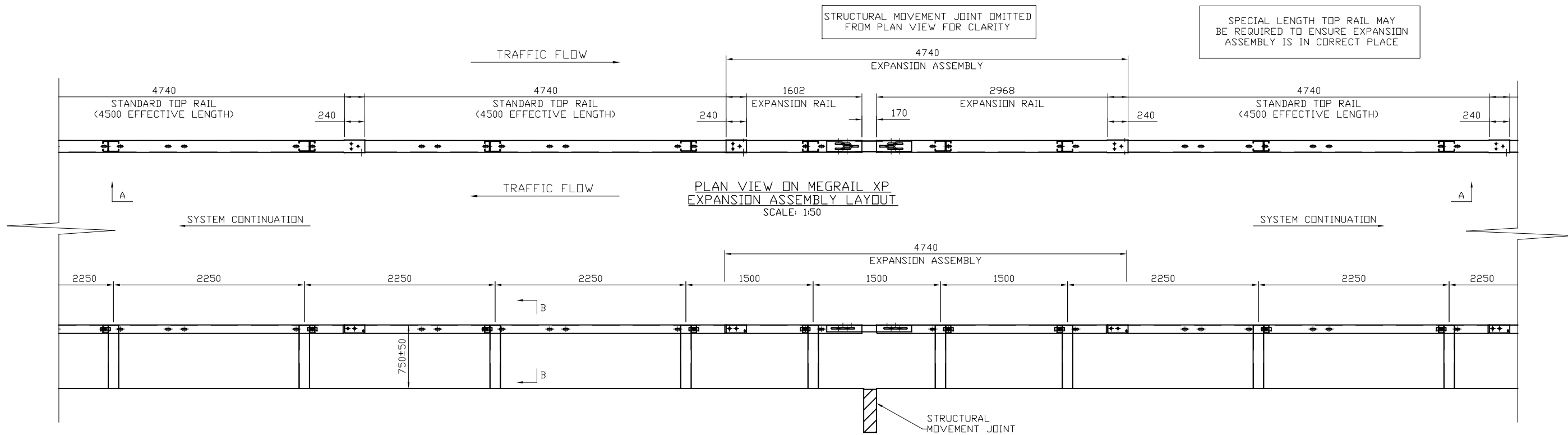
MEGARAIL xp H1W3/N2W2 VI4

MEGARAIL xp VEHICLE RESTRAINT SYSTEM
DEVIATION SETTING OUT
ARRANGEMENT

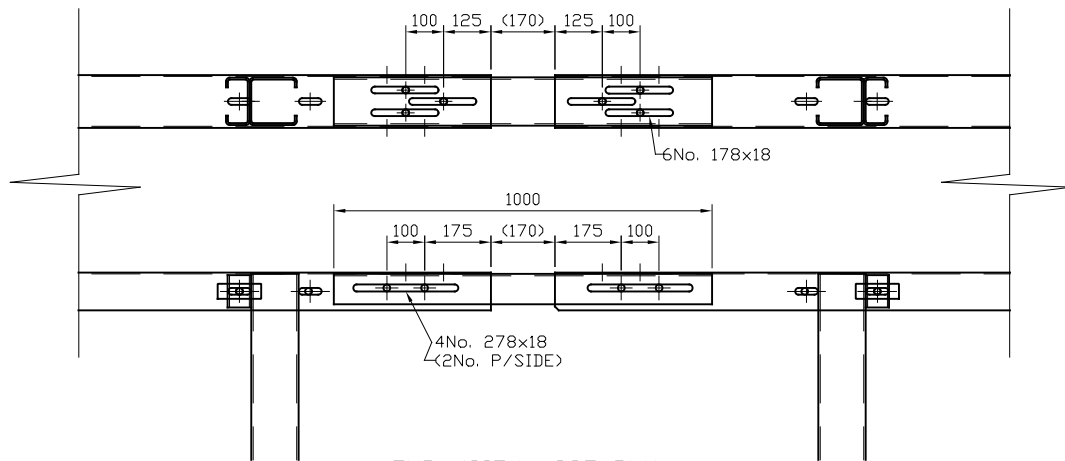


CONCORD HOUSE,
BESSEMER WAY, SCUNTHORPE,
NORTH LINCOLNSHIRE, DN15 8XE
t: 01724 289119
FOR TECHNICAL ASSISTANCE CONTACT
john.cudlipp@saferoad.co.uk

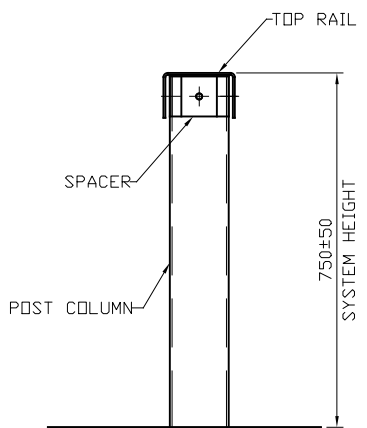
DRAWING NUMBER:	REVn:
MR-xp-GA-40	03



A-A
(ELEVATION ON EXPANSION ASSEMBLY)
SCALE: 1:50



EXPANSION ASSEMBLY
DETAILS
SCALE: 1:20



B-B
SYSTEM SECTION THROUGH
SCALE: 1:16

GENERAL NOTES;

1. ALL DIMENSIONS IN MILLIMETRES UNLESS NOTED OTHERWISE.
2. FOR GENERAL DETAILS REGARDING MEGARAIL XP, SEE SYSTEM MANUAL DRAWINGS
3. FOR MINIMUM LENGTH OF FULL HEIGHT VRS, REFER TO SAFEROAD MEGARAIL MANUAL
4. SPECIAL LENGTH TOP RAIL MAY BE REQUIRED TO ENSURE EXPANSION ASSEMBLY IS INSTALLED IN THE CORRECT PLACE.
5. POST ORIENTATION REVERSED ON EVERY OTHER POST

MEGARAIL XP
H1W3/N2W2 VI4

GENERAL ARRANGEMENT DETAILS
FOR EXPANSION ASSEMBLY

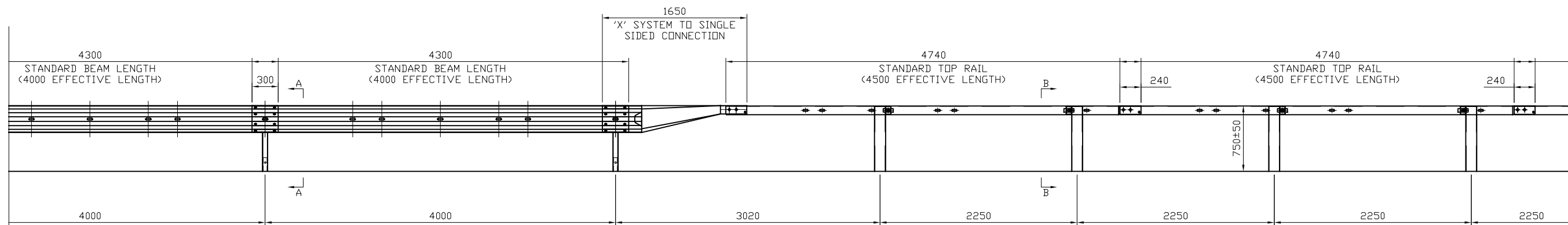


CONCORD HOUSE,
BESSEMER WAY, SCUNTHORPE,
NORTH LINCOLNSHIRE, DN15 8XE
T: 01724 289119
FOR TECHNICAL ASSISTANCE CONTACT
john.cudlipp@saferoad.co.uk

01	17/11/23	LOGO UPDATED	H.B
00	22.03.23	DRAWING CREATED	H.B
REVn	DATE	DETAILS	INITIAL

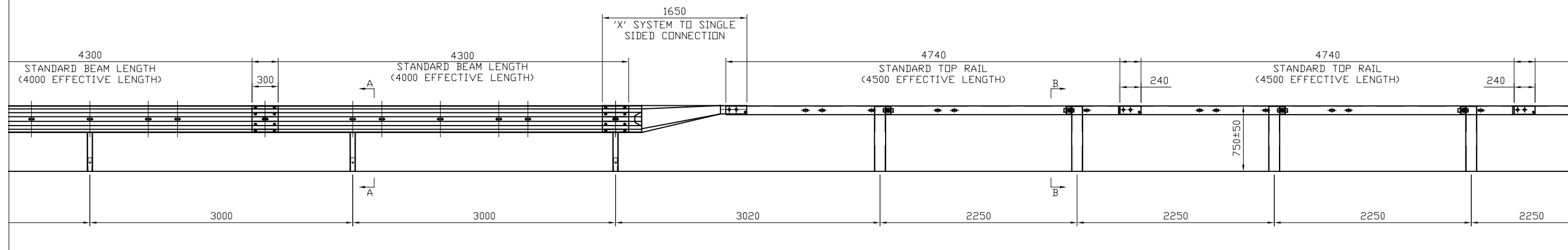
DRAWING NUMBER:	REV 01
MR-XP-GA-41	01

CONNECTION INTO MEGARAIL EP & MEGARAIL EX
ALSO PERMITTED TO BE BIFURCATION TYPE
WITH APPLICABLE CONNECTOR CHANGE



ELEVATION ON MEGARAIL XP CONNECTION
INTO MEGARAIL EP
SCALE: 1:50

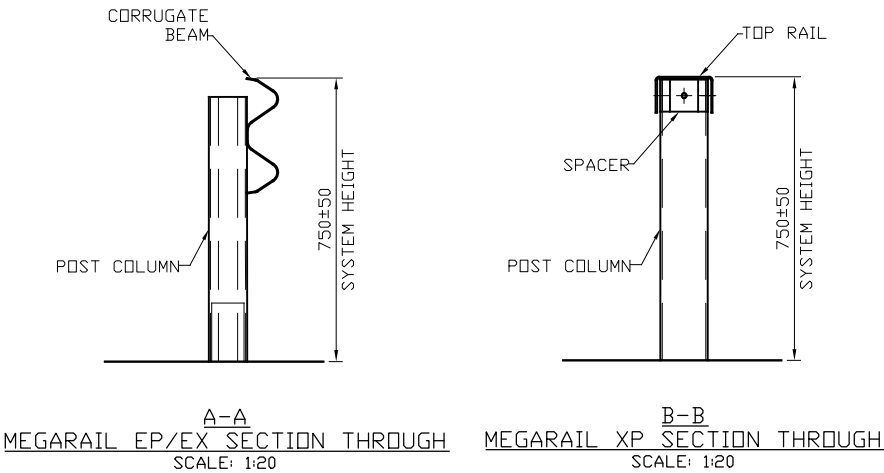
MEGARAIL XP SYSTEM
POST ORIENTATION MIRRORED
AT EACH POST LOCATION



ELEVATION ON MEGARAIL XP CONNECTION
INTO MEGARAIL EX
SCALE: 1:50

GENERAL NOTES;

- ALL DIMENSIONS IN MILLIMETRES UNLESS NOTED OTHERWISE.
- FOR GENERAL DETAILS REGARDING MEGARAIL XP, SEE SYSTEM MANUAL DRAWINGS
- FOR GENERAL DETAILS REGARDING MEGARAIL EX, SEE SYSTEM MANUAL DRAWINGS
- FOR GENERAL DETAILS REGARDING MEGARAIL EP, SEE SYSTEM MANUAL DRAWINGS
- FOR MINIMUM LENGTH OF FULL HEIGHT VRS, REFER TO SAFEROAD MEGARAIL MANUAL
- FOR MEGARAIL 'X' SYSTEMS, POST ORIENTATION MIRRORED AT EACH POST LOCATION



A-A
MEGARAIL EP/EX SECTION THROUGH
SCALE: 1:20

B-B
MEGARAIL XP SECTION THROUGH
SCALE: 1:20

MEGARAIL XP
H1W3/N2W2 VI4

SINGLE SIDED OR BIFURCATION
CONNECTION MEGARAIL EP N2W2
& MEGARAIL EX H1W2



CONCORD HOUSE,
BESSEMER WAY, SCUNTHORPE,
NORTH LINCOLNSHIRE, DN15 8XE
T: 01724 289119
FOR TECHNICAL ASSISTANCE CONTACT
john.cudlipp@saferoad.co.uk

01	17/11/23	LOGO UPDATED	H.B
00	17.05.23	DRAWING CREATED	H.B
REVn	DATE	DETAILS	INITIAL

DRAWING NUMBER:	REVn:
MR-XP-GA-42	01