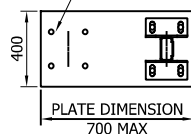
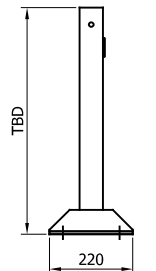
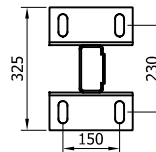
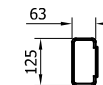
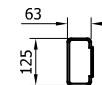
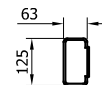
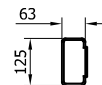


CAN BE FIXED WITH
CAST IN ANCHORS, DRILL
AND FIX ANCHORS OR
PUSHED IN ANCHORS
AT 180x180 CENTERS



BASEPLATE DRILL &
TAPPED FOR LIFTING EYE



SURFACE MOUNTED -
TYPE 'B' C-125 POST

SR049 - TYPE 'B' POST "C"
125
1100mm x 5

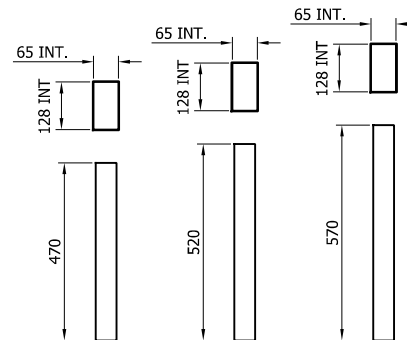
SR047 - TYPE 'B' POST
"C" 125 1800mm x 5

SR048 - TYPE 'B' POST
"C" 125 2000mm x 5

SR037 - TYPE 'B' POST
"C" 125 2400mm x 5



NP001 - A21
REINFORCING
RING



SR080 - C-125
POST SOCKET
x 470

SR081 - C-125
POST SOCKET
x 520

SR083 - C-125
POST SOCKET
x 570

| 08 | 12/01/23 | M10 x 45 BOLT AMENDMENTS | H.B |
|------|----------|--------------------------------------|---------|
| 07 | 13/05/22 | SURFACE MOUNTED POST BASE CHANGED | A.D |
| 06 | 27/05/21 | DETAILS REVISED | M.T |
| 05 | 19/11/19 | BEAM DETAILS ADDED | M.T |
| 04 | 12/02/19 | TITLEBLOCK REVISED | M.T |
| 03 | 10/03/17 | OFFSET POST REVISED | L.L |
| 02 | 01/02/17 | DETAILS REVISED | L.L |
| 1.3 | 20/05/15 | DETAILS REVISED | M.T |
| REVn | DATE | DETAILS | INITIAL |

MegaRail ec3.3 H1 W3 (VI4)

H1.W3 VEHICLE RESTRAINT SYSTEM
COMPONENTS SCHEMATIC

SAFEROAD®

CONCORD HOUSE,
BESSEMER WAY, SCUNTHORPE,
NORTH LINCOLNSHIRE, DN15 8XE
t: 01724 289119

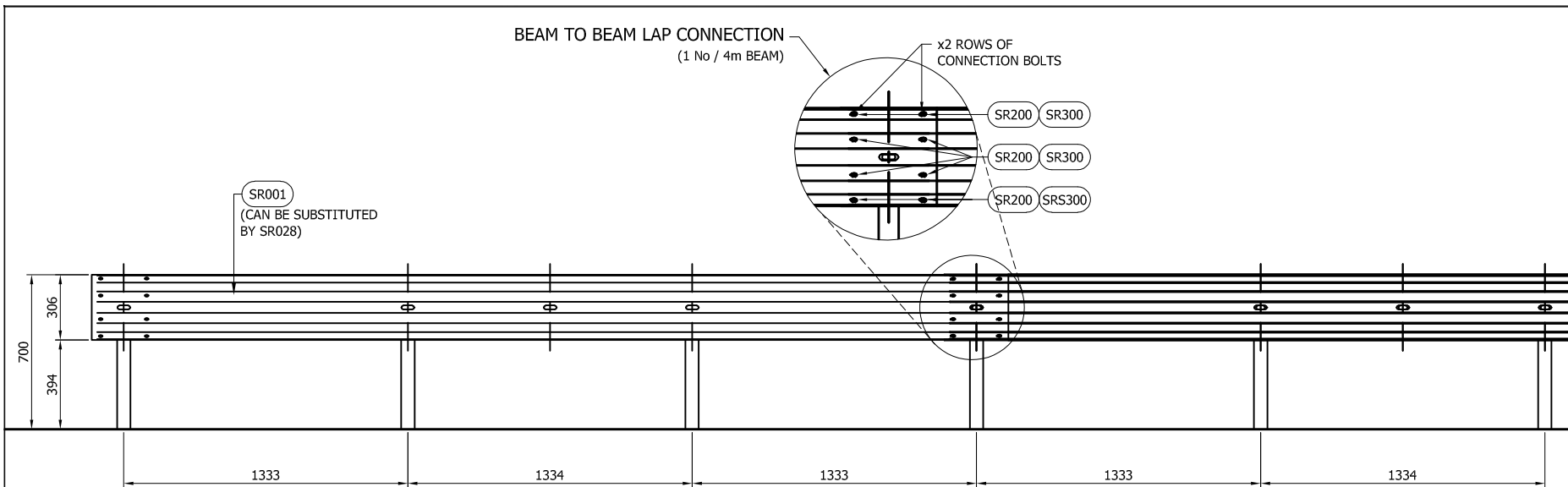
e: john.cudlipp@saferoad.co.uk

DRAWING NUMBER:

H1W3-GA-00

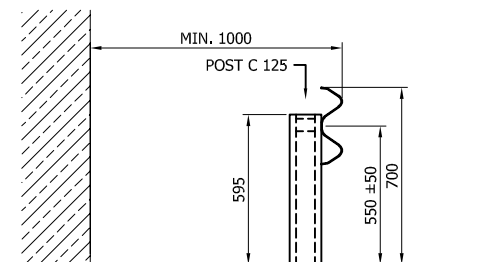
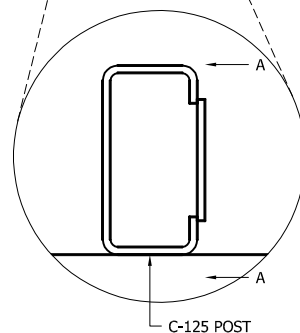
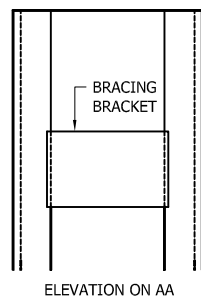
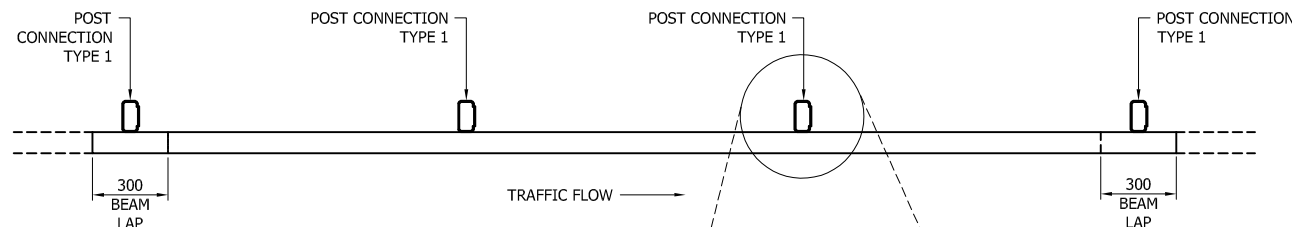
REVn:

08



GENERAL NOTES:

1. POSTS ARE TO BE INSTALLED WITH THE CLOSED FACE OF THE CHANNEL TOWARDS THE ON-COMING TRAFFIC.
2. FOR OPTIONS ON POST FOUNDATIONS REFER TO DRAWING NUMBER MR-GA-020
3. WHEN TYING INTO ADJACENT VRS ONLY ONE WORKING WIDTH DIFFERENCE IS PERMITTED.
5. WHERE A KERB IS PRESENT THE MAXIMUM KERB HEIGHT IS 100mm. SHOULD THE KERB BE HIGHER THAN 100mm AND THE FENCE IS SETBACK LESS THAN 250mm FROM THE FACE OF THE KERB, THE SYSTEM HEIGHT IS MEASURE FROM THE CARRIAGEWAY. IF THE SETBACK IS MORE THAN 250mm FROM THE FACE OF KERB THE SYSTEM HEIGHT IS MEASURED FROM THE TOP OF THE KERB.
6. FOR MINIMUM LENGTH OF FULL HEIGHT VRS REFER TO SAFEROAD MEGARAIL MANUAL.
7. FOR DEVIATIONS IN SYSTEM POST PITCH REFER TO DRAWING H1W4-GA-40.



| TABLE 'A' - SYSTEM COMPONENT SCHEDULE - QUANTITIES / 4m BEAM | | |
|---|--|----------|
| SAFEROAD UK PART NUMBER | DESCRIPTION | QUANTITY |
| SR001 | BEAM "A" PROFILE (CAN BE SUBSTITUTED BY SR028) | 1 |
| SEE TABLE 'B' | POST "C" 125 c/w BRACKET | 3 |
| FOR SCHEDULE OF BOLTED CONNECTIONS REFER TO DRAWING NUMBER H1W3-GA-02 | | |

| TABLE 'B' - SCHEDULE OF POST REFERENCE NUMBERS AND LENGTHS | |
|--|-------------|
| SAFEROAD UK PART NUMBER | POST LENGTH |
| SR049 | 1100 |
| SR047 | 1800 |
| SR048 | 2000 |
| SR037 | 2400 |

| REV | DATE | DETAILS | INITIAL |
|-----|----------|--------------------|---------|
| 04 | 19/11/19 | BEAM DETAILS ADDED | M.T |
| 03 | 12/02/19 | TITLEBLOCK REVISED | M.T |
| 02 | 01/02/17 | DETAILS REVISED | L.L |
| 1.3 | 20/05/15 | DETAILS REVISED | M.T |

MegaRail ec3.3 H1 W3 (VI4)

H1.W3 VEHICLE RESTRAINT SYSTEM
ASSEMBLY & SETTING OUT
ARRANGEMENT

SAFEROAD®

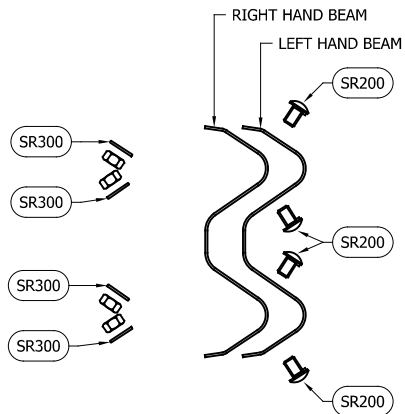
CONCORD HOUSE,
BESSEMER WAY, SCUNTHORPE,
NORTH LINCOLNSHIRE, DN15 8XE
t: 01724 289119
e: john.cudlipp@saferoad.co.uk

DRAWING NUMBER:

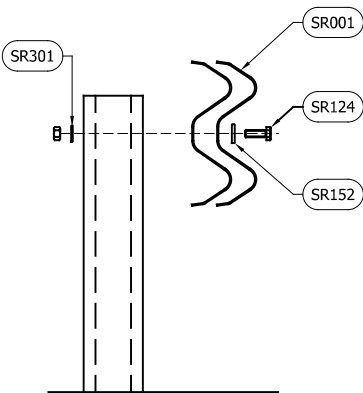
H1W3-GA-01

REV:

04



BEAM TO BEAM CONNECTION
ARRANGEMENT
(x2 LOCATIONS / BEAM END)



BEAM TO POST
CONNECTION TYPE 1

| BOLTING COMPONENT SCHEDULE - QUANTITIES / BEAM | | |
|--|---------------------------------|-------------------------|
| SAFEROAD UK PART NUMBER | DESCRIPTION | BEAM TO BEAM CONNECTION |
| SR200 | SETSCREW 4.6 LIP M16x27 c/w NUT | 8 (+8) |
| SR300 | WASHER M16 18Ø HOLE | 8 (+8) |

| BOLTING COMPONENT SCHEDULE - QUANTITIES / POST | | |
|--|-----------------------------------|-------------------|
| SAFEROAD UK PART NUMBER | DESCRIPTION | TYPE 1 CONNECTION |
| SR124 | SETSCREW 8.8 M10 x 45 c/w NUT | 1 |
| SR152 | WASHER PLATE 115 x 40 x 5 DIA. 12 | 1 |
| SR301 | M10 WASHER 11Ø HOLE | 1 |
| QUANTITY OF CONNECTION TYPES / 4m BEAM | | |
| | | 3 (+1) |

** BEAM REFERENCES i.e. LEFT / RIGHT HAND ARE FOR VERGE INSTALLATIONS; FOR CENTRAL RESERVATION INSTALLATIONS THE REFERENCES ARE REVERSED

GENERAL NOTES:
1. NUMBERS IN THE SCHEDULES SUFFIXED (+) DENOTES THE ADDITIONAL QUANTITY OF COMPONENTS REQUIRED FOR EXTREME ENDS OF INDIVIDUAL RUNS OF BARRIER.

| | | | |
|------|----------|--------------------------|---------|
| 05 | 12/01/23 | M10 x 45 BOLT AMENDMENTS | H,B |
| 04 | 26/05/21 | NOTES REVISED | M,T |
| 03 | 12/02/19 | DETAILS REVISED | M,T |
| 02 | 01/02/17 | DETAILS REVISED | L,L |
| 1.3 | 20/05/15 | NOTES REVISED | M,T |
| REVn | DATE | DETAILS | INITIAL |

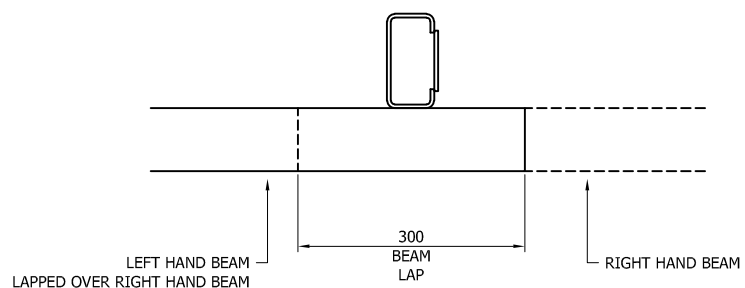
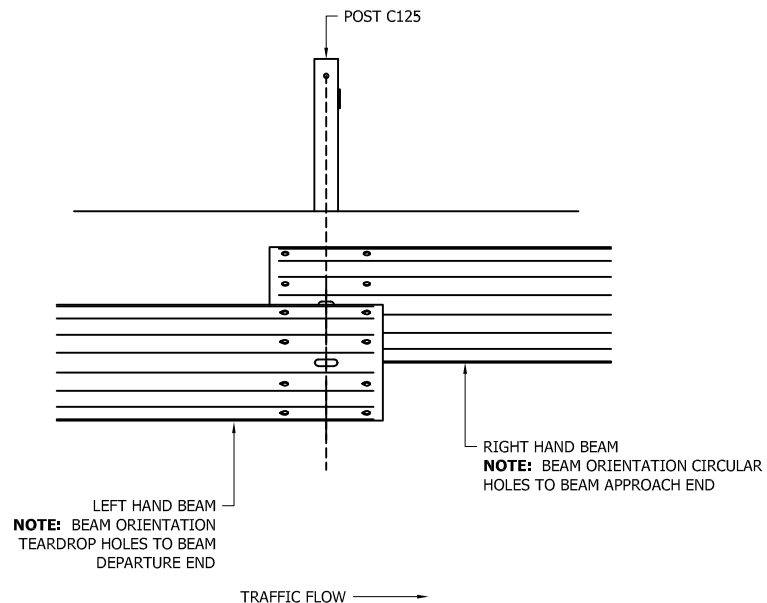
MegaRail ec3.3
H1 W3 (VI4)
H1.W3 VEHICLE RESTRAINT SYSTEM
BOLTING ARRANGEMENTS

SAFEROAD®
CONCORD HOUSE,
BESSEMER WAY, SCUNTHORPE,
NORTH LINCOLNSHIRE, DN15 8XE
t: 01724 289119
e: john.cudlipp@saferoad.co.uk

| | |
|-----------------|-------|
| DRAWING NUMBER: | REVn: |
| H1W3-GA-02 | 05 |

GENERAL NOTES:

1. POSTS ARE TO BE INSTALLED WITH THE CLOSED FACE OF THE CHANNEL TOWARDS THE ON-COMING TRAFFIC.



** BEAM REFERENCES i.e. LEFT / RIGHT HAND ARE FOR VERGE INSTALLATIONS; FOR CENTRAL RESERVATION INSTALLATIONS THE REFERENCES ARE REVERSED

| REVn | DATE | DETAILS | INITIAL |
|------|----------|--------------------|---------|
| 03 | 12/02/19 | TITLEBLOCK REVISED | M.T |
| 02 | 01/02/17 | DETAILS REVISED | L.L |
| 1.3 | 20/05/15 | REVn BOX ADDED | M.T |

MegaRail ec3.3 H1 W3 (VI4)

H1.W3 VEHICLE RESTRAINT SYSTEM
BEAM LAPPING DETAIL FOR H1 A W3
MEGARAIL SYSTEM

SAFEROAD®

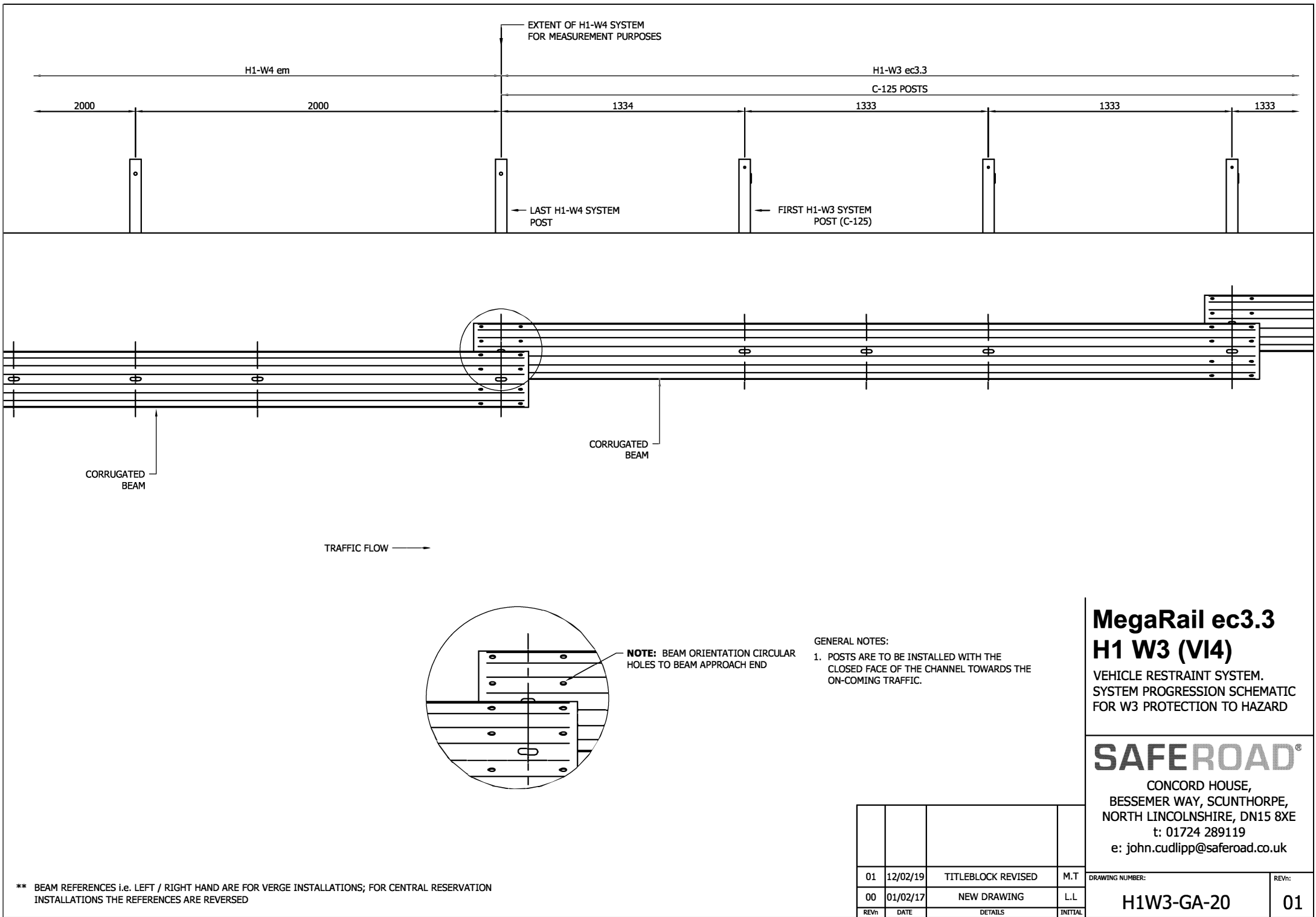
CONCORD HOUSE,
BESSEMER WAY, SCUNTHORPE,
NORTH LINCOLNSHIRE, DN15 8XE
t: 01724 289119
e: john.cudlipp@saferoad.co.uk

DRAWING NUMBER:

H1W3-GA-03

REVn:

03



** BEAM REFERENCES i.e. LEFT / RIGHT HAND ARE FOR VERGE INSTALLATIONS; FOR CENTRAL RESERVATION INSTALLATIONS THE REFERENCES ARE REVERSED

**MegaRail ec3.3
H1 W3 (VI4)**
VEHICLE RESTRAINT SYSTEM.
SYSTEM PROGRESSION SCHEMATIC
FOR W3 PROTECTION TO HAZARD

SAFEROAD®
CONCORD HOUSE,
BESSEMER WAY, SCUNTHORPE,
NORTH LINCOLNSHIRE, DN15 8XE
t: 01724 289119
e: john.cudlipp@saferoad.co.uk

- GENERAL NOTES:
1. IF THE SITE CONDITIONS DO NOT ALLOW A POST TO BE INSTALLED ON THE SYSTEM PITCH DEVIATIONS CAN BE APPLIED. THE OBSTRUCTED POST CAN BE LEFT OUT AND EXTRA POSTS INSTALLED TO SPAN THE OBSTRUCTION. THE NEW POST SPACING MUST NOT EXCEED 3000mm AND MUST NOT BE LESS THAN 500mm. ALTHOUGH IT WOULD BE BENEFICIAL TO USE THE HOLES ALREADY IN THE BEAM IT IS ACCEPTABLE TO DRILL NEW HOLES IN THE DESIRED POSITIONS AND TREAT WITH ZINC RICH PAINT.
 2. OFFSET POSTS SHOWN ON DRAWING H1W3-GA-00 CAN BE USED.

| | | | |
|------|----------|--------------------------------------|---------|
| 06 | 13/05/22 | SURFACE MOUNTED POST BASE CHANGED | A.D |
| 05 | 23/07/21 | SURFACE MOUNTED POST DETAIL ADDED | A.D |
| 04 | 25/05/21 | NOTES REVISED | M.T |
| 03 | 12/02/19 | TITLEBLOCK REVISED | M.T |
| 02 | 17/10/18 | DETAILS REVISED | M.T |
| 01 | 10/03/17 | NOTES REVISED | L.L |
| 00 | 01/02/17 | NEW DRAWING | L.L |
| REVn | DATE | DETAILS | INITIAL |

MegaRail ec3.3 H1 W3 (VI4)

H1.W3 VEHICLE RESTRAINT SYSTEM
DEVIATION SETTING OUT
ARRANGEMENT

SAFEROAD®

CONCORD HOUSE,
BESSEMER WAY, SCUNTHORPE,
NORTH LINCOLNSHIRE, DN15 8XE
t: 01724 289119
e: john.cudlipp@saferoad.co.uk

| | |
|-----------------|-------|
| DRAWING NUMBER: | REVn: |
| H1W3-GA-40 | 06 |