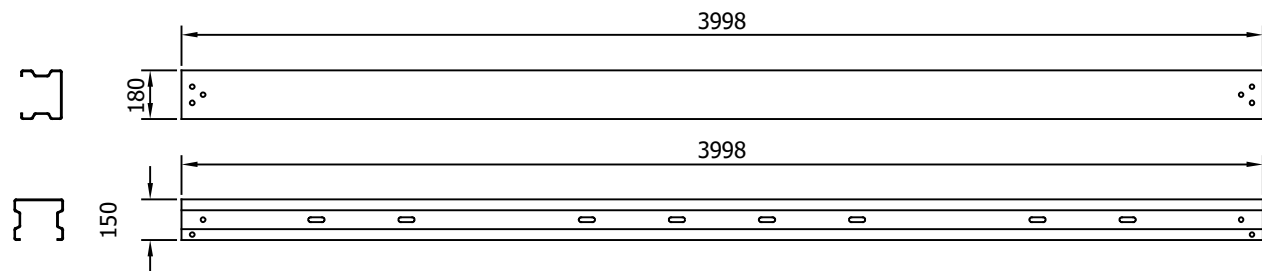
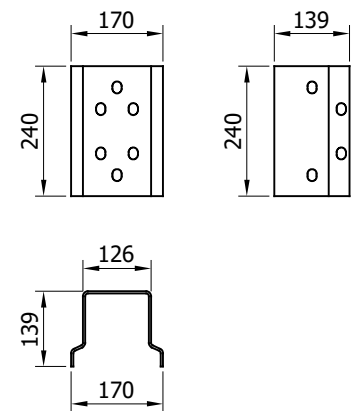


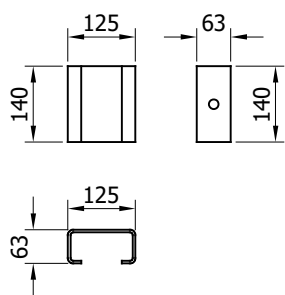
SR028 - sk "A" PROFILE BEAM



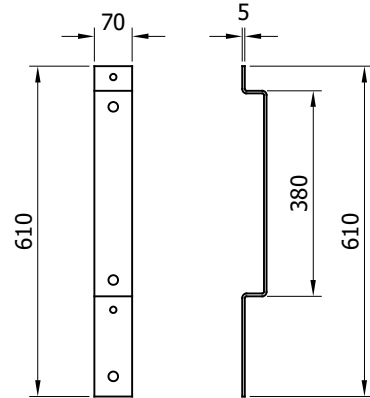
SR026 - TOP RAIL BEAM



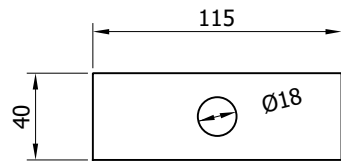
SR122 - TOP RAIL JOINT



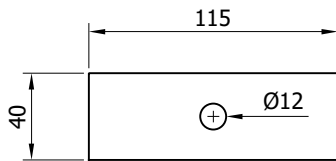
SR114 - TOP RAIL BEAM STIFFENER



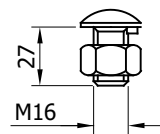
SR113 - POST SPACER BRACKET



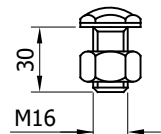
SR151 - WASHER PLATE
115 x 40 x 6 DIA.18



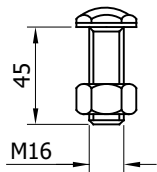
SR152 - WASHER PLATE
115 x 40 x 5 DIA.12



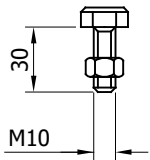
SR200 - SETSCREW
4.6 LIP M16x27 c/w NUT



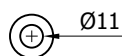
SR202 - SETSCREW
8.8 M16x30 c/w NUT



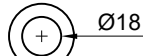
SR201 - SETSCREW
8.8 M16x45 c/w NUT



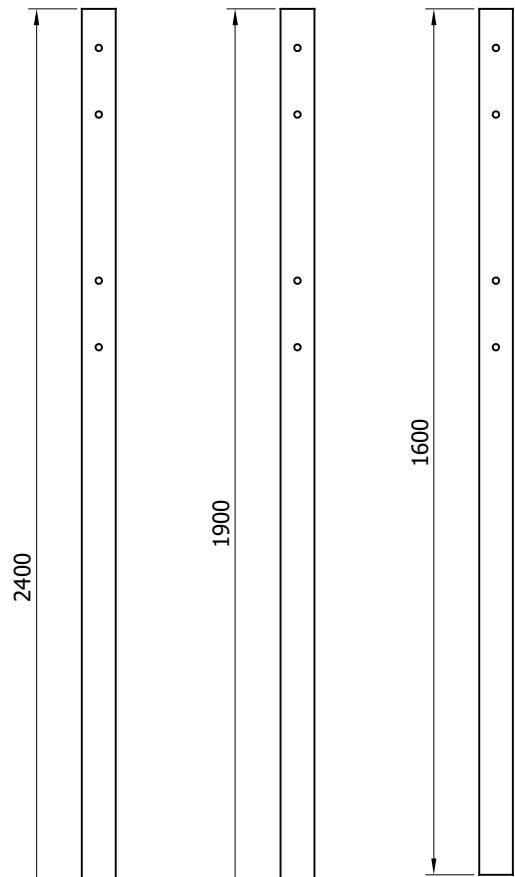
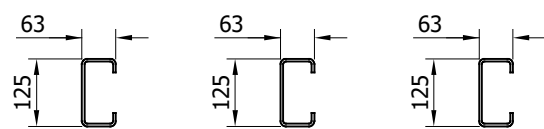
SR206 - SETSCREW
4.6 M10x30 c/w NUT



SR301 - M10
WASHER 11Ø HOLE



SR300 - M16
WASHER 18Ø HOLE

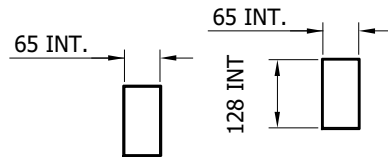


SR055 - TYPE 'B' POST
"C" 125 2400mm x 5

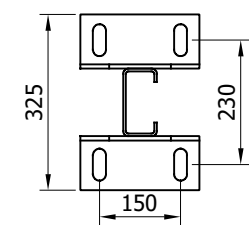
SR056 - TYPE 'B' POST
"C" 125 1600mm x 5



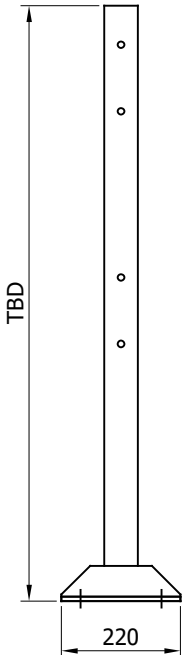
SR100 - A21
REINFORCING
RING



SR081 - C-125
POST SOCKET
x 520

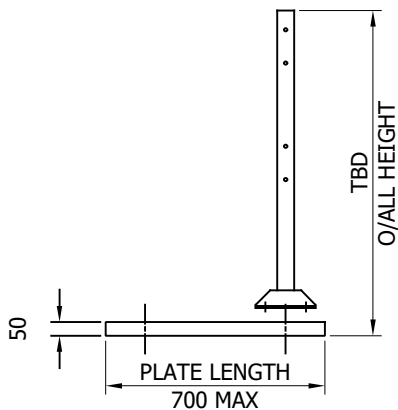


SR083 - C-125
POST SOCKET
x 570



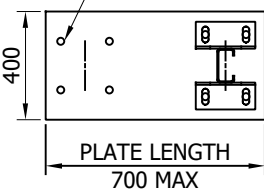
SR054 - TYPE 'B' POST
"C" 125
1900mm x 5

SURFACE MOUNTED -
TYPE 'B' C-125 POST



DRILL & FIX OR PUSHED
IN ANCHOR CRADLE
180x180xM20

OFFSET POST
(APPROACH SHOWN)



BASEPLATE DRILL
& TAPPED FOR
LIFTING EYE

REVn	DATE	DETAILS	INITIAL
10	10.01.23	TOP RAIL JOINT CODE CHANGED	A.D
09	29.07.22	CERTAIN SOCKETS REMOVED	A.D
08	13.05.22	SURFACE MOUNTED POSTS BASE CHANGED	A.D
07	16.08.21	SR114 TITLE REVISED	A.D
06	27.05.21	DETAILS REVISED	M.T
05	12.02.19	DETAILS REVISED	M.T
04	10.01.19	TITLE DETAILS REVISED	M.T
03	28.03.17	DETAILS REVISED	M.T
02	01.02.17	DETAILS REVISED	M.T
1.0	06.05.16	DRAWING CREATED	M.T

MegaRail sk H2 A W2 VI2

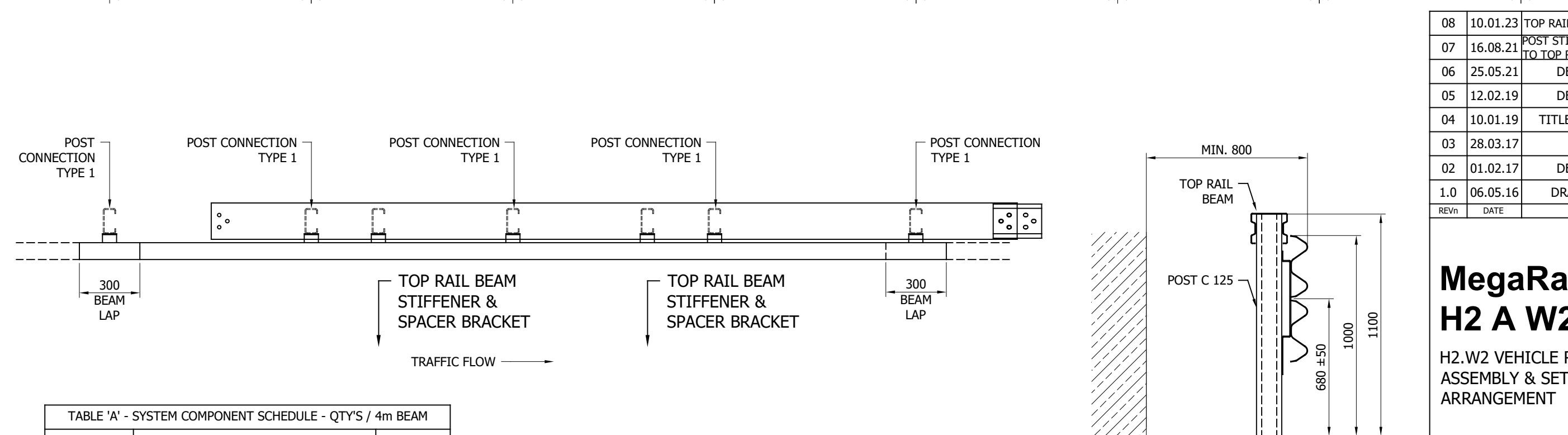
H2.W2 VEHICLE RESTRAINT SYSTEM
COMPONENTS SCHEMATIC

SAFEROAD®

CONCORD HOUSE,
BESSEMER WAY, SCUNTHORPE,
NORTH LINCOLNSHIRE, DN15 8XE
t: 01724 289119
FOR TECHNICAL ASSISTANCE CONTACT
john.cudlipp@saferoad.co.uk

DRAWING NUMBER:
H2W2-GA-00

REVn:
10



08	10.01.23	TOP RAIL JOINT CODE CHANGED	A.D
07	16.08.21	POST STIFFENER NOTE CHANGED TO TOP RAIL BEAM STIFFENER	A.D
06	25.05.21	DETAILS REVISED	M.T
05	12.02.19	DETAILS REVISED	M.T
04	10.01.19	TITLE DETAILS REVISED	M.T
03	28.03.17	VI ADDED	M.T
02	01.02.17	DETAILS REVISED	M.T
1.0	06.05.16	DRAWING CREATED	M.T
REVn	DATE	DETAILS	INITIAL

TABLE 'A' - SYSTEM COMPONENT SCHEDULE - QTY'S / 4m BEAM		
SAFEROAD PART NUMBER	DESCRIPTION	QUANTITY
SR028	sk BEAM "A" PROFILE	2
SR026	TOP RAIL BEAM	1
SEE TABLE 'B'	POST "C" 125	4
SR113	POST SPACER BRACKET	6
SR114	TOP RAIL BEAM STIFFENER	2
SR122	TOP RAIL JOINT	1
FOR SCHEDULE OF BOLTED CONNECTIONS REFER TO DRAWING NUMBER H2W2-GA-02		

SAFEROAD PART NUMBER	POST LENGTH
SR056	1600
SR054	1900
SR055	2400

GENERAL NOTES:

1. POSTS ARE TO BE INSTALLED WITH THE CLOSED FACE OF THE CHANNEL TOWARDS THE ON-COMING TRAFFIC.
2. FOR OPTIONS ON POST FOUNDATIONS REFER TO DRAWING NUMBER MR-GA-020
3. WHEN TYING INTO ADJACENT VRS ONLY ONE WORKING WIDTH DIFFERENCE IS PERMITTED.
4. WHERE KERB IS PRESENT THE MAXIMUM KERB HEIGHT IS 100mm. SHOULD THE KERB BE HIGHER THAN 100mm & THE FENCE IS SETBACK LESS THAN 250mm FROM FACE OF KERB, THE SYSTEM HEIGHT IS MEASURED FROM THE CARRIAGEWAY. IF THE SETBACK IS MORE THAN 250mm FROM THE FACE OF KERB THE SYSTEM HEIGHT IS MEASURED FROM THE TOP OF THE KERB. SEE MR-GA-002.
5. FOR MINIMUM LENGTH OF FULL HEIGHT VRS REFER TO CD377 & LENGTH OF NEED DRAWING MR-GA-043.

MegaRail sk H2 A W2 VI2

H2.W2 VEHICLE RESTRAINT SYSTEM ASSEMBLY & SETTING OUT ARRANGEMENT

SAFEROAD®

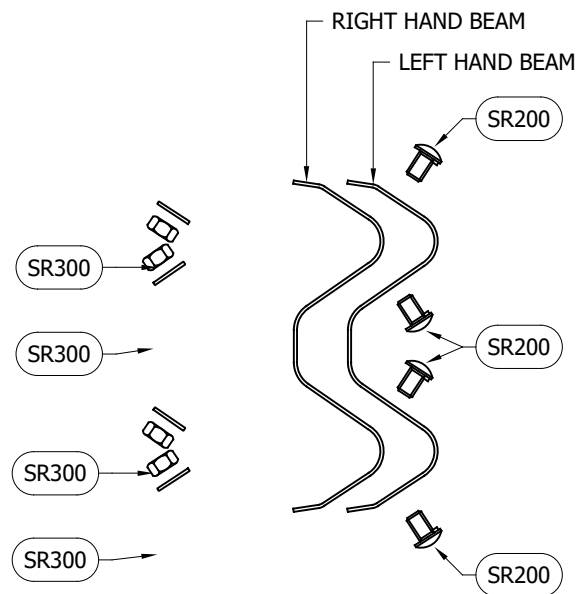
CONCORD HOUSE,
BESSEMER WAY, SCUNTHORPE,
NORTH LINCOLNSHIRE, DN15 8XE
t: 01724 289119
FOR TECHNICAL ASSISTANCE CONTACT
john.cudlipp@saferoad.co.uk

DRAWING NUMBER:

H2W2-GA-01

REVn:

08



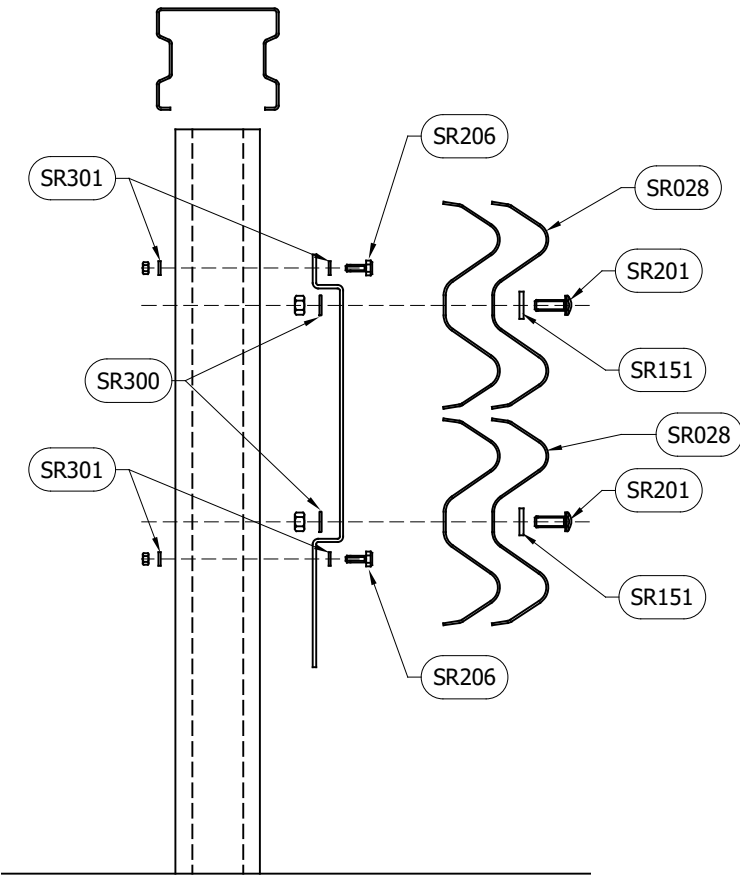
BEAM TO BEAM CONNECTION
ARRANGEMENT
(x2 LOCATIONS / BEAM END)

BOLTING COMPONENT SCHEDULE - QTY'S / BEAM (x2)		
SAFEROAD PART NUMBER	DESCRIPTION	BEAM TO BEAM CONNECTION
SR200	SETSCREW 4.6 LIP M16x27 c/w NUT	8 (+8)
SR300	WASHER M16 18∅ HOLE	8 (+8)

BOLTING COMPONENT SCHEDULE - QTY'S / POST SPACER TO POST		
SAFEROAD PART NUMBER	DESCRIPTION	POST TO SPACER CONNECTION
SR206	SETSCREW 4.6 M10 x 30 c/w NUT	2
SR301	M10 WASHER 11∅ HOLE	4

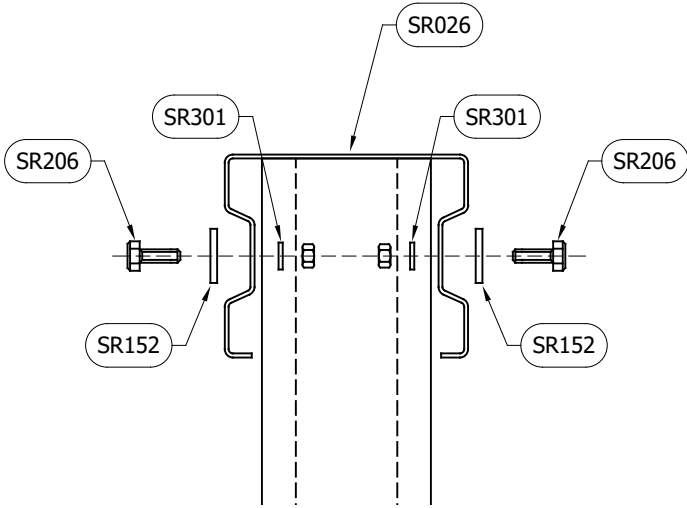
BOLTING COMPONENT SCHEDULE - QTY'S / BEAM TO TOP RAIL BEAM STIFFENER		
SAFEROAD PART NUMBER	DESCRIPTION	POST TO SPACER CONNECTION
SR201	SETSCREW 8.8 M16 x 45 c/w NUT	2
SR151	WASHER PLATE 115 x 40 x 6 DIA. 18	2
SR300	M16 WASHER 18∅ HOLE	2

BOLTING COMPONENT SCHEDULE - QTY'S / BEAM TO POST SPACER (x2)		
SAFEROAD PART NUMBER	DESCRIPTION	BEAM TO POST CONNECTION
SR201	SETSCREW 8.8 M16 x 45 c/w NUT	1
SR152	WASHER PLATE 115 x 40 x 6 DIA. 18	1
SR300	M16 WASHER 18∅ HOLE	1

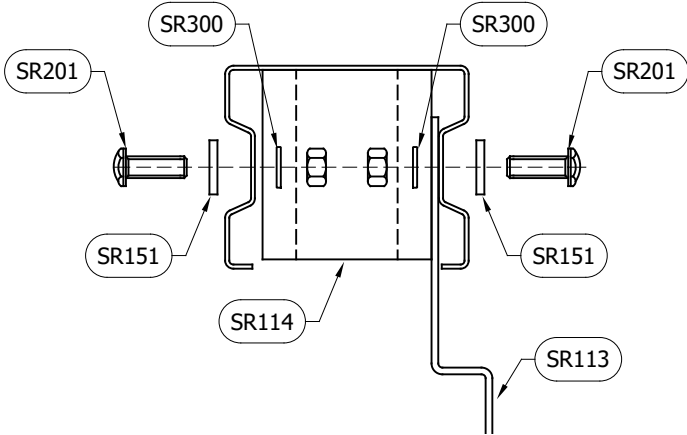


BEAM TO POST
CONNECTION TYPE 1

** BEAM REFERENCES i.e. LEFT / RIGHT HAND ARE FOR VERGE INSTALLATIONS; FOR CENTRAL RESERVATION INSTALLATIONS THE REFERENCES ARE REVERSED



TOP RAIL BEAM TO POST
CONNECTION

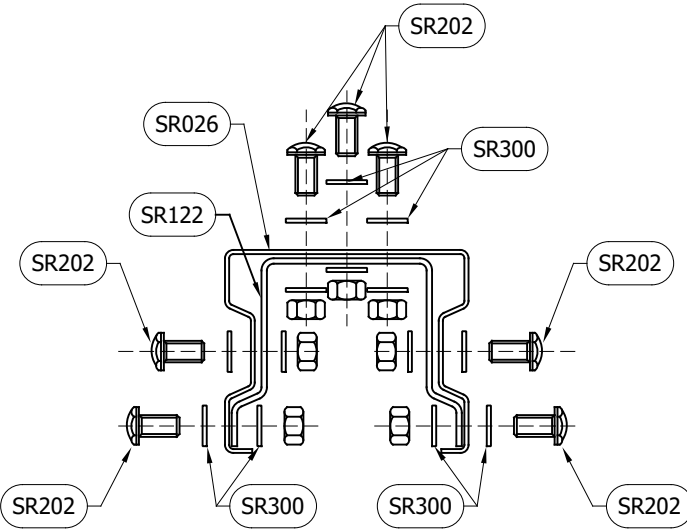


TOP RAIL BEAM STIFFENER
CONNECTION

BOLTING COMPONENT SCHEDULE - QTY'S / TOP RAIL BEAM TO POST		
SAFEROAD PART NUMBER	DESCRIPTION	TOP RAIL TO POST CONNECTION
SR206	SETSCREW 4.6 M10 x 30 c/w NUT	1
SR152	WASHER PLATE 115 x 40 x 5 DIA. 12	1
SR301	M10 WASHER 11∅ HOLE	1
QTY OF CONNECTION TYPES / 4m TOP RAIL BEAM		4

BOLTING COMPONENT SCHEDULE - QTY'S / TOP RAIL BEAM JOINT		
SAFEROAD PART NUMBER	DESCRIPTION	RAIL JOINT CONNECTION
SR202	SETSCREW 8.8 M16 x 30 c/w NUT	14
SR300	M16 WASHER 18∅ HOLE	28

- GENERAL NOTES:
- NUMBERS IN THE SCHEDULES SUFFIXED (+) DENOTES THE ADDITIONAL QUANTITY OF COMPONENTS REQUIRED FOR EXTREME ENDS OF INDIVIDUAL RUNS OF BARRIER.



TOP RAIL JOINT
CONNECTION

07	10.01.23	TOP RAIL JOINT CODE CHANGED	A.D
06	08.10.21	COMPONENT SCHEDULE TITLE CHANGED	A.D
05	16.08.21	TOP RAIL BEAM STIFFENER CONNECTION TITLE ADDED	A.D
04	09.01.19	DETAILS REVISED	M.T
03	28.03.17	VI ADDED	M.T
02	01.02.17	DETAILS REVISED	M.T
1.0	06.05.16	DRAWING CREATED	M.T
REVn	DATE	DETAILS	INITIAL

MegaRail sk H2 A W2 VI2

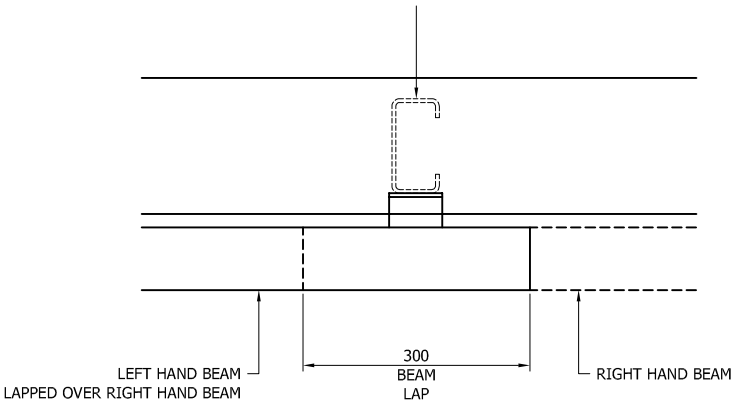
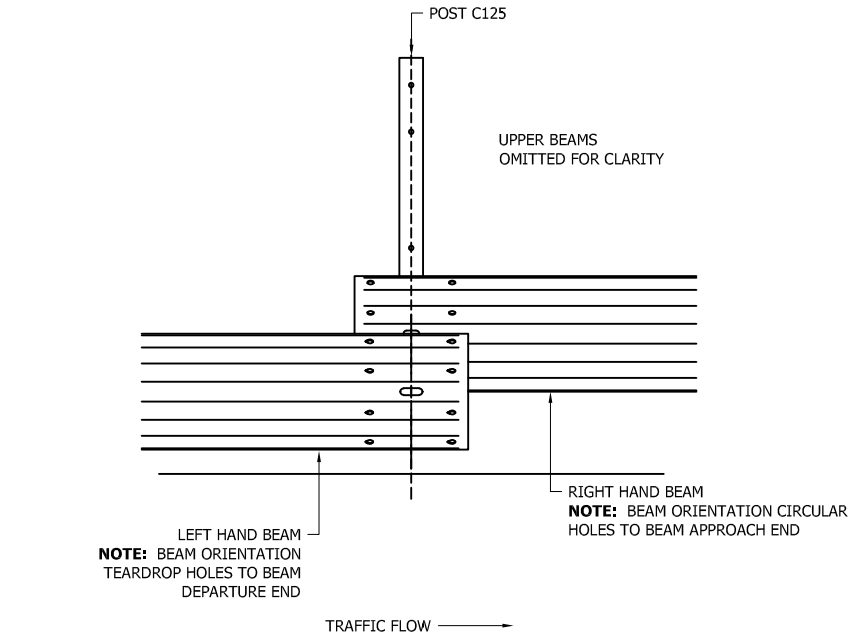
H2.W2 VEHICLE RESTRAINT SYSTEM
BOLTING ARRANGEMENTS

SAFEROAD®

CONCORD HOUSE,
BESSEMER WAY, SCUNTHORPE,
NORTH LINCOLNSHIRE, DN15 8XE
t: 01724 289119
FOR TECHNICAL ASSISTANCE CONTACT
john.cudlipp@saferoad.co.uk

DRAWING NUMBER:	REVn:
H2W2-GA-02	07

- GENERAL NOTES:
1. POSTS ARE TO BE INSTALLED WITH THE CLOSED FACE OF THE CHANNEL TOWARDS THE ON-COMING TRAFFIC.



** BEAM REFERENCES i.e. LEFT / RIGHT HAND ARE FOR VERGE INSTALLATIONS; FOR CENTRAL RESERVATION INSTALLATIONS THE REFERENCES ARE REVERSED

04	10.01.19	TITLE DETAILS REVISED	M.T
03	28.03.17	VI ADDED	M.T
02	01.02.17	DETAILS REVISED	M.T
1.0	06.05.16	DRAWING CREATED	M.T
REVn	DATE	DETAILS	INITIAL

MegaRail sk
H2 A W2 VI2

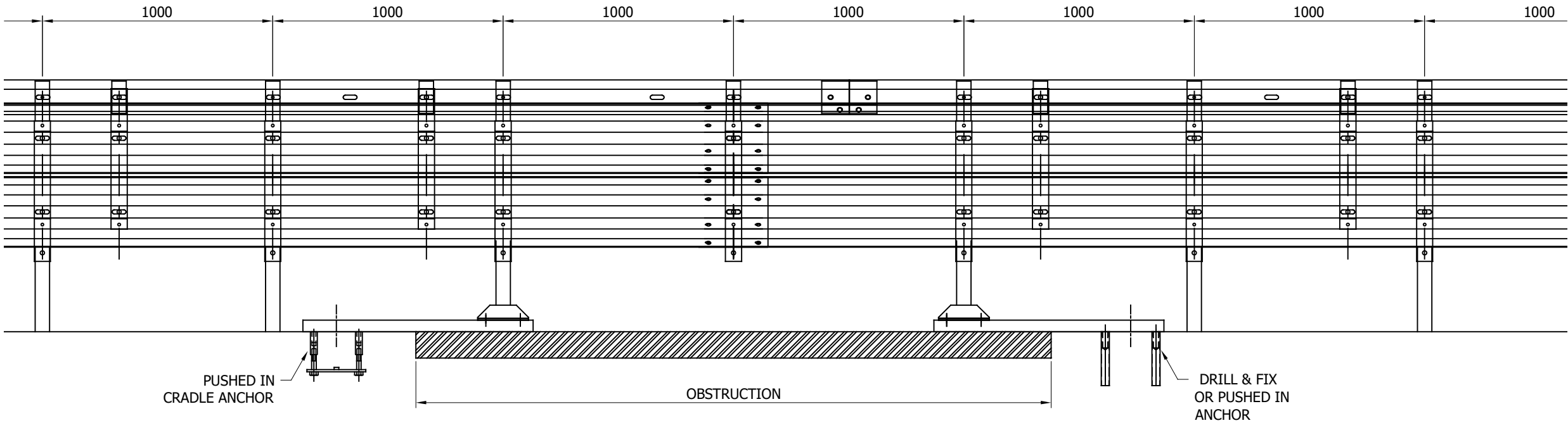
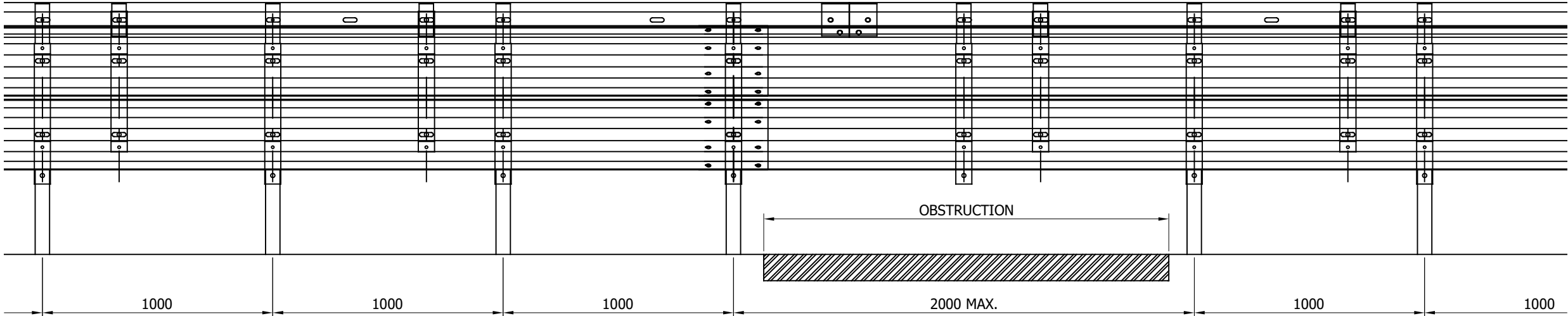
H2.W2 VEHICLE RESTRAINT SYSTEM
BEAM LAPPING DETAIL FOR H2 A W2
MEGARAIL SYSTEM

SAFEROAD®

CONCORD HOUSE,
BESSEMER WAY, SCUNTHORPE,
NORTH LINCOLNSHIRE, DN15 8XE
t: 01724 289119

FOR TECHNICAL ASSISTANCE CONTACT
john.cudlipp@saferoad.co.uk

DRAWING NUMBER:	REVn:
H2W2-GA-03	04



- GENERAL NOTES:
1. IF THE SITE CONDITIONS DO NOT ALLOW A POST TO BE INSTALLED ON THE SYSTEM PITCH DEVIATIONS CAN BE APPLIED. THE OBSTRUCTED POST CAN BE LEFT OUT AND EXTRA POSTS INSTALLED TO SPAN THE OBSTRUCTION. THE NEW POST SPACING MUST NOT EXCEED 2000mm AND MUST NOT BE LESS THAN 500mm. ALTHOUGH IT WOULD BE BENEFICIAL TO USE THE HOLES ALREADY IN THE BEAM IT IS ACCEPTABLE TO DRILL NEW HOLES IN THE DESIRED POSITIONS AND TREAT WITH ZINC RICH PAINT.
 2. OFFSET POSTS SHOWN ON DRAWING H2W2-GA-00 CAN BE USED.

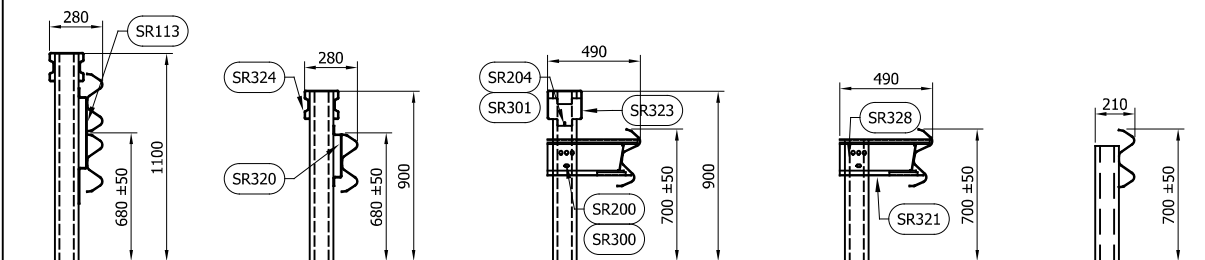
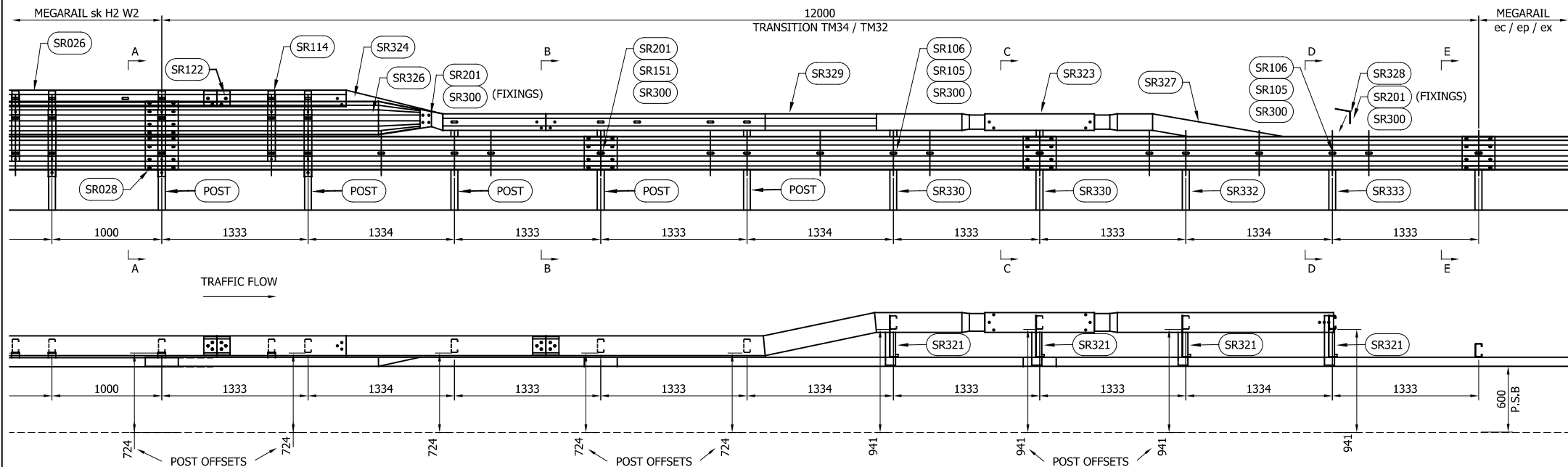
05	13.05.22	SURFACE MOUNTED POST BASE CHANGED	A.D
04	23.07.21	SURFACE MOUNTED POST DETAIL ADDED	A.D
03	10.01.19	TITLE DETAILS REVISED	M.T
02	28.03.17	VI ADDED	M.T
01	10.03.17	NOTE No. 1 REVISED	M.T
00	03.02.17	DRAWING CREATED	L.L
REVn	DATE	DETAILS	INITIAL

MegaRail sk H2 A W2 VI2

H2.W2 VEHICLE RESTRAINT SYSTEM
DEVIATION SETTING OUT
ARRANGEMENT

SAFEROAD®
CONCORD HOUSE,
BESSEMER WAY, SCUNTHORPE,
NORTH LINCOLNSHIRE, DN15 8XE
t: 01724 289119
FOR TECHNICAL ASSISTANCE CONTACT
john.cudlipp@saferoad.co.uk

DRAWING NUMBER:	REVn:
H2W2-GA-40	05



SECTION A-A

SECTION B-B

SECTION C-C

SECTION D-D

SECTION E-E

GENERAL NOTES:

1. TO BE READ IN CONJUNCTION WITH DRG. Nos. H2W2-GA-00, H2W2-GA-01 & H2W2-GA-02.
2. DEPARTURE TRANSITION SHOWN, APPROACH SIMILAR BUT HANDED. CODES AS SHOWN.

POST LENGTHS DETAILED WITHIN GA & TABLE ARE EXAMPLES OF LENGTHS AVAILABLE. LENGTH/FOUNDATION VARIATIONS ARE AVAILABLE AS SHOWN ON GA-00, AS REQUIRED VIA SOIL TESTING PROCEDURE

TABLE 'A' - TRANSITION COMPONENT SCHEDULE - QTY'S 1 No. DEPARTURE TRANSITION

SAFEROAD PART NUMBER	DESCRIPTION	QUANTITY
SR113	POST SPACER BRACKET	1
SR122	BOX PROFILE JOINT	1
SR323	BOX PROFILE FITTING PIECE	1
SR320	SPACER BRACKET 45mm	3
SR324	KP-LOWERING MEMBER 13°	1
SR327	KP-LOWERING MEMBER	1
SR325	KP m LATERAL OFFSET APPROACH	0
SR329	KP m LATERAL OFFSET DEPARTURE	1
SR326	CORRUGATE CONNECTION FITTING	1
SR321	SPACER 480mm L/H OR R/H	4
SR028	sk BEAM "A" PROFILE	2
SR328	ATTACHMENT ANGLE 100°	1
SK POST	'C' POST 125 (SEE GA-00 FOR LENGTH OPTIONS)	5
SR330	'C' POST 125 x 2400 LONG	2
SR332	'C' POST 125 x 2000 LONG	1
SR333	'C' POST 125 x 1800 LONG	1

FOR SCHEDULE OF BOLTED CONNECTIONS REFER TO DRAWING NUMBER H2W2-GA-02

06	11/03/24	NOTE REGARDING POST LENGTHS ADDED	H.B
05	03.08.23	DETAILS UPDATED	H.B
04	10.01.23	TOP RAIL JOINT CODE CHANGED	A.D
03	25.03.19	P.S.B REVISED	M.T
02	18.03.19	COMPONENTS ADDED	M.T
01	10.01.19	TITLE DETAILS REVISED	M.T
REVn	DATE	DETAILS	INITIAL

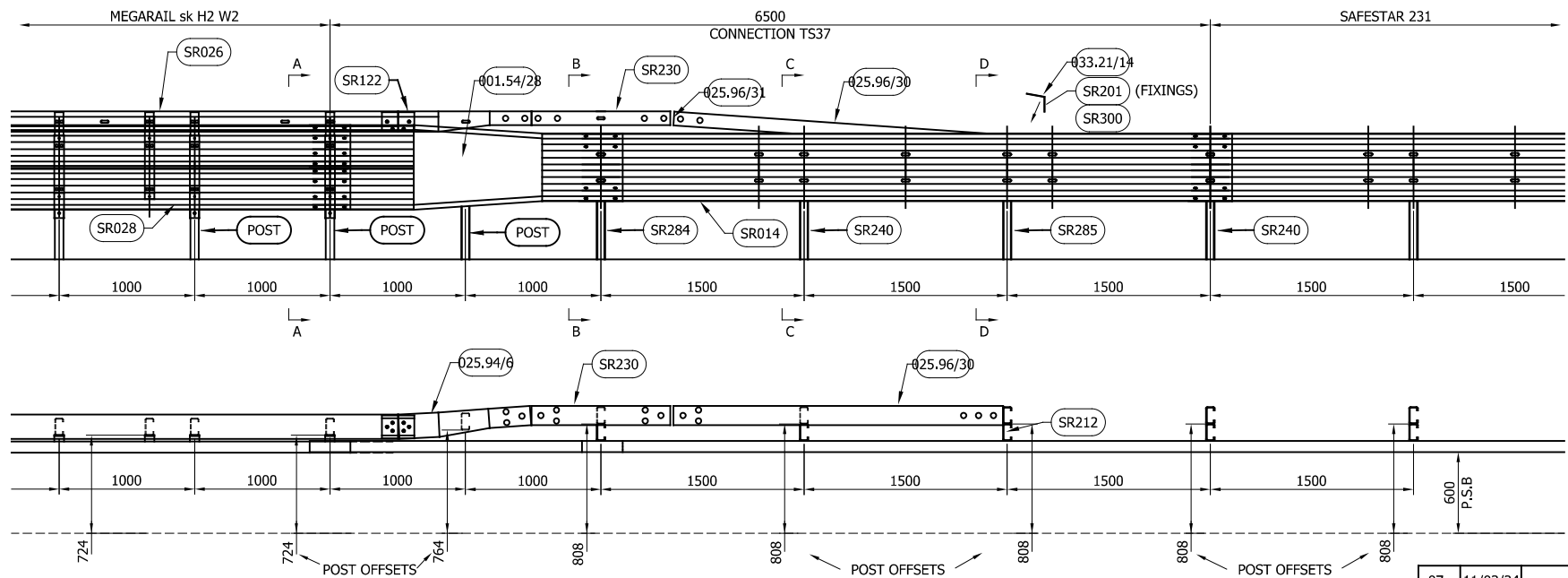
MegaRail sk H2 A W2 VI2

H2.W2 VEHICLE RESTRAINT SYSTEM
TM34 / TM32 TRANSITION
ARRANGEMENT - VERGE DEPARTURE

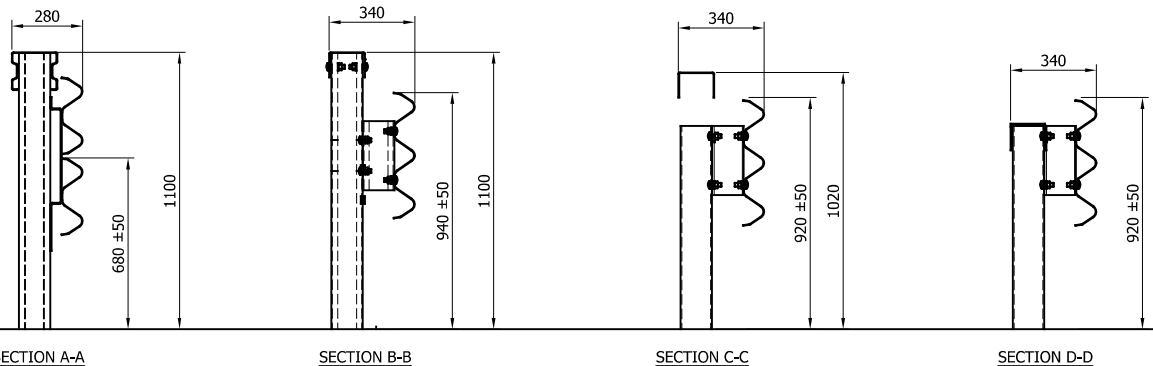
SAFEROAD®

CONCORD HOUSE,
BESSEMER WAY, SCUNTHORPE,
NORTH LINCOLNSHIRE, DN15 8XE
t: 01724 289119
FOR TECHNICAL ASSISTANCE CONTACT
john.cudlipp@saferoad.co.uk

DRAWING NUMBER: H2W2-GA-51 REVn: 06



POST LENGTHS DETAILED WITHIN GA & TABLE ARE
EXAMPLES OF LENGTHS AVAILABLE. LENGTH/FOUNDATION
VARIATIONS ARE AVAILABLE AS SHOWN ON GA-00, AS
REQUIRED VIA SOIL TESTING PROCEDURE



GENERAL NOTES:

1. TO BE READ IN CONJUNCTION WITH DRG.
Nos. H2W2-GA-00, H2W2-GA-01 &
H2W2-GA-02.
2. DEPARTURE CONNECTION SHOWN, APPROACH
SIMILAR BUT HANDED. CODES AS SHOWN.

TABLE 'A' - TRANSITION COMPONENT SCHEDULE - QTY'S 1 No. DEPARTURE TRANSITION		
SAFEROAD PART NUMBER	DESCRIPTION	QUANTITY
001.54/27	sk TO TRI-WAVE BEAM APPROACH	0
001.54/28	sk TO TRI-WAVE BEAM DEPARTURE	1
025.94/6	sk TO SAFESTAR TRANSITION TOP RAIL	1
SR230	SAFESTAR TOP RAIL 1100	1
025.96/30	LOWERING END TOP RAIL	1
SR212	SAFESTAR SPACER 275	4
SR028	sk BEAM "A" PROFILE	2
SR014	TRI-WAVE BEAM	1
033.21/14	ATTACHMENT ANGLE	1
SK POST	'C' POST 125 (SEE GA-00 FOR LENGTH OPTIONS)	3
SR284	'C' POST 125 x 1600 LONG cw CONN.	1
SR240	'C' POST 125 x 1250 LONG SAFESTAR	2
SR285	'C' POST 125 x 1250 LONG SAFESTAR w CONN.	1
FOR SCHEDULE OF BOLTED CONNECTIONS REFER TO DRAWING NUMBER H2W2-GA-02 & SAFESTAR DRG H2W3-GA-02		

07	11/03/24	NOTE REGARDING POST LENGTHS ADDED	H.B
06	03.08.23	DETAILS UPDATED	H.B
05	10.01.23	TOP RAIL JOINT CODE CHANGED	A.D
04	08.12.21	ARROWS ADDED TO ELEVATION	A.D
03	25.05.21	DETAILS REVISED	M.T
02	01.04.19	P.S.B REVISED	M.T
01	10.01.19	TITLE DETAILS REVISED	M.T
00	26.10.18	DRAWING CREATED	M.T
REVn	DATE	DETAILS	INITIAL

MegaRail sk H2 A W2 VI2

H2.W2 VEHICLE RESTRAINT SYSTEM
CONNECTION TO H2/W3 SAFESTAR
231 ARRANGEMENT

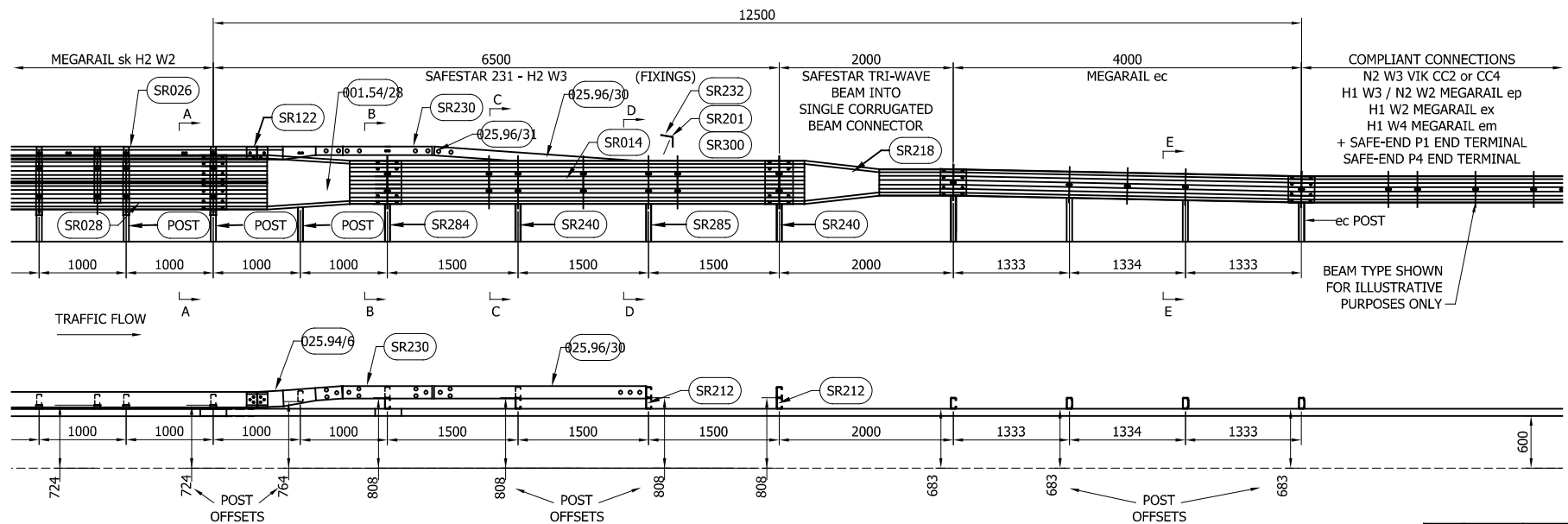
SAFEROAD®

CONCORD HOUSE,
BESSEMER WAY, SCUNTHORPE,
NORTH LINCOLNSHIRE, DN15 8XE
t: 01724 289119
FOR TECHNICAL ASSISTANCE CONTACT
john.cudlipp@saferoad.co.uk

DRAWING NUMBER:	REVn:
-----------------	-------

H2W2-GA-52

07



POST LENGTHS DETAILED WITHIN GA & TABLE ARE EXAMPLES OF LENGTHS AVAILABLE. LENGTH/FOUNDATION VARIATIONS ARE AVAILABLE AS SHOWN ON GA-00, AS REQUIRED VIA SOIL TESTING PROCEDURE

TABLE 'A' - COMPONENT SCHEDULE - QTY'S 1 No. DEPARTURE		
SAFEROAD PART NUMBER	DESCRIPTION	QUANTITY
001.54/27	sk TO TRI-WAVE BEAM APPROACH	0
001.54/28	sk TO TRI-WAVE BEAM DEPARTURE	1
025.94/6	sk TO SAFESTAR TRANSITION TOP RAIL	1
SR230	SAFESTAR TOP RAIL 1100	1
025.96/30	LOWERING END TOP RAIL	1
025.96/31	TOP RAIL JOINT ANGLED	
SR212	SAFESTAR SPACER 275	4
SR028	sk BEAM "A" PROFILE	2
SR014	TRI-WAVE BEAM	1
SR232	ATTACHMENT ANGLE	1
SK POST	'C' POST 125 (SEE GA-00 FOR LENGTH OPTIONS)	3
SR284	'C' POST 125 x 1600 LONG cw CONN.	1
SR240	'C' POST 125 x 1250 LONG SAFESTAR	2
SR285	'C' POST 125 x 1250 LONG SAFESTAR w CONN.	1
FOR SCHEDULE OF BOLTED CONNECTIONS REFER TO DRAWING NUMBER H2W2-GA-02 & SAFESTAR DRG H2W3-GA-02		

08	11/03/24	NOTE REGARDING POST LENGTHS ADDED	H.B
07	03.08.23	DETAILS UPDATED	H.B
06	10.01.23	TOP RAIL JOINT CODE CHANGED	A.D
05	19.10.21	DETAILS REVISED	A.D
04	08.10.21	DETAILS REVISED	A.D
03	23.09.21	SAFESTAR TRI-WAVE CONNECTION CODE CHANGED	A.D
02	25.05.21	DETAILS REVISED	M.T
01	29.03.19	DETAILS REVISED	M.T
00	28.03.19	DRAWING CREATED	M.T
REVn	DATE	DETAILS	INITIAL

MegaRail sk H2 A W2 VI2

H2.W2 VEHICLE RESTRAINT SYSTEM
SYSTEM PROGRESSION FROM H2 W2
MEGARAIL sk

SAFEROAD®

CONCORD HOUSE,
BESSEMER WAY, SCUNTHORPE,
NORTH LINCOLNSHIRE, DN15 8XE
t: 01724 289119
FOR TECHNICAL ASSISTANCE CONTACT
john.cudlipp@saferoad.co.uk

DRAWING NUMBER: H2W2-GA-53 REVn: 08

H2W2-GA-53

08

GENERAL NOTES:

- TO BE READ IN CONJUNCTION WITH DRG. Nos. H2W2-GA-00, H2W2-GA-01 & H2W2-GA-02.
- DEPARTURE CONNECTION SHOWN, APPROACH SIMILAR BUT HANDED. CODES AS SHOWN.

