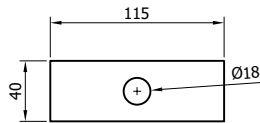
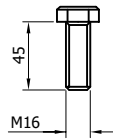


SR468 - 'A' PROFILE BEAM 3MM THICK

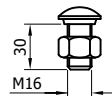
NOTE: THIS HOLE IDENTIFIES THE REQUIRED ORIENTATION OF THE BEAM AND THE BEAM END WITH THE ADDITIONAL HOLE SHOULD BE SITED AS THE REAR BEAM AT LAP JOINTS



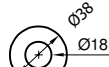
SR741 - WASHER PLATE
115 x 40 x 5 DIA. 18



SR740 - SETSCREW 8.8
M16x45



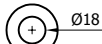
SR207 - M16x30 SETSCREW HRK SHOULDER
c/w NUT



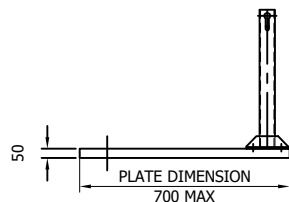
SR209 -
M16 WASHER 18Ø HOLE x 38



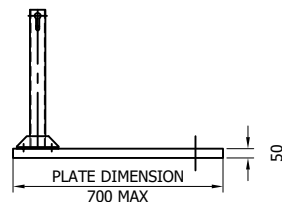
SR743 - M16 HEX NUT



SR742 - M16 WASHER

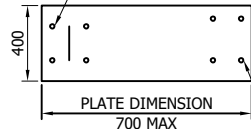


APPROACH
OFFSET POST

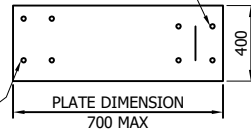


DEPARTURE
OFFSET POST

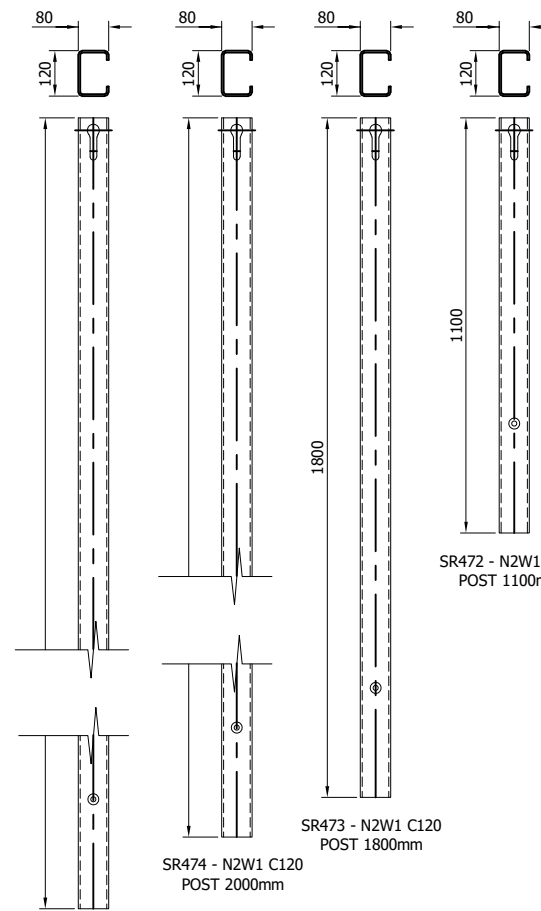
CAN BE FIXED WITH
CAST IN ANCHORS, DRILL
AND FIX ANCHORS OR
PUSHED IN ANCHORS
AT 180x180 CENTERS



4 No. M20
THREADED HOLES
BASEPLATE DRILL &
TAPPED FOR LIFTING EYE



SR100 - A21
REINFORCING
RING

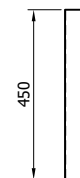


SR472 - N2W1 C120
POST 1100mm

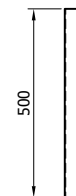
SR473 - N2W1 C120
POST 1800mm

SR474 - N2W1 C120
POST 2000mm

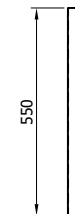
SR475 - N2W1 C120
POST 2400mm



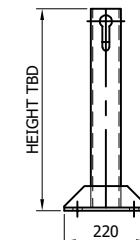
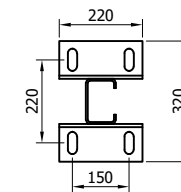
SR490 - N2W1
C120 POST
SOCKET x 450



SR491 - N2W1
C120 POST
SOCKET x 500

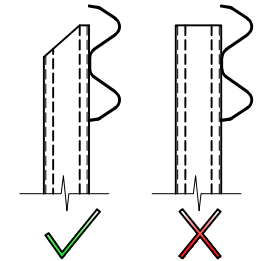


SR492 - N2W1
C120 POST
SOCKET x 550



SR471 - SURFACE
MOUNTED N2W1 C120
POST

SYSTEM POST
IDENTIFICATION



| | | | |
|------|----------|---------------------------|---------|
| 09 | 18/12/25 | MINOR DETAIL CHANGE | H.B |
| 08 | 21/11/24 | M16x45 CODE UPDATED | H.B |
| 07 | 21/12/23 | PART NUMBERS UPDATED | H.B |
| 06 | 19/12/23 | DETAILS UPDATED | H.B |
| 05 | 17/07/23 | LAP BOLT CHANGE | H.B |
| 04 | 14/07/23 | LAP BOLT DETAILS REVISED | H.B |
| 03 | 19/06/23 | SOCKET SIZES UPDATED | H.B |
| 02 | 09/06/23 | SMP DETAIL UPDATED | H.B |
| 01 | 19/05/23 | COMPONENT DETAILS UPDATED | H.B |
| 00 | 30/08/22 | DRAWING CREATED | H.B |
| REVn | DATE | DETAILS | INITIAL |

MEGARAIL EP-C120 N2/W1

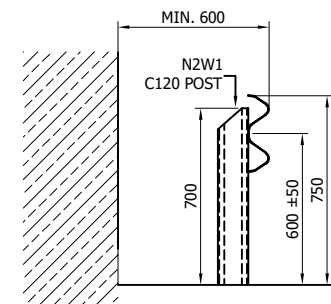
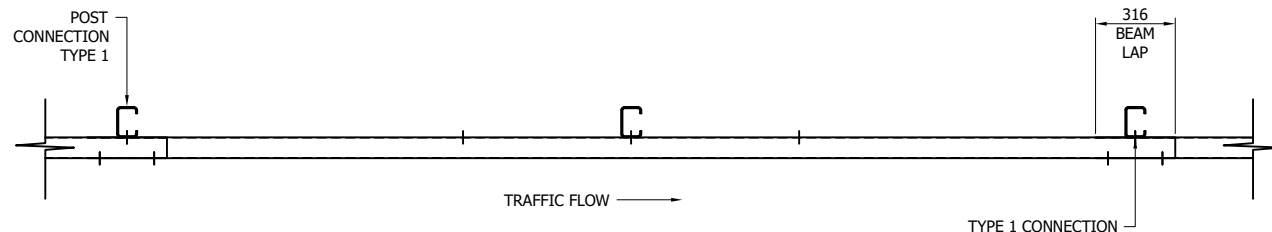
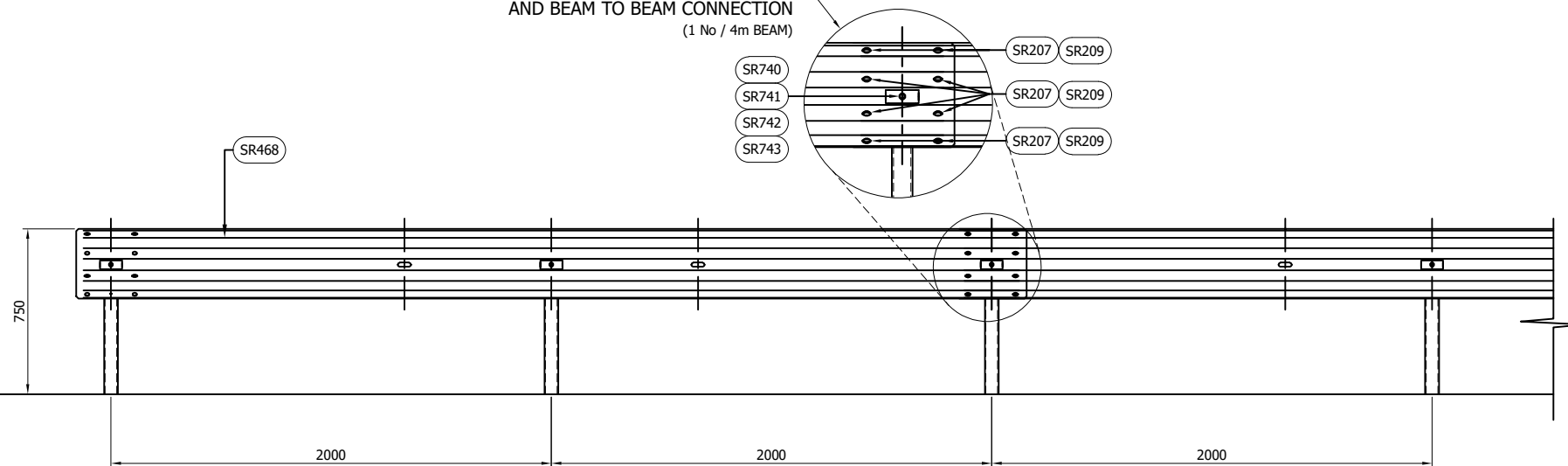
COMPONENTS SCHEMATIC



CONCORD HOUSE,
BESSEMER WAY, SCUNTHORPE,
NORTH LINCOLNSHIRE, DN15 8XE
t: 01724 289119
FOR TECHNICAL ASSISTANCE CONTACT
john.cudlipp@saferoad.co.uk

DRAWING NUMBER: MR-C120N2W1-GA-00 REVn: 09

BEAM TO POST CONNECTION TYPE 1
AND BEAM TO BEAM CONNECTION
(1 No / 4m BEAM)



GENERAL NOTES:

1. POSTS ARE TO BE INSTALLED WITH THE CLOSED FACE OF THE CHANNEL TOWARDS THE ON-COMING TRAFFIC.
2. FOR OPTIONS ON POST FOUNDATIONS REFER TO DRAWING NUMBER MR-GA-020
3. FOR DEVIATIONS IN SYSTEM POST PITCH REFER TO DRAWING MR-C120N2W1-GA-40
4. WHEN TYING INTO ADJACENT VRS ONLY ONE WORKING WIDTH DIFFERENCE IS PERMITTED.
5. SEE MR-GA-001 & MR-GA-003 FOR DETAILS OF SYSTEM HEIGHTS WITH REFERENCE TO SETBACK & KERB HEIGHT.
6. FOR MINIMUM LENGTH OF FULL HEIGHT VRS REFER TO SAFEROAD MEGARAIL MANUAL.
7. EXPANSION BEAMS TO BE USED WHEN THE SYSTEM PASSES OVER A MOVEMENT JOINT

POSTS SHOWN IN BELOW TABLE
ARE FOR VERGE INSTALLATIONS ONLY.
CENTRAL RESERVE POST VARIANTS
TO BE USED WHEN REQUIRED

| SYSTEM COMPONENT SCHEDULE - QUANTITIES / 4m BEAM | | |
|--|------------------------------|----------|
| SAFEROAD UK PART NUMBER | DESCRIPTION | QUANTITY |
| SR468 | 'A' PROFILE BEAM x 3mm THICK | 1 |
| SEE TABLES | N2W1 C120 POST x 5mm THICK | 2 |
| FOR SCHEDULE OF BOLTED CONNECTIONS REFER TO DRAWING NUMBER MR-C120N2W1-GA-02 | | |

| SCHEDULE OF VERGE POSTS REFERENCE NUMBERS AND LENGTHS | |
|---|-----------------|
| SAFEROAD UK PART NUMBER | POST LENGTH |
| SR475 | 2400 |
| SR474 | 2000 |
| SR473 | 1800 |
| SR472 | 1100 |
| SR471 | SURFACE MOUNTED |

| SCHEDULE OF CENTRAL RESERVE POSTS REFERENCE NUMBERS AND LENGTHS | |
|---|-----------------|
| SAFEROAD UK PART NUMBER | POST LENGTH |
| SR533 | 2400 |
| SR532 | 2000 |
| SR531 | 1800 |
| SR530 | 1100 |
| SR534 | SURFACE MOUNTED |

| | | | |
|------|----------|----------------------|---------|
| 04 | 21/11/24 | M16x45 CODE UPDATED | H.B |
| 03 | 21/12/23 | PART NUMBERS UPDATED | H.B |
| 02 | 17/07/23 | LAP BOLT CHANGE | H.B |
| 01 | 19/05/23 | NOTE REMOVED | H.B |
| 00 | 30/08/22 | DRAWING CREATED | H.B |
| REVn | DATE | DETAILS | INITIAL |

MEGARAIL EP-C120 N2/W1

SYSTEM ASSEMBLY AND SETTING
OUT ARRANGEMENT SCHEMATIC



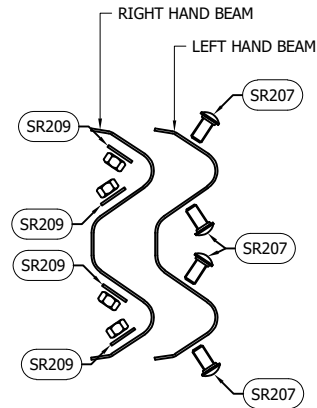
CONCORD HOUSE,
BESSEMER WAY, SCUNTHORPE,
NORTH LINCOLNSHIRE, DN15 8XE
t: 01724 289119
FOR TECHNICAL ASSISTANCE CONTACT
john.cudlipp@saferoad.co.uk

DRAWING NUMBER:

REVn:

MR-C120N2W1-GA-01 04

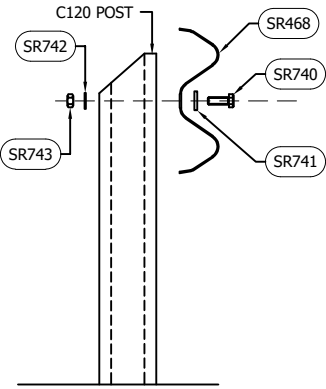
- GENERAL NOTES:
1. NUMBERS IN THE SCHEDULES SUFFIXED (+) DENOTES THE ADDITIONAL QUANTITY OF COMPONENTS REQUIRED FOR EXTREME ENDS OF INDIVIDUAL RUNS OF BARRIER.



BEAM TO BEAM LAP
CONNECTION ARRANGEMENT
(PER BEAM END)

** BEAM REFERENCES i.e. LEFT / RIGHT HAND ARE FOR VERGE INSTALLATIONS; FOR CENTRAL RESERVATION INSTALLATIONS THE REFERENCES ARE REVERSED

| BEAM TO BEAM LAP BOLTING SCHEDULE | | |
|-----------------------------------|---------------------------------|--------------|
| SAFEROAD UK PART NUMBER | DESCRIPTION | QTY'S P/BEAM |
| SR207 | SETSCREW 8.8 HRK M16x30 c/w NUT | 8 (+8) |
| SR209 | M16 WASHER 18Ø HOLE x 38 | 8 (+8) |



BEAM TO POST FIXING SCHEMATIC
(CONNECTION TYPE 1)

| TOTAL QUANTITIES PER POST | | |
|---------------------------|-----------------------------------|-------------------------|
| SAFEROAD PART NUMBER | DESCRIPTION | BEAM TO POST CONNECTION |
| SR740 | SETSCREW 8.8 M16 x 45 | 1 |
| SR741 | WASHER PLATE 115 x 40 x 5 DIA. 18 | 1 |
| SR742 | WASHER M16 18Ø HOLE | 1 |
| SR743 | M16 HEXAGON NUT | 1 |

| | | | |
|------|----------|----------------------|---------|
| 04 | 21/11/24 | M16x45 CODE UPDATED | H.B |
| 03 | 21/12/23 | PART NUMBERS UPDATED | H.B |
| 02 | 17/07/23 | LAP BOLT CHANGE | H.B |
| 01 | 19/05/23 | FLANGE NUTS ADDED | H.B |
| 00 | 30/08/22 | DRAWING CREATED | H.B |
| REVn | DATE | DETAILS | INITIAL |

MEGARAIL EP-C120 N2/W1

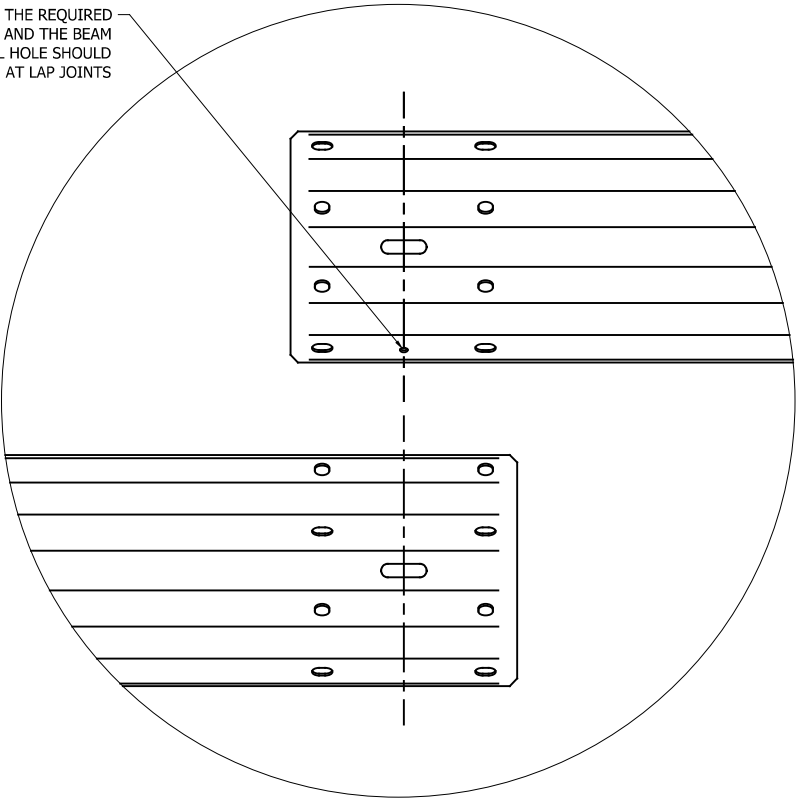
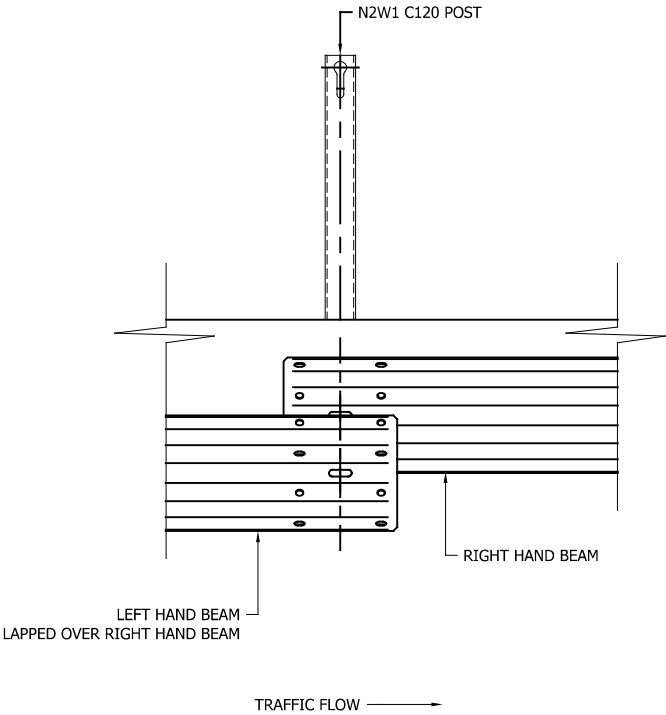
FIXING AND INSTALLATION
SCHEMATIC



CONCORD HOUSE,
BESSEMER WAY, SCUNTHORPE,
NORTH LINCOLNSHIRE, DN15 8XE
t: 01724 289119
FOR TECHNICAL ASSISTANCE CONTACT
john.cudlipp@saferoad.co.uk

| | |
|-------------------|-------|
| DRAWING NUMBER: | REVn: |
| MR-C120N2W1-GA-02 | 04 |

NOTE: THIS HOLE IDENTIFIES THE REQUIRED ORIENTATION OF THE BEAM AND THE BEAM END WITH THE ADDITIONAL HOLE SHOULD BE SITED AS THE REAR BEAM AT LAP JOINTS



GENERAL NOTES:

1. POSTS ARE TO BE INSTALLED WITH THE CLOSED FACE OF THE CHANNEL TOWARDS THE ON-COMING TRAFFIC.

| REVn | DATE | DETAILS | INITIAL |
|------|----------|-----------------|---------|
| 03 | 21/11/24 | DRAWING UPDATED | H.B |
| 02 | 21/12/23 | LOGO UPDATED | H.B |
| 01 | 19/05/23 | NOTE REMOVED | H.B |
| 00 | 30/08/22 | DRAWING CREATED | H.B |

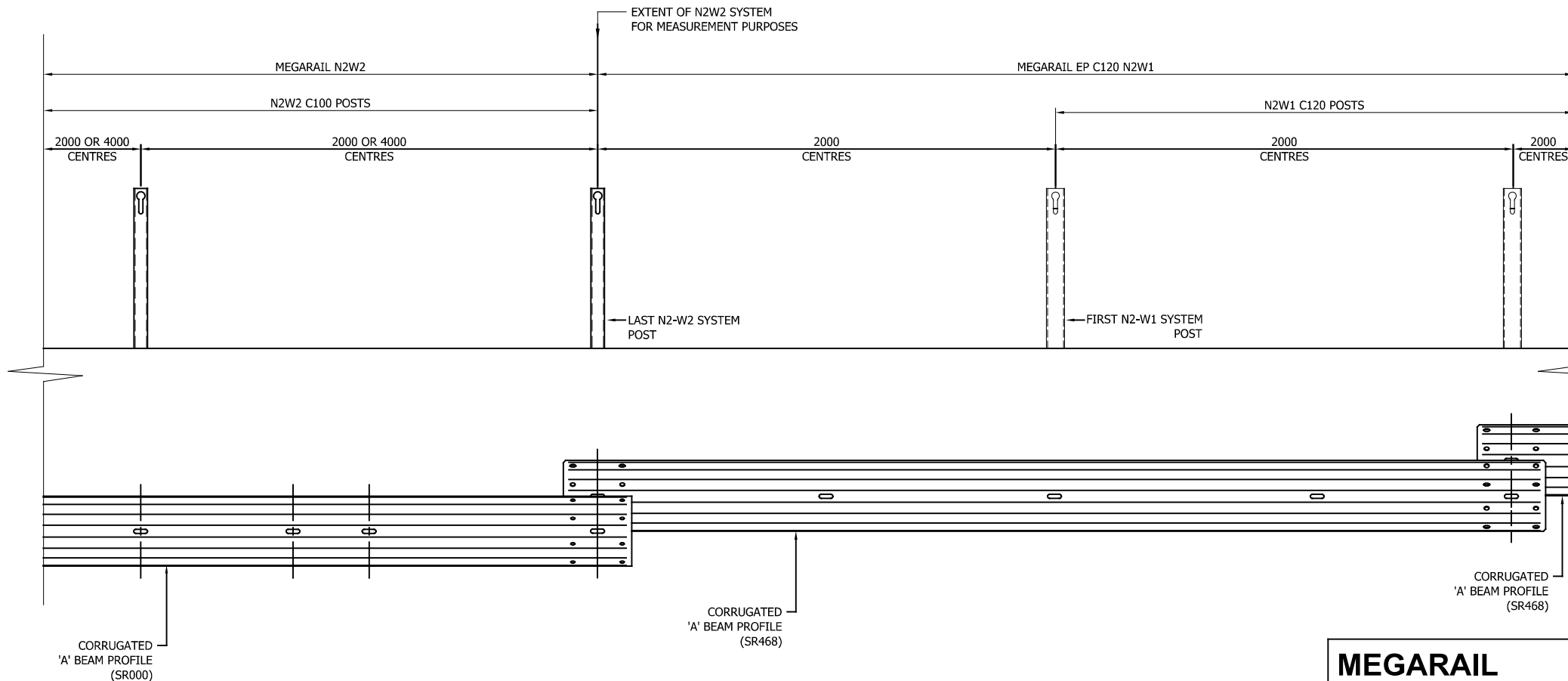
**MEGARAIL
EP-C120 N2/W1**

BEAM LAPPING DETAILS



CONCORD HOUSE,
BESSEMER WAY, SCUNTHORPE,
NORTH LINCOLNSHIRE, DN15 8XE
t: 01724 289119
FOR TECHNICAL ASSISTANCE CONTACT
john.cudlipp@saferoad.co.uk

| | |
|-------------------|-------|
| DRAWING NUMBER: | REVn: |
| MR-C120N2W1-GA-03 | 03 |



MEGARAIL EP-C120 N2/W1

SYSTEM PROGRESSION DETAILS



CONCORD HOUSE,
BESSEMER WAY, SCUNTHORPE,
NORTH LINCOLNSHIRE, DN15 8XE
t: 01724 289119
FOR TECHNICAL ASSISTANCE CONTACT
john.cudlipp@saferoad.co.uk

DRAWING NUMBER: REVn:

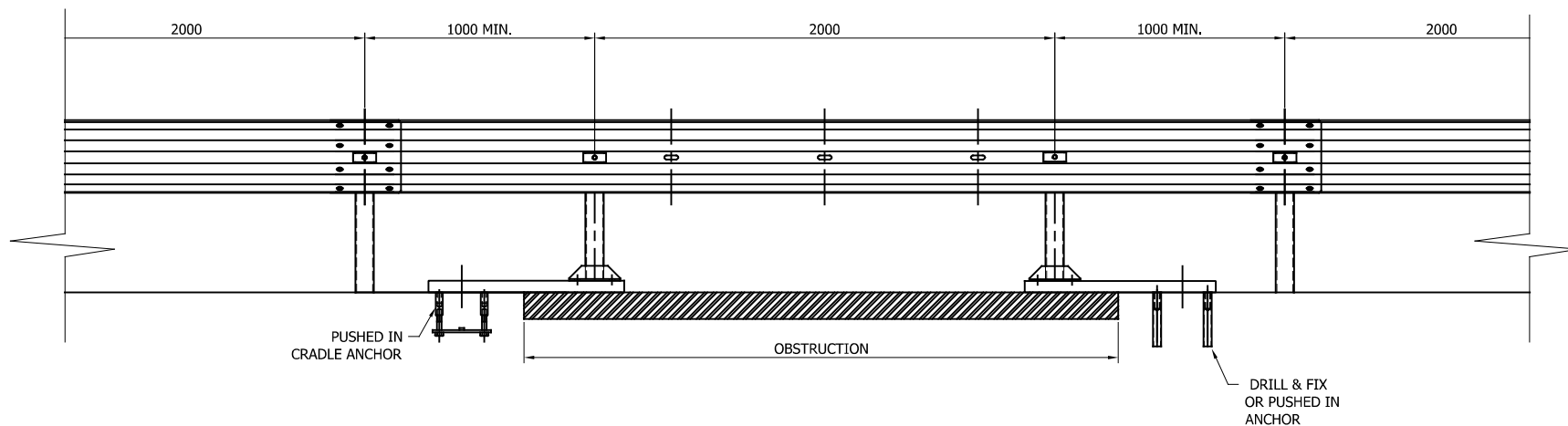
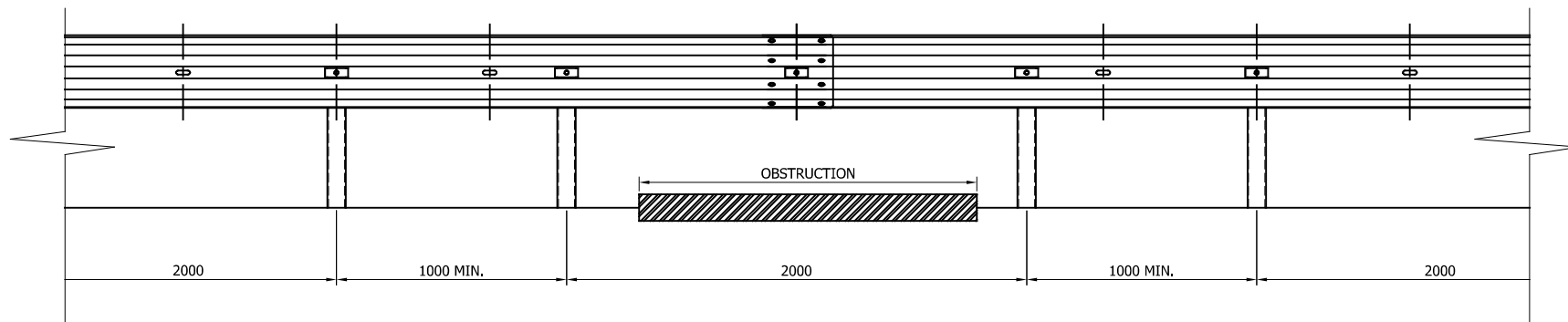
MR-C120N2W1-GA-20 03

GENERAL NOTES:

1. POSTS ARE TO BE INSTALLED WITH THE CLOSED FACE OF THE CHANNEL TOWARDS THE ON-COMING TRAFFIC.

** BEAM REFERENCES i.e. LEFT / RIGHT HAND ARE FOR VERGE INSTALLATIONS; FOR CENTRAL RESERVATION INSTALLATIONS THE REFERENCES ARE REVERSED

| REVn | DATE | DETAILS | INITIAL |
|------|----------|----------------------|---------|
| 03 | 21/11/24 | DRAWING UPDATED | H.B |
| 02 | 21/12/23 | PART NUMBERS UPDATED | H.B |
| 01 | 19/05/23 | DETAIL UPDATED | H.B |
| 00 | 30/08/22 | DRAWING CREATED | H.B |



GENERAL NOTES:

- IF THE SITE CONDITIONS DO NOT ALLOW A POST TO BE INSTALLED ON THE SYSTEM PITCH DEVIATIONS CAN BE APPLIED. THE OBSTRUCTED POST CAN BE LEFT OUT AND EXTRA POSTS INSTALLED TO SPAN THE OBSTRUCTION AS PER THIS DRAWING. ALTHOUGH IT WOULD BE BENEFICIAL TO USE THE HOLES ALREADY IN THE BEAM IT IS ACCEPTABLE TO DRILL NEW HOLES IN THE DESIRED POSITIONS AND TREAT WITH ZINC RICH PAINT.
- OFFSET POSTS SHOWN ON DRAWING MR-C120N2W1-GA-00 CAN BE USED.

| REVn | DATE | DETAILS | INITIAL |
|------|----------|----------------------------|---------|
| 03 | 21/11/24 | DRAWING UPDATED | H.B |
| 02 | 21/12/23 | LOGO UPDATED | H.B |
| 01 | 19/05/23 | DEVIATION TOLERANCE CHANGE | H.B |
| 00 | 30/08/22 | DRAWING CREATED | H.B |

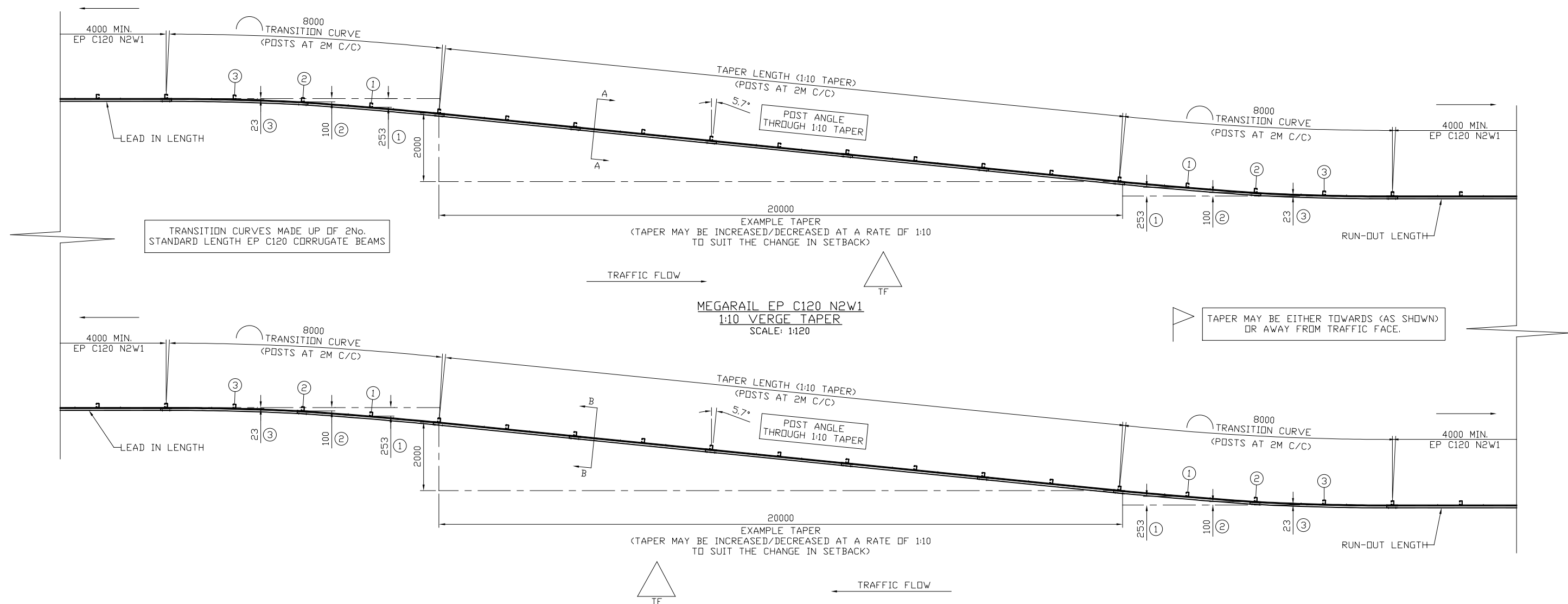
MEGARAIL EP-C120 N2/W1

DETAILS OF PERMISSIBLE
DEVIATIONS FOR POST POSITONS



CONCORD HOUSE,
BESSEMER WAY, SCUNTHORPE,
NORTH LINCOLNSHIRE, DN15 8XE
t: 01724 289119
FOR TECHNICAL ASSISTANCE CONTACT
john.cudlipp@saferoad.co.uk

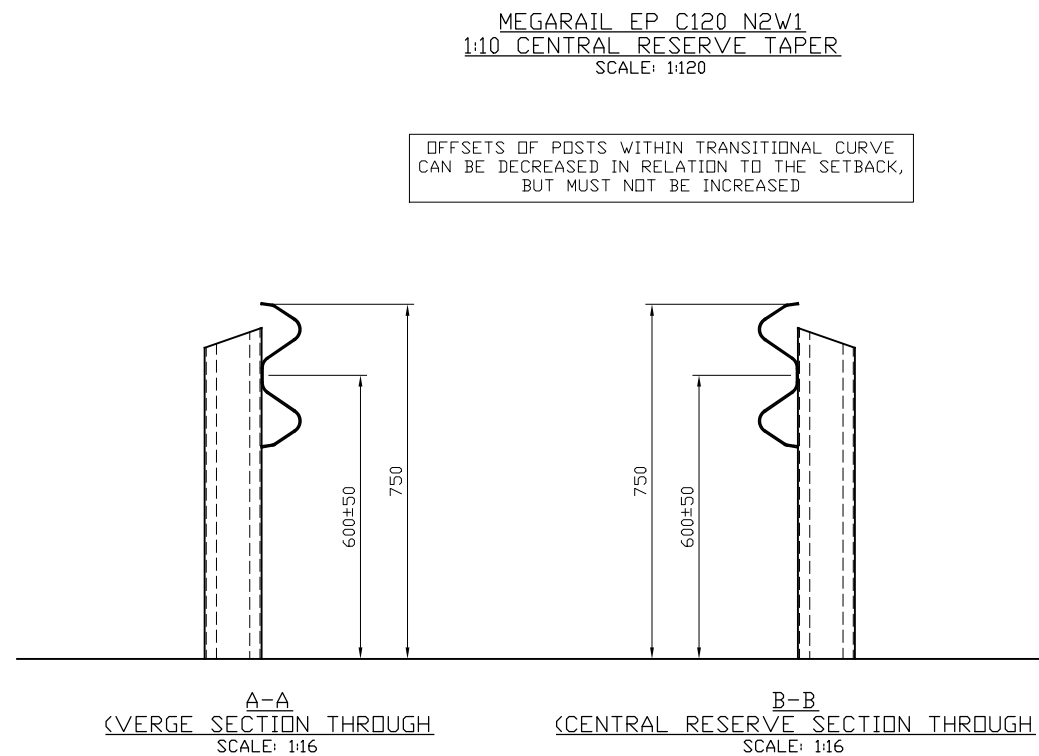
| | |
|-------------------|-------|
| DRAWING NUMBER: | REVn: |
| MR-C120N2W1-GA-40 | 03 |



GENERAL NOTES;

1. ALL DIMENSIONS IN MILLIMETRES UNLESS NOTED OTHERWISE.
2. FOR GENERAL DETAILS REGARDING MEGARAIL EP C120 N2W1, SEE SYSTEM MANUAL DRAWINGS
3. FOR MINIMUM LENGTH OF FULL HEIGHT VRS, REFER TO SAFEROAD MEGARAIL MANUAL.
4. CHANGES IN HORIZONTAL ALIGNMENT BETWEEN THE LEAD IN AND RUN-OUT LENGTHS OF MEGARAIL EP C120 ARE TO TAKE PLACE UNIFORMLY OVER THE TAPER LENGTH
5. WHERE CHANGES IN HORIZONTAL ALIGNMENT OCCUR (WHICH MAY ALSO BE DUE TO THE ALTERNATE METHODOLOGY FOR DETERMINING REFERENCE HEIGHT OF BARRIERS - REFER TO MR-GA-001) THIS MAY RESULT IN LOCAL ISLOATED AREAS OF FENCE THAT ARE OUTSIDE THE RANGE OF PERMISSIBLE DIMENSIONS
6. WHERE THE RATE OF CHANGE IN SET BACK IS LESS THAN 1:30 (I.E 1:35), NO TAPER ARRANGEMENT IS REQUIRED.
7. OFFSETS OF POSTS IN TRANSITIONAL CURVE CAN BE DECREASED IN RELATION TO THE SETBACK, BUT MUST NOT BE INCREASED

TAPER MAY BE TOWARDS (AS SHOWN) OR AWAY FROM TRAFFIC FACE. IN BOTH CIRCUMSTANCES, DETAILS SHOWN IN THE ABOVE DRAWING MUST BE IMPLEMENTED.



| | | | |
|------|----------|-----------------|---------|
| | | | |
| 01 | 21/12/23 | LOGO UPDATED | H.B |
| 00 | 31/10/23 | DRAWING CREATED | H.B |
| REVn | DATE | DETAILS | INITIAL |

MEGARAIL
EP-C120 N2/W1
VERGE AND CENTRAL RESERVE
TAPER GENERAL ARRANGEMENTS



CONCORD HOUSE,
BESSEMER WAY, SCUNTHORPE,
NORTH LINCOLNSHIRE, DN15 8XE
T: 01724 289119
FOR TECHNICAL ASSISTANCE CONTACT
john.cudlipp@saferoad.co.uk

| | |
|-------------------|-------|
| DRAWING NUMBER: | REVn: |
| MR-C120N2W1-GA-41 | 01 |