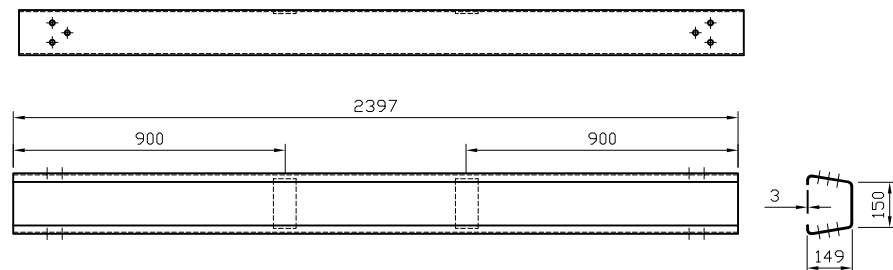
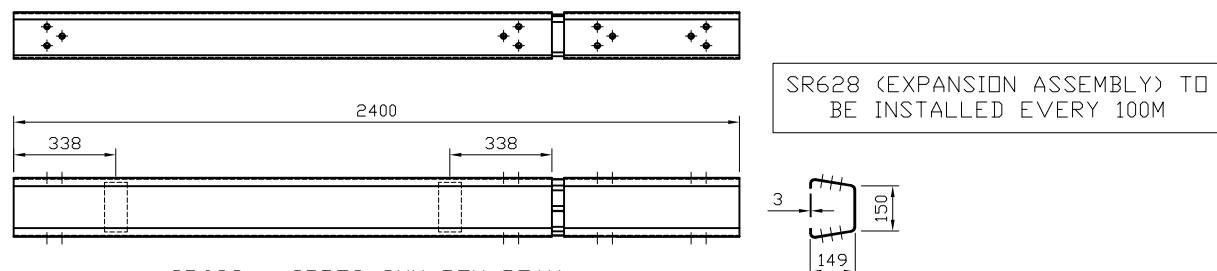


SR585 - SRB03 3MM BOX BEAM

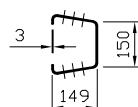


SR627 - SRB04 3MM HALF BOX BEAM



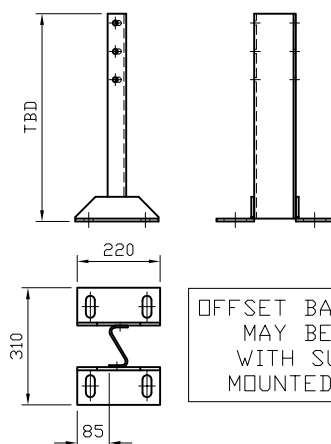
SR628 - SRB78 3MM BOX BEAM
EXPANSION ASSEMBLY

SR628 (EXPANSION ASSEMBLY) TO
BE INSTALLED EVERY 100M



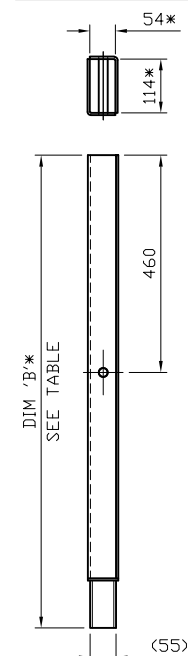
*** - SURFACE MOUNTED POST
VERGE OR CENTRAL RESERVE PREFIX:
SR591.V - VERGE
SR591.CR - CENTRAL RESERVE

SURFACE MOUNTED POSTS
FABRICATED AS REQUIRED.
HEIGHT TO BE DETERMINED



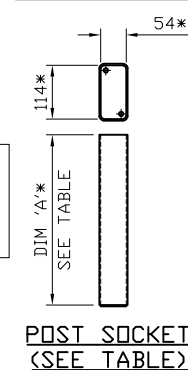
*** SR591 - SRA18
SURFACE MOUNTED POST

* - INTERNAL
DIMENSION

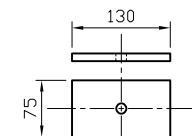


DRIVEN FOUNDATION
(SEE TABLE)

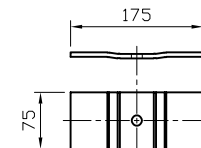
* - INTERNAL
DIMENSION



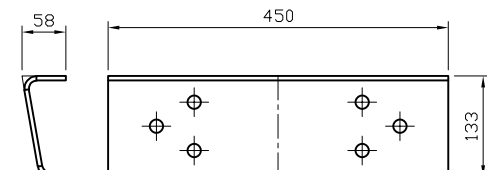
POST SOCKET
(SEE TABLE)



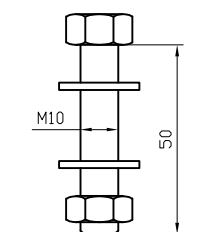
NP583 - B49A
CLAMP PLATE



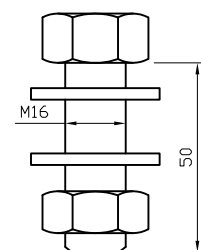
SR588 - SRB17
CLAMP PLATE



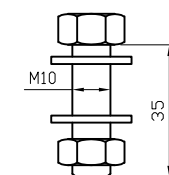
SR587 - SRB12
FISH PLATE
(JOINT)



NP502 - F02A
BOLT ASSEMBLY



NP719 - F06
BOLT ASSEMBLY



NP501 - F02
BOLT ASSEMBLY



SR100 - REINFORCING RING

| DRIVEN FOUNDATIONS | |
|--------------------|---------|
| COMPONENT NUMBER | DIM 'A' |
| SR621 | 1000 |
| SR622 | 1200 |
| SR623 | 1400 |

| POST SOCKETS | |
|------------------|---------|
| COMPONENT NUMBER | DIM 'A' |
| NP538 | 360 |
| NP539 | 380 |
| NP540 | 400 |
| NP541 | 420 |
| NP542 | 450 |
| NP543 | 470 |
| NP544 | 500 |
| NP545 | 520 |
| NP546 | 550 |
| NP547 | 570 |
| NP548 | 600 |
| NP549 | 625 |

| REVn | DATE | DETAILS | INITIAL |
|------|----------|-----------------|---------|
| 01 | 14/03/25 | DRAWING UPDATED | H.B |
| 00 | 05/12/24 | DRAWING CREATED | H.B |

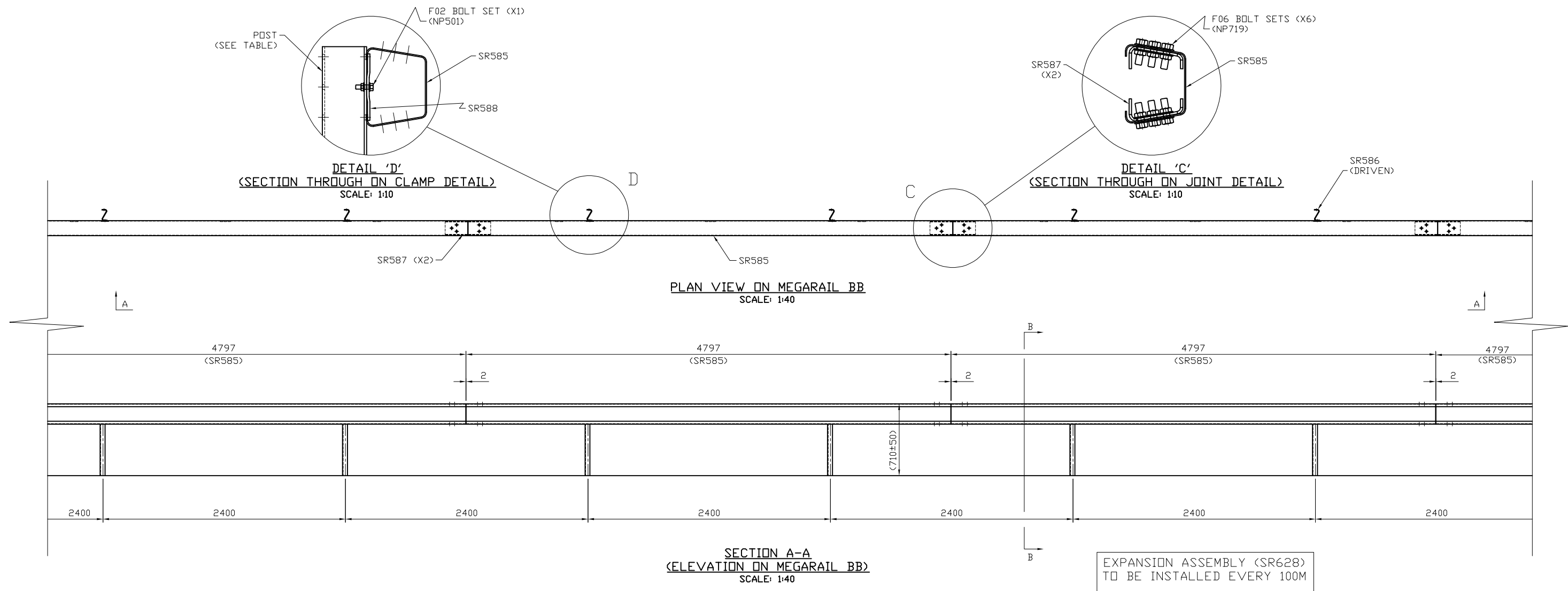
MEGARAIL BB (BOX BEAM)

COMPONENTS SCHEMATIC



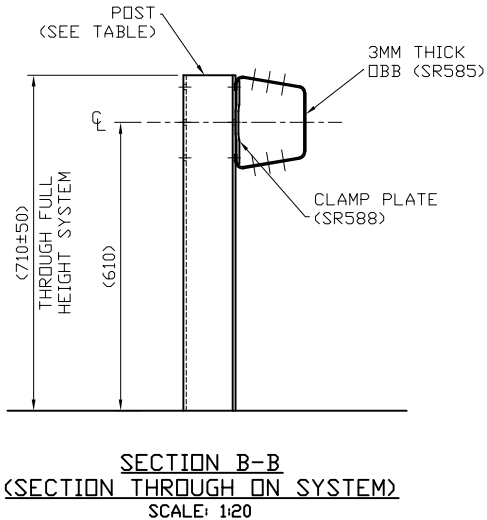
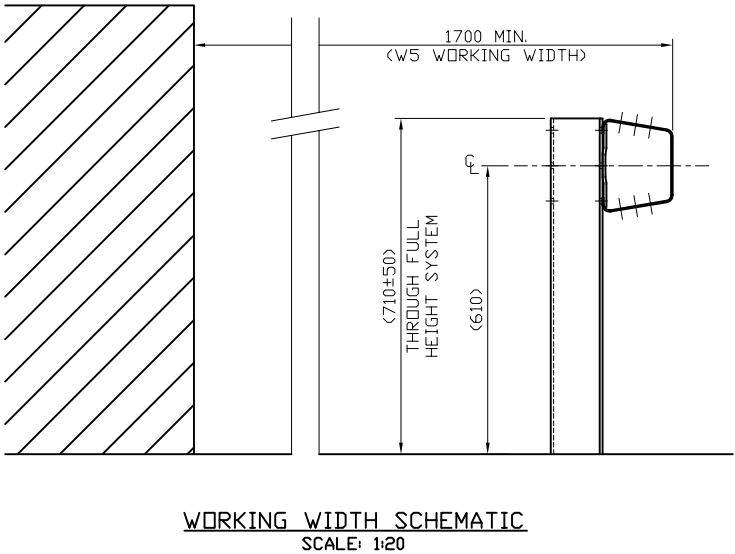
CONCORD HOUSE,
BESSEMER WAY, SCUNTHORPE,
NORTH LINCOLNSHIRE, DN15 8XE
T: 01724 289119
FOR TECHNICAL ASSISTANCE CONTACT
john.cudlipp@saferoad.co.uk

| DRAWING NUMBER: | REVn: |
|-----------------|-------|
| MRBB-GA-00 | 01 |



| POST TYPES | |
|----------------------|------------------------------------|
| SAFEROAD PART NUMBER | POST DESCRIPTION |
| SR591 | SURFACE MOUNTED POST |
| SR590 | SOCKETED POST 1160MM LONG |
| SR586 | DRIVEN POST 1700MM LONG |
| SR619 | LONG DRIVEN POST 2000MM LONG |
| SR620 | EXTRA LONG DRIVEN POST 2400MM LONG |

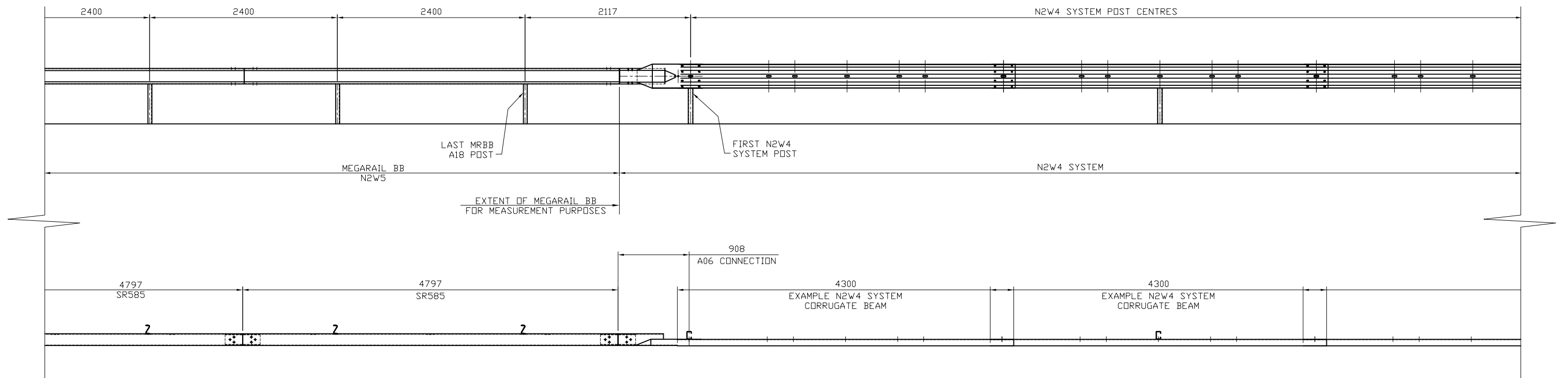
| SYSTEM COMPONENT SCHEDULE (P/4.797M BEAM) | | |
|---|-------------------------------|-----|
| SAFEROAD PART NUMBER | DESCRIPTION | QTY |
| SR585 | SRB03 BOX BEAM 4797x3mm THICK | 1 |
| SEE TABLE | SRA18 POST 5mm THICK | 2 |
| SR587 | SRB12 FISH PLATES (JOINTS) | 2 |
| SR588 | SRB17 CLAMP PLATES | 2 |



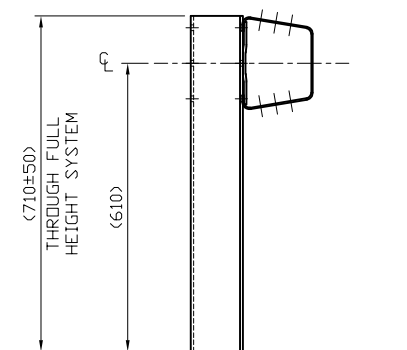
| | | | |
|---|----------|-----------------|---------|
| | | | |
| | | | |
| | | | |
| 00 | 05/12/24 | DRAWING CREATED | H.B |
| REVn | DATE | DETAILS | INITIAL |
| MEGARAIL BB (BOX BEAM) | | | |
| GENERAL ARRANGEMENT | | | |
| SAFEROAD | | | |
| CONCORD HOUSE, BESSEMER WAY, SCUNTHORPE, NORTH LINCOLNSHIRE, DN15 8XE T: 01724 289119 FOR TECHNICAL ASSISTANCE CONTACT john.cudlipp@saferoad.co.uk | | | |
| DRAWING NUMBER: | | | REVn: |
| MRBB-GA-01 | | | 00 |

SEE MRBB-GA-01 FOR MEGARAIL BB
GENERAL ARRANGEMENT & INSTALLATION DETAILS

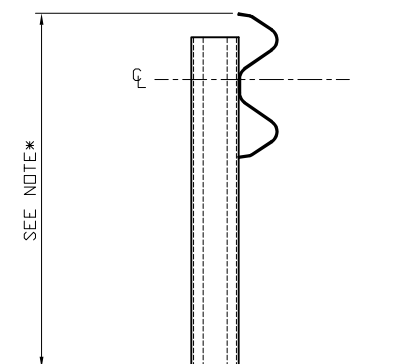
SEE MEGARAIL MANUAL FOR
AVAILABLE N2W4 SYSTEMS



USE HEIGHT TOLERANCE IN N2W4
SYSTEM TO MAINTAIN A FLOWING ALIGNMENT

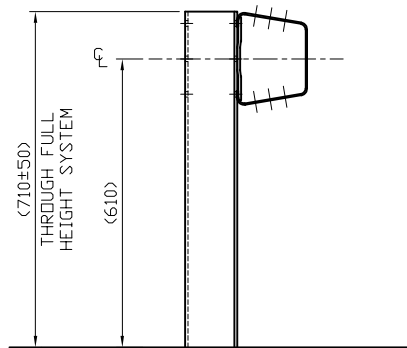
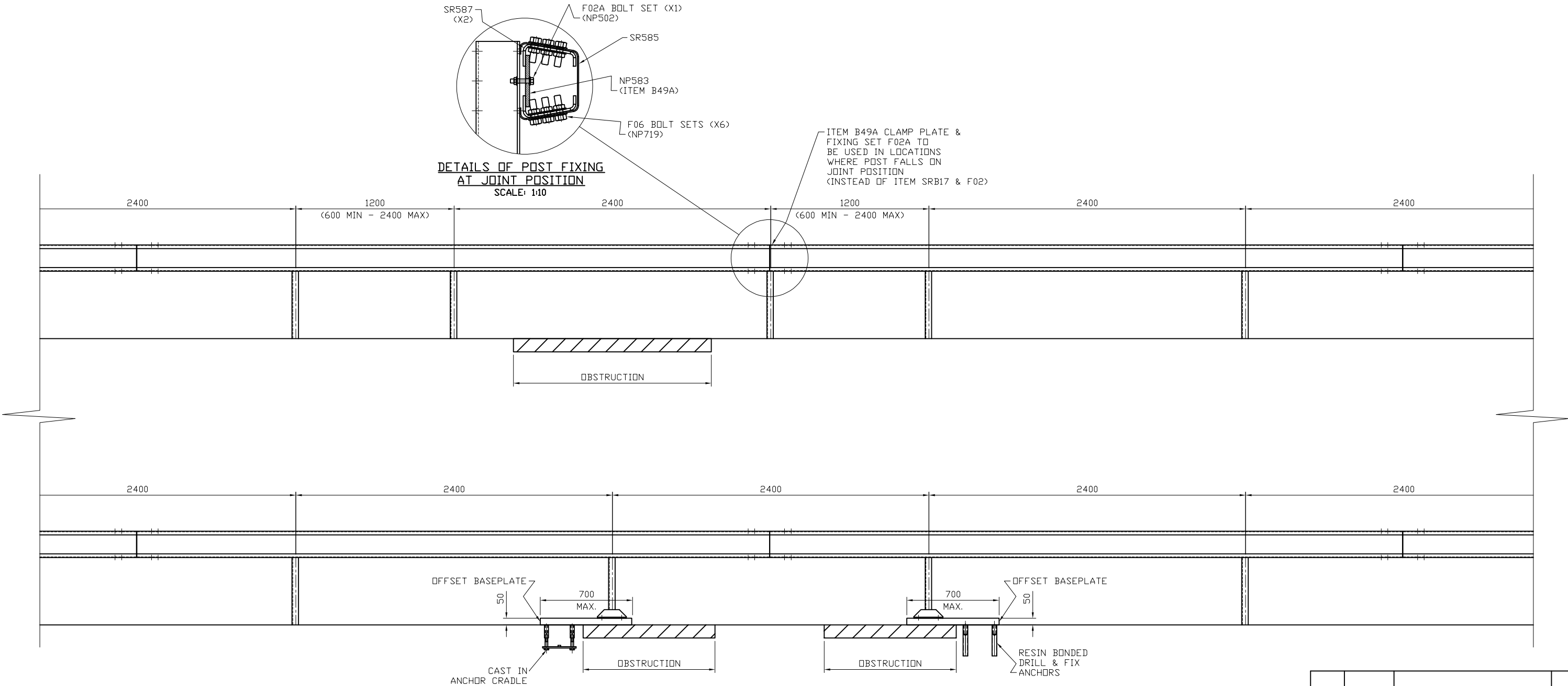


SECTION THROUGH
ON MEGARAIL BB
SCALE: 1:20



SECTION THROUGH
ON N2W4 SYSTEM
SCALE: 1:20

| | | | |
|---|----------|-----------------|---------|
| | | | |
| | | | |
| | | | |
| | | | |
| 00 | 14/03/25 | DRAWING CREATED | H.B |
| REVn | DATE | DETAILS | INITIAL |
| MEGARAIL BB (BOX BEAM) | | | |
| SYSTEM PROGRESSION DETAILS | | | |
| <div><div></div><div>SAFEROAD</div></div> | | | |
| CONCORD HOUSE, BESSEMER WAY, SCUNTHORPE, NORTH LINCOLNSHIRE, DN15 8XE T: 01724 289119 FOR TECHNICAL ASSISTANCE CONTACT john.cudlipp@saferoad.co.uk | | | |
| DRAWING NUMBER: | | | REVn: |
| MRBB-GA-20 | | | 00 |



SECTION THROUGH ON MEGARAIL BB SCALE: 1:20

| | | | |
|------|----------|-----------------|---------|
| | | | |
| | | | |
| | | | |
| | | | |
| 00 | 14/03/25 | DRAWING CREATED | H.B |
| REVn | DATE | DETAILS | INITIAL |

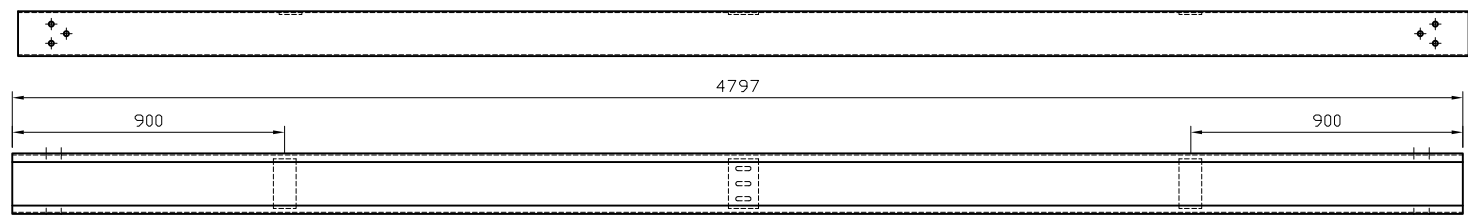
MEGARAIL BB (BOX BEAM)

PERMISSIBLE DEVIATION DETAILS

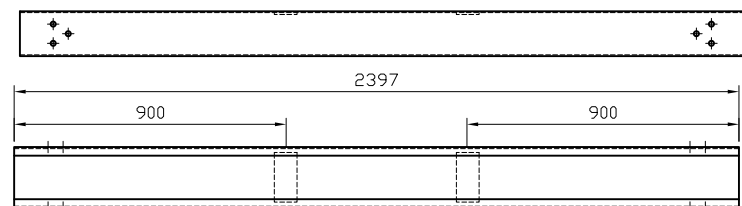


CONCORD HOUSE,
BESSEMER WAY, SCUNTHORPE,
NORTH LINCOLNSHIRE, DN15 8XE
T: 01724 289119
FOR TECHNICAL ASSISTANCE CONTACT
john.cudlipp@saferoad.co.uk

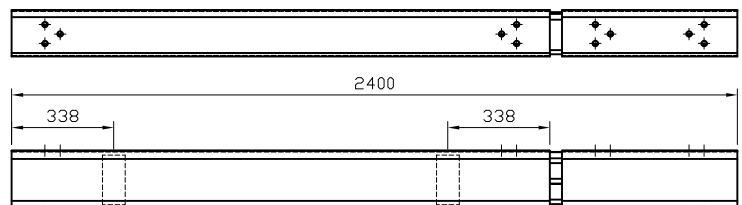
| | |
|-----------------|-------|
| DRAWING NUMBER: | REVn: |
| MRBB-GA-40 | 00 |



SR585 - SRB03 3MM BOX BEAM
OR
NP555 - NPSBS B03 5MM BOX BEAM



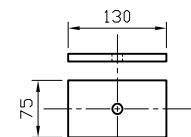
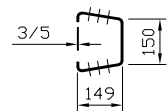
SR627 - SRB04 3MM HALF BOX BEAM
OR
NP556 - NPSBS B04 5MM HALF BOX BEAM



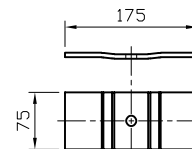
SR628 - SRB78 3MM BOX BEAM EXPANSION ASSEMBLY
OR
NP598 - NPSBS B78 5MM BOX BEAM EXPANSION ASSEMBLY

BEAM THICKNESSES:
MEGARAIL BB - 3MM
NPSBS OPEN BOX BEAM - 5MM

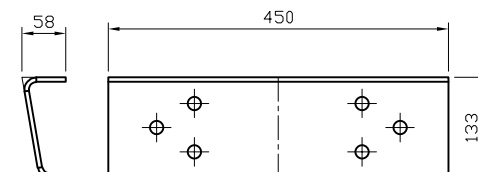
NPSBS OPEN BOX BEAM COMPONENTS MAY BE REPLACED BY ALL COMPONENTS LISTED ON GA-41 & GA-00. THE ONLY RESTRICTION TO THIS IS THAT POSTS & BEAMS MUST BE REPLACED IN CONJUNCTION E.G AN MRBB RAIL MUST BE INSTALLED WITH SRA18 POSTS/POST VARIANTS. ALL REPAIRS & RENEWALS SHALL BE CARRIED OUT IN ACCORDANCE WITH BS:7669-3



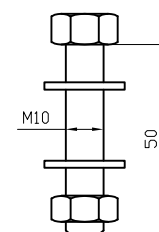
NP583 - B49A
CLAMP PLATE



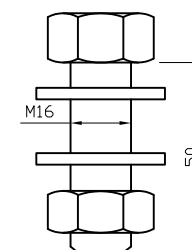
SR588 - SRB17 CLAMP PLATE
OR
NP580 - NPSBS B17 CLAMP PLATE



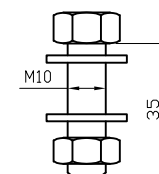
SR587 - SRB12 FISH PLATE (JOINT)
OR
NP578 - NPSBS B12 FISH PLATE



NP502 - F02A
BOLT ASSEMBLY

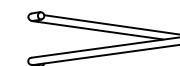


NP719 - F06
BOLT ASSEMBLY

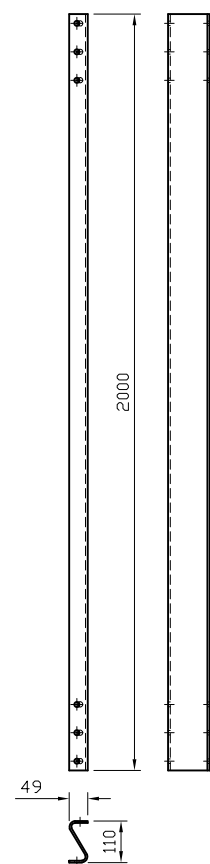


NP501 - F02
BOLT ASSEMBLY

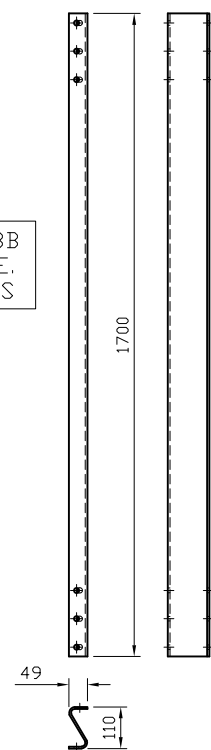
EXISTING SOCKETS/FOUNDATIONS MAY BE RE-USED IF UN-DAMAGED. IF NEW SOCKETS/FOUNDATIONS ARE REQUIRED, SEE GA-00 FOR COMPONENT DETAILS



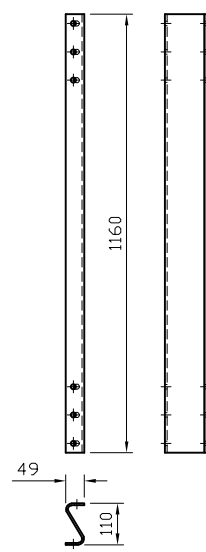
SR100 - REINFORCING RING



ADDITIONAL MEGARAIL BB POST TYPES AVAILABLE. SEE GA-00 FOR DETAILS

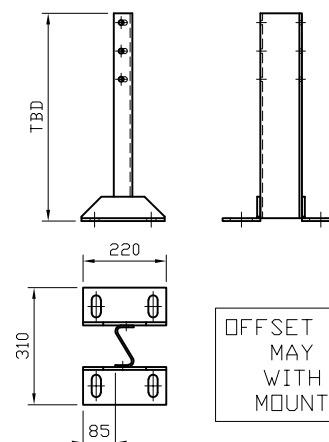


SR586 - SRA18 DRIVEN POST
OR
NP531/NP532 - NPSBS A19/A30 POST
(MEGARAIL BB POST SHOWN)



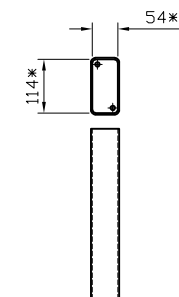
SR590 - SRA18 SOCKETED POST
OR
NP530 - NPSBS A18 POST
(MEGARAIL BB POST SHOWN)

SURFACE MOUNTED POSTS FABRICATED AS REQUIRED. HEIGHT TO BE DETERMINED



SR591V/SR591CR - SRA18 SURFACE MOUNTED POST
OR
NP535/NP536 - NPSBS A37/A54 SURFACE MOUNTED POST
(MEGARAIL BB POST SHOWN)

* - INTERNAL DIMENSION



POST SOCKET

OFFSET BASEPLATES MAY BE USED WITH SURFACE MOUNTED POSTS

| REVn | DATE | DETAILS | INITIAL |
|------|----------|-----------------|---------|
| 01 | 20/08/25 | NOTE UPDATED | H.B |
| 00 | 21/03/25 | DRAWING CREATED | H.B |

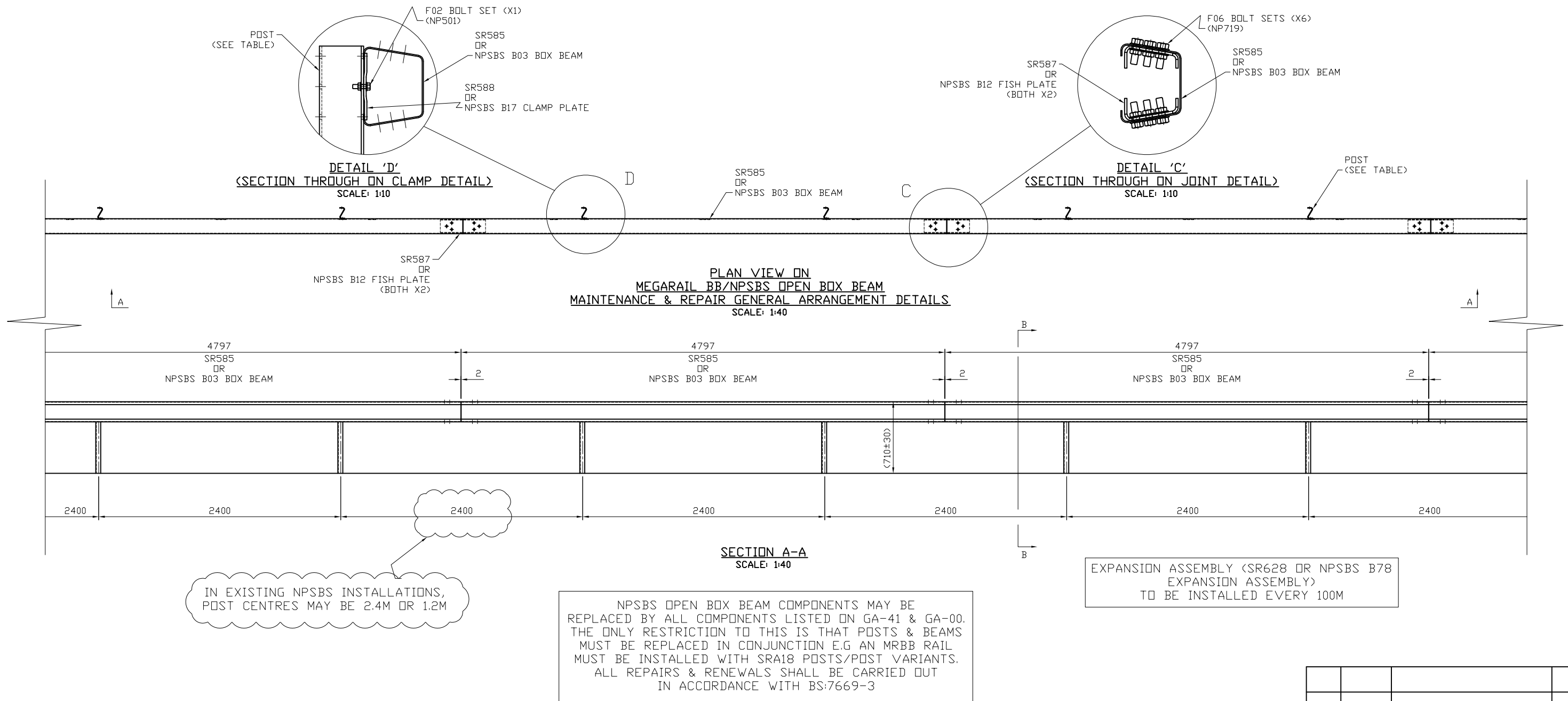
MEGARAIL BB / NPSBS OBB

MAINTENANCE & REPAIR COMPONENTS SCHEMATIC



CONCORD HOUSE,
BESSEMER WAY, SCUNTHORPE,
NORTH LINCOLNSHIRE, DN15 8XE
T: 01724 289119
FOR TECHNICAL ASSISTANCE CONTACT
john.cudlipp@saferoad.co.uk

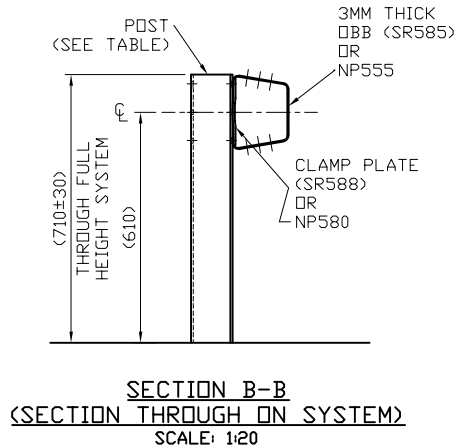
| | |
|-----------------|-------|
| DRAWING NUMBER: | REVn: |
| MRBB-GA-41 | 01 |



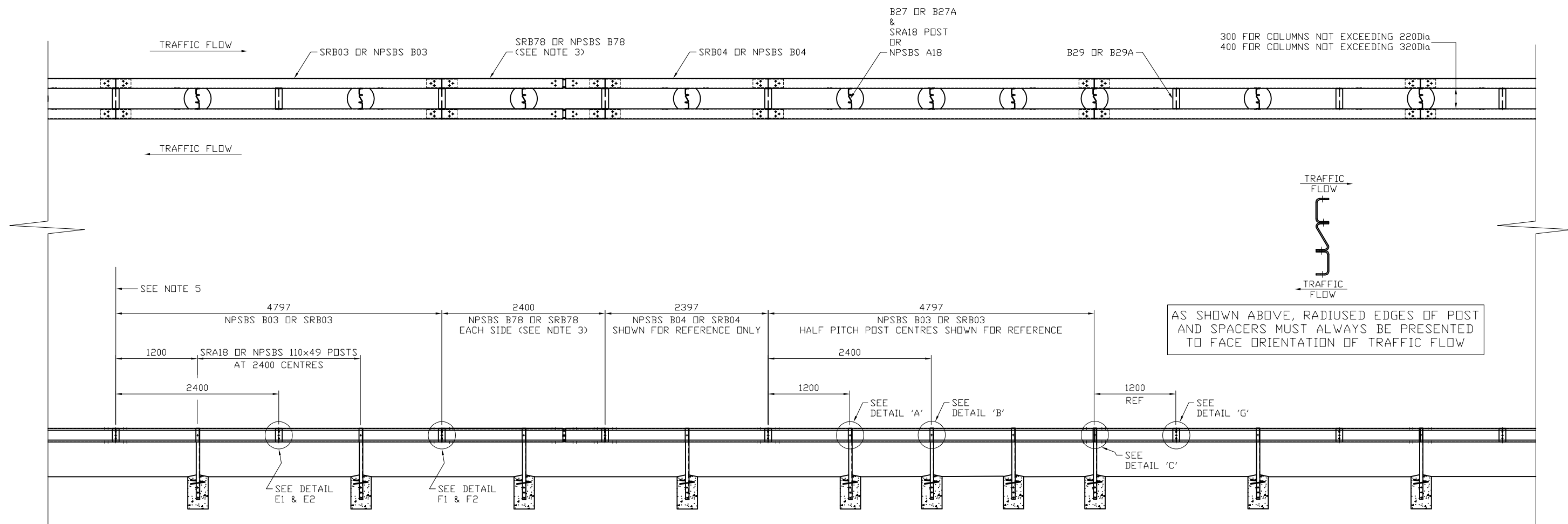
| MEGARAIL BB & NPSBS OPEN BOX BEAM POST TYPES | | |
|--|-------------------------|--------------------------|
| POST LENGTH | MRBB ITEM REFERENCE | NPSBS OBB ITEM REFERENCE |
| SURFACE MOUNTED | SRA18 SMP | A37/A54 |
| 1160MM | SRA18 SOCKETED | A18 |
| 1700MM | SRA18 DRIVEN | A19/A30 |
| 2000MM (MRBB) - 1900MM (NPSBS OBB) | SRA18 LONG DRIVEN | A55/A56 |
| 2400MM | SRA18 EXTRA LONG DRIVEN | - |

| SYSTEM COMPONENT SCHEDULE (P/4.797M BEAM) - MRBB OR NPSBS OBB | | |
|---|-----------------------------|-----|
| MRBB ITEM REFERENCE | NPSBS ITEM REFERENCE | QTY |
| SRB03 BOX BEAM 4797x3mm THICK | B03 BOX BEAM 4797x5mm THICK | 1 |
| POSTS - SEE TABLE | POSTS - SEE TABLE | 2 |
| SRB12 FISH PLATES (JOINTS) | B12 FISH PLATES (JOINTS) | 2 |
| SRB17 CLAMP PLATES | B17 CLAMP PLATES | 2 |

EXISTING SOCKETS/FOUNDATIONS
MAY BE RE-USED IF UN-DAMAGED.
IF NEW SOCKETS/FOUNDATIONS
ARE REQUIRED, SEE GA-00
FOR COMPONENT DETAILS

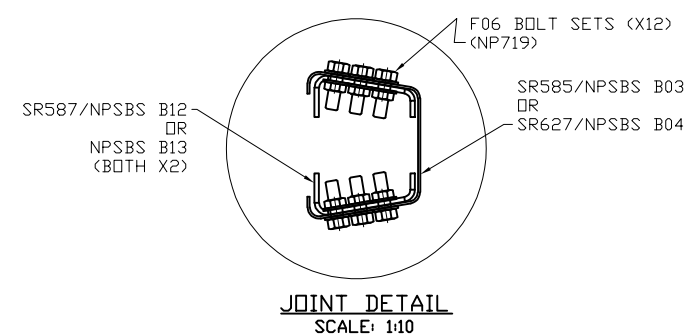


| 02 | 28/08/25 | TABLE UPDATED | H.B |
|--|----------|-----------------|-----------------|
| 01 | 20/08/25 | NOTE UPDATED | H.B |
| 00 | 21/03/25 | DRAWING CREATED | H.B |
| REVn | DATE | DETAILS | INITIAL |
| MEGARAIL BB / NPSBS OBB GENERAL ARRANGEMENT DETAILS FOR MAINTENANCE & REPAIR | | | |
| SAFEROAD CONCORD HOUSE, BESSEMER WAY, SCUNTHORPE, NORTH LINCOLNSHIRE, DN15 8XE T: 01724 289119 FOR TECHNICAL ASSISTANCE CONTACT john.cudlipp@saferoad.co.uk | | | |
| DRAWING NUMBER: MRBB-GA-42 | | | REVn: 02 |



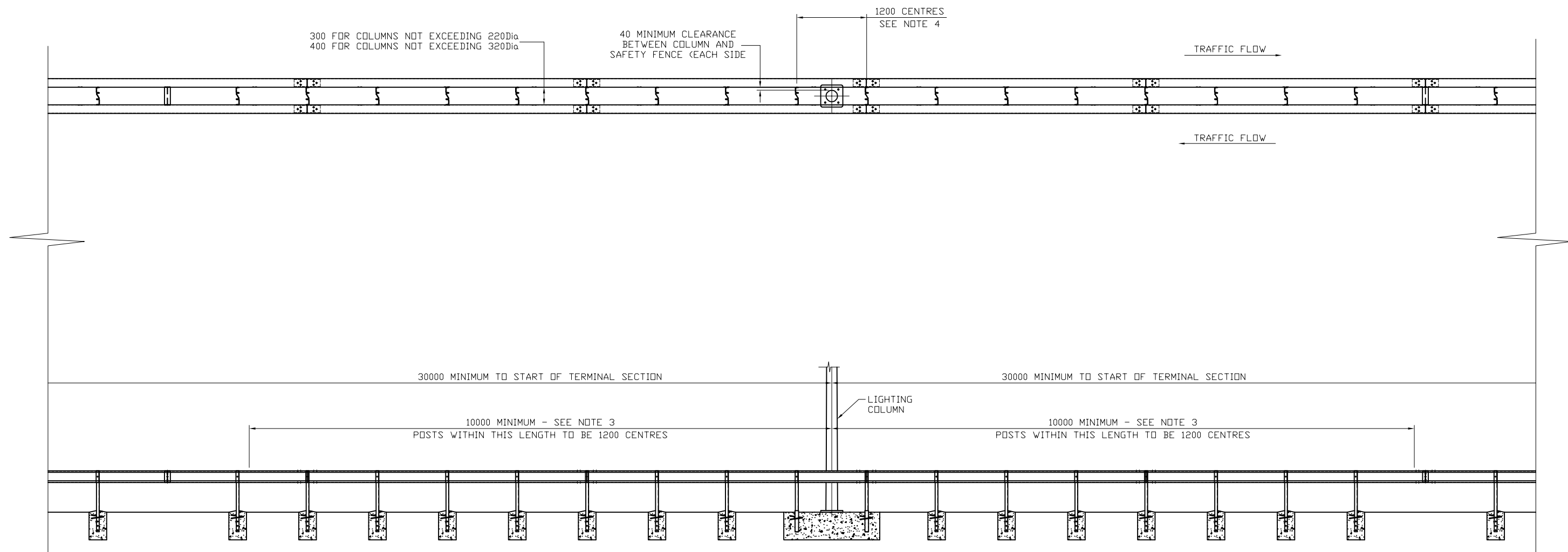
GENERAL NOTES:

- THIS TYPE OF SAFETY FENCE MUST NOT BE USED TO ENCLOSE LIGHTING COLUMNS WHERE THE SPEED LIMIT EXCEEDS 50mph
- DIMENSIONS ARE IN MILLIMETRES UNLESS OTHERWISE STATED
- EXPANSION BEAM ASSEMBLIES NPSBS B78 OR SRB78 (SHOWN FOR REFERENCE ONLY) MUST ALWAYS BE USED IN PAIRS OPPOSITE EACH OTHER.
- WHERE LARGER DIAMETER LIGHTING COLUMNS ARE INSTALLED, CLEARANCE BETWEEN THE BEAMS IS TO BE INCREASED FROM 300mm TO 400mm. THUS ITEM B27A REPLACES ITEM B27 AND ITEM B29A REPLACES B29.
- SAFETY FENCE TERMINATION (8.98M LONG) MAY COMMENCE AT THIS POINT IF REQUIRED. SEE DRAWINGS MRBB-GA-46 & 47.
- FOR ALTERNATIVE POSTS, FOUNDATIONS AND FIXINGS SEE THIS MANUAL, MEGARAIL MANUAL & NPSBS GA/23
- CONCRETE FOUNDATIONS TO BE MIX C25 OR ST5
- FOR DETAILS A TO G INCLUSIVE, SEE MRBB-GA-45
- WHEN SAFETY FENCES ARE ERECTED ON CURVES, USE ITEMS WITHIN TABLE
- THIS DRAWING TO BE READ IN CONJUNCTION WITH MRBB-GA-44 & 47




| RADIUS OF CURVE (M) | BEAM | FISH PLATE |
|---------------------|--------------------|--------------------|
| >50 <110 | NPSBS B04 OR SRB04 | NPSBS B13 |
| >110 <335 | NPSBS B03 OR SRB03 | NPSBS B13 |
| >335 | NPSBS B03 OR SRB03 | NPSBS B12 OR SRB12 |

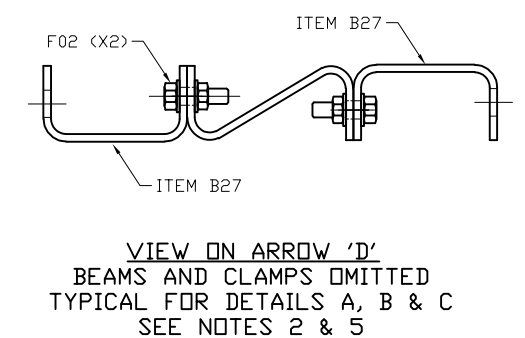
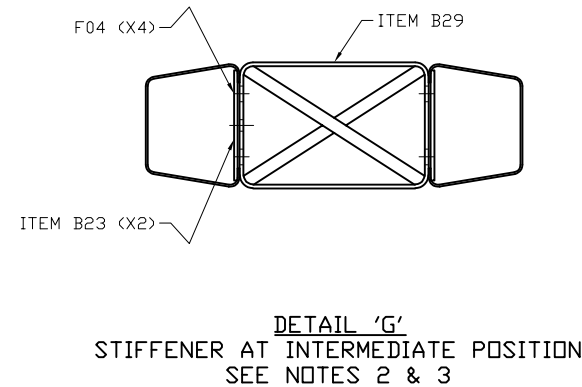
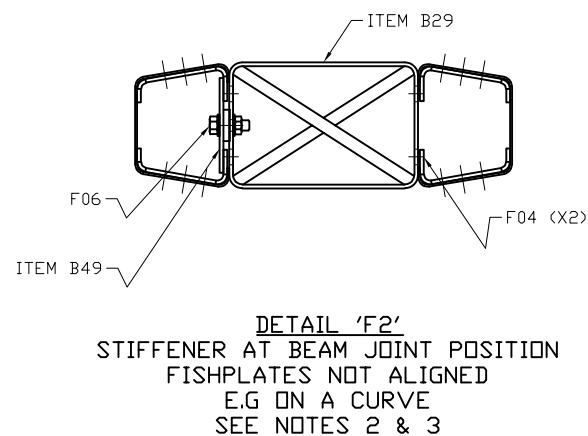
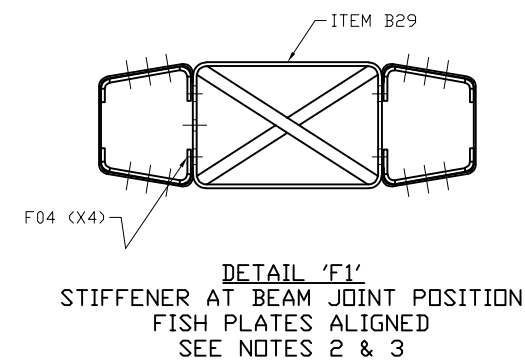
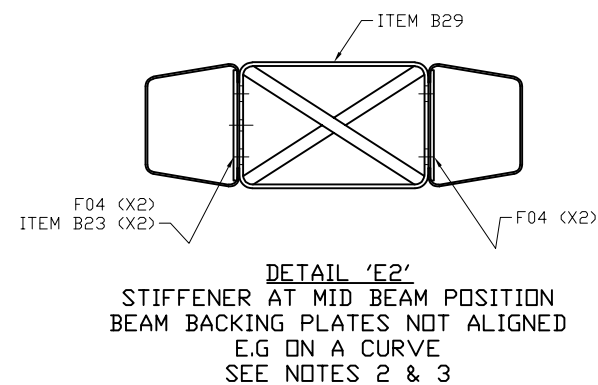
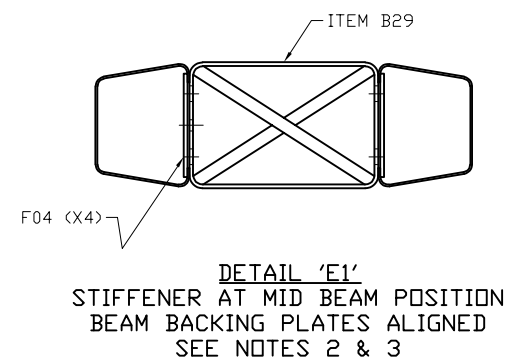
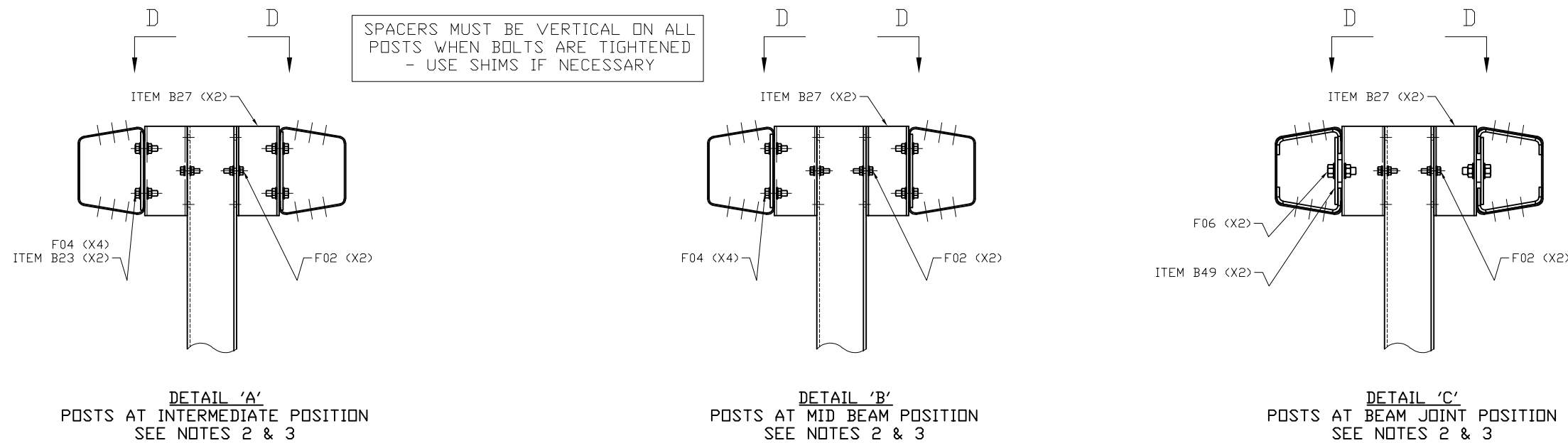
| | | | |
|---|----------|-----------------|---------|
| | | | |
| | | | |
| | | | |
| | | | |
| 00 | 04/09/25 | DRAWING CREATED | H.B |
| REVn | DATE | DETAILS | INITIAL |
| MEGARAIL BB / NPSBS OBB | | | |
| NPSBS DSOBB & DSMRBB | | | |
| ENCLOSING LIGHT COLUMNS (50MPH) | | | |
| | | | |
| CONCORD HOUSE, BESSEMER WAY, SCUNTHORPE, NORTH LINCOLNSHIRE, DN15 8XE T: 01724 289119 FOR TECHNICAL ASSISTANCE CONTACT john.cudlipp@saferoad.co.uk | | | |
| DRAWING NUMBER: | | | REVn: |
| MRBB-GA-43 | | | 00 |



GENERAL NOTES:

1. THIS TYPE OF SAFETY FENCE MUST NOT BE USED TO ENCLOSE LIGHTING COLUMNS WHERE THE SPEED LIMIT EXCEEDS 50mph
2. DIMENSIONS ARE IN MILLIMETRES UNLESS OTHERWISE STATED
3. EXPANSION BEAM ASSEMBLIES MUST NOT BE FITTED IN THESE LENGTHS
4. WHERE POSTS IMMEDIATELY ADJACENT TO LIGHTING COLUMNS OCCUR WITHIN THE COLUMN FOUNDATION, POSTS ARE TO BE MOUNTED IN SOCKETS. SEE MEGARAIL MANUAL & GA/23 FOR SOCKETED FOUNDATION DETAILS
5. WHERE SAFETY FENCES ARE ERECTED ON CURVES, USE ITEMS AS TABULATED IN MRBB-GA-43.
6. FOR FOUNDATION TYPE DETAILS, SEE MEGARAIL MANUAL
7. THIS DRAWING TO BE READ IN CONJUNCTION WITH MRBB-GA-43, 45, 46 & 47

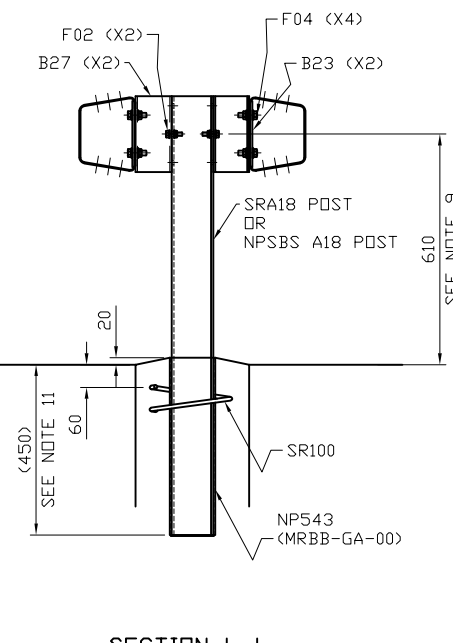
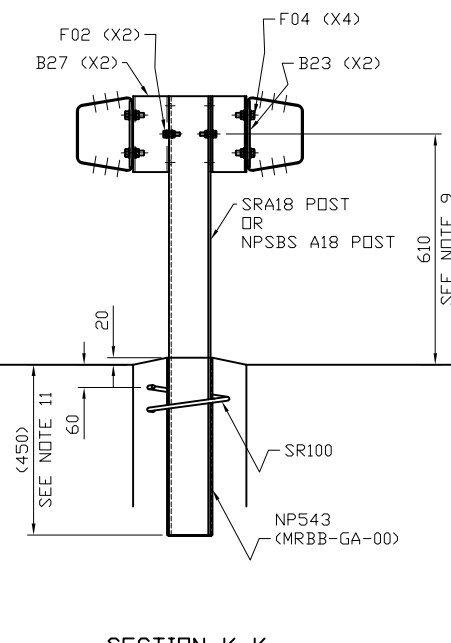
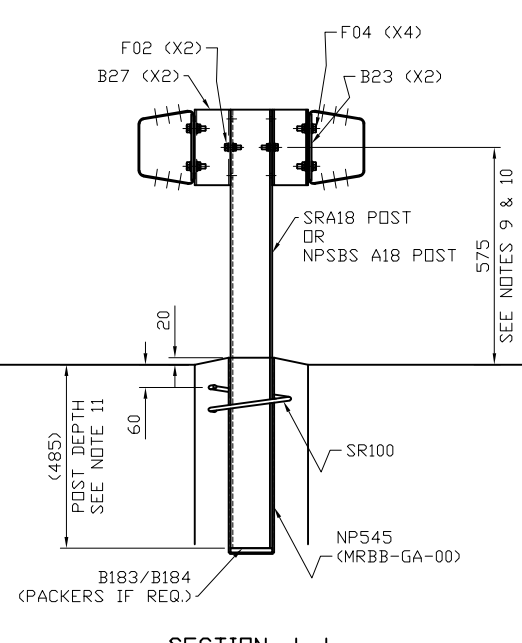
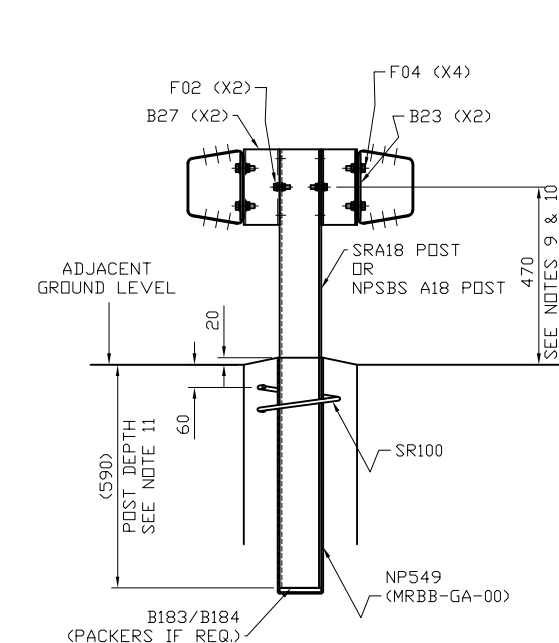
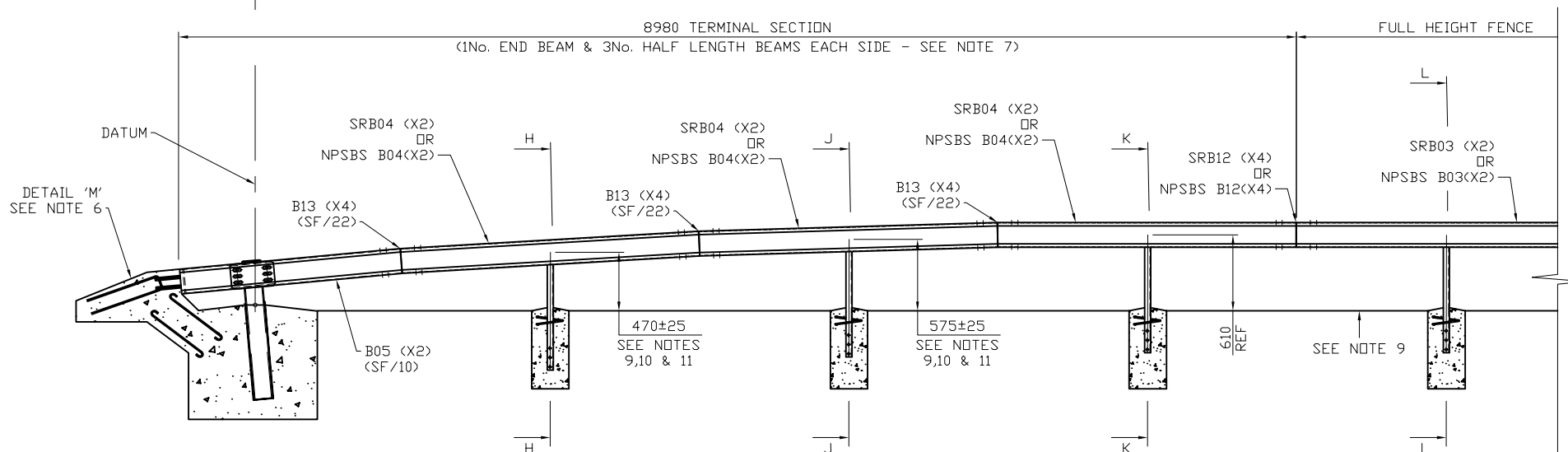
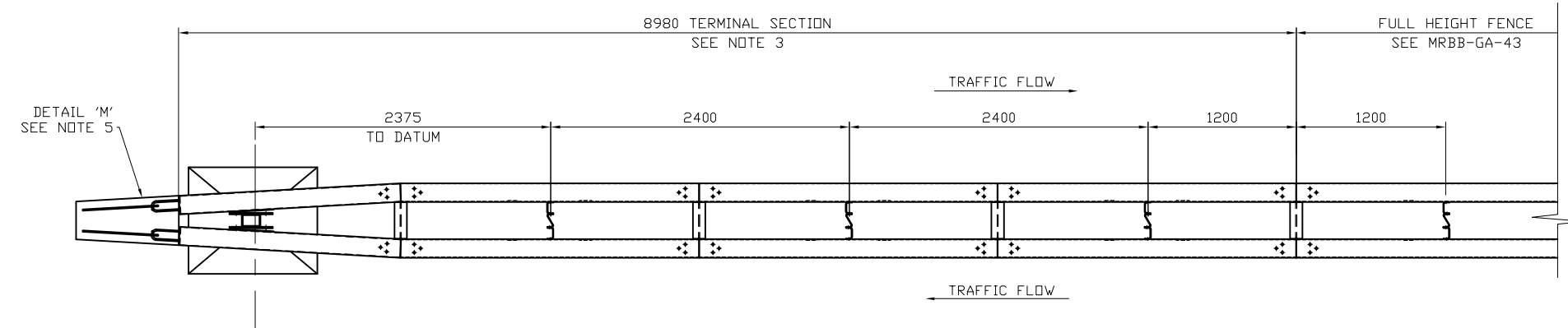
| | | | |
|---|----------|-----------------|---------|
| | | | |
| | | | |
| | | | |
| | | | |
| 00 | 04/09/25 | DRAWING CREATED | H.B |
| REVn | DATE | DETAILS | INITIAL |
| MEGARAIL BB / NPSBS OBB | | | |
| NPSBS DSOBB & DSMRBB | | | |
| ENCLOSING LIGHT COLUMNS (50MPH) | | | |
|  | | | |
| CONCORD HOUSE, BESSEMER WAY, SCUNTHORPE, NORTH LINCOLNSHIRE, DN15 8XE T: 01724 289119 FOR TECHNICAL ASSISTANCE CONTACT john.cudlipp@saferoad.co.uk | | | |
| DRAWING NUMBER: | | | REVn: |
| MRBB-GA-44 | | | 00 |



GENERAL NOTES:

- THIS TYPE OF SAFETY FENCE MUST NOT BE USED TO ENCLOSE LIGHTING COLUMNS WHERE THE SPEED LIMIT EXCEEDS 50mph
- WHERE LARGE DIAMETER LIGHTING COLUMNS ARE INSTALLED, CLEARANCE BETWEEN THE BEAMS IS TO BE INCREASED FROM 300mm TO 400mm. THUS ITEM B27A-SF/24 REPLACES ITEM B27-SF/24 AND ITEM B29A-SF/25 REPLACES ITEM B29-SF/25
- WHERE SAFETY FENCE IS ERECTED ON A CURVE, USE ITEMS AS TABULATED AT NOTE 11, ON DRAWING MRBB-GA-43
- THIS DRAWING TO BE READ IN CONJUNCTION WITH DRAWINGS MRBB-GA-43, 44, 46 AND 47
- RADIUSED EDGES OF POST AND SPACERS MUST ALWAYS BE PRESENTED TO FACE THE DIRECTION OF TRAFFIC FLOW

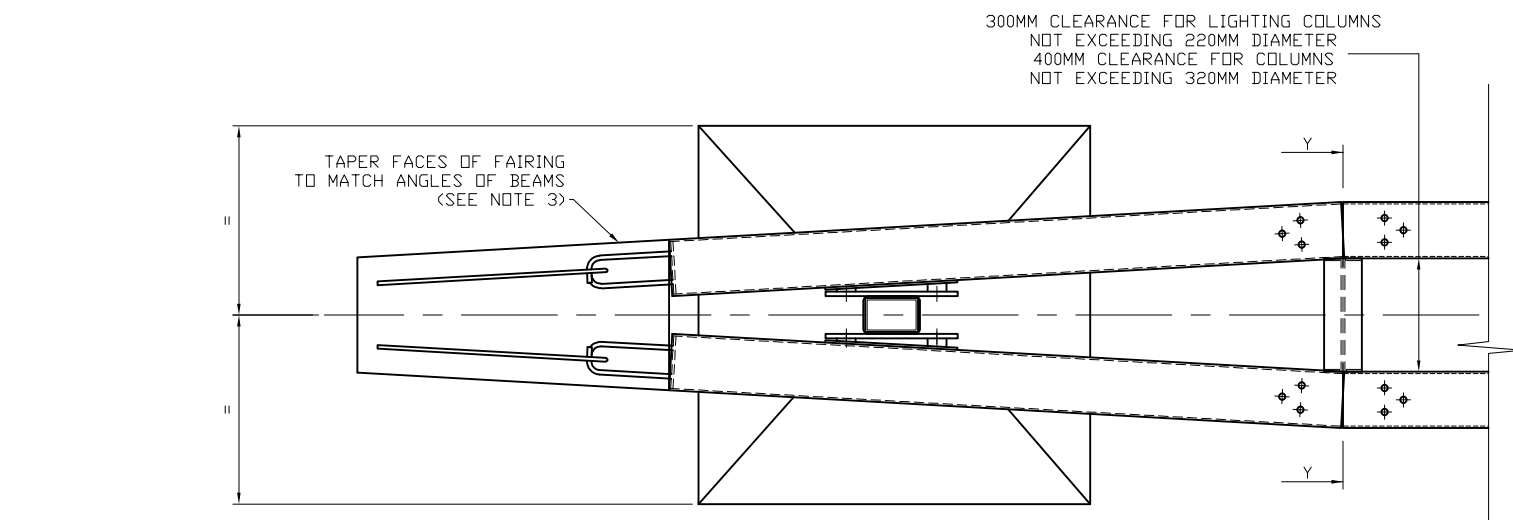
| | | | |
|---|----------|-----------------|---------|
| | | | |
| | | | |
| | | | |
| | | | |
| 00 | 08/09/25 | DRAWING CREATED | H.B |
| REVn | DATE | DETAILS | INITIAL |
| MEGARAIL BB / NPSBS OBB NPSBS DSOBB & DSMRBB ENCLOSING LIGHT COLUMNS (50MPH) | | | |
| | | | |
| CONCORD HOUSE, BESSEMER WAY, SCUNTHORPE, NORTH LINCOLNSHIRE, DN15 8XE T: 01724 289119 FOR TECHNICAL ASSISTANCE CONTACT john.cudlipp@saferoad.co.uk | | | |
| DRAWING NUMBER: | | | REVn: |
| MRBB-GA-45 | | | 00 |



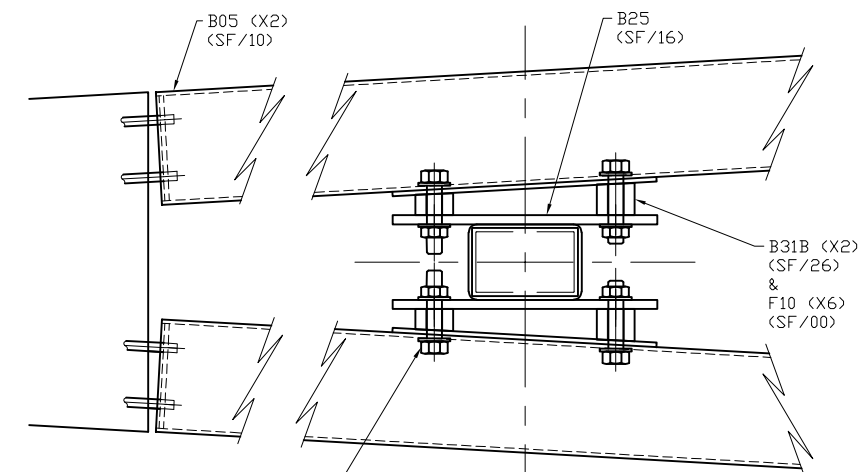
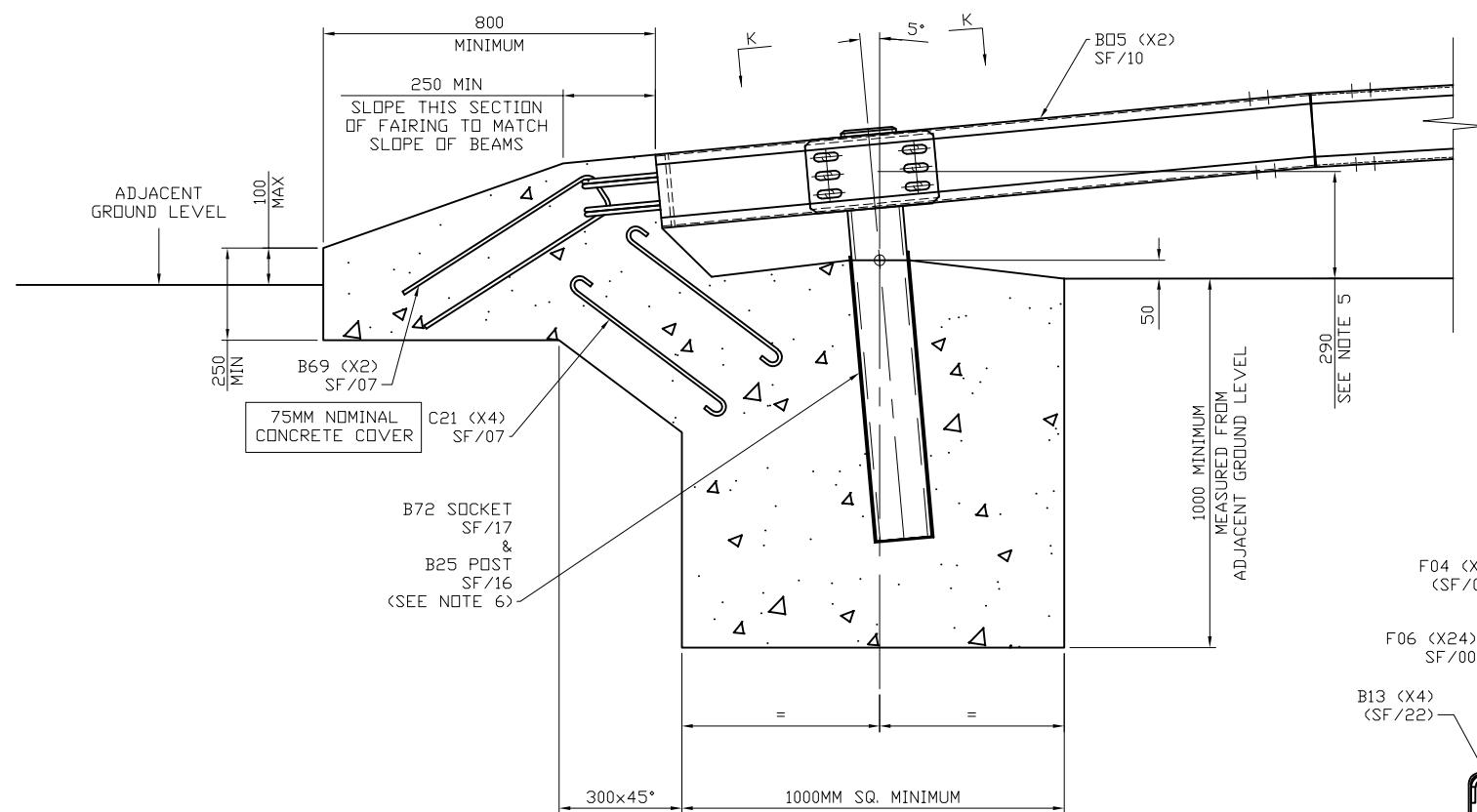
GENERAL NOTES:

1. THIS TYPE OF SAFETY FENCE MUST NOT BE USED TO ENCLOSE LIGHTING COLUMNS WHERE THE SPEED LIMIT EXCEEDS 50mph
2. DIMENSIONS ARE IN MILLIMETRES UNLESS OTHERWISE STATED
3. ON CURVED INSTALLATIONS, WHERE BOTH SIDES TERMINATE AT A COMMON ANCHORAGE, A SPECIAL LENGTH FACTORY FABRICATED BEAM MAY BE NECESSARY TO COMPENSATE FOR THE LENGTH DIFFERENCE BETWEEN TWO SIDES
4. WHERE LARGE DIAMETER LIGHTING COLUMNS ARE INSTALLED, CLEARANCE BETWEEN THE BEAMS IS TO BE INCREASED FROM 300mm TO 400mm. THUS ITEM B27A-SF/24 REPLACES ITEM B27-SF/24. ITEM B29A-SF/25 REPLACES ITEM B29-SF/25.
5. FOR ALTERNATIVE POSTS, FOUNDATIONS & FIXINGS SEE MRBB-GA-41 AND MEGARAIL MANUAL & GA/21
6. FOR DETAIL 'M' AND FURTHER CONSTRUCTION NOTES SEE DRAWINGS MRBB-GA-43 & 47
7. THE POSTS IN THE TERMINAL SECTION ARE TO BE SET TO THE LEVELS SHOWN AND THE ANCHORAGE IS TO BE CAST WHILE THE BEAMS ARE ONLY LOOSELY BOLTED TO THE FISH PLATES. WHEN THE CONCRETE HAS REACHED ITS DESIRED STRENGTH, THE FISH PLATE BOLTS ARE TO BE TIGHTENED AS PER SF/00.
8. CONCRETE FAIRING AND FOUNDATIONS TO BE MIX C25 OR ST5
9. SET BEAM CENTRE LINE HEIGHT FROM REFERENCE LEVEL OR ADJACENT GROUND AS SHOWN AT DETAIL 'W' - GA/20.
10. THESE DIMENSIONS MAY NEED TO BE ADJUSTED WHEN MEASURED RELATIVE TO THE CARRIAGEWAY/HARDSHOULDER/HARDSTRIP TO ENSURE THE TOP OF THE FOUNDATIONS REMAIN 20mm-25mm ABOVE THE GENERAL ADJACENT GROUND LEVEL
11. WHERE CONCRETE FOUNDATIONS WITH SOCKETS ARE SPECIFIED AND ADJACENT GROUND LEVEL IS ABOVE/BELOW THE REFERENCE LEVEL IT WILL BE NECESSARY TO SELECT THE MOST APPROPRIATE LENGTH SOCKET FROM THE RANGE SHOWN ON DRAWING MRBB-GA-00 TO ENSURE THE TOP OF THE FOUNDATIONS REMAIN 20mm-25mm ABOVE ADJACENT GROUND LEVEL. THE POST EMBEDMENT DEPTHS, SOCKET DIMENSIONS AND BALLOON IDENTIFICATIONS SHOWN ASSUME THE REFERENCE LEVEL AND ADJACENT GROUND LEVEL COINCIDE,
12. THIS DRAWING TO BE READ IN CONJUNCTION WITH DRAWINGS MRBB-GA-43,44,45 & 47

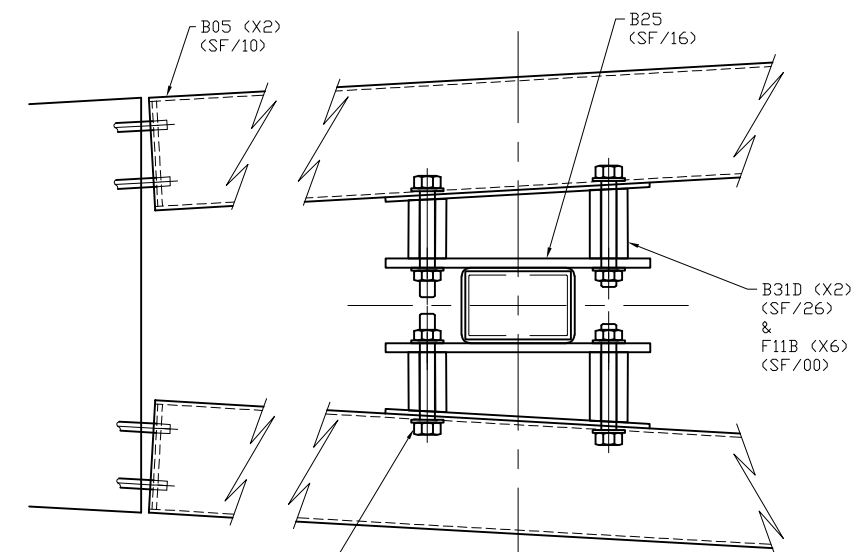
| | | | |
|---|----------|-----------------|---------|
| | | | |
| | | | |
| | | | |
| | | | |
| 00 | 08/09/25 | DRAWING CREATED | H.B |
| REVn | DATE | DETAILS | INITIAL |
| MEGARAIL BB / NPSBS OBB | | | |
| NPSBS DSOBB & DSMRBB ENCLOSING LIGHT COLUMNS (50MPH) | | | |
| SAFEROAD | | | |
| CONCORD HOUSE, BESSEMER WAY, SCUNTHORPE, NORTH LINCOLNSHIRE, DN15 8XE T: 01724 289119 FOR TECHNICAL ASSISTANCE CONTACT john.cudlipp@saferoad.co.uk | | | |
| DRAWING NUMBER: | | | REVn: |
| MRBB-GA-46 | | | 00 |



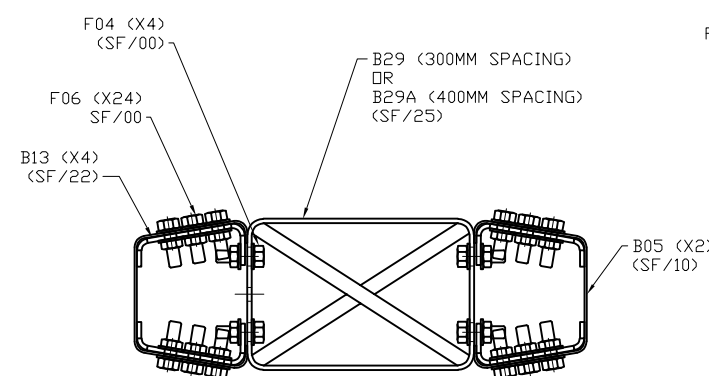
PLAN VIEW ON ANCHORAGE
(SEE NOTE 4)



SECTION K-K
300MM CLEARANCE



SECTION K-K
400MM CLEARANCE

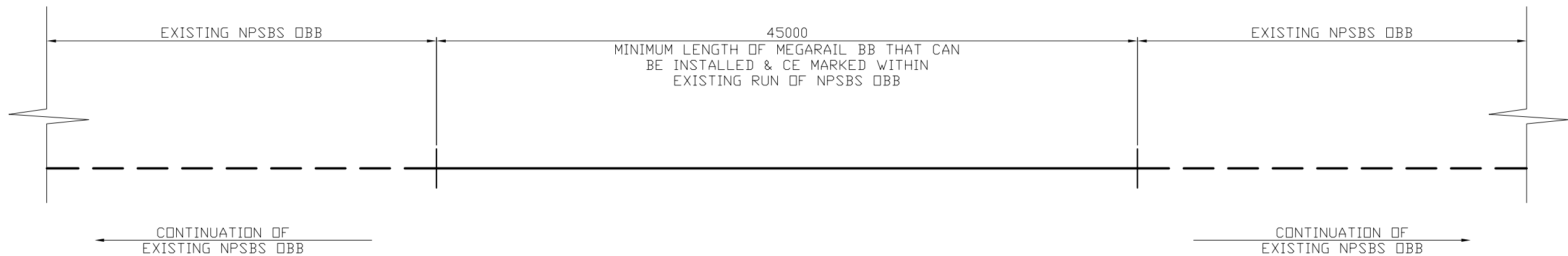


SECTION Y-Y

GENERAL NOTES:

- THIS TYPE OF SAFETY FENCE MUST NOT BE USED TO ENCLOSE LIGHTING COLUMNS WHERE THE SPEED LIMIT EXCEEDS 50mph
- DIMENSIONS ARE IN MILLIMETRES UNLESS OTHERWISE STATED
- TRAFFIC FACE OF FAIRING MUST NOT BE BEHIND TRAFFIC FACE OF BEAM AT APPROACH END OF SAFETY FENCE AND MUST NOT PROTRUDE IN FRONT OF TRAFFIC FACE AT DEPARTURE END
- CONCRETE FAIRING AND FOUNDATIONS TO BE MIX C25 OR ST5
- DIMENSION '290' TO BE MEASURED FROM REFERENCE LEVEL OR ADJACENT GROUND LEVEL AS SHOWN AT DETAIL 'W' ON DRAWING GA/20. DIMENSION MAY NEED TO BE ADJUSTED TO ENSURE TOP OF THE FOUNDATION REMAINS 50MM ABOVE THE GENERAL ADJACENT GROUND LEVEL .
- END POST IS TO BE MOUNTED IN SOCKET AS SHOWN. HOWEVER, WHERE THE ADJACENT GROUND LEVEL IS ABOVE OR BELOW THE REFERENCE LEVEL, AN APPROPRIATE LENGTH SOCKET WILL BE REQUIRED TO ENSURE THE TOP OF THE SOCKET AND THE FOUNDATION FLAUNCHING REMAIN 50-60MM ABOVE THE ADJACENT GROUND LEVEL. SOCKET IDENTIFICATION SHOWN ASSUMES THE REFERENCE LEVEL AND THE ADJACENT GROUND LEVEL ARE THE SAME
- THIS DRAWING TO BE READ IN CONJUNCTION WITH MRBB-GA-43,44,45 & 46

| | | | |
|---|----------|-----------------|---------|
| | | | |
| | | | |
| | | | |
| | | | |
| 00 | 08/09/25 | DRAWING CREATED | H.B |
| REVn | DATE | DETAILS | INITIAL |
| MEGARAIL BB / NPSBS OBB | | | |
| NPSBS DSOBB & DSMRBB ENCLOSING LIGHT COLUMNS (50MPH) | | | |
| | | | |
| CONCORD HOUSE, BESSEMER WAY, SCUNTHORPE, NORTH LINCOLNSHIRE, DN15 8XE T: 01724 289119 FOR TECHNICAL ASSISTANCE CONTACT john.cudlipp@saferoad.co.uk | | | |
| DRAWING NUMBER: | | | REVn: |
| MRBB-GA-47 | | | 00 |



- NPSBS OBB REMAINS A COMPLIANT LEGACY NPSBS SYSTEM WITH MEGARAIL BB COMPONENTS INSTALLED.
- WHEN INSTALLING, MAINTAINING OR REPAIRING MEGARAIL BB, ONLY MEGARAIL BB COMPONENTS MAY BE USED, ENSURING COMPLIANCE WITH THE CE MARKED SYSTEM.
- THE MINIMUM LENGTH OF NEED FOR MEGARAIL BB AS A STAND ALONE CE MARKED SYSTEM IS 20M, EXCLUDING TERMINALS.
- THE MINIMUM LENGTH OF MEGARAIL BB THAT CAN BE INSTALLED & CE MARKED WITHIN AN EXISTING NPSBS OBB FENCE IS 45M.
- MEGARAIL BB COMPONENTS USED WITHIN A NPSBS OBB SYSTEM CONTAINING SPACERS & STIFFENERS CANNOT BE CE MARKED AT ANY LENGTH, THEREFOR MUST BE INSTALLED IN ACCORDANCE WITH NPSBS.
- MEGARAIL BB COMPONENTS USED WITHIN NPSBS DOUBLE SIDED OBB CANNOT BE CE MARKED, THEREFOR MUST BE INSTALLED IN ACCORDANCE WITH NPSBS.
- MEGARAIL BB COMPONENTS USED WITHIN NPSBS DROBB CANNOT BE CE MARKED, THEREFOR MUST BE INSTALLED IN ACCORDANCE WITH NPSBS
- MEGARAIL BB COMPONENTS USED WITHIN NPSBS GA72 & GA74 TRANSITIONS TO LEGACY SYSTEMS OR STRUCTURES CANNOT BE CE MARKED, THEREFOR MUST BE INSTALLED IN ACCORDANCE WITH NPSBS.
- WHEN USING MEGARAIL BB COMPONENTS FOR REPAIR OR RENEWAL, THE INSTALLATION SHOULD COMPLY WITH SAFEROAD DRAWINGS MRBB-GA-41 TO MRBB-GA-51, NPSBS DRAWINGS AND TO BS 7669.
- WHEN CONNECTING TO ANY PROPRIETARY SYSTEM WITH A NPSBS GA72 OR GA74 TRANSITION, MEGARAIL BB COMPONENTS CANNOT BE USED

| | | | |
|---|----------|-----------------|---------|
| | | | |
| | | | |
| | | | |
| | | | |
| 00 | 10/12/25 | DRAWING CREATED | H.B |
| REVn | DATE | DETAILS | INITIAL |
| MEGARAIL BB/NPSBS OBB | | | |
| COMPLIANCE REQUIREMENTS WITHIN REPAIRS & RENEWAL | | | |
| <div><div></div><div>SAFEROAD</div></div> | | | |
| CONCORD HOUSE, BESSEMER WAY, SCUNTHORPE, NORTH LINCOLNSHIRE, DN15 8XE T: 01724 289119 FOR TECHNICAL ASSISTANCE CONTACT john.cudlipp@saferoad.co.uk | | | |
| DRAWING NUMBER: | | | REVn: |
| MRBB-GA-48 | | | 00 |