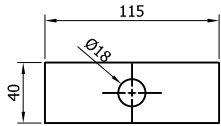
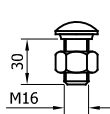


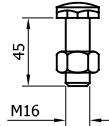
SR014 - TRI-WAVE BEAM 2.5mm THK



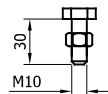
SR151 - WASHER PLATE
115 x 40 x 6 DIA.18



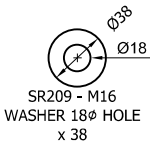
SR207 - M16x30
SETSCREW HRK
SHOULDER c/w NUT



SR201 - M16x45
SETSCREW c/w NUT



SR205 - M10x30
SETSCREW c/w NUT



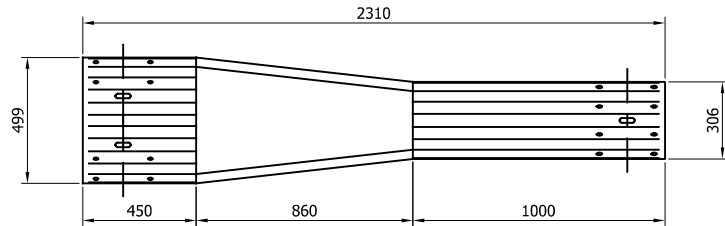
SR209 - M16
WASHER 18ø HOLE
x 38



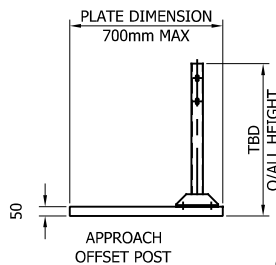
SR300 - M16
WASHER 18ø HOLE



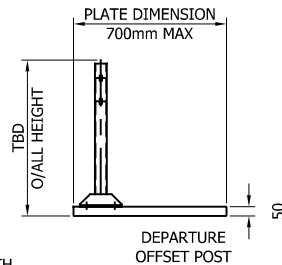
SR301 - M10
WASHER 11ø HOLE



SR218 - UNIVERSAL CONNECTION FOR BOTH APPROACH & DEPARTURE
TRI-WAVE TO A PROFILE CONNECTION

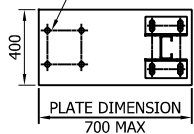


APPROACH
OFFSET POST

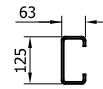
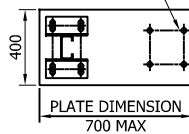


DEPARTURE
OFFSET POST

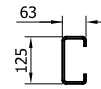
CAN BE FIXED WITH
CAST IN ANCHORS, DRILL
AND FIX ANCHORS OR
PUSHED IN ANCHORS
AT 180x180 CENTERS



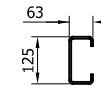
*BASEPLATE DRILL
& TAPPED FOR
LIFTING EYE



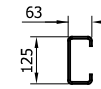
SR241 - C125 POST
2400mm



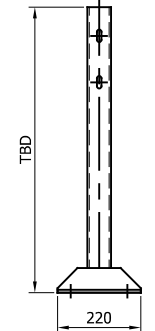
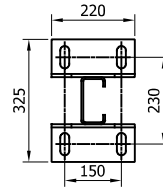
SR225 - C125 POST
2000mm



SR240 - C125 POST
1250mm

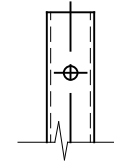
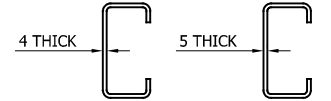


SR214 - C125 POST
1600mm

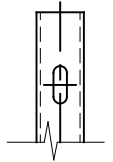


SR485 - SURFACE
MOUNTED C125 POST

POST TYPE IDENTIFICATION



✗
TYPE 'A'



✓
TYPE 'C'

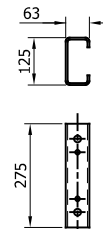
| REVn | DATE | DETAILS | INITIAL |
|------|----------|--------------------------------------|---------|
| 08 | 23/07/24 | DRAWING UPDATED | H.B |
| 07 | 27.06.22 | TRI WAVE BEAM NOTES CHANGED | A.D |
| 06 | 13/05/22 | SURFACE MOUNTED POST BASE CHANGED | A.D |
| 05 | 23/07/21 | NOTE CHANGE | A.D |
| 04 | 27/05/21 | DETAILS REVISED | M.T |
| 03 | 12/02/19 | DETAILS REVISED | M.T |
| 02 | 17/01/18 | POST LENGTH REVISED TO 1250 LONG | H.B |
| 01 | 28/03/17 | POST TYPE REVISED | L.L |
| 00 | 14/03/17 | DRAWING CREATED | L.L |

SafeStar 231 H2 W3 VI 3 COMPONENT DETAILS



CONCORD HOUSE,
BESSEMER WAY, SCUNTHORPE,
NORTH LINCOLNSHIRE, DN15 8XE
t: 01724 289119
FOR TECHNICAL ASSISTANCE CONTACT
john.cudlipp@saferoad.co.uk

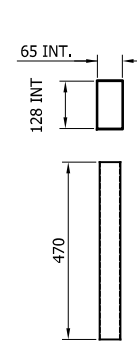
| DRAWING NUMBER: | REVn: |
|-----------------|-------|
| H2W3-GA-00 | 08 |



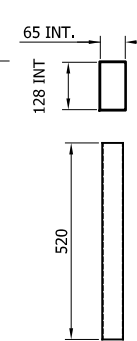
SR212 - C125
SPACER
X 275



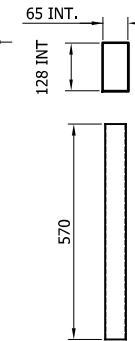
SR100 - A21
REINFORCING
RING



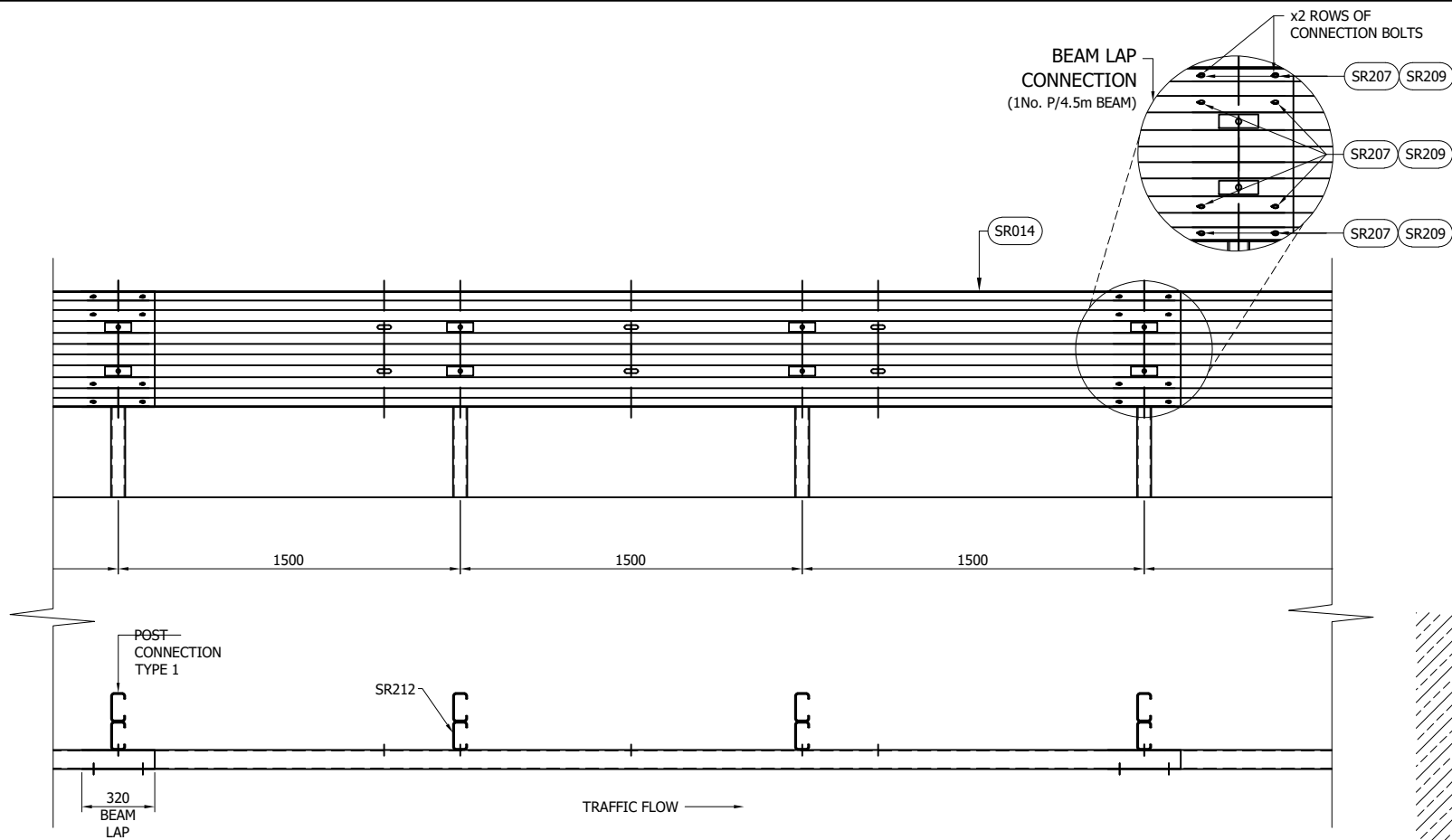
SR080 - C125
POST SOCKET
x 470



SR081 - C125
POST SOCKET
x 520



SR082 - C125
POST SOCKET
x 570



GENERAL NOTES:

1. POSTS ARE TO BE INSTALLED WITH THE CLOSED FACE OF THE CHANNEL TOWARDS THE ON-COMING TRAFFIC.
2. FOR OPTIONS ON POST FOUNDATIONS REFER TO DRAWING NUMBER MR-GA-020
3. FOR DEVIATIONS IN SYSTEM POST PITCH REFER TO DRAWING H2W3-GA-40.
4. WHEN TYING INTO ADJACENT VRS ONLY ONE WORKING WIDTH DIFFERENCE IS PERMITTED. SEE SYSTEM PROGRESSION DETAILS.
5. SEE MR-GA-001 & MR-GA-003 FOR DETAILS OF SYSTEM HEIGHTS WITH REFERENCE TO SETBACK & KERB HEIGHTS.
6. FOR MINIMUM LENGTH OF FULL HEIGHT VRS REFER TO SAFEROAD MEGARAIL MANUAL.

| SAFEROAD UK PART NUMBER | DESCRIPTION | QUANTITY |
|---|---------------------|----------|
| SR014 | TRI-WAVE BEAM | 1 |
| SR212 | C125 SPACER BRACKET | 3 |
| SEE TABLE 'B' | C125 POST | 3 |
| FOR SCHEDULE OF BOLTED CONNECTIONS REFER TO DRAWING NUMBER H2W3-GA-02 | | |

| SAFEROAD UK PART NUMBER | POST LENGTH |
|-------------------------|----------------------|
| SR240 | 1250 |
| SR214 | 1600 |
| SR225 | 2000 |
| SR241 | 2400 |
| SR485 | SURFACE MOUNTED POST |

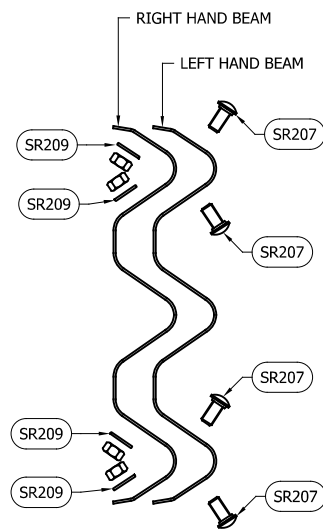
SafeStar 231
H2 W3 VI 3
 GENERAL ARRANGEMENT & SETTING
 OUT DETAILS



CONCORD HOUSE,
 BESSEMER WAY, SCUNTHORPE,
 NORTH LINCOLNSHIRE, DN15 8XE
 t: 01724 289119
 FOR TECHNICAL ASSISTANCE CONTACT
 john.cudlipp@saferoad.co.uk

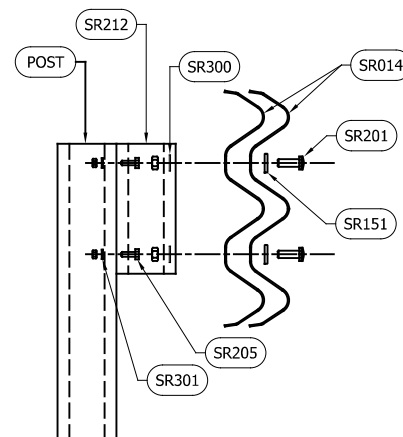
| | | | |
|------|----------|-------------------------|---------|
| 06 | 23/07/24 | DRAWING UPDATED | H.B |
| 05 | 15/02/23 | NOTE REMOVED | A.D |
| 04 | 18/11/22 | NOTE REMOVED | A.D |
| 03 | 16/08/21 | TABLE 'A' REVISED | A.D |
| 02 | 12/02/19 | TITLEBLOCK REVISED | M.T |
| 01 | 28/03/17 | BEAM DETAIL AND DIM REV | L.L |
| 00 | 14/03/17 | DRAWING CREATED | L.L |
| REVn | DATE | DETAILS | INITIAL |

| | |
|-------------------|-----------|
| DRAWING NUMBER: | REVn: |
| H2W3-GA-01 | 06 |



**BEAM LAP CONNECTION
DETAILS**
(1No. LOCATION P/BEAM END)

| BEAM LAP FIXINGS | | |
|-------------------------|--------------------------------------|----------|
| SAFEROAD UK PART NUMBER | DESCRIPTION | QUANTITY |
| SR207 | M16x30 SETSCREW HRK SHOULDER c/w NUT | 8 (+8) |
| SR209 | M16 WASHER 18Ø HOLE x 38 | 8 (+8) |



**POST TO BEAM
CONNECTION DETAILS**
(PER POST)

| POST TO BEAM FIXINGS | | |
|-------------------------|-----------------------------------|----------|
| SAFEROAD UK PART NUMBER | DESCRIPTION | QUANTITY |
| SR201 | M16x45 SETSCREW c/w NUT | 2 |
| SR151 | WASHER PLATE 115 x 40 x 6 DIA. 18 | 2 |
| SR300 | M16 WASHER 18Ø HOLE | 2 |
| SR205 | M10x30 SETSCREW c/w NUT | 2 |
| SR301 | M10 WASHER 11Ø HOLE | 2 |

- GENERAL NOTES:
- NUMBERS IN THE SCHEDULES SUFFIXED (+) DENOTES THE ADDITIONAL QUANTITY OF COMPONENTS REQUIRED FOR EXTREME ENDS OF INDIVIDUAL RUNS OF BARRIER.

| REVn | DATE | DETAILS | INITIAL |
|------|----------|--|---------|
| 03 | 23/07/24 | DRAWING UPDATED | H.B |
| 02 | 16/08/21 | BEAM LENGTH NOTE CHANGED FROM 4m TO 4.5m | A.D |
| 01 | 12/02/19 | TITLEBLOCK REVISED | M.T |
| 00 | 14/03/17 | DRAWING CREATED | L.L |

SafeStar 231
H2 W3 VI 3
FIXINGS SCHEMATIC



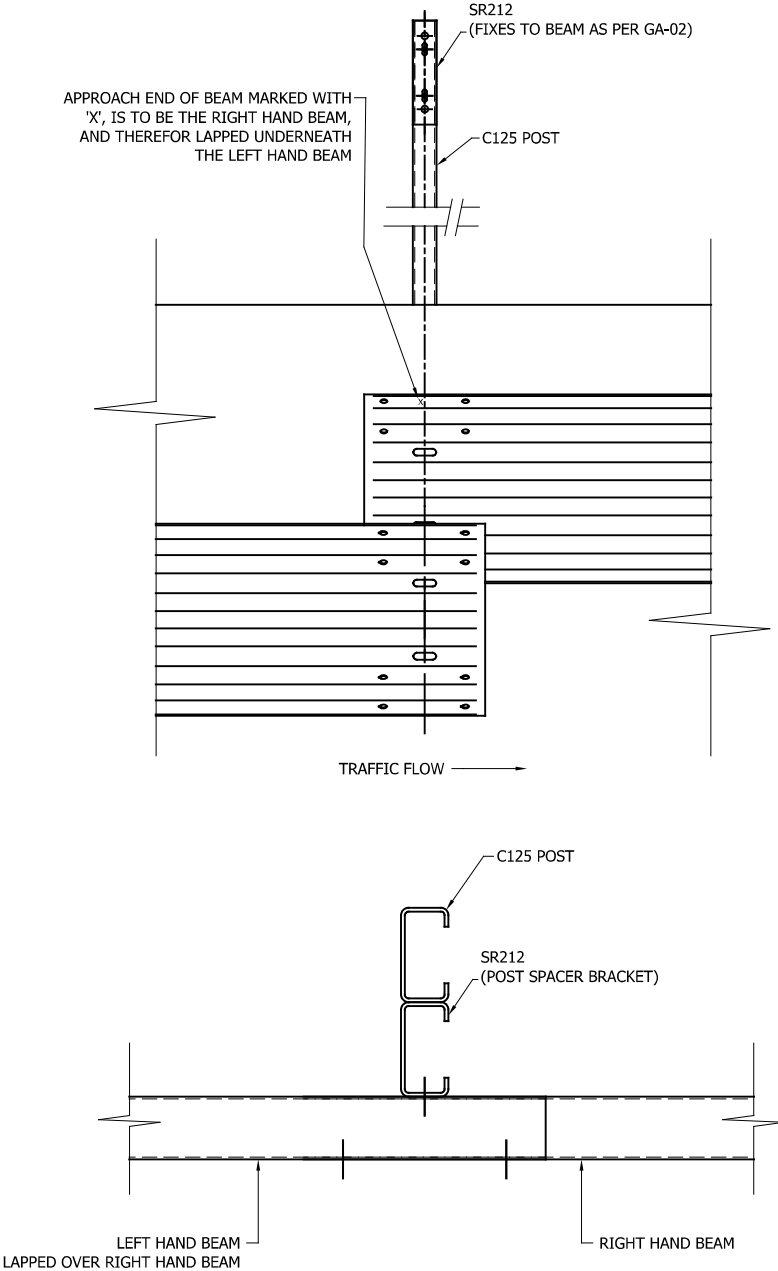
CONCORD HOUSE,
BESSEMER WAY, SCUNTHORPE,
NORTH LINCOLNSHIRE, DN15 8XE
t: 01724 289119
FOR TECHNICAL ASSISTANCE CONTACT
john.cudlipp@saferoad.co.uk

| | |
|-----------------|-------|
| DRAWING NUMBER: | REVn: |
| H2W3-GA-02 | 03 |

** BEAM REFERENCES i.e. LEFT / RIGHT HAND ARE FOR VERGE INSTALLATIONS; FOR CENTRAL RESERVATION INSTALLATIONS THE REFERENCES ARE REVERSED

GENERAL NOTES:

1. POSTS ARE TO BE INSTALLED WITH THE CLOSED FACE OF THE CHANNEL TOWARDS THE ON-COMING TRAFFIC.



| REVn | DATE | DETAILS | INITIAL |
|------|----------|--------------------|---------|
| 03 | 23/07/24 | DRAWING UPDATED | H.B |
| 02 | 27/06/22 | NOTES CHANGED | A.D |
| 01 | 12/02/19 | TITLEBLOCK REVISED | M.T |
| 00 | 14/03/17 | DRAWING CREATED | L.L |

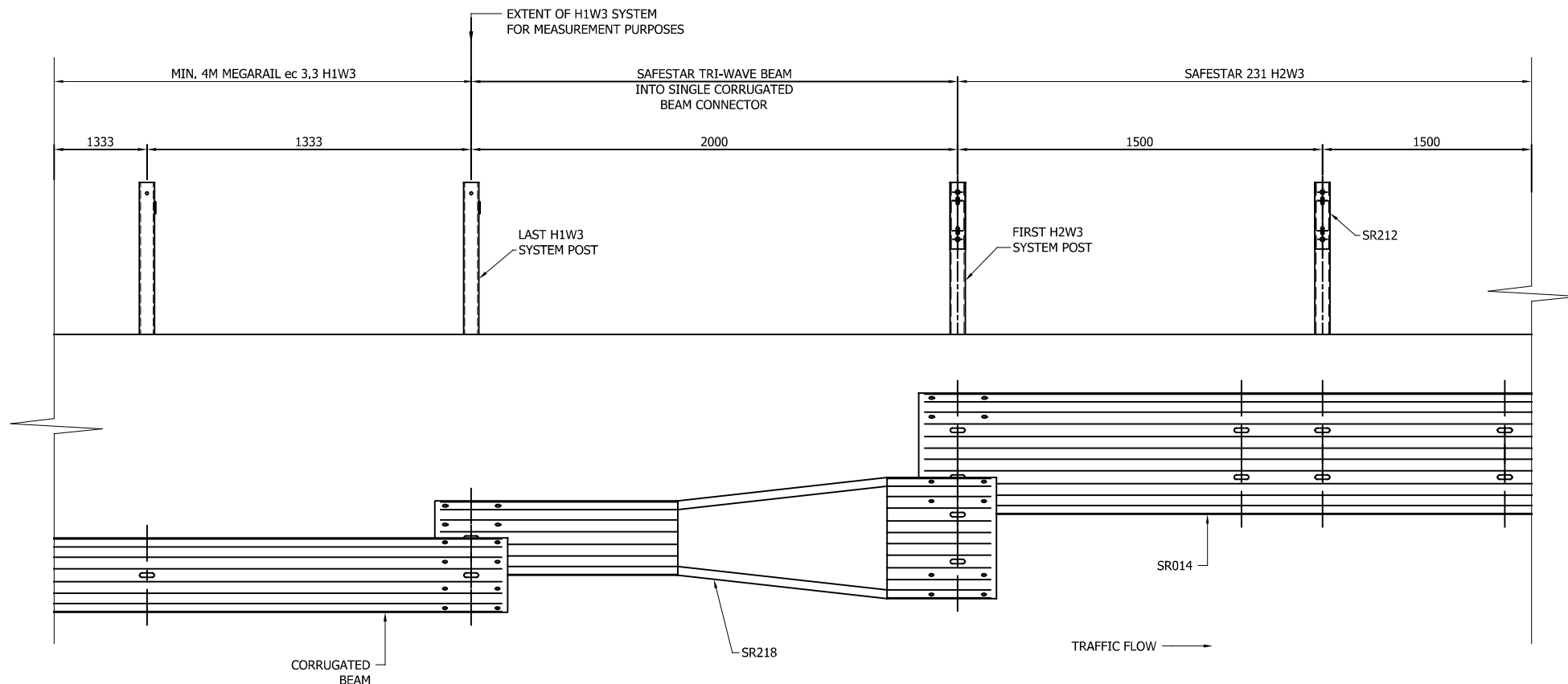
SafeStar 231
H2 W3 VI 3
BEAM LAPPING DETAILS



CONCORD HOUSE,
BESSEMER WAY, SCUNTHORPE,
NORTH LINCOLNSHIRE, DN15 8XE
t: 01724 289119
FOR TECHNICAL ASSISTANCE CONTACT
john.cudlipp@saferoad.co.uk

| | |
|-----------------|-------|
| DRAWING NUMBER: | REVn: |
| H2W3-GA-03 | 03 |

** BEAM REFERENCES i.e. LEFT / RIGHT HAND ARE FOR VERGE INSTALLATIONS; FOR CENTRAL RESERVATION INSTALLATIONS THE REFERENCES ARE REVERSED



GENERAL NOTES:

1. POSTS ARE TO BE INSTALLED WITH THE CLOSED FACE OF THE CHANNEL TOWARDS THE ON-COMING TRAFFIC.

** BEAM REFERENCES i.e. LEFT / RIGHT HAND ARE FOR VERGE INSTALLATIONS; FOR CENTRAL RESERVATION INSTALLATIONS THE REFERENCES ARE REVERSED

SafeStar 231 **H2 W3 VI 3** W3 SYSTEM PROGRESSION DETAILS

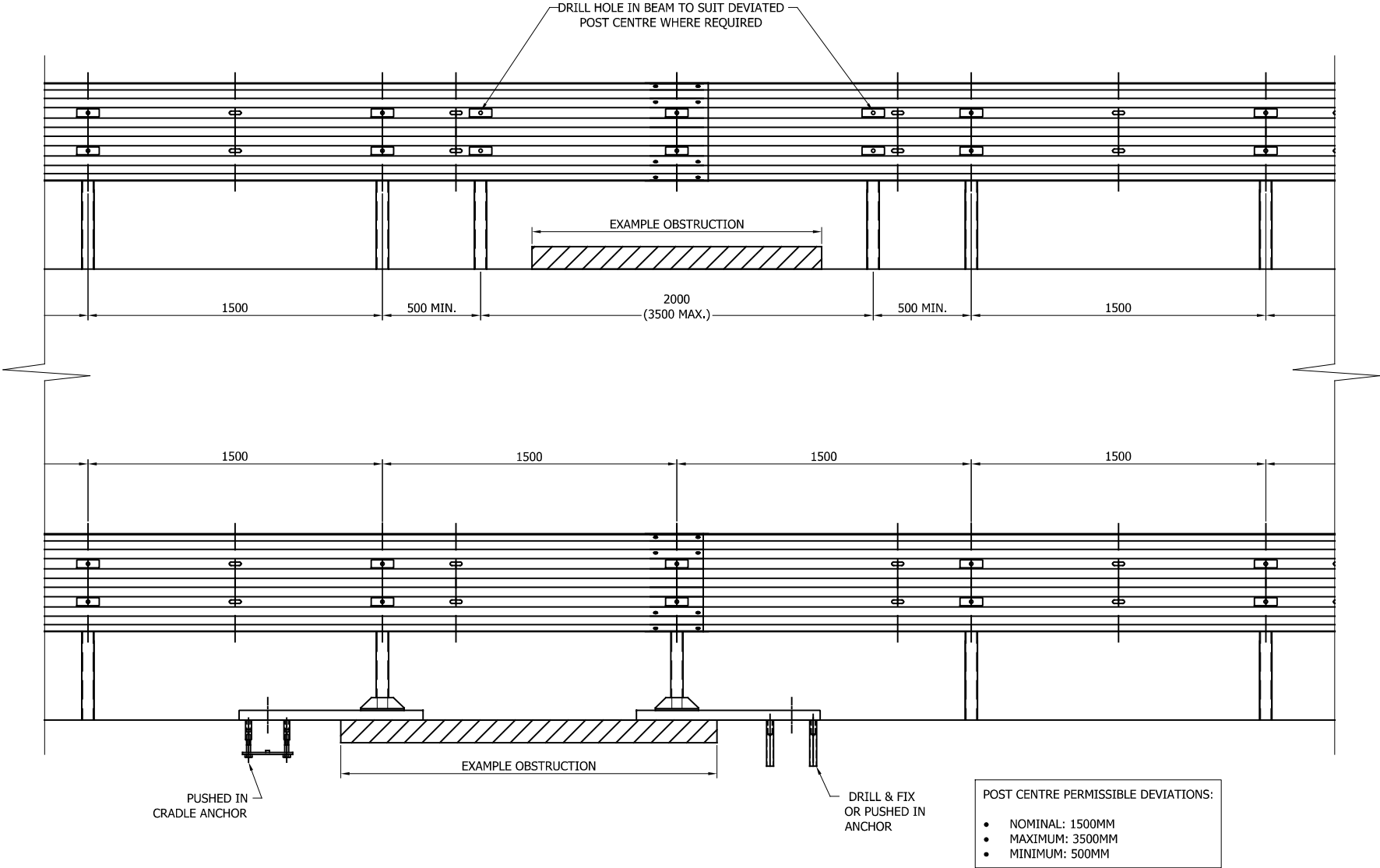


CONCORD HOUSE,
BESSEMER WAY, SCUNTHORPE,
NORTH LINCOLNSHIRE, DN15 8XE
t: 01724 289119
FOR TECHNICAL ASSISTANCE CONTACT
john.cudlipp@saferoad.co.uk

| | | | |
|------|----------|--------------------|---------|
| 04 | 23/07/24 | DRAWING UPDATED | H.B |
| 03 | 27/06/22 | NOTES REMOVED | A.D |
| 02 | 08/10/21 | DETAILS REVISED | A.D |
| 01 | 12/02/19 | TITLEBLOCK REVISED | M.T |
| 00 | 14/03/17 | DRAWING CREATED | L.L |
| REVn | DATE | DETAILS | INITIAL |

| | |
|-----------------|-------|
| DRAWING NUMBER: | REVn: |
| H2W3-GA-20 | 04 |

- GENERAL NOTES:
1. IF THE SITE CONDITIONS DO NOT ALLOW A POST TO BE INSTALLED ON THE SYSTEM PITCH DEVIATIONS CAN BE APPLIED. THE OBSTRUCTED POST CAN BE LEFT OUT AND EXTRA POSTS INSTALLED TO SPAN THE OBSTRUCTION AS PER THIS DRAWING. ALTHOUGH IT WOULD BE BENEFICIAL TO USE THE HOLES ALREADY IN THE BEAM IT IS ACCEPTABLE TO DRILL NEW HOLES IN THE DESIRED POSITIONS AND TREAT WITH ZINC RICH PAINT.
 2. OFFSET POSTS SHOWN ON DRAWING H2W3-GA-00 CAN BE USED.



| | | | |
|------|----------|---------------------------------------|---------|
| 04 | 23/07/24 | DRAWING UPDATED | H.B |
| 03 | 13/05/22 | SURFACE MOUNTED POST BASE CHANGED | A.D |
| 02 | 23/07/21 | SURFACE MOUNTED POST DETAILS ADDED | A.D |
| 01 | 12/02/17 | DETAILS REVISED | M.T |
| 00 | 14/03/17 | DRAWING CREATED | L.L |
| REVn | DATE | DETAILS | INITIAL |

SafeStar 231
H2 W3 VI 3
PERMISSIBLE DEVIATION SETTING
OUT DETAILS

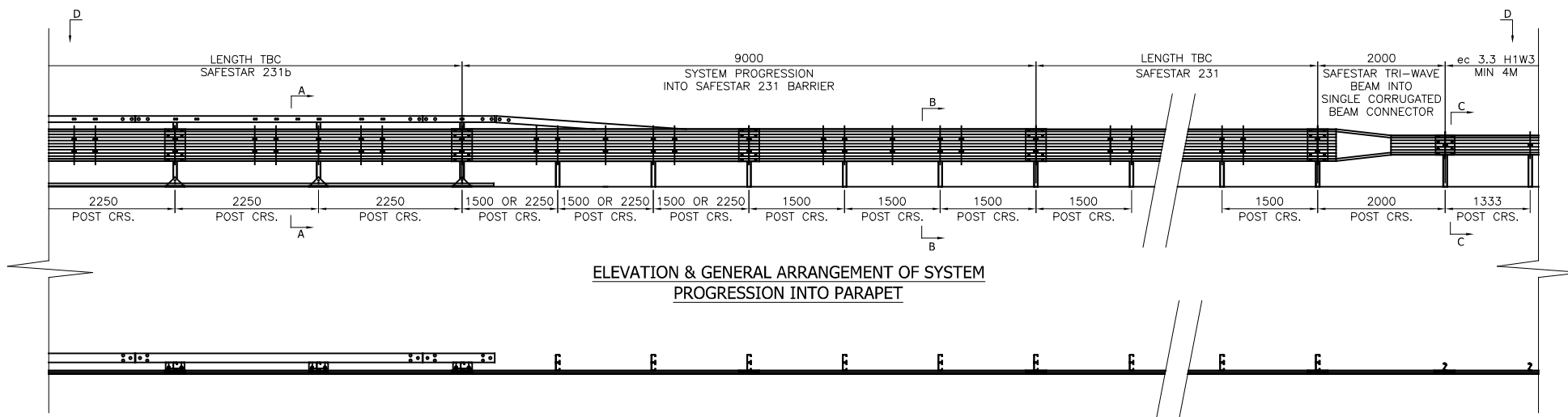


CONCORD HOUSE,
BESSEMER WAY, SCUNTHORPE,
NORTH LINCOLNSHIRE, DN15 8XE
t: 01724 289119
FOR TECHNICAL ASSISTANCE CONTACT
john.cudlipp@saferoad.co.uk

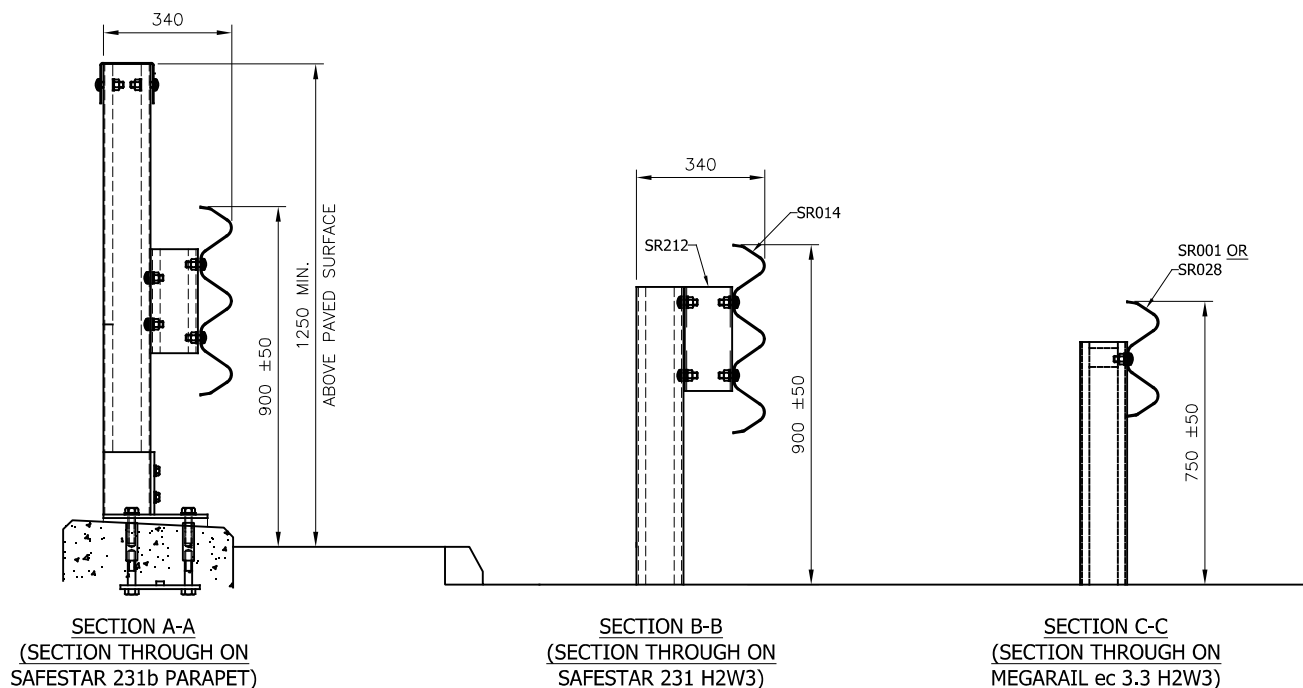
| | |
|-----------------|-------|
| DRAWING NUMBER: | REVn: |
| H2W3-GA-40 | 04 |

GENERAL NOTES:

1. POSTS ARE TO BE INSTALLED WITH THE CLOSED FACE OF THE CHANNEL TOWARDS THE ON-COMING TRAFFIC.
2. FOR FURTHER DETAILS OF SYSTEM PROGRESSION SEE, H2W3-GA-20 & MEGARAIL MANUAL



SECTION D-D
(PLAN VIEW ON SYSTEM PROGRESSION)



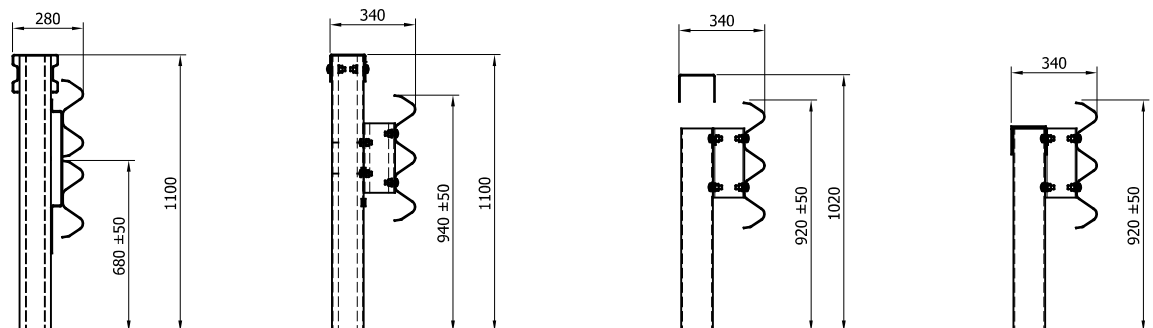
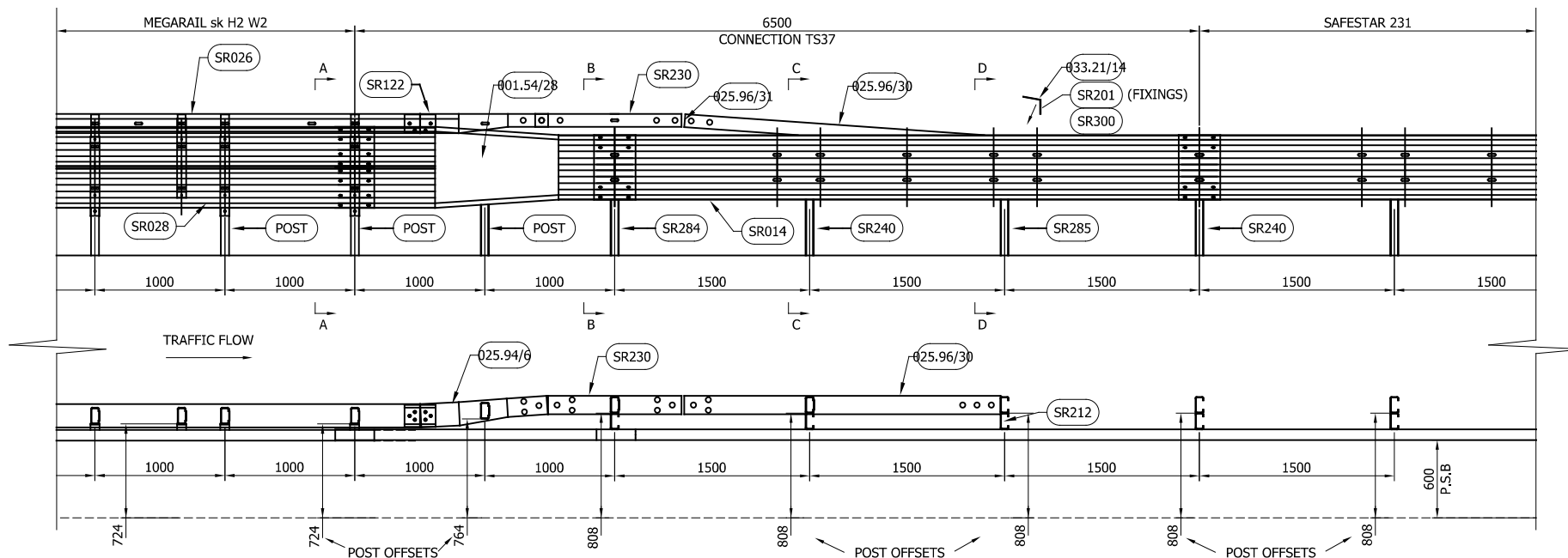
SafeStar 231
H2 W3 VI 3
SYSTEM PROGRESSION INTO
SAFESTAR 231b PARAPET



CONCORD HOUSE,
BESSEMER WAY, SCUNTHORPE,
NORTH LINCOLNSHIRE, DN15 8XE
t: 01724 289119
FOR TECHNICAL ASSISTANCE CONTACT
john.cudlipp@saferoad.co.uk

| | | | |
|------|----------|----------------------------|---------|
| 05 | 23/07/24 | DRAWING UPDATED | H.B |
| 04 | 14/04/23 | TRANSITION DETAILS UPDATED | H.B |
| 03 | 12/02/19 | TITLEBLOCK REVISED | M.T |
| 02 | 20/04/17 | MESH RAIL REMOVED | L.L |
| 01 | 28/03/17 | DETAILS REVISED | L.L |
| 00 | 14/03/17 | DRAWING CREATED | L.L |
| REVn | DATE | DETAILS | INITIAL |

| | |
|-----------------|-------|
| DRAWING NUMBER: | REVn: |
| H2W3-GA-50 | 05 |



SECTION A-A

SECTION B-B

SECTION C-C

SECTION D-D

POST LENGTHS DETAILED WITHIN GA & TABLE ARE
EXAMPLES OF LENGTHS AVAILABLE. LENGTH/FOUNDATION
VARIATIONS ARE AVAILABLE AS SHOWN ON GA-00, AS
REQUIRED VIA SOIL TESTING PROCEDURE

| TABLE 'A' - TRANSITION COMPONENT SCHEDULE - QTY'S 1 No. DEPARTURE TRANSITION | | |
|---|---|----------|
| SAFEROAD PART NUMBER | DESCRIPTION | QUANTITY |
| 001.54/27 | sk TO TRI-WAVE BEAM APPROACH | 0 |
| 001.54/28 | sk TO TRI-WAVE BEAM DEPARTURE | 1 |
| 025.94/6 | sk TO SAFESTAR TRANSITION TOP RAIL | 1 |
| SR230 | SAFESTAR TOP RAIL 1100 | 1 |
| 025.96/30 | LOWERING END TOP RAIL | 1 |
| SR212 | SAFESTAR SPACER 275 | 4 |
| SR028 | sk BEAM "A" PROFILE | 2 |
| SR014 | TRI-WAVE BEAM | 1 |
| 033.21/14 | ATTACHMENT ANGLE | 1 |
| SK POST | SEE MEGARAIL SK GA-00 FOR POST LENGTHS | 3 |
| SR284 | 'C' POST 125 x 1600 LONG cw CONN. | 1 |
| SR240 | 'C' POST 125 x 1250 LONG SAFESTAR | 2 |
| SR285 | 'C' POST 125 x 1250 LONG SAFESTAR w CONN. | 1 |
| FOR SCHEDULE OF BOLTED CONNECTIONS REFER TO DRAWING NUMBER H2W3-GA-02 & MEGARAIL sk GA H2W2-GA-02 | | |

| | | | |
|------|----------|-----------------------------------|---------|
| 07 | 23/07/24 | DRAWING UPDATED | H.B |
| 06 | 11/03/24 | NOTE REGARDING POST LENGTHS ADDED | H.B |
| 05 | 03.08.23 | DETAILS UPDATED | H.B |
| 04 | 11.01.23 | TOP RAIL JOINT CODE CHANGED | A.D |
| 03 | 08.12.21 | PLAN VIEW ALTERED | A.D |
| 02 | 25.05.21 | DETAILS REVISED | M.T |
| 01 | 12.02.19 | TITLEBLOCK REVISED | M.T |
| REVn | DATE | DETAILS | INITIAL |

SafeStar 231
H2 W3 VI 3
DETAILS OF CONNECTION INTO
H2W2 MEGARAIL SK



CONCORD HOUSE,
BESSEMER WAY, SCUNTHORPE,
NORTH LINCOLNSHIRE, DN15 8XE
t: 01724 289119
FOR TECHNICAL ASSISTANCE CONTACT
john.cudlipp@saferoad.co.uk

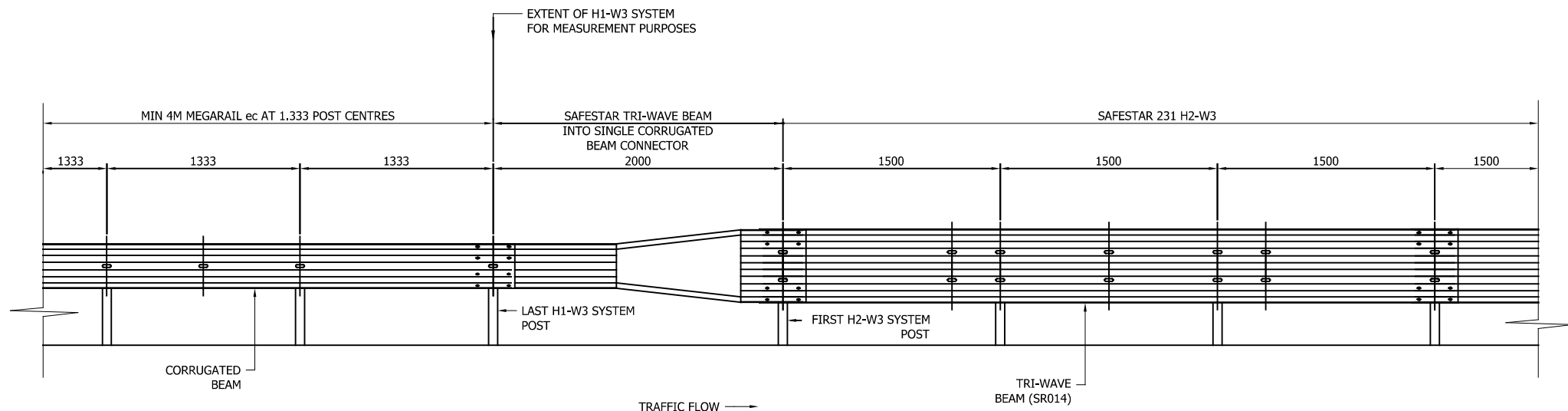
| | |
|-----------------|-------|
| DRAWING NUMBER: | REVn: |
|-----------------|-------|

H2W3-GA-51

07

GENERAL NOTES:

- TO BE READ IN CONJUNCTION WITH DRG.
Nos. H2W3-GA-00, H2W3-GA-01 &
H2W3-GA-02.
- DEPARTURE CONNECTION SHOWN, APPROACH
SIMILAR BUT HANDED. CODES AS SHOWN.



SafeStar 231 H2 W3 VI 3

SYTSEM PROGRESSION FOR W3
PROTECTION TO HAZARD



CONCORD HOUSE,
BESSEMER WAY, SCUNTHORPE,
NORTH LINCOLNSHIRE, DN15 8XE
t: 01724 289119
FOR TECHNICAL ASSISTANCE CONTACT
john.cudlipp@saferoad.co.uk

GENERAL NOTES:

1. POSTS ARE TO BE INSTALLED WITH THE CLOSED FACE OF THE CHANNEL TOWARDS THE ON-COMING TRAFFIC.

** BEAM REFERENCES i.e. LEFT / RIGHT HAND ARE FOR VERGE INSTALLATIONS; FOR CENTRAL RESERVATION INSTALLATIONS THE REFERENCES ARE REVERSED

| | | | |
|------|----------|-----------------|---------|
| | | | |
| | | | |
| | | | |
| 01 | 23/07/24 | DRAWING UPDATED | H.B |
| 00 | 14/11/23 | DRAWING CREATED | H.B |
| REVn | DATE | DETAILS | INITIAL |

| | |
|-----------------|-------|
| DRAWING NUMBER: | REVn: |
| H2W3-GA-52 | 01 |