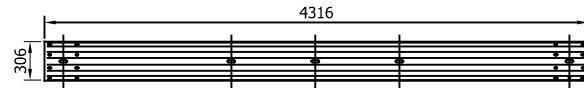




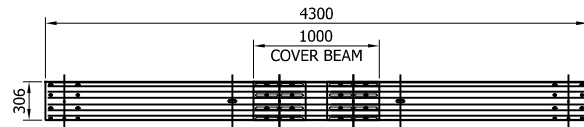
SR000 - "A" PROFILE BEAM 4.3m x
2.5mm THK



SR700 - VIK "A" PROFILE BEAM 3mm THK
4316mm LONG BEAM



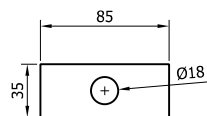
VIK "A" PROFILE BEAM 3mm THK
2316mm LONG BEAM



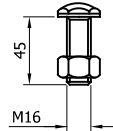
SR023 - EXPANSION 'A' PROFILE BEAM 3MM THK

2.5MM THICK OR 3MM THICK BEAM
MAY BE USED, FIXINGS USED MUST BE
ACCORDING TO BEAM TYPE

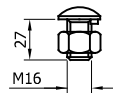
EXPANSION BEAMS ARE DELIVERED FACTORY ASSEMBLED.
IF CIRCUMSTANCES DICTATE ON SITE ASSEMBLY PLEASE
FOLLOW THE FOLLOWING GUIDANCE:
INSIDE NUT TIGHTENED TO 15Nm OUTSIDE LOCKING NUT
TIGHTENED TO 70Nm.
NOTE: IT IS VERY IMPORTANT TO HOLD INSIDE NUT WITH
A SPANNER WHEN APPLYING THE TORQUE WRENCH TO
THE OUTSIDE NUT.



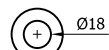
SR155 - WASHER PLATE
85 x 35 x 4 DIA. 18



SR201 - SETSCREW 8.8
M16x45 c/w NUT

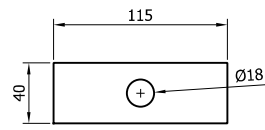


SR200 - SETSCREW 4.6
LIP M16x27 c/w NUT

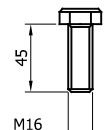


SR300 - WASHER
18Ø

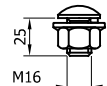
FIXINGS FOR 2.5MM THICK BEAM



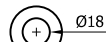
SR741 - WASHER PLATE
115 x 40 x 5 DIA. 18



SR740 - SETSCREW 8.8
M16x45



SR730 - SETSCREW 8.8
LIP M16x25 c/w
FLANGE NUT

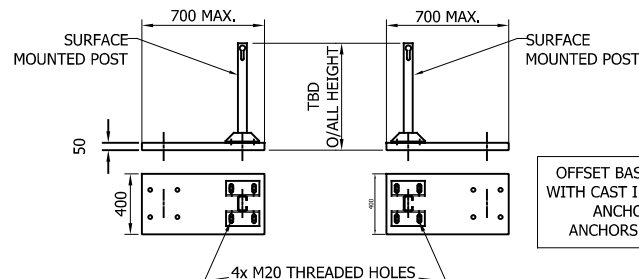


SR742 - M16 WASHER

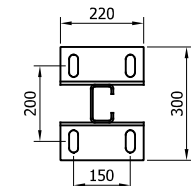
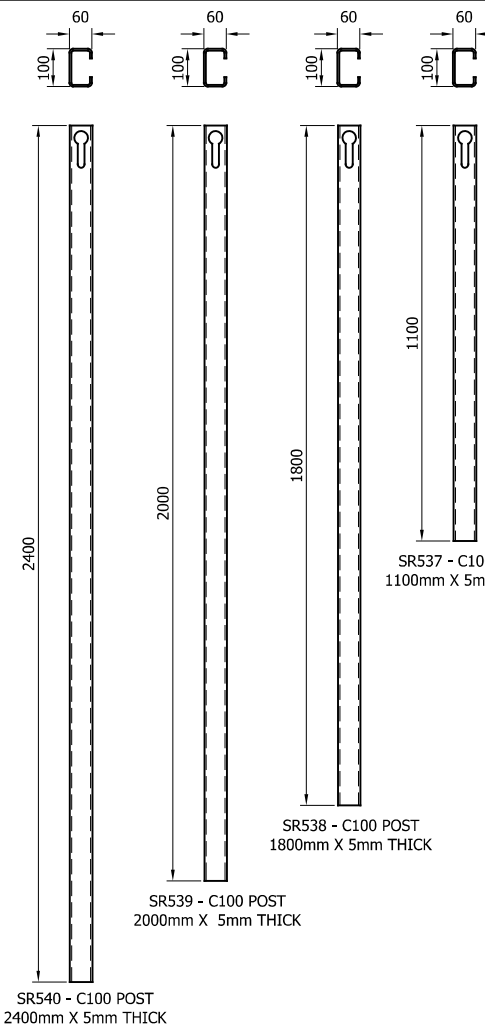


SR743 - M16 HEX NUT

FIXINGS FOR 3MM THICK BEAM



*BASEPLATE DRILL & TAPPED FOR LIFTING EYE



SR541 - SURFACE
MOUNTED C100 POST
5MM THICK



SR100 - A21
REINFORCING
RING

REVn	DATE	DETAILS	INITIAL
17	26/11/24	SR201 BOLT UPDATE	H.B
16	13/08/24	2.5mm BEAM WASHER PLATE CHANGE	H.B
15	17/05/24	3MM BEAM LAP BOLT GRADE CHANGE	H.B
14	22/03/24	COMPONENTS UPDATED	H.B
13	20.06.23	SOCKET SIZE CHANGED	A.D
12	21.07.22	SOCKET SIZE CHANGED	A.D
11	27.06.22	SURFACE MOUNTED POST HEIGHT CHANGED	A.D
10	13.05.22	SURFACE MOUNTED POST BASE CHANGED	A.D
09	19.01.22	ENLARGER DETAIL CHANGED & STIFFENER ADDED TO SMP	A.D
08	22.10.21	BEAM WIDTH ALTERED	A.D
07	23.09.21	DETAIL OF ITEM SR730 ALTERED	A.D
06	27.05.21	DETAILS REVISED	M.T
05	22.07.20	EXP BEAM NOTE ADDED	M.T
04	18.06.20	EXPANSION BEAMS ADDED	M.T
03	21.06.19	BEAM LENGTH REVISED	M.T
02	12.02.19	DETAILS REVISED	M.T
01	06.11.18	BEAM CODES REVISED	M.T

MegaRail ep CC6 N2W4

N2W4 VEHICLE RESTRAINT SYSTEM
COMPONENTS SCHEMATIC



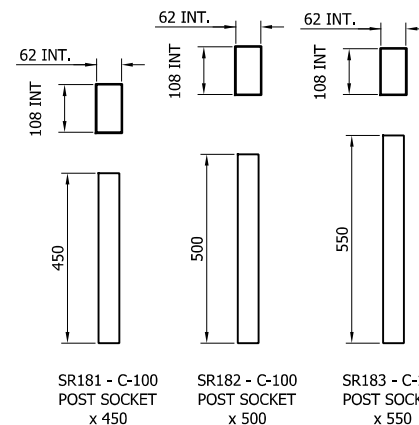
CONCORD HOUSE,
BESSEMER WAY, SCUNTHORPE,
NORTH LINCOLNSHIRE, DN15 8XE
t: 01724 289119
FOR TECHNICAL ASSISTANCE CONTACT
john.cudlipp@saferoad.co.uk

DRAWING NUMBER:

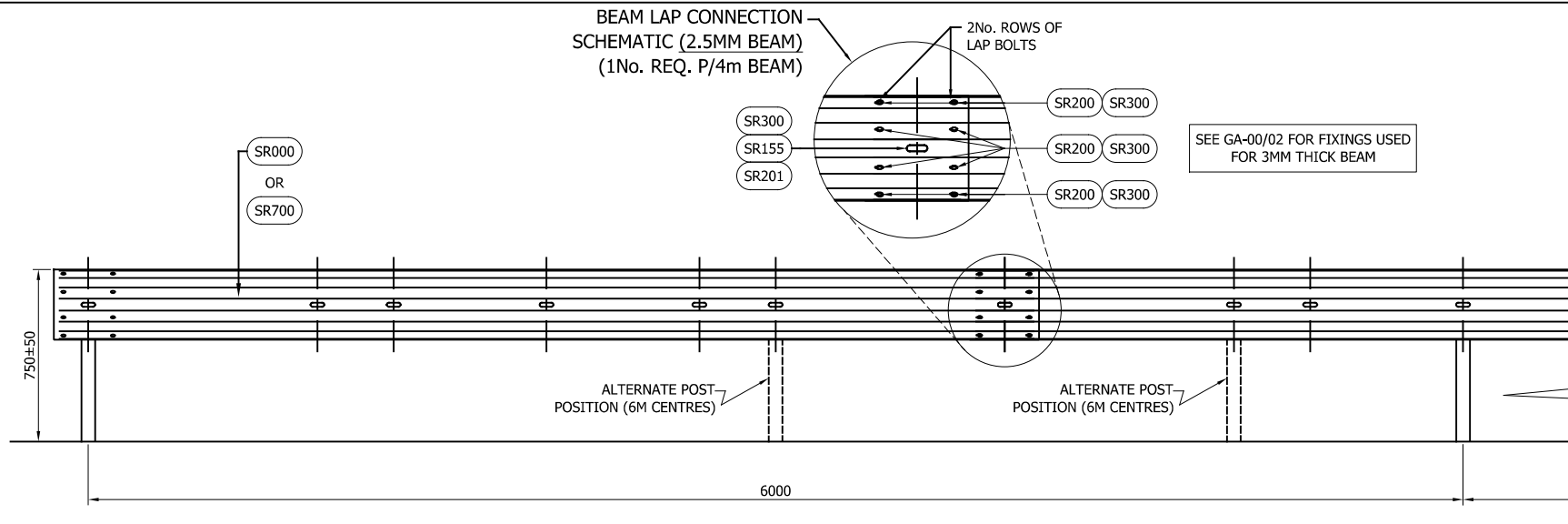
epN2W4-GA-00

REVn:

17



BEAM LAP CONNECTION
SCHEMATIC (2.5MM BEAM)
(1No. REQ. P/4m BEAM)



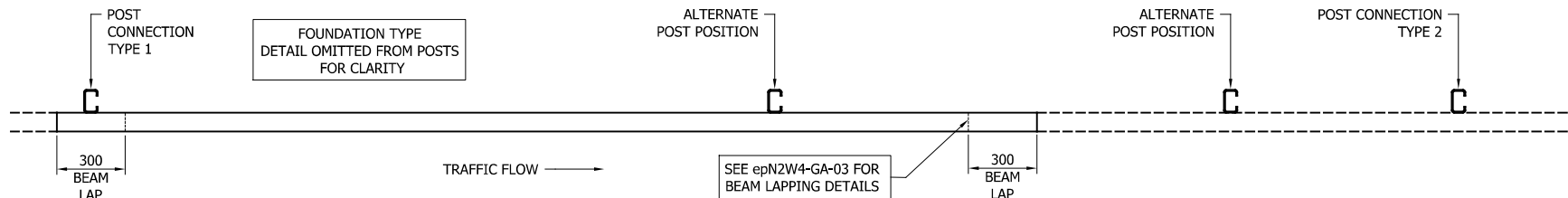
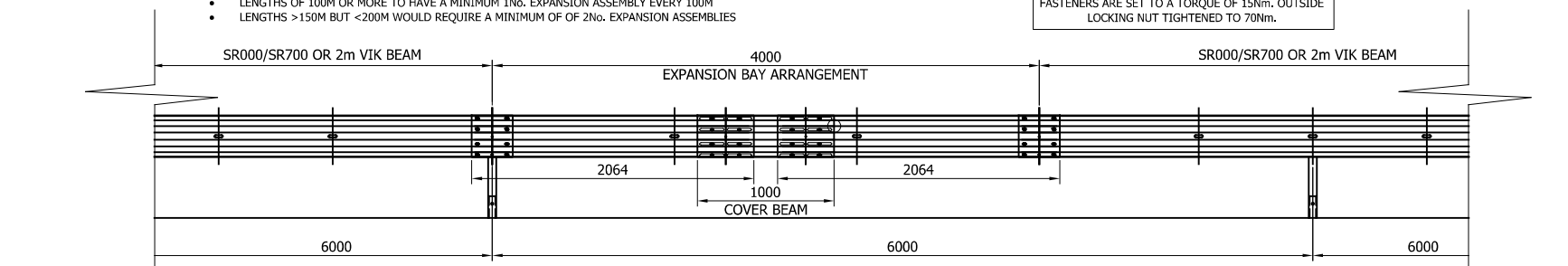
GENERAL NOTES:

1. P.S.B. = POINT FROM WHERE SET-BACK IS MEASURED.
2. POSTS ARE TO BE INSTALLED WITH THE CLOSED FACE OF THE CHANNEL TOWARDS THE ON-COMING TRAFFIC.
3. FOR OPTIONS ON POST FOUNDATIONS REFER TO DRAWING NUMBER MR-GA-020
4. FOR DEVIATIONS IN SYSTEM POST PITCH REFER TO DRAWING epN2W4-GA-40
5. WHEN TYING INTO ADJACENT VRS ONLY ONE WORKING WIDTH DIFFERENCE IS PERMITTED.
6. WHERE A KERB IS PRESENT THE MAXIMUM KERB HEIGHT IS 100mm. SHOULD THE KERB BE HIGHER THAN 100mm AND THE FENCE IS SETBACK LESS THAN 250mm FROM FACE OF KERB THE SYSTEM HEIGHT IS MEASURED FROM THE CARRIAGEWAY. IF THE SETBACK IS MORE THAN 250mm FROM THE FACE OF KERB THE SYSTEM HEIGHT IS MEASURED FROM THE TOP OF THE KERB, SEE MR-GA-002.
7. FOR MINIMUM LENGTH OF FULL HEIGHT VRS REFER TO SAFEROAD MEGARAIL MANUAL.
8. CORRUGATE BEAMS SR000/SR700 MAY BE USED. FIXINGS APPROPRIATE TO BEAM TYPE MUST BE USED. SEE epN2W4-GA-00 FOR FURTHER DETAILS

EXPANSION ARRANGEMENT INSTALLATION GUIDELINE:

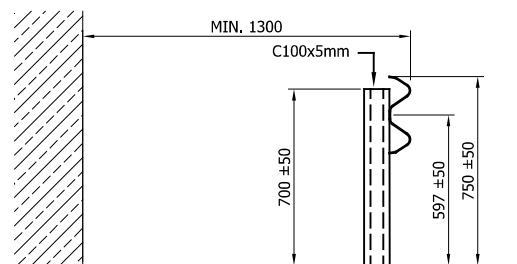
- ANY LENGTH GREATER THAN 50M TO HAVE AT LEAST 1No. EXPANSION ASSEMBLY
- LENGTHS OF 100M OR MORE TO HAVE A MINIMUM 1No. EXPANSION ASSEMBLY EVERY 100M
- LENGTHS >150M BUT <200M WOULD REQUIRE A MINIMUM OF 2No. EXPANSION ASSEMBLIES

INSTALLATION TEAM TO CHECK EXPANSION ASSEMBLY
FASTENERS ARE SET TO A TORQUE OF 15Nm. OUTSIDE
LOCKING NUT TIGHTENED TO 70Nm.



TOTAL COMPONENTS PER 4M BEAM		
SAFEROAD PART NUMBER	DESCRIPTION	QUANTITY
SR000 /SR700	'A' PROFILE BEAM 2.5MM/3MM THICK	1
SEE TABLE 'B'	POST C100 (5mm THICK)	1
FOR SCHEDULE OF BOLTED CONNECTIONS REFER TO DRAWING NUMBER epN2W4-GA-02		

TABLE 'B' - SCHEDULE OF POST REFERENCE NUMBERS AND LENGTHS	
SAFEROAD PART NUMBER	POST LENGTH
SR537	1100
SR538	1800
SR539	2000
SR540	2400



MegaRail ep CC6 N2W4

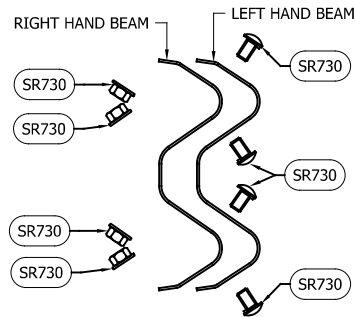
SYSTEM ASSEMBLY AND SETTING
OUT ARRANGEMENT SCHEMATIC



CONCORD HOUSE,
BESSEMER WAY, SCUNTHORPE,
NORTH LINCOLNSHIRE, DN15 8XE
t: 01724 289119
FOR TECHNICAL ASSISTANCE CONTACT
john.cudlipp@saferoad.co.uk

DRAWING NUMBER: REVn:

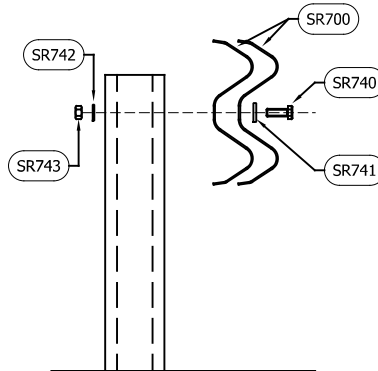
epN2W4-GA-01 14



BEAM LAP FIXING SCHEMATIC
(x2 LOCATIONS / BEAM END)

** BEAM REFERENCES i.e. LEFT / RIGHT HAND ARE FOR
VERGE INSTALLATIONS; FOR CENTRAL RESERVATION INSTALLATIONS
THE REFERENCES ARE REVERSED

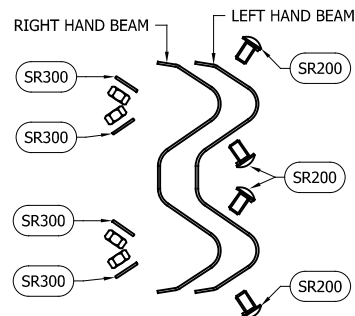
TOTAL QUANTITIES PER BEAM		
SAFEROAD PART NUMBER	DESCRIPTION	BEAM LAP CONNECTION
SR730	SETSCREW 8.8 LIP M16x27 c/w FLANGE NUT	8 (+8)



BEAM TO POST FIXING SCHEMATIC
(CONNECTION TYPE 1)

TOTAL QUANTITIES PER POST		
SAFEROAD PART NUMBER	DESCRIPTION	BEAM TO POST CONNECTION
SR740	SETSCREW 8.8 M16 x 45	1
SR741	WASHER PLATE 115 x 40 x 5 DIA. 18	1
SR742	WASHER M16 18Ø HOLE	1
SR743	M16 HEXAGON NUT	1

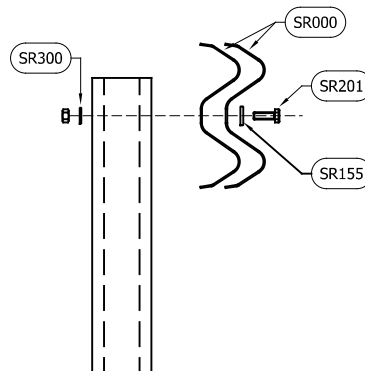
FIXINGS FOR 3MM THICK BEAM



BEAM LAP FIXING SCHEMATIC
(x2 LOCATIONS / BEAM END)

** BEAM REFERENCES i.e. LEFT / RIGHT HAND ARE FOR
VERGE INSTALLATIONS; FOR CENTRAL RESERVATION INSTALLATIONS
THE REFERENCES ARE REVERSED

TOTAL QUANTITIES PER BEAM		
SAFEROAD PART NUMBER	DESCRIPTION	BEAM LAP CONNECTION
SR200	SETSCREW 4.6 LIP M16x27 c/w NUT	8 (+8)
SR300	WASHER M16 18Ø HOLE	8 (+8)



BEAM TO POST FIXING SCHEMATIC
(CONNECTION TYPE 1)

TOTAL QUANTITIES PER POST		
SAFEROAD PART NUMBER	DESCRIPTION	BEAM TO POST CONNECTION
SR201	SETSCREW 8.8 M16 x 45 c/w NUT	1
SR155	WASHER PLATE 85 x 35 x 4 DIA. 18	1
SR300	WASHER M16 18Ø HOLE	1

FIXINGS FOR 2.5MM THICK BEAM

GENERAL NOTES:

- NUMBERS IN THE SCHEDULES SUFFIXED (+)
DENOTES THE ADDITIONAL QUANTITY OF
COMPONENTS REQUIRED FOR EXTREME ENDS
OF INDIVIDUAL RUNS OF BARRIER.

06	13/08/24	2.5mm BEAM WASHER PLATE CHANGE	H.B
05	17/05/24	3MM BEAM LAP BOLT GRADE CHANGE	H.B
04	22/03/24	COMPONENTS UPDATED	H.B
03	23.09.21	NUT & WASHER REMOVED AND REPLACED WITH FLANGE NUT	A.D
02	12.02.19	TITLEBLOCK REVISED	M.T
01	06.11.18	BEAM CODES REVISED	M.T
00	20.09.18	DRAWING CREATED	H.B
REVn	DATE	DETAILS	INITIAL

MegaRail ep CC6 N2W4

FIXING & INSTALLATION SCHEMATIC

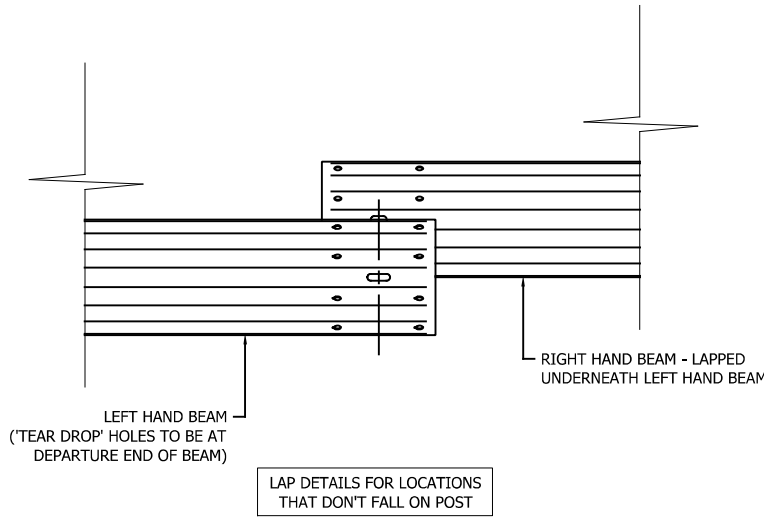
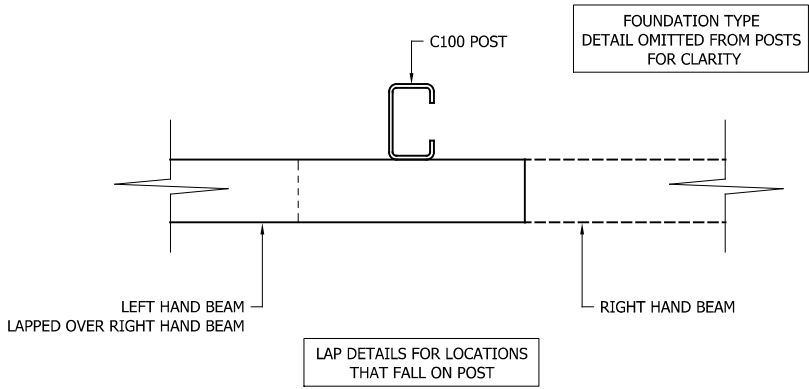
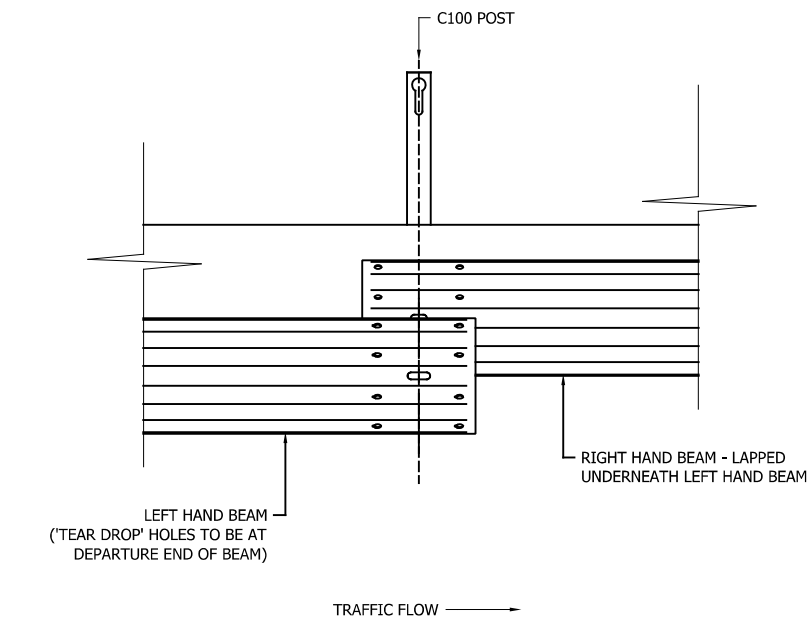


CONCORD HOUSE,
BESSEMER WAY, SCUNTHORPE,
NORTH LINCOLNSHIRE, DN15 8XE
t: 01724 289119
FOR TECHNICAL ASSISTANCE CONTACT
john.cudlipp@saferoad.co.uk

DRAWING NUMBER:	REVn:
epN2W4-GA-02	06

GENERAL NOTES:

1. POSTS ARE TO BE INSTALLED WITH THE CLOSED FACE OF THE CHANNEL TOWARDS THE ON-COMING TRAFFIC.



03	22/03/24	DRAWING UPDATED	H.B
02	27.06.22	NOTES REMOVED	A.D
01	12.02.19	TITLEBLOCK REVISED	M.T
00	20.09.18	DRAWING CREATED	H.B
REVn	DATE	DETAILS	INITIAL

MegaRail ep CC6 N2W4

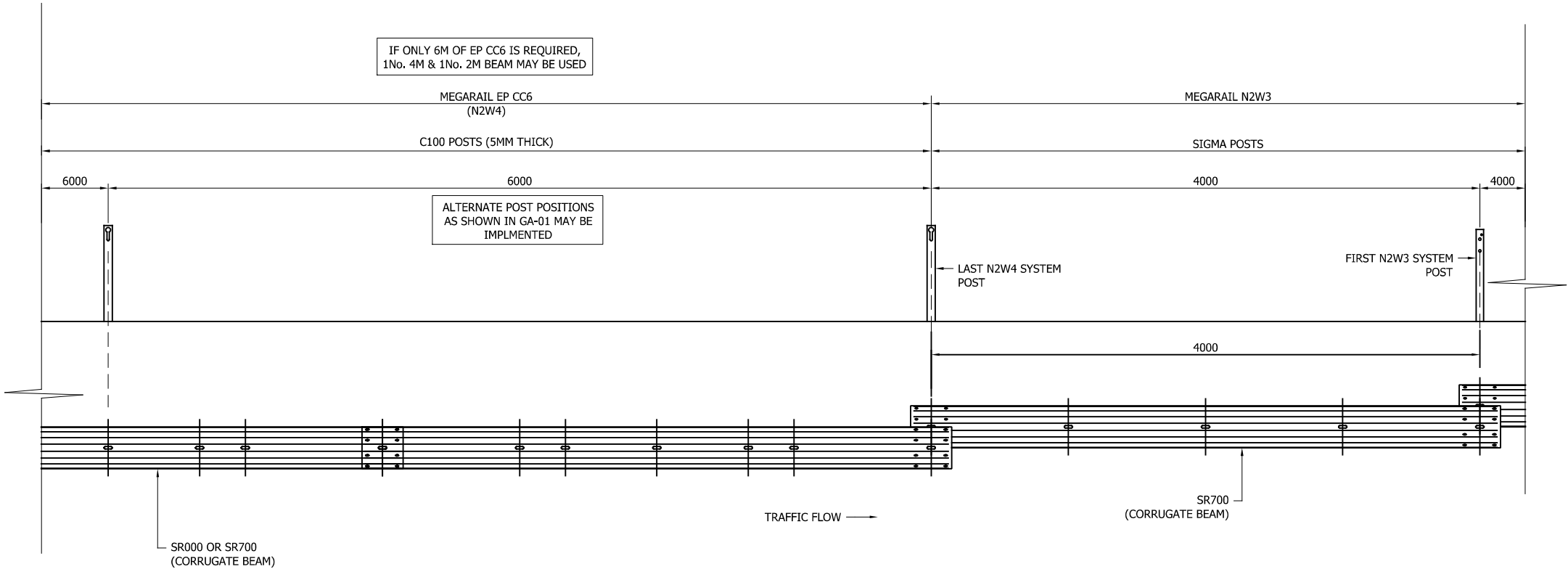
BEAM LAPPING DETAILS



CONCORD HOUSE,
BESSEMER WAY, SCUNTHORPE,
NORTH LINCOLNSHIRE, DN15 8XE
t: 01724 289119
FOR TECHNICAL ASSISTANCE CONTACT
john.cudlipp@saferoad.co.uk

DRAWING NUMBER:	REVn:
epN2W4-GA-03	03

** BEAM REFERENCES i.e. LEFT / RIGHT HAND ARE FOR VERGE INSTALLATIONS; FOR CENTRAL RESERVATION INSTALLATIONS THE REFERENCES ARE REVERSED



MegaRail ep CC6 N2W4

SYSTEM PROGRESSION DETAILS

- GENERAL NOTES:
1. POSTS ARE TO BE INSTALLED WITH THE CLOSED FACE OF THE CHANNEL TOWARDS THE ON-COMING TRAFFIC.

07	22/03/24	DRAWING UPDATED	H.B
06	27.06.22	NOTES REMOVED	A.D
05	19.10.21	DETAILS REVISED	A.D
04	08.10.21	DIMENSION ARROW ON C POSTS MOVED	A.D
03	23.09.21	HOLES IN SIGMA POSTS CHANGED	A.D
02	09.02.21	DETAILS REVISED	M.T
01	12.02.19	DETAILS REVISED	M.T
00	20.09.18	DRAWING CREATED	H.B
REVn	DATE	DETAILS	INITIAL



CONCORD HOUSE,
BESSEMER WAY, SCUNTHORPE,
NORTH LINCOLNSHIRE, DN15 8XE
t: 01724 289119
FOR TECHNICAL ASSISTANCE CONTACT
john.cudlipp@saferoad.co.uk

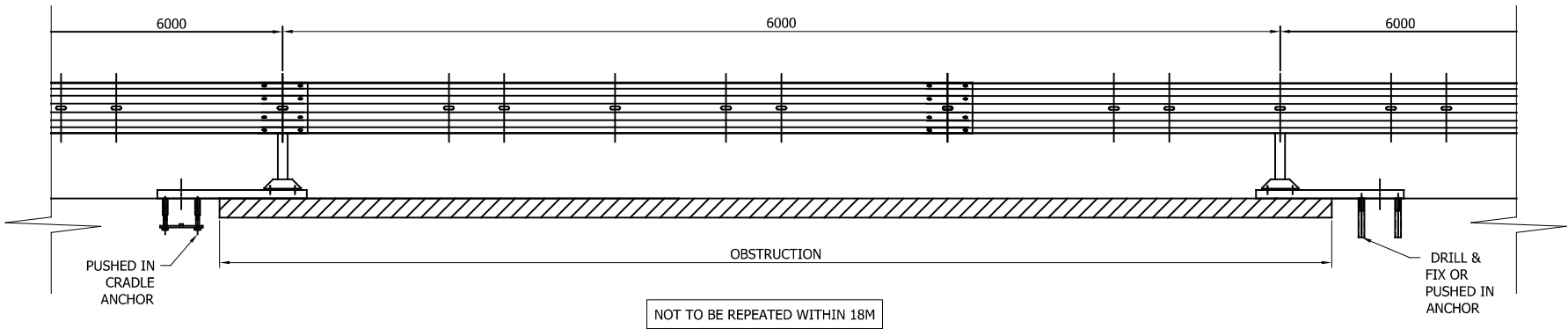
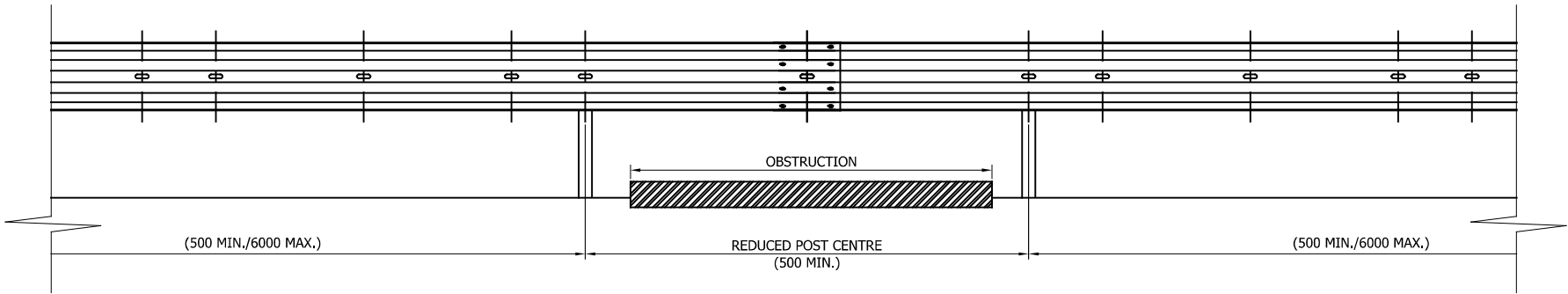
DRAWING NUMBER:

epN2W4-GA-20

REVn:

07

- GENERAL NOTES:
1. IN PRINCIPLE, THE DISTANCE BETWEEN THE POSTS ARE NOT EXCEEDED. IF THE SITE CONDITIONS DO NOT ALLOW A REGULAR DISTANCE, THE POST SPACING MUST BE REDUCED WITH AN ADDITIONAL POST.
 2. OFFSET POSTS SHOWN ON DRAWING epN2W4-GA-00 CAN BE USED.



04	22/03/24	DRAWING UPDATED	H.B
03	15.03.22	SURFACE MOUNTED POST BASE CHANGED	A.D
02	23.07.21	SURFACE MOUNTED POST DETAIL ADDED	A.D
01	12.02.19	TITLEBLOCK REVISED	M.T
00	20.09.18	DRAWING CREATED	H.B
REVn	DATE	DETAILS	INITIAL

MegaRail ep CC6 N2W4

DETAILS OF PERMISSABLE
DEVIATIONS FOR POST POSITIONS

 **SAFEROAD**

CONCORD HOUSE,
BESSEMER WAY, SCUNTHORPE,
NORTH LINCOLNSHIRE, DN15 8XE
t: 01724 289119
FOR TECHNICAL ASSISTANCE CONTACT
john.cudlipp@saferoad.co.uk

DRAWING NUMBER:	REVn:
epN2W4-GA-40	04

