

10	25/03/24	POST TYPE CHANGE	H.B
09	20/06/23	SOCKET SIZE CHANGED	A.D
08	21/07/22	SOCKET SIZE CHANGED	A.D
07	19/01/22	HOLE REMOVED & STIFFENER ADDED TO S.M.P	A.D
06	23/09/21	DETAILS REVISED	M.T
05	12/02/19	DETAILS REVISED	M.T
04	12/02/19	REVISED TITLEBLOCK AND ADDED DETAIL	H.B
03	26.11.18	BASEPLATE DETAIL REVISED	H.B
02	17/10/18	DETAILS CORRECTED	M.T
01	20/04/17	BEAM TYPE REVISED	M.T
00	14/03/17	DRAWING CREATED	M.T
REVn	DATE	DETAILS	INITIAL

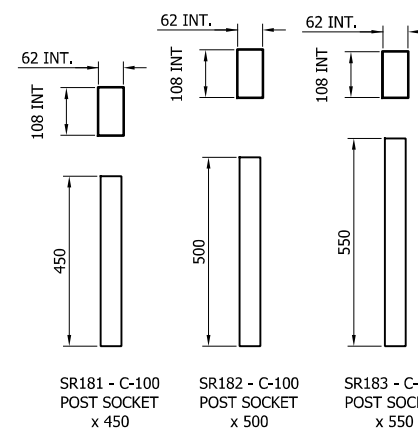
MegaRail ex H1W2 VI 4

H1W2 VEHICLE RESTRAINT SYSTEM
COMPONENTS SCHEMATIC

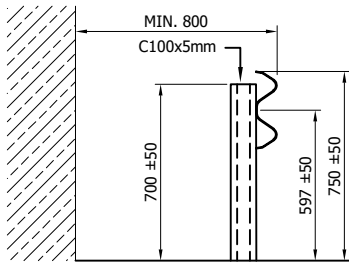
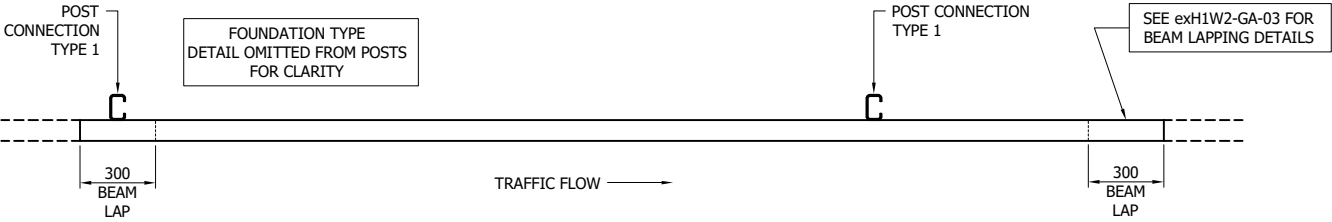
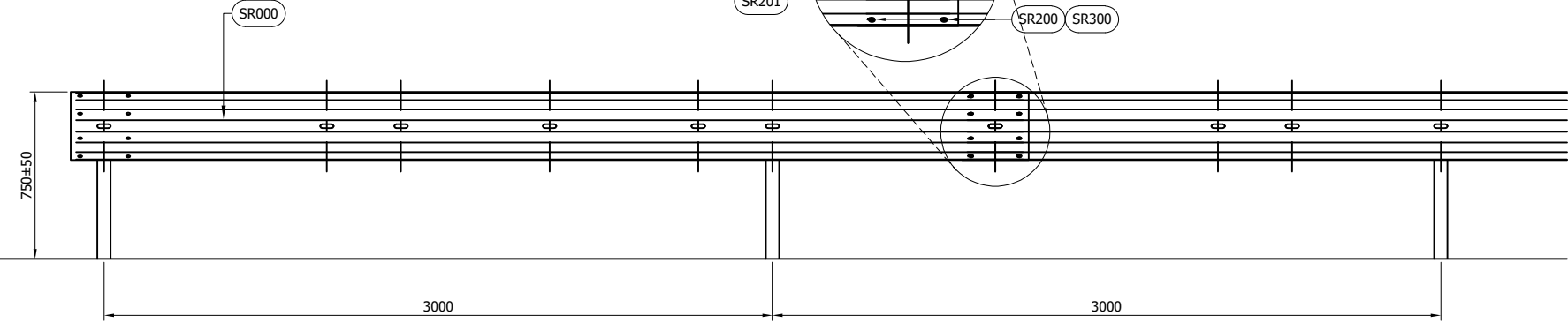
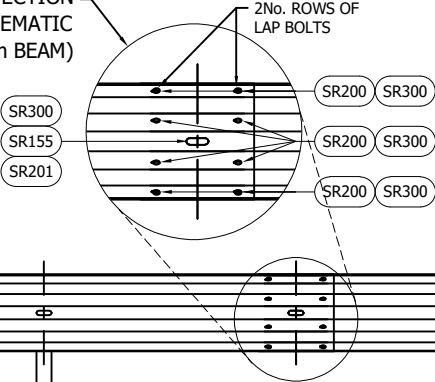


CONCORD HOUSE,
BESSEMER WAY, SCUNTHORPE,
NORTH LINCOLNSHIRE, DN15 8XE
t: 01724 289119
FOR TECHNICAL ASSISTANCE CONTACT
john.cudlipp@saferoad.co.uk

DRAWING NUMBER:	REVn:
exH1W2-GA-00	10



BEAM LAP CONNECTION
SCHEMATIC
(1No. REQ. P/4m BEAM)



- GENERAL NOTES:
- 1. P.S.B. = POINT FROM WHERE SET-BACK IS MEASURED.
 - 2. POSTS ARE TO BE INSTALLED WITH THE CLOSED FACE OF THE CHANNEL TOWARDS THE ON-COMING TRAFFIC.
 - 3. FOR OPTIONS ON POST FOUNDATIONS REFER TO DRAWING NUMBER MR-GA-020
 - 4. FOR DEVIATIONS IN SYSTEM POST PITCH REFER TO DRAWING exH1W2-GA-40
 - 5. WHEN TYING INTO ADJACENT VRS ONLY ONE WORKING WIDTH DIFFERENCE IS PERMITTED.
 - 6. SEE MR-GA-001 & MR-GA-003 FOR SYSTEM HEIGHT WITH REFERENCE TO SETBACK & KERB HEIGHTS.
 - 7. FOR MINIMUM LENGTH OF FULL HEIGHT VRS REFER TO SAFEROAD MEGARAIL MANUAL.

06	25/03/24	POST TYPE CHANGE	H.B
05	18/03/22	TABLE 'A' REVISED	A.D
04	08/10/21	GENERAL NOTE 6 REVISED	A.D
03	01/04/19	SECTION VIEW REVISED	M.T
02	12/02/19	TITLEBLOCK REVISED	H.B
01	20/04/17	BEAM TYPE REVISED	M.T
00	14/03/17	DRAWING CREATED	M.T
REVn	DATE	DETAILS	INITIAL

MegaRail ex
H1W2 VI 4

SYSTEM ASSEMBLY AND SETTING
OUT ARRANGEMENT SCHEMATIC

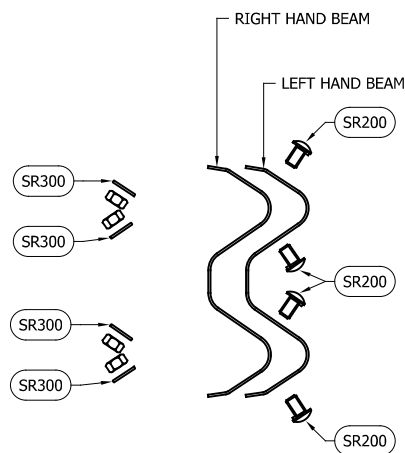


CONCORD HOUSE,
BESSEMER WAY, SCUNTHORPE,
NORTH LINCOLNSHIRE, DN15 8XE
t: 01724 289119
FOR TECHNICAL ASSISTANCE CONTACT
john.cudlipp@saferoad.co.uk

TOTAL COMPONENTS PER 4M BEAM		
SAFEROAD PART NUMBER	DESCRIPTION	QUANTITY
SR000	BEAM "A" PROFILE 4.3m x 2.5mm	1
SEE TABLE 'B'	POST C100 (5mm THICK)	2
FOR SCHEDULE OF BOLTED CONNECTIONS REFER TO DRAWING NUMBER exH1W2-GA-02		

TABLE 'B' - SCHEDULE OF POST REFERENCE NUMBERS AND LENGTHS	
SAFEROAD PART NUMBER	POST LENGTH
SR537	1100
SR538	1800
SR539	2000
SR540	2400

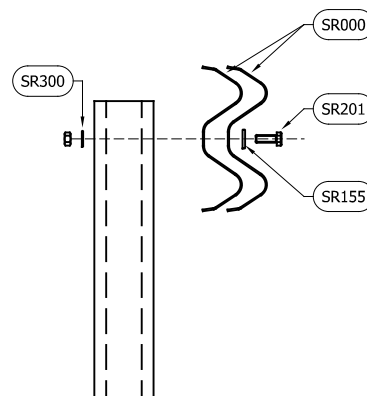
DRAWING NUMBER:	REVn:
exH1W2-GA-01	06



BEAM LAP FIXING SCHEMATIC
(x2 LOCATIONS / BEAM END)

** BEAM REFERENCES i.e. LEFT / RIGHT HAND ARE FOR VERGE INSTALLATIONS; FOR CENTRAL RESERVATION INSTALLATIONS THE REFERENCES ARE REVERSED

TOTAL QUANTITIES PER BEAM		
SAFEROAD PART NUMBER	DESCRIPTION	BEAM LAP CONNECTION
SR200	SETSCREW 4,6 LIP M16x27 c/w NUT	8 (+8)
SR300	WASHER M16 18Ø HOLE	8 (+8)



BEAM TO POST FIXING
SCHEMATIC
(CONNECTION TYPE 1)

TOTAL QUANTITIES PER POST		
SAFEROAD PART NUMBER	DESCRIPTION	BEAM TO POST CONNECTION
SR201	SETSCREW 8,8 M16 x 45 c/w NUT	1
SR155	WASHER PLATE 85 x 35 x 4 DIA. 18	1
SR300	WASHER M16 18Ø HOLE	1

GENERAL NOTES:

- NUMBERS IN THE SCHEDULES SUFFIXED (+) DENOTES THE ADDITIONAL QUANTITY OF COMPONENTS REQUIRED FOR EXTREME ENDS OF INDIVIDUAL RUNS OF BARRIER.

03	25/03/24	POST TYPE CHANGE	H.B
02	12/02/19	TITLEBLOCK REVISED	H.B
01	20/04/17	BEAM TYPE REVISED	M.T
00	14/03/17	DRAWING CREATED	M.T
REVn	DATE	DETAILS	INITIAL

MegaRail ex H1W2 VI 4

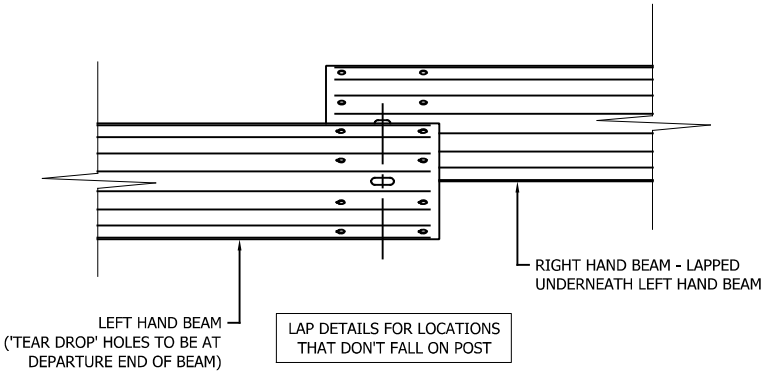
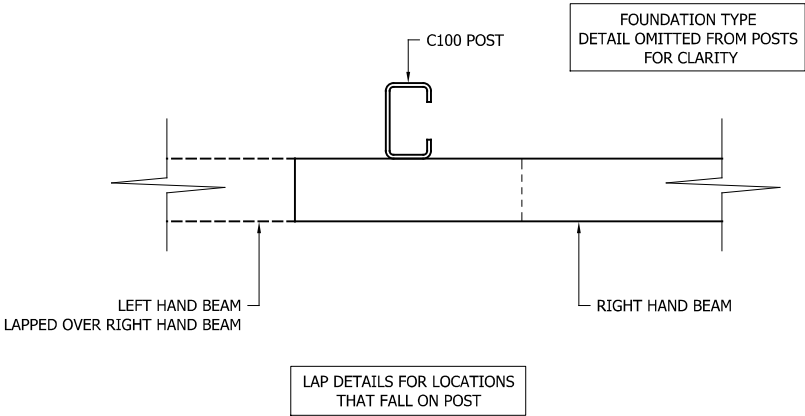
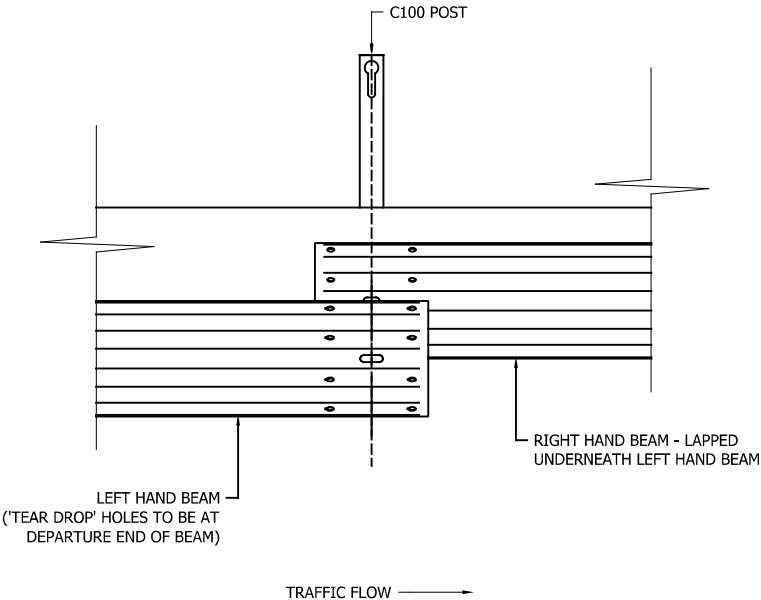
FIXING & INSTALLATION SCHEMATIC



CONCORD HOUSE,
BESSEMER WAY, SCUNTHORPE,
NORTH LINCOLNSHIRE, DN15 8XE
t: 01724 289119
FOR TECHNICAL ASSISTANCE CONTACT
john.cudlipp@saferoad.co.uk

DRAWING NUMBER:	REVn:
exH1W2-GA-02	03

- GENERAL NOTES:
1. POSTS ARE TO BE INSTALLED WITH THE CLOSED FACE OF THE CHANNEL TOWARDS THE ON-COMING TRAFFIC.



02	25/03/24	DRAWING UPDATED	H.B
01	12/02/19	TITLEBLOCK REVISED	H.B
00	14/03/17	DRAWING CREATED	M.T
REVn	DATE	DETAILS	INITIAL

MegaRail ex H1W2 VI 4

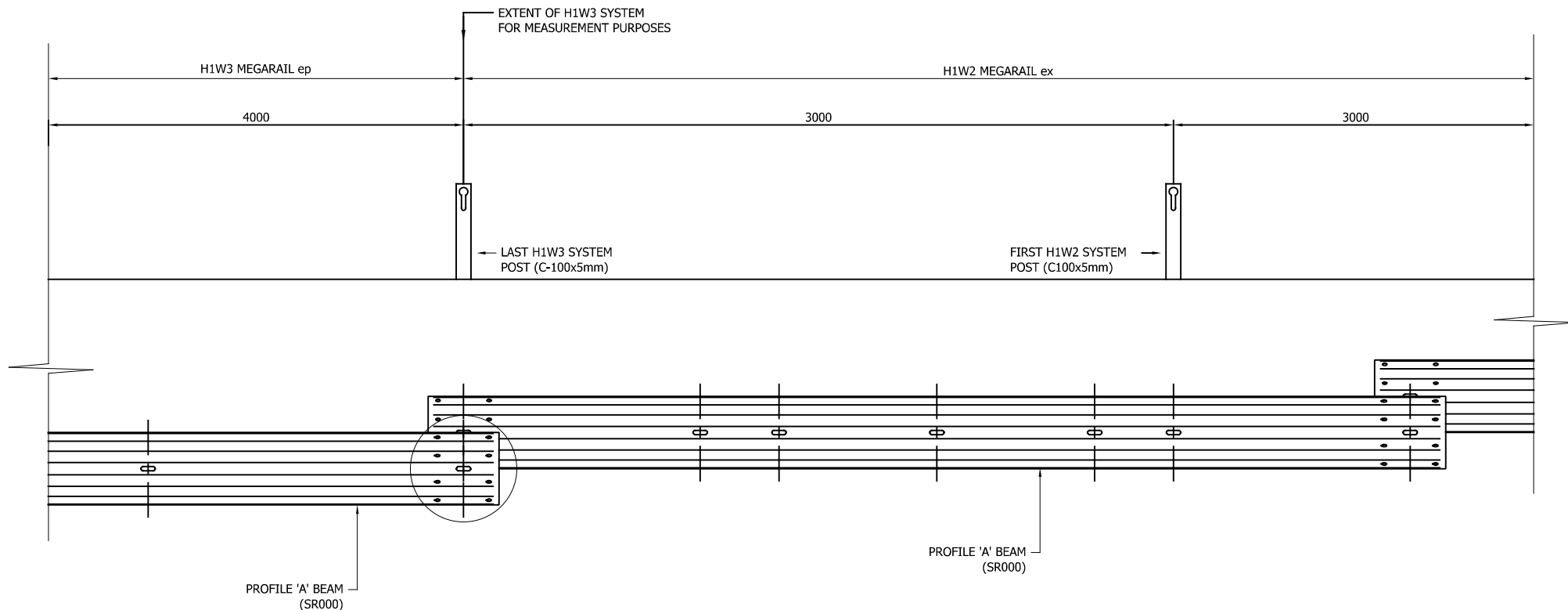
BEAM LAPPING DETAILS



CONCORD HOUSE,
BESSEMER WAY, SCUNTHORPE,
NORTH LINCOLNSHIRE, DN15 8XE
t: 01724 289119
FOR TECHNICAL ASSISTANCE CONTACT
john.cudlipp@saferoad.co.uk

DRAWING NUMBER:	REVn:
exH1W2-GA-03	02

** BEAM REFERENCES i.e. LEFT / RIGHT HAND ARE FOR VERGE INSTALLATIONS; FOR CENTRAL RESERVATION INSTALLATIONS THE REFERENCES ARE REVERSED



MegaRail ex H1W2 VI 4

SYSTEM PROGRESSION DETAILS



CONCORD HOUSE,
BESSEMER WAY, SCUNTHORPE,
NORTH LINCOLNSHIRE, DN15 8XE
t: 01724 289119

FOR TECHNICAL ASSISTANCE CONTACT
john.cudlipp@saferoad.co.uk

GENERAL NOTES:

1. POSTS ARE TO BE INSTALLED WITH THE CLOSED FACE OF THE CHANNEL TOWARDS THE ON-COMING TRAFFIC.

** BEAM REFERENCES i.e. LEFT / RIGHT HAND ARE FOR VERGE INSTALLATIONS; FOR CENTRAL RESERVATION INSTALLATIONS THE REFERENCES ARE REVERSED

NOTE: BEAM ORIENTATION CIRCULAR HOLES TO BEAM APPROACH END

02	25/03/24	DRAWING UPDATED	H.B
01	12/02/19	TITLEBLOCK REVISED	H.B
00	14/03/17	DRAWING CREATED	M.T
REVn	DATE	DETAILS	INITIAL

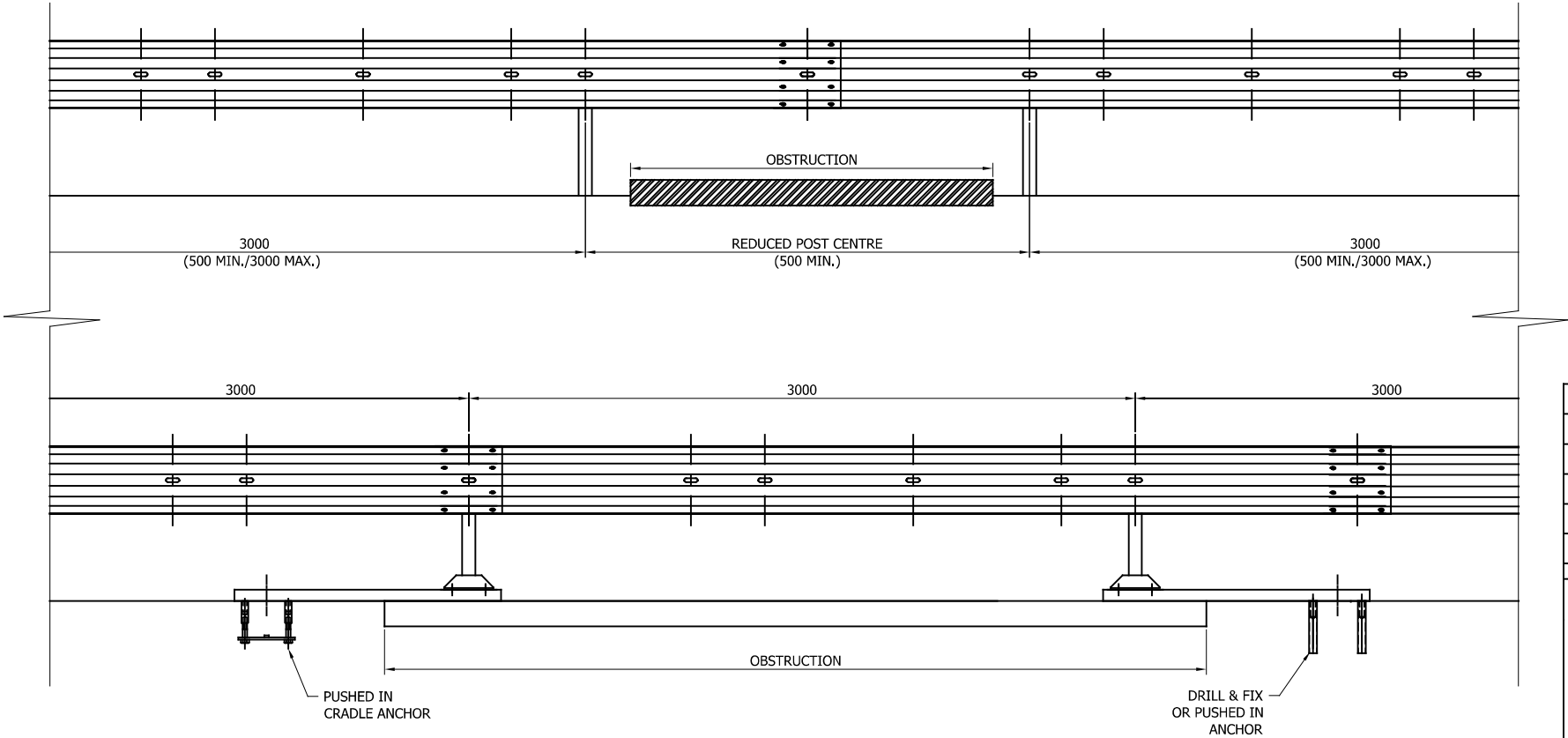
DRAWING NUMBER:

exH1W2-GA-20

REVn:

02

- GENERAL NOTES:
- 1. IN PRINCIPLE, THE DISTANCE BETWEEN THE POSTS ARE NOT EXCEEDED. IF THE SITE CONDITIONS DO NOT ALLOW A REGULAR DISTANCE, THE POST SPACING MUST BE REDUCED WITH AN ADDITIONAL POST.
 - 2. OFFSET POSTS SHOWN ON DRAWING exH1W2-GA-00 CAN BE USED.



05	25/03/24	DRAWING UPDATED	H.B
04	23/07/21	SURFACE MOUNTED POST DETAIL ADDED	A,D
03	12/02/19	TITLEBLOCK REVISED	H.B
02	17/10/18	DETAILS CORRECTED	M.T
01	28/03/17	DETAILS REVISED	M.T
00	14/03/17	DRAWING CREATED	M.T
REVn	DATE	DETAILS	INITIAL

MegaRail ex H1W2 VI 4

DETAILS OF PERMISSABLE
DEVIATIONS FOR POST POSITIONS



CONCORD HOUSE,
BESSEMER WAY, SCUNTHORPE,
NORTH LINCOLNSHIRE, DN15 8XE
t: 01724 289119
FOR TECHNICAL ASSISTANCE CONTACT
john.cudlipp@saferoad.co.uk

DRAWING NUMBER:	REVn:
exH1W2-GA-40	05