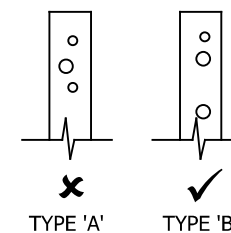


## POST TOP DRILLING ARRANGEMENT



15	17/05/24	LAP BOLT GRADE CHANGE	H.B
14	22/03/24	DRAWING UPDATED	H.B
13	13/05/22	SURFACE MOUNTED POST BASE CHANGED	A.D
12	17/12/21	DETAILS REVISED	A.D
11	22/10/21	SR700 BEAM WIDTH DIMENSION ALTERED	A.D
10	23/09/21	DETAIL OF ITEM SR730 ALTERED	A.D
09	26/08/21	DETAILS REVISED	M.T
08	11/06/21	DETAILS REVISED	M.T
07	28/08/19	DETAILS REVISED	M.T
06	20/06/19	DETAILS REVISED	M.T
05	12/02/19	MINOR DETAIL CHANGES AND TITLE BLOCK CHANGE	H.B
04	20/04/17	VI RATING REMOVED	L.L
03	10/03/17	OFFSET POST REVISED	L.L
02	26/01/17	DETAILS REVISED	L.L
1.0	21/05/15	DETAILS REVISED	M.T
REVn	DATE	DETAILS	INITIAL

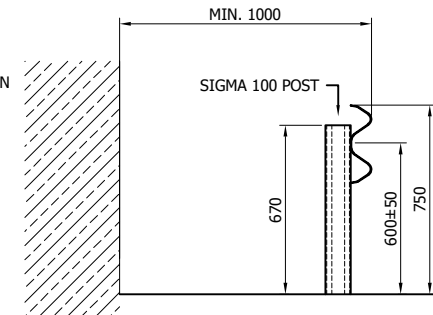
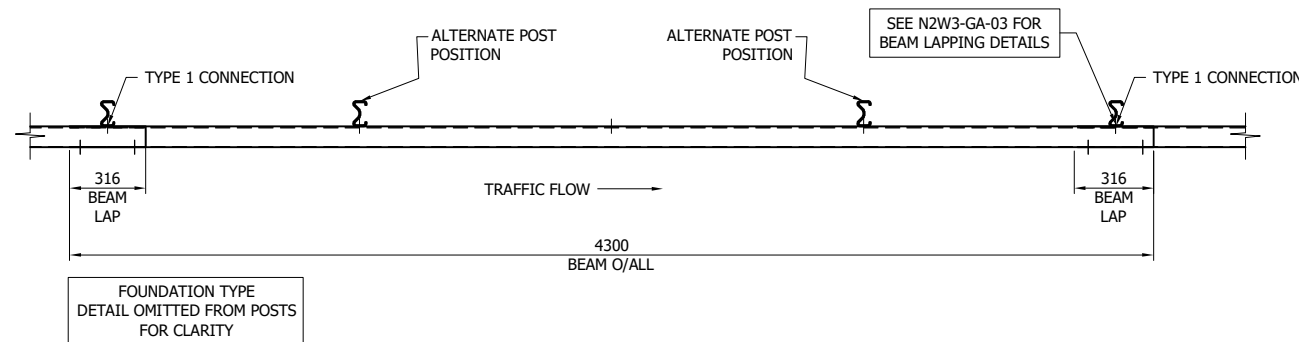
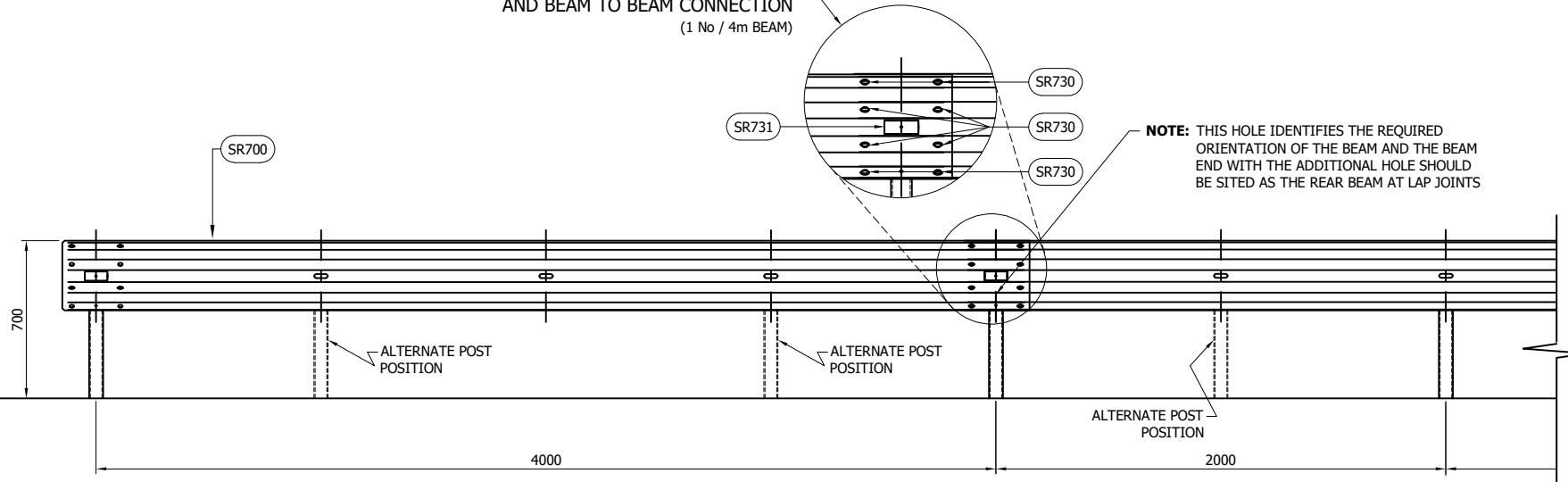
## MegaRail VIK CC2-W3 (POST CENTRES AT 2M) & MegaRail VIK CC4-W3 (POST CENTRES AT 4M)

## COMPONENTS SCHEMATIC



DRAWING NUMBER:	REVn:
N2W3-GA-00	15

BEAM TO POST CONNECTION TYPE 1  
AND BEAM TO BEAM CONNECTION  
(1 No / 4m BEAM)



GENERAL NOTES:

1. POSTS ARE TO BE INSTALLED WITH THE CLOSED FACE OF THE CHANNEL TOWARDS THE ON-COMING TRAFFIC.
2. POST CENTRES MAY BE INSTALLED AT EITHER 2m OR 4m CENTRES, AS SHOWN IN ELEVATION, TO ACCOMMODATE LOCAL OBSTRUCTIONS. THE SYSTEM SHOULD RETURN TO 4m CENTRES WITH POSTS AT THE BEAM LAP JOINTS LOCATIONS, AS PLAN VIEW, AS SOON AS IS PRACTICAL.
3. FOR OPTIONS ON POST FOUNDATIONS REFER TO DRAWING NUMBER MR-GA-020
4. FOR DEVIATIONS IN SYSTEM POST PITCH REFER TO DRAWING N2W3-GA-40
5. WHEN TYING INTO ADJACENT VRS ONLY ONE WORKING WIDTH DIFFERENCE IS PERMITTED.
6. SEE MR-GA-001 & MR-GA-003 FOR DETAILS OF SYSTEM HEIGHTS WITH REFERENCE TO SETBACK & KERB HEIGHTS
7. FOR MINIMUM LENGTH OF FULL HEIGHT VRS REFER TO SAFEROAD MEGARAIL MANUAL, SEE DRAWING MR-GA-042.
8. THE SYSTEM CAN HAVE 2M OR 4M SPACINGS
9. BEAMS HAVE SLOTS 1M APART RATHER THAN THE 1333MM SPACINGS OF OTHER MEGARAIL BEAMS

**MegaRail VIK CC2-W3**  
(POST CENTRES AT 2M)  
& **MegaRail VIK CC4-W3**  
(POST CENTRES AT 4M)

SYSTEM ASSEMBLY AND SETTING  
OUT ARRANGEMENT SCHEMATIC

SYSTEM COMPONENT SCHEDULE - QUANTITIES / 4m BEAM		
SAFEROAD UK PART NUMBER	DESCRIPTION	QUANTITY
SR700	'A' PROFILE BEAM 3MM THICK	1
SEE TABLE B	SIGMA 100 POST	(1)
FOR SCHEDULE OF BOLTED CONNECTIONS REFER TO DRAWING NUMBER N2W3-GA-02		

TABLE 'B' - SCHEDULE OF POST REFERENCE NUMBERS AND LENGTHS	
SAFEROAD PART NUMBER	POST LENGTH
SR613	2400
SR609	2100
SR711	1950
SR712	1100

10	22/03/24	ADDITIONAL POST CENTRES ADDED	H.B
09	17/12/21	DETAILS REVISED	A.D
08	23/09/21	GENERAL NOTE 7 ALTERED	A.D
07	28/08/19	SYSTEM HEIGHT REVISED	M.T
06	21/06/19	BEAM LENGTH REVISED	M.T
05	12/02/19	TITLEBLOCK REVISED	H.B
04	20/04/17	VI RATING REMOVED	L.L
03	10/03/17	BEAM CHAMFERED	L.L
02	26/01/17	CODES & DETAILS REVISED	L.L
1.3	21/05/15	DETAILS REVISED	M.T
REVn	DATE	DETAILS	INITIAL



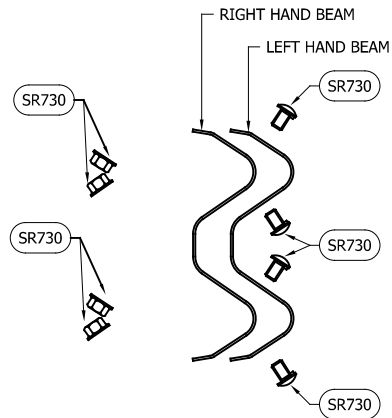
CONCORD HOUSE,  
BESSEMER WAY, SCUNTHORPE,  
NORTH LINCOLNSHIRE, DN15 8XE  
t: 01724 289119  
FOR TECHNICAL ASSISTANCE CONTACT  
john.cudlipp@saferoad.co.uk

DRAWING NUMBER:

N2W3-GA-01

REVn:

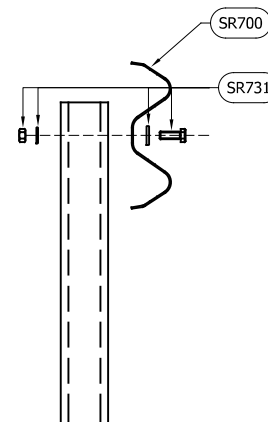
10



BEAM LAP FIXING SCHEMATIC  
(x2 LOCATIONS / BEAM END)

\*\* BEAM REFERENCES i.e. LEFT / RIGHT HAND ARE FOR VERGE INSTALLATIONS; FOR CENTRAL RESERVATION INSTALLATIONS THE REFERENCES ARE REVERSED

BOLTING COMPONENT SCHEDULE - QUANTITIES P/BEAM		
SAFEROAD PART NUMBER	DESCRIPTION	BEAM LAP CONNECTION
SR730	SETSCREW 8.8 LIP M16x25 c/w FLANGE NUT	8 (+8)



BEAM TO POST FIXING SCHEMATIC  
(CONNECTION TYPE 1)

BOLTING COMPONENT SCHEDULE - QUANTITIES P/POST		
SAFEROAD PART NUMBER	DESCRIPTION	TYPE 1 CONNECTION
SR731	BOLT 4.6 M12x40 c/w NUT, WASHER 11Ø HOLE AND WASHER PLATE 100 x 40 x 5mm	1

- GENERAL NOTES:
- NUMBERS IN THE SCHEDULES SUFFIXED (+) DENOTES THE ADDITIONAL QUANTITY OF COMPONENTS REQUIRED FOR EXTREME ENDS OF INDIVIDUAL RUNS OF BARRIER.

07	17/05/24	LAP BOLT GRADE CHANGE	H.B
06	22/03/24	DRAWING UPDATED	H.B
05	23/09/21	NUT & WASHER REMOVED AND REPLACED WITH FLANGE NUT	A.D
04	12/02/19	TITLEBLOCK REVISED	H.B
03	20/04/17	VI RATING REMOVED	L.L
02	26/01/17	CODES & DETAILS REVISED	L.L
1.2	21/05/15	DETAILS REVISED	M,T
REVn	DATE	DETAILS	INITIAL

**MegaRail VIK CC2-W3**  
(POST CENTRES AT 2M)  
**& MegaRail VIK CC4-W3**  
(POST CENTRES AT 4M)

FIXING AND INSTALLATION  
SCHEMATIC

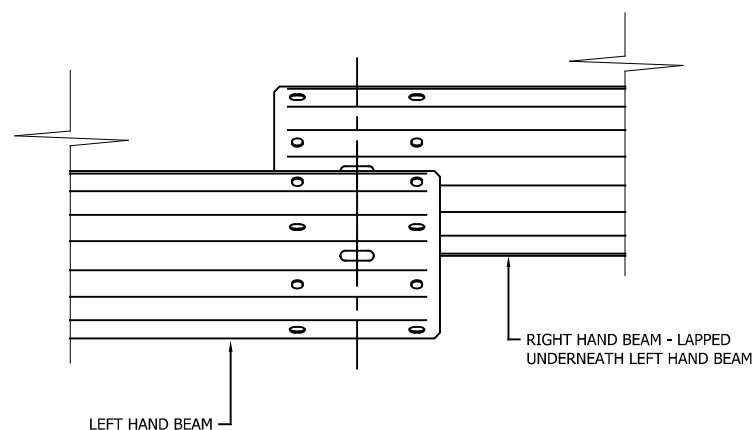
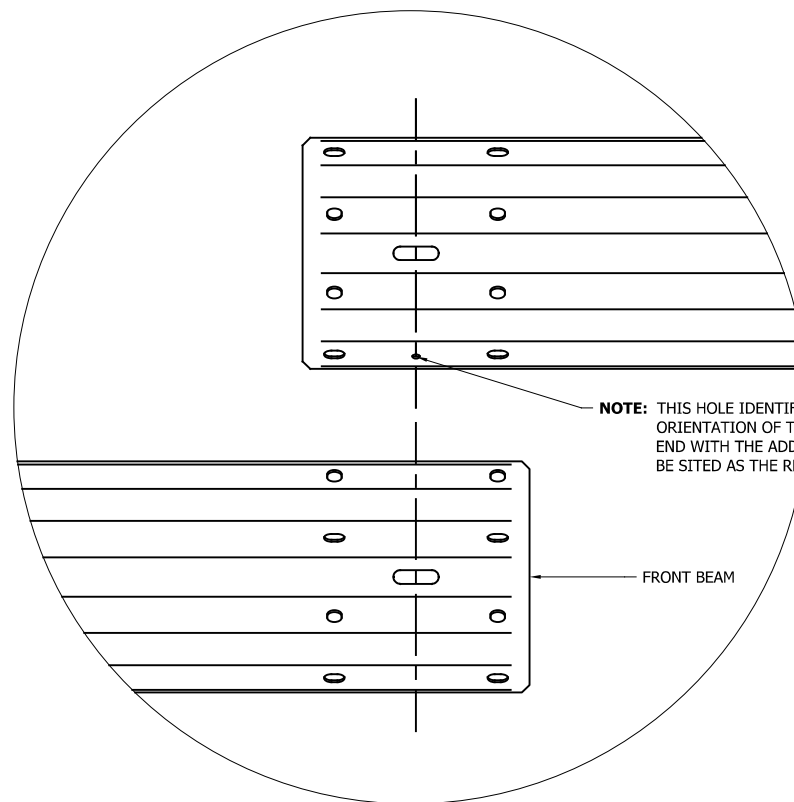
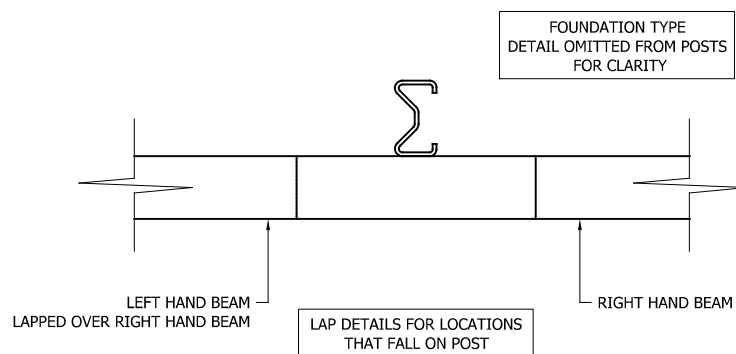
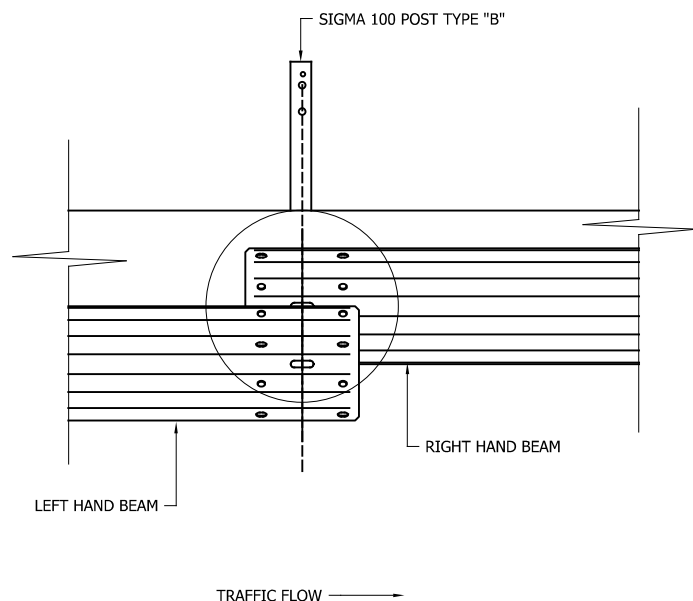


CONCORD HOUSE,  
BESSEMER WAY, SCUNTHORPE,  
NORTH LINCOLNSHIRE, DN15 8XE  
t: 01724 289119  
FOR TECHNICAL ASSISTANCE CONTACT  
john.cudlipp@saferoad.co.uk

DRAWING NUMBER:	REVn:
N2W3-GA-02	07

GENERAL NOTES:

1. POSTS ARE TO BE INSTALLED WITH THE CLOSED FACE OF THE CHANNEL TOWARDS THE ON-COMING TRAFFIC.



LAP DETAILS FOR LOCATIONS THAT DON'T FALL ON POST

08	22/03/24	DRAWING UPDATED	H.B
07	16/03/22	BEAM CORNERS CHAMFERED	A.D
06	23/09/21	HOLE REMOVED FROM LAPPING FRONT BEAM	A.D
05	12/02/19	MINOR DETAIL CHANGES AND TITLEBLOCK REVISION	H.B
04	20/04/17	VI RATING REMOVED	L.L
03	10/03/17	BEAM CHAMFERED	L.L
02	26/01/17	VIEW DETAILS REVISED	L.L
1.1	21/05/15	DETAILS REVISED	M.T
REVn	DATE	DETAILS	INITIAL

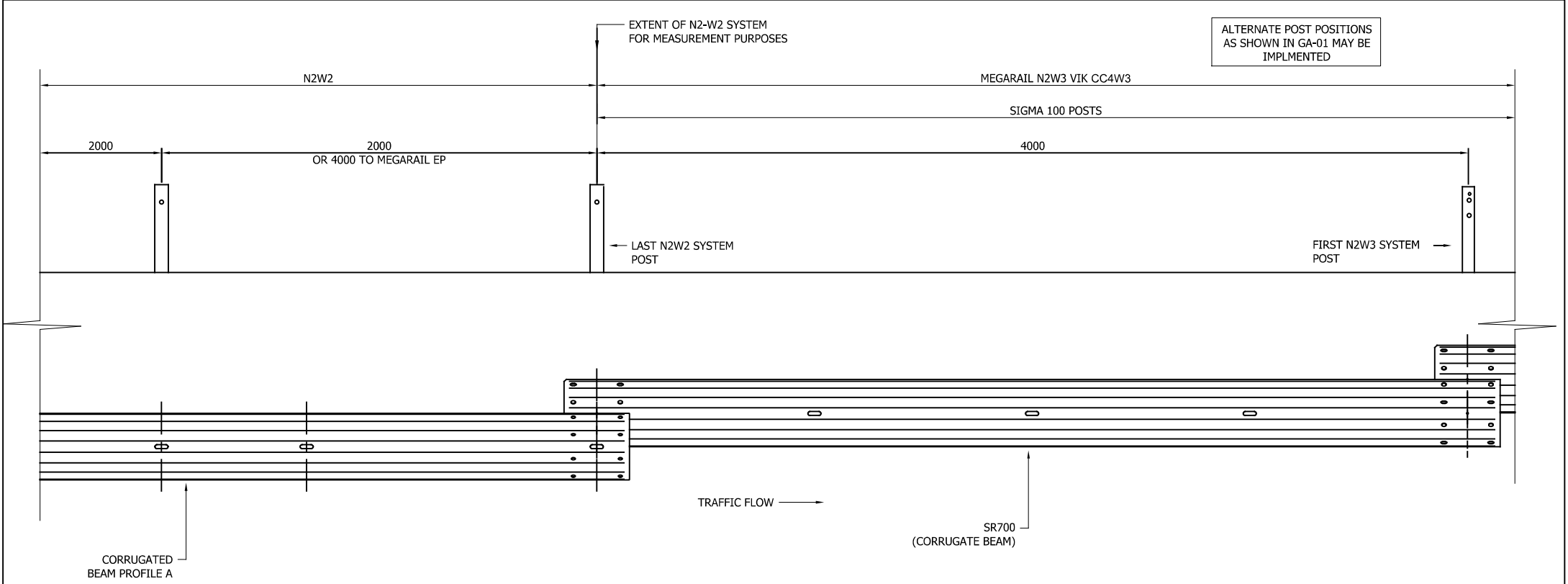
**MegaRail VIK CC2-W3**  
(POST CENTRES AT 2M)  
**& MegaRail VIK CC4-W3**  
(POST CENTRES AT 4M)

BEAM LAPPING DETAILS



CONCORD HOUSE,  
BESSEMER WAY, SCUNTHORPE,  
NORTH LINCOLNSHIRE, DN15 8XE  
t: 01724 289119  
FOR TECHNICAL ASSISTANCE CONTACT  
john.cudlipp@saferoad.co.uk

DRAWING NUMBER:	REVn:
N2W3-GA-03	08



GENERAL NOTES:  
1. POSTS ARE TO BE INSTALLED WITH THE  
CLOSED FACE OF THE CHANNEL TOWARDS THE  
ON-COMING TRAFFIC.

\*\* BEAM REFERENCES i.e. LEFT / RIGHT HAND ARE FOR VERGE INSTALLATIONS; FOR CENTRAL RESERVATION  
INSTALLATIONS THE REFERENCES ARE REVERSED

**MegaRail VIK CC2-W3**  
(POST CENTRES AT 2M)  
**& MegaRail VIK CC4-W3**  
(POST CENTRES AT 4M)

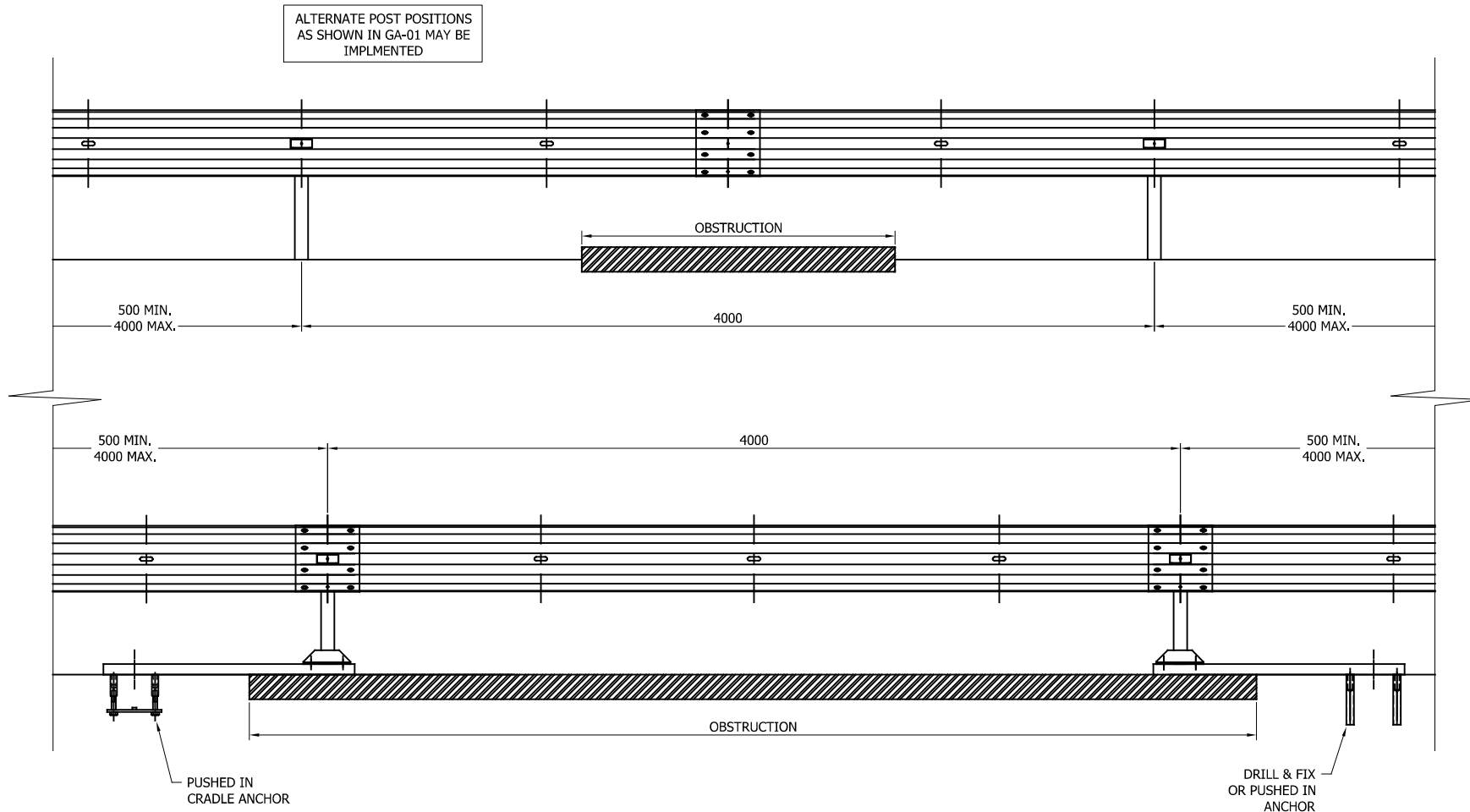
SYSTEM PROGRESSION DETAILS

08	22/03/24	DRAWING UPDATED	H.B
07	27/06/22	NOTES REMOVED	A.D
06	23/09/21	TITLEBLOCK REVISED	A.D
05	09/02/21	DETAILS REVISED	M.T
04	01/04/19	TITLEBLOCK REVISED	M.T
03	12/02/19	TITLEBLOCK REVISED	H.B
02	20/04/17	VI RATING REMOVED	L.L
01	10/03/17	POST DETAILS REVISED	L.L
00	26/01/17	NEW DRAWING	L.L
REVn	DATE	DETAILS	INITIAL



CONCORD HOUSE,  
BESSEMER WAY, SCUNTHORPE,  
NORTH LINCOLNSHIRE, DN15 8XE  
t: 01724 289119  
FOR TECHNICAL ASSISTANCE CONTACT  
john.cudlipp@saferoad.co.uk

DRAWING NUMBER:	REVn:
N2W3-GA-20	08



#### GENERAL NOTES:

1. IF THE SITE CONDITIONS DO NOT ALLOW A POST TO BE INSTALLED ON THE SYSTEM PITCH DEVIATIONS CAN BE APPLIED. THE OBSTRUCTED POST CAN BE LEFT OUT AND EXTRA POSTS INSTALLED TO SPAN THE OBSTRUCTION AS PER THIS DRAWING. ALTHOUGH IT WOULD BE BENEFICIAL TO USE THE HOLES ALREADY IN THE BEAM IT IS ACCEPTABLE TO DRILL NEW HOLES IN THE DESIRED POSITIONS AND TREAT WITH ZINC RICH PAINT.
2. OFFSET POSTS SHOWN ON DRAWING N2W3-GA-00 CAN BE USED.

08	22/03/24	DRAWING UPDATED	H.B
07	13/05/22	SURFACE MOUNTED POST BASE CHANGED	A.D
06	17/12/21	WASHER PLATE DETAIL REVISED	A.D
05	23/09/21	TITLEBLOCK REVISED	A.D
04	23/07/21	SURFACE MOUNTED POST DETAIL ADDED	A.D
03	01/04/19	DETAILS REVISED	M.T
02	12/02/19	TITLEBLOCK REVISED	H.B
01	20/04/17	VI RATING REMOVED	L.L
00	26/01/17	NEW DRAWING	L.L
REVn	DATE	DETAILS	INITIAL

#### MegaRail VIK CC2-W3 (POST CENTRES AT 2M) & MegaRail VIK CC4-W3 (POST CENTRES AT 4M)

#### DETAILS OF PERMISSIBLE DEVIATIONS FOR POST POSITIONS



CONCORD HOUSE,  
BESSEMER WAY, SCUNTHORPE,  
NORTH LINCOLNSHIRE, DN15 8XE  
t: 01724 289119  
FOR TECHNICAL ASSISTANCE CONTACT  
john.cudlipp@saferoad.co.uk

DRAWING NUMBER:	REVn:
N2W3-GA-40	08