



SN2 W1, W2 & W4 Steel Parapet Course

At a glance...

Training (with Assessments)

Duration Notes:

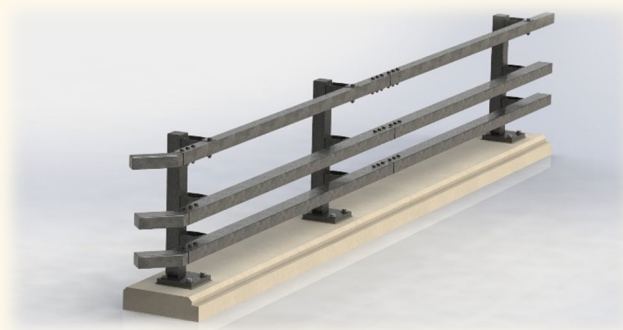
The duration of the course is one day.

Delivery Method:

Classroom based delivery with practical session.

Recognised by:

Lantra



Overview in brief

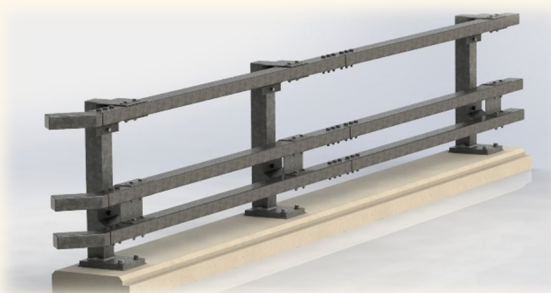
This course will develop /increase your knowledge regarding the SN2 W1, W2 & W4 Parapet systems. Should candidates achieve the required pass mark on the end of course assessment, they will be awarded a certificate of attendance from Lantra proving successful completion of the SN2 training course.

The finer details

This training course has been developed to provide knowledge to aid in the installation, maintenance, inspection, and repair of SN2 W1, W2 & W4 Parapets.

The training course will consist of a day of theory in the classroom and a familiarisation/ inspection of the installed SN2 Steel Parapets in our approved training school. Course theory sections include:

- Product Design, Warranty, and liability
- Containment levels
- System Drawings
- Theory Assessment.



Who should attend?

This course is for people who are looking to undertake installation, inspection, maintenance, or repair of the SN2 W1, W2 & W4 parapet system.

