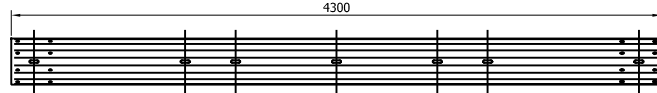
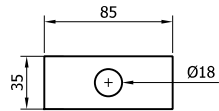


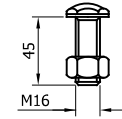
SR542 - PROFILE 'A' BEAM
5300mm x 2.5mm



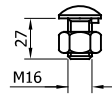
SR000 - "A" PROFILE BEAM 4.3m x 2.5mm THK



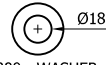
SR155 - WASHER PLATE
85 x 35 x 4 DIA. 18



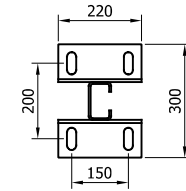
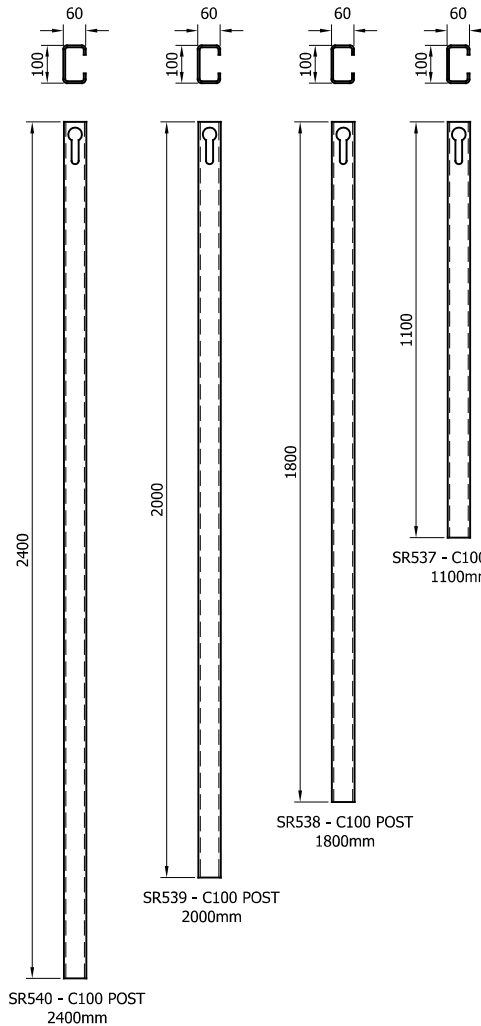
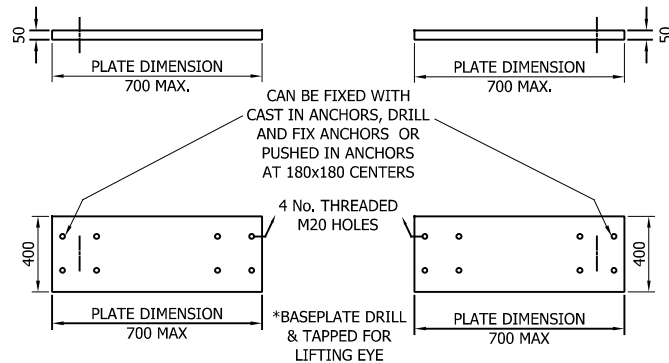
SR201 - PANHEAD 8.8
M16x45 C/W NUT



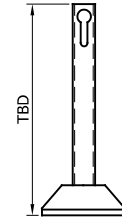
SR200 - SETSCREW 4.6 LIP
M16x27 c/w NUT



SR300 - WASHER
M16



SR541 - SURFACE
MOUNTED C100 POST



SR100 - A21
REINFORCING
RING

REVn	DATE	DETAILS	INITIAL
02	27/09/24	SR000 DETAILS ADDED	H.B
01	28/06/24	PRODUCT CODES UPDATED	H.B
00	06/06/23	DRAWING CREATED	H.B

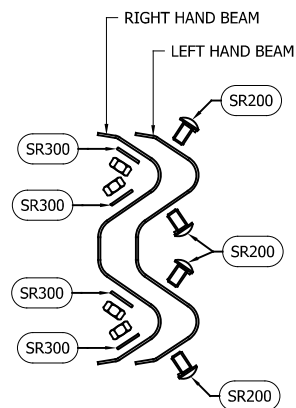
MEGARAIL EP 5.0 N2 W3

COMPONENTS SCHEMATIC



CONCORD HOUSE,
BESSEMER WAY, SCUNTHORPE,
NORTH LINCOLNSHIRE, DN15 8XE
t: 01724 289119
FOR TECHNICAL ASSISTANCE CONTACT
john.cudlipp@saferoad.co.uk

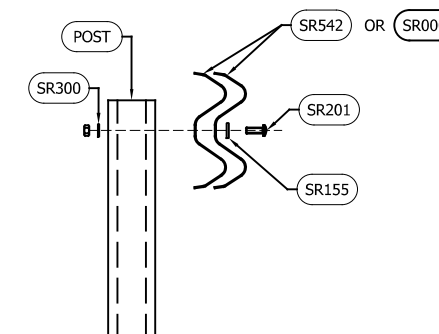
DRAWING NUMBER:	REVn:
MR-ep5.0-GA-00	02



BEAM LAP CONNECTION
FIXING SCHEMATIC
(QTY P/1No. BEAM)

** BEAM REFERENCES i.e. LEFT / RIGHT HAND ARE FOR VERGE INSTALLATIONS; FOR CENTRAL RESERVATION INSTALLATIONS THE REFERENCES ARE REVERSED

BEAM LAP CONNECTION		
SAFEROAD UK PART NUMBER	DESCRIPTION	QTY'S P/BEAM
SR200	SETSCREW 4.6 LIP M16x27 c/w NUT	8 (+8)
SR300	WASHER M16 18ø HOLE	8 (+8)



BEAM TO POST
CONNECTION
(QTY'S P/POST)

BEAM TO POST CONNECTION		
SAFEROAD UK PART NUMBER	DESCRIPTION	QTY'S P/POST
SR201	PANHEAD 8.8 M16 x 45 C/W NUT	1
SR155	WASHER PLATE 85 x 35 x 4 DIA. 18	1
SR300	WASHER M16 18ø HOLE	1

- GENERAL NOTES:
- NUMBERS IN THE SCHEDULES SUFFIXED (+) DENOTES THE ADDITIONAL QUANTITY OF COMPONENTS REQUIRED FOR EXTREME ENDS OF INDIVIDUAL RUNS OF BARRIER.

02	27/09/24	SR000 DETAILS ADDED	H.B
01	28/06/24	PRODUCT CODES UPDATED	H.B
00	06/06/23	DRAWING CREATED	H.B
REVn	DATE	DETAILS	INITIAL

MEGARAIL EP 5.0 N2 W3

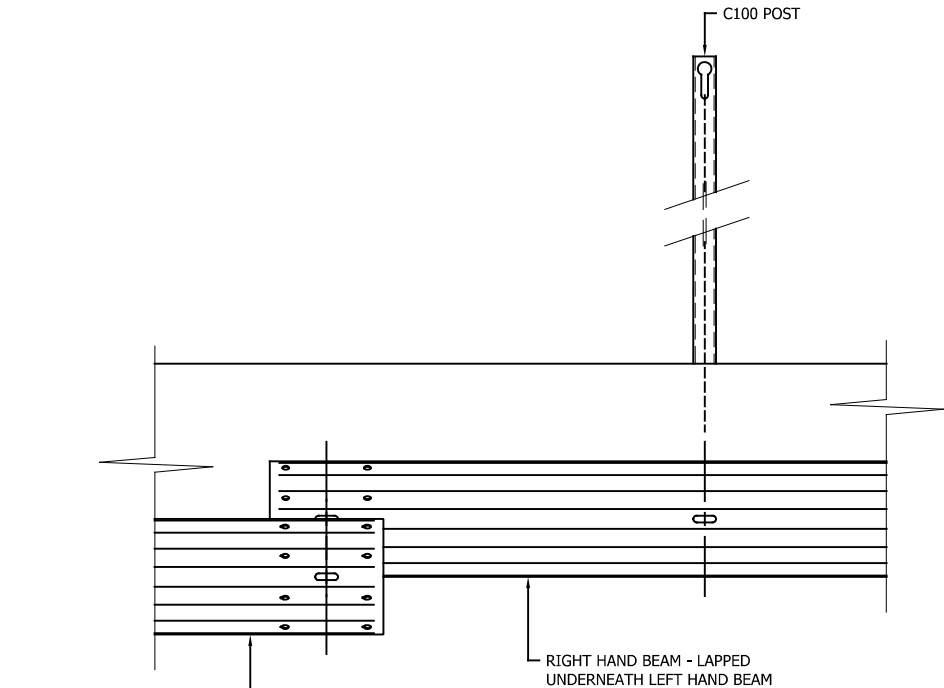
SYSTEM BOLTING ARRANGEMENT



CONCORD HOUSE,
BESSEMER WAY, SCUNTHORPE,
NORTH LINCOLNSHIRE, DN15 8XE
t: 01724 289119
FOR TECHNICAL ASSISTANCE CONTACT
john.cudlipp@saferoad.co.uk

DRAWING NUMBER:	REVn:
MR-ep5.0-GA-02	02

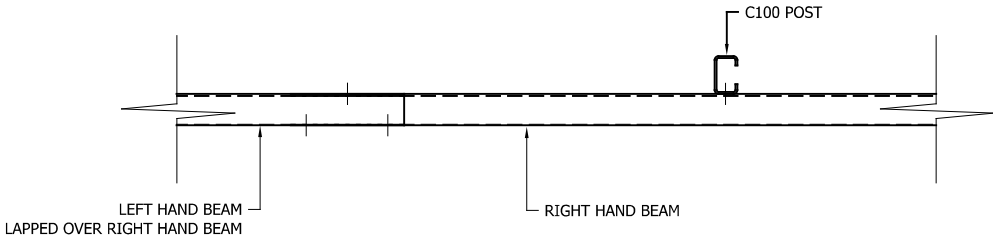
- GENERAL NOTES:
1. POSTS ARE TO BE INSTALLED WITH THE CLOSED FACE OF THE CHANNEL TOWARDS THE ON-COMING TRAFFIC.



LEFT HAND BEAM
(‘TEAR DROP’ HOLES TO BE AT
DEPARTURE END OF BEAM)

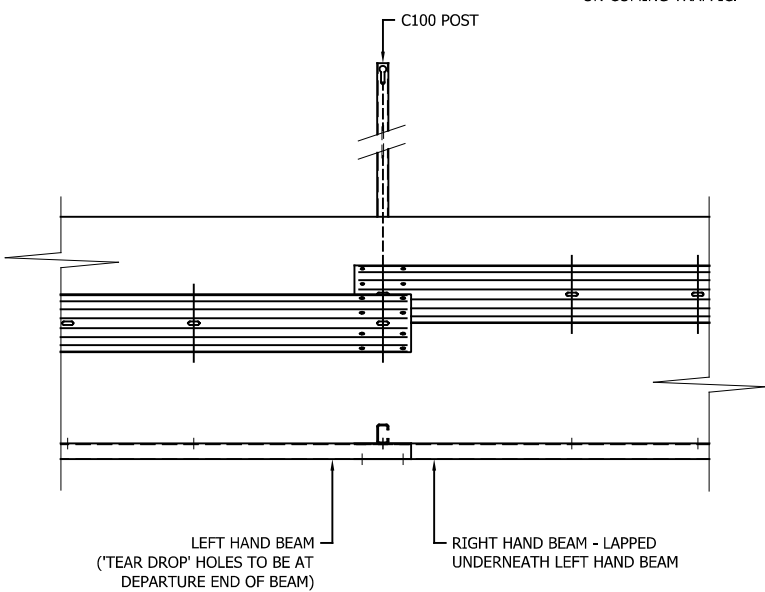
LAP DETAILS FOR LOCATIONS
THAT DON'T FALL ON POST
(OCCURS WHEN USING BOTH SR542 & SR000 BEAMS)

FOUNDATION TYPE
DETAIL OMITTED FROM POSTS
FOR CLARITY



LAP DETAILS FOR LOCATIONS
THAT DON'T FALL ON POST
(OCCURS WHEN USING BOTH SR542 & SR000 BEAMS)

** BEAM REFERENCES i.e. LEFT / RIGHT HAND ARE FOR VERGE
INSTALLATIONS; FOR CENTRAL RESERVATION INSTALLATIONS THE
REFERENCES ARE REVERSED



LAP DETAILS FOR LOCATIONS
THAT FALL ON POST
(ONLY OCCURS WHEN USING SR000)

REVn	DATE	DETAILS	INITIAL
01	27/09/24	SR000 DETAILS ADDED	H.B
00	06/06/23	DRAWING CREATED	H.B

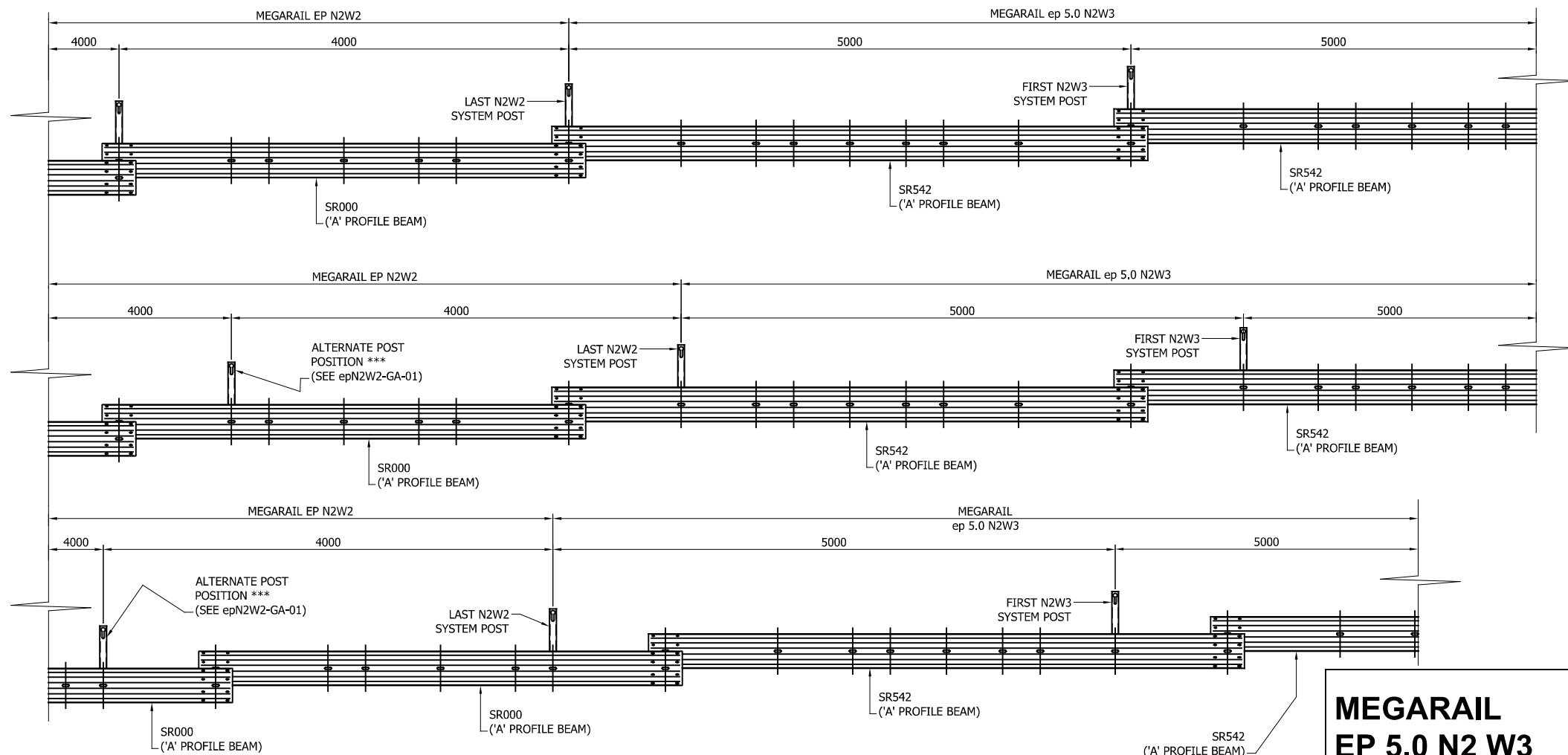
MEGARAIL EP 5.0 N2 W3

BEAM LAPPING DETAILS

 **SAFEROAD**

CONCORD HOUSE,
BESSEMER WAY, SCUNTHORPE,
NORTH LINCOLNSHIRE, DN15 8XE
t: 01724 289119
FOR TECHNICAL ASSISTANCE CONTACT
john.cudlipp@saferoad.co.uk

DRAWING NUMBER:	REVn:
MR-ep5.0-GA-03	01



MEGARAIL EP 5.0 N2 W3

SYSTEM PROGRESSION DETAILS
FOR MEGARAIL EP 5.0 SYSTEM USING
5M BEAM (SR542)



CONCORD HOUSE,
BESSEMER WAY, SCUNTHORPE,
NORTH LINCOLNSHIRE, DN15 8XE
t: 01724 289119
FOR TECHNICAL ASSISTANCE CONTACT
john.cudlipp@saferoad.co.uk

DRAWING NUMBER:

REVn:

MR-ep5.0-GA-20

03

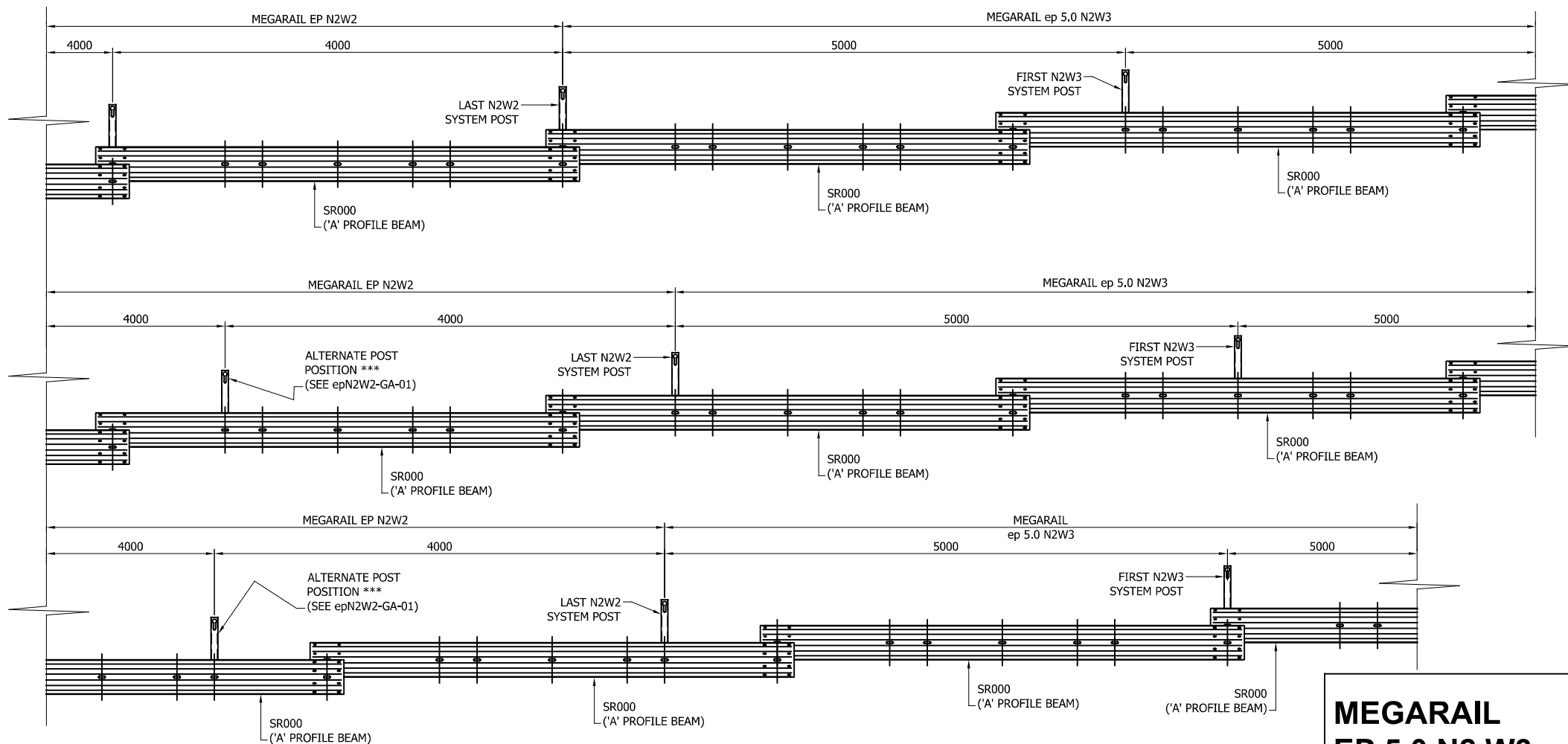
GENERAL NOTES:

1. POSTS ARE TO BE INSTALLED WITH THE CLOSED FACE OF THE CHANNEL TOWARDS THE ON-COMING TRAFFIC.
2. SR000 BEAM MAY ALSO BE USED AS AN ALTERNATIVE OPTION (SEE MR-ep5.0-GA-21 FOR DETAILS)

** BEAM REFERENCES i.e. LEFT / RIGHT HAND ARE FOR VERGE INSTALLATIONS; FOR CENTRAL RESERVATION INSTALLATIONS THE REFERENCES ARE REVERSED

SEE MR-ep5.0-GA-03 FOR
BEAM LAP CONNECTION DETAILS

REVn	DATE	DETAILS	INITIAL
03	18/11/24	DRAWING UPDATED	H.B
02	27/09/24	SR000 DETAILS ADDED	H.B
01	28/06/24	PRODUCT CODES UPDATED	H.B
00	06/06/23	DRAWING CREATED	H.B



MEGARAIL EP 5.0 N2 W3

SYSTEM PROGRESSION DETAILS
FOR MEGARAIL EP 5.0 SYSTEM USING
4M BEAM (SR000)



CONCORD HOUSE,
BESSEMER WAY, SCUNTHORPE,
NORTH LINCOLNSHIRE, DN15 8XE
t: 01724 289119
FOR TECHNICAL ASSISTANCE CONTACT
john.cudlipp@saferoad.co.uk

DRAWING NUMBER:

REVn:

MR-ep5.0-GA-21

00

GENERAL NOTES:

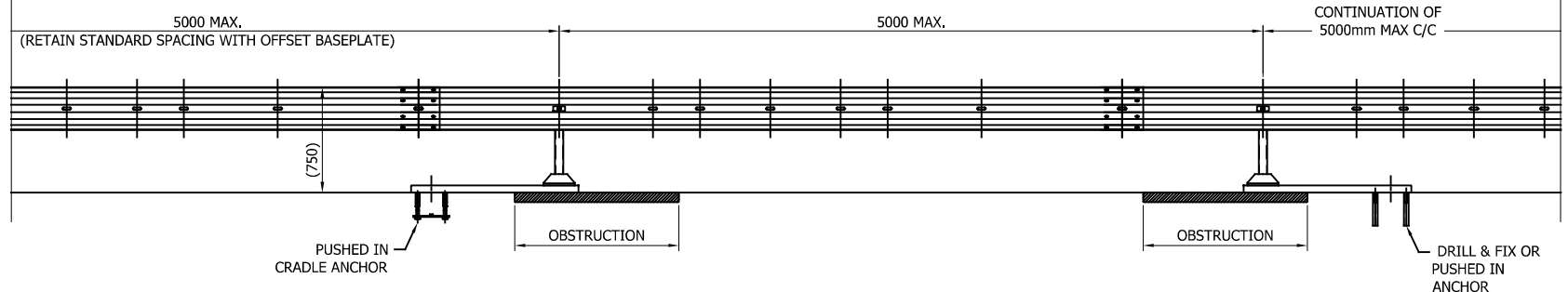
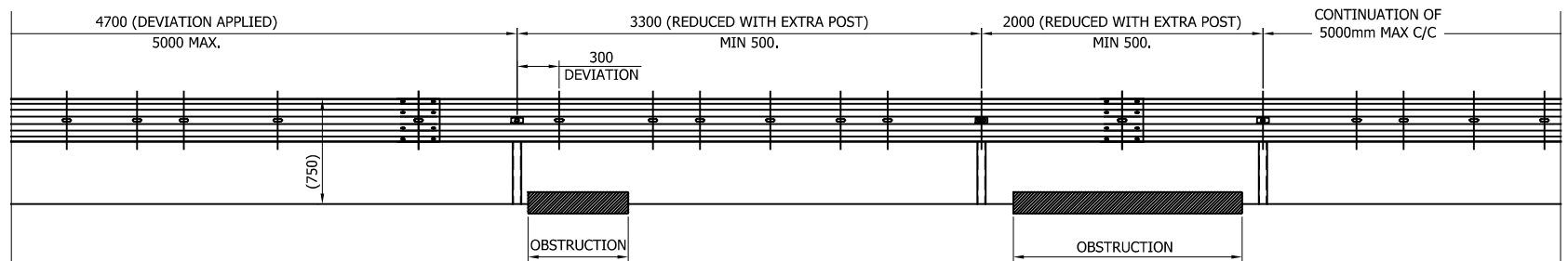
1. POSTS ARE TO BE INSTALLED WITH THE CLOSED FACE OF THE CHANNEL TOWARDS THE ON-COMING TRAFFIC.

** BEAM REFERENCES i.e. LEFT / RIGHT HAND ARE FOR VERGE INSTALLATIONS; FOR CENTRAL RESERVATION INSTALLATIONS THE REFERENCES ARE REVERSED

SEE MR-ep5.0-GA-03 FOR
BEAM LAP CONNECTION DETAILS

00	18/11/24	DRAWING CREATED	H.B
REVn	DATE	DETAILS	INITIAL

SR000 MAY ALSO BE USED



GENERAL NOTES:

1. DISTANCE BETWEEN POSTS CANNOT EXCEED TESTED PARAMETRES. IF THE SITE CONDITIONS DO NOT ALLOW A REGULAR DISTANCE, THE POST SPACING CAN BE SHIFTED BY 300mm.
2. IF IT IS NOT POSSIBLE TO INSTALL A POST IN THE INTENDED LOCATION & USING THE TOLERANCE OF 300mm, THE POST SPACING MUST BE REDUCED WITH AN ADDITIONAL POST. THE MINIMUM DISTANCE BETWEEN THE POSTS IS STRICTLY 500mm.
3. OFFSET POSTS SHOWN ON DRAWING MR-ep5.0-GA-00 CAN BE USED (USE WITH SR541)
4. IN PRINCIPLE, THE FABRICATED SLOTS IN THE BEAM SHOULD BE USED, HOWEVER WHERE DEVIATIONS ARE REQUIRED IT IS ACCEPTABLE TO DRILL NEW HOLES IN THE DESIRED LOCATIONS. NEW HOLES TO BE TREATED WITH ZINC RICH PAINT.
5. SR000 BEAM MAY ALSO BE USED AS AN ALTERNATIVE OPTION.

REVn	DATE	DETAILS	INITIAL
02	27/09/24	SR000 DETAILS ADDED	H.B
01	28/06/24	PRODUCT CODES UPDATED	H.B
00	06/06/23	DRAWING CREATED	H.B

MEGARAIL EP 5.0 N2 W3

SYSTEM DEVIATION OPTIONS



CONCORD HOUSE,
BESSEMER WAY, SCUNTHORPE,
NORTH LINCOLNSHIRE, DN15 8XE
t: 01724 289119
FOR TECHNICAL ASSISTANCE CONTACT
john.cudlipp@saferoad.co.uk

DRAWING NUMBER:	REVn:
MR-ep5.0-GA-40	02